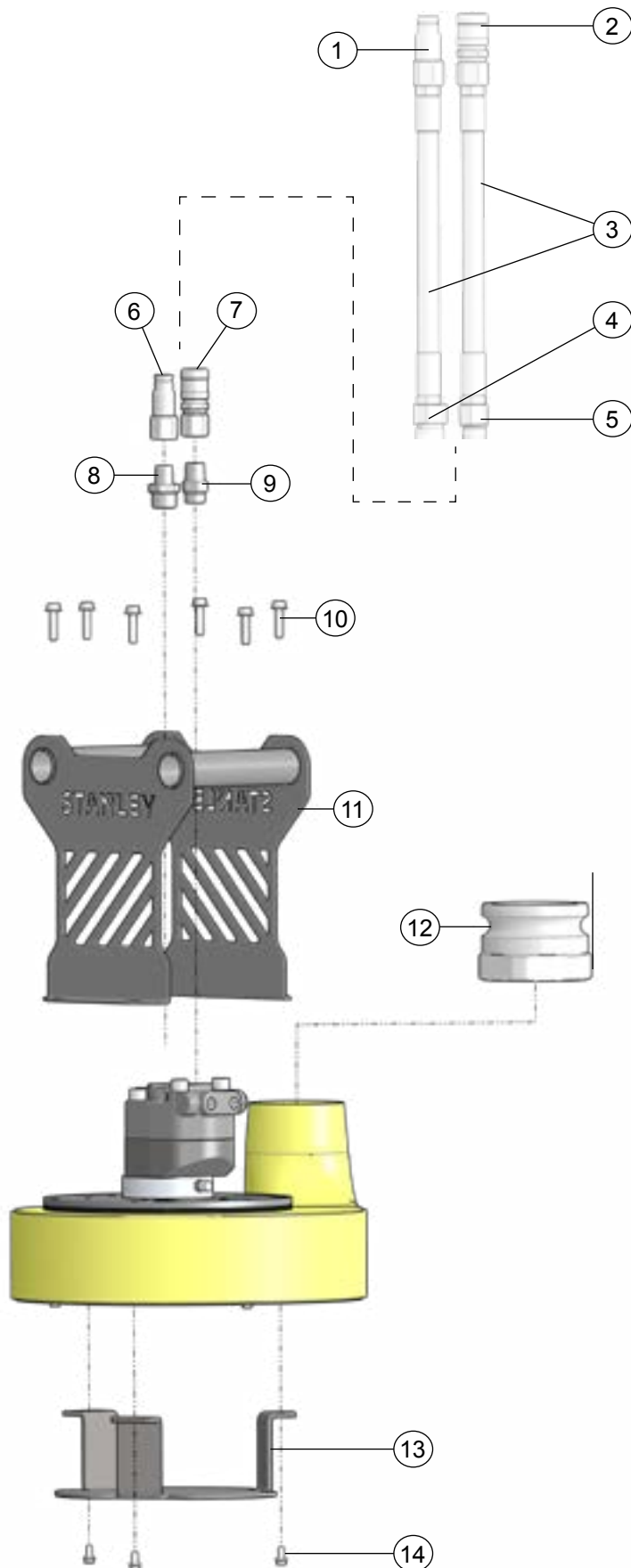
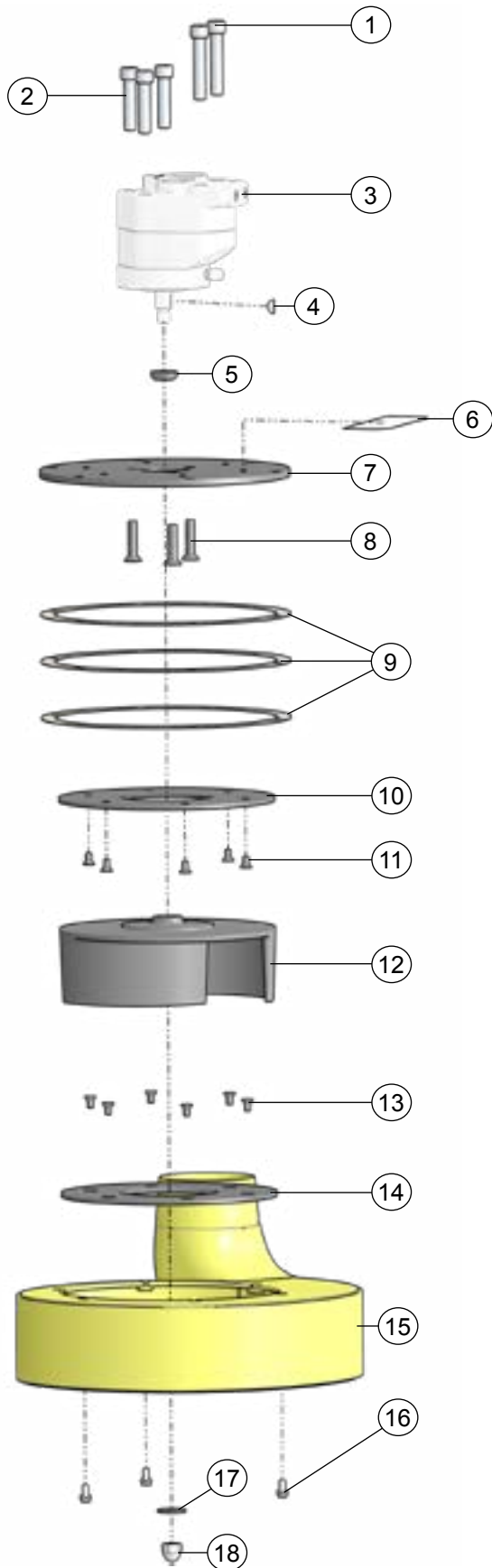


# TP08 BODY ILLUSTRATION



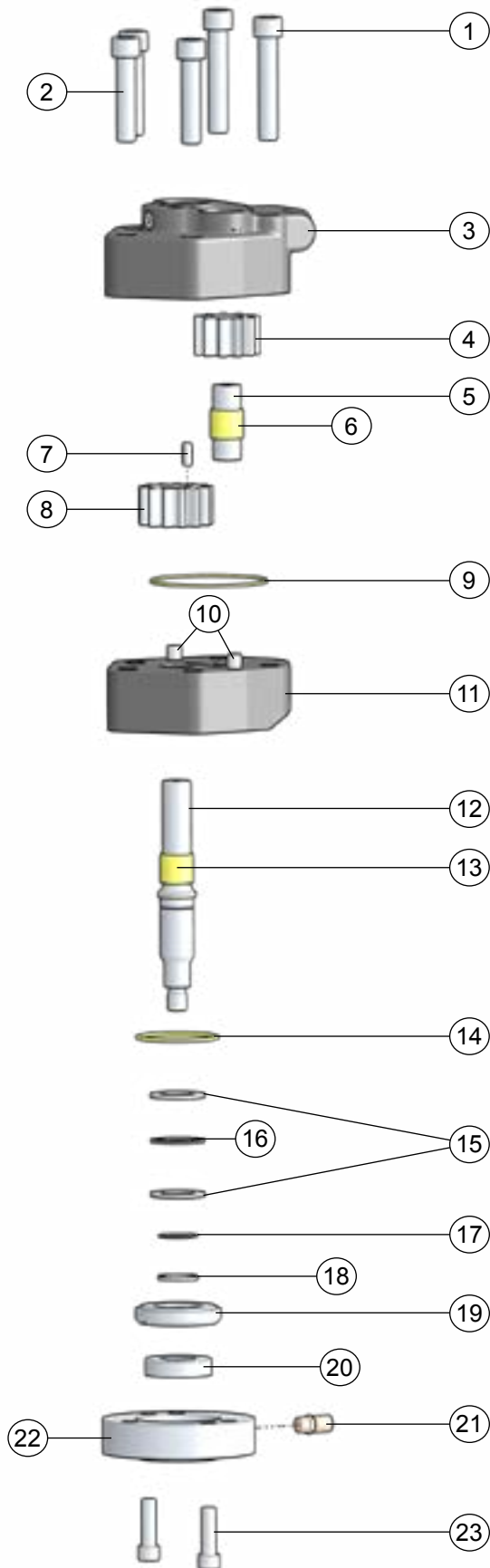
ITEM	P/N	QTY	DESCRIPTION
1	09579	1	Coupler (Model TP08013W)
2	09578	1	Coupler (Model TP08013W)
3	01652	2	Hose (Model TP08013W)
4	82533	1	Fitting (Model TP08013W)
5	82532	1	Fitting (Model TP08013W)
6	03976	1	Male Coupler
7	03975	1	Female Coupler
8	06264	1	Adapter
9	07882	1	Adapter
10	81261	6	Cap Screw
11	81212	1	Handle
12	21967	1	Camlock Coupler
13	81210	1	Volute Foot
14	59074	1	Cap Screw

# TP08 IMPELLER ILLUSTRATION



ITEM	P/N	QTY	DESCRIPTION
1	21987	2	Cap Screw
2	21986	3	Cap Screw
3	31505	1	Motor Assembly (See page 17)
4	00600	1	Woodruff Key
5	06311	1	V-Ring
6	81215	1	TP08 Sticker
	82525	1	TP08 Sticker (Model TP08013L11)
7	81132	1	Motor Adapter Plate
8	21978	3	Cap Screw
9	81133	3	Spacers
10	81260	1	Wear Plate
11	21989	6	Cap Screw
12	21979	1	Impeller
13	21989	6	Cap Screw
14	81260	1	Wear Plate
15	82522	1	Volute (Yellow)
	82523	1	Volute (Black -Model TP08013B)
16	59074	3	Cap Screw
17	03827	1	Washer
18	21988	1	Acorn Nut

# TP08 MOTOR ILLUSTRATION



ITEM	P/N	QTY	DESCRIPTION
1	21987	2	Cap Screw
2	21986	3	Cap Screw
3	82595	1	Motor Cap Assembly
4	21982	1	Idler Gear
5	21984	1	Idler Shaft
6	19793	1	Bushing
7	82602	1	Key
8	21974	1	Drive Gear
9	15385	1	O-ring
10	22065	2	Dowel Pin
11	20672	1	Bearing Carrier
12	21971	1	Motor Shaft
13	19793	1	Bushing
14	01872	1	O-ring
15	20680	1	Bearing Washer
16	08020	1	Thrust Bearing
17	26812	1	Retaining Ring
18	73064	1	Quad Ring
19	73059	1	Seal Carrier
20	21981	1	Seal Anvil
21	01220	1	Grease Fitting
22	21976	1	Housing
23	10793	2	Cap Screw