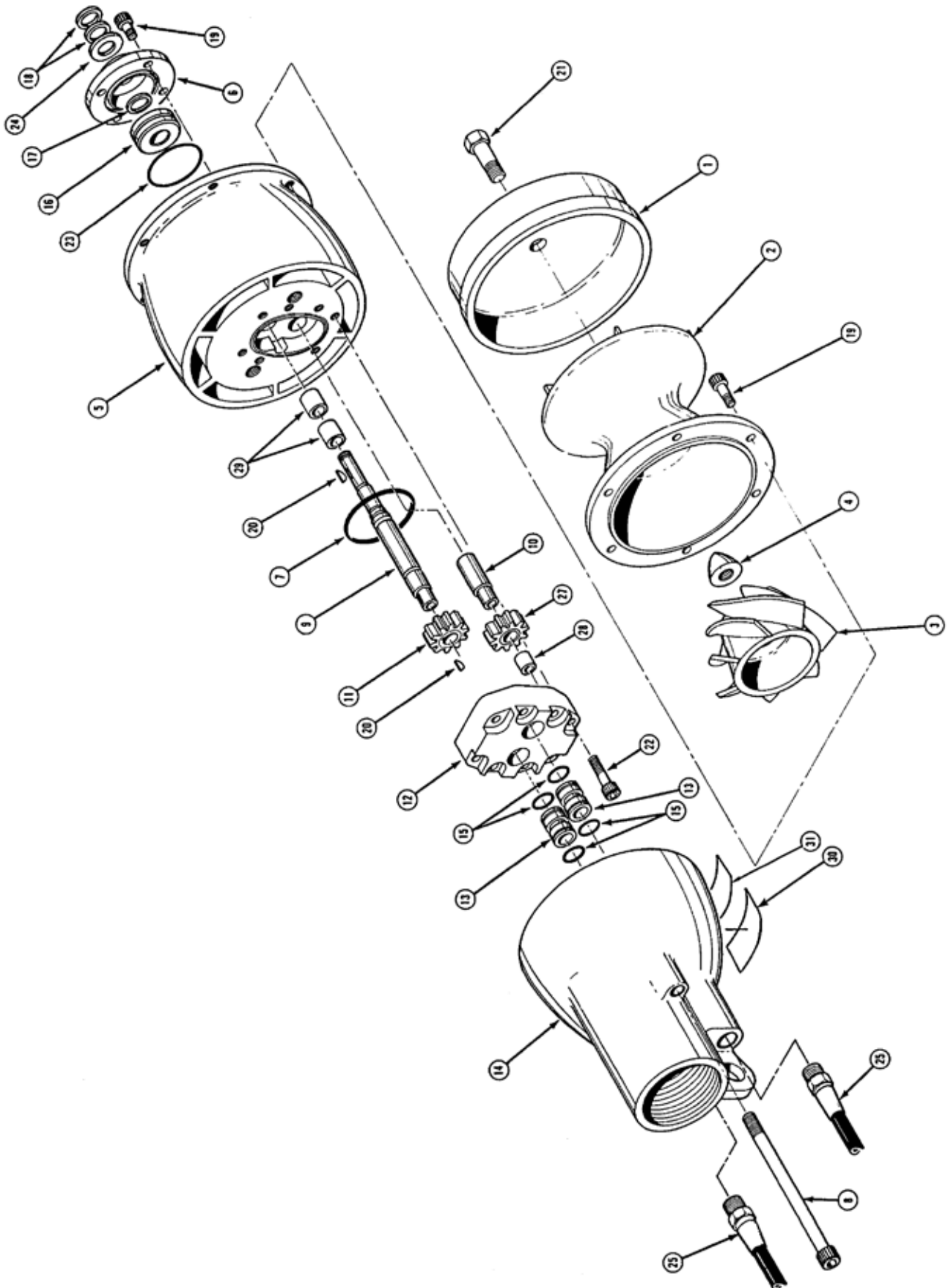


SM21 PARTS ILLUSTRATION



SM21 PARTS LIST

ITEM NO.	PART NO.	QTY	DESCRIPTION
1	02430	1	PUMP SCREEN
2	02431	1	INLET BELL
3	02432	1	IMPELLER
4	02433	1	CONICAL NUT
5	06921	1	MAIN BODY HOUSING (INCLUDES ITEMS 10 & 29)
6	02435	1	SEAL BODY
7	00178	1	O-RING
8	02555	2	CAPSCREW
9	06922	1	PUMP SHAFT
10	06917	1	IDLER SHAFT
11	02440	1	GEAR
12	02441	1	MOTOR END PLATE
13	02442	2	OIL TUBE
14	02443	1	OUTLET CONE
15	00016	4	O-RING
16	02444	1	THRUST BEARING
17	02445	1	QUAD RING
18	01204	1	WASHER (* NOTE QUANTITY WHEN DISASSEMBLING TOOL)
19	02446	10	CAPSCREW
20	02447	2	KEY, WOODRUFF #403
21	02448	1	CAPSCREW
22	02449	8	CAPSCREW
23	00020	1	O-RING
24	29853	1	WASHER
25	01412	2	PIGTAIL HOSE ASSEMBLY
TG1	11207	1	CIRCUIT TYPE D STICKER •
27	06919	1	IDLER GEAR ASSY (INCL ITEM 28)
28	05207	1	BUSHING
29	06916	2	BUSHING
TG2	28322	1	CE STICKER (CE ONLY) •
30	28786	1	COUPLER STICKER •
31	88348	1	MANUAL STICKER •
TG3	74763	1	NAME TAG SM21 (CE ONLY) •
KT1	03971	1	FF COUPLER SET 3/8 BODY 3/8 NPT
SK1	03081	1	SEAL KIT (INCLUDES ITEMS 7, 15, 17 & 23)

• Not shown in parts illustration.