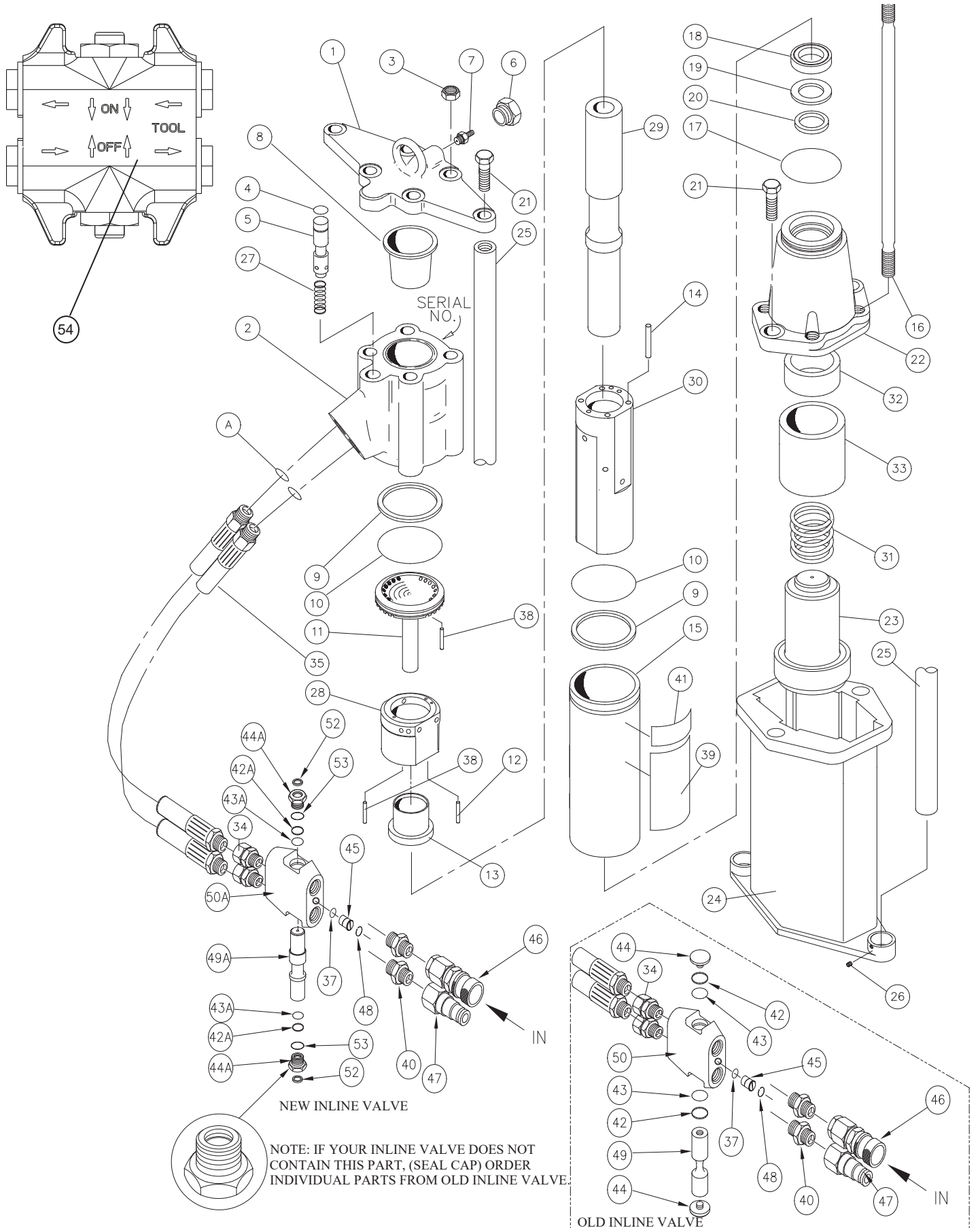


PD45131 PARTS ILLUSTRATION



PD45131 PARTS LIST

ITEM	PART NO.	QTY	DESCRIPTION
1	15190	1	TOP PLATE
2	11588	1	ACCUMULATOR VALVE BLOCK
3	04374	4	LOCK NUT 5/8-18
4	00293	1	O-RING
5	15188	1	VALVE SPOOL
6	07493	1	MALE O-RING PLUG
7	20499	1	CHARGE VALVE
8	07479	1	ACCUMULATOR DIAPHRAGM
9	04381	2	BACK-UP RING
10	04379	2	O-RING
11	04378	1	PORTING BLOCK
12	04571	2	PUSH PIN
13	04382	1	AUTOMATIC VALVE
14	04605	4	PUSH PIN
15	04383	1	FLOW SLEEVE TUBE
16	12139	4	SIDE ROD
17	02022	1	O-RING
18	04386	1	CUP SEAL
19	04780	1	WASHER
20	04387	1	ROD WIPER
21	370351	4	CAPSCREW
22	72592	1	ADAPTER BLOCK (IF ORDERING ADAPTER BLOCK YOU MUST ORDER P/N 72592 ADAPTER BLOCK ASSY WHICH INCLUDES ITEMS 32 & 33)
23	15189	1	ANVIL
24	15170	1	POST DRIVER FOOT
25	15182	2	HANDLE BAR
26	15194	2	SET SCREW, 3/8-16 x 1/2 HSH
27	04058	1	SPRING
28	07480	1	AUTOMATIC VALVE BODY
29	07481	1	PISTON
30	07485	1	FLOW SLEEVE
31	12146	1	SPRING
32	72592	1	UPPER ANVIL STOP (IF ORDERING UPPER ANVIL STOP YOU MUST ORDER P/N 72592 ADAPTER BLOCK ASSY WHICH INCLUDES ITEMS 22 & 33)
33	72592	1	ANVIL BUSHING (IF ORDERING ANVIL BUSHING YOU MUST ORDER P/N 72592 ADAPTER BLOCK ASSY WHICH INCLUDES ITEMS 22 & 32)
34	00856	2	1/2 INCH SAE TO 1/2 INCH TUBE
35	66722	2	HOSE ASSY (PD45131 & PD4513103)
	35784	2	HOSE ASSY (PD45131J)
36	—	—	NO ITEM
37	00026	1	O-RING

ITEM	PART NO.	QTY	DESCRIPTION
38	02900	2	ROLL PIN
39	74808	1	PD45 NAME TAG
40	00936	2	ADAPTER
41	19693	1	DANGER STICKER
42	13568	2	BACK UP RING (OLD IN-LINE VALVE)
42A	07224	2	BACK UP RING (NEW IN-LINE VALVE)
43	13567	2	O-RING (OLD IN-LINE VALVE)
43A	07626	2	O-RING (NEW IN-LINE VALVE)
44	01003	2	ON-OFF VALVE BUTTON (OLD IN-LINE VALVE)
44A	56749	2	SEAL CAP (NEW IN-LINE VALVE)
45	10536	1	SELECTOR SCREW
46	03972	1	FEMALE COUPLER 3/8 NPT
47	03973	1	MALE COUPLER 3/8 NPT
48	16070	1	RETAINING RING
49	38631	1	VALVE SPOOL (OLD IN-LINE VALVE)
49A	67008	1	VALVE SPOOL (NEW IN-LINE VALVE)
50	38629	1	VALVE BODY ASSY (OLD IN-LINE VALVE)
50A	67007	1	VALVE BODY ASSY (NEW IN-LINE VALVE)
51	11499	2	ADAPTOR 1/2 INCH SAE-3/8 NPTF
52	56747	2	SEAL WIPER
53	01604	2	O-RING
54	72264	1	IN-LINE VALVE ASSY
	04595		SEAL KIT

For Post Adaptors (See Page 18).

Read Before Ordering In-line Valve Parts:

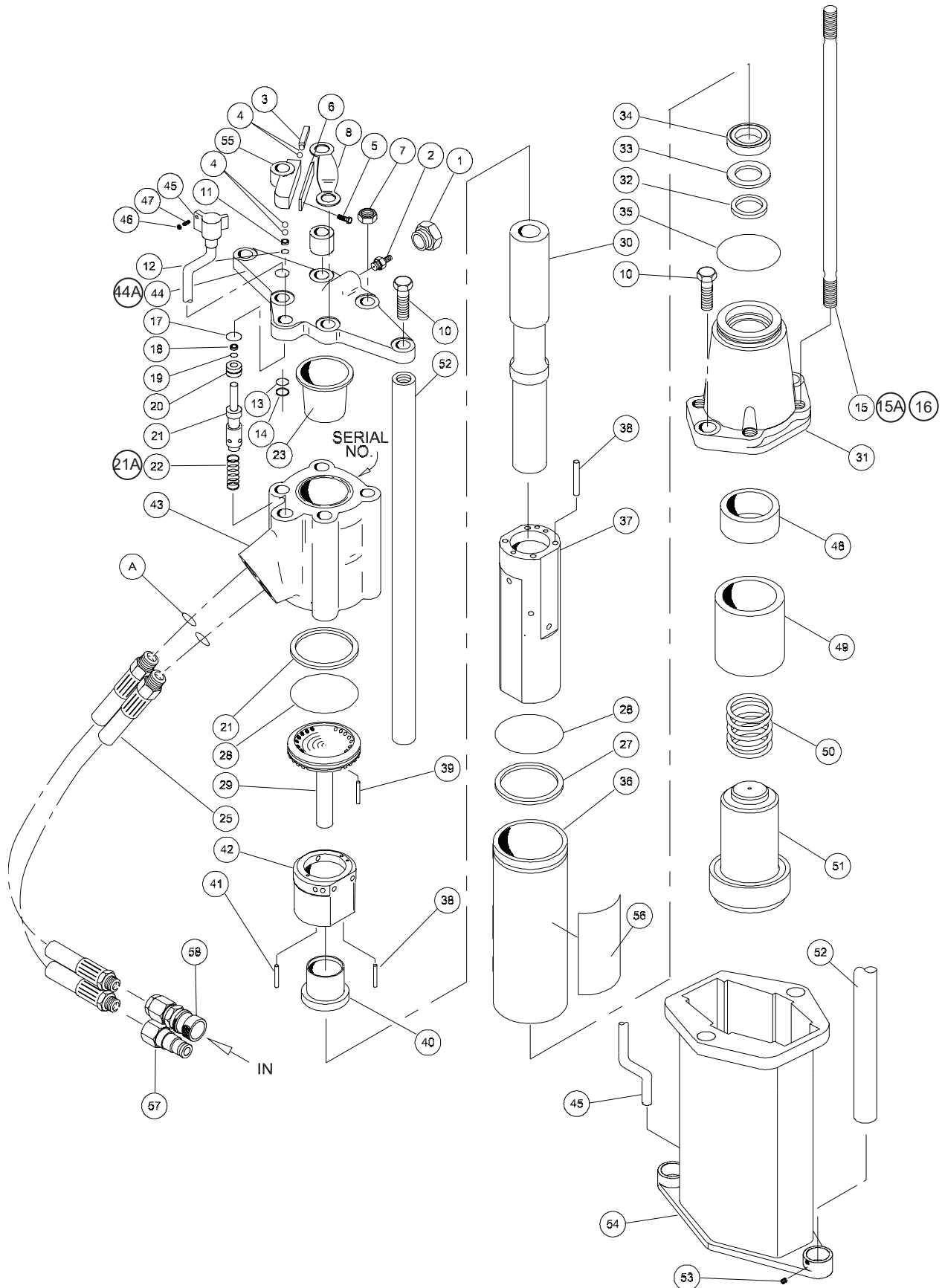
In-line Valve Assembly (OC-CC) - 72264

Includes Items (37, 42 through 45, thru 50, 52, and 53)

The in-line valve changed around June 2011. To determine if you have the old or new in-line valve, see parts illustration.

Note: Individual parts are still available for the older in-line valve but if replacing the entire in-line valve assy, you must order the new in-line valve assy P/N-72264.

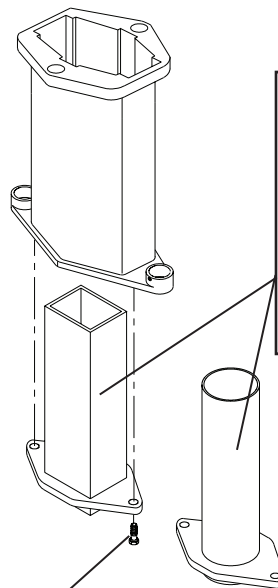
PD45132 / PD45151 PARTS ILLUSTRATION



PD45132 / PD45151 PARTS LIST

ITEM	PART NO.	QTY	DESCRIPTION
1	07493	1	O-RING PLUG-MALE
2	20499	1	CHARGE VALVE
3	20387	1	PLUNGER
4	12100	4	STEEL BALL 3/8 DIA.
5	00899	2	HHCS 1/4-20 UNC x 1/2 GR5
6	20386	1	COVER PLATE
7	04374	4	LOCK NUT 5/8-18
8	20390	1	LIFT STRAP
9	20384	1	SPACER
10	370351	4	HHCS 5/8-11 UNC x 1-3/4
11	20385	1	PILOT RING
12	02003	1	O-RING
13	20398	1	SUPPORT WASHER 3/4
14	08016	1	RETAINING RING 3/4 EXT
15	12139	2	SIDE ROD (PD45132 TAKES 2 OF ITEM 15 & 2 OF ITEM 16)
15A	12139	4	SIDE ROD (PD45151 ONLY)
16	08087	2	SIDE ROD (PD45132 ONLY)
17	00293	1	O-RING
18	04056	1	ROD WIPER 5/16 x 9/16
19	01362	1	O-RING
20	04057	1	BUSHING
21	04077	1	VALVE SPOOL OC
21A	15188	1	VALVE SPOOL (PD45151 ONLY)
22	04058	1	SPRING
23	07479	1	ACCUMULATOR DIAPHRAGM
24	—	—	NO ITEM
25	01652	2	HOSE ASSY
26	—	—	NO ITEM
27	04381	2	BACK-UP RING
28	04379	2	O-RING
29	04378	1	PORTING BLOCK
30	07481	1	PISTON
31	72592	1	ADAPTER BLOCK (IF ORDERING ADAPTER BLOCK YOU MUST ORDER P/N 72592 ADAPTER BLOCK ASSY WHICH INCLUDES ITEMS 48 & 49)
32	04387	1	ROD WIPER
33	04780	1	BACK-UP WASHER
34	04386	1	CUP SEAL
35	02022	1	O-RING
36	04383	1	FLOW SLEEVE TUBE
37	07485	1	FLOW SLEEVE
38	04605	4	PUSH PIN
39	02900	2	ROLL PIN
40	04382	1	AUTOMATIC VALVE

ITEM	PART NO.	QTY	DESCRIPTION
41	04571	2	PUSH PIN
42	07480	1	AUTOMATIC VALVE BODY
43	11588	1	ACCUMULATOR VALVE BLOCK
44	20396	1	VALVE TOP PLATE
44A	15190	1	TOP PLATE (PD45151 ONLY)
45	20392	1	TRIGGER ASSY
46	00038	1	NUT 1/4-20 PLAIN
47	20399	1	OVAL PT SET SCREW 1/4
48	72592	1	UPPER ANVIL STOP (IF ORDERING UPPER ANVIL STOP YOU MUST ORDER P/N 72592 ADAPTER BLOCK ASSY WHICH INCLUDES ITEMS 31 & 49)
49	72592	1	ANVIL BUSHING (IF ORDERING ANVIL BUSHING YOU MUST ORDER P/N 72592 ADAPTER BLOCK ASSY WHICH INCLUDES ITEMS 31 & 48)
50	12146	1	SPRING
51	15189	1	ANVIL
52	15182	2	HANDLE BAR
53	15194	2	SET SCREW
54	15170	1	POST DRIVER FOOT
55	20388	1	VALVE ACTUATOR HOUSING
56	74808	1	PD45 NAME TAG
57	03973	1	MALE COUPLER
58	03972	1	FEMALE COUPLER
	04595	1	SEAL KIT



ADAPTORS:
 2" Round Post P/N-15185
 1-3/4" SQ Post P/N- 15184
 2" SQ Post P/N- 15187
 2-1/4" SQ Post P/N- 15186
 1-3/4" Round P/N- 67784

1/2-13 UNC x 1.250" Hex Head Capscrew (GR-5 Minimum)
 P/N- 04661
 Clean ID/OD of threads, apply 242 Loctite or equivalent,
 torque to 50 ft-lbs.