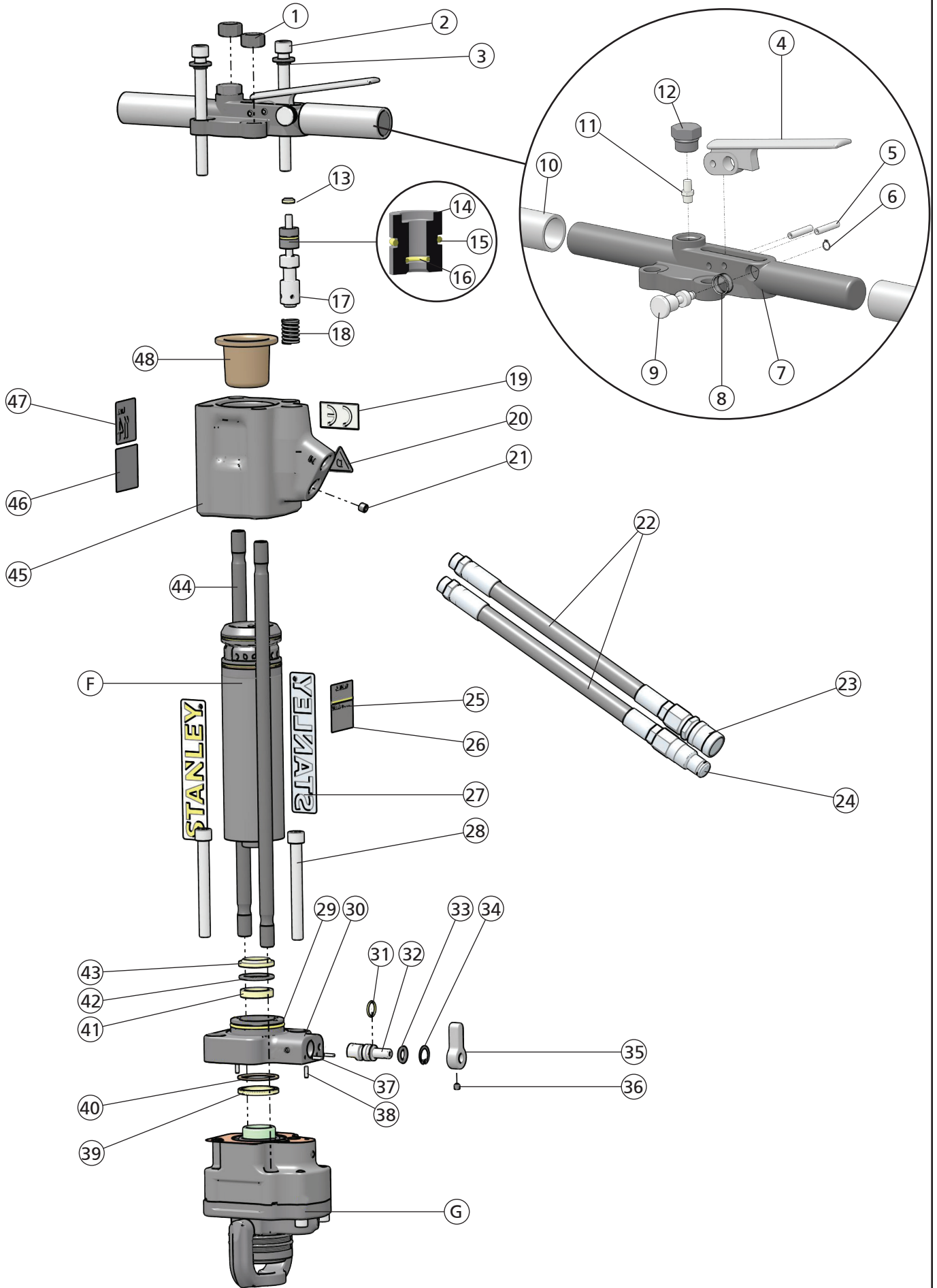
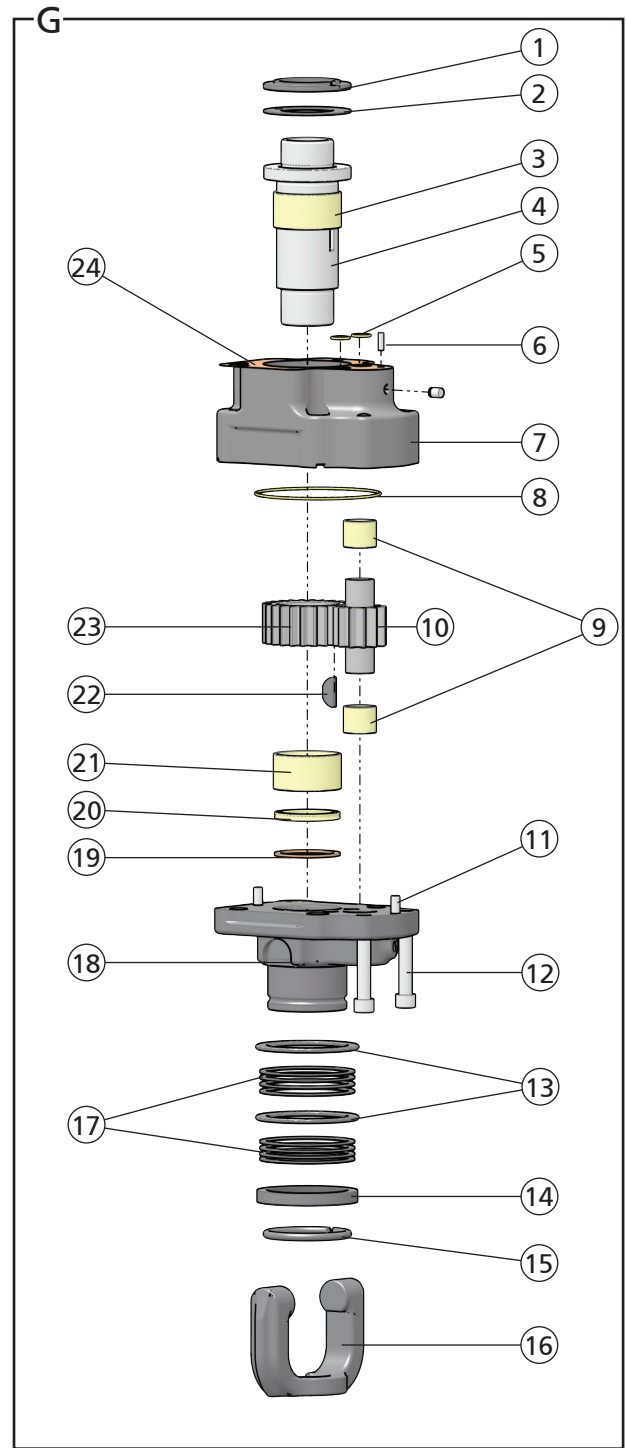
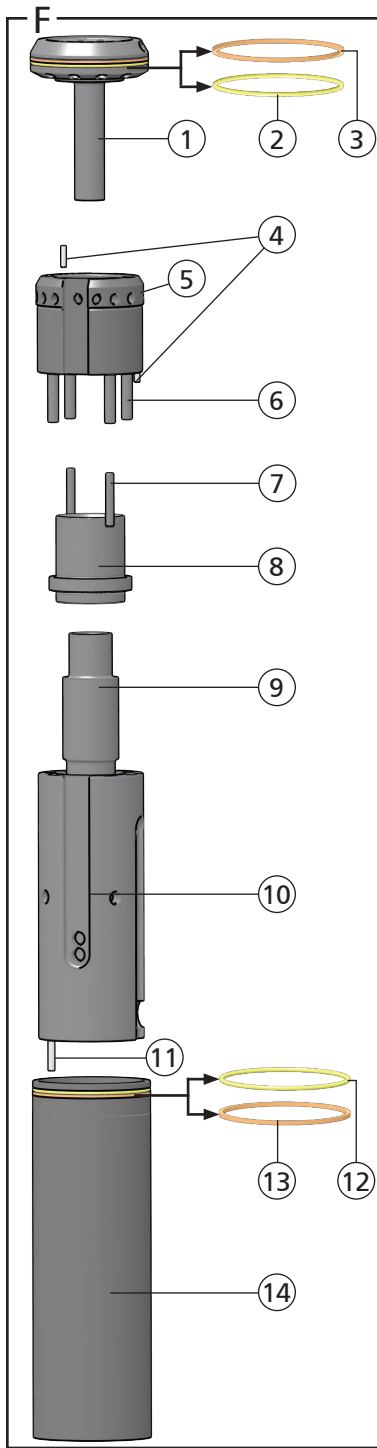


E





HD45 Parts Illustration - Detail E		
ITEM	P/N	DESCRIPTION
1	04374	Lock Nut
2	04372	Capscrew
3	25534	Washer
4	04371	Trigger
5	07492	Spirol Pin
6	00224	Retaining Ring
7	07483	Handle
	11358	Handle (HD4511001 & HD4531001)
8	07593	Spring
9	07594	Trigger Lock (HD4511001, HD4531001)
10	02494	Handle
11	20499	Charge Valve
12	07493	Charge Plug
13	04056	Rod Wiper*
14	04057	Bushing
15	00293	O-ring*
16	01362	O-ring*
17	04077	Valve Spool
18	04058	Spring
19	28322	CE Decal (HD4511001 & HD4531001)
	09612	General Caution Decal (HD45110B, HD45110D, HD46310)
20	11207	Circuit Type "D" Decal (HD4511001, HD4531001)
21	05243	Orifice Plug
22	01652	Hose Assembly
23	03972	Female Coupler
24	03973	Male Coupler
25	87773	Tool Name Tag (HD4511001, HD4531001, HD45310, HD45110B)
26	88345	Importer Decal (HD4511001 & HD4531001)
27	74770	STANLEY Logo Decal
28	04936	Capscrew
29	02022	O-ring
30	04951	Drive Motor Control Block
	06680	Drive Motor Control Block (HD45310, HD4531001)
31	01211	O-ring*
32	04937	Motor Control Valve
33	04938	Washer
34	04940	Retaining Ring
35	04939	Lever
36	01607	Set Screw
37	02900	Roll Pin
38	01749	Roll Pin
39	11196	Quad Ring*
40	11197	Backup Ring*
41	04934	Cup Seal*
42	04780	Washer





HD45 Parts Illustration - Detail E		
ITEM	P/N	DESCRIPTION
43	04386	Cup Seal*
44	04932	Side Rod
45	05988	Accumulator Valve Block
46	88347	Composite Decal (HD4511001, HD4531001)
47	81443	Sound Power Level Decal (HD411001, HD4531001)
48	07479	Accumulator Diaphragm
G	30649	Motor Assembly
	30650	Motor Assembly (HD45310, HD4531001)
SK	05839	Seal Kit (*In seal kit)

HD45 Flow Sleeve Parts Illustration - Detail F		
ITEM	P/N	DESCRIPTION
1	04378	Porting Block
2	04379	O-ring*
3	04381	Backup Ring*
4	02900	Roll Pin
5	04380	Automatic Valve Body
6	04605	Push Pin
7	04571	Push Pin
8	04382	Automatic Valve
9	04954	Piston
10	04384	Flow Sleeve
11	00114	Roll Pin
12	04379	O-ring*
13	04381	Backup Ring*
14	04383	Flow Sleeve Tube

HD45 Motor Parts Illustration - Detail G		
ITEM	P/N	DESCRIPTION
1	04949	Thrust Backup Washer
2	04948	Thrust Washer
3	04947	Bushing
4	04944	Drive Hex
5	00018	O-ring*
6	01749	Roll Pin
7	05976	Motor Chamber
8	01257	O-ring*
9	03826	Bushing
10	04033	Idler Gear
11	00713	Dowel Pin
12	00682	Capscrew
13	04756	Latch Washer
14	04759	Spring Backup
15	04761	Retaining Ring
16	16445	Latch
17	07063	Wave Spring
18	04942	Motor Plate
19	11197	Backup Ring*
20	11196	Quad Ring*

HD45 Motor Parts Illustration - Detail G		
ITEM	P/N	DESCRIPTION
21	04947	Bushing
22	04787	Woodruff Key
23	05975	Drive Gear
	06678	Drive Hex (HD45310, HD4531001)
	04950	Caster*

Safety Precautions

	The Safety Alert Symbol alerts you to potential personal injury hazards. Obey all safety messages that follow to avoid possible injury or death.
	Indicates an imminently hazardous situation which will result in death or serious injury.
	Indicates a potentially hazardous situation which could result in death or serious injury
	Indicates a potentially hazardous situation which could result in property damage.

Always observe safety symbols. They are included for your safety and for the protection of the tool.



WARNING: Read all safety warnings and instructions. Failure to follow warnings and instructions may result in tool damage and/or serious injury.

Warning: To reduce the risk of injury, read the instruction manual.

General

- Do not discard safety instructions. Give to the operator.
- This tool will provide dependable service if operated in accordance with the instructions given in this manual. Read and understand this manual and any stickers and tags attached to the tool and hoses before operation. Failure to do so could result in personal injury or equipment damage.
- Inspect the tool before each use and ensure all decals are legible. Contact STANLEY if replacements are needed.
- Establish a training program for all operators to ensure safe operation. Do not operate the tool unless thoroughly trained or under the supervision of an instructor. Keep out of the reach of children.
- Operators and maintenance personnel shall be able to physically handle the bulk, weight and power of the tool.
- Avoid unsuitable postures as these positions do not allow for counteracting of normal or unexpected movement of the tool, such as a sudden break of the tool bit.
- Do not operate a damaged, improperly adjusted, modified or incompletely assembled tool.
- Do not operate the tool in explosive atmospheres, such as in the presence of flammable liquids, gases or dust. Power tools create sparks which may ignite the dust or fumes.
- Provide adequate ventilation in closed areas when operating a gas or diesel hydraulic power source.
- Do not inspect, carry, clean, change accessories or perform maintenance on the tool while the power source is connected. Accidental engagement of the tool can cause serious injury.
- Ensure work piece is securely fixed. Be aware that failure of the work piece or accessories may generate high velocity projectiles.
- Stay alert, watch what you are doing and use common sense when operating a hydraulic tool. Do not operate this tool if you are tired or under the influence of drugs or alcohol. A moment of inattention while operating hydraulic tools may result in serious injury.
- Assess risks to others around you before operating the tool.
- During operation, do not contact mechanisms, accessories or hardware as they can become very hot or sharp; use your Personal Protection Equipment (PPE).
- Use and maintain the tool as stated in this manual. Misuse of the tool can cause serious injury. Do not modify the tool in any way.
- Supervising personnel should develop additional precautions relating to the specific work area and local safety regulations.
- Never operate the tool if you are unsure about the presence of underground utilities, such as electrical cables, gas pipes, etc. These can

cause a hazard if damaged with the tool.

- The tool is not insulated against coming into contact with electric power. Use hose certified as non-conductive.
- Do not overreach. Maintain proper footing and balance at all times when using the tool.
- Slips, trips and falls are major causes of workplace injury. Be observant of hoses lying about the work area, as they can be a tripping hazard.
- Operators must start in a work area without bystanders and must assess the risks to bystanders.
- Operators must be familiar with all prohibited work areas such as excessive slopes and dangerous terrain conditions.
- Only use clean hydraulic fluid, filling equipment and lubricants that have been recommended by STANLEY.
- Ensure tools are working properly and safely by performing preventative maintenance (PM) procedures.
- Repair and service of this tool must only be performed by an authorized and certified dealer.
- Do not force the tool to do the work of a larger tool. Use the correct tool for your application.
- Use only hoses and hose couplings that are rated for a minimum working pressure of 2500 PSI (172 BAR).
- Keep hands away from rotating chuck or drill bits.
- In spite of the application of relevant safety regulations and the implementation of safety devices, certain residual risks cannot be avoided. These risks are: repetitive strain injury due to incorrect posture and risk of pinching fingers when changing tool bit or pressing trigger.

Dust and Fumes

- WARNING:** Some dust created by power sanding, sawing, grinding, drilling, and other construction activities contains chemicals known to the State of California to cause cancer, birth defects or other reproductive harm. Some examples of these chemicals are:
 - Lead from lead-based paints,
 - crystalline silica from bricks and cement and other masonry products, and
 - arsenic and chromium from chemically-treated lumber.

Your risk from these exposures varies, depending on how often you do this type of work. To reduce your exposure to these chemicals: work in a well ventilated area, and work with approved safety equipment, such as those dust masks that are specially designed to filter out microscopic particles.

Protect yourself and those around you. Research and understand the materials you are grinding. Follow correct safety procedures and comply with all applicable national, state or provisional health and safety regulations relating to them, including, if appropriate arranging for the safe disposal of the materials by a qualified person.

- When dust or fumes are created, control them at the point of emission. Direct tool exhaust to minimize disturbance of dust.
- Use respiratory protection in accordance with employers instruction or as required by occupational health and safety regulations.
- Avoid prolonged contact with dust. Allowing dust to get into your mouth, eyes or lay on the skin may promote absorption of harmful chemicals.
- Select and replace tool bits as recommended in order to prevent an unnecessary increase in dust or fumes.
- Keep tool handles dry, clean and free from oil and grease. This will enable better control of the tool.
- Operate and maintain the tool as recommended in this manual to minimize dust.

PPE

- Always wear safety equipment such as impact resistant goggles, ear protection, head protection, breathing protection and safety shoes at all times when operating the tool.
- Hands may be exposed to hazards, impacts, cuts, abrasions and heat. Wear gloves.
- Wear a hardhat if performing overhead work.
- Use PPE that conforms to standards ANSI Z87.1 (Eye and Face Protection), ANSI Z89.1 (Head Protection), ANSI Z41.1 (Foot Protection) and ANSI S12.6 (S3.19) (Hearing Protection).
- Do not wear loose fitting clothing or jewelry when operating the tool. Entanglement, choking, scalping and laceration can occur if loose clothing, personal jewelry, neck wear, hair or gloves are not kept away