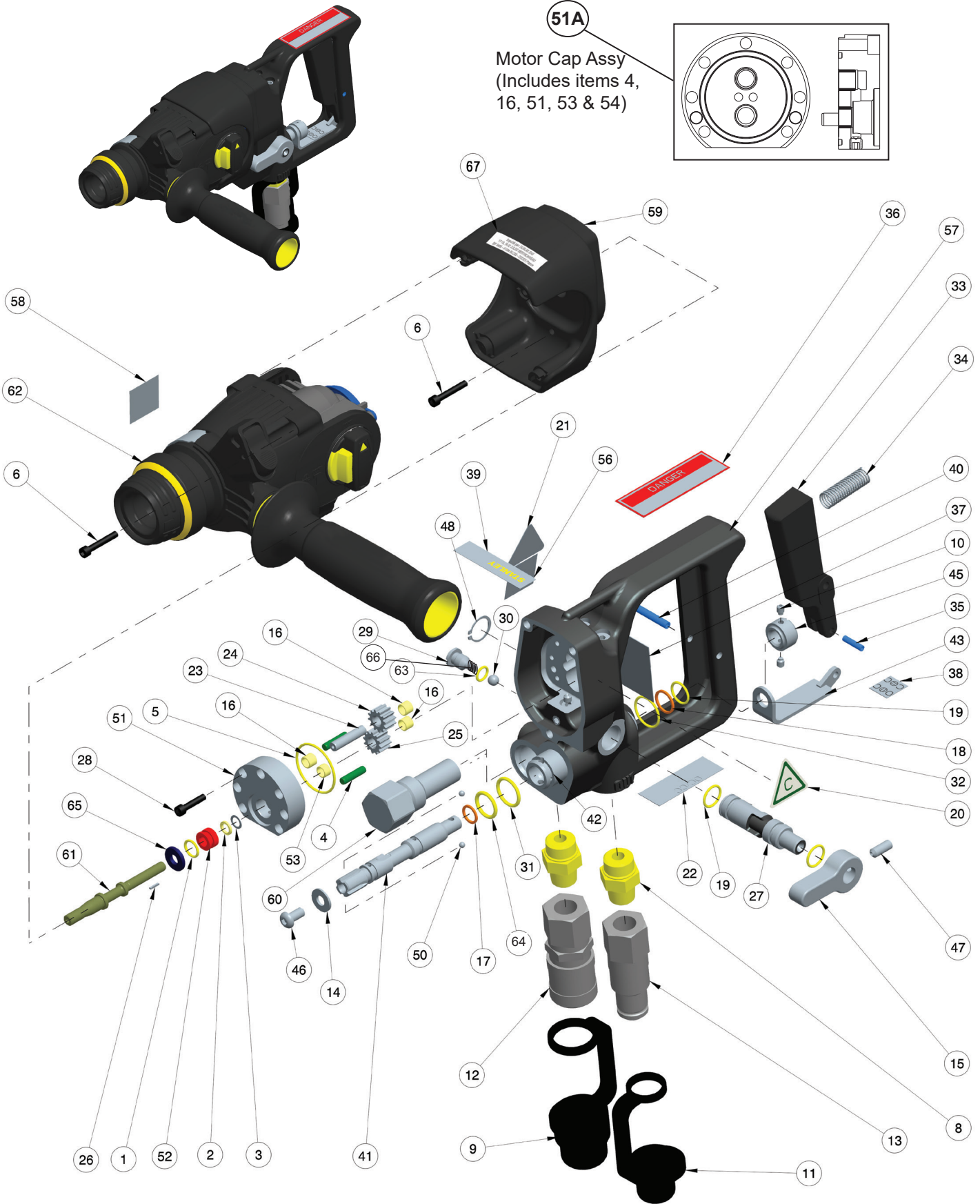
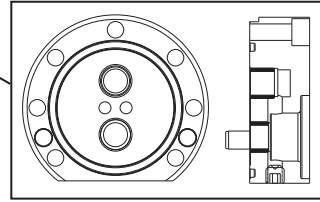


# HD01 PARTS ILLUSTRATION

51A

Motor Cap Assy  
(Includes items 4, 16, 51, 53 & 54)



# HD01 PARTS LIST

ITEM	P/N	QTY	DESCRIPTION
1	00106	1	* O-RING 3/8 X 1/2 X 1/16 -012
2	00112	1	* QUAD RING 1/4 X 3/8 X 1/16 -010
3	00179	1	MOTOR SEAL WASHER
4	00289	2	DOWEL PIN 3/16 X 3/4 LG.
5	00621	1	* O-RING 1-1/4 X 1-3/8 X 1/16 -026
6	00779	7	HSHCS 8-32 X 1.000
7	00783	7	PIPE PLUG (NOT PICTURED) PART OF ITEM 57
8	00936	2	ADAPTER -8 (1/2) SAE X 3/8 NPT
9	02324	1	CAP & PLUG 1/2"
10	02837	2	SETSCREW 10-24 X 1/4
11	03288	1	CAP & PLUG 3/8"
12	03972	1	COUPLER,3/8FEM.3/8NPTFL.FACESET 03971
13	03973	1	COUPLER,3/8MALE 3/8NPT FL.FACE SET 03971
14	04539	1	WASHER 1/4" I.D.
15	04939	1	LEVER
16	05205	3	BUSHING, GARLOCK 04DU04
17	07223	1	* BACK-UP RING -012
18	07224	1	* BACK-UP RING -014
19	07626	3	* O-RING 1/2 X 5/8 X 1/16 -014
20	11206	1	CIRCUIT TYPE "C" STICKER
21	11207	1	CIRCUIT TYPE "D" STICKER
22	11354	1	OC/CC STICKER
23	15890	1	IDLER SHAFT
24	15894	1	IDLER GEAR
25	15895	1	DRIVE GEAR
26	15896	1	KEY
27	15904	1	REVERSING SPOOL
28	15909	7	HSHCS 8-32 X 3/4
29	15956	1	CHECK PLUG
30	15966	1	STEEL BALL 9/32
31	17924	1	* O-RING .644 X .818 X .087 -908
32	16555	1	* O-RING 3/4 X 7/8 X 1/16 -018
33	16598	1	TRIGGER
34	16647	1	COMPRESSION COIL SPRING
35	16648	1	ROLL PIN 5/32 O.D. X .625 LG.
36	17160	1	DANGER STICKER
37	09612	1	GENERAL CAUTION STICKER
38	17162	1	OC/CC STICKER
39	76648	1	TOOL NAME TAG
40	17668	1	ROLL PIN 3/16 O.D. X 1.250 LG.

ITEM	P/N	QTY	DESCRIPTION
41	17811	1	SPOOL OC/CC
42	----	1	ON/OFF VALVE SLEEVE (PART OF ITEM 57)
43	17815	1	TRIGGER STRUT
44	----	--	ON ITEM
45	17817	1	KNOB OC/CC
46	17821	1	1/4-20 X 1/2 BUTTON HEAD H.S.
47	17897	1	SETSCREW 1/4-20 X .625
48	17904	1	RETAINING RING EXTERNAL
49	18277	7	HELICOIL 8-32 UNC (NOT PICTURED) PART OF ITEM 57
50	21338	2	STEEL BALL 5/32
51	23326	1	MOTOR CAP
51A	23330	1	MOTOR CAP ASSY (INCLUDES ITEMS 4, 16, 51, 53 & 54)
52	23327	1	SEAL LINER
53	23328	1	MODIFIED DU BEARING
54	23329	1	SETSCREW (NOT PICTURED) PART OF ITEM 57
56	88348	1	STICKER - MANUAL
57	47451	1	MAIN HOUSING ASSEMBLY INCLUDES ITEMS 7, 16, 29-32, 42, 49, & 63
58	81435	1	SOUND POWER LEVEL STICKER
59	72638	1	ADAPTOR ASSY
60	72728	1	PRIORITY FLOW CONTROL 5 GPM
61	72729	1	MOTOR SHAFT
62	72733	1	DEWALT GEARBOX ASSEMBLY
63	350792	1	* O-RING .301 X .365 X .064 -903
64	350810	1	* O-RING 9/16 X 3/4 X 3/32 -113
65	72915	1	WASHER
66	01602	1	COMPRESSION COIL SPRING
	73018	1	LOCK-OUT KIT (SHIPS UNINSTALLED)
	28323	1	CEDECAL-NOT PICTURED, ATTACHED ON SIDE OF GEARBOX.
67	88344	1	IMPORTER DECAL

\* DENOTES PART IN SEAL KIT  
SEAL KIT PART NUMBER 72864

HD01 SERVICE KIT 72661 (INCLUDES ITEM NUMBER 6, 59, 60, 61 and 62)