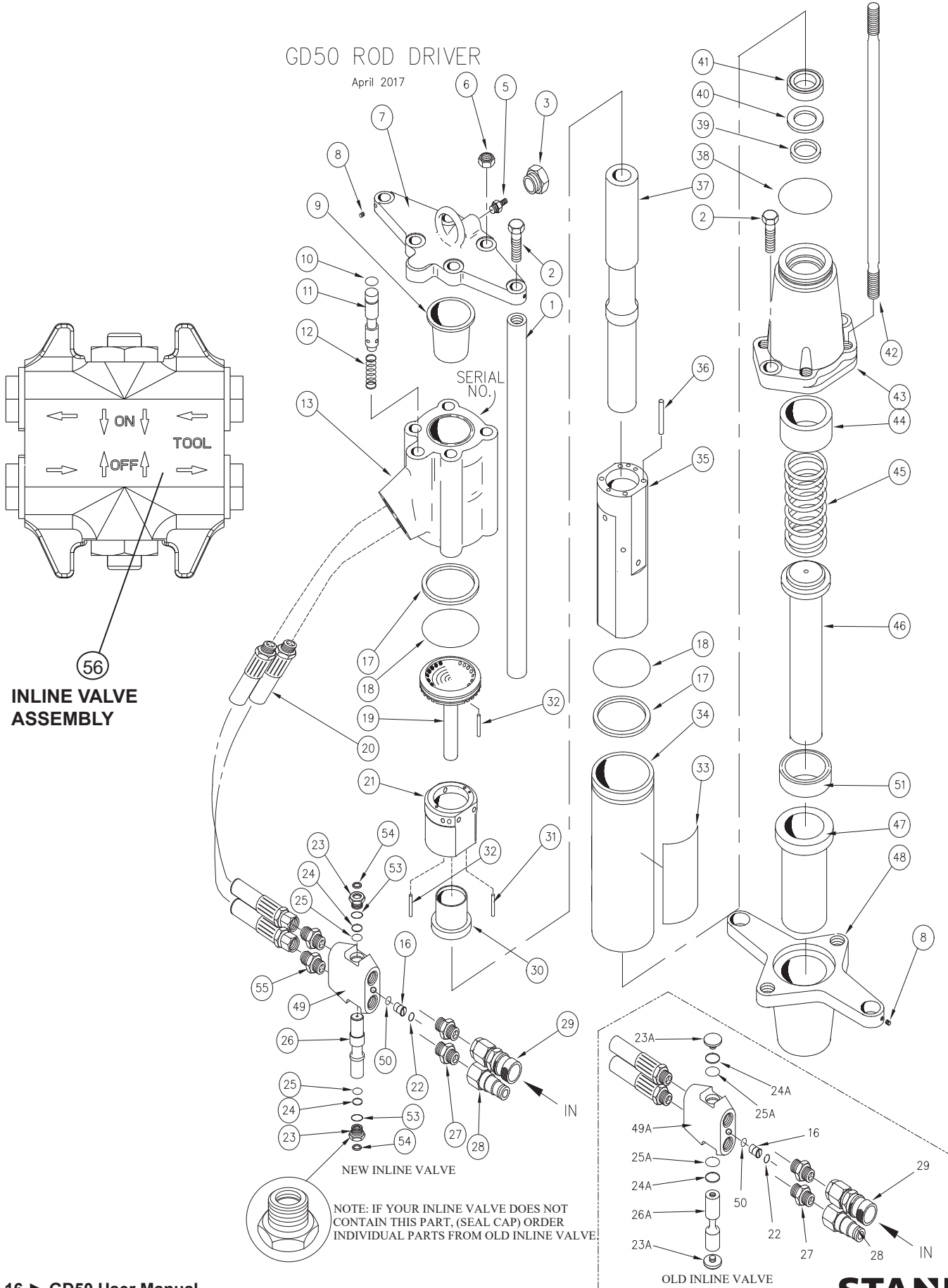


# GD50 PARTS ILLUSTRATION

## GD50 ROD DRIVER

April 2017



# GD50 PARTS LIST

ITEM	PART NO.	QTY	DESCRIPTION
1	35770	2	HANDLE BAR
2	370351	4	CAPSCREW
3	07493	1	O-RING PLUG-MALE
4	05243	1	ORIFICE PLUG (INCL W/ ITEM 13)
5	20499	1	CHARGE VALVE
6	04374	4	LOCK NUT
7	15190	1	TOP PLATE
8	00720	4	SET SCREW
9	07479	1	DIAPHRAGM
10	00293	1	O-RING
11	15188	1	VALVE SPOOL
12	04058	1	SPRING
13	11588	1	ACCUMULATOR VALVE BLOCK
16	10536	1	SELECTOR SCREW
17	04381	2	BACK-UP RING
18	04379	2	O-RING
19	04378	1	PORTING BLOCK
20	35784	2	HOSE ASSY
21	07480	1	AUTOMATIC VALVE BODY
22	16070	1	RETAINING RING
23	56749	2	SEAL CAP (NEW INLINE VALVE)
23A	01003	2	VALVE BUTTON (OLD INLINE VALVE)
24	07224	2	BACK-UP RING (NEW INLINE VALVE)
24A	13568	2	BACK-UP RING (OLD INLINE VALVE)
25	07626	2	O-RING (NEW INLINE VALVE)
25A	13567	2	O-RING (OLD INLINE VALVE)
26	67008	1	VALVE SPOOL (NEW INLINE VALVE)
26A	38631	1	VALVE SPOOL (OLD INLINE VALVE)
27	00936	2	ADAPTOR
28	03973	1	MALE COUPLER BODY
29	03972	1	FEMALE COUPLER BODY
30	04382	1	AUTOMATIC VALVE
31	04571	2	PUSH PIN
32	02900	2	ROLL PIN
33	37425	1	NAME TAG
34	04383	1	FLOW SLEEVE TUBE
35	04384	1	FLOW SLEEVE
36	04605	4	PUSH PIN
37	04954	1	PISTON
38	02022	1	O-RING
39	04387	1	WIPER RING
40	04780	1	BACK-UP WASHER
41	04386	1	CUP SEAL
42	12139	4	SIDE ROD
43	43527	1	ADAPTOR BLOCK

ITEM	PART NO.	QTY	DESCRIPTION
44	72592	1	ADAPTOR BLOCK ASSY (INCLUDES UPPER ANVIL STOP)
45	12146	1	SPRING
46	36106	1	ROD ANVIL, 5/8 INCH RODS (MODEL GD50132RF)
	35751	1	ROD ANVIL, 3/4 TO 1 IN. RODS (MODEL GD50133RF)
47	65812	1	ANVIL GUIDE
48	35753	1	GUIDE HOUSING
49	67007	1	VALVE BODY ASSY. (NEW INLINE VALVE)
49A	38629	1	VALVE BODY ASSY. (OLD INLINE VALVE)
50	00026	1	O-RING
51	65813	1	BUMPER
52	371071	2	WASHER
53	01604	2	O-RING (NEW INLINE VALVE)
54	56747	2	SEAL WIPER (NEW INLINE VALVE)
55	00856	2	ADAPTOR
56	72264	1	INLINE VALVE ASSEMBLY

Model GD50132RF—1/2 and 5/8 inch rods.

Model GD50133RF—3/4 and 1 inch rods.

**Verify the correct model number before ordering.**

#### Seal Kit

**GD50 Rapid Fire Model—04595**

**All Other GD50 Models—13552**

### Read Before Ordering Inline Valve Parts:

#### Inline Valve Assembly (OC-CC) - 72264

**Includes Items (16, 22 thur 26, 49, 50, 53, and 54)**

The inline valve changed around June 2011. To determine if you have the old or new inline valve, see parts illustration.

**Note: Individual parts are still available for the older inline valve but if replacing the entire inline valve assy, you must order the new inline valve assy P/N-72264.**