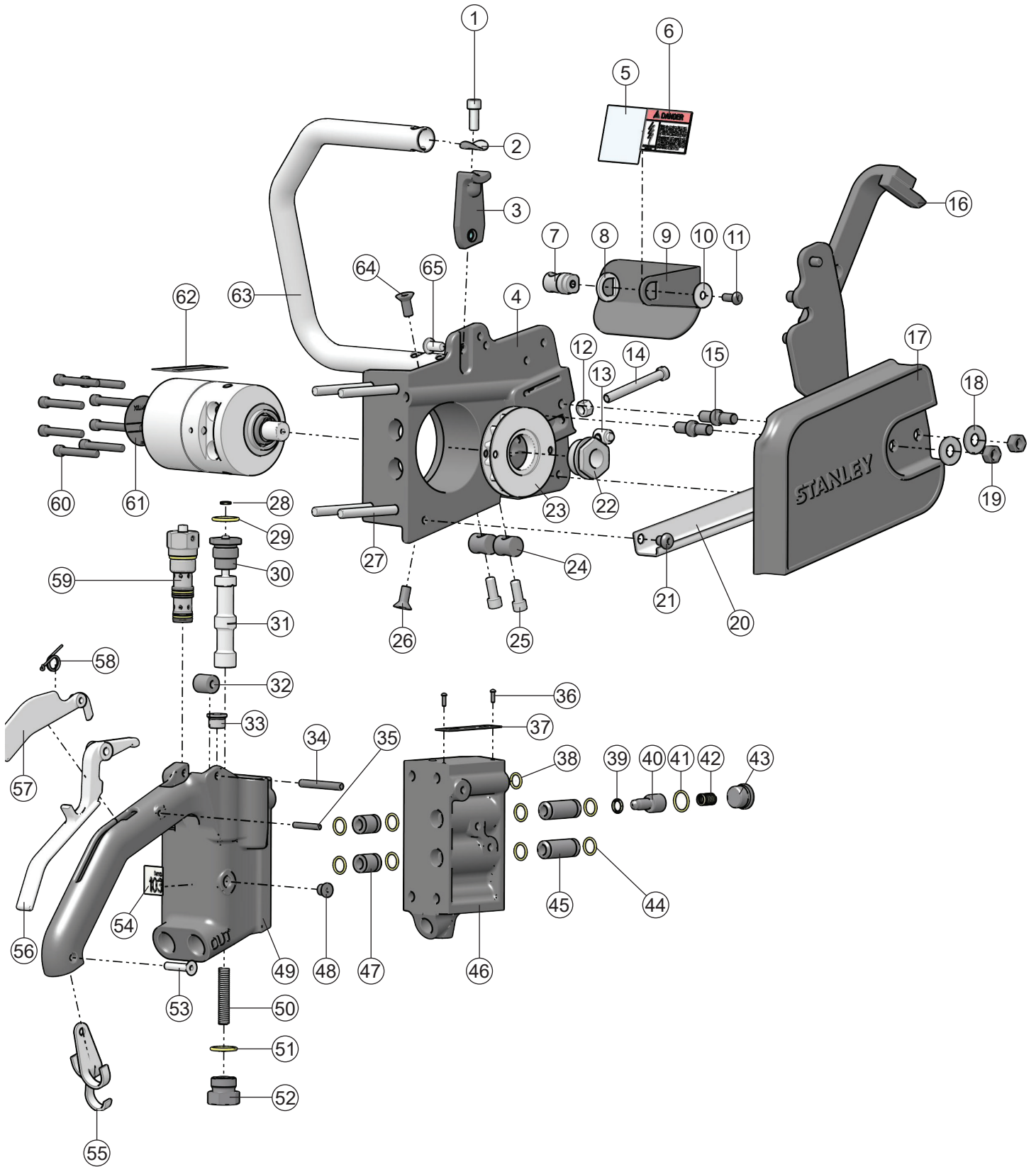


DS11 PARTS ILLUSTRATION



DS11 PARTS LIST

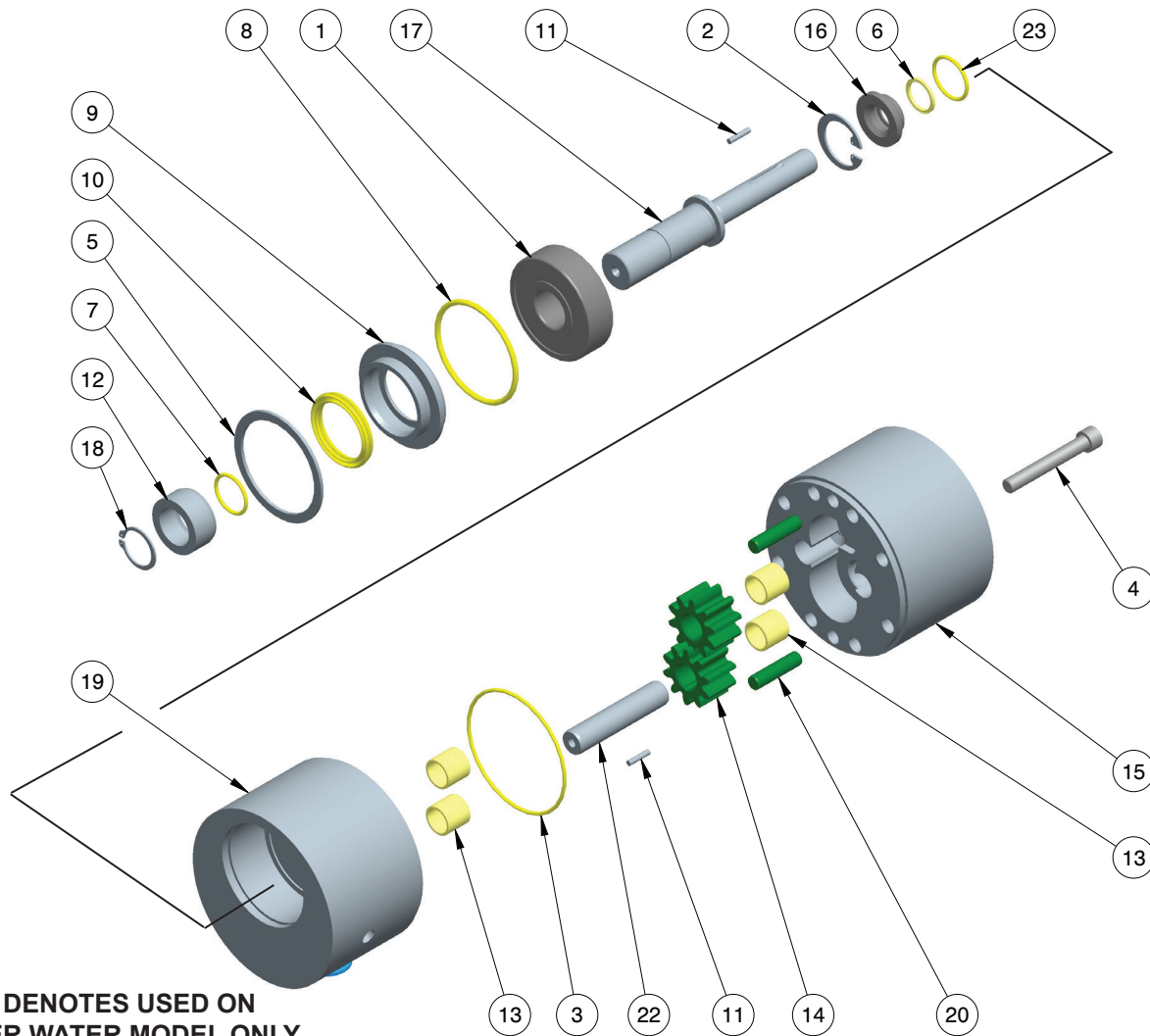
ITEM	PART NO.	QTY	DESCRIPTION
1.	02764	3	CAP SCREW - 5/16-18 X 3/4
2.	02643	3	WASHER
3.	20461	1	HANDLE STRUT
4.	22713	1	CHAIN SAW ADAPTOR
5.	88347	1	COMPOSITE SAFETY STICKER
6.	12412	1	ELECTRICAL DANGER STICKER
7.	81779	1	HANDLE RETAINER
8.	73583	1	HANDLE SPACER
9.	73582	1	HAND GUARD
10.	33261	1	WASHER
11.	33260	1	CAP SCREW - 1/4-20 X 5/8
12.	22752	1	NYLOCK NUT - 5/16-18 UNC
13.	22702	1	BAR ADJUSTMENT NUT
14.	22714	1	SCREW - 5/16-18 X 2.750
15.	20465	2	STUD
16.	23176	1	WALL WALKER
17.	22711	1	CHAIN GUARD
18.	02766	2	WASHER
19.	03276	2	HEX NUT - 3/8-16 UNC
20.	22945	1	CHAIN COVER
21.	23196	2	CAP SCREW - 5/16 UNC X 3/8 HSBH
22.	20471	1	TRANTORQUE ADAPTER - TORQUE TO 23-30 FT. LBS.
23.	20470	1	DRIVE SPROCKET
24.	02649	2	HANDLE RETAINER
25.	02764	3	CAP SCREW - 5/16-18 X 3/4
26.	03006	4	CAP SCREW - 5/16-18 X 3/4 HSFT
27.	01758	4	CAP SCREW - 5/16-18 X 3-1/2
28.	00112	1	QUAD RING - 1/4 X 3/8 X 1/16-010*
29.	01604	2	O-RING - .755 X .949 X .097-910*
30.	02931	1	ON-OFF VALVE CAP
31.	02925	1	VALVE SPOOL
32.	02920	1	ON-OFF VALVE SPACER
33.	08104	1	PLUG
34.	31804	1	ROLL PIN
35.	74841	1	ROLL PIN
36.	02004	2	DRIVE SCREW
37.	76544	1	CE TOOL PLATE
38.	00018	1	O-RING - 7/16 X 9/16 X 1/16-013*
39.	25260	1	QUAD RING - 3/8 X 1/2 X 1/16-012*
40.	20463	1	WATER VALVE
41.	01211	1	O-RING - 5/8 X 3/4 X 1/16-016*
42.	20458	1	SPRING
43.	350237	1	PLUG
44.	00175	8	O-RING - 1/2 X 5/8 X 1/16-014*
45.	02912	2	OIL TUBE
46.	20453	1	EXTENSION HOUSING

ITEM	PART NO.	QTY	DESCRIPTION
47.	00174	2	OIL TUBE
48.	350023	1	PLUG
49.	28552	1	HANDLE ASSEMBLY - INCLUDES PART 08104 - MUST PURCHASE WITH PART 74841.
50.	02916	1	SPRING
51.	01604	2	O-RING - .755 X .949 X .097-910*
52.	09437	1	PLUG
53.	00787	1	CAP SCREW - 1/4-20 X 1-1/4 HSFT SST
54.	88356	1	SOUND POWER STICKER
55.	20459	1	HOSE CLIP
56.	22707	1	TRIGGER
57.	22704	1	SAFETY CATCH
58.	22701	1	SPRING
59.	71799	1	FLOW REGULATOR CARTRIDGE (DS113000)
	71835	1	FLOW REGULATOR CARTRIDGE (DS115000)
60.	00208	8	CAP SCREW - 1/4-20 X 1-3/4
61.	74804	1	TOOL NAME TAG (DS113000)
	74807	1	TOOL NAME TAG (DS115000)
62.	09612	1	GENERAL CAUTION STICKER
63.	02936	1	HANDLE (DS113000)
	23754	1	HANDLE (DS115000)
64.	03006	4	CAP SCREW - 5/16-18 X 3/4 HSFT
65.	22715	1	CAP SCREW - 5/16-18 X 5/8
66.	11207	1	CIRCUIT TYPE "D" STICKER (DS113000) - NOT SHOWN
	12535	1	CIRCUIT TYPE "E" STICKER (DS115000) - NOT SHOWN

*SEAL KIT P/N 22798

00018	O-RING	1
00112	QUAD RING	1
00173	QUAD RING	1
00175	O-RING	8
00178	O-RING	1
00669	QUAD RING	1
01211	O-RING	2
01604	O-RING	2
01605	O-RING	3
02905	O-RING	1
03110	TEFLON SEAL	1
03847	HOSE WASHER	1
25260	QUAD RING	1
350771	O-RING	1

DS11 MOTOR PARTS LIST



U/W - DENOTES USED ON UNDER WATER MODEL ONLY

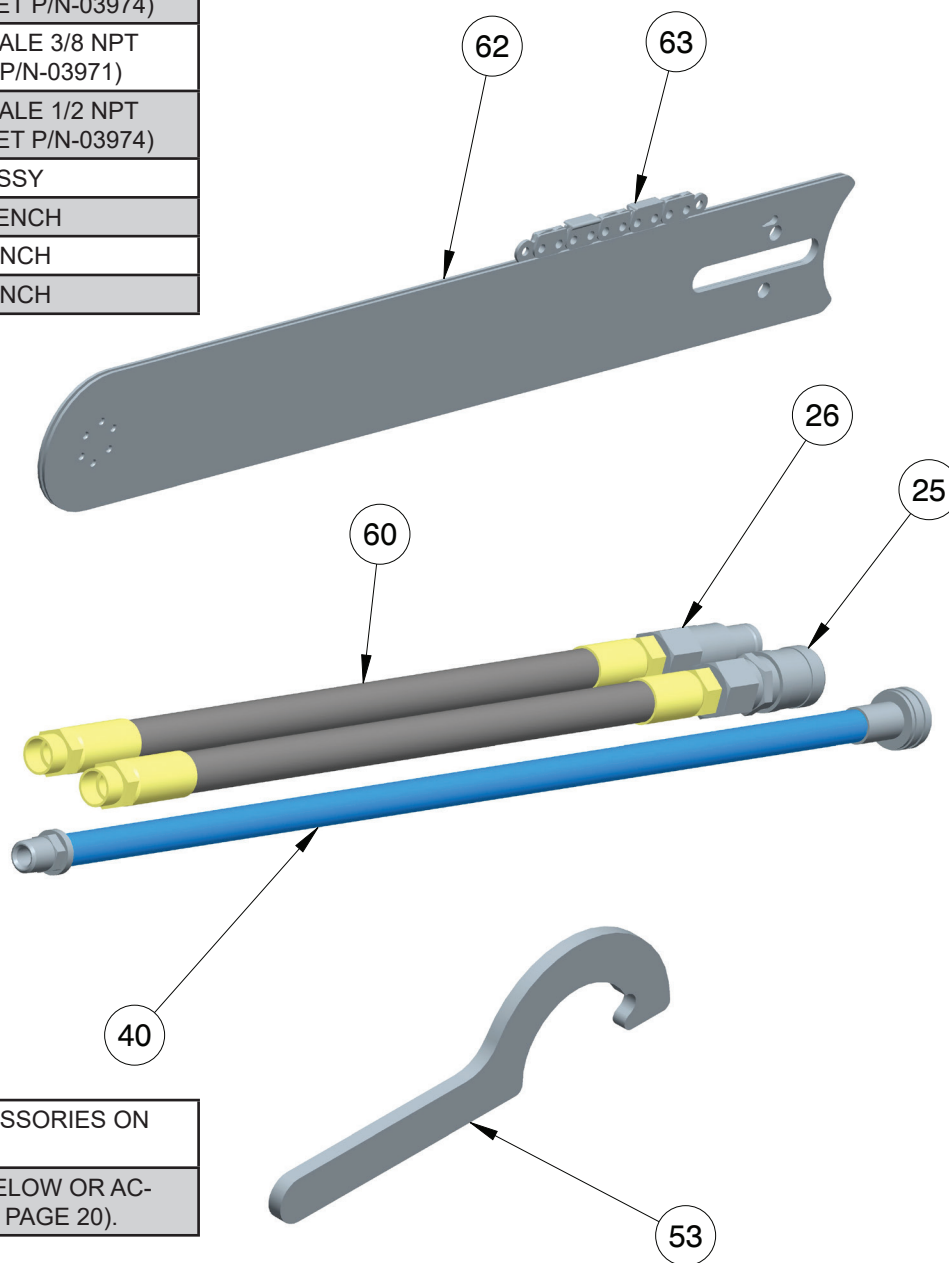
ITEM	PART NO..	QTY	DESCRIPTION
1	00148	1	BEARING
2	00170	1	RETAINING RING
3	00178	1	O-RING*
4	00208	8	HSHCS 1/4-20 X 1-3/4
	00612	8	CAPSCREW (U/W DS115000)
5	00633	1	RET RING SPIROLOX INTERNAL
6	00669	1	QUAD RING*
7	01211	1	O-RING*
8	02905	1	O-RING*
9	03104	1	KEEPER-SEAL & BEARING
10	03110	1	ROTARY SHAFT SEAL *
11	03227	2	DOWEL PIN
	06881	2	DOWEL PIN (U/W DS115000)
12	03280	1	SPACER, SEAL RACE
13	06316	2	BUSHING, GARLOCK
14	06838	2	DRIVE GEAR
	06853	2	DRIVE GEAR (U/W DS115000)

ITEM	PART NO..	QTY	DESCRIPTION
15	06861	1	GEAR HOUSING ASSY (INCLUDES ITEMS 13 & 20)
	31849	1	GEAR HOUSING ASSY (U/W DS115000) Incds Items 13 & 20
16	19884	1	SEAL GLAND
17	20466	1	MOTOR SHAFT
	23752	1	MOTOR SHAFT (U/W)
18	20472	1	RETAINING RING EXTERNAL
19	21436	1	FRONT BEARING HOUSING ASSY (INCLUDES ITEM 13 & EXPANDER PLUGS)
20	25444	2	DOWEL PIN 1/4 X 1
	73308	1	IDLER SHAFT KEYED
	73309	1	IDLER SHAFT KEYED (U/W DS115000)
23	350771	1	O-RING*

* Part of Seal Kit 22798

DS11 PARTS LIST

ITEM	P/N	QTY	DESCRIPTION
25	03972	1	COUPLER 3/8 FEM 3/8 NPT (COUPLER SET P/N-03971)
	03975	1	COUPLER 3/8 FEM 1/2 NPT (FLUSH FACE SET P/N-03974)
26	03973	1	COUPLER 3/8 MALE 3/8 NPT (COUPLER SET P/N-03971)
	03976	1	COUPLER 3/8 MALE 1/2 NPT (FLUSH FACE SET P/N-03974)
40	20497	1	WATER HOSE ASSY
53	23517	1	SPROCKET WRENCH
60	56725	2	HOSE ASSY 18 INCH
	06830	2	HOSE ASSY 18 INCH



62	-----	1	BAR (SEE ACCESSORIES ON PAGE 20)
63	-----	1	CHAINS (SEE BELOW OR ACCESSORIES ON PAGE 20).

DIAMOND CHAIN APPLICATIONS

MODEL	BAR LENGTH	P/N	CORRECT APPLICATIONS
PINNACLE-32 PINNACLE-37	15 INCH 18 INCH	56803 58632	VERY HARD AGGREGATE CONCRETES (FLINT, CHERT, GRANITE, ETC). HEAVY STEEL REINFORCING, 5/8 INCH/16 MM DIAMETER AND LARGER. MEDIUM/HARD AGGREGATE CONCRETES (GRANITE, QUARTZ, RIVER ROCK, ETC). MODERATE STEEL REINFORCING (WIRE MESH 3/8-1/2 INCH/10-12 MM DIAMETER). SOFT AGGREGATE CONCRETE, CONCRETE BLOCK, MASONRY, "GREEN" CONCRETE, HIGHLY ABRASIVE CONDITIONS.
ULTRA-32 ULTRA-37	15 INCH 18 INCH	56801 56802	MEDIUM/HARD AGGREGATE CONCRETES (GRANITE, QUARTZ, RIVER ROCK, ETC). MODERATE STEEL REINFORCING (WIRE MESH 3/8-1/2 INCH/10-12 MM DIAMETER). SOFT AGGREGATE CONCRETE, CONCRETE BLOCK, MASONRY, "GREEN" CONCRETE, HIGHLY ABRASIVE CONDITIONS.