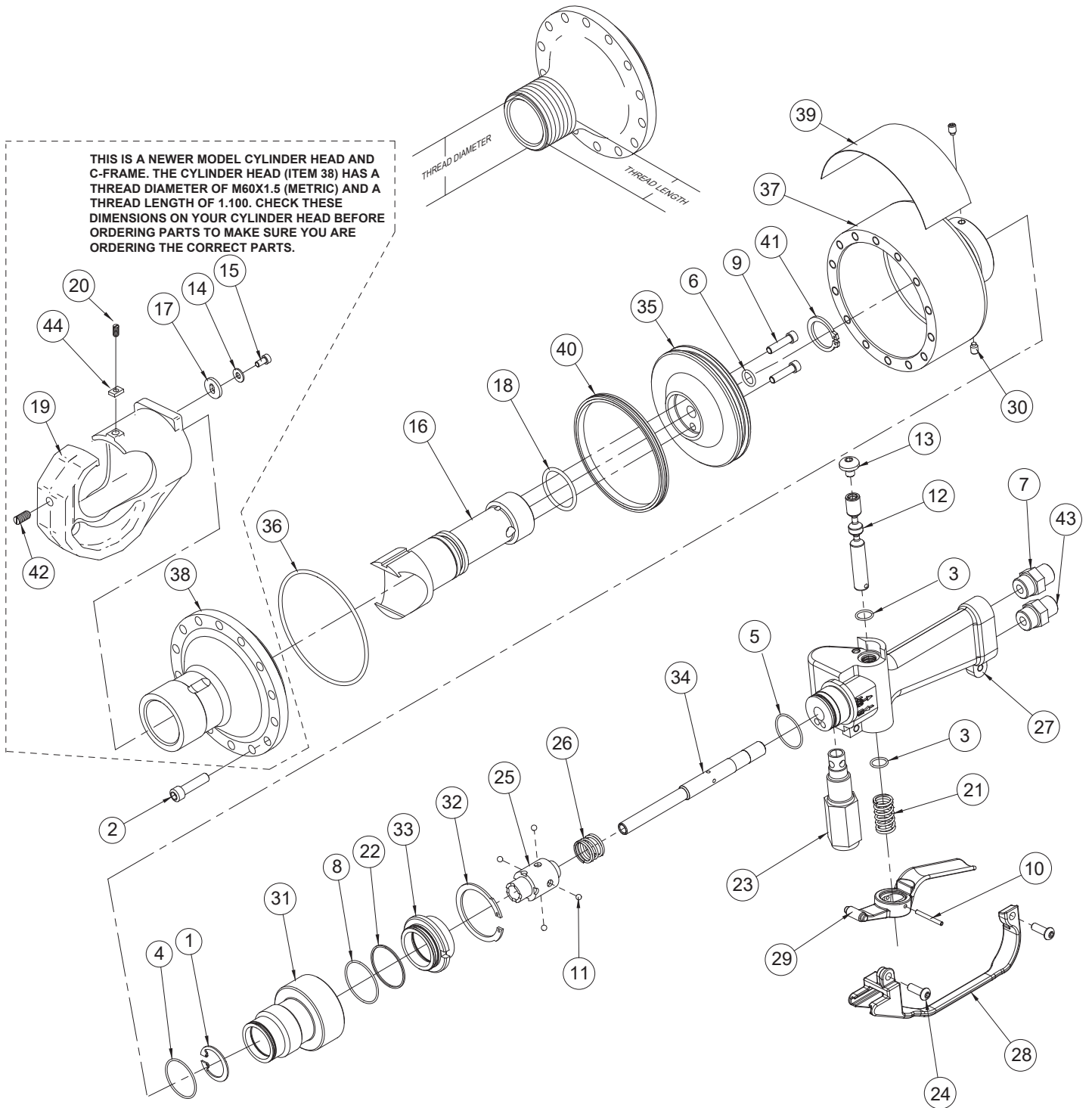


CT10016N PARTS ILLUSTRATION

THIS IS A NEWER MODEL CYLINDER HEAD AND C-FRAME. THE CYLINDER HEAD (ITEM 38) HAS A THREAD DIAMETER OF M60X1.5 (METRIC) AND A THREAD LENGTH OF 1.100. CHECK THESE DIMENSIONS ON YOUR CYLINDER HEAD BEFORE ORDERING PARTS TO MAKE SURE YOU ARE ORDERING THE CORRECT PARTS.

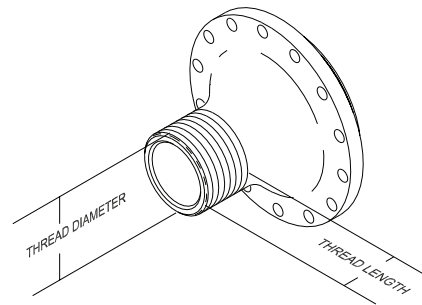


CT10016N PARTS LIST

Item No.	Part No.	Qty	Description
1	00118	1	Retaining Ring
2	00144	14	Cap screw
3	07626	2	O-Ring
4	09330	1	O-Ring
5	00294	1	O-Ring
6	00360	1	O-Ring
7	00936	2	Adapter
8	01259	1	O-Ring
9	01521	2	Cap screw
10	01534	1	Roll Pin
11	01608	4	Steel Ball
12	01809	1	Valve Spool
13	01812	1	Valve Spool Screw
14	03014	1	Washer
15	67281	1	Cap screw
16	06324	1	Die Piston Assy.
17	06326	1	Washer
18	06332	1	O-Ring
19	66588	1	C-Frame, Head Unit 26mm Assembly (Includes Items 20, 42 & 44)
20	67279	1	Set Screw
21	16556	1	Spring
22	18050	1	Back-Up Ring
23	21424	1	Relief Valve
24	22147	2	Cap screw
25	38622	1	Valve Sleeve
26	39925	1	Compression Spring
27	39939	1	Valve Handle
28	51182	1	Trigger Guard
29	51183	1	Trigger
30	52534	2	Setscrew
31	58439	1	Adapter
32	58440	1	Retaining Ring
33	58441	1	Sleeve
34	58442	1	Oil Tube
35	58480	1	Piston
36	58485	1	O-Ring
37	58493	1	Cylinder
38	67276	1	Cylinder Head (See Note 1)
39	76652	1	Sticker

Item No.	Part No.	Qty	Description
40	58583	1	T-Seal
41	58594	1	Retaining Ring
42	67277	1	Set Screw
43	67259	1	Check Valve Assembly
44	67280	1	Key
SK1	58551	1	Seal Kit (Includes Items 3-6, 8, 18, 22, 36 & 40)

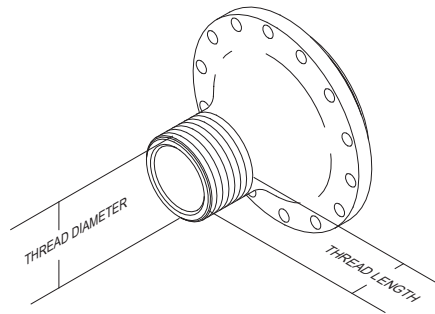
Note 1: Item 38 can be identified by measuring the length of the threads (see figure below). The length of threads for item 38 is 1.100 inches and the thread diameter is M60x1.5. For older models consult the factory.



To determine which model you have, measure the thread length and diameter on the cylinder head. Older models have different cylinder head dimensions.

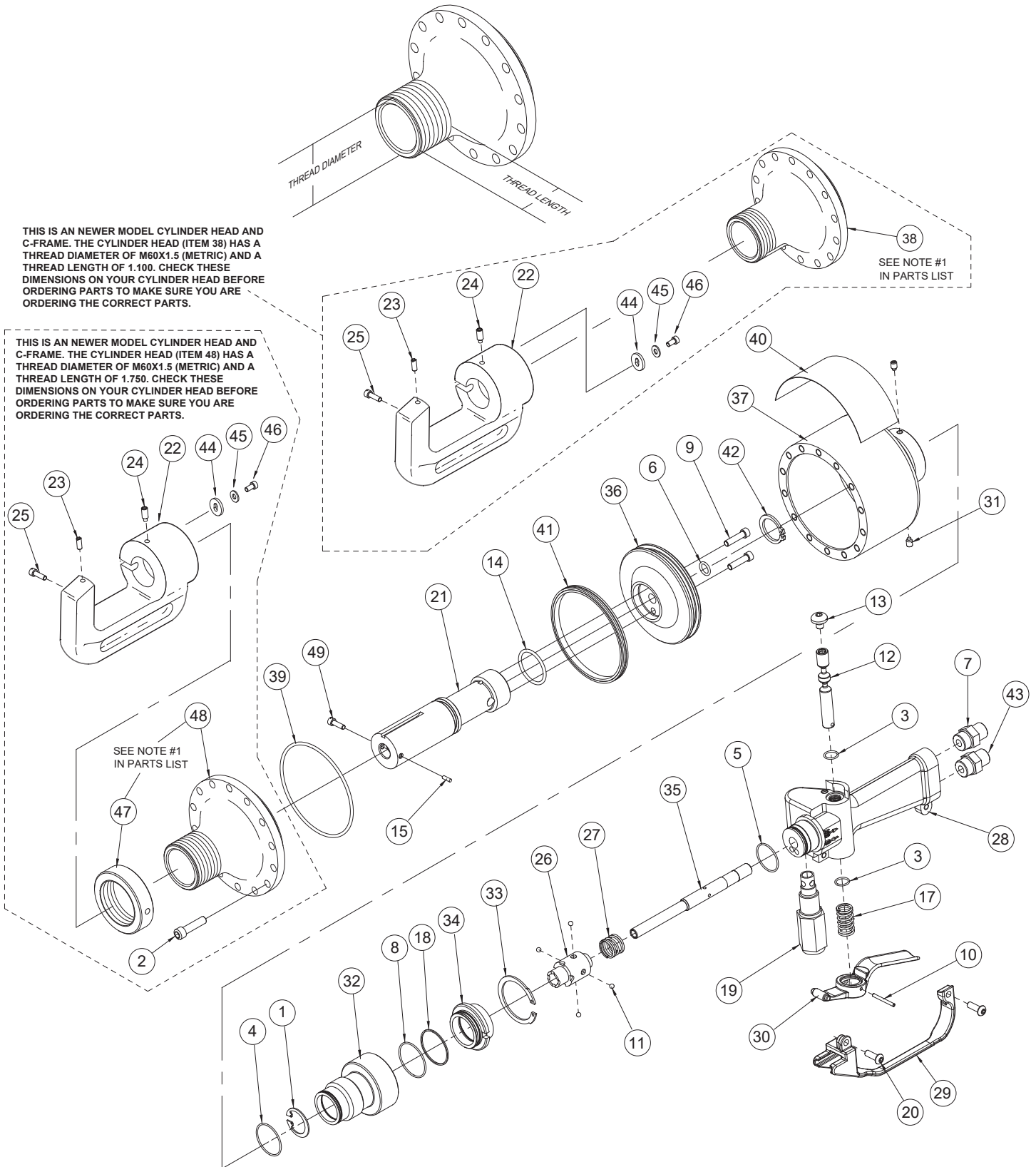
CT10016N		
CYL HEAD P/N	THREAD LENGTH	THREAD DIAMETER
67276 (ITEM 38)	1.100	M60X1.5

CT10056DH PARTS ILLUSTRATION



THIS IS AN NEWER MODEL CYLINDER HEAD AND C-FRAME. THE CYLINDER HEAD (ITEM 38) HAS A THREAD DIAMETER OF M60X1.5 (METRIC) AND A THREAD LENGTH OF 1.100. CHECK THESE DIMENSIONS ON YOUR CYLINDER HEAD BEFORE ORDERING PARTS TO MAKE SURE YOU ARE ORDERING THE CORRECT PARTS.

THIS IS AN NEWER MODEL CYLINDER HEAD AND C-FRAME. THE CYLINDER HEAD (ITEM 48) HAS A THREAD DIAMETER OF M60X1.5 (METRIC) AND A THREAD LENGTH OF 1.750. CHECK THESE DIMENSIONS ON YOUR CYLINDER HEAD BEFORE ORDERING PARTS TO MAKE SURE YOU ARE ORDERING THE CORRECT PARTS.

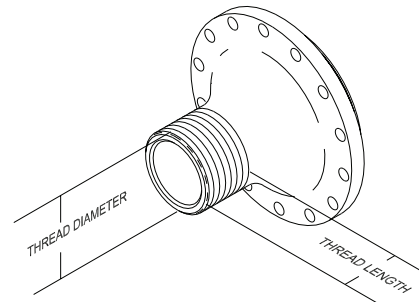


CT10056DH PARTS LIST

Item No.	Part No.	Qty	Description
1	00118	1	Retaining Ring
2	00144	14	Cap screw
3	07626	2	O-Ring
4	09330	1	O-Ring
5	00294	1	O-Ring
6	00360	1	O-Ring
7	00936	2	Adapter
8	01259	1	O-Ring
9	01521	2	Cap screw
10	01534	1	Roll Pin
11	01608	4	Steel Ball
12	01809	1	Valve Spool
13	01812	1	Valve Spool Screw
14	06332	1	O-Ring
15	08337	1	Ball Detent
17	16556	1	Spring
18	18050	1	Back-Up Ring
19	21424	1	Relief Valve
20	22147	2	Cap screw
21	24446	1	Push Rod
22	67264	1	C-Frame (Includes Items 23-25 & 46)
23	67278	1	Ball Plunger
24	68272	1	Setscrew
25	67282	1	Cap screw
26	38622	1	Valve Sleeve
27	39925	1	Compression Spring
28	39939	1	Valve Handle
29	51182	1	Trigger Guard
30	51183	1	Trigger
31	52534	2	Setscrew
32	58439	1	Adapter
33	58440	1	Retaining Ring
34	58441	1	Sleeve
35	58442	1	Oil Tube
36	58480	1	Piston
37	58481	1	Cylinder
38	67276	1	Cylinder Head (See Note 1)
39	58485	1	O-Ring
40	76652	1	Sticker

Item No.	Part No.	Qty	Description
41	58583	1	T-Seal
42	58594	1	Retaining Ring
43	67259	1	Check Valve Assy
44	06326	1	Washer
45	03014	1	Washer
46	67281	1	Cap screw
47	68318	1	Jam Nut (See Note 1)
48	68317	1	Cylinder Head (See Note 1)
49	25837	1	Slotted Mod. Cap screw
SK	58551	1	Seal Kit (Includes Items 3-6, 8, 14, 18, 39 & 41)

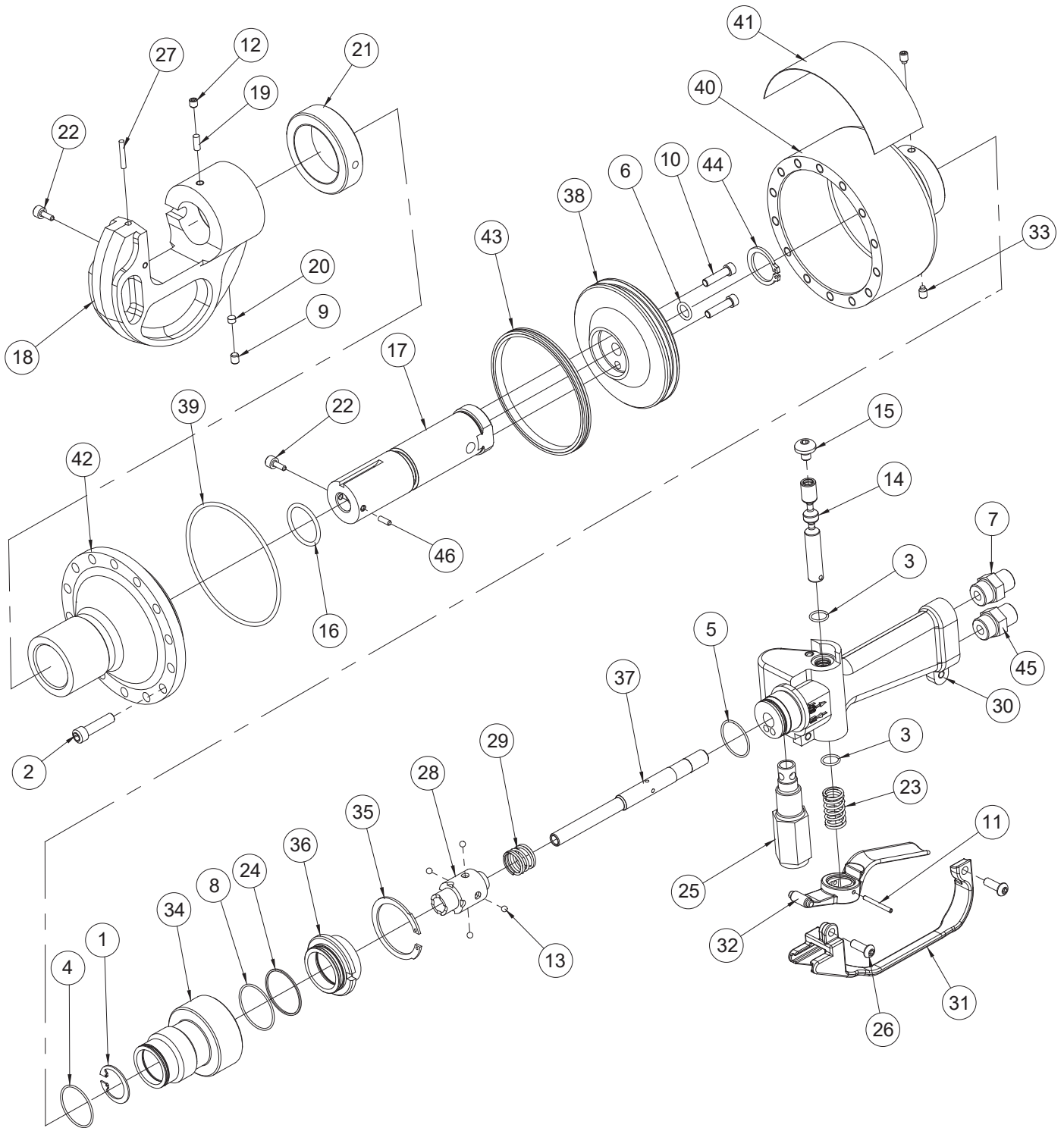
NOTE 1: Item 48 is used with a jam nut (item 47) whereas item 38 does not use a jam nut. Item 38 and 48 can be identified by measuring the length of the threads (see figure below). The length of threads for item 38 is 1.100 inches. For item 48 the length is 1.750 inches. For older models consult the factory.



To determine which model you have, measure the thread length and diameter on the cylinder head.

CYL HEAD P/N	THREAD LENGTH	THREAD DIAMETER
67276 (ITEM 38)	1.100	M60X1.5 (METRIC)
68317 (ITEM 48)	1.750	M60X1.5 (METRIC)

CT10056N PARTS ILLUSTRATION

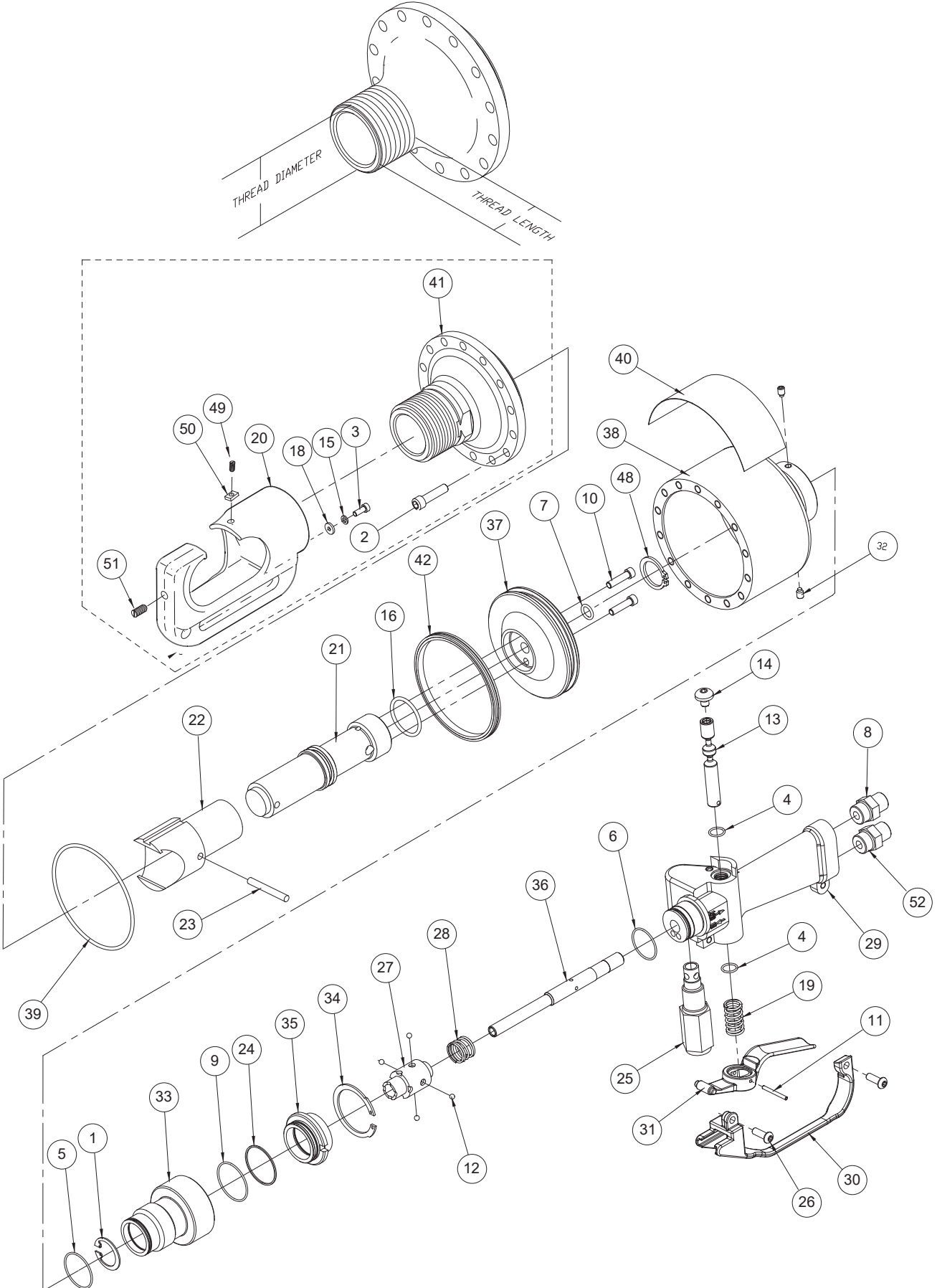


CT10056N PARTS LIST

Item No.	Part No.	Qty	Description
1	00118	1	Retaining Ring
2	00144	14	Cap screw
3	07626	2	O-Ring
4	09330	1	O-Ring
5	00294	1	O-Ring
6	00360	1	O-Ring
7	00936	2	Adapter
8	01259	1	O-Ring
9	01397	1	Setscrew
10	01521	2	Cap screw
11	01534	1	Roll Pin
12	01607	1	Setscrew
13	01608	4	Steel Ball
14	01809	1	Valve Spool
15	01812	1	Valve Spool Screw
16	04795	1	O-Ring
17	08330	1	Push Rod
18	08334	1	C-Frame
19	08335	1	Pin - Kearney
20	08336	1	Plug - Kearney
21	09906	1	Jam Nut
22	12430	2	Cap screw
23	16556	1	Spring
24	18050	1	Back-Up Ring
25	21424	1	Relief Valve
26	22147	2	Cap screw
27	34133	1	Spring Plunger
28	38622	1	Valve Sleeve
29	39925	1	Compression Spring
30	39939	1	Valve Handle
31	51182	1	Trigger Guard
32	51183	1	Trigger
33	52534	2	Setscrew
34	58439	1	Adapter
35	58440	1	Retaining Ring
36	58441	1	Sleeve
37	58442	1	Oil Tube
38	58480	1	Piston
39	58485	1	O-Ring
40	58493	1	Cylinder

Item No.	Part No.	Qty	Description
41	76652	1	Sticker
42	58513	1	Cylinder Head
43	58583	1	T-Seal
44	58594	1	Retaining Ring
45	67259	1	Check Valve Assembly*
46	08337	1	Spring Plunger
SK1	58551	1	Seal Kit (Includes Items 3-6, 8, 16, 24, 39, & 43)

CT10066AN PARTS ILLUSTRATION

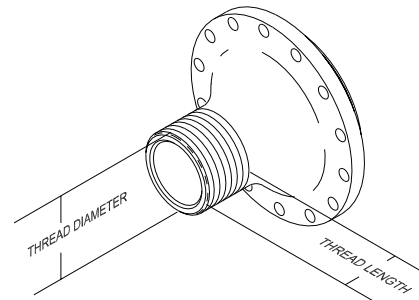


CT10066AN PARTS LIST

Item No.	Part No.	Qty	Description
1	00118	1	Retaining Ring
2	00144	14	Cap screw
3	67281	1	Cap screw
4	07626	2	O-Ring
5	09330	1	O-Ring
6	00294	1	O-Ring
7	00360	1	O-Ring
8	00936	2	Adapter
9	01259	1	O-Ring
10	01521	2	Cap screw
11	01534	1	Roll Pin
12	01608	4	Steel Ball
13	01809	1	Valve Spool
14	01812	1	Valve Spool Screw
15	03014	1	Washer
16	06332	1	O-Ring
18	06326	1	Washer
19	16556	1	Spring
20	79298	1	C-Frame (Includes Items 3, & 49-51)
21	17678	1	Push Rod
22	67248	1	Ram Assembly
23	17681	1	Spring Pin
24	18050	1	Back-Up Ring
25	21424	1	Relief Valve
26	22147	2	Cap screw
27	38622	1	Valve Sleeve
28	39925	1	Compression Spring
29	39939	1	Valve Handle
30	51182	1	Trigger Guard
31	51183	1	Trigger
32	52534	2	Setscrew
33	58439	1	Adapter
34	58440	1	Retaining Ring
35	58441	1	Sleeve
36	58442	1	Oil Tube
37	58480	1	Piston
38	58481	1	Cylinder
39	58485	1	O-Ring
40	76652	1	Sticker

Item No.	Part No.	Qty	Description
41	67276	1	Cylinder Head
42	58583	1	T-Seal
48	58594	1	Retaining Ring
49	67279	1	Setscrew
50	67280	1	Key
51	67277	1	Setscrew
52	67259	1	Check Valve Assembly
SK1	58551	1	Seal Kit (Includes Items 4-7, 9, 16, 24, 39 & 42)

If you have an older CT10066AN, Before ordering parts for the cylinder head or C-frame parts, contact a STANLEY Infrastructure customer service representative to ensure the correct parts are being ordered. Older models could have different size cylinder head and C-frame.



To determine which model you have, measure the thread length and diameter on the cylinder head.

CT10066AN		
CYL HEAD P/N	THREAD LENGTH	THREAD DIAMETER
67276 (ITEM 41)	1.100	M60X1.5