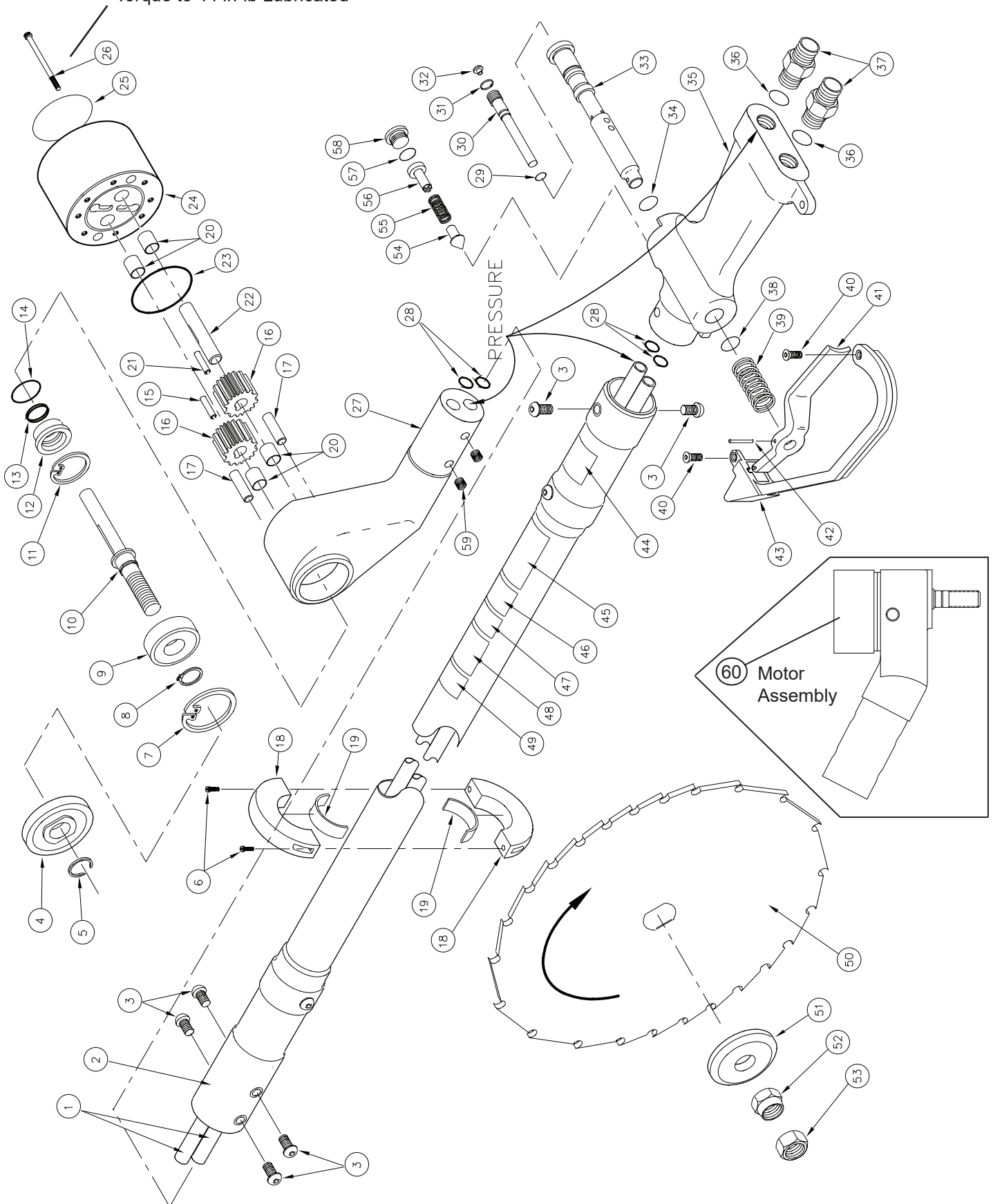


CR27 PARTS ILLUSTRATION

Torque to 44 in-lb Lubricated



CR27 PARTS LIST

ITEM	PART NO.	QTY	DESCRIPTION
1	00042	2	OIL TUBE ASSY
2	29519	1	OUTER TUBE ASSY
3	18089	6	CAPSCREW, BUTTONHEAD, 1/4-20 × 3/8
4	00227	1	FIXED COLLAR
5	00103	1	RETAINING RING
6	07407	2	CAPSCREW, HEX SOCKET HEAD, 10-32 × 3/4
7	00118	1	RETAINING RING
8	00008	1	RETAINING RING
9	00007	1	BALL BEARING
10	24842	1	MOTOR SHAFT
11	04856	1	RETAINING RING
12	19215	1	SEAL LINER *
13	00173	1	QUAD RING *
14	60804	1	O-RING *
15	03227	1	NEEDLE ROLLER
16	04106	2	DRIVE GEAR
17	00289	2	DOWEL PIN
18	07305	2	HAND GUARD
19	11458	2	LINER
20	04041	4	DU BUSHING
21	04044	1	NEEDLE ROLLER
22	07612	1	IDLER SHAFT
23	00020	1	O-RING*
24	07652	1	GEAR HOUSING ASSY (INCL ITEMS 17, 20 & 24)
25	24827	1	NAME TAG
26	00753	8	CAPSCREW, HEX SOCKET HEAD, 10-24 × 1-1/4
27	44887	1	FRONT BEARING HOUSING (INCLUDES 2 OF ITEM 20, HELICOILS & O-RINGS ITEM 28).
28	16668	4	O-RING, 7/16 × 9/16 × 1/16 -017*
29	00026	1	O-RING, 3/16 × 5/16 × 1/16 -008*
30	19875	1	SELECTOR SCREW
31	16070	1	RETAINING RING
32	22807	1	PLUG (FURNISHED IN 26414 LOCK-OUT KIT)
33	31633	1	VALVE SPOOL (CR27891 ONLY)
	67128	1	VALVE SPOOL (MODEL CR27191P ONLY)
34	07626	1	O-RING, 1/2 × 5/8 × 1/16*
35	31630	1	VALVE HANDLE
36	01605	2	O-RING (INCL W/ ITEM 37)
37	00936	2	ADAPTER

ITEM	PART NO.	QTY	DESCRIPTION
38	07627	1	O-RING, 5/8 × 3/4 × 1/16*
39	65151	1	SPRING
40	22147	2	CAPSCREW, HEX SOC FLAT HD, 1/4-20 × 3/4
41	51183	1	TRIGGER
42	01534	1	ROLL PIN
43	51182	1	TRIGGER GUARD
44	12412	1	ELECTRICAL WARNING STICKER
45	27694	1	DANGER STICKER
46	03784	1	5-7 GPM STICKER
47	05153	1	STANLEY STICKER
48	15863	1	WARNING STICKER
49	N/A	1	DIELECTRIC TEST STICKER
50	34356	1	SAW BLADE
51	00125	1	MOVEABLE COLLAR
52	24853	1	COLLET NUT
53	24850	1	LOCKING NUT
54	31186	1	POPPET
55	34303	1	SPRING
56	34257	1	POPPET STOP
57	03364	1	O-RING*
58	03709	1	PLUG
59	24837	4	HELICOIL
60	31700	1	MOTOR ASSEMBLY - (INCL ITEMS 7 THRU 17, & 20 THRU 28)
AC	03972	1	FEMALE COUPLER
AC	03973	1	MALE COUPLER
AC	03971	1	COUPLER SET
SK	29829	1	SEAL KIT

* DENOTES PART IN SEAL KIT