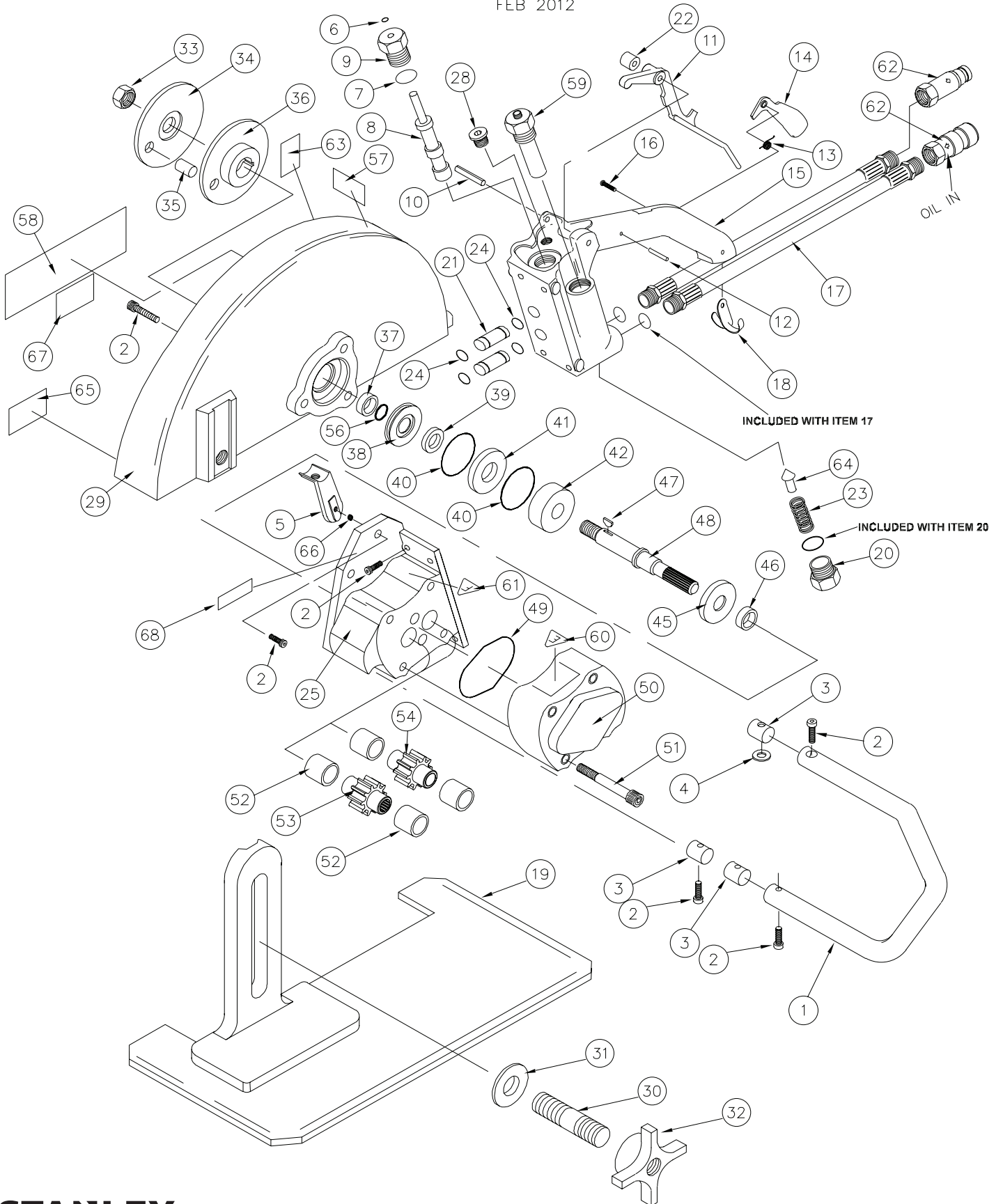


CO23 PARTS ILLUSTRATION

CO23 CUT-OFF SAW

FEB 2012



CO23 PARTS LIST

ITEM NO.	P/N	QTY.	DESCRIPTION
1	70980	1	HANDLE BAR
2	02764	11	CAPSCREW, 5/16-18 x 3/4 HEX SOC HD
3	02649	3	HANDLE BAR RETAINER
4	02643	1	NEOPRENE WASHER
5	20461	1	HANDLE STRUT
6	00112	1	QUAD-RING *
7	01604	1	O-RING, .097 x .755 (90 DURO) *
8	32026	1	VALVE SPOOL
9	02931	1	ON-OFF VALVE CAP
10	31804	1	ROLL PIN, 1/4 x 2 1/2
11	22707	1	TRIGGER
12	74841	1	ROLL PIN, 3/16 x 1 1/4
13	22701	1	TORSION SPRING
14	22704	1	SAFETY CATCH
15	28552	1	VALVE HANDLE ASSEMBLY (PURCHASE WITH P/N 74841)
16	00787	1	CAPSCREW, 1/4-20 x 1-1/4 FL HD
17	06830	2	HOSE ASSEMBLY
18	02911	1	HOSE CLIP
19	03806	1	SOLE PLATE ASSEMBLY
20	31137	1	PORT PLUG
21	00174	2	OIL TUBE
22	02920	1	SPACER
23	02916	1	SPRING
24	00175	4	O-RING, 1/2 x 5/8 x 1/6 *
25	35286	1	MOTOR HOUSING CCW
26	-----	1	NO ITEM
27	-----	1	NO ITEM
28	08104	1	PLUG SAE O-RING
29	04046	1	GRINDING WHEEL GUARD ASSEMBLY
30	03821	1	STUD
31	03827	1	WASHER, 1/2
32	03819	1	KNOB
33	01714	1	HEX NUT, 5/8-11 CCW
34	03802	1	OUTER FLANGE
35	03969	1	SPIROL PIN
36	03803	1	DRIVE FLANGE 1 IN.
37	03810	1	SEAL RACE
38	03811	1	SEAL CARRIER
39	03823	1	SEAL *
40	01262	2	O-RING, 1 3/4 x 1 7/8 x 1/16 *
41	03822	1	SEAL CARRIER WASHER
42	03109	1	BEARING

ITEM NO.	P/N	QTY.	DESCRIPTION
43	-----	--	NO ITEM
44	-----	--	NO ITEM
45	03812	1	SPACER WASHER
46	03824	1	SEAL *
47	00600	1	KEY
48	03813	1	MOTOR SHAFT CCW
49	00253	1	O-RING, 2 1/2 x 2 5/8 x 1/16 *
50	35285	1	MOTOR HOUSING CAP
51	01217	4	CAPSCREW, 3/8-16 x 2 1/2 HEX SOC HD
52	03826	4	BEARING (INCL WITH ITEM # 50 & 25)
53	03818	1	GEAR
54	04033	1	IDLER GEAR
55	00713	2	DOWEL PIN, 1/4 x 1
56	01211	1	O-RING, 5/8 x 3/4 x 1/16 *
57	74824	1	CO23 STICKER
58	74832	1	STANLEY LOGO DECAL
59	72879	1	FLOW CONTROL
60	12535	1	EHTMA "E" DECAL
61	12536	1	EHTMA "F" DECAL
62	03974	1	COUPLER SET (MALE & FEMALE) FOR INDIVIDUAL COUPLERS (P/N-03975 FEMALE / 03976 MALE)
63	88347	1	MANUAL STICKER
64	31186	1	POPPET
65	72881	1	WHEEL WARNING STICKER
66	01420	1	HELICOIL
67	72893	1	ROTATION DIRECTION STICKER
68	88345	1	IMPORTER STICKER

Note: Use Part Name and Part Number when ordering.

* Denotes Part in Seal Kit.

SEAL KIT DATA

P/N	QTY.	DESCRIPTION
SEAL KIT PART NO. 04120		
00175	4	O-RING
00253	1	O-RING
00112	1	QUAD-RING
01211	1	O-RING
01262	2	O-RING
01362	1	O-RING
01604	2	O-RING
03823	1	SEAL
03824	1	SEAL
01605	2	O-RING