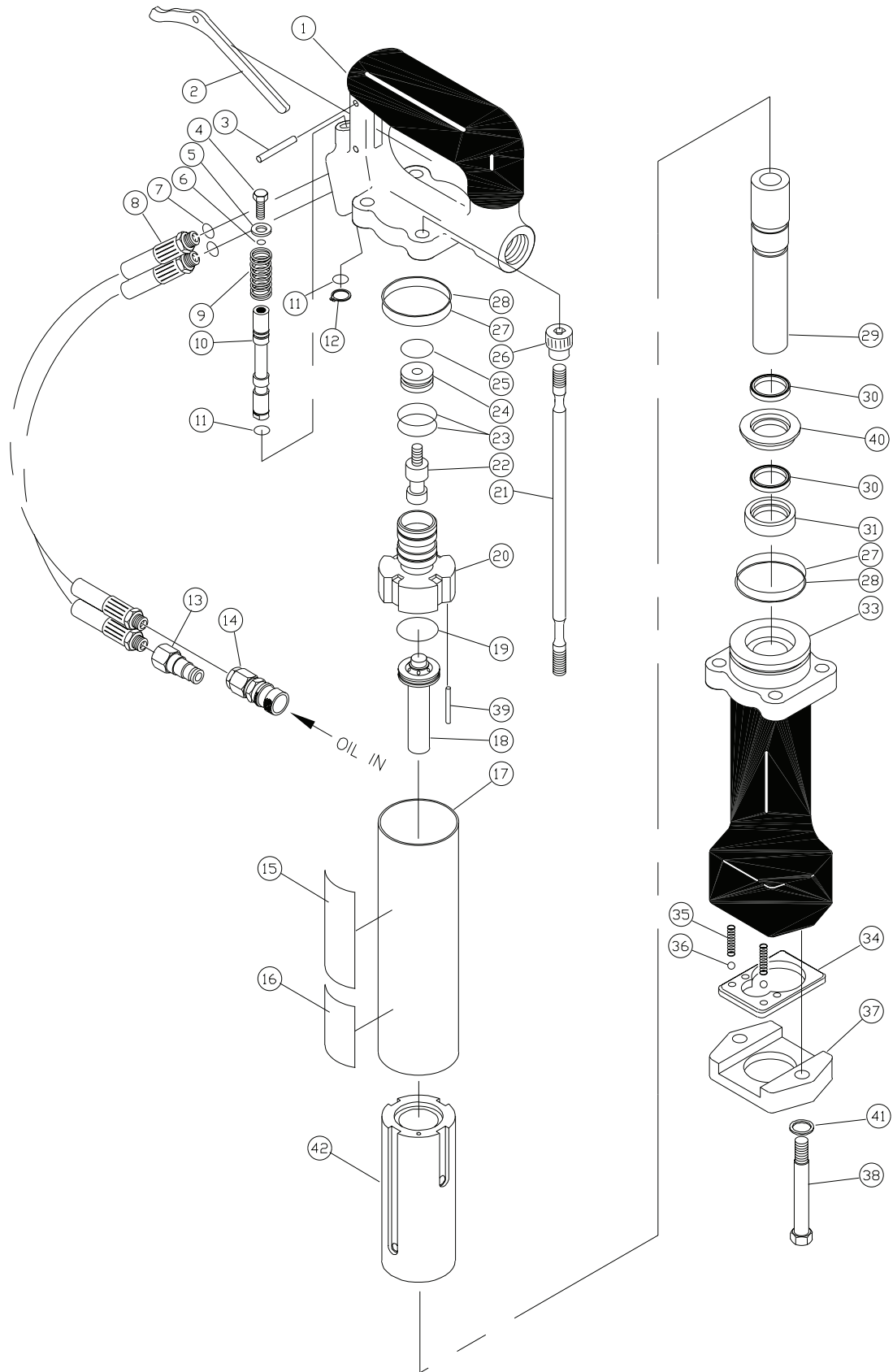


CH18 PARTS ILLUSTRATION



CH18 PARTS LIST

ITEM NO.	PART NO.	QTY	DESCRIPTION
1	02890	1	HANDLE BODY ASSY (INCL ITEMS 11, 27, 28)
2	02853	1	TRIGGER
3	24316	1	DOWEL PIN
4	02959	1	SPOOL SCREW
5	24348	1	WASHER
6	02901	1	O-RING
7	03252	2	O-RING
8	01412	2	HOSE ASSY
9	02846	1	SPRING
10	02881	1	ON/OFF SPOOL – OPEN CENTER
11	03252	2	O-RING
12	00752	1	RETAINING RING
13	03973	1	MALE COUPLER BODY
14	03972	1	FEMALE COUPLER BODY
15	28852	1	NAME TAG
16	03786	1	GPM STICKER
17	71475	1	OUTER TUBE (IF PURCHASING OUTER TUBE YOU MUST ORDER P/N-71475 WHICH INCLUDES OUTER TUBE & ITEM 42 FLOW SLEEVE)
18	03958	1	OIL TUBE
19	01259	1	O-RING
20	03253	1	VALVE BODY
21	02848	4	BOLT ASSY (INCL ITEM 26)
22	02880	1	REVERSING SPOOL
23	00211	2	O-RING
24	03254	1	VALVE GLAND
25	01772	1	O-RING
26	02454	4	ALLEN NUT (FURNISHED WITH ITEM 21)
27	02177	2	O-RING
28	02865	2	BACK-UP RING
29	03959	1	PISTON
30	02907	2	ROD SEAL
31	04175	1	INSERT
32	—	—	NO ITEM
33	04015	1	RETAINER NOSE (LAND MODEL) INCLUDES ITEMS 30, 31, 33 THRU 38, 40 AND 41.

ITEM NO.	PART NO.	QTY	DESCRIPTION
	04014	1	RETAINER NOSE (UNDERWATER) INCLUDES ITEMS 30, 31, 33 THRU 38, 40 AND 41.
34	04012	1	RETAINER
35	03190	2	SPRING
36	02436	2	BALL
37	04010	1	RETAINER CAP
38	02665	2	CAPSCREW
39	02843	1	PIN
40	07049	1	INSERT
41	03031	2	LOCKWASHER
42	71475	1	FLOW SLEEVE ASSY, (NOTE: THIS ITEM INCLUDES ITEM 17 OUTER TUBE)

SEAL KIT PART NUMBER 03331 CH18-DR19 LAND		
PART NO.	QTY	DESCRIPTION
02901	1	O-RING
03252	2	O-RING
02865	2	BACK-UP RING
02177	2	O-RING
03127	1	ROD WIPER
02302	1	ROD SEAL
01259	1	O-RING
01772	1	O-RING
00211	2	O-RING
02907	2	ROD SEAL

SEAL KIT PART NUMBER 03843 U/W		
PART NO.	QTY	DESCRIPTION
03351	1	O-RING
03364	1	O-RING
02901	1	O-RING
03252	2	O-RING
02865	2	BACK-UP RING
02177	2	O-RING
03127	1	ROD WIPER
02302	1	ROD SEAL
01259	1	O-RING
01772	1	O-RING
00211	2	O-RING
02907	2	ROD SEAL