

F400 Electronic Rising Platemeter

USER MANUAL



Proudly
manufactured
in New Zealand.

Circuit components
sourced offshore.







F400 ELECTRONIC PLATE METER USER MANUAL

Dear Plate Meter Purchaser

RE: YOUR P-PLUS PASTURE COVERS SOFTWARE AND PLATE METER MANUAL

Please find enclosed the following:

- Your copy of the **P-Plus** Software, licenced for Pasture Covers
- Your Ag Hub Electronic Plate Meter Manual
- P-Plus with Pasture Cover Module Installation Guide
- Pasture Covers User Guide
- Frequently Asked Questions
- Demonstration of Full version of P-Plus Farm Management

We suggest that you keep your manual with the Plate Meter at all times as it has valuable information on how to recalibrate and trouble shoot any issues with your Plate Meter. From time to time Plate Meters need to be recalibrated and the battery charged. Full explanations on how to do this are covered in the Manual.

We suggest that you follow the **P-Plus with Pasture Cover Module Installation Guide** to get the program running and encourage you to promptly send back your licence details. Remember **P-Plus with the Pasture Cover module** is free with the purchase of any Ag Hub Electronic Counter, Electronic Rising Plate Meter or Feed Reader. Although **P-Plus** has been tested on a number of Windows® platforms and computers there is always the possibility of a conflict with other programs or hardware.

Please call Ag Hub on 0800 MYAGHUB (0800 692 448) if you experience any problems with the installation of the **P-Plus** software.

The CD enclosed includes the full **P-Plus** program, although it will only be licensed to run the Pasture Cover module. You will be able to view the Demonstration farm data for the other modules at any time by selecting the demonstration farm. Full version prices are available in the Frequently Asked Questions. Prices start at \$400 + GST.

If you have any concerns about your farm data then please make sure you attach a copy of your most recent **P-Plus** backup to the email being sent to Ag Hub. This can be achieved automatically from within **P-Plus** simply by selecting Email Support from the Help menu.

For further reading, see the **Frequently Asked Questions** printed further on in this manual.

F400 Electronic Rising Plate Meter User Manual

The F400 Electronic Rising Plate Meter provides farmers with a reliable and accurate method of measuring pasture within a given range. It provides a valuable tool for maintaining consistency in the measurement of pasture when undertaken by more than one person, providing a benchmark to reduce variations in visual assessments.

It has been widely used in the dairy industry for a number of years and more recently in sheep, beef and deer enterprises. The Ag Hub Plate Meter is sold in a number of countries including Australia, Chile, Argentina, Uruguay, Mexico, USA, Canada, United Kingdom and South Africa.

In New Zealand both farmers and consultants use it to provide pasture height and density for determining feeding regimes for given classes of stock. A companion product is the **P-Plus** software program with the **Pasture Cover Module**, which provides a useful tool for recording and reporting pasture covers obtained by the Plate Meter.

1	How to install P-Plus Pasture Cover	4
2	How to Run P-Plus with the Pasture Cover Module	6
3	How to Licence P-Plus Software...	7
4	Pasture Covers User Guide	13
5	USB Drivers	25
6	Assembling the Rising Plate Meter	30
7	Component Parts	31
8	Retrofitting an Electronic Counter to a Manual Plate Meter	32
9	Caring for Your Plate Meter	33
10	The Battery	33
11	Servicing and Repairs	34
12	Operating the Electronic Counter	35
13	Current New Zealand Dairy Equations	40
14	Uploading Data and Equations to the F400	42
15	Using the Correct Measuring Technique	44
16	Taking Paddock Readings (The Pasture Walk)	45
17	Downloading from the F400 to P-Plus	47
18	Pasture Cover Reports	48
19	Updating the F400 Software Version	49
20	Trouble Shooting	50
	Other Products Sold by Ag Hub	57
	Frequently Asked Questions	58

P-Plus – Pasture Cover Module Installation Guide

System Requirements

NOTE: P-Plus with the Pasture Covers module will run on a Computer/laptop running Windows 98, Windows ME, Windows XP Home/Professional and Vista.

Before you start the installation of the P-Plus with the Pasture Covers module we recommend you to save all current work and exit out of any other windows applications.

If P-Plus is already installed then start your existing version of P-Plus and perform a full P-Plus backup to your hard disk or USB memory stick. This installation will upgrade all versions newer than 1.90, simply continue to follow the instructions below.

- If your version of P-Plus is older than 1.09 or Farm tracker then call AG HUB to discuss your upgrade options.
- If you have version 3.21 installed then you do not need to do anything as the latest software is already installed. You may still need to apply for another licence if you have purchased Feed Budget separately. To apply for a new licence start P-Plus and select "Help" then select "Enter Licence details". See section 3 of this document for more details.

Please call Ag Hub on 0800 MYAGHUB (0800 692 448) if you experience any problems with the installation of the **P-Plus** software.

Setting the Date Format and Country

In order to enter dates in the correct format for you, make sure the international set-up is set to your country.

1. Click on 
2. Click on **Settings** and then click on **Control Panel**.
3. Double click on the **Regional Settings** or **Regional and Language Options** (Windows XP) icon.
4. The Country field should show your country (e.g., New Zealand is shown as **English (New Zealand)**). If not then select your country from the **Country** drop down list. Please ensure the country settings use a full stop (.) as the decimal separator in the number and currency fields. To change click on **Customize**, and on the **Numbers** tab, change the decimal symbol to a full stop.
5. Click on the **Date** tab (in XP click on the **Customise** button first) to check the short date is in the correct format. For example, in New Zealand the format should be **dd/mm/yyyy**. The date separator should be a slash (/). Make sure there are four 'y' in the date format.
6. On the Numbers tab, ensure the Decimal Symbol is set to a .
7. Click on **OK**.

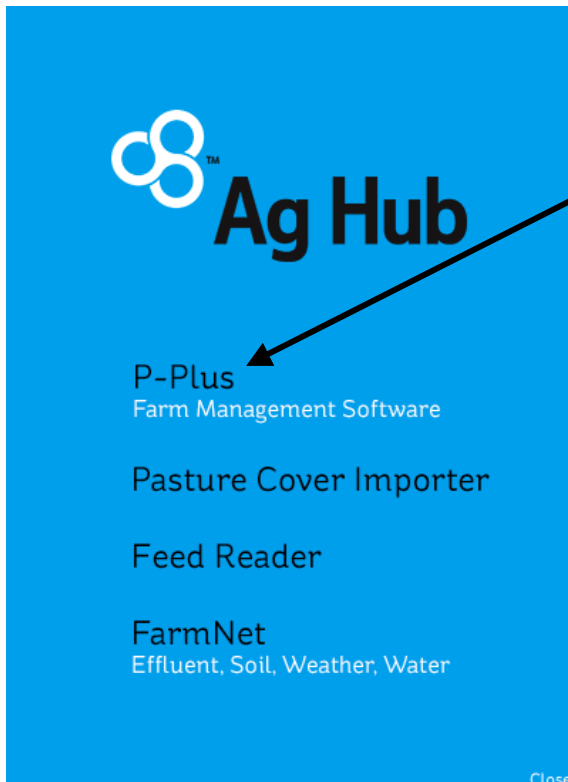
Note: There is an issue with short date formats in Windows 7. Basically dates will show in US order (m/d/y) even if regional settings and short date format is set correctly in Control Panel. You need to change the language settings to English (Australia) for example, Apply, change it back to English (New Zealand) and Apply again. The problem and solution can be found here <http://social.technet.microsoft.com/Forums/en/w7itprogeneral/thread/b4f90f07-206c-494b-8d14-ee17bfa689e0>

1. How to install P-Plus Pasture Cover

P-Plus needs to be installed before you can use the F400, as information from your farm in P-Plus needs to be downloaded to your F400.

Take the CD and place it in the CD drive.

It should automatically boot and the screen below will appear.



Please ensure you select the **P-Plus Farm Management Software** Option

Once you click on '**P-Plus Farm Management Software**' the installation will start automatically.

Simply follow the prompts until the installation is complete.

Once the installation process is complete your desktop image will appear and you will note a P-Plus icon on your desktop.



1.1. Moving P-Plus and your farm data to a new computer

On the old computer

1. You will need a floppy drive or external USB memory stick to put the backup on.
2. Backup your farm data; go to Help and Backup for details on how to do this.
3. Browse to your USB memory stick so it becomes your selected backup location.
4. Backup your farm data.


On the New computer

1. Install P-Plus and request a new licence. State it is a replacement computer.
2. Make a new farm with the same name as the old computer.
3. Select Farm and Restore, Use the TOP browse only and browse to the USB Memory stick.
4. Find the backup file.
5. Select the backup file and then select OK in Restore.
6. This will put your farm data into P-Plus.
7. Check the data is ok.

Wait for new licence to arrive to licence your copy of P-Plus.

2. How to Run P-Plus with the Pasture Cover Module

Once the installation is complete, go to your desktop and double click on your **P-Plus** Icon to start the program.

Alternatively from the windows task bar click on  select **All Programs**, then from the **P-Plus** Program Group, select **P-Plus**.

On opening P-Plus the window in figure 3 will appear. This is simply a warning window advising the number of days left in the trial licence to evaluate your P-Plus software.

This screen will disappear when you have registered P-Plus correctly.

Please click on **OK** to close the screen.

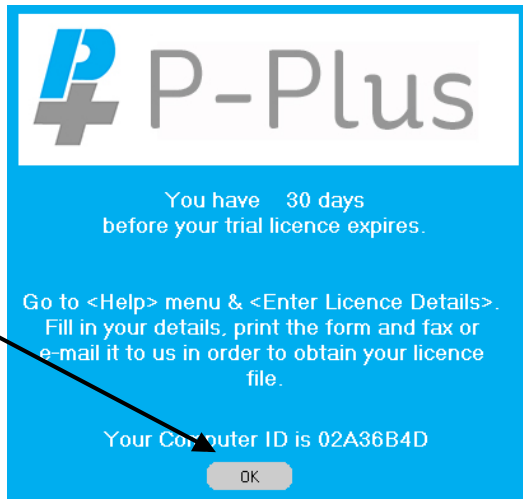


Figure 3- P-Plus 30 Day Trial Licence Expiry Warning

If you are upgrading from a licenced copy of P-Plus newer than 1.87, then the screen above may not appear.

3. How to Licence P-Plus Software

This screen will automatically appear after ok button is pressed on the 30-day trial period screen. If it does not appear or you want it to reappear then from within P-Plus select **Help** and **Enter Licence Details**. Remember you must request a licence otherwise the software will prevent you from accessing your farm data in 30 days time. Also P-Plus will not allow you to print the reports until your software is licenced.

Pasture Cover Module Licences are free to purchasers with an Electronic Plate Meter or a Rapid Pasture Sensor.

Please ensure that you check the box for Pasture Cover only, **DO NOT CHECK ANY OTHER BOXES.**

Licence Details for Version 3.35

P-Plus Identification Details

Licence Name
(Business name, farm name or your name)

CD Serial Number CD Check Key

Serial Number and Key do not match

Computer ID

Purchased From

Purchase Date

Selections

Select one of the following

Single Farm (Farm Version)

Multiple Farms (Professional)
Number of 5 farm blocks

New Module Purchases
(contact Distributor for pricing)

PastureCover
(Record Results and view Feed Wedge)

Map
(Map drawing, measuring and viewing)

Paddock
(Basic paddock and crop records)

Feed Forecaster - Budget
Calculate animal feed demand and supply

Your Details

Initials/Surname

Address

Suburb or RD no.

Town or City

PostCode

Phone

Fax

Email

First Names

Computer Details (Optional)

Make

Processor

Printer

Windows Version

Preference for Licence File

EMail Fax

3.1. Entering your Details

Please follow the instructions carefully when entering details on your Licence Application.

P-Plus Identification Details

Information in this section is used to create your unique licence.

Licence Name

This is the name of the owner/purchaser of the software licence. Enter your surname followed by initials. If entering a Farm Name or company then use this first
For example:

Bambie, D.

Or Bambie Partnership;

Or Deer Enterprise Ltd

Make sure that this name is correct, as you can only change the name by ringing your distributor, and having another licence code reassigned.

CD Serial Number

This is the serial number on the CD.

CD Check Key

This is the Check Key on the CD sticker

Computer ID

This is the unique ID of your computer, and should be automatically filled in for you.

Purchased From

Enter the name of your dealer.

Purchase Date

Enter the date you purchased the program, or if you are unsure then use today's date. This is a required entry and cannot be left blank. Enter the date in the format dd/mm/yyyy or click the button to select a date. If this is unknown, choose the closest date.

Your Details

These details are used to contact you and send you your licence.

Initials/Surname

This should be the name or names of persons responsible for the program (i.e. the owner/s). Usually, it is the name of the owner or farm manager.

Address

Enter your full postal address.

Phone/Fax

Enter your phone number in the format:

06 123 4567 or 027 123 4567

Email

Licensing is usually done by email. If you do not supply an email address we will need to send you a disk to complete the Licensing process.

First Name

This is used to personalise letters to clients. We would appreciate knowing your first name so that we can direct contact to you personally.

Preference for Licence File

You can specify to receive your licence file via Email, or Fax.

Selections

You can choose to licence for the Farm version (one farm only), or Professional version (more than one farm). If you select Professional, you will need to specify how many blocks of 5 farms you wish to licence. For example, if you have 1 to 5 farms enter 1, or if you have 6 to 10 farms enter 2. There is an additional charge for Professional.

New Module Purchases

This is a list of the various modules, which are available within **P-Plus**. Indicate the modules that you would like to licence by clicking with your mouse on the appropriate check boxes. It is important you select only the modules you wish to purchase. Please ensure that you check the box for Pasture Cover only if that is the only module you wish to use.

Note: There is a document located on the **Help** menu, called **View Feature List**, which outlines all the features included with each module. Pricing for additional modules is available in the Frequently Asked Questions section.

Computer Details - Optional

Optional information that may help identify any possible issues.

Make & Model - Optional

If you know the brand and make of your computer, please enter it here. It usually appears somewhere on the front of the computer "box".

Processor (Type) - Optional

Only enter this if you know

Printer

Some printers react differently with different programs. The make and model assists identifying printer issues.

Windows Version - Optional

Enter your Windows version (98 through to Vista).

When you have completed the licence details, you can select to either email them directly to Ag Hub or print them off for faxing or posting.

Email Button

Press the Email button, and confirm if you are connected to the Internet. Your email program should appear with the address completed and your licence file request attached. Press Send from your email program to complete your licensing request.

Close Button

Once you have emailed or printed the licence document select Close. **P-Plus** will then prompt you to enter your farm name.

3.2. Entering Your Licence Key

A P-Plus Licence file will be sent to you once the Licence Details have been received and processed by Ag Hub. Issuing of the Licence file is subject to you complying with the licensing agreement, which is attached to the licence email. Allow five working days for your licence file (**PP.txt**) to arrive by email.

For further assistance, you can refer to the Pasture Cover Manual section 4, which is available from within P-Plus main screen under the PDF Manuals menu.

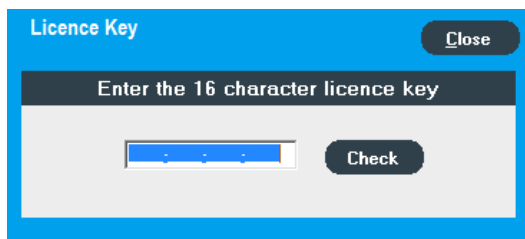
Please note that you can only create one farm if you are only licenced for a single farm (Farm version). If you have more than one farm, please call Ag Hub for a price for the P-Plus with Pasture Cover module for multiple farms (Professional version).

When you receive the licence file by email with an attachment called **PP.txt**, please follow these steps:

1. Open this email from Ag Hub and detach (save attachments) the **PP.txt** into the C:\PPlus directory (browse to my computer, then select c drive, then select the **P-Plus** directory, ensure save to location is C:\PPlus)
2. Overwrite the existing **PP.txt** file
3. Start P-Plus from the ICON on your Desktop
4. P-Plus should now be licenced and it should not bring up the 30-day trial licence.
5. Remember to make a new Farm, do not add or edit the demonstration data. Only data entered into your own farm database is saved.
6. If the trial licence still exists, repeat from step 1.

Alternatively you can open the **PP.txt** attachment in your email and copy the 16-character code from the [Special Codes] section, and paste it into the **Enter Licence Key** form found under the **Help** Menu at the top of the screen.

Press the **Check** button to complete the registration process.



If an Invalid code message is displayed below the Licence Key, please check the licence key you have entered is correct; otherwise contact Ag Hub Technical Support for further assistance.

3.3. Re- Licensing

P-Plus may need to be re-licensed on a replacement computer or in the event of significant changes being made to your computer. In either case **P-Plus** may become un-licensed.

This will require the generation and issue of a new licence file. In this case contact AG HUB or print out the licence from the new or modified computer and forward this accordingly. On the receipt of this request for a new licence file this will be emailed back to you where possible. A small charge (\$25) will be made to cover costs associated with this to ensure all user details can be maintained to allow support and upgrade conditions to be continued.

3.4. Solutions to Licensing Issues

The 30-day trial period screen will not go away, but I have received my licence from Ag Hub.

There is often more than one problem. Firstly you may not be saving the **PP.txt** to the C:\PPlus directory. Often users are saving it to their **My Documents** directory or the **Desktop**. You will need to ensure that you press the browse button and then use the scroll bar to select the **P-Plus** folder on your Local Disk (usually Drive C).

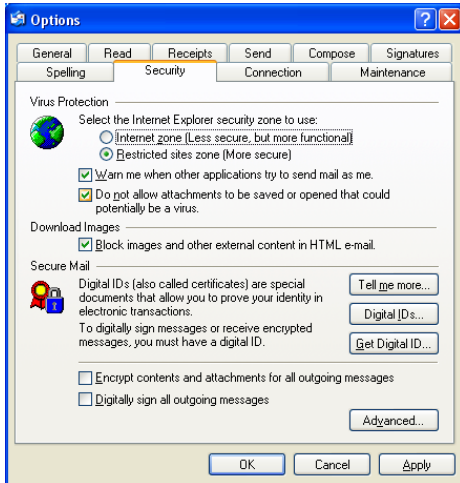
When saving the file to disk, ensure that it pops up the question **"Do you want to overwrite the existing file?"** By over writing the file you will overwrite the trial licence.

If the file is going into the **P-Plus** folder and the problem still exists and you have upgraded from an earlier version of P-Plus or P-Plus Pasture Covers, then the possible cause is that you could be starting P-Plus with the Pasture Cover module from the wrong Icon on your desktop e.g. the old P-Plus Pasture Cover icon, instead of the correct Icon, which is now the **P-Plus** Icon.

The easy way to check is to look at the ICON on the desktop; if it says **P-Plus** then this will be your problem. Delete the P-Plus Pasture Cover icon from your desktop and Reinstall P-Plus from the CDROM again.

If this still is a problem then reapply for a new licence. Note that your computer ID will change if you have a portable hard disk drive plugged into your computer.

We suggest you unplug it and try to start P-Plus, this may resolve your problem. If not then restart your computer with the portable hard disk unplugged and try again.

Unable to detach the licence from Outlook Express?


1. Outlook is preventing the file from been saved, by default Microsoft Outlook express will not allow attachments to be saved.
2. To enable this function open MS Outlook Express and select Tools, then Options, then click on the security tab.
3. Un-tick the box. **Do not allow attachments to be saved or opened that could potentially be a virus.**
4. Close MS Outlook and reopen.
5. Then follow the instructions that came with the licence file to detach the licence file.

P-Plus software becomes un-licenced when it was licenced before

This tends to occur when an external USB hard disk drive is connected which then changes your computer ID and causes the P-Plus software to expire. The problem can be overcome by removing the extra hard disk drive, then restarting the P-Plus program. If you are going to keep the external drive plugged in all the time then you will need to apply for a new licence file. Please contact AG HUB for this.

4. Pasture Covers User Guide

The Pasture Cover module records pasture covers for the farm and will provide information on the individual paddock pasture covers, feed availability and the feed wedge and in time pasture growth rates. This module can be installed separately or in conjunction with the full P-Plus program. The Pasture Cover module is a companion to the Ag Hub Plate Meter and Rapid Pasture Meter although it is also useful to compliment other pasture measuring devices.

This Section consists of the following components:

- The Pasture Cover Setup Screen
- The Pasture Cover Main Screen
- The Add/Edit Screen
- The Target Covers Window
- Entering First Pasture Cover
- Pasture Cover Reports
- Pasture Cover Importer

The Pasture Cover module is free to the purchaser of an Ag Hub Plate Meter. If you have purchased extra modules you do not need to install the Pasture Cover module, as it is free with any other module purchase. Simply install P-Plus as per the instructions that came with the CDROM.

For installation instructions for P-Plus, refer to the P-Plus Installation Guide that came with the CDROM or Plate Meter or Rapid Pasture Meter.

4.1. Pasture Cover Setup

When you have installed P-Plus and sent the licence request for the Pasture Cover module to Ag Hub, you can then setup your farm.

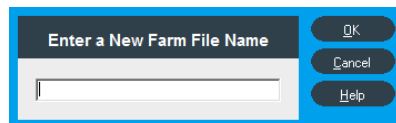
Installation and licencing is covered in the P-Plus with Pasture Cover Module installation guide that came with the CDROM.

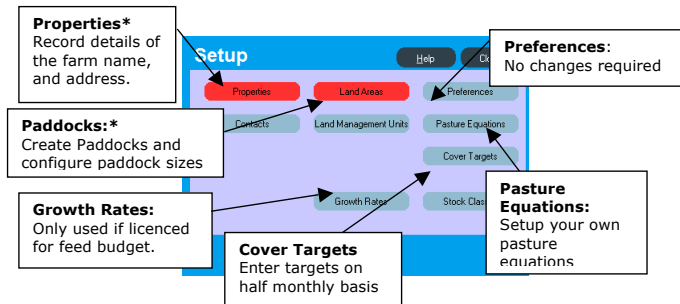
Once you have filled in the licence information you are ready to set up your farm. Note if licence form is showing then select Close.

Firstly to create your new Farm, click on the Farm menu and select Create New Farm.

The 'Enter a Farm File Name' prompt will appear. Note if P-Plus says farm licence already reached, then go to the Farm menu and then click on "Select Farm". There should be two farms in the list, one being the Demonstration Farm and the other your own Farm. Click on your farm and click select.

Please enter your farm name and click on 'OK'. This will bring up the 'Pasture Covers Setup' screen.





The Pasture Covers Setup screen allows you to:

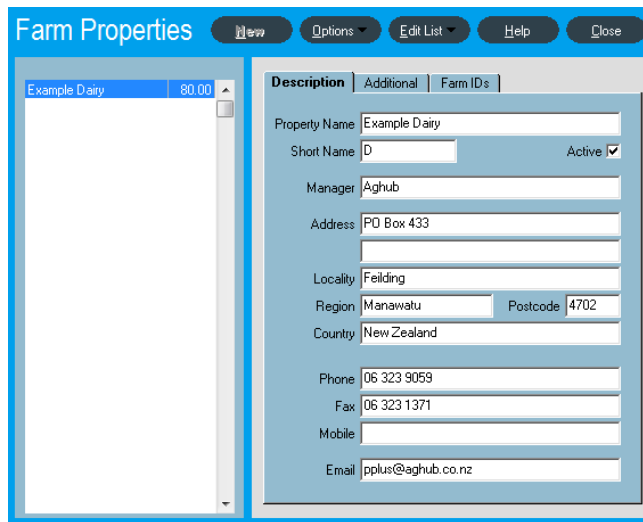
- Configure your land Preferences
- Create and edit properties (see section 4.2)
- Create and edit paddocks (see section 4.3)
- Configure pasture equations (see section 4.7)
- Enter Cover targets (see section 4.6)
- Define the walk order of paddocks (see section 4.3)

*** NOTE:** Please ensure that you have created your properties, paddocks and setup the paddocks sizes before attempting to use the F400.

4.2. Property List

To open the Farm Properties screen, open the Setup screen and in the Farm Setup Section click the Properties button.

This screen allows you to create and edit the property details within your farm.



The left side of the screen lists the Farm Property created. The tabs on the right display the details for the property selected in the list. Click on the farm in the list to change the farm selected.

Only one Farm Property can be created. Land Management Units (LMU's) are used to group paddocks together. See Section 3.8 in the P-Plus User manual for more details. E.g. on dairy farms Land Management Units may be the home farm and a runoff.

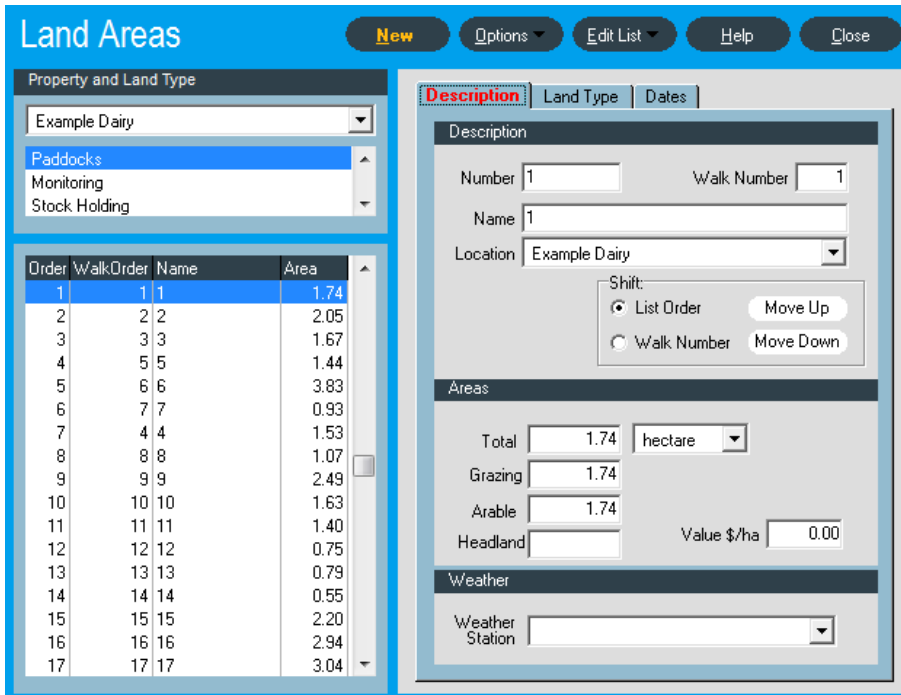
Creating a New Property

1. Click the New button to create a blank form.
2. Type the property name and press <Enter> (on the keyboard). The property name will show in the list on the left.
3. The Short Name will be automatically set to the first letter of the name. You may change this. We suggest you keep the Short Name to one or two characters, and that they be different for each property.
4. Complete the rest of the details if you wish, although it is only for your information.
5. Only create one property in P-Plus, if you have more than one property you need to purchase P-Plus Professional. In some cases you can use land management units to operate with two farms, but this is not always the best way.

4.3. Creating Paddocks

You will need to open the Paddock Land Areas screen. From the Setup screen and in the Paddock Lists section click the **Paddocks** button.

This screen allows you to create and edit paddocks and other areas.



Land Areas [New] [Options] [Edit List] [Help] [Close]

Property and Land Type: Example Dairy

Paddocks
Monitoring
Stock Holding

Order	WalkOrder	Name	Area
1	1	1	1.74
2	2	2	2.05
3	3	3	1.67
4	5	5	1.44
5	6	6	3.83
6	7	7	0.93
7	4	4	1.53
8	8	8	1.07
9	9	9	2.49
10	10	10	1.63
11	11	11	1.40
12	12	12	0.75
13	13	13	0.79
14	14	14	0.55
15	15	15	2.20
16	16	16	2.94
17	17	17	3.04

Description | Land Type | Dates

Description

Number: 1 | Walk Number: 1

Name: 1

Location: Example Dairy

Shift: List Order (Move Up) Walk Number (Move Down)

Areas

Total: 1.74 hectare

Grazing: 1.74

Arable: 1.74

Headland: [] Value \$/ha: 0.00

Weather

Weather Station: []

The left side of the screen lists the Paddocks and other Land areas created. The tabs on the right display the details for the area selected in the list.

The list can display land areas for All Properties or a specific property by selecting the Farm Property in the drop down list.

Paddocks and Other Land Areas

Paddocks are one type of land area. Click on the list to select another area to view. Other areas are:

Monitoring - for special intensive recording or research **areas**.

Stock Holding - for yards, road edges, lanes, etc where stock are commonly grazing or being held.

- Protected** - bush, stream banks, etc that are not normally used for growing crops or grazing.
- Problem** - salinity, chemical contaminated eroded areas that need to be treated differently or fenced off.
- Effluent** - for Effluent Land Areas to be created before placing in the Effluent Management Zone.
- Hazard** - for hazardous areas to be created so they can be placed on the Hazardous zone layer.

A record of all activities carried out on paddock and non-paddock areas can be maintained.

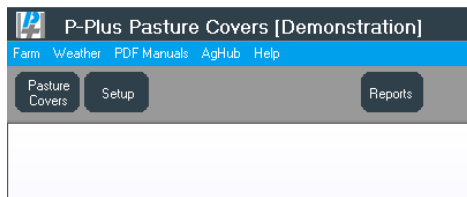
Note: the Paddock area is the only one to have the extra Land Type, Dates and Pasture tabs.

Adding Paddocks

Ensure that Paddocks is selected in the area list, and click on the **New** button to enter information for each paddock.

1. Enter the paddock number. The paddock number may include a letter (e.g. 1a, 1b, 1c). This should be unique within a property.
2. Enter a paddock name if you have one.
3. Select a property from the Location list.
4. The Walk Number is used by the Pasture Cover feature. If you are walk the farm in a different order to the order to which the paddocks are numbered or created, then you can adjust the work order so the cover form for entering the walk figures in the field are in your chosen order. Also the paddock names/numbers will appear in your chosen order when adding cover details on Add/Edit Pasture screen. In the top right corner of the paddock edit window is the walk order; adjust this number to modify the walk order. You will need change the shift option to Walk Number for your changes to take effect.
5. Enter the total (everything included inside the fence lines), grazing and arable (crop) areas of the paddock. If you are using a GPS map, a scaled map, or geo-referenced map then the "Total" paddock areas will be automatically loaded from the map.
6. Select the weather station to be used for analysis of paddock records. If one weather station is appropriate for all paddocks there is no need to select a weather station for each paddock.

Once the task is completed click on the Close button to move on. The P-Plus Pasture Covers screen will appear.



4.4. The Pasture Covers Main Screen

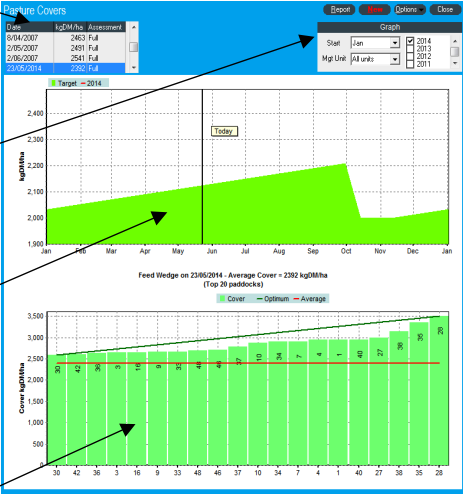
Click on the Pasture Covers button and the screen below will appear. Your screen will not have as much information on it yet, but once you have setup a few things and enter a few months of covers it will begin to look like the screen below.

List of PastureCover undertaken by date with average cover per hectare and assessment type.

Start date of reporting year to display on graphs along with years used

Target Cover (green shade)
Current (today's) Cover (black vertical line)
Previous covers by year (Various colours)

Feed Wedge: of the top twenty paddocks (green) and the average cover line (red). The green line is the "trend"



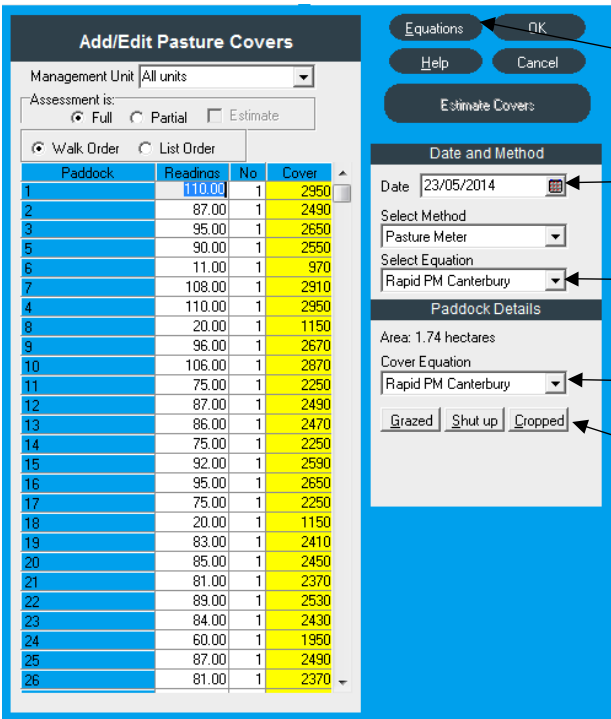
The **New** button: Brings up the Add/Edit Pasture Cover Window, see section 4.3 The Add/Edit Screen for Pasture Covers. This window is the entry screen for recording pasture covers. Before recording, select the method to be used for recording (manual, eyeball, AG HUB Electronic Plate Meter, Feed Reader etc.) as well as the Pasture Equation.

The **Options** button provides the following:

- Edit Covers - edit an existing cover already recorded
- Delete a cover
- Show the graph key for the years of colours available
- Redraw the graph - refreshes the graph
- Edit the Target Covers
- Pasture Cover Importer

4.5. The Add/Edit Screen for Pasture Covers

Click the Equations button to add or modify the plate meter or rapid pasture sensor equations



The screenshot shows the 'Add/Edit Pasture Covers' interface. On the left is a table of paddocks. On the right are control panels for 'Date and Method' and 'Paddock Details'. Callouts point to the 'Equations' button, the 'Date' field, the 'Select Equation' dropdown, and the 'Grazed', 'Shut up', and 'Cropped' buttons.

Paddock	Readings	No	Cover
1	110.00	1	2950
2	87.00	1	2490
3	95.00	1	2650
5	90.00	1	2550
6	11.00	1	970
7	108.00	1	2910
4	110.00	1	2950
8	20.00	1	1150
9	96.00	1	2670
10	106.00	1	2870
11	75.00	1	2250
12	87.00	1	2490
13	86.00	1	2470
14	75.00	1	2250
15	92.00	1	2590
16	95.00	1	2650
17	75.00	1	2250
18	20.00	1	1150
19	83.00	1	2410
20	85.00	1	2450
21	81.00	1	2370
22	89.00	1	2530
23	84.00	1	2430
24	60.00	1	1950
25	87.00	1	2490
26	81.00	1	2370

Date and Method

Date is the date of the Pasture Cover

Select Method is the Pasture Cover method used e.g.: manual, AG HUB Electronic Plate Meter (F200, F300 or F400 Electronic Plate Meter), Pasture Probe, Feed Reader etc.

Select Equation – no equation by default

When using a manual plate meter with two counters select Rising Plate. This will allow you to type the start and end readings from the bottom counter and the plonk count. P-Plus Pasture Covers will do the maths and work out the average cover.

Paddock Details:

Paddocks can be included in the walk or excluded by clicking on these buttons. These will record if the paddock has been grazed, has been shut up (e.g. for silage or hay) or are being cropped. Therefore these can be removed from the average cover. You must use the cover reports to exclude these paddocks, the default feed wedge and average cover does take these options into account.

If you are using the F200 Electronic Plate Meter and you are entering Kg's of DM select the no equation. If you are entering Height select the appropriate equation.

Grazed State

The Grazed state should be set to indicate that stock have just left the paddock. When set, the previous cover will be displayed (which should be greater than the current cover).

The Grazed flag is used by reports for determining grass grown and growth rates.

At this time no decisions are made on this data, but in future versions, the grass grown and grass growth reports will use this information, and thus give far more reliable grass data. In the meantime we suggest setting the pre, post or snapshot flags correctly so that future reports will have a good history of pre-grazing and residual measurements to work with.

Equations

Refer section 4.8

Communications (Method Dependant)

Depending on which method is selected, some configuration for the Communications may be required. E.g. the F400 Electronic Plate Meter requires the COM port on your computer, which has the device, plugged into, to be selected. Also you can choose to "upload paddock data" from the F400 or "download measurements" to the F400.

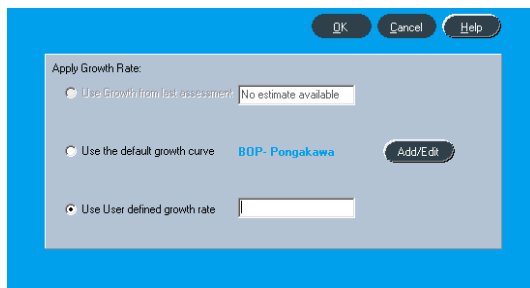
Upload Paddock Data will display a warning to let you know that all existing data on the F400 will be deleted, if you choose to continue with the upload. Upload will transfer selected equations (up to 10) and allow you to assign a default equation. Paddock data, previous Covers, Application Date and Application Rate are also included in the transfer.

Download Measurements will copy all of the pasture cover data from the F400 into the P-Plus cover walk, which is currently open for editing. Also included are the Equations used, and the Grazing states.

Estimate Covers

P-Plus is able to provide you with an estimated Pasture Cover using one of the following options:

- "Use the Growth from last assessment" done in 30 days
- "Use the Default growth curve", which you can select from the Growth Rate setup. The **Add/Edit** button will take you there.
- Use "User defined growth rate" which you can configure.



Assessment

Full – shows that readings are for a full pasture cover walk.

Partial – shows that readings are for a partial pasture cover walk.

Estimate – shows that the readings are estimated by P-Plus using the Estimate method selected.

Walk (Ride) Order

The “walk order” is the order that the paddocks are visited when performing a set of pasture cover measurements over an entire property. The “walk order” is used when the Cover Entry form is printed out to place paddocks in the sequence that they are visited. Also in the Add/Edit Pasture Covers screen, the walk order is used to determine how the paddocks are ordered.

To configure the Walk (Ride) order, click on the Farm menu, then select Setup, then choose Paddocks - refer to Section 4.3.

In the top right corner of the paddock edit window is the walk number; adjust this number to modify the walk order. You will need to change the shift option to from List order to Walk Number to see the effect of changing the walk order. The move up and move down buttons are a quick and easy way to adjust where a paddock appears in the walk order. To enable the move up and move down buttons, first select one particular property rather than the “all properties” option.

4.6. The Target Covers Window

Optimal Grazing Cover: Set the desired/preferred grazed residual and desired/preferred max pasture cover. The trend line will use these settings and will easily show paddocks above or below your desired pasture cover. These values are used on the default feed wedge and the feed wedge displayed from the reports.

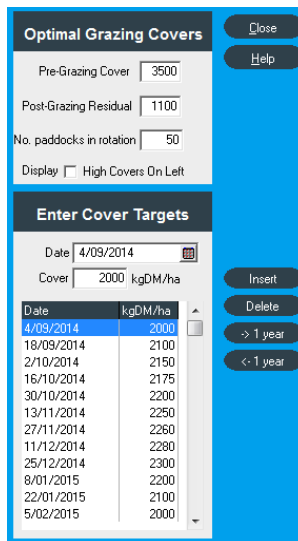
No of Paddocks in Rotation: Enter the number of paddocks the entire farm has for dairy grazing. This number is used to get the optimum line correct on the Full farm feed wedge. When reporting on sub groups of paddocks (Land Management Units) e.g. Herd1 or Herd2 then the number of paddocks in the Land Management unit will be used instead.

Target covers: Target covers can be set so you can see how the farm average cover is trending as compared to how you hoped it would.

To set the Target Covers click on the Options button and Edit Target Covers. Press the Insert button to add a date; the date will typically be 14 days ahead of the last date in the list. These dates can be changed to give a spacing of one month for example. Use the scroll bars to move around the list of dates.

Once this is completed click on the Close button and the targets will be shown on the middle screen.

The target covers and preferred trend line will be displayed on the feed wedge.



Optimal Grazing Covers [Close] [Help]

Pre-Grazing Cover

Post-Grazing Residual

No. paddocks in rotation

Display High Covers On Left

Enter Cover Targets

Date [Calendar icon]

Cover kgDM/ha

Date	kgDM/ha
4/09/2014	2000
18/09/2014	2100
2/10/2014	2150
16/10/2014	2175
30/10/2014	2200
13/11/2014	2250
27/11/2014	2260
11/12/2014	2280
25/12/2014	2300
8/01/2015	2200
22/01/2015	2100
5/02/2015	2000

[Insert] [Delete] [> 1 year] [< - 1 year]

4.7. Entering First Pasture Cover

To enter your set of pasture cover measurements, click on the **New** button and the Add/Edit Pasture Cover screen will be displayed.

Ensure you enter the correct date and method in the right hand window. If you are using the Ag Hub Electronic Plate Meter then select the method as Ag Hub Electronic Rising Plate. The F200, F300 or F400 Electronic Plate Meter, Rapid Pasture Meter etc. can also be selected from the list of Methods if required.

There are two main categories of equation available.

- 1) The first category of equation is when the measurement you wish to enter is already in units of KgDM/Ha. The cover may have been assessed by eye, or an electronic rising plate meter or the Rapid Pasture Meter may have already performed the conversion from height to KgDM/Ha externally. This is normally the first equation that appears in the list and is called Height/Eyeball/No Equation/Actual. It is recommended that this equation be used for electronic rising plate meters.
- 2) The second category of equation is used when a raw height measurement in mm or cm is entered and the conversion of height to KgDM/Ha is performed internally by P-Plus. P-Plus comes with some pre-canned equations relevant to common pasture measurement devices. If you wish to enter a personalised equation, click on the Equations button at the top of the screen.

On the left hand side of the screen the readings that you have taken from the electronic rising plate meter or the Rapid Pasture Meter in kilograms of dry matter per hectare. If you have only recorded height, then you will need to change the equation relevant to the type of measurement device and season e.g. Pasture Meter Winter.

After entering all pasture covers for all paddocks you can click on the **Close** button. On the middle screen the red line will be shown, along with a black line indicating the current date.

The feed wedge can be displayed at the bottom of the pasture covers and will provide the top 20 paddocks of the total feed wedge. If you wish to see all the paddocks, you will need to print this out via Reports. **Note** - You cannot print until you receive the licence file from our support staff.

At any time you can edit the pasture covers by double left clicking on the date of the cover that you wish to edit and alter the figures accordingly. This also applies to the cover targets, which can be edited at any time.

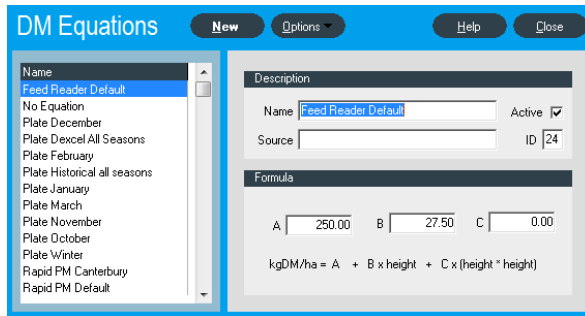
Note: Examples of Equations:

Feed Reader Default	A=250	B=27.5	C=0
No equation	A=0	B=1	C=0
Plate December	A=1200	B=140	C=0
Plate Dexcel All Seasons	A=500	B=140	C=0
Plate February	A=1200	B=185	C=0
Plate Historical All Seasons	A=200	B=158	C=0
Plate January	A=1250	B=165	C=0
Plate March	A=1100	B=170	C=0
Plate November	A=1000	B=120	C=0
Plate October	A=850	B=115	C=0
Plate Winter	A=500	B=140	C=0
Rapid PM Canterbury	A=750	B=20	C=0
Rapid PM Default	A=750	B=18.60	C=0
Rapid PM Wairarapa	A=450	B=18.60	C=0
Rapid PM West Coast	A=522	B=14.30	C=0

(Height Equation – in the default this is set the same as Eyeball kgDM/ha equation)

4.8. Pasture Cover Equation

The cover equation provides a mechanism for taking pasture height measurement (e.g. a rising plate meter) or other measures such as the pasture probe and converting these to KgDM/ha. The range of equations can be extensive and you will need to refer to the relevant operating manual for the given tool. There will be different equations for different times of the year to allow for variations in the physiological state of the pasture (vegetative, flowering, and seeding) and the pasture composition.



If you are using a AG HUB Electronic Rising Plate Meter then this section does not apply as the mathematics are already performed on the plate meter in this case the equation is set to the height or no equation as the multiplied value, B=1. It is important to ensure you are using the correct equation to calculate the KgDM/ha value, given the pasture height the plate meter reads.

For rising plate meters traditionally the equation F2 (158 + height x 200) was used throughout New Zealand. The main exception being Taranaki where F3 (158 x height + 1000) was preferred.

The F400 Ag Hub Electronic Rising Plate Meter default equation is the modern equation (140 + height x 500) and is used throughout New Zealand.

A more accurate calibration can be achieved by taking cuttings, or your consultant may be able to advise you on the most appropriate equation for you.

Today DairyNZ are promoting a new range of equations to more accurately reflect the changes in the growth stages of the pasture. There may be some modification to these equations depending on the season and the influences of management practices e.g. irrigation.

Check with your DairyNZ or other consultant for the latest equations
<http://www.dairynz.co.nz>

You may choose to select your Plate Meter to not calculate the KgDM/ha and use the equations. This gives you the ability to use a different equation if you feel the monthly equation is not suitable for your pasture.

To configure the equation, **A** is the add figure and **B** is the multiply figure. Examples of Equations are:

Feed Reader Default	A=250	B=27.5	C=0
No equation	A=0	B=1	C=0
Rapid PM Default	A=750	B=18.60	C=0

5. USB Drivers

5.1. What are USB Drivers

A USB Driver is software that provides users of Devices containing an FTDI chip, the ability to connect and use the device on computer running Windows 98 or Windows ME.

5.2. How to install the USB Drivers

Under Windows 98 and ME, the Found New Hardware Wizard should be used to install devices when they are connected to the PC for the first time, as this is the recommended procedure for reliable device operation.

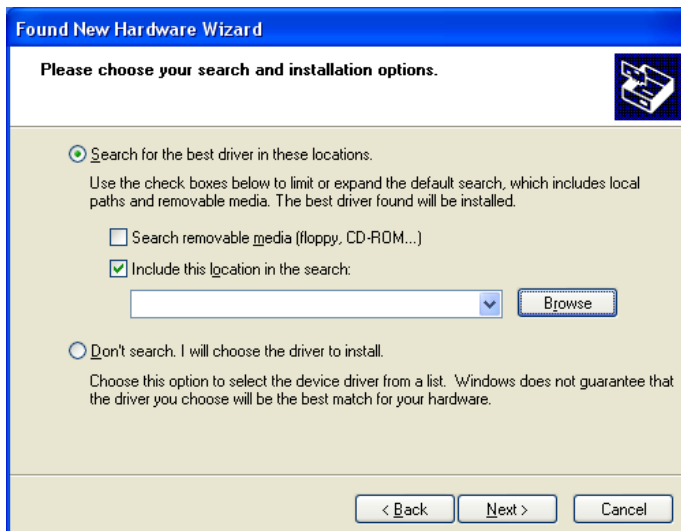
Connect the device to a spare USB port on your PC. This will launch the Windows Add New Hardware Wizard. Windows may display a message reading "Building driver database" at this point which may take a few minutes to pass.



Select "Install from a list or specific location (Advanced)" as shown below and then click "Next".



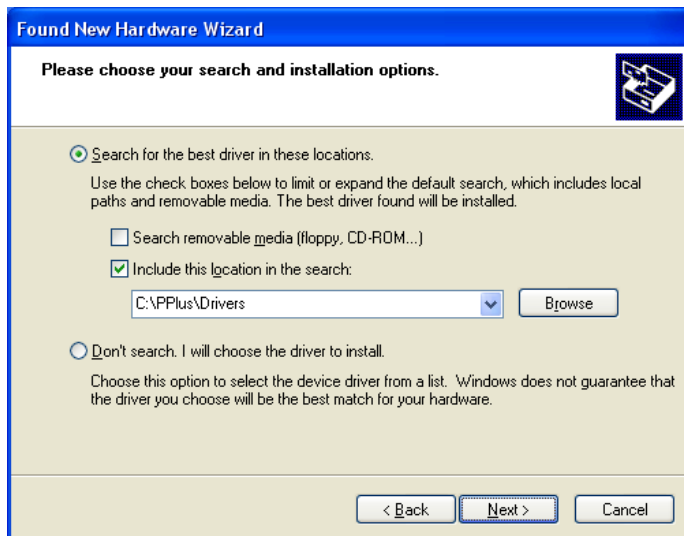
Check the box next to "Include this location in the search" and uncheck all others as shown below. Click "Browse" and locate the driver files in c:\PPlus\Drivers directory.

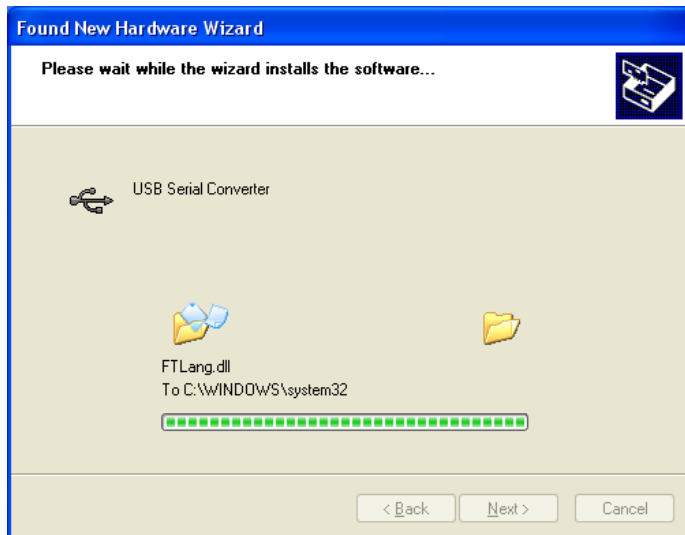


Once the files have been located, click "OK" to proceed with the installation.



With the P-Plus Driver path displayed as the location to search, click "Next" to proceed with the installation.





Windows should then display a message indicating that the installation was successful. Click on "Finish" to complete the installation. The device is now ready for use.



Vista/XP Users: Please note you may need to repeat the above process twice as Vista adds the drivers in 2 parts, the first part is the FTDI drivers and the second is the Virtual USB Drivers.

If the F400 does not show anything on the screen while plugged in that means the drivers have not been installed correctly.

6. Assembling the Rising Plate Meter

Normally the Plate Meter will come already assembled and will only require two steps to complete ready for use, as follows:

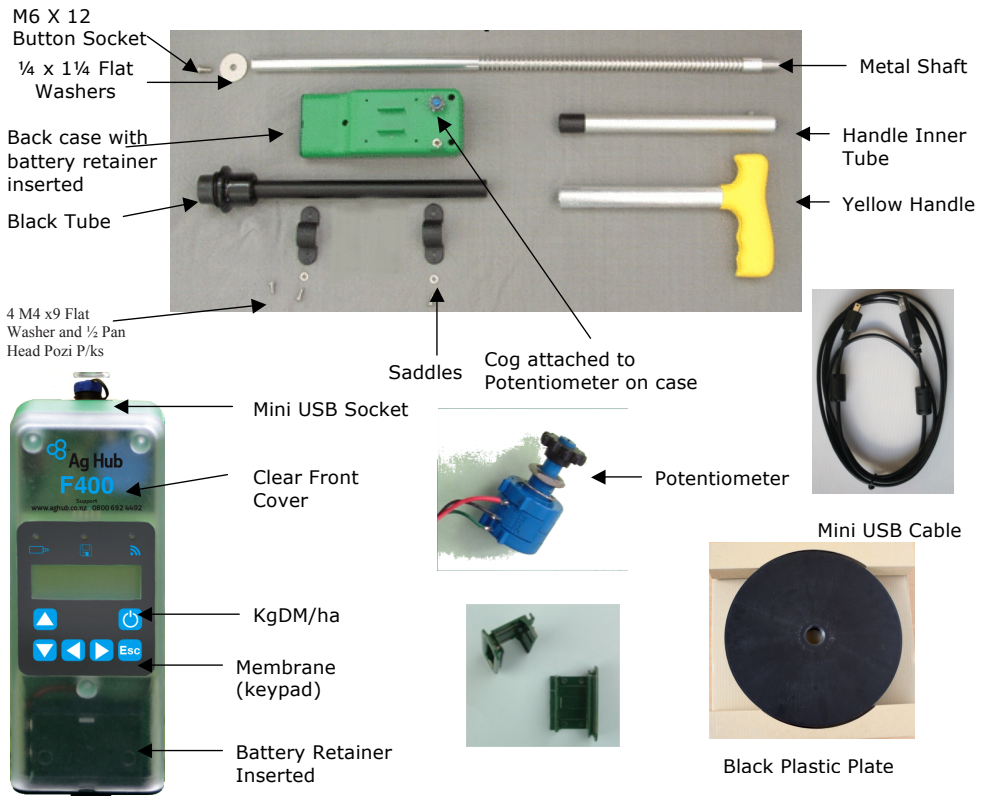
- Screw the inner tube of the yellow handle onto the threaded top of the graduated shaft
- Screw on the black plastic plate to the lower end of the black tube.

If you are retro-fitting an electronic counter to a Manual Plate Meter, then follow the steps outlined in section 8. Retrofitting an Electronic Counter to a Manual Plate Meter

7. Component Parts

If your Plate Meter is damaged or you require replacement parts please refer to the diagram below to identify the correct part. In general all components are readily replaceable by the user except for the potentiometer, membrane, or components within the counter.

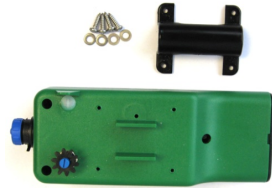
Contact: APOLLO ELECTRONICS LTD, to discuss servicing options.



8. Retrofitting an Electronic Counter to a Manual Plate Meter

An electronic counter can be attached to most manual Plate Meters with little or no modification. However it is essential that care be taken to ensure it is correctly attached and aligned to ensure smooth operation.

Remove all existing mechanical counters from the Plate Meter (if applicable).



Check that a cog is attached to the small shank on the back of the counter. To attach a cog to the shank of the counter **DO NOT USE EXCESSIVE PRESSURE**. It is best to heat the cog in a hot cup of water prior to pressing onto the shaft.

Lay the Electronic Plate Counter face down on a flat surface so that the cog is to your left. Turn the cog on the counter anti-clockwise (to the left) until it stops. Hold the Plate Meter with the handle to the left. The slit in the shaft where the cog fits should face toward you.

Make sure the metal shaft is fully closed to the bottom end of the black tube. If you have difficulty keeping the plate closed we suggest that you bind some tape around the large washer and the bulb of the black tube.

Place the black tube with the steel shaft inserted onto the back of the counter, fitting the Cog into the slit of the tube. The Cog should be situated mid-way in the slit in the black tube.



Place the single saddle plastic bracket onto the black tube, aligning the holes in the bracket with the holes in the back of the counter.

Place a screw and washer in each side of the clip and half tighten; making sure that the Cog is not too close or too far away from the metal shaft, tighten the four screws. The metal shaft should move freely inside the black tube. Turn it to make sure it moves easily in all positions. If it sticks then either the black tube or metal shaft may be damaged, bent or corroded and may need replacing, or it is not correctly aligned on the counter.



Attach the plastic plate by screwing on to the bulb of the black tube.

Place the Plate Meter in an upright position on a hard surface to check the plate closes fully.

IMPORTANT: Before attempting your first pasture walk follow the instructions in sections 12.4. Things to do before you start your walk and 12.4.3 Zero Calibration



Enhancement: In early 2006 the black tube has been modified to accept a single saddle arrangement that will reduce the need for the rubber strips and provide greater binding therefore reducing the chances of the saddle moving on the shaft.

9. Caring For Your Plate Meter

9.1. Avoid getting the counter wet

The counter is in a robust case which is splash proof, however, as it is an electronic device, so try to avoid getting the counter saturated.

9.2. Keep the shaft clean

The shaft can get a build up of dirt that affects the accuracy of the Plate Meter, as the shaft will not run smoothly, and more force is required to take a reading. Clean the shaft with a poly pad or similar. Do not use lubricant as this will build up inside the black outer shaft.

10. The Battery

10.1. Recharging the Battery

The Electronic Counter is powered by a single rechargeable battery, which should give 24-26 hours continuous use between charges.

A low battery warning is built in to the counter and might be displayed when switched on. You can continue to take readings, however it is recommended the battery be recharged before using the plate meter for an extended period.

When the F400 is connected to your computer using the Mini USB cable, it will switch ON and the battery will be recharged. Charging the Plate Meter can only be done using a Mini USB cable. A standard 2 meter Mini USB cable is provided, but a 5 meter one is available at an extra charge. Please note that a wall charger is not an option at this stage.

Attach the Mini USB cable to the small USB socket on the top of the unit. There may be a plastic screw cap that protects this socket, which needs to be removed first.



Connect the larger USB plug on the other end of the USB cable into a USB socket on your computer. The unit will beep, and switch ON automatically and the red LED on the front of the unit will light up if the USB cable is connected correctly. When the battery is fully recharged the unit will give 2 long beeps and display 'Charging Complete'.

For best results, occasionally allow the F400 to remain on charge overnight. Disconnect the Mini USB cable from the F400 switch the unit 'ON'. There should not be any low battery warning.

The rechargeable battery should give years of service before needing to be replaced. If it does need replacing, the instructions on how to do so are in section 10.2 Replacing the Rechargeable Battery.

10.2. Replacing the Rechargeable Battery

The rechargeable battery can be recharged hundreds of times, but eventually the serviceable time between charges will shorten. When this happens, a replacement battery should be fitted. To replace the rechargeable battery please contact Apollo Electronics.

**Apollo Electronics Ltd
4 Lombard Street
Palmerston North 4410
Ph 06-3551497 or Fax 06-3553441**

11. Servicing & Repairs

Should an electronic fault develop with your F400 plate meter, then the counter should be removed from the shaft and sent for servicing to:

**Apollo Electronics Ltd
4 Lombard Street
Palmerston North, 4410
Ph: 06-3551497
Fax: 06-3553441**

A standard service charge including return freight (in NZ), applies to all electronic repairs. (No electronic components are sold as spare parts). If in NZ, contact Apollo Electronics Ltd to establish the current standard cost and enclose a crossed cheque payable to Apollo with your counter.

If the complete Plate Meter is sent for repair, any further mechanical parts that need to be replaced there will be at an additional cost. All Mechanical components as shown above can be purchased as a spare part. Please contact Apollo Electronics Ltd for pricing.

If outside New Zealand then contact your local distributor.

12. Operating the Electronic Counter







12.1. Switching Unit On and Off

The Electronic Plate Counter is switched On and Off by pressing the ENTER key on the front of the unit for 1 second. When the unit is Off there are no numbers displayed on the LCD screen and all of the LED's should be Off.

The 2 Minute Auto-Shut off function means that the Plate Meter will switch itself off if there is no activity for 2 minutes.

12.2. The Front Display Buttons

The six buttons on the front of the unit access the various functions of the F400:

-  Up Arrow – used to scroll up through the main menu functions, paddocks, equations etc.
-  Down Arrow – used to scroll down through main menu functions, paddocks, equations etc. Also used for upgrading the software on the unit.
-  Left Arrow – used to scroll back through options such as equations, units, views etc.
-  Right Arrow – used to scroll through options such as equations, units, views etc.
-  Esc – takes you back to the previous menu. It can also be used to Cancel the task.
-  ENTER – Used to switch unit ON and OFF and to accept selections.

When the unit is first switched on the display will show the model number and the version number.

The menu options will then be displayed for selection, with Measure being the first option to be displayed.



12.3. Menu Options

There are a number of menu options available for section on the F400.

1. Measure

This option allows for paddock and equation selection prior to starting Pasture Walk. Please refer to section 16. Taking Paddock Readings (The Pasture Walk), for more information.

2. Temperature

This option displays the current temperature in Degrees Celsius e.g. 20.9 Celsius.

3. Date & Time

This option displays the current date and time (24 hour) in the following format:
HH:MM:SS
DD/MM/YYYY.

4. Battery Level

This option displays the Battery Level in Volts.
% Charged=
Volts=4.23

5. Zero Calibrate

This option displays the Calibration status, and allows you to re-calibrate if required. For more details on how to use the Zero Calibration feature, please refer to section 12.4.4 how to Zero Calibrate your Plate Meter

6. Anti-roll

This option displays the Anti-roll status, and allows you to turn the Anti-roll ON/OFF.

Having Anti-roll ON means it will wait for a period of time before taking a measurement.

If Anti-roll is ON it will show the following on the screen:

Anti-roll
ON

Having Anti-roll OFF will take measurements like the old Plate Meter, where a measurement is taken at the highest point and there is no wait time.

Anti-roll
OFF

To change Anti-roll status press the ENTER Button while on the Anti-roll Menu, once that is pressed you will see the following:

Anti-roll
ON< >OFF

To turn ON Press the Left Arrow, to turn OFF Press the Right Arrow.

7. Grazing State

This option displays the Grazing State, and allows you to turn the Grazing State ON/OFF.

Having Grazing State ON means you will be prompted to save the Grazing State of each paddock when you save the Paddock Readings.

If Grazing State is ON it will show the following on the screen:

Grazing
State is ON

To change the Grazing State press the ENTER button while on the Grazing State menu, once that is pressed you will see the following:

Grazing
ON< >OFF

To turn ON Press the Left Arrow, to turn OFF Press the Right Arrow.

8. Equation (Only visible if the F400 has 1 equation programmed)

This option displays the Equation used, this option will only show if the F400 has been programmed with 1 equation.

Equation Name
A= B=

12.4. Things to do before you start your walk

There are three items to be addressed before starting a new walk. This is best done prior to leaving the shed to start a pasture walk.

12.4.1 Ensure the P-Plus Farm Management Software is Installed

Before you can begin using your F400, you will need to ensure that you have P-Plus Farm Management software installed on your computer. If it is not installed you will need to refer to the section on How to install P-Plus Pasture Cover.

With P-Plus Farm Management Software installed on your computer, you will need to setup your farm by creating a property, paddocks, and equations and define the walk order, before you can upload paddock details and equations for your Pasture Cover walks, into your F400 Plate Meter.

Ensure you are not using the demonstration Farm

12.4.2 Entering the Formula (Equations)

When you receive your Plate Meter it will NOT have any data on it. You will have to use your P-Plus Farm Management software to load Paddocks and Equations into your F400. Please refer to section 14. Uploading Data & Equations to F400 for instructions on how to transfer the Formulas to your F400.

In 2001 new research provided new formula options that were more relevant to regions, pasture types and management techniques, i.e. irrigated pasture. The research also provided equations to more accurately reflect the physiological state of the pastures e.g. vegetative versus reproductive state.

Some examples are:

Winter (April-Sept)	Plate Meter Reading x 140 + 500 (Factory Default)
October	Plate Meter Reading x 115 + 850
November	Plate Meter Reading x 120 + 1000
December	Plate Meter Reading x 140 + 1200

The P-Plus Farm Management software allows you to select your own equations or use those recommended by consultants, DairyNZ or Meat & Wool. Please refer to section 3. Current New Zealand Dairy Equations for more examples of the DairyNZ equations.

12.4.3 Start up/Self test

Switch On. The unit will beep and display 'F400' and the version of software, followed by the first of the menu options; Measure.

If the battery is low, the F400 will beep and will then display 'Recharge'.

If the battery gets down to 3.3 volts, the Red LED will blink twice, the unit will beep and turn off automatically, and no further readings can be taken, until the battery has been fully recharged.

12.4.4 How to Zero Calibrate your Plate Meter

To ensure the Plate Meter accurately measures the compressed height of pasture, the counter must be calibrated. This requires setting a base level of zero so measurements can be benchmarked against this. If the counter does not return to zero after each "plonk" it will not record the measurement - hence the counter will not beep.

If the counter is removed from the black tube or receives a severe knock it may jump a groove on the steel shaft, which will put the counter out of calibration. It will need to be re-calibrated.

To perform the calibration, please refer to the following steps:

- Switch the unit on by pressing the ENTER key for 1 second. The unit will then beep, and display the version number.
- Scroll through the menu items on the F400 using the UP or DOWN arrow keys until you find 'Calibrate'.
- Pressing the ENTER key will show the current position, making sure that the plate is in the home position.

- You will then need to turn the Potentiometer (blue bit) anti clockwise until it's calibrated. When it goes down to zero it will mean it is calibrated and the F400 will do 2 short beeps and then display 'Calibrated.'
- If a user enters the Calibration menu and it's already at 0, it will double beep and then show Calibrated.
- If a user enters the Calibrate Menu and its not calibrated it will do 2 Long Beeps (approx 1 second each).
- An alternative method to use if a screwdriver is not available, is to simply press the ENTER key and that will set the offset. So if it's off by 5 points and you press the enter key, the F400 will put an off set of 5 points. However, in order to ensure accuracy in the readings, it is recommended that you calibrate it using a screwdriver.

13. Current New Zealand Dairy Equations

For your convenience the following are the equations promoted by DairyNZ for dairy pastures since May 2001. Please refer to the section on 12.4.2 Entering the Formula for more information on how to enter the appropriate equation.

These formulas are in P-Plus already and to use them you will need to upload them to your F400 Plate Meter.

Months	Rising Plate Meter Equations Dairy Pastures
Winter (April-Sept)	Plate Meter Reading x 140 + 500 (Factory Default)
October	Plate Meter Reading x 115 + 850
November	Plate Meter Reading x 120 + 1000
December	Plate Meter Reading x 140 + 1200
January	Plate Meter Reading x 165 + 1250
February	Plate Meter Reading x 185 + 1200
March	Plate Meter Reading x 170 + 1100

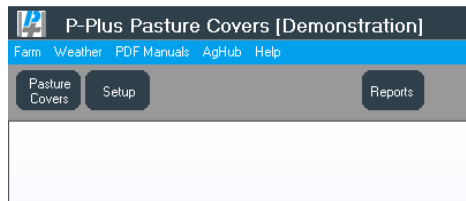
Equations may change without notice and are influenced by seasonal differences. If you are unsure of the current equation contact Dairy NZ or your local consultant. There are also different equations suited to summer, wet and irrigated pasture that are not recorded here.

Sheep and Beef pastures differ in density to dairy pastures and will therefore require different equations.

13.1. Entering your own formula

To enter your own cover equation or one that may have been recommended by a third party such as your consultant, Dairy NZ or Meat & Wool please do the following:

- 13.1.1. Connect the Mini USB cable to both the F400 and a spare USB port on your computer.
- 13.1.2. Start up P-Plus Farm Management Software on your computer.
- 13.1.3. Select the 'Pasture Covers' button from the main tool bar.

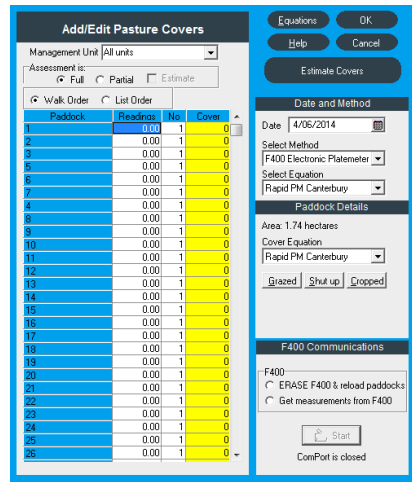


- 13.1.4. Click on 'New' as if you were creating a 'New' Pasture Cover. If it is the first time you have connected a Plate Meter to your computer, you will be asked for the Com port number that it is connected to.
- 13.1.5. The Add/Edit Pasture Covers window appears.
- 13.1.6. Make sure that the F400 Electronic Plate Meter is the selected method. If this is the first time you have selected the F400 as the method, you will be prompted for the COM port number it is attached to using the Mini USB cable.

- 13.1.7. Pressing the 'Equations' button at the top of the Add/Edit Pasture Covers window, allows creation of new equations and editing of existing equations.

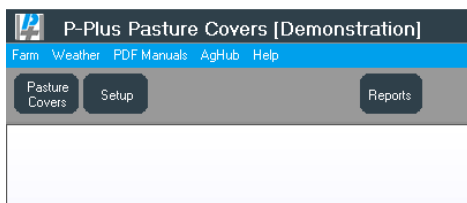
- 13.1.8. When you have either created or edited an Equation, press the 'Close' button to save.

- 13.1.9. The New or Updated Equation can now be transferred to the F400 unit. Please refer to section 14. Uploading Data & Equations to F400 for detailed instructions on how to do this.

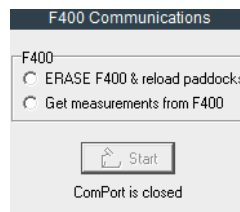


14. Uploading Data & Equations to F400

- 14.1.1 Connect the Mini USB cable to both the F400 and a spare USB port on your computer. If this is the first time you have connected a F400 Plate Meter to your computer please follow the prompts to install the driver, if the drivers cannot be found automatically by windows, please select c:\ppplus\drivers\ as the location for windows to check. Please refer to section 5. USB Drivers
- 14.1.2 Start up P-Plus Farm Management Software on your computer if it is not already running.
- 14.1.3 If your farm name is not displayed in the main grey title bar (the screen shot below shows the farm name as [Own Farm]) then from the 'Farm' menu, click on 'Select Farm' This will display a list of your farms to choose from. If you have not yet created your own farm, please follow the steps in section 4.1 Pasture Cover Setup to create your farm(s) and paddocks. Select the 'Pasture Covers' button from the main tool bar.



- 14.1.4 Click on 'New' as if you were creating a 'New' Pasture Cover.
- 14.1.5 The Add/Edit Pasture Covers window appears.
- 14.1.6 Ensure 'F400 Electronic Plate Meter' is the selected Method.
- 14.1.7 From the F400 Communications section, Select 'Upload Paddock Data' then press the 'Start' button.
- 14.1.8 You may also be asked to select the COM port which you have connected the Mini USB cable from the F400 to your computer.
- 14.1.9 You will be prompted to confirm if you want to delete all existing data on the F400.
- 14.1.10 Select 'Yes' to confirm.
- 14.1.11 The F400 unit will beep and in addition to the red LED, the green and blue LED's switch on.
- 14.1.12 The F400 screen will display the words 'P-Plus Deleting'
- 14.1.13 When the data has been deleted from the F400 Plate Meter, the unit beeps and the green LED switches off.



- 14.1.14 You will be prompted to select which equations you want to download from P-Plus to the F400 Plate Meter. After selecting the equations to transfer, press 'Select' to begin the transfer.
- 14.1.15 If more than one equation was selected, then you will need to select which of the equations you want to transfer to the F400, will be used as the Default Equation.
- 14.1.16 When the equations have been transferred, the paddock details will be transferred also.
- 14.1.17 When transfers are complete a message saying "Upload Complete" will be displayed on your computer.
- 14.1.18 You can now use your F400 Plate Meter to perform your Pasture Cover walks.

15. Using the Correct Measuring Technique

Differences in Rising Plate Meter measuring technique can alter pasture covers by as much as 600 kgDM/ha. This can be the difference between thinking there is adequate or even surplus pasture available and all is well, or pasture deficit and urgent action is required.

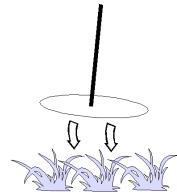
All pasture measurement techniques require calibration to convert the actual reading to dry matter. The technique that is used when walking around the farm taking the measurements needs to be the same as that used to calibrate the Rising Plate Meter. This technique is to place the plate on top of the pasture with no downward force, and then push the shaft to ground level - making sure the plate is vertical when the shaft hits the ground.

Taking measurements by holding the Plate Meter 10cm or more above the top of the pasture and plunging the plate onto the pasture will give lower, incorrect readings. This is because the downward force of the plate compresses the pasture more than occurred when the calibrations were down, giving a lower average height and cover readings.

These two techniques are illustrated below.

15.1. Incorrect Technique

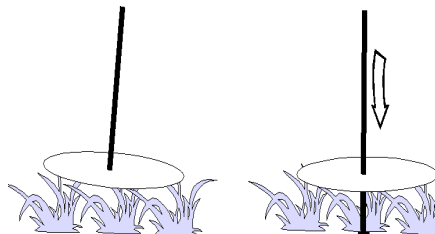
- The Plate Meter is held above the pasture and plunged in one movement onto the pasture.
- The higher the plate is held and the greater the force applied, the lower the reading will be.



15.2. Correct Technique

- Place the plate on top of the pasture with as little pressure as possible.
- Push the shaft down to ground level with the shaft vertical.

When using the correct technique, no differences have been found in the readings between the AG HUB Electronic Plate Meter and any of the mechanical Plate Meters. However, operators using the incorrect technique will get lower readings with any Plate Meter than those using the correct technique.



16. Taking Paddock Readings (The Pasture Walk)

16.1. How to Take Paddock Readings

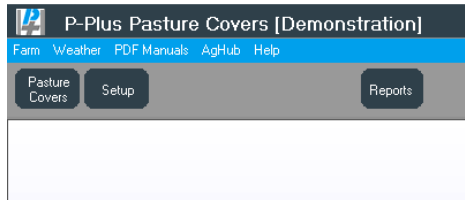
IMPORTANT: PLEASE ENSURE THAT YOU WAIT FOR THE F400 TO BEEP AT EACH PLONK, BEFORE LIFTING; OTHERWISE THE READING WILL NOT BE RECORDED.

- 16.1.1. Switch the unit on by pressing the ENTER key on the front of the unit for 1 second. The unit will beep and display the version number of the current software.
- 16.1.2. 'Measure' is the first option to be displayed on the unit. Press the ENTER key to show the paddock name. Another Paddock can be selected using the UP and DOWN arrow keys on the front of the unit. Press the ENTER key to select paddock. If a paddock has already been measured it will show the Cover next to the paddock number, and by pressing the left and right keys you can view the growth rate and paddock size and the Current Cover.
- 16.1.3. The default equation is then displayed for the selected paddock. This can be changed using the UP and DOWN arrow keys. Pressing the RIGHT Arrow key will display the A, B and C values for the equation. Press the ENTER key to select the equation for the paddock you are about to take readings in.
- 16.1.4. Walk across the paddock taking readings every few paces. You will hear a beep every time a reading is stored. **DO NOT LIFT THE UNIT UNTIL YOU HEAR THE BEEP.** The kgDM/ha is immediately recalculated and displayed. The number of samples (plonks) to be taken should range between 20 and 40 per paddock however this will be determined by the variance existing in the cover. This is the recommended number of readings. The Plate Meter will give 3 short beeps when 30 readings have been recorded. Plonks need to be taken on a regular basis e.g. every five paces to even out any variations, however avoid stock camp areas, tracks or uncharacteristic areas. The greater the variability the greater the number of plonks you should take.
- 16.1.5. The unit will give 2 quick beeps and a warning is displayed if the plate is not returned to 0 height. If it does not return to zero, please refer to section 12.4.4 How to Zero Calibrate your Plate Meter.
- 16.1.6. If there is no activity for 2 minutes the unit will beep and a warning is given that the unit will power OFF in 5 seconds. The F400 remembers the state it was in, so when you switch it back on it will carry on from where you left off.
- 16.1.7. If you need to negotiate an obstacle (e.g. fence or creek) switch the unit off so that no readings are taken if the plate moves. On the other side of the obstacle, switch the unit back on and continue taking readings. The F400 remembers the state it was in, so when you switch it back on it will carry on from where you left off.
- 16.1.8. Pressing the RIGHT arrow key changes the units, which the average readings are displayed in KGDM to Millimetres to Clicks. LEFT arrow keys then changes the units for the average readings from Clicks to Millimetres to KGDM. Clicks are measured in 0.5cm and will be displayed to one decimal place (i.e. 0.0 or 12.4). Note: 1 click= 0.5cm

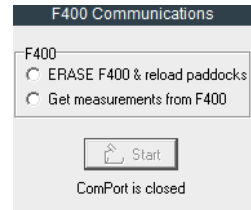
- 16.1.9. UP arrow key will display Last Cover in KGDM/Ha, Last height in mm, Last Equation used, Paddock Size in Ha, Application Date, and Application Rate KgN/Ha. Press Esc to return to the current readings. To show Nitrogen Application date and rate you will need P-Plus Map and Paddock.
- 16.1.10. When you have completed the paddock, press the ENTER key for the option to save the readings. Use the LEFT arrow key for No and RIGHT arrow key for Yes. Selecting No will show an additional prompt which requires the ENTER key to be pressed to confirm the deletion of the readings.
- 16.1.11. If Yes is selected, you will be prompted to save the Grazing State only if the Grazing State has been turned ON prior to the paddock readings being undertaken. The Grazing State options are None; Grazed; Shut-Up; Cropped. The UP and DOWN arrow keys allow you to scroll through these. The ENTER key is used to select the Grazing State.
- 16.1.12. Repeat this process until you have completed every paddock.
- 16.1.13. Switch the unit off by holding down the ENTER key for 5 seconds.

17. Downloading from F400 to P-Plus

1. Connect the Mini USB cable to both the F400 and a spare USB port on your computer.
2. Start up P-Plus Farm Management Software on your computer if it is not already running.
3. Select the 'Pasture Covers' button from the main tool bar.



4. Click on 'New' as if you were creating a 'New' Pasture Cover. The Add/Edit Pasture Covers window appears.
5. Ensure 'F400 Electronic Plate Meter' is the selected method
6. From the F400 Communications section, select 'Download measurements' then press the 'Start' button.
7. You may also be asked to select the COM port which you have connected the Mini USB cable from the F400 to your computer.



8. A progress Bar on the Pasture Covers screen shows the rate at which data is being received from the F400.
9. When the transfer begins the F400 unit beeps and in addition to the red LED, the green and blue LED's switch on.
10. The F400 screen will display the words 'P-Plus Transmitting'
11. When the data has been received from the F400, the unit beeps and the green LED switches off.
12. When the transfer is complete a message saying "Download Complete" will be displayed on your computer.
13. The data received will be displayed in the Pasture Cover you created and will be available for use in reports, graphs etc. within your P-Plus Farm Management software.
14. Please Note before going out to do another walk please re-upload the paddocks and equations.

18. Pasture Cover Reports

There are a number of different reports that can be selected for reporting your cover. The main reports are: Cover On Date; Feed Wedge On Date; Cover Graph; Tonnes Grown and the Cover Entry Form.

Cover on Date: This will provide a cover report for each paddock whose cover was measured on a particular date. The Report window has a number of options that can be selected to include extra information. This can include items such as paddocks shut up for hay, paddocks already grazed, or paddocks taken out for crop(ping). This will have an influence on the total cover, or average cover displayed for the property. Use the scroll bar to see the lower part of the page. The report can be sorted by Cover, by selecting the Sort/Group Data option. Note the growth shown is the growth between walks, NOT average growth. Average Growth will be displayed in a future version, BUT you must use the pre-grazing and post-grazing flags when entering your pasture covers for this new report to work.

Cover on Date (All units)										
7/08/2006 - 1881 kgDM/ha										
P-Plus Demo										
File Not										
Date 7/08/2006										
Page 1										
Pad No	Paddock Name	Area	Grazed	Shut Up	Crop ped	Pre/Post Flag	Cover kgDM/ha	Total	Last Cover 3/08/2006 1	Growth kgDM/ha/d
1	G-1	2.2					1202	2536	1222	
3	G-2	2.9					1333	3879	1333	
4	G-3	2.6					1434	3665	1444	
5	G-4	3.0					1544	4678	1555	
6	G-5	2.6					1666	4265	1666	
7	G-6	2.7					1777	4727	1777	
8	G-7	2.6					1888	4965	1777	27.8
9	G-8	2.6					1999	5277	1888	27.8
11	G-15	3.2					2000	6480	2333	
12	G-16	2.4					2111	4962	2444	
13	G-17	2.4					2232	5357	2555	

Feed Wedge on Date: This report is far more configurable than the default feed wedge that is automatically displayed. You can display all paddocks not just the top 20, and exclude cropped and shut up paddocks. If you require you can adjust the kgDM/ha range for example 1700-2300 kgDM/ha so you can more easily see the difference between the paddocks. To adjust the kgDM/ha double click on the graph and another window will appear. Set the minimum and maximum value as required. The green trend line is configured from the Target Covers Window – Section 4.6

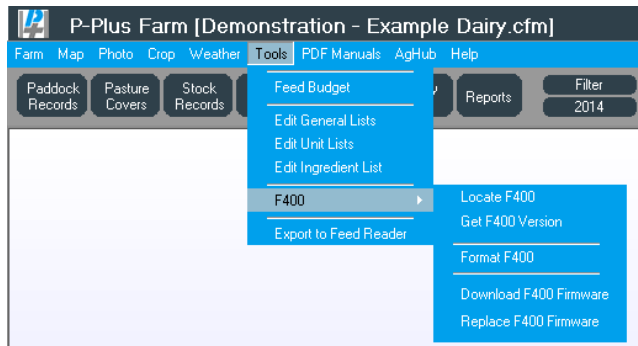
Cover Graph: Graphs the average farm cover by year. Also shows the cover target line as well. It can be used to compare different year's average cover on the farm.

Tonnes Grown: This will provide a report on Tonnes of DM grown per Ha in each paddock, along with the number of days growing and the annual total for each paddock.

Cover Entry Form: Prints a form to write down your paddock covers. The paddocks are in your walk order or list order and each paddock has the last two covers available so you can see how each paddock compares to its previous readings while out on the farm. HINT – Fold the printed form in half long ways and staple onto a piece of hard cardboard. The sheet should fit in your pocket while still displaying all the information you need while out on the farm.

19. Updating the F400 Software Version

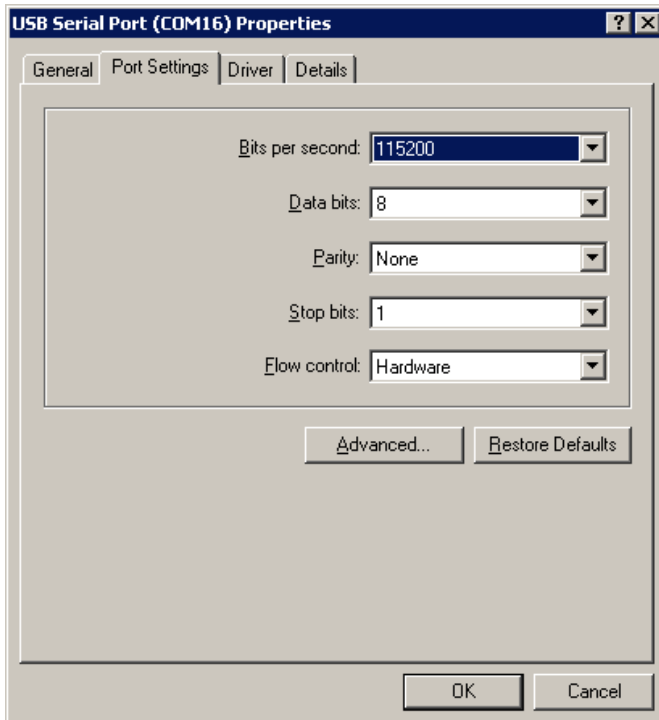
1. Start up P-Plus Farm Management Software on your computer if it is not already running.
2. Connect the USB cable to a USB socket on your computer.
3. Ensure the F400 unit is switched OFF.
4. Press and hold the DOWN Arrow key on the F400 unit while plugging the Mini USB Cable into the Mini USB socket on the top of the F400 unit. If connection has been established then the Green LED will flash above the Disk symbol on the front of the unit.
5. Ensure that the file containing the new version of software for the F400 is copied into your P-Plus directory. The file is called Update.enc. Also make sure that there is a file in the P-Plus directory called Update.exe.
6. From the tools menu select F400, and then 'Update F400'. You may like to select 'Get F400 Version' prior to performing the update to find out what the version number of software currently is installed on your F400.



7. A message will be displayed, and will require your confirmation to proceed with the update.
8. The first time an update is attempted, you will be prompted to select the COM port to use.
9. A progress bar is displayed. A blue light will flash very quickly on the F400 while the file is being sent to the unit.
10. When the update has successfully completed a message will be displayed in P-Plus stating that 'Target updated successfully'. Also the F400 will beep and then display the new version number briefly.

If 'Failed: Target not responding' message appears, please check that the Green LED is flashing on the front of the F400. Unplug Mini USB cable from the unit and hold down the DOWN arrow key while plugging the Mini USB cable in again.

If 'couldn't open port' is displayed, try changing the baud rate of you COM port from 9600 to 115200. This can be done by selecting Start > Control Panel > System, then on the Hardware tab select Device Manager. Under Ports, double click mouse on the USB Serial port, and select the Port Settings. The bits per second are where you want to change the settings.



Press ok to save changes. You may need to disconnect your device from the USB port and reconnect.

20. Trouble Shooting

20.1. There is no visual display

Check	Resolution
The Unit is switched on	Press the ENTER key again
The battery is not flat	Recharge the battery using Mini USB cable
If battery is holding charge	Replace the Battery
If you have just changed a battery you may have damaged the battery snap (clip to top of the battery)	Service – send to Apollo Electronics Ltd

20.2. The counter does not "beep" when taking a reading

If it doesn't beep this means the counter does not know where the bottom is - therefore does not record the "plonk"

Check	Resolution
The counter can become un-calibrated if it receives a knock and the cog jumps a notch on the metal shaft	<p>Zero calibrate.</p> <p>To do this, work through the following steps:</p> <ul style="list-style-type: none"> ➤ Switch the unit on by pressing the ENTER key until you hear a beep, and the version number is displayed. ➤ Scroll through the menu items on the F400 using the UP or DOWN arrow keys until you find 'Calibrate'. ➤ Pressing the ENTER key will show the current height. ➤ You will then need to turn the potentiometer until it's calibrated. When it goes down to zero it will mean it is calibrated and the F400 will do 2 short beeps and then display 'Calibrated.' ➤ Turn off then on again when you have finished. ➤ Test the zero calibration by raising the plate and replacing it several times. A beep should sound and the height displayed as the plate falls. If it does not, repeat the steps above and retest. ➤ If a user enters the Calibration menu and it's already at 0, it will double beep and then show Calibrated. ➤ If a user enters the Calibrate Menu and its not calibrated it will do 2 Long Beeps (approx 1 second each). <p>If the calibration fails to hold then the potentiometer, which the cog drives through the shaft is probably faulty and will need replacing. This can occur with excessive wear often compounded by dust and dirt entering the dry bearing. You will need to send the Counter to Apollo Electronics Ltd for service and repair.</p>
Ensure the cog is not slipping on the blue shaft (potentiometer)	Replace the Potentiometer and Cog. Send to Apollo Electronics Ltd for service and repair.

Check	Resolution
The cog has wound off.	Replace - Request a spare cog from Apollo Electronics Ltd.
Potentiometer damaged. The Potentiometer is the blue part that drives the cog. NB: Under no circumstances should you apply CRC or light oil to the potentiometer. It is a dry bearing and any lubricant will render the potentiometer useless).	Send to Apollo Electronics Ltd for service and repair.
Check the metal shaft is coming right back into the base of the black tube. Ensure there is no grass or soil build-up preventing it from doing so. Also check the large washer at the bottom of the shaft is not catching on the bottom of the plate.	Clean the Plate Meter and zero calibrate if required.
Check the cog is running smoothly on the shaft. If the counter is mounted too close to the metal shaft there will be quite a lot of friction when taking a reading. If the counter is mounted too far away from the metal shaft; the cog is liable to jump a notch easily.	Re-assemble the Plate Meter.

20.3. Cog becoming worn

Check	Resolution
Not aligned correctly on the shaft.	Re-align the cog or replace the cog Order from Apollo Electronics Ltd.

20.4. The counter continuously beeps and eventually turns off

Check	Resolution
This is normally due to a low battery. The counter requires a given level of power to operate correctly. If the battery doesn't have sufficient power it may continuously beep to warn you. Remember if you turn the counter off for a few minutes it may recover slightly but the problem will not go away.	<p>Recharge the battery.</p> <p>Battery may be due for replacement.</p> <p>Requires electronic service.</p>

20.5. Error Message displayed >>

Check	Resolution
FRam Error CRC Failed	Please disconnect the USB cable from your Plate Meter, and then reconnect it. You then need to upload the paddocks and Equations to your Plate Meter again.

20.6. Plate Meter not running freely

Check	Resolution
Metal shaft is bent.	Straighten or request a replacement part from Apollo Electronics Ltd.
Grass or soil build-up inside the black tube.	Clean the Plate Meter.
Flutes on steel shaft have become filled with grass or soil.	Clean the Plate Meter.

20.7. Counter Readings do not seem accurate

Check	Resolution
The counter is like a calculator - it does not give false readings under normal circumstances.	Check the equation being used is correct and the calibration has been correctly set. (Zeroed)
<p>Cover Equations</p> <p>In New Zealand there are a number of standard equations published by DairyNZ and Meat & Wool. These reflect regional pasture types. If you wish to change an equation or select alternative species you will need to contact your consultant. Traditionally the equation of height X 158 plus 200 was used however there has been a series of equations produced to reflect changes in pasture types and physiological state (vegetative, flowering, seed head) which can alter DM levels in the paddock.</p> <p>A more accurate calibration can be achieved by taking cuttings or your consultant may be able to advise you on the most appropriate equation for your situation. This particularly applies to pastures under irrigation.</p>	<p>Check what equation you are using. The Equations are configured in your P-Plus Farm Management software and are downloaded to your unit.</p> <p>Please check your unit has been updated with the P-Plus Equations.</p>

20.8. Front Panel (membrane) problems

Check	Resolution
Buttons not clicking or activating.	Service - membrane needs replacing. Send to Apollo Electronics Ltd for service and repair.

20.9. Battery Retainer keeps falling out

Check	Resolution
The counter screws have not been tightened sufficiently.	Make sure the centre screw is re-tightened after the battery is replaced or ensure the battery retainer is properly clicked into place.

20.10. How do I change a formula?

Check	Resolution
<p>The F400 is switched ON and 'Measure' is the displayed option.</p> <p>The correct Paddock has been selected.</p> <p>The Equation assigned to the selected Paddock on the F400.</p> <p>If the Equation needs to be changed for the selected paddock that it is correct and has been saved.</p>	<p>Switch F400 unit ON.</p> <p>Press the ENTER key to show the paddock name. Another Paddock can be selected using the UP and DOWN arrow keys on the front of the unit.</p> <p>Press the ENTER key when the correct Paddock is displayed, to show the assigned Equation.</p> <p>This can be changed using the UP and DOWN arrow keys. Pressing the RIGHT Arrow key will display the A, B and C values for the equation. Press the ENTER key to select the equation for the paddock you are about to take readings in.</p>

20.11. How do I enter my own formula?

Check	Resolution
<p>The Mini USB cable is connected correctly between the F400 and your Computer running P-Plus.</p> <p>'F400 Electronic Plate Meter' is the selected method in P-Plus Pasture Covers.</p> <p>The COM port the cable is plugged into is the same one that is selected when prompted by P-Plus.</p> <p>'Comport is Open' in the F400 communications section in P-Plus Pasture Covers.</p> <p>Paddock data has been uploaded from P-Plus, and required Equation(s) were selected.</p> <p>Did a message saying "Upload Complete" show on P-Plus?</p>	<p>Connect the cable to both the F400 and a spare USB port on your computer.</p> <p>Select the 'F400 Electronic Plate Meter' method in the Pasture Cover in P-Plus.</p> <p>Try selecting another COM port for your USB connection.</p> <p>Try selecting another COM port for your USB connection.</p> <p>Select Upload Paddock data and press Start button in the F400 Communications section of P-Plus. When prompted select the required Equation(s) to transfer.</p> <p>Try the Upload Paddock data process again.</p>

Should you require assistance with setting up your Plate Meter or with installing P-Plus Pasture Covers software, please contact:

Ag Hub - Sales

PO Box 433
Feilding 4740
NEW ZEALAND

Ph 0800 692 448

Fax 06 323 1371

Email sales@aghub.co.nz

www.aghub.co.nz

Ag Hub - Technical Support

Email pplus@aghub.co.nz

A number of papers have been written on various aspects of the use of the Rising Plate Meter. The following references may be of interest to users.

Lincoln University Dairy Farm (LUDF) Fielddays in Dairy Exporter January 2005

Rising Plate Meter Ready Reckoner DEXCEL Pasture Growth & Quality

Pasture production of northern dairy farms. G.J. Piggot, 1997. Proceedings of the New Zealand Grassland Association 59: 103-106 .Refer DairyNZ Website

Talking the same language - a New Standardised System of Pasture Assessment -Norm Thomson, DRC, Robyn Hainsworth and Mark Blackwell - Livestock Improvement Advisory

Same RPM equation all-year if irrigated – Dairy Exporter January 2005.

These papers are available on the DairyNZ website or from the relevant publications.

OTHER PRODUCTS SOLD BY AG HUB

In addition to the Electronic Rising Plate Meter Ag Hub provides other tools for the farmer

*** P-PLUS FARM MANAGEMENT SOFTWARE**

A fully functional farm production and mapping program for detailed farm management information. P-Plus consists of a suite of modules including mapping, paddock, feed forecaster - budget.

The Pasture covers module is provided free with the purchase of either the electronic counter or the electronic rising Plate Meter.

*** AERIAL ULTRA ORTHO FARM MAPPING**

With ever increasing focus on responsible and sustainable land management, an accurate and up to date map is the operating cornerstone of any farming operation. Now Ag Hub can offer the latest in mapping technology. An Ultra Ortho Map combines the benefits of GPS accuracy along with the advantages of the information generated from a highly detailed farm photograph.

*** GPS MAPPING**

Using state of the art equipment, highly accurate farm maps can be drawn with accuracy down to 0.5 metres or less. Features mapped can include fence lines, tracks, shelter, troughs, drainage or any other asset. These maps can provide significant cost savings in terms of fertiliser, spray and cultivation inputs as areas measured are not reliant on contractor estimates.

*** DIGITISED MAPPING**

Digitised photography provides an alternative where accuracy is not as critical. Farm Maps can be drawn off the photos.

*** DESIGN SERVICES – SUBDIVISION**

An existing property may benefit from a well thought out redesign programme. Subdivision or buying a neighbouring property will significantly alter the farms dynamics. Careful layout of paddocks and sizing, water systems and central raceways can make more effective use of land productivity.

*** COMMUNICATION WHITEBOARDS**

Permanent, laser engraved industry management tools for your farm or business. Let Ag Hub create a customised whiteboard incorporating your farm maps or using one of our specially designed work grids. Combine the two and have a management that will create a smoother work flow and greater communication powers for staff or single operators by eliminating mistakes, communicating actions and recording important information. Ideal for the dairy shed, workshop or office.

**NOTE – Services are available in New Zealand Only.
Software may be subject to individual Country licensing arrangements.**

Visit our website www.aghub.co.nz to see more about our products.

P-Plus Farm Management Software Frequently Asked Questions

Here are some of the common questions asked about farming software and what P-Plus can do for your management operation.

What is P-Plus?

P-Plus is an integrated paddock, pasture covers, fertiliser recording, farm mapping, feed budgeting and planning program. It is a modulated software package where each module can be stand alone for a specific area of farming or can be integrated (run together) with more than one module. Thus information entered once is available directly within other modules.

P-Plus suits a full range of farming systems, types and sizes. There are two packages available, P-Plus *Professional* and P-Plus *Farm*.

- P-Plus *Professional* is recommended for users who wish to manage multiple farms in the one system. The licence allows a maximum of 5 farms per licence.
- P-Plus *Farm* is recommended for users with one farm.

What Farming Types can we use the program for?

Any farming activity can be accommodated including dairy, sheep, beef, deer, goats. Dairy farmers find P-Plus specifically suits their needs, as the Pasture Cover module links very well in with their map, thus giving a visible display of the pasture availability. The Pasture Cover module includes a feed wedge and grazing round report to simplify your grazing planning. Most dairy farmers who have purchased the Map and Paddock modules to begin with, later purchase the Feed Forecaster Budget and stock modules to complete their farm management system.

How many modules are there and what are they?

There are four key sales modules and three minor modules. The minor modules are incorporated in the key sales modules.

The modules are:

Map & Paddock (includes Weather and Pasture Cover)

Map – this enables you to utilise a GPS map, an aerial photo or an existing map. You can create maps, measure paddocks, alter fences, plus create a host of layers of information including drainage, water supply, trees, and physical features such as contours, soils and productive areas. You can load GPS data (some conditions apply), or images that are in a jpg or bmp file format.

Paddock– monitor fertiliser and pesticide applications plus any activity associated with paddocks including cash inputs and outputs.

Pasture Cover – for recording pasture covers from Plate Meters and other measuring devices; to provide covers over time, growth rates and feed wedges. This is provided free with any purchase of the Ag Hub Electronic Rising Plate Meter or the Feed Reader. Pasture Cover also runs as a standalone module for those only wanting to record their pasture cover details.

Feed Forecaster - Budget– for dairy, sheep, beef and deer. This enables daily, weekly, and annual budgeting. Farmers can proactively anticipate and therefore more effectively manage their feed plan and requirements. (Includes Weather and Pasture Cover modules)

Computer Specifications

What size computers will P-Plus operate on and what version of Windows do I require?

We recommend the following computer specification for P-Plus:

- Operating system: Windows ME, 2000®, XP®, **windows 7** or Vista® (32 bit only)
- CPU: 1.00GHz
- RAM / Memory: 256MB minimum – recommend 512MB, 1GB (Vista)
- CD ROM Drive DVD/CD –RW combo drive
- Monitor: SVGA
- Windows compatible mouse.
- Windows compatible printer.
- Internet and email Access for licensing and support

Note that the software will operate on lower specification PCs, however processing will be slower and some will struggle to manage the large map or aerial photo files. If in doubt, contact Ag Hub to discuss.

Note: P-Plus Pasture Cover will run adequately on Windows 95 (release 2) or Windows 98 as a standalone package.

How do I find out the specification of my current PC?

Follow these steps:

1. Go to 'Control Panel
2. Select 'System'
3. Select the 'General' tab that will display the following details:
 - System – i.e. Details of the operating system, e.g. Windows XP
 - Registration – i.e. who the operating system is registered to, Jo Blogg
 - Computer – the computer specification, CPU type / size and RAM / Memory

If you are not sure about your computer configuration, get in touch with the dealer who sold you the computer and ask them to confirm your exact configuration.

What benefits are there in using the software?

You have the ability to record daily activities of stock movements, pasture, feed budgeting, plan subdivisions, measure pastures, fence lines, drains etc, plus maintain a record of revenues and costs. Maps provide an excellent communication medium for staff and contractors, which can be printed out for distribution.

With quality assurance and auditing needs P-Plus has significant advantages. The Feed Forecaster-Budget module allows you to proactively manage your feed situation rather than waiting until you are on top of a feed issue. Simply email our support team and they will assist you.

What management decisions can we make utilising the software?

Depending on the module you use, you can do a number of regular operations -

- Pasture cover reporting in conjunction with your Plate Meter or Feed Reader.
- Produce grazing rounds for dairy farms or intensive beef operations.
- Prepare feed budgets, daily, weekly, yearly.
- Plan fertiliser applications to minimise over ordering
- Plan new fence lines, build farm maps, water systems, drainage systems etc.
- Provide contractors with property details for fertiliser or pesticide applications

What special features does P-Plus offer?

- P-Plus can directly import GPS maps generated through our GPS mapping service as well as other line features such as soils and contours, referred to as shape files.
- Garmin GPS60 handheld units can be used to create a map of your farm, or to draw new features on your farm map.
- The Feed Forecaster-Budget is easy to configure and use with all the complexity behind the scenes.
- Integration with the C-DAX Rapid Pasture Meter is available via Bluetooth.
- Integration with the Ag Hub downloadable Plate Meters F300 and F400 via USB.
- All modules can be standalone or integrated into one system, as required. You do not have to purchase the full program.
- Integration with the Ag Hub Feed Reader.

What do I have to do to get started with P-Plus?

We can send you a demonstration disk or you can download P-Plus from our website. All the modules will be enabled for a trial period of 30 days. Prior to the end of this period you will need to purchase the relevant modules before you can continue using the software. The new modules cannot be registered until Ag Hub has received and processed payment for them. Any data you have entered during the trial period will be available for you to continue with after registration is complete.

If Ag Hub have drawn a farm map for you, for a small fee we can load the map file into the demonstration version so that you can evaluate the software as it relates to your property.

Where do I get an Aerial Photo?

If you choose to draw your farm map you may need an aerial photo. There are a number of aerial photo suppliers. You can get colour aerial photos from Terra-link or NZ Aerial Mapping. Ag Hub can fly your farm and provide a digital farm photo. Contact the Ag Hub Sales Team if you are interested in this option.

Can I connect a handheld GPS device to P-Plus?

Yes you can. P-Plus communicates with the Garmin Etrex Legend, Garmin GPS 72, Garmin GPS 76, Garmin GPS 60, and Garmin GPS 60MAPCSx. This will allow you to take waypoints on every fence post on your property then simply join the dots in P-Plus to create your farm map.



PO Box 433, Feilding 4740, New Zealand
F +64 6 323 1371 E sales@aghub.co.nz

0800 MYAGHUB (0800 692 448) • www.aghub.co.nz

