



SPRING//SUMMER 2020

Tyler Ellis
TYLER ELLIS®



Photograph by Ari Michelson



ABOUT THE DESIGNER

Tyler Ellis, the daughter of revered fashion designer Perry Ellis, channels her fascination for traveling into an endless current of inspiration. Her eponymous handbag line is defined by an array of luxe materials and intricate details that embody her worldly palette. Brought to life in a father/son owned and operated atelier outside of Florence, Italy, Tyler Ellis handbags represent an ardent commitment to couture and quality craftsmanship that has earned a cult following. The designs look equally at home on the red carpet as well as in everyday life and are carried by influential women worldwide.



PIUMA ROAD

SPRING // SUMMER 2020

Nestled in the heart of Malibu Canyon, Piuma Road embodies southern California's laidback roots while exuding the romantic and timeless feeling of a bygone era. With views from the Santa Monica mountains leading all the way down to the Pacific, this idyllic coastline stretch is home to spectacular rolling hills, charming farmhouses and Saddle Peak Lodge, the iconic getaway dating back to the 1950s, where legendary movie stars would go to indulge in life's passions. The region radiates an understated elegance—paired with a hint of irreverence—which Tyler Ellis brings to life in her Spring // Summer 2020 campaign.

The rugged desert landscape emboldens the rich Italian leathers with hues reminiscent of the morning sky, the electrifying lizard hides and the supple snakeskins, which Tyler flawlessly pairs with her classic shapes. The dramatic juxtaposition of textures and colors highlights the rarefied beauty of each design—eternal jewels that will last a lifetime, and more.





JANE SADDLE
in Electric Rose Lizard

The Jane is designed with a rounded three-quarter front flap, a magnetic snap closure and our custom infinity bar. It has a hidden exterior pocket, an optional cross-body strap, interior pockets and features our signature Thayer Blue lining.





STELLA HANDBAG

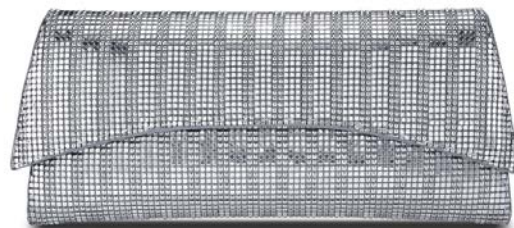
*In Grey Bombe Alligator,
Blush Leather & Electric Rose Lizard*

The Stella is a semi-structured tri-compartment handbag with a magnetic closure and an optional cross-body strap. It has interior pockets and features our signature Thayer Blue lining.



Personal Touch • Timeless Appeal • Everlasting Luxury

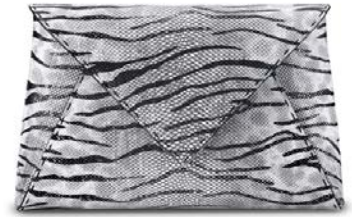




VERONICA CLUTCH
In Starfish Python & Silver Chainmail

The Veronica is designed with a three-quarter front flap and a magnetic snap closure. The rounded back provides additional internal space. It fits the iPhone 8+ and has a hidden back pocket, an optional chain and features our signature Thayer Blue lining.





LEE POUCHET
in Tiger Karung

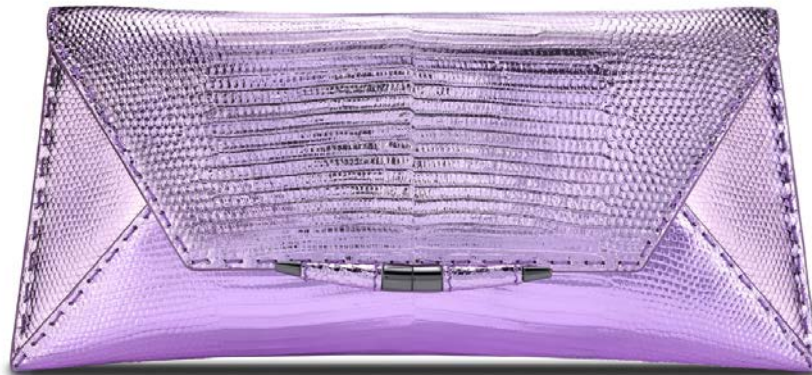
The Lee is an envelope-shaped clutch designed with a triangular front flap and a magnetic snap closure. It fits the iPhone 8+ and has a hidden exterior pocket, an optional cross-body chain and features our signature Thayer Blue lining.



AIMEE CLUTCH

In White Alligator





AIMEE CLUTCH

In White Alligator & Electric Rose Lizard

The Aimee is designed with a three-quarter front flap, a magnetic snap closure and our custom infinity bar. It fits the iPhone 8+ and has a hidden exterior pocket, an optional cross-body chain and features our signature Thayer Blue lining.



Personal Touch • Timeless Appeal • Everlasting Luxury



POPPY POUCH

In Off-White Ostrich Feathers & Satin

The Poppy is a soft pouch designed with a custom Lucite top-handle and metal-framed pinecone closure. It fits the iPhone 8+, has an optional chain and features our signature Thayer Blue lining.



Personal Touch • Timeless Appeal • Everlasting Luxury





PERRY CLUTCH

*In Starfish Python
& Silver Fine Mesh Swarovski*

The Perry is a hard-framed clutch designed with interior pockets and an optional cross-body chain. It's elegant emerald shape is inspired by Tyler's own engagement ring and named after her father, Perry Ellis. It fits the iPhone 8+ and features our signature pinecone closure and Thayer Blue lining.





RITA HANDBAG

in Santorini Leather

The Rita is a semi-structured handbag with a triangular front-flap and our custom spear-lock closure. It is designed with a flexible top handle and an optional chain with a leather accent. It has a hidden back pocket, interior zipper pocket and features our signature Thayer Blue lining.



GRACE POUCH

In Blush Leather

The Grace is a soft pouch with a detachable handle / shoulder strap. It fits the iPhone 8+ and features our signature Thayer Blue lining.



Personal Touch • Timeless Appeal • Everlasting Luxury



LJ HANDBAG
*in Santorini Leather,
White Bombe Alligator,
Clear PVC & Off-White Leather*

The LJ is a semi-structured handbag with a triangular front-flap and our custom spear-lock closure. It is designed with a top handle, handmade whipstitch detail and an optional chain. It has a hidden back pocket, interior pockets and features our signature pinecone feet and Thayer Blue lining.





LILY CLUTCH

*In Tiger Karung
& Glitter Medley Plexi*

The Lily is a hard-framed rectangular clutch designed with interior pockets and an optional cross-body chain. It fits the iPhone 8+ and features our signature pinecone closure and Thayer Blue lining.





CAROLINE TOTE

In White Alligator

The Caroline is a semi-structured tote with a zipper closure that showcases our pinecone pull. It is designed with our internal super pocket and zippered pocket, two hidden exterior pockets, an optional cross-body strap, a computer slot and features our signature pinecone feet and Thayer Blue lining.





LO TOTE

In Off-White & Santorini Leather

The LO is a semi-structured double-handled tote designed with our handmade whipstitch detail and our custom hook closure. It has an internal zipper pocket, an extra-long key-fob and features our signature pinecone feet and Thayer Blue lining.



Personal Touch • Timeless Appeal • Everlasting Luxury



Hyle Ellis[®]

SIGNATURE HARDWARE



Top Left: Continuum closure // Top Right: Pinecone closure
Bottom Left: Infinity bar // Bottom Right: Spear-lock closure



SS20 EXCLUSIVE MATERIALS



OFF-WHITE
LEATHER

WHITE
BOMBE
ALLIGATOR

GREY
BOMBE
ALLIGATOR

ELECTRIC
ROSE
LIZARD

STARFISH
PYTHON

TIGER
KARUNG

SANTORINI
LEATHER

BLUSH
LEATHER

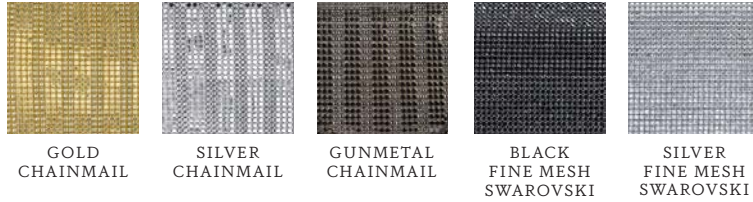
OSTRICH
FEATHERS

METALLIC
PLUM MARBLE
PLEXI

GLITTER
MEDLEY
PLEXI

CLEAR
PVC

CHAINMAIL & FINE MESH SWAROVSKI



GOLD
CHAINMAIL

SILVER
CHAINMAIL

GUNMETAL
CHAINMAIL

BLACK
FINE MESH
SWAROVSKI

SILVER
FINE MESH
SWAROVSKI

CRUSHED VELVET



PISTACHIO

FLAMINGO

METALLIC
ROSE

PINK
LEMONADE

ROYAL
PURPLE

SAPPHIRE

NAVY BLUE

BOHEMIAN
EMERALD

DEEP GARNET

TRUFFLE

ANTIQUÉ
BRONZE

PLATINUM

WEDDING
WHITE

BAG DIMENSIONS

AIMEE CLUTCH
11" X 5" X 1"

LEE POUCHET
SMALL: 8" X 5" X 2"
LARGE: 11" X 6.5" X 2"

PERRY CLUTCH
SMALL: 8" X 5" X 2"
LARGE: 10" X 5" X 2"

CAROLINE TOTE
22" X 12" X 7.5"

LILY CLUTCH
8.5" X 5.5" X 2"

POPPY POUCH
12" X 8.5" X 5"

GRACE POUCH
6" X 8.5" X 6"

LJ HANDBAG
SMALL: 9" X 8.75" X 3.5"
LARGE: 13.5" X 12.5" X 5.5"

RITA HANDBAG
7.25" X 6" X 3"

JANE SADDLE
8" X 5.5" X 2.5"

LO TOTE
18.25" X 12" X 5"

STELLA HANDBAG
9" X 7.5" X 5"

VERONICA CLUTCH
11" X 5" X 2"

HARDWEAR OPTIONS

GOLD // SILVER // ROSE GOLD // GUNMETAL



Hyle Ellis
SPOTTED



ALLISON JANNEY
LILY CLUTCH



ANNE HATHAWAY
LEE POUCHET



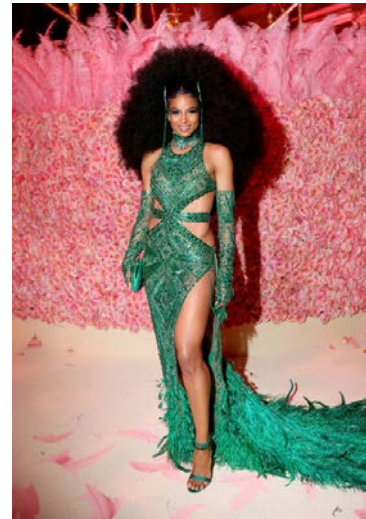
CATE BLANCHETT
IVY TOTE



CHANEL IMAN
GRACE POUCH



CHARLOTTE TILBURY
PERRY CLUTCH



CIARA
PERRY CLUTCH



ELISABETH MOSS
LEE POUCHET



HEIDI KLUM
PERRY CLUTCH



FELICITY JONES
LEE POUCHET



GABRIELLE UNION
GRACE POUCH



GEMMA CHAN
LEE POUCHET



GIGI HADID
AVA BOX



ROSIE HUNTINGTON-WHITELEY
LEE POUCHET



HELEN MIRREN
PERRY CLUTCH



HILARY SWANK
PERRY CLUTCH



JAIME KING
AIMEE CLUTCH



JENNIFER LOPEZ
PERRY CLUTCH



JESSICA BIEL
PERRY CLUTCH



JULIA ROBERTS
AIMEE CLUTCH



KACEY MUSGRAVES
PERRY CLUTCH



KATIE HOLMES
PERRY CLUTCH



KERRY WASHINGTON
VERONICA CLUTCH



OPRAH WINFREY
LILY CLUTCH



LILY COLLINS
LILY CLUTCH



LUCY LIU
GRACE POUCH



LUPITA NYONG'O
LEE POUCHET



MARTHA HUNT
LEE POUCHET

TYLER ELLIS

TYLERELLIS.COM

@TYLERELLISOFFICIAL

CONTACT@TYLERELLIS.COM

+1 (212) 956-7287

U.S. SALES

JANE SHRINER

JANE@TYLERELLIS.COM

U.S. PRESS

PRESS@TYLERELLIS.COM

U.K. PRESS

ALEX SHAH

AS@ALEXSHAH.CO.UK