



SPRING/SUMMER 2018

Hye Ellis



SOHO COLLECTION SPRING/SUMMER 2018

Tyler found inspiration in the iconic early 90s of SoHo, New York. Drawn to unique and bold materials, she designed a collection with a striking feminine and distinguished style. Working closely with world-renowned stylist, Barbara Martelo, they crafted a campaign to honor the simple, yet strong and elegant era.

ABOUT THE DESIGNER

Tyler Ellis, the daughter of revered fashion designer Perry Ellis, harnesses her jet-setting lifestyle into an endless current of inspiration. Her eponymous handbag line is defined by the array of luxe exotic materials and details of lasting function that embodies her worldly palette. Launched in New York in 2011, the company is now based in Los Angeles, where Tyler grew up and currently resides. As a personal homage to her father, Perry Ellis' handwriting appears on the company logo; and most dear to Tyler, it is included within each and every one of her designs.

Tyler Ellis creates luxurious and modern, yet timeless handbags. Her fresh interpretations of classic silhouettes are brought to life in Florence, Italy, where they are handmade by some of the world's top artisans. Marrying the finest materials such as plonge leather, crushed velvet, ostrich leg, python and alligator with a sharp aesthetic, each handbag represents an ardent commitment to couture and quality craftsmanship that has earned Tyler a cult following. Her designs look equally at home on the red carpet and in everyday life, and are carried by influential women worldwide.



AIMEE CLUTCH

The Aimee Clutch is designed with a front flap clasp, hidden exterior pocket, interior divider, and optional cross-body chain. It features our infinity bar closure and signature "Thayer Blue" satin lining.



AIMEE ROUND

SMALL/LARGE

The Aimee Round is designed with a front flap clasp, hidden exterior pocket, interior divider, and optional cross-body chain. It features our infinity bar closure and signature "Thayer Blue" satin lining.





PERRY CLUTCH

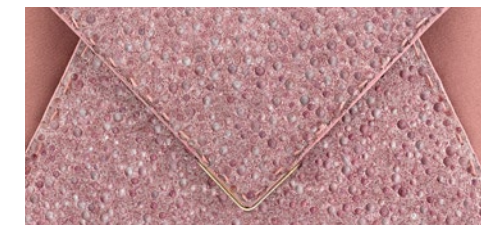
The Perry Clutch is an emerald shaped clutch with a detachable cross-body chain. It features interior pockets and our signature "Thayer Blue" satin lining and pinecone closure.



LEE POUCHET

SMALL/LARGE

The Lee Pouchet is designed with a triangular front flap closure, hidden exterior pocket, interior divider, optional cross-body chain, and features our signature "Thayer Blue" satin lining.





LILY CLUTCH

The Lily Clutch is a rectangular shaped, hard clutch with a detachable cross-body chain. It features interior pockets and our signature "Thayer Blue" satin lining and pinecone closure.





DEBI BACKPACK

The Debi is a semi-structured backpack with a top flap and drawstring closure. It's designed with a zip around bottom storage compartment and adjustable shoulder straps. It features our signature spear-lock closure and "Thayer Blue" suede lining.



CANDY CLUTCH

SMALL/MEDIUM

The Candy Clutch is designed with a three-quarter front flap, hidden back pocket, internal zip pocket, and a detachable cross-body chain. It features our infinity bar closure and signature "Thayer Blue" satin lining.





JAMIE DOCTOR

SMALL/MEDIUM

The Jamie Doctor is a double handle, structured bag, with an optional cross-body strap, and interior pocket. It features our signature slide-lock closure, pinecone feet and "Thayer Blue" suede lining. Metal tab can be engraved.



JAMIE CLUTCH

The Jamie Clutch is a structured square clutch, with an optional cross-body chain, interior pocket and features our slide-lock closure and signature "Thayer Blue" satin lining. Metal tab can be engraved.





ANJULI CLUTCH

The Anjuli is a structured oval clutch, with an optional cross-body chain, and interior pocket. It features our signature slide-lock closure and "Thayer Blue" satin lining. Metal tab can be engraved.



LJ TOTE

SMALL/LARGE

The LJ is a cross-body bag, with a front flap and our signature spear-lock closure. It's designed with a hidden back pocket, interior pockets, detachable strap, our signature pinecone feet and "Thayer Blue" suede lining.





AVA BOX

The Ava Box is a rectangular hard clutch, with a detachable cross-body chain. It's designed with interior pockets and a mirror. It features our signature pinecone closure and "Thayer Blue" leather lining.



KELLY BOX

The Kelly Box is a hard framed, vertical cross-body bag. It features an interior mirror, card slots and our signature pinecone closure.



CAROLINE TOTE

The Caroline is a semi-structured tote with built-in phone charging capabilities, two hidden exterior pockets, internal zippered pocket, credit card slots and a detachable cross-body strap. It features our signature "Thayer Blue" satin lining and pinecone feet. Metal tab can be engraved.



HELENA TOTE MEDIUM/LARGE

The Helena is a tri-compartment, double-handle structured tote. It is designed with a center zip-pocket, phone and credit card slots, an extra-long key fob and detachable cross-body strap. It features our signature infinity bar and "Thayer Blue" suede lining.



BOFF BOX

The Boff Box is a hard framed hexagon, carried as a vertical cross-body bag. It features an interior mirror, card slots and our signature spear-lock closure.



JANE SADDLE

SMALL/LARGE

The Jane Saddle has a rounded three-quarter magnetic front flap, attached shoulder strap, a hidden exterior pocket, and multiple interior pockets. It features our infinity bar closure and signature "Thayer Blue" suede lining.



MINDY BOX

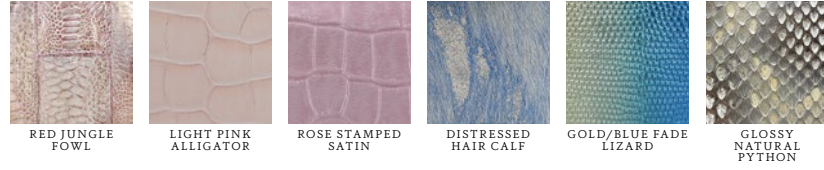
The Mindy Box is a rectangular hard clutch, with a detachable cross-body strap. It's designed with interior pockets and a mirror. It features our signature spear-lock closure and "Thayer Blue" leather lining.



TYLER ELLIS

MATERIALS

SS18 EXCLUSIVES



SWAROVSKI CRYSTALS



VELVET & CRUSHED VELVET



MARBLED PLEXI



SIGNATURE PLONGE LEATHER



HARDWARE OPTIONS

GOLD/SILVER/ROSE GOLD/GUN METAL
LAVENDER/RED/GREEN & BLUE/GREEN

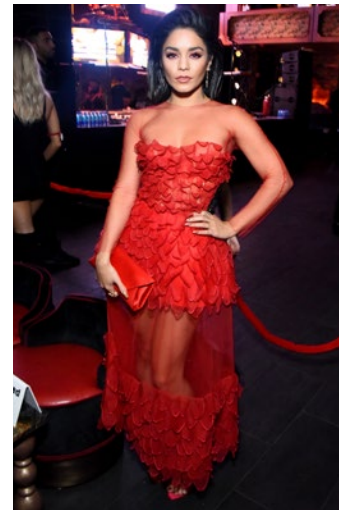




KATE MARA
PERRY CLUTCH



AUBREY PLAZA
LEE POUCHET



VANESSA HUDGENS
AIMEE ROUND



ELLE FANNING
CANDY CLUTCH



KIRSTEN DUNST
PERRY CLUTCH



JULIA ROBERTS
AIMEE ROUND



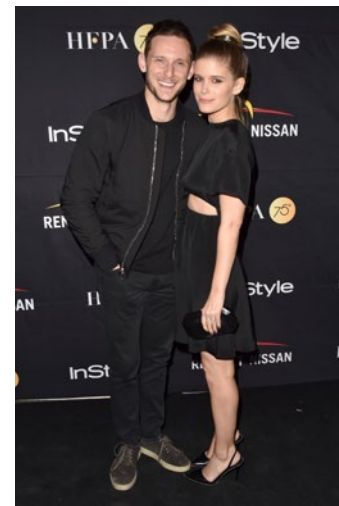
REESE WITHERSPOON
PERRY CLUTCH



NINA DOBREV
CANDY CLUTCH



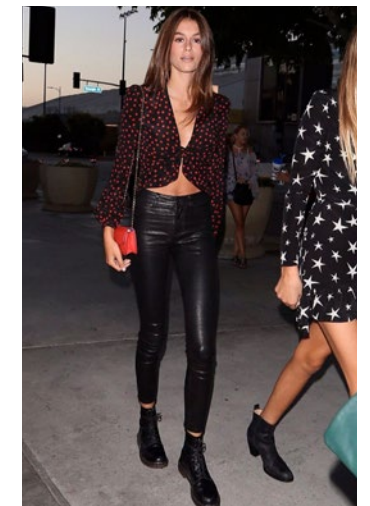
EMMA STONE
JAMIE CLUTCH



KATE MARA
PERRY CLUTCH



EMILY BLUNT
ALEX WALLET



KAIA GERBER
CANDY CLUTCH



DEMI MOORE
LEE POUCHET



ELISABETH MOSS
LEE POUCHET



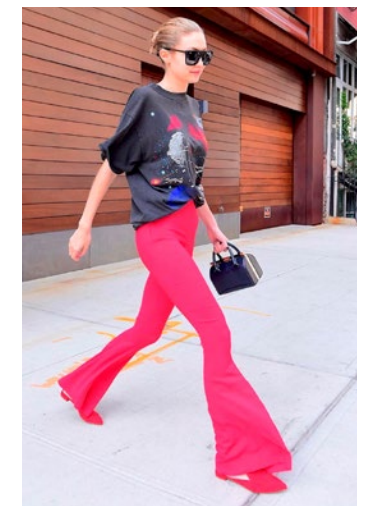
MADELAINE PETSCH
AIMEE CLUTCH



OCTAVIA SPENCER
AIMEE ROUND



KARLIE KLOSS
LILY CLUTCH



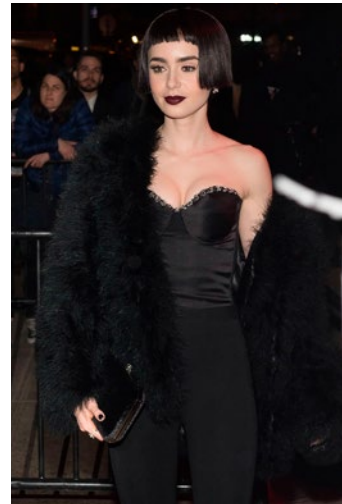
GIGI HADID
JAMIE DOCTOR BAG



GIGI HADID
LILY CLUTCH



COURTNEY LOVE
LEE POUCHET



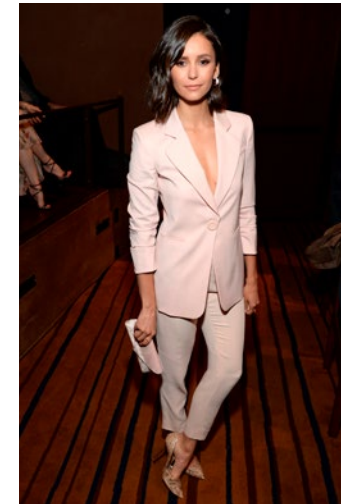
LILY COLLINS
LILY CLUTCH



JAIME KING
CANDY CLUTCH



KARLIE KLOSS
LILY CLUTCH



NINA DOBREV
LEE POUCHET



LUCY HALE
LOU CROSSBODY



SUKI WATERHOUSE
PERRY CLUTCH



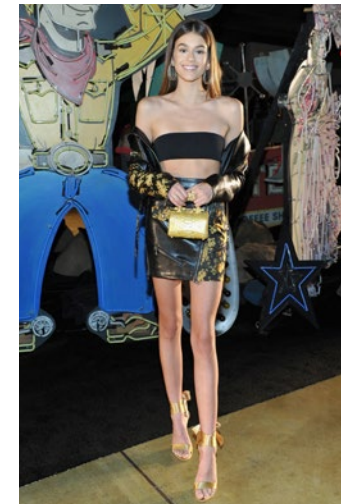
HOLLAND RODEN
LEE POUCHET



JENNY SLATE
LEE POUCHET



LEAH REMINI
LEE POUCHET



KAIA GERBER
JAMIE DOCTOR BAG



VIOLA DAVIS
PERRY CLUTCH



SARAH PAULSON
LILY CLUTCH



POM KLEMENTIEFF
LEE POUCHET



MANDY MOORE
LILY CLUTCH



LILI REINHART
LILY CLUTCH



OLIVIA WILDE
LEE POUCHET

