

Lyle Alexandra

LE MOUVEMENT



LE MOUVEMENT
FALL/WINTER 2016

ABOUT TYLER ALEXANDRA

TYLER'S DESIGNS -MODERN INTERPRETATIONS OF CLASSIC SILHOUETTES- ARE BROUGHT TO LIFE IN FLORENCE BY THE WORLD'S TOP ARTISANS. MARRYING ULTRA LUXE MATERIALS- LIKE OSTRICH LEG, RASPO, COBRA AND ALLIGATOR- TO A SHARP AESTHETIC, EACH HANDBAG REPRESENTS AN ARDENT COMMITMENT TO COUTURE, QUALITY CRAFTSMANSHIP.

ABOUT TYLER ELLIS

TYLER IS A LOVER OF TRAVEL, HISTORY, WINE AND GOLF. SHE RESIDES BETWEEN LOS ANGELES AND NEW YORK, WITH HER HUSBAND, BEN, AND THEIR TRIO OF PUPS, BAILEY, BELLA, AND BRUNI.



I strive to create classic, timeless accessories.
From my signature "Trayer Blue" lining,
to my pinecone inspired hardware,
every design is intentionally a harmony
of function and fashion
creating a luxury handbag experience.



TYLER ALEXANDRA "THAYER BLUE" LINING IS A SIGNATURE FEATURE IN EACH BAG AND CLUTCH.

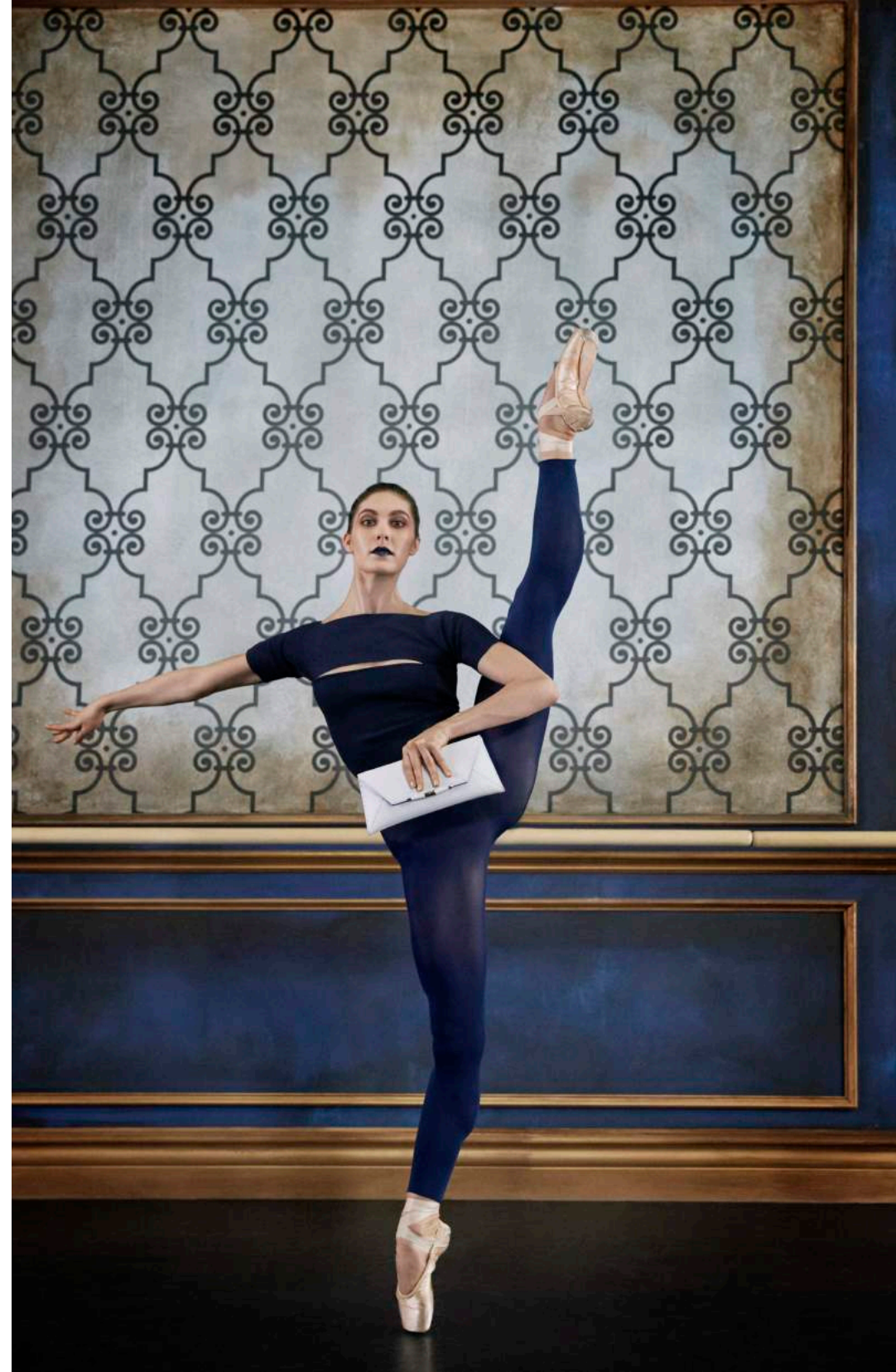




TYLER ALEXANDRA COLLECTION

AIMEE CLUTCH

THE AIMEE CLUTCH WITH A MAGNETIC FOLD-OVER FRONT FLAP, A HIDDEN BACK POCKET, OPEN INTERIOR POCKET AND A DETACHABLE CROSS BODY CHAIN, WITH "THAYER BLUE" SATIN LINING. OPTIONAL TOP HANDLE.



AIMEE CLUTCH: LARGE





LEE CLUTCH

THE LEE IS A SEMI-STRUCTURED CLUTCH FEATURING A MAGNETIC FOLD-OVER ENVELOPE FRONT FLAP, A HIDDEN BACK POCKET, AND A DETACHABLE CROSS BODY CHAIN, WITH "THAYER BLUE" SATIN LINING.



LEE CLUTCH: LARGE/MEDIUM/MINI



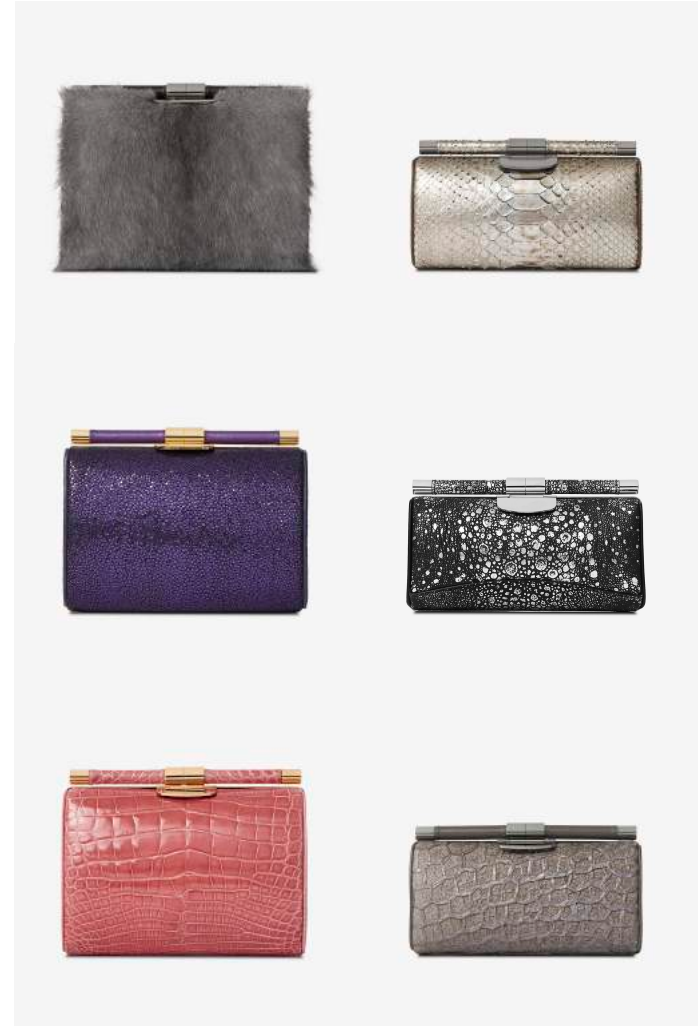


ANJULI FRAMED CLUTCH

THE ANJULI IS AN OVAL SHAPED, FRAMED CLUTCH WITH A TOP SLIDE LOCK CLOSURE, TWO INSIDE POCKETS, AND A DETACHABLE CROSS BODY CHAIN, WITH "THAYER BLUE" SATIN LINING. METAL TAB CAN BE MONOGRAMMED.



ANJULI FRAMED CLUTCH: MEDIUM/SMALL

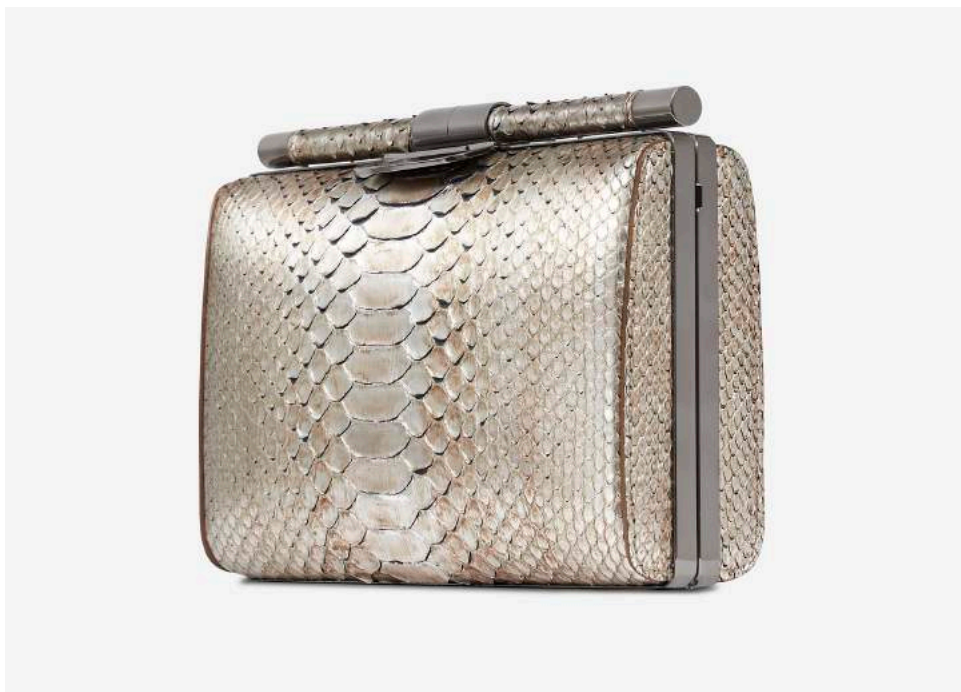


JAMIE FRAMED CLUTCH

THE JAMIE IS A FRAMED CLUTCH WITH A TOP SLIDE LOCK CLOSURE, TWO INSIDE POCKETS, AND A DETACHABLE CROSS BODY CHAIN, WITH "THAYER BLUE" SATIN LINING. METAL TAB CAN BE MONOGRAMMED.



JAMIE FRAMED CLUTCH: LARGE/MEDIUM





LAURA JANE

THE LAURA JANE IS A SEMI-STRUCTURED BAG, FEATURING A FRONT SNAP CLOSURE, A TOP HANDLE, WITH AN INTERIOR POCKET, A HIDDEN BACK POCKET, AND A DETACHABLE CROSS BODY STRAP, WITH "THAYER BLUE" SATIN LINING AND PINECONE FEET.

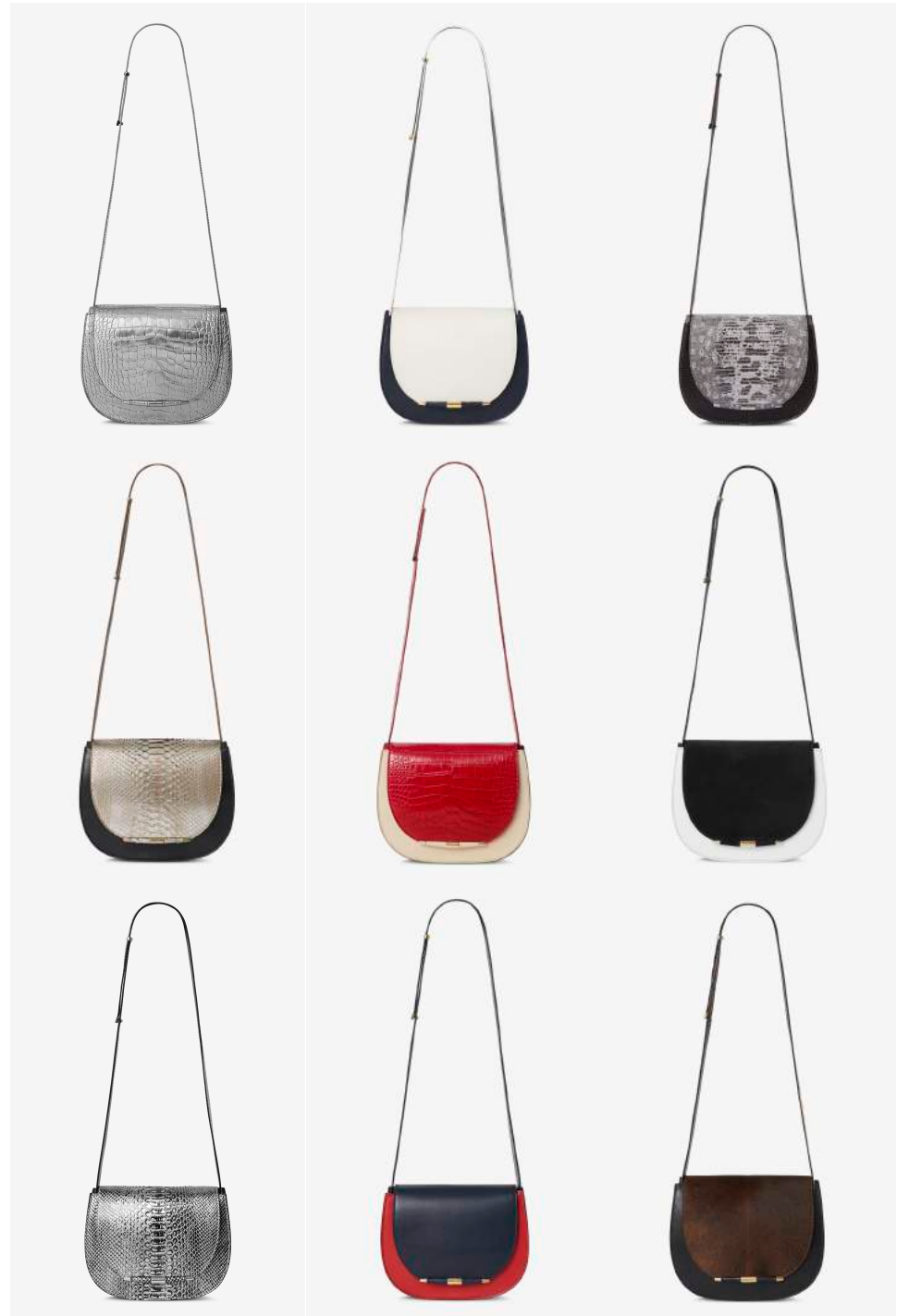


JANE SADDLE

THE JANE SADDLE IS A SEMI-STRUCTURED SHOULDER BAG FEATURING A MAGNETIC SNAP, FOLD-OVER THREE-QUARTER FRONT FLAP, AND THREE ADDITIONAL INTERIOR POCKETS, WITH "THAYER BLUE" SATIN LINING. OPTIONAL TOP HANDLE.



JANE SADDLE: MEDIUM/LARGE



AMANDA SHOULDER

THE AMANDA IS A SHOULDER BAG FEATURING A MAGNETIC SNAP, FOLD-OVER ENVELOPE FRONT FLAP, A HIDDEN BACK POCKET, ZIPPERED AND OPEN INTERIOR POCKETS AND A CROSS BODY CHAIN, WITH "THAYER BLUE" SATIN LINING.



BRUNI TOTE

THE BRUNI IS A STRUCTURED BAG, FEATURING A TOP ZIPPERED CLOSURE, AN ADDITIONAL PUSH LOCK BOTTOM COMPARTMENT FOR EXTRA STORAGE, AND A DETACHABLE CROSS BODY STRAP, "THAYER BLUE" SUEDE LINING, AND PINECONE FEET. METAL TAB CAN BE MONOGRAMMED.



JAMIE FRAMED DOCTOR BAG

THE JAMIE IS A FRAMED BAG WITH A TOP SLIDE LOCK CLOSURE, TWO INTERIOR POCKETS, DETACHABLE CROSS BODY STRAP, "THAYER BLUE" SUEDE LINING, AND PINECONE FEET. METAL TAB CAN BE MONOGRAMMED.



MINDY TOTE

THE MINDY IS A SEMI-STRUCTURED TOTE WITH BUILT-IN PHONE CHARGING CAPABILITIES IN PARTNERSHIP WITH EMPOWERED, TWO HIDDEN EXTERIOR POCKETS, INTERNAL ZIPPERED POCKET, CREDIT CARD SLOTS AND A DETACHABLE CROSS BODY STRAP, "THAYER BLUE" SUEDE LINING, AND PINECONE FEET. METAL TAB CAN BE MONOGRAMMED.



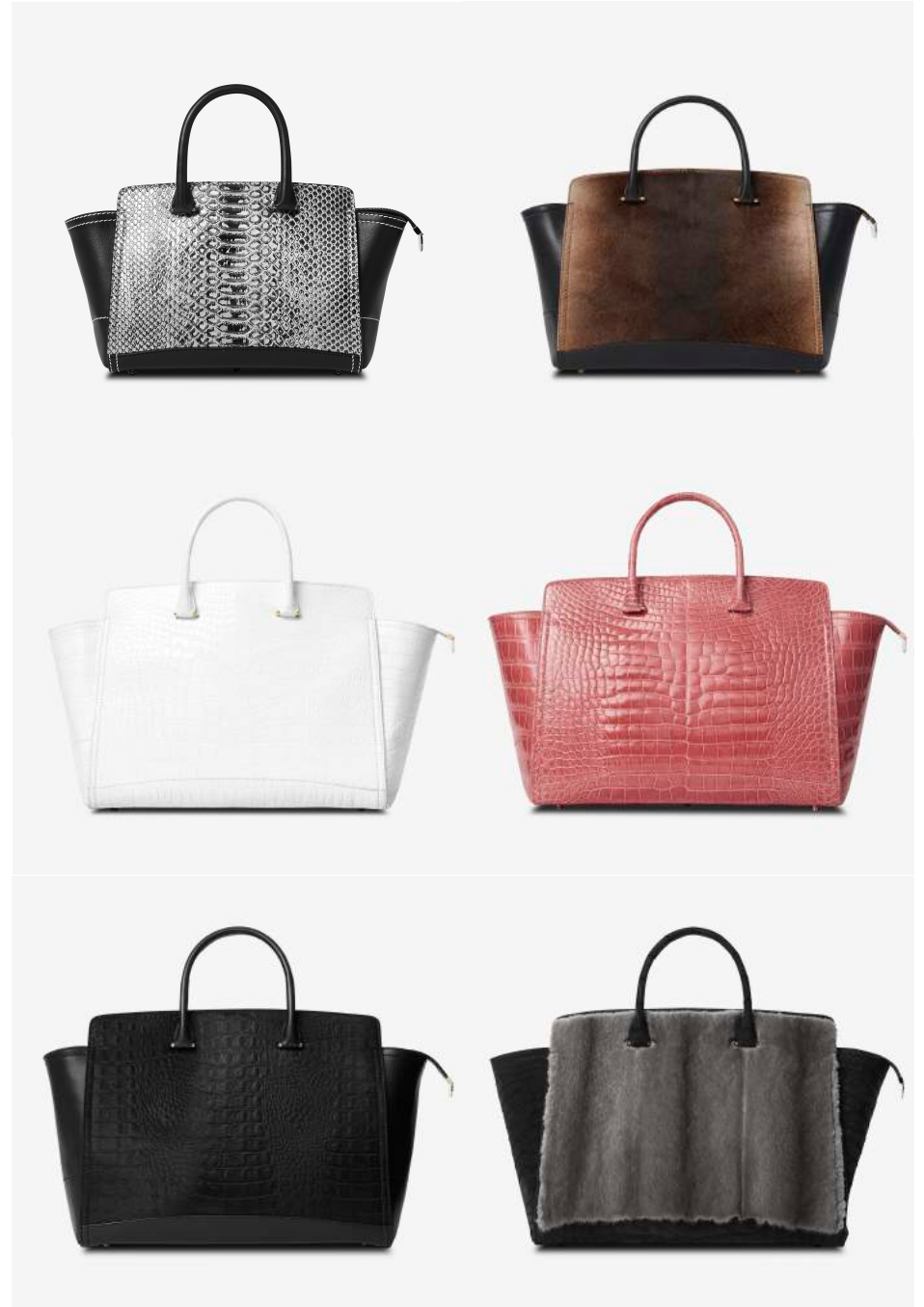


CAROLINE TOTE

THE CAROLINE IS A SEMI-STRUCTURED TOTE WITH BUILT-IN PHONE CHARGING CAPABILITIES IN PARTNERSHIP WITH EMPOWERED, TWO HIDDEN EXTERIOR POCKETS, INTERNAL ZIPPERED POCKET, CREDIT CARD SLOTS AND A DETACHABLE CROSS BODY STRAP, WITH "THAYER BLUE" SATIN LINING AND PINECONE FEET. METAL TAB CAN BE MONOGRAMMED.



CAROLINE TOTE: MEDIUM/LARGE



ANJULI CLUTCH: SMALL

ESTABLISHED COLLABORATION

THE ANJULI IS AN OVAL SHAPED, FRAMED CLUTCH WITH A "TORPEDO" SLIDE LOCK CLOSURE, TWO INSIDE POCKETS, AND A DETACHABLE CROSS BODY CHAIN, WITH "THAYER BLUE" SATIN LINING.



ESTABLISHED COLLABORATION

THE ANJULI IS AN OVAL SHAPED, FRAMED CLUTCH WITH A "TORPEDO" SLIDE LOCK CLOSURE, TWO INSIDE POCKETS, AND A DETACHABLE CROSS BODY CHAIN, WITH "THAYER BLUE" SATIN LINING.



ANJULI CLUTCH: MEDIUM





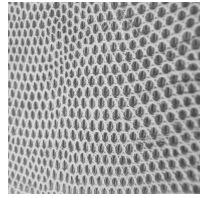
EXOTIC SKIN OPTIONS



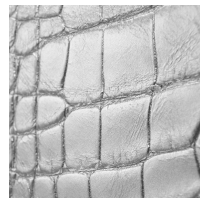
METALLIC BLUE LIZARD



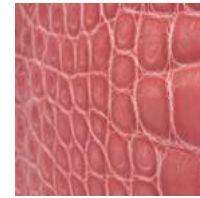
NATURAL BLUE LIZARD



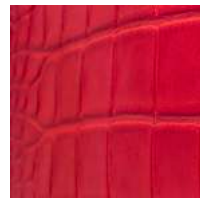
GREY LIZARD



SILVER ALLIGATOR



ROSE ALLIGATOR



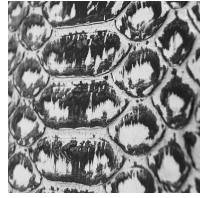
RED ALLIGATOR



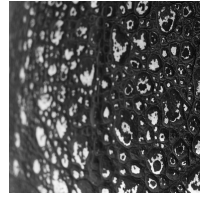
BRONZE PAINTED PYTHON



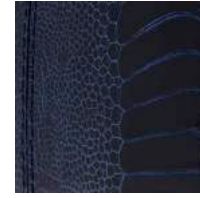
METALLIC PEWTER PYTHON



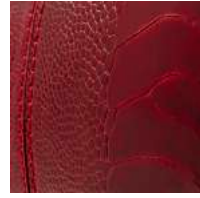
METALLIC BLACK/SILVER PYTHON



BLACK/SILVER TOAD



DEEP BLUE OSTRICH LEG



DEEP RED OSTRICH LEG



NATURAL BROWN HAIR CALF



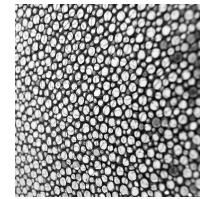
BRONZE PAINTED PYTHON



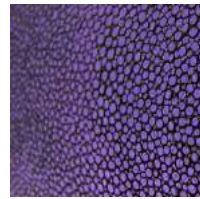
NAVY/SILVER FISH



PEWTER FISH



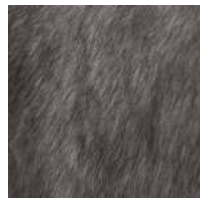
SILVER SPARKLE STINGRAY



PURPLE STINGRAY



BROWN/WHITE MINK



GREY MINK

METAL HARDWARE OPTIONS

GOLD

SILVER

ROSE GOLD

GUNMETAL

DIMENSIONS (L x H x W)

JAMIE FRAMED DOCTOR

Medium 10.5" x 6.5" x 5.0"
 Small 7.5" x 5.0" x 4.0"
 Mini 5.75" x 3.75" x 3.0"

LEE CLUTCH

Large 10.0" x 6.5" x 3.0"
 Medium 8.0" x 5.0" x 2.0"
 Mini 6.0" x 4.0" x 1.0"

CAROLINE TOTE

Large 16.0" x 12.0" x 7.0"
 Medium 13.5" x 10.0" high x 6.5"

MINDY TOTE

Large 15.0" x 12.0" x 7.0"
 Small 11.0" x 9.0" x 5.0"

BRUNI TOTE

Large 11.5" x 8.5" x 5.5"
 Small 8.75" x 6.5" x 4.0"

JANE SADDLE

Large 10.5" x 8.5" x 3.5"
 Medium 9.5" x 7.0" x 3.0"

ANJULI FRAMED CLUTCH

Medium 7.5" x 5.0" x 3.25"
 Small 7.0" x 3.5" x 2.25"

JAMIE FRAMED CLUTCH

Large 10.5" x 6.5" x 2.0"
 Medium 7.5" x 5.0" x 2.0"

AMANDA

Large 10.0" x 7.0" x 3.25"

LAURA JANE

Small 7.5" x 5.75" x 3.25"

AIMEE CLUTCH

Large 11.0" x 5.0" x 1.0"

SMALL PINECONES HANDCRAFTED IN ITALY, DANGLE FROM THE ZIPPERS OR ADORN THE FEET OF MANY OF TYLER'S DESIGNS. IT IS AN ANCIENT SYMBOL OF THE THIRD EYE, ALSO KNOWN AS THE PINEAL GLAND, WHICH LIES IN THE GEOMETRIC CENTER OF THE BRAIN AND ENABLES US TO SEE LIGHT. THIS SYMBOL HAS BEEN A SOURCE OF INSPIRATION FOR ALL MEDIUMS OF ART, AND AN IMPORTANT INSPIRATION FOR TYLER AS WELL.





Tyle Alexandra

CELEBRITIES



Anna Faris
Lee Clutch



Julia Louis-Dreyfus
Lee Clutch



Leslie Mann
Lee Clutch



Miranda Lambert
Lee Clutch



Tina Fey
Lee Clutch



Viola Davis
Lee Clutch



Naomie Harris
Jamie Clutch



Holland Roden
Lee Clutch



Kate Hudson
Jamie Clutch



Sandra Bullock
Lee Clutch



Emmy Rossum
Jamie Clutch



Amy Schumer
Jamie Clutch



Faith Hill with Tim McGraw
Lee Clutch



Michelle Monaghan
Jamie Clutch



Maria Sharapova
Jamie Clutch



Reese Witherspoon
Jamie Doctor



Zoe Saldana
Jamie Clutch



Chrissy Teigan
Jamie Clutch



Dianna Agron
Edwin Clutch



Jennifer Lopez
Jamie Clutch



Dita Von Teese
Jamie Clutch



Reese Witherspoon
Jamie Doctor



Laverne Cox
Jamie Clutch



Clair Danes with Hugh Dancy
Edwin Clutch



Zoe Saldana
Edwin Clutch



Gwen Stefani
Jamie Clutch



Queen Latifah
Edwin Clutch



Amber Heard with Johnny Depp
Jamie Clutch

TYLER ALEXANDRA
650 SIXTH AVENUE, SUITE 4J
NY, NY 10011
UNITED STATES
CONTACT@TYLERALEXANDRA.COM
PHONE: +1 (212) 956-7287

DAWN INELLO
SALES@TYLERALEXANDRA.COM
PHONE: +1 (845) 656-1078

US PRESS
LAUREN KILLMEYER -WETHERLY GROUP
L_BROWN@WETHERLYGROUP.COM
PHONE: +1 (212) 242-6467

FOREIGN PRESS
ALEX SHAH
AS@ALEXSHAH.CO.UK
PHONE: +44 (0) 7866482438