

Tyle Ellis



PALM SPRINGS COLLECTION SPRING/SUMMER 2017

This collection of handbags stems from a serendipitous collision of Tyler's travels to Palm Springs and her admiration of the photographic work of Slim Aarons. In particular his photo book, *Poolside Gossip*, captured not only the opulence and colors of the 1970's pool parties that typified Palm Springs, but also the Mid-Century Architecture that helped shape and influence her newest designs.

ABOUT THE DESIGNER

Tyler Ellis, daughter of revered designer, Perry Ellis, harnesses her jet-setting lifestyle into an endless current of inspiration. Her eponymous handbag line is defined by the array of luxe exotic materials and details of lasting function that encapsulate her worldly palette.







CANDY CLUTCH

MINI/MEDIUM

THE CANDY CLUTCH IS DESIGNED WITH A MAGNETIC THREE-QUARTER FRONT FLAP, A HIDDEN BACK POCKET, AND INTERNAL ZIP POCKET WITH A DETACHABLE CROSS BODY CHAIN. IT FEATURES OUR INFINITY BAR CLOSURE AND SIGNATURE "THAYER BLUE" SATIN LINING.







LEE POUCHET MINI/SMALL/LARGE

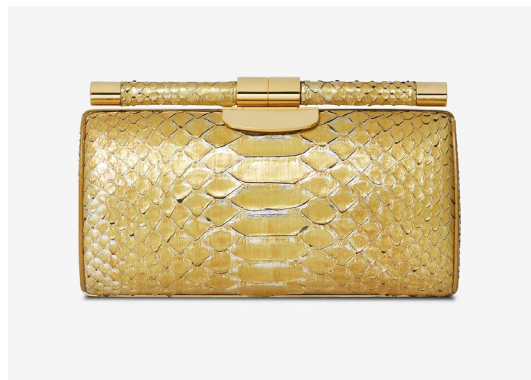
THE LEE POUCHET IS DESIGNED WITH A TRIANGULAR MAGNETIC FRONT FLAP CLOSURE, HIDDEN EXTERIOR POCKET, INTERIOR DIVIDER, AND OPTIONAL CROSS BODY CHAIN. IT FEATURES OUR SIGNATURE "THAYER BLUE" SATIN LINING.





LAURAJANE

THE LAURAJANE IS A CROSS-BODY BAG, WITH A FRONT SNAP CLOSURE, HIDDEN BACK POCKET, AND INTERIOR POCKET. IT FEATURES OUR PINECONE FEET AND SIGNATURE "THAYER BLUE" SATIN LINING.



ANJULI CLUTCH

SMALL/MEDIUM

THE ANJULI IS A STRUCTURED OVAL CLUTCH, WITH AN OPTIONAL CROSS BODY CHAIN, AND INTERIOR POCKET. IT FEATURES OUR SLIDE-LOCK CLOSURE AND SIGNATURE "THAYER BLUE" SATIN LINING. METAL TAB CAN BE ENGRAVED.



JAMIE CLUTCH

THE JAMIE IS A STRUCTURED SQUARE CLUTCH, WITH AN OPTIONAL CROSS BODY CHAIN, AND INTERIOR POCKET. IT FEATURES OUR SLIDE-LOCK CLOSURE AND SIGNATURE "THAYER BLUE" SATIN LINING. METAL TAB CAN BE ENGRAVED.





JAMIE DOCTOR MINI/SMALL/MEDIUM

THE JAMIE DOCTOR IS A DOUBLE HANDLE STRUCTURED BAG, WITH AN INTERIOR POCKET, AND OPTIONAL CROSS BODY STRAP. IT FEATURES OUR SLIDE-LOCK CLOSURE, PINECONE FEET, AND SIGNATURE "THAYER BLUE" SUEDE LINING. METAL TAB CAN BE ENGRAVED.



AIMEE CLUTCH

TOP HANDLE OPTIONAL

THE AIMEE CLUTCH IS DESIGNED WITH A MAGNETIC FRONT FLAP CLASP, HIDDEN EXTERIOR POCKET, INTERIOR DIVIDER, AND OPTIONAL CROSS BODY CHAIN. IT FEATURES OUR INFINITY BAR CLOSURE AND SIGNATURE "THAYER BLUE" SATIN LINING.













JANE SADDLE

MINI/LARGE

THE JANE HAS A ROUNDED THREE-QUARTER MAGNETIC FRONT FLAP, ATTACHED SHOULDER STRAP, WITH A HIDDEN EXTERIOR POCKET AND MULTIPLE INTERIOR POCKETS. IT FEATURES OUR INFINITY BAR CLOSURE AND SIGNATURE "THAYER BLUE" SUEDE LINING.





AMANDA

SMALL/LARGE/JUMBO

THE AMANDA SHOULDER BAG IS DESIGNED WITH A TRIANGULAR FRONT FLAP, HIDDEN EXTERIOR POCKET, AND INTERIOR ZIP POCKET. IT FEATURES OUR SPEAR-LOCK CLOSURE AND SIGNATURE "THAYER BLUE" SUEDE LINING.







CAROLINE TOTE

MEDIUM/LARGE

THE CAROLINE IS A SEMI-STRUCTURED TOTE WITH BUILT-IN PHONE CHARGING CAPABILITIES. THERE ARE TWO HIDDEN EXTERIOR POCKETS, INTERNAL ZIPPERED POCKET, CREDIT CARD SLOTS, AND A DETACHABLE CROSS BODY STRAP. IT FEATURES OUR "THAYER BLUE" SUEDE LINING AND PINECONE FEET. METAL TAB CAN BE ENGRAVED.



BARBARA

THE MULTI-FUNCTIONAL BARBARA BAG IS OFFERED IN A CROSS BODY OR FANNY PACK. IT HAS A MAGNETIC SNAP ROUNDED FRONT FLAP, A HIDDEN EXTERIOR POCKET, AND AN ADDITIONAL INTERIOR POCKET. IT FEATURES OUR INFINITY BAR CLOSURE AND SIGNATURE "THAYER BLUE" LEATHER LINING.







MARILYN SMALL/LARGE

THE MARILYN IS A LIGHT WEIGHT, DOUBLE HANDLE SOFT TOTE, DESIGNED WITH A FULL EXTERIOR PINECONE ZIPPER, INTERNAL ZIP POCKET, CREDIT CARDS SLOTS AND A DETACHABLE CROSS BODY STRAP. IT FEATURES OUR SIGNATURE "THAYER BLUE" SUEDE LINING AND PINECONE FEET. METAL TAB CAN BE ENGRAVED.



KELLY BOX

THE KELLY BOX IS DESIGNED AS A HARD FRAMED, VERTICAL, AND CROSS BODY. IT FEATURES OUR SPEAR-LOCK CLOSURE AND SIGNATURE "THAYER BLUE" SATIN LINING.

PETRA COLLABORATION



LOU CROSSBODY

THE LOU IS A VERTICAL CLUTCH WITH A MAGNETIC TRIANGULAR FRONT FLAP, HIDDEN BACK POCKET, AND A DETACHABLE CROSS BODY CHAIN. IT FEATURES "PETRA GREEN" SATIN LINING.









THAYER BLUE

Tyler Ellis "Thayer Blue" lining is a signature feature in each bag.



PINECONE DETAIL

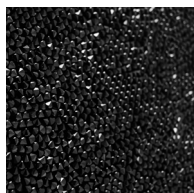
Pinecones handcrafted in Italy adorn the zippers or the feet of many of Tyler's designs. It is an ancient symbol of the third eye, which lies in the geometric center of the brain and enables us to see light. This symbol has been an important source of inspiration to Tyler.

MIAMI COLLECTION

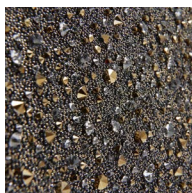
The "Miami" collection bags are a mixture of clear plastic and waterproof leather. They are designed to embrace luxury while at the beach, or an outdoor event without the fear of damage. Available in the Jamie Doctor, Lee Pouchet, Laurajane, and Caroline Tote.



SWAROVSKI CRYSTALS



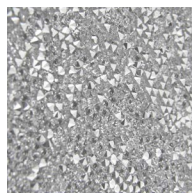
BLACK



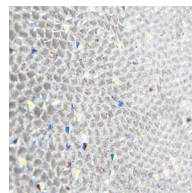
BLK/BRONZE



LIGHT GOLD

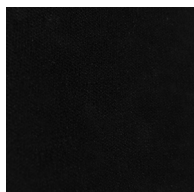


SILVER

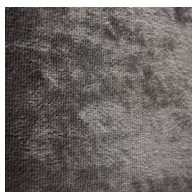


WHITE

VELVET



BLACK



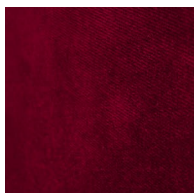
TAUPE



ROYAL BLUE
CRUSHED VELVET



GREEN



RED



DEEP PINK



LIGHT PINK



CREAM

BAG DIMENSIONS

CANDY

-MINI: 7.0" WIDE X 4.0" HIGH X 2.5" DEEP

LEE POUCHET

-MINI: 6.0" WIDE X 4.0" HIGH X 1.0" DEEP
-SMALL: 7.0" WIDE X 4.5" HIGH X 2.0" DEEP
-LARGE: 10.0" WIDE X 6.5" HIGH X 2.0" DEEP

LAURAJANE

-SMALL: 6.0 WIDE X 5.25" HIGH X 2.75" DEEP

ANJULI CLUTCH

-SMALL: 7.0" WIDE X 3.5" HIGH X 2.25" DEEP
-MEDIUM: 7.5" WIDE X 5.0" HIGH X 3.25" DEEP
-LARGE: 8.5" WIDE X 4.0" HIGH X 3.0" DEEP

JAMIE CLUTCH

-SMALL: 5.75" X WIDE X 3.75" HIGH X 1.75" DEEP

JAMIE DOCTOR BAG

-MINI: 5.75" WIDE X 3.75" HIGH X 3.0" DEEP
-SMALL: 7.5" WIDE X 5.0" HIGH X 4.0" DEEP
-MEDIUM: 10.5" WIDE X 6.5" HIGH X 5.0 DEEP

AIMEE CLUTCH

-LARGE: 11.0" WIDE X 5.0" HIGH X 1.0" DEEP

JANE SADDLE

-MINI: 8.0" WIDE X 5.5" HIGH X 2.5" DEEP
-LARGE: 10.5" WIDE X 8.5" HIGH X 3.5" DEEP

AMANDA SHOULDER

-SMALL: 7.5" WIDE X 5.0" HIGH X 2.5" DEEP
-LARGE: 10.0" HIGH X 7.0" HIGH X 3.25" DEEP
-JUMBO: 13.5" WIDE X 9.0" HIGH X 4.5" DEEP

MARILYN

-LARGE: 11.5" WIDE X 9.0" HIGH X 6.5" DEEP

CAROLINE TOTE

-SMALL: 7.5" WIDE X 5.5" HIGH X 3.5" DEEP
-MEDIUM: 13.5" WIDE X 9.0" HIGH X 6.5" DEEP
-LARGE: 16.0" WIDE X 12.0" HIGH X 7.0" DEEP

BARBARA

-SMALL: 7.75" WIDE X 6.5" HIGH X 2.25" DEEP

KELLY BOX

-SMALL: 4.5: WIDE X 7.5: HIGH X 2.5" DEEP

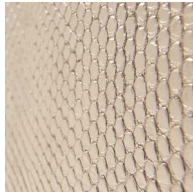
HARDWARE OPTIONS

GOLD/SILVER/ROSE GOLD/GUN METAL

PYTHON



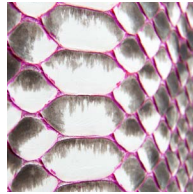
WHITE PYTHON



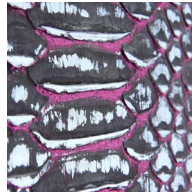
ROSE GOLD
PYTHON



YELLOW
PAINTED
PYTHON



HOT PINK
PAINTED
PYTHON



BLK/SLVR/
PINK PAINTED
PYTHON



KAL PAINTED
PYTHON

SIGNATURE PLONGE LEATHER



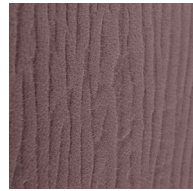
NERO



CAPRI NAVY



NAPOLI NUDE



SAN REMO
BLUSH

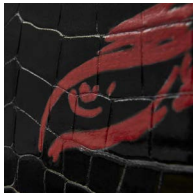


AMALFI RED

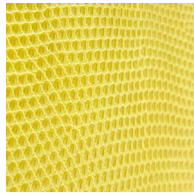


POSITANO
ORANGE

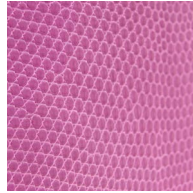
ALLIGATOR & LIZARD



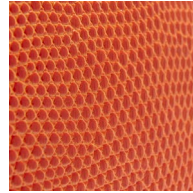
BLK/RED EYE
PAINTED
ALLIGATOR



BRIGHT YELLOW
LIZARD



BRIGHT PINK
LIZARD

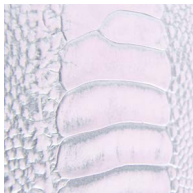


ORANGE LIZARD



ORANGE GUM
ALLIGATOR

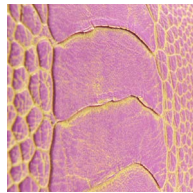
OSTRICH & OSTRICH LEG



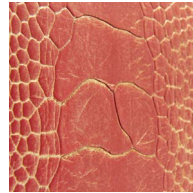
PINK IRRID
OSTRICH LEG



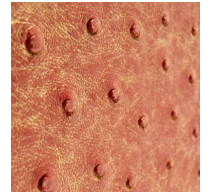
GOLD OSTRICH
LEG



PINK GOLD
OSTRICH LEG



ORANGE GOLD
OSTRICH LEG



ORANGE GOLD
OSTRICH

SUEDE



YELLOW SUEDE



PINK SUEDE



ORANGE SUEDE



PURPLE SUEDE





Hyle Ellis
CELEBRITIES



KALEY CUOCO
LEE POUCHET



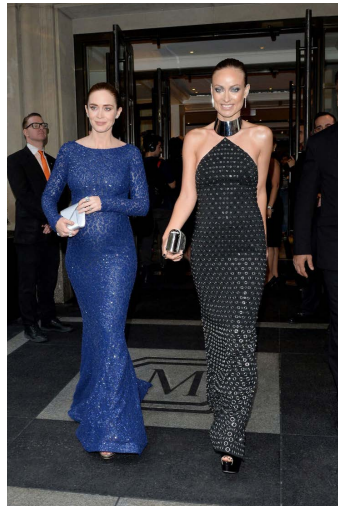
AMY ADAMS
LEE POUCHET



ANNA FARIS
LEE POUCHET



CHRISSY TEIGEN
JAMIE CLUTCH



EMILY BLUNT
LEE POUCHET



JENNIFER HUDSON
LEE POUCHET



AMBER HEARD
JAMIE CLUTCH



ELIZABETH BANKS
LEE POUCHET



KATE HUDSON
JAMIE CLUTCH



JULIA LOUIS-DREYFUS
LEE POUCHET



JENNIFER LOPEZ
LEE POUCHET



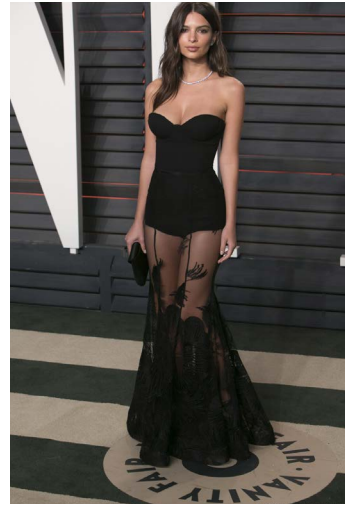
LUCY LIU
JAMIE CLUTCH



SANDRA BULLOCK
LEE POUCHET



MARGOT ROBBIE
AIMEE CLUTCH



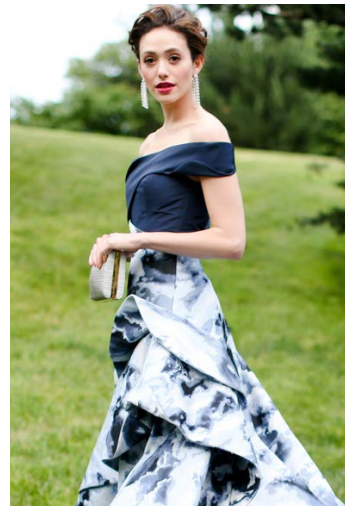
EMILY RATAJKOWSKI
LEE POUCHET



VIOLA DAVIS
LEE POUCHET



ZOE SALDANA
JAMIE CLUTCH



EMMY ROSSUM
JAMIE CLUTCH



TYLER ELLIS
SHOWROOM
650 SIXTH AVENUE, SUITE 5J
NY, NY 10011 UNITED STATES
INFO@TYLERELLIS.COM
+1 (212) 956-7287

VICE PRESIDENT
OF SALES
DAWN INELLO
DAWN@TYLERELLIS.COM
+1 (845) 656-1078

US PRESS
MICHELE MARIE PR
JARRED DENZEL
JARRED@MICHELEMARIEPR.COM

FOREIGN PRESS
ALEX SHAH
AS@ALEXSHAH.CO.UK