



Hyle Ellis

AUTUMN/WINTER 2017



MONACO COLLECTION AUTUMN/WINTER 2017

Tyler found inspiration in the city known as the playground for the rich and the famous. Monaco's opulence, hedonism, and absolute satiation of the senses is the energy she encapsulated within her collection of vibrant colors and bold details.

Channeling the divine glamor and excess from the 20's, she personified the duality of regal adornment with contemporary aesthetics. Marrying strong exotic textures and statement metallics, each piece is meant to revel in life's indulgences.

ABOUT THE DESIGNER

Tyler Ellis, daughter of revered designer, Perry Ellis, harnesses her jet-setting lifestyle into an endless current of inspiration. Her eponymous handbag line is defined by the array of luxe exotic materials and details of lasting function that embody her worldly palette.





CANDY CLUTCH

SMALL/MEDIUM

The Candy Clutch is designed with a magnetic three-quarter front flap, hidden back pocket, and internal zip pocket with detachable cross body chain. It features our infinity bar closure and signature "Thayer Blue" satin lining.





ALEX WALLET

The Alex Wallet is designed with a detachable cross body chain, interior credit card slots and pinecone pull zip pocket. It features our signature spear-lock closure and our "Thayer Blue" leather lining.



JANE SADDLE

SMALL/LARGE

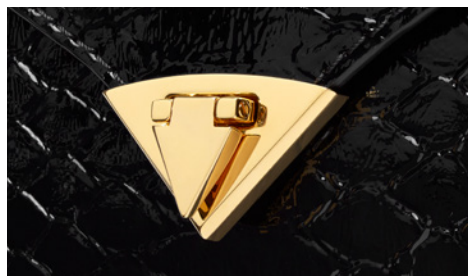
The Jane Saddle has a rounded three-quarter magnetic front flap, attached shoulder strap, with a hidden exterior pocket and multiple interior pockets. It features our infinity bar closure and signature "Thayer blue" suede lining.





AMANDA

The Amanda shoulder bag is designed with a triangular front flap, hidden exterior pocket, and interior zip pocket. It features our spear-lock closure and signature "Thayer blue" suede lining.







ANJULI CLUTCH

The Anjali is a structured oval clutch, with an optional cross body chain, and interior pocket. It features our slide-lock closure and signature "Thayer blue" satin lining. Metal tab can be engraved.



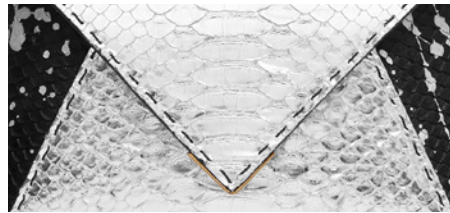


LJ

SMALL/LARGE

The LJ is a cross body bag, with a front flap and our signature spear-lock closure. It's designed with a hidden back pocket, interior pockets, detachable strap, our signature pinecone feet and "Thayer blue" suede lining.





LEE POUCHET SMALL/LARGE

The Lee Pouchet is designed with a triangular magnetic front flap closure, hidden exterior pocket, interior divider, optional cross body chain and features our signature "Thayer blue" satin interior.



AIMEE CLUTCH

The Aimee Clutch is designed with a magnetic front flap clasp, hidden exterior pocket, interior divider, and optional cross body chain. It features our infinity bar closure and signature "Thayer blue" satin lining.



AIMEE ROUND SMALL/LARGE

The Aimee Round is designed with a magnetic front flap clasp, hidden exterior pocket, interior divider, and optional cross body chain. It features our infinity bar closure and signature "Thayer blue" satin lining.







JAMIE CLUTCH

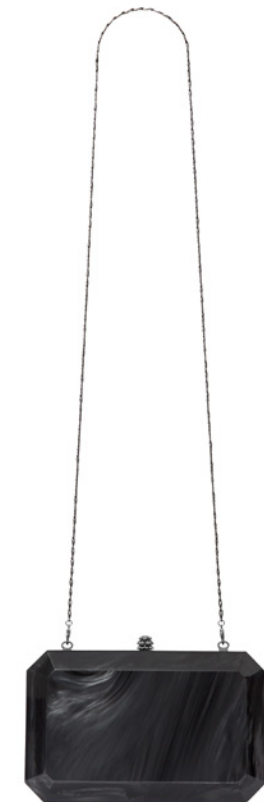
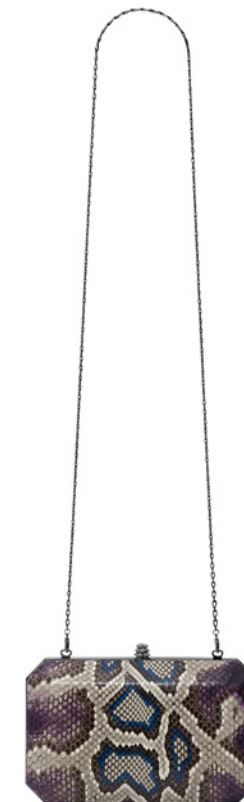
The Jamie Clutch is a structured square clutch, with an optional cross body chain, interior pocket and features our slide-lock closure and signature "Thayer blue" satin lining. Metal tab can be engraved.





LILY CLUTCH

The Lily Clutch is a square shaped, metal framed hard clutch, with a detachable cross body chain. It features interior pockets and our signature "Thayer blue" satin lining and pinecone closure.



BRIDGET

The Bridget is a square shaped, semi-structured, shoulder bag, designed with a magnetic three-quarter length front flap, a hidden back pocket, and internal zip pocket. It features our infinity bar closure and signature "Thayer blue" leather lining.



BARBARA

The Barbara is a cross body bag, featuring a magnetic snap rounded front flap, a hidden exterior pocket and an additional interior pocket, featuring our infinity bar closure and signature "Thayer Blue" leather lining.





CAROLINE TOTE

The Caroline is a semi-structured tote with built-in phone charging capabilities, two hidden exterior pockets, internal zippered pocket, credit card slots and a detachable cross body strap. It features our signature "Thayer Blue" satin lining and pinecone feet. Metal tab can be monogrammed.





JAMIE DOCTOR

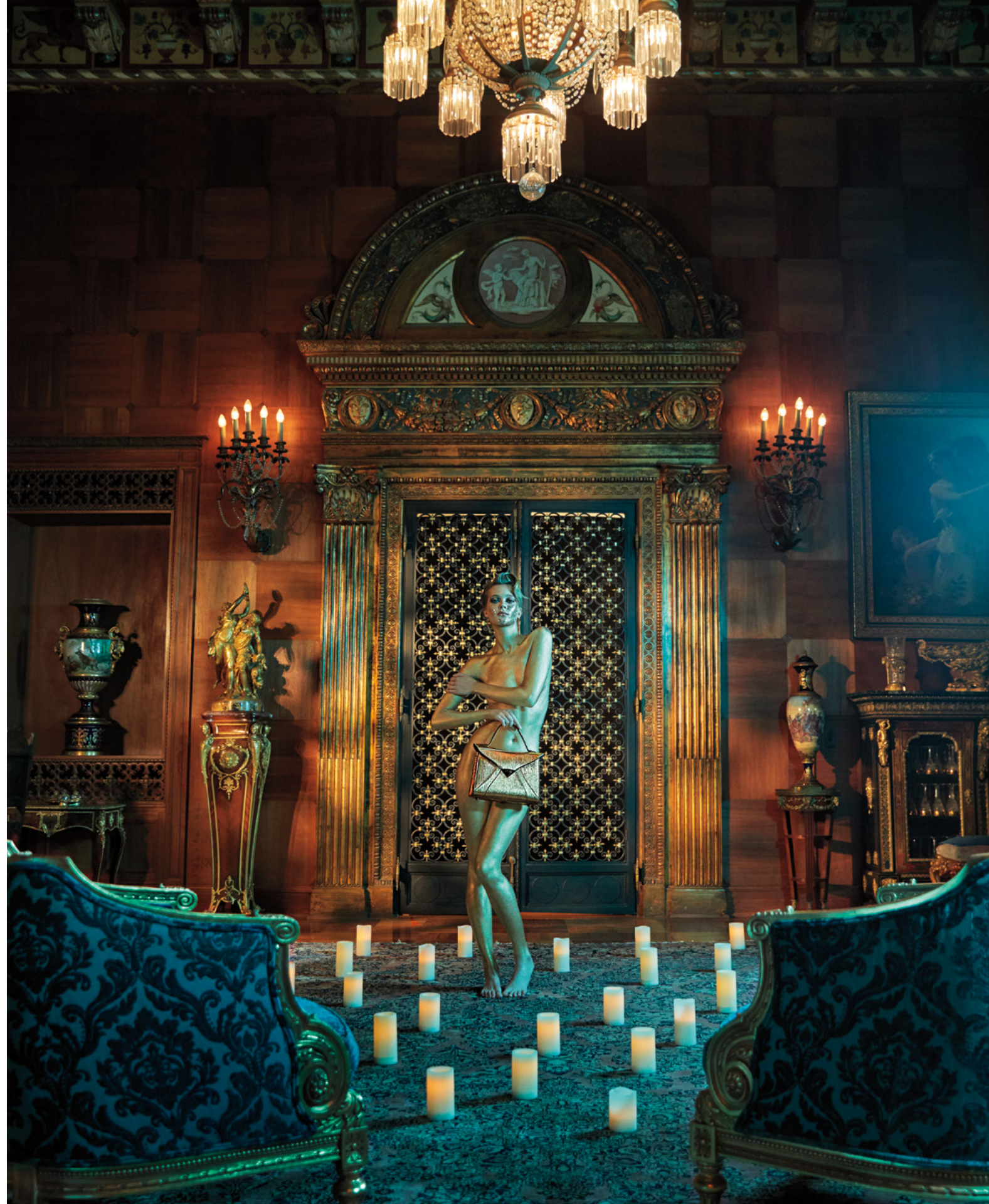
MINI/SMALL

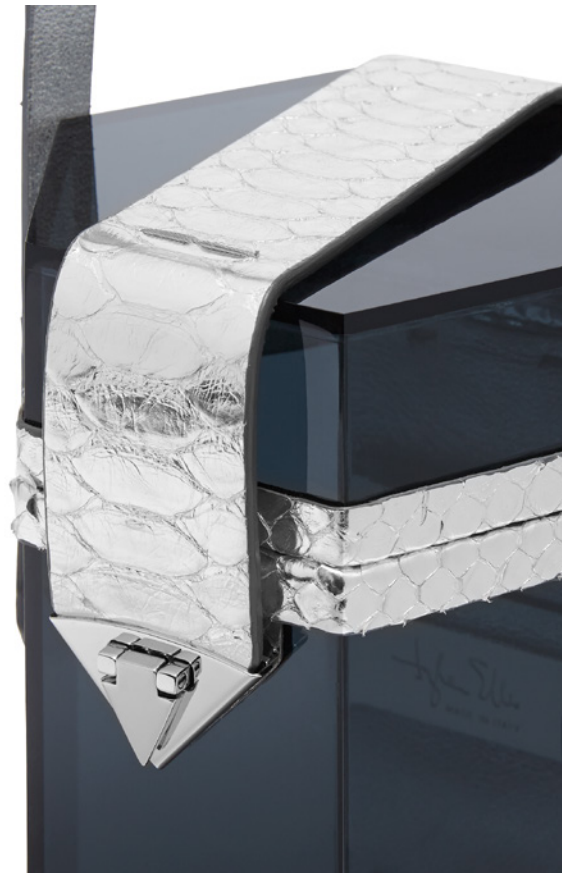
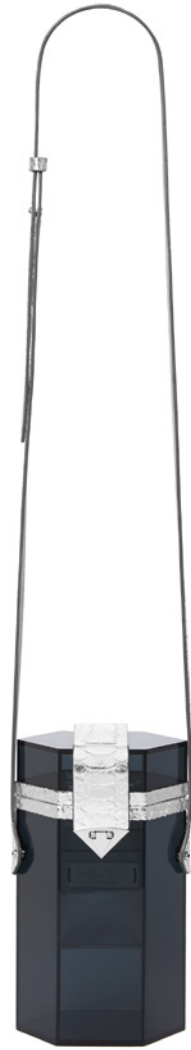
The Jamie Doctor is a double handle, structured bag, with an optional cross body strap, and interior pocket. It features our slide-lock closure, pinecone feet and signature "Thayer blue" suede lining. Metal tab can be engraved.



MARILYN

The Marilyn is a light weight, double handle soft tote, designed with a full exterior pinecone zipper, interior zip pocket, credit cards slots and a detachable cross body strap. It features our signature "Thayer Blue" suede lining and pinecone feet. Metal tab can be engraved.





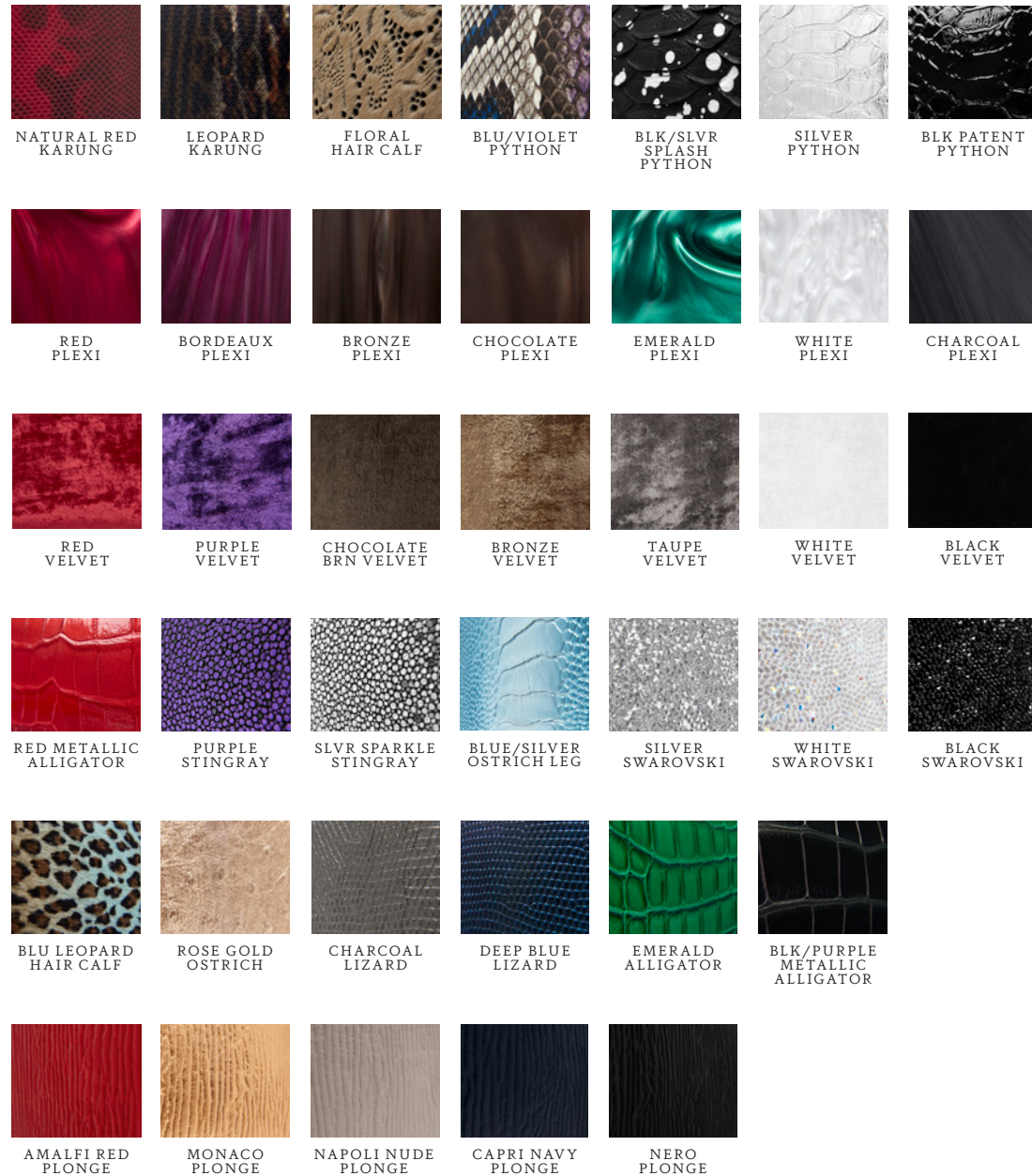
BOFF BOX

The Boff Box is a hard framed hexagon, carried as a vertical cross body. It features an interior mirror, card slots and our signature spear-lock closure.



KELLY BOX

The Kelly Box is a hard framed, vertical cross body. It features an interior mirror, card slots and our signature pinecone closure.



HARDWARE OPTIONS

GOLD/SILVER/ROSE GOLD/GUN METAL
LAVENDER/RED/GREEN & BLUE/GREEN

TYLER ELLIS SIGNATURE DETAILS



PINECONE

As an important inspiration, the pinecones handcrafted in Italy adorn the zippers or the feet of many of Tyler's designs. It is an ancient symbol of the third eye, which lies in the geometric center of the brain and enables us to see light.



THAYER BLUE

Tyler Ellis "Thayer Blue" lining is a signature feature in each bag.

BAG DIMENSIONS

CANDY

SMALL: 7.0" WIDE X 4.0" HIGH X 2.5" DEEP
MEDIUM: 8.0" WIDE X 6.0" HIGH X 4.0" DEEP

ALEX

7.5" WIDE X 4.5" HIGH X 1.5" DEEP

JANE SADDLE

MEDIUM: 9.5" HIGH X 7.0" WIDE X 3.0" DEEP
LARGE: 10.5" WIDE X 8.5" HIGH X 3.5" DEEP

AMANDA SHOULDER

10.0" HIGH X 7.0" HIGH X 3.25" DEEP

ANJULI CLUTCH

7.5" WIDE X 5.0" HIGH X 3.25" DEEP

LAURA JANE

SMALL: 6.0 WIDE X 5.25" HIGH X 2.75" DEEP
LARGE: 12.0" WIDE X 9.0 HIGH X 5.0 DEEP

LEE CLUTCH

SMALL: 7.0" WIDE X 4.5" HIGH X 2.0" DEEP
LARGE: 10.0" WIDE X 6.5" HIGH X 2.0" DEEP

JAMIE CLUTCH

7.5" WIDE X 5.0" HIGH X 2.0" DEEP

AIMEE CLUTCH

SMALL ROUND: 8.0" WIDE X 4.0" HIGH X 2.0" DEEP
LARGE ROUND: 9.5" WIDE X 4.5" HIGH X 2.0" DEEP
LARGE: 11.0" WIDE X 5.0" HIGH X 1.0" DEEP

LILY CLUTCH

8.5" WIDE X 5.5" HIGH X 2.0" DEEP

BARBARA

7.75" WIDE X 6.5" HIGH X 2.25" DEEP

BRIDGET

10.0" WIDE X 7.5" HIGH X 2.0" DEEP

CAROLINE TOTE

13.5" WIDE X 9.0" HIGH X 6.5" DEEP

JAMIE DOCTOR BAG

MINI: 5.75" WIDE X 3.75" HIGH X 3.0" DEEP
SMALL: 7.5" WIDE X 5.0" HIGH X 4.0" DEEP

MARILYN

7.5" WIDE X 5.0" HIGH X 4.0" DEEP

KELLY BOX

4.5: WID EX 7.5: HIGH X 2.5" DEEP

BOFF

4.5" WIDE X 8.0" HIGH X 4.5" HIGH



Tylee Ellis
CELEBRITIES



LUCY HALE
ANJULI CLUTCH



JULIE BOWEN
LILY CLUTCH



MICHELLE MONAGHAN
PERRY CLUTCH



LUCY LIU
JAMIE CLUTCH



LUPITA NYONG'O
LEE POUCHET



EMMA STONE
LOU CROSSBODY



AMY ADAMS
LEE POUCHET



CLAIRE DANES
JAMIE CLUTCH



HEATHER GRAHAM
LEE POUCHET



MOLLY SIMS
LILY CLUTCH



NINA DOBREV
CANDY CLUTCH



OCTAVIA SPENCER
LEE POUCHET



VIOLA DAVIS
LILY CLUTCH



JENNA DEWAN TATUM
AIMEE CLUTCH



SARAH PAULSON
LILY CLUTCH



REESE WITHERSPOON
JAMIE DOCTOR



ROBIN WRIGHT
LEE POUCHET



JESSICA BIEL
LILY CLUTCH

TYLER ELLIS
SHOWROOM
650 SIXTH AVENUE, SUITE 5J
NY, NY 10011 UNITED STATES
INFO@TYLERELLIS.COM
+1 (212) 956-7287

VICE PRESIDENT
OF SALES
DAWN INELLO
DAWN@TYLERELLIS.COM
+1 (845) 656-1078
US PRESS
MICHELE MARIE PR
KYLIE PETERSON
KYLIE@MICHELEMARIEPR.COM

FOREIGN PRESS
ALEX SHAH
AS@ALEXSHAH.CO.UK

PHOTOGRAPHY
PHILLIP R. LOPEZ