

A woman with long, wavy brown hair is shown from the chest up, wearing a white sleeveless top and a white skirt with a gathered waist. She is holding a bright orange, quilted handbag with a gold chain strap and a gold tassel. The bag has a flap with a gold clasp and a gold tassel hanging from the bottom. She is also wearing several rings on her fingers.

*Tyler Ellis*  
TYLER ELLIS®

FIESOLE COLLECTION  
SPRING // SUMMER 2021



*Photograph by David Peterson*



## **ABOUT THE DESIGNER**

Tyler Ellis, the daughter of revered fashion designer Perry Ellis, channels her fascination for traveling into an endless current of inspiration. Her eponymous handbag line is defined by an array of luxe materials and intricate details that embody her worldly palette. In 2011, Tyler launched a limited collection in New York City, originally producing all handbags out of Paris, France. After years of searching for the perfect partner, Tyler moved all production to a father and son owned/operated atelier outside of Florence, Italy, and in 2017 she officially launched her current label, *Tyler Ellis*. Tyler now lives in West Los Angeles with her husband Ben and their three puppies.



Fontana della Pigna, Pigna Court, Vatican City, Italy





## Continuing the *Ellis* Legacy

Tyler's designs are brought to life by the hands of fastidious Italian artisans who produce perfection no machine can mimic. From hand-stitching and hand-painted edges to custom hardware created specifically for each design, Tyler Ellis handbags represent an ardent commitment to couture and quality craftsmanship that has earned a cult following. The designs look equally at home on the red carpet as well as in everyday life and are carried by influential women worldwide. As a personal homage to Tyler's father, Perry Ellis' handwriting appears as the company logo; and most dear to Tyler, he is a part of everything she creates.

On a trip to Vatican City, Tyler came across the Fontana della Pigna, the iconic bronze statue that sits in Pigna Court, which is the inspiration behind the pinecone that has become the spirit behind the Ellis brand. Pinecones embody the ancient symbol of the third eye, representing the highest form of spiritual awakening, perfection and much more. The symbol can be found throughout historic art and architecture, from the tops of Pharaoh's staffs, to unique decorations on European dwellings. Pinecones adorn the zippers, feet and fasteners of many of Tyler's designs. These gorgeous details went through multiple hand carved wax castings to create our signature Pinecone.



November 16, 1985 - The envelope Perry addressed to Tyler on her 1st birthday, from which his handwriting was captured



*Hyle Ellis*



## FIESOLE COLLECTION

SPRING // SUMMER 2021

I designed this eye-catching collection with hopes of bringing smiles to people's faces. It's filled with handcrafted pieces in bright colors and luscious textures that are meant to spark memories of joyful moments spent with close friends and family. From fluorescent patent leathers to electric pythons, the Fiesole Collection will take you back to places you've been dreaming of!

I chose to name it Fiesole, after a small town in the Italian hills that looks down on the beautiful city of Florence, minutes away from my factory. I typically begin my design process there, after choosing my new material samples from Lineapelle, the biannual leather fair in Milan, but travel was not an option this year. I was forced to think outside of the box and decided to repurpose a few hides from my archives by adding a laminated coat, making this my first sustainable collection, something I am very excited about. I'm hoping these little pieces of joy will symbolize brighter days ahead!



Tiffany 'Riviera' Petite  
in Fluorescent Pink Patent Leather



Tiffany 'Riviera' Petite  
in Fluorescent Pink Patent Leather



in Rockstar Pink Antiqued Leather

## TIFFANY 'RIVIERA' HANDBAG

The Tiffany is a semi-structured rectangular handbag with a front flap finished with a magnetic snap closure and our custom Infinity Bar. The intricate stitching details on the sumptuous leather offers a magnificent quilted effect. The bag fits the large iPhone and is designed with a flexible top-handle, a metal tassel accent and an optional chain with a leather or exotic wrapped accent. It has a hidden back pocket, an internal pocket and features our signature Thayer Blue lining.







Tiffany 'Classica' Shoulder Bag  
in Palm Green Leather



*in Lipstick Pink Leather*



**Tiffany 'Classica' Shoulder Bag**  
*in Palm Green Leather*



## **TIFFANY 'CLASSICA' SHOULDER BAG**

The Tiffany is a semi-structured rectangular shoulder bag with a front flap finished with a magnetic snap closure and our custom Infinity Bar. The intricate stitching details on the sumptuous leather offers a magnificent quilted effect. The bag is designed with a chain and a leather or exotic wrapped accent, has a hidden back pocket, an internal pocket and features our signature Thayer Blue lining.

The Tiffany is available with or without the metal tassel detail.





Jane Saddle Small  
in Lipstick Pink Leather



in Palm Green Leather

## JANE SADDLE

The Jane Saddle is designed with a rounded three-quarter front flap, a magnetic snap closure and our custom Infinity Bar. It has a hidden exterior pocket, an optional chain with a leather or exotic wrapped accent, interior pockets and features our signature Thayer Blue lining.



Tiffany 'Classica' Backpack Petite  
*in Lipstick Pink Leather*





Tiffany 'Classica' Backpack Petite  
*in Citrine Patent Leather*



*in Palm Green Leather*

## TIFFANY 'CLASSICA' BACKPACK

The Tiffany is a semi-structured backpack with a front flap finished with a magnetic snap closure and our custom Infinity Bar. The intricate stitching details on the sumptuous leather offers a magnificent quilted effect. The bag is designed with a metal tassel accent, fits the large iPhone, has a hidden back pocket, an internal pocket and features our signature Thayer Blue lining.





Rita Handbag  
*in Citrine Patent Leather*

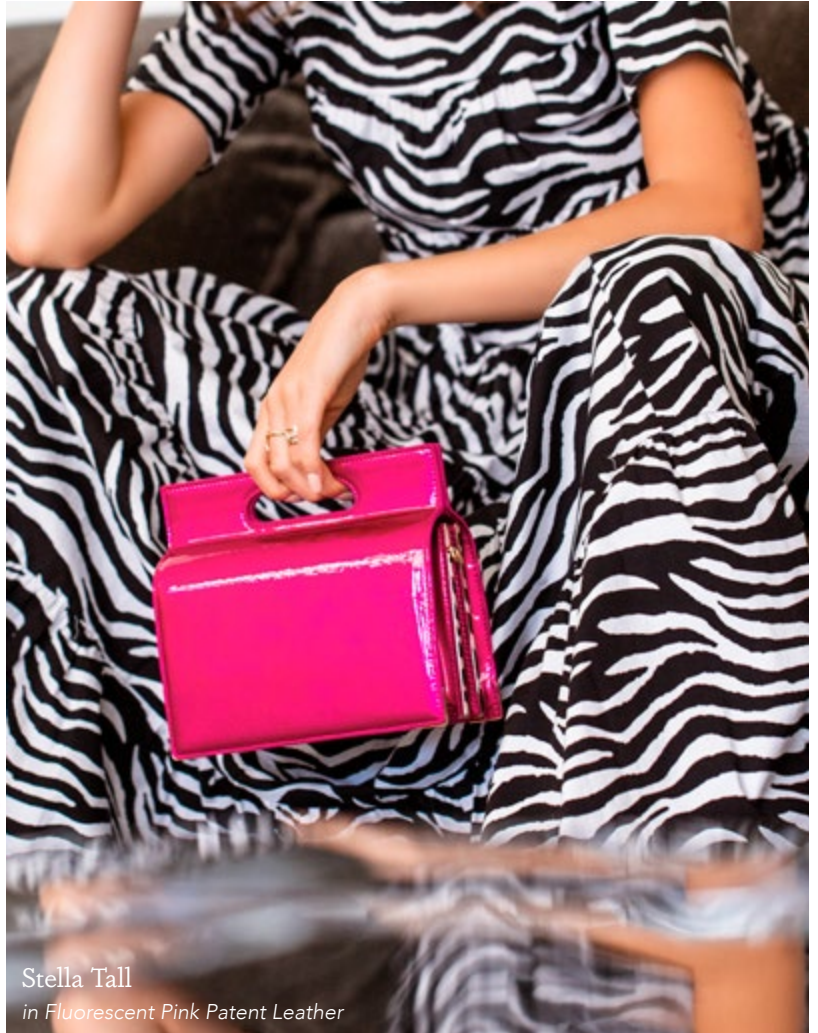
## RITA HANDBAG

The Rita is a semi-structured handbag with a triangular front flap and our custom Spear-lock Closure. It is designed with a flexible top-handle and an optional chain with a leather or exotic wrapped accent. It fits the large iPhone, has a hidden back pocket and features our signature Thayer Blue lining.





*in Citrine Patent Leather*



Stella Tall  
*in Fluorescent Pink Patent Leather*

## STELLA HANDBAG

### TALL

The Stella is a structured handbag with a magnetic closure and an optional cross-body chain with a leather or exotic wrapped accent. It fits the large iPhone, has custom exterior metal detailing, interior pockets an extra-long key fob and features our signature Thayer Blue lining.





Jane Saddle Small  
in Golden Leopard Patent Leather





LJ Handbag Large  
in Golden Leopard Patent Leather

## LJ HANDBAG

### LARGE

The LJ is a semi-structured handbag with a triangular front flap and our custom Spear-lock Closure. It is designed with an exotic or leather wrapped top-handle, handmade "whip-stitch" detail and an optional chain with a leather or exotic wrapped accent. It has a hidden back pocket, interior pockets and features our signature Pinecone Feet and Thayer Blue lining.





Lily Clutch  
*in Golden Leopard Patent Leather*



## LILY CLUTCH

The Lily is a hard-framed rectangular clutch designed with interior pockets and an optional cross-body chain. It fits the large iPhone and features our signature Pinecone Closure and Thayer Blue lining.





Grace Bucket  
in Palm Green Leather w/ Fringe



Grace Bucket  
in Palm Green Leather w/ Fringe



in Lipstick Pink Leather

## GRACE BUCKET

The Grace is a semi-structured bucket with a detachable leather handle. It has a drawstring pull finished with our custom Continuum Closure. It fits the large iPhone, has internal card slots and features our signature Thayer Blue lining.



Poppy Handbag Large  
in Snow White Summer Fox





Poppy Handbag Large  
*in Snow White Summer Fox*



## POPPY HANDBAG

SMALL & LARGE

The Poppy is a soft handbag designed with a Lucite handle and our custom half-metal frame topped with our Pinecone Closure. It fits the large iPhone, has a detachable metal chain and features our signature Thayer Blue lining.



**Jamie Doctor Medium**  
*in Raspberry Parfait Matte Python*



**JAMIE DOCTOR**  
SMALL & MEDIUM

The Jamie Doctor is a semi-structured metal-framed double handled handbag designed with our custom Slide-lock Closure and Pinecone feet. It fits the large iPhone, has interior pockets, an optional cross-body strap and is finished with our signature Thayer blue lining. Please email [bespokeconcierge@tylerellis.com](mailto:bespokeconcierge@tylerellis.com) for metal tab customization details.





Piper Clutch & Tiffany 'Riviera' Petite  
in Rockstar Pink Antiqued Leather



## PIPER CLUTCH

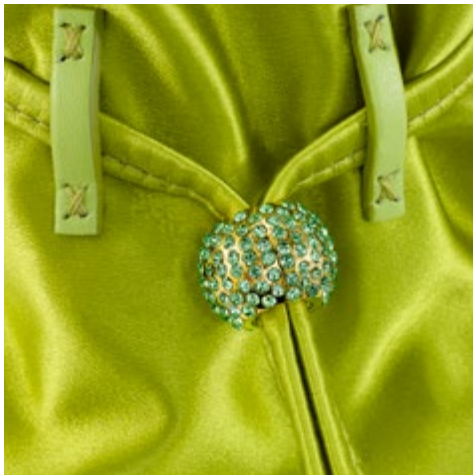
The Piper is an oval clutch designed with an extra wide gusset, a three-quarter front flap, a magnetic snap closure and is finished with our custom Infinity Bar. It fits the large iPhone, has a hidden exterior pocket, interior divider, an optional cross-body chain and features our signature Thayer Blue lining. The Piper is available with or without the metal tassel detail.







Grace Pouch  
in Pink Paradise Satin w/ Swarovski Crystal Closure



Swarovski Crystal Closure

## GRACE POUCH

The Grace is a soft pouch with a satin handle and drawstring closure embellished with Swarovski crystals. It fits the large iPhone, has interior card slots and features our signature Thayer Blue lining.



Lee Pouchet Small  
in Lemon Yellow Satin





Lee Pouchet Small  
in Chartreuse Satin



Fuchsia Crushed Velvet



Lemon Yellow Crushed Velvet



Tiger Orange Crushed Velvet



Coral Satin



Pink Paradise Satin

## LEE POCHE SMALL

The Lee Pouchet is our signature envelope-shaped clutch with a triangular front flap and a magnetic snap closure. It fits the large iPhone and has a hidden exterior pocket, an optional cross-body chain and features our signature Thayer blue lining.



Perry Clutch  
*in Fuchsia Crushed Velvet*



## PERRY CLUTCH

The Perry is a hard-framed clutch designed with interior pockets and an optional cross-body chain. Its elegant emerald shape is inspired by Tyler's own engagement ring and named after her father, Perry Ellis. It fits the large iPhone and features our signature Pinecone Closure and Thayer Blue lining.





Stella Petite  
*in Lime Laminated Python*



## STELLA HANDBAG PETITE

The Stella is a structured tri-compartment handbag with a magnetic closure and an optional cross-body chain with a matching leather or exotic wrapped accent. It fits the large iPhone, has custom exterior metal detailing, interior pockets, an extra-long key fob and features our signature Thayer Blue lining.





## AIMEE CLUTCH

The Aimee is a clutch designed with a three-quarter front flap, a magnetic snap closure and is finished with our custom Infinity Bar. It fits the large iPhone, has a hidden exterior pocket, an optional cross-body chain and features our signature Thayer Blue lining. Please email [bespokeconciierge@tylerellis.com](mailto:bespokeconciierge@tylerellis.com) for custom chain/strap details.



*in Lime Laminated Python*



*in Coral Laminated Python*



Aimee Clutch & LJ Handbag Small  
*in Coral Laminated Python*



## LJ HANDBAG SMALL

The LJ is a semi-structured handbag with a triangular front flap and our custom Spear-lock Closure. It is designed with an exotic or leather wrapped top-handle, handmade "whip-stitch" detail and an optional chain with a leather or exotic wrapped accent. It has a hidden back pocket, an interior pocket and features our signature Pinecone Feet and signature Thayer Blue lining.





Jamie 'Miami' Doctor Small  
in Citrine Patent Leather & Clear PVC





Jamie 'Miami' Doctor Small  
in Fluorescent Pink Patent Leather & Clear PVC

## JAMIE 'MIAMI' DOCTOR SMALL & MEDIUM

The Jamie Doctor is a semi-structured metal-framed double handled handbag designed with our custom Slide-lock Closure and Pinecone feet. This bag is water resistant, fits the large iPhone, has an interior pocket and an optional cross-body strap. Please email [bespokeconciierge@tylerellis.com](mailto:bespokeconciierge@tylerellis.com) for metal tab customization details.





LJ 'Jelly' Handbag  
in Custom Birds of Paradise PVC



LJ 'Miami' Handbag  
in Citrine Patent Leather & Clear PVC

## LJ 'MIAMI' HANDBAG

The LJ is a semi-structured handbag with a triangular front flap and our custom Spear-lock Closure. It is designed with a leather wrapped top-handle, handmade "whip-stitch" detail, an optional chain with a leather wrapped accent, and is water-resistant. It has a hidden back pocket, an interior pocket, and features our signature Pinecone Feet.

## LJ 'JELLY' HANDBAG

The LJ is a semi-structured handbag with a triangular front flap and our custom Spear-lock Closure. It is designed with a top-handle, an optional strap and is water-resistant. It has a hidden back pocket, an interior pocket and features our signature Pinecone Feet.



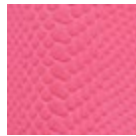
*Ife Ellis*<sup>®</sup>  
MATERIALS



Lily Clutch  
in Birds of Paradise Satin

# FIESOLE EXCLUSIVE MATERIALS

## REPURPOSED SKINS



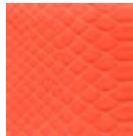
Raspberry Parfait  
Matte Python



Raspberry Parfait  
Laminated Python



Lime Laminated  
Python



Coral Laminated  
Python



Snow White  
Summer Fox

## LEATHERS



Citrine Patent  
Leather



Fluorescent Pink  
Patent Leather



Lipstick Pink  
Leather



Palm Green  
Leather



Rockstar Pink  
Antiqued Leather



Golden Leopard  
Patent Leather

## PVC



Clear



Custom Birds  
of Paradise



Pixie Dust



Minion Yellow



Garfield Orange



Leprechaun Green

## CRUSHED VELVET



Chartreuse



Flamingo



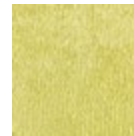
Platinum



Fuchsia



Tiger Orange

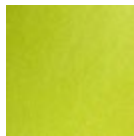


Lemon Yellow

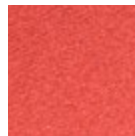
## SATIN



Custom Birds  
of Paradise



Chartreuse



Coral



Canary



Pink Paradise



Lemon Yellow



Tiger Orange

## BAG DIMENSIONS

**AIMEE CLUTCH**  
11" x 5.1" x 1"

**GRACE BUCKET**  
Small: 6.25" x 8.5" x 5"

**GRACE POUCH**  
Petite: 5.5" x 7" x 5.5"

**JAMIE DOCTOR**  
Small: 7" x 5.6" x 4.25"  
Medium: 10.75" x 7.25" x 5.5"

**JANE SADDLE**  
Small: 8.7" x 7" x 3"

**LEE POUCHET**  
Small: 8" x 5.25" x 1.75"  
Large: 10.5" x 6.5" x 2"

**LILY CLUTCH**  
8.5" x 5.5" x 2.5"

**LJ HANDBAG**  
Jelly: 8.7" x 6" x 3.5"  
Small: 9" x 6" x 3.5"  
Large: 13.5" x 12.5" x 5.5"

**PERRY CLUTCH**  
Small: 8" x 4.5" x 2"

**PIPER CLUTCH**  
8" x 4" x 1.75"

**POPPY HANDBAG**  
Small: 10" x 6" x 5"  
Large: 11" x 7" x 5"

**RITA HANDBAG**  
Small: 7.1" x 6" x 3"

**STELLA HANDBAG**  
Petite: 7" x 5.75" x 4.5"  
Tall: 8.25" x 7.25" x 3.5"  
Small: 9" x 7.4" x 5.5"

**TIFFANY 'CLASSICA'  
BACKPACK**  
Petite: 5.5" x 6.5" x 3.75"

**TIFFANY 'CLASSICA'  
SHOULDER BAG**  
Medium: 10.5" x 6.5" x 3.75"

**TIFFANY 'RIVIERA'  
HANDBAG**  
Petite: 8" x 6" x 2.75"

## HARDWARE OPTIONS

GOLD // SILVER // ROSE GOLD // GUNMETAL

Fiesole collection photographed by Phillip R. Lopez

## TYLER ELLIS CONTACTS

### Bespoke Requests

[bespokeconcierge@tylerellis.com](mailto:bespokeconcierge@tylerellis.com)

310.592.9145

### Sales

Jane Shriner

[jane@tylerellis.com](mailto:jane@tylerellis.com)

317.507.1832

### U.S. Press

[press@tylerellis.com](mailto:press@tylerellis.com)

### Europe & Asia Press

Alex Shah

[as@alexshah.co.uk](mailto:as@alexshah.co.uk)

### Middle East Press

[tylerellispress@tohpr.com](mailto:tylerellispress@tohpr.com)

### Celebrity/VIP Relations

Aimee Carpenter

[carpenteraimee88@gmail.com](mailto:carpenteraimee88@gmail.com)

### Follow Us

[@tylerellisofficial](https://www.instagram.com/tylerellisofficial)



[tylerellis.com](http://tylerellis.com)

