

Tyler Ellis
TYLER ELLIS®

SPRING/SUMMER 2019





ABOUT THE COLLECTION

SPRING/SUMMER 2019

Inspired by London's Belgravia neighborhood—where Tyler Ellis once lived—the Spring/Summer '19 collection mixes edgy metallics with classic silhouettes, illuminating the city's eclectic global glamour. Incorporating vibrant materials such as stingray, hair calf, chainmail and feathers in a palette of silvers and golds, Tyler Ellis creates the perfect day-to-night must have handbags for the modern, worldly woman.

ABOUT THE DESIGNER

Tyler Ellis, the daughter of revered fashion designer Perry Ellis, channels her fascination for traveling into an endless current of inspiration. Her eponymous handbag line is defined by an array of luxe materials and intricate details that embody her worldly palette. The company launched in New York in 2011, and is now based in Los Angeles, where Tyler grew up and currently resides with her husband, Ben, and their three puppies. Tyler's designs are brought to life in a father/son owned and operated atelier outside of Florence, Italy, where the hands of fastidious artisans produce perfection no machine can mimic. From hand-stitching and hand-painted edges to custom hardware created specifically for each design, Tyler Ellis handbags represent an ardent commitment to couture and quality craftsmanship that has earned a cult following. The designs look equally at home on the red carpet as well as in everyday life and are carried by influential women worldwide. As a personal homage to Tyler's father, Perry Ellis' handwriting appears as the company logo; and most dear to Tyler, he is a part of everything she creates!



Personal Touch · Timeless Appeal · Everlasting Luxury



ROSE GOLD PYTHON



AIMEE CLUTCH

The Aimee Clutch is designed with a magnetic front flap snap closure, hidden exterior pocket and a detachable cross-body strap. It features our custom infinity bar closure and signature Thayer blue satin lining. Top handle optional.



Personal Touch · Timeless Appeal · Everlasting Luxury



ROSE GOLD PYTHON



SILVER/BLACK EEL

AVA BOX

The Ava Box is a rectangular hard clutch, featuring a top handle and a detachable cross-body strap. It is designed with interior pockets and a mirror, and features our custom pinecone closure and signature Thayer blue leather lining.



Personal Touch · Timeless Appeal · Everlasting Luxury





SILVER CHAINMAIL



FEATHERS



SILVER EEL



METALLIC SILVER/CREAM HAIR CALF

GRACE POUCH

The Grace is a soft pouch with a chain or leather drawstring closure. It is offered with or without a custom metal base and is lined in our signature Thayer blue satin.



Personal Touch · Timeless Appeal · Everlasting Luxury



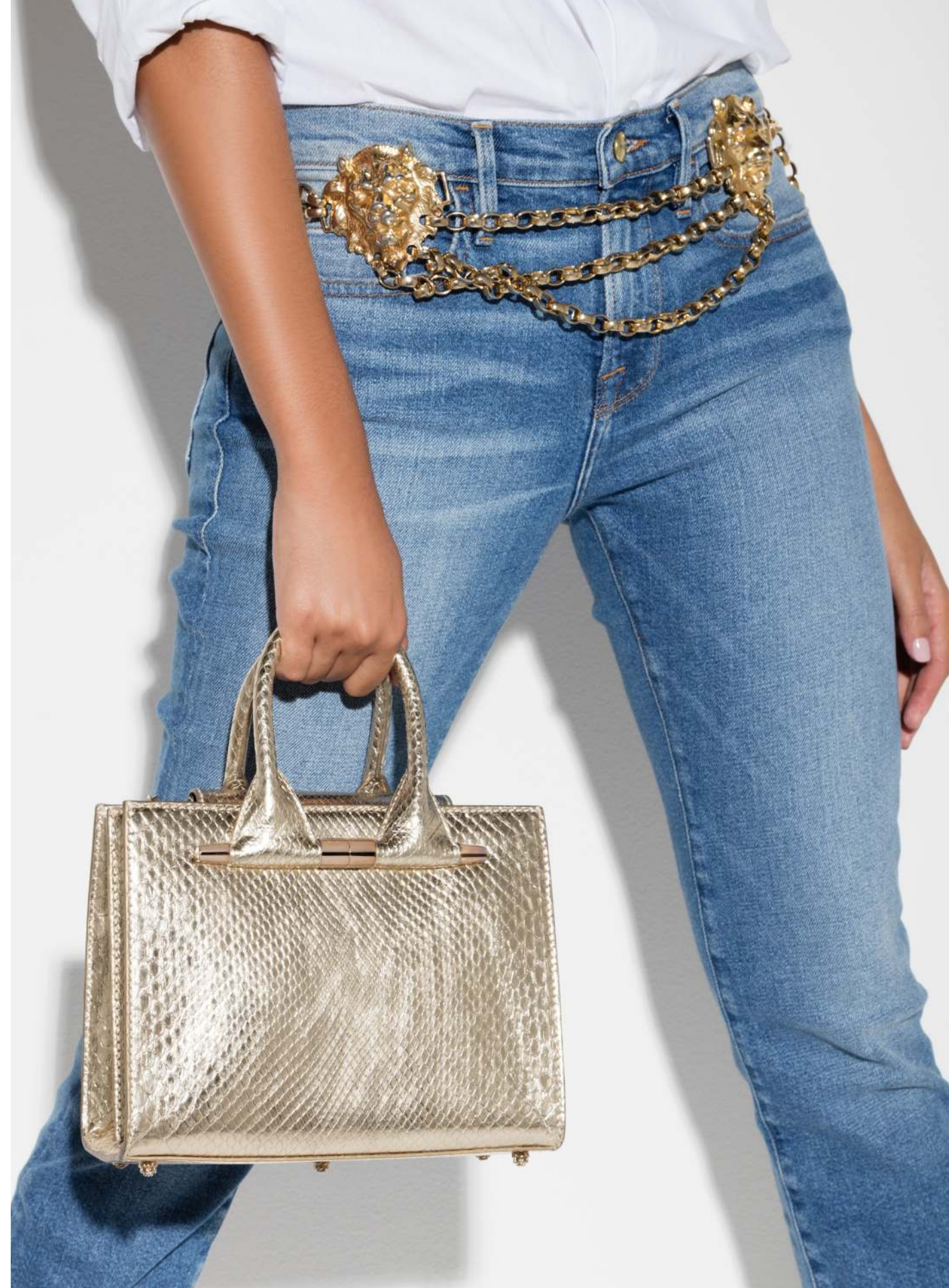
BRONZE PYTHON

HELENA TOTE

The Helena is a tri-compartment, double-handle, structured tote with built-in phone charging capabilities. It is designed with a center zip-pocket, phone and credit card slots, an extra-long key fob and detachable guitar strap. It features our signature Thayer blue suede lining and our custom infinity bars as exterior accents.



Personal Touch · Timeless Appeal · Everlasting Luxury





BRONZE/BLACK PATENT PYTHON

JAMIE DOCTOR

The Jamie Doctor is a double handle structured bag with an optional guitar strap. It features our slide-lock closure, pinecone feet, interior pocket and our signature Thayer blue suede lining. Metal tab can be engraved.



Personal Touch · Timeless Appeal · Everlasting Luxury



SILVER EEL



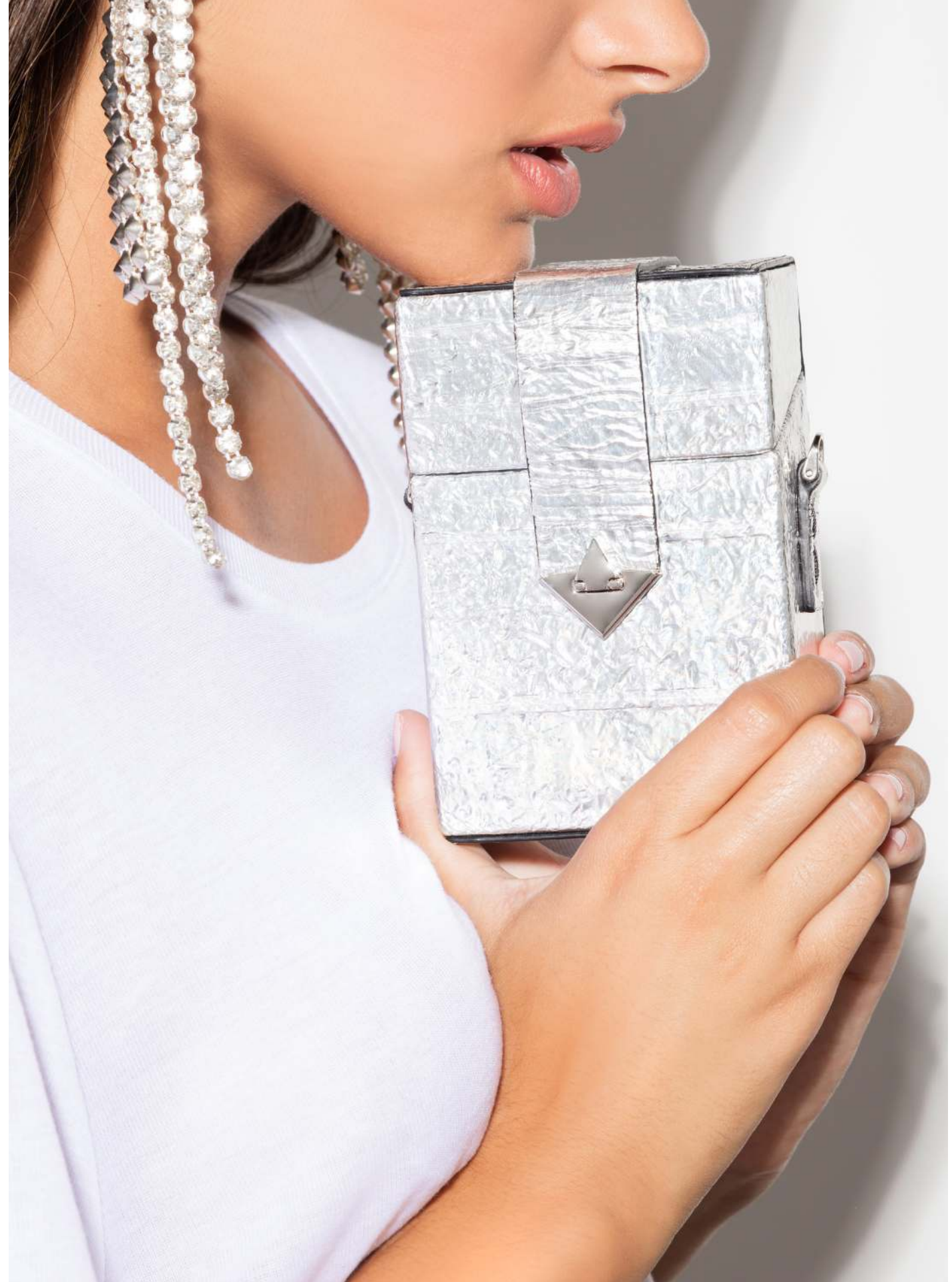
METALLIC SILVER/CREAM HAIR CALF

KELLY BOX

The Kelly Box is a hard-framed, vertical cross-body bag. It features an interior mirror, card slots, our custom spear-lock closure, a detachable chain and our signature Thayer blue leather lining.



Personal Touch · Timeless Appeal · Everlasting Luxury





GOLD/SILVER STINGRAY



SILVER HAIR CALF

LEE POUCHET

The Lee Pouchet is a soft clutch designed with a triangular front flap and a magnetic snap closure. It features a hidden exterior pocket, a detachable cross-body chain and our signature Thayer blue satin lining. Guitar strap can be ordered at an additional cost.



Personal Touch · Timeless Appeal · Everlasting Luxury



SILVER HAIR CALF

LJ TOTE

The LJ is a semi-structured tote with a top handle and a front flap featuring our signature spear-lock closure. It is designed with a hidden back pocket, interior pockets, a detachable chain/strap, our custom pinecone feet and our signature Thayer blue suede lining.



Personal Touch · Timeless Appeal · Everlasting Luxury





CREAM CRUSHED VELVET

MEME POUCH

The Meme is a soft pouch with a Lucite top handle and a half-framed custom metal pinecone closure. It is designed with a detachable cross-body chain, fringe detail attached to the base and is lined in our signature Thayer blue satin.



Personal Touch · Timeless Appeal · Everlasting Luxury



GOLD/SILVER STINGRAY



GOLD PYTHON

PERRY CLUTCH

The Perry Clutch is a hard-framed, emerald shaped clutch, with a detachable cross-body chain and interior pockets. It features our custom pinecone closure and our signature Thayer blue leather lining.



Personal Touch · Timeless Appeal · Everlasting Luxury





VERONICA CLUTCH

The Veronica is a semi-structured clutch designed with a front flap and a magnetic snap closure. It features a hidden back pocket, corner metal accents, a detachable chain and our signature Thayer blue satin lining.



Personal Touch · Timeless Appeal · Everlasting Luxury



ROSE GOLD PYTHON

RITA TOTE

The Rita is a semi-structured tote with a flexible top handle and detachable chain accented with a leather detail for shoulder comfort. It is designed with a front flap that is finished off with our customized spear-lock closure. It features a hidden back pocket, an internal zipper pocket and our signature Thayer blue leather lining.



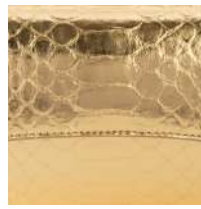
TYLER ELLIS

MATERIALS

SPRING/SUMMER 2019



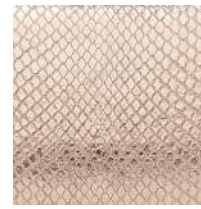
BLACK PATENT PYTHON



GOLD PYTHON



BRONZE PYTHON



ROSE GOLD PYTHON



GOLD/SILVER STINGRAY



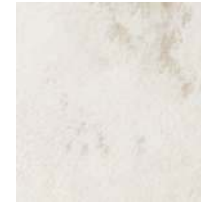
SILVER CHAINMAIL



GOLD CHAINMAIL



SILVER EEL



METALLIC SILVER/ CREAM HAIR CALF



SILVER HAIR CALF



FEATHERS

CRUSHED VELVET



BLACK



WHITE



CHOCOLATE



TAUPE



CREAM



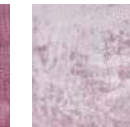
NAVY



MAGENTA



ROSE



LIGHT PINK

HARDWARE OPTIONS

GOLD/SILVER/ROSE GOLD/GUNMETAL

BAG DIMENSIONS

AIMME CLUTCH
LARGE FLAT
11.0" wide x 5.0" high x
1.0" deep

AVA BOX
7" wide x 5" high x 2.5"
deep

GRACE POUCH
MINI
5.5" wide x 7.5" high x
5.5" deep

GRACE POUCH
SMALL (With Strap
and Metal Base)
6" wide x 8.5" high x
6" deep

HELENA
SMALL
9" wide x 7" high x 4.5"
deep

JAMIE DOCTOR
SMALL
7.5" wide x 5.0" high x
4.0" deep

KELLY BOX
SMALL
4.5" wide x 6" high x
2" deep

KELLY BOX
LARGE
4.5" wide x 7.5" high x
2.5" deep

LEE POUCHET
SMALL
8.0" wide x 5.0" high x
2.0" deep

LEE POUCHET
LARGE
10.0" wide x 6.5" high x
3.0" deep

LJ
SMALL
6" wide x 5.25" high x
2.75" deep

MEME
SMALL
10.25" wide x 9.85" high
x 1.4" deep

PERRY CLUTCH
SMALL
8.0" wide x 5.0" high x
2" deep

PERRY CLUTCH
LARGE
10.0" wide x 5.0" high x
2" deep

VERONICA
LARGE
11.0" wide x 5.0" high
x 2.0" deep

RITA
SMALL
7" wide x 5.7" high x
2.75" deep



Personal Touch · Timeless Appeal · Everlasting Luxury





Tyler Ellis
TYLER ELLIS®

SPOTTED



ALISHA BOE
JAMIE DOCTOR



ALLISON JANNEY
PERRY CLUTCH



ALLISON WILLIAMS
AIMEE CLUTCH



ANNA KENDRICK
PERRY CLUTCH



CATE BLANCHETT
IVY TOTE



CATE BLANCHETT
IVY TOTE



CHRISSEY TEIGEN
PERRY CLUTCH



CINDY CRAWFORD
PERRY CLUTCH



DEMI MOORE
PERRY CLUTCH



DIANE KRUGER
PERRY CLUTCH



ELISABETH MOSS
LEE POUCHET



EMANUELLE CHRIQUI
VERONICA CLUTCH



EMILY BLUNT
LEE POUCHET



EMILY RATAJKOWSKI
LEE POUCHET



GABRIELLE UNION
PERRY CLUTCH



GIGI HADID
AVA BOX



GIGI HADID
PERRY CLUTCH



GRETA GERWIG
GRACE POUCH



JENNA DEWAN
LEE POUCHET



JULIA ROBERTS
IVY TOTE



KAIA GERBER
CANDY CLUTCH



KARLIE KLOSS
LILY CLUTCH



LAURA DERN
LEE POUCHET



LESLIE BIBB
LEE POUCHET



LILY JAMES
AIMEE CLUTCH



LILY JAMES
LEE POUCHET



LUCY HALE
PERRY CLUTCH



LUCY LIU
CAROLINE TOTE



LUPITA NYONG'O
PERRY CLUTCH



MADELAINE PETSCH
GRACE POUCH



MANDY MOORE
KELLY BOX



MERYL STREEP
PERRY CLUTCH



MICHELLE MONAGHAN
LEE POUCHET



MICHELLE PFEIFFER
AIMEE CLUTCH



MOLLY SIMS
LILY CLUTCH



NINA DOBREV
CANDY CLUTCH



NAOMI WATTS
LILY CLUTCH



OCTAVIA SPENCER
VERONICA CLUTCH



OLIVIA MUNN
PERRY CLUTCH



OPRAH WINFREY
LILY CLUTCH



PRIYANKA CHOPRA
KELLY BOX



SALMA HAYEK
PERRY CLUTCH



SARAH RAFFERTY
LEE POUCHET



SARAH PAULSON
LEE POUCHET



SARAH PAULSON
PERRY CLUTCH



SHARON STONE
AIMEE CLUTCH



TRACEE ELLIS ROSS
PERRY CLUTCH



TYLER ELLIS
CONTACT

WEBSITE - www.tylerellis.com

INSTAGRAM - [@tylerellisofficial](https://www.instagram.com/tylerellisofficial)

SALES - jane@tylerellis.com
Jane Shriner

US PRESS - press@tylerellis.com
Amanda Eberstein

UK PRESS - as@alexshah.co.uk
Alex Shah



Personal Touch · Timeless Appeal · Everlasting Luxury