



FALL/WINTER 2018

*Tyler Ellis*

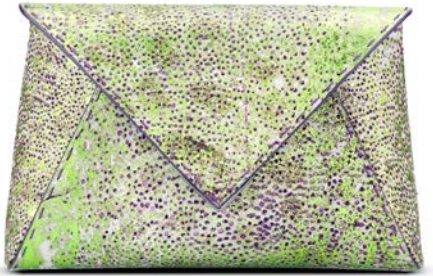


**BELFAST COLLECTION**  
**FALL/WINTER 2018**

Tyler Ellis explores her heritage and connection to the beauty of Northern Ireland. Outside of Belfast, the lush landscape and purity of the terrain provide a resounding solace, and it is that powerful feeling that she embodies in her new collection.

**ABOUT THE DESIGNER**

Los Angeles-based handbag designer Tyler Ellis, the daughter of revered fashion designer Perry Ellis, harnesses her jet-setting lifestyle into an endless current of inspiration. Her fresh interpretations of classic silhouettes are brought to life in Florence, Italy, where they are handmade by some of the world's top artisans. Marrying the finest materials with a sharp aesthetic, each handbag represents an ardent commitment to craftsmanship that has earned Tyler a cult following. As a personal homage to her father, Perry's handwriting appears on the company logo; and most dear to Tyler, it is included within every one of her designs.

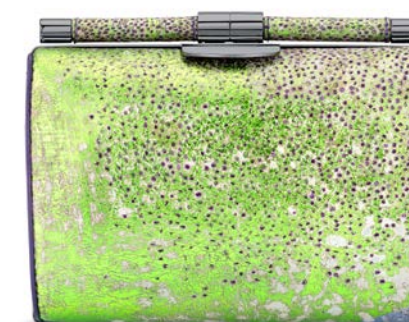


## LEE POUCHET SMALL/LARGE

The Lee Pouchet is designed with a triangular front flap closure, hidden exterior pocket, optional cross-body chain, and features our signature "Thayer Blue" satin lining.

*\*Pictured here in Metallic Purple/Green Fish and Butterfly Lizard.*





## **ANJULI CLUTCH**

The Anjali is a structured oval clutch, with an optional cross-body chain, and interior pocket. It features our signature slide-lock closure and "Thayer Blue" satin lining. Metal tab can be engraved.

*\*Pictured here in Metallic Purple/Green Fish.*





## **AIMEE CLUTCH**

The Aimee Clutch is designed with a front flap clasp, hidden exterior pocket, and optional cross-body chain. It features our infinity bar closure and signature "Thayer Blue" satin lining.

*\*Pictured here in Metallic Pink Python.*



## PERRY CLUTCH

SMALL/LARGE

The Perry Clutch is an emerald-shaped clutch with a detachable cross-body chain. It features interior pockets and our signature "Thayer Blue" satin lining and pinecone closure.

*\*Pictured here in Magenta/Black/Green Python.*









## CANDY CLUTCH

MINI/SMALL

The Candy Clutch is designed with a three-quarter front flap, hidden back pocket, internal zip pocket, and a detachable cross-body strap. It features our infinity bar closure and signature "Thayer Blue" satin lining.

*\*Pictured here in Magenta/Black/Green Python.*



## JANE SADDLE

The Jane Saddle has a rounded three-quarter front flap, attached shoulder strap, a hidden exterior pocket, and multiple interior pockets. It features our infinity bar closure and signature "Thayer Blue" suede lining.

*\*Pictured here in Magenta/Black/Green Python.*





## MINDY BOX

The Mindy Box is a rectangular hard clutch, with a detachable cross-body strap. It's designed with interior pockets and a mirror. It features our signature spear-lock closure and "Thayer Blue" leather lining.

*\*Pictured here in Magenta/Black/Green Python.*



## ALEX WALLET

The Alex Wallet is designed with a detachable cross-body chain, interior credit card slots and pinecone pull zip pocket. It features our signature spear-lock closure and "Thayer Blue" leather lining.

*\*Pictured here in Olive Green Alligator.*





## AVA BOX

The Ava Box is a rectangular hard clutch, with a detachable cross-body strap. It's designed with interior pockets and a mirror. It features our signature pinecone closure and "Thayer Blue" leather lining.

*\*Pictured here in Butterfly Lizard and Black Plonge Leather.*



## DEBI BACKPACK

The Debi is a semi-structured backpack with a top flap and drawstring closure. It's designed with a zip around bottom storage compartment and adjustable shoulder straps. It features our signature spear-lock closure and "Thayer Blue" suede lining.

*\*Pictured here in Black and Magenta Crushed Velvet.*





**KELLY BOX**  
SMALL/LARGE

The Kelly Box is a hard framed, vertical cross-body bag. It features an interior mirror, card slots, and our signature spear-lock closure.

*\*Pictured here in Black and Magenta Crushed Velvet.*



## JAMIE DOCTOR

The Jamie Doctor is a double handle, structured bag, with an optional cross-body strap, and interior pocket. It features our signature slide-lock closure, pinecone feet and "Thayer Blue" suede lining. Metal tab can be engraved.

*\*Pictured here in Butterfly Lizard and Black Lizard.*







## LJ TOTE

The LJ is single handle tote with a front flap and our signature spear-lock closure. It's designed with a hidden back pocket, interior pockets, and detachable strap. It features our signature pinecone feet and "Thayer Blue" suede lining.

*\*Pictured here in Butterfly Lizard and Olive Green Alligator.*

# TYLER ELLIS

## MATERIALS

### FW18 EXCLUSIVES



### CRUSHED VELVET



### SIGNATURE PLOGE LEATHER



### HARDWARE OPTIONS

GOLD/SILVER/ROSE GOLD/GUN METAL

### PRODUCT DIMENSIONS

AIMEE FLAT CLUTCH LARGE  
11" X 5" X 1.3"

DEBI BACK PACK  
8.5" X 11" X 4"

LEE POUCHET LARGE  
10" X 6.5" X 3"

ALEX WALLET  
7.5" X 4.5" X 1.5"

JAMIE DOCTOR BAG SMALL  
7.5" X 5" X 4"

LILY CLUTCH  
8.5" X 5.5" X 2"

ANJULI CLUTCH  
7.5" X 5" X 3.25"

JANE SADDLE BAG SMALL  
8" X 5.5" X 2.5"

LJ LARGE  
12" X 9" X 5"

AVA BOX  
7" X 5" X 2.5"

KELLY SMALL  
4.5" X 6" X 2"

MINDY BOX  
8.5" X 5.3" X 2.5"

CANDY CLUTCH MINI  
5" X 3.5" X 1.5"

KELLY LARGE  
4.5" X 7.5" X 2.5"

PERRY CLUTCH SMALL  
8.0" X 5" X 2"

CANDY CLUTCH SMALL  
7" X 4" X 2.5"

LEE POUCHET SMALL  
8.0" X 5" X 2"





*Hyle Ellis*  
CELEBRITY



SALMA HAYEK  
LILY CLUTCH



HEIDI KLUM  
LEE POUCHET



MERYL STREEP  
PERRY CLUTCH



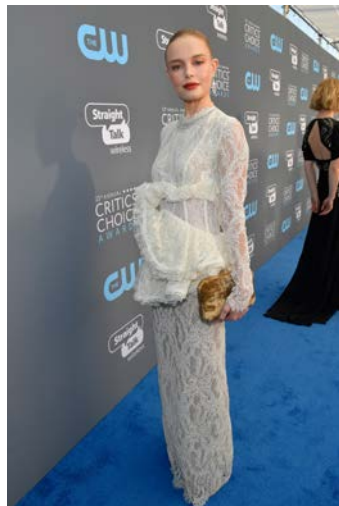
MANDY MOORE  
LEE POUCHET



REESE WITHERSPOON  
LEE POUCHET



SHARON STONE  
AIMEE CLUTCH



KATE BOSWORTH  
LILY CLUTCH



LUPITA NYONG'O  
PERRY CLUTCH



DIANE KRUGER  
PERRY CLUTCH



ALLISON WILLIAMS  
AIMEE CLUTCH



VIOLA DAVIS  
LILY CLUTCH



ALLISON JANNEY  
PERRY CLUTCH



JASMINE SANDERS  
CANDY CLUTCH



AMANDA CREW  
LILY CLUTCH



CHRISSEY TEIGEN  
PERRY CLUTCH



OCTAVIA SPENCER  
PERRY CLUTCH



JESSICA BIEL  
LILY CLUTCH



GIGI HADID  
AVA BOX



JORDANA BREWSTER  
AIMEE CLUTCH



SOPHIA RESING  
LEE POUCHET



OLIVIA MUNN  
PERRY CLUTCH



KERI RUSSELL  
LILY CLUTCH



HAILEE STEINFELD  
PERRY CLUTCH



NADINE LEOPOLD  
PERRY CLUTCH



KATE MARA  
PERRY CLUTCH



TRACEE ELLIS ROSS  
PERRY CLUTCH



VANESSA HUDGENS  
AIMEE ROUND



ELISABETH MOSS  
PERRY CLUTCH



CINDY CRAWFORD  
PERRY CLUTCH



JULIA ROBERTS  
AIMEE ROUND



REESE WITHERSPOON  
PERRY CLUTCH



NINA DOBREV  
CANDY CLUTCH



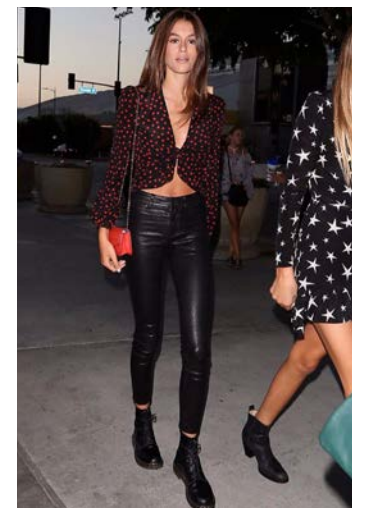
EMILIA CLARKE  
LEE POUCHET



DEMI MOORE  
LEE POUCHET



GABRIELLE UNION-WADE  
MARILYN TOTE



KAIA GERBER  
CANDY CLUTCH

**TYLER ELLIS**  
CONTACT@TYLERELLIS.COM

INSTAGRAM

WEBSITE

+1 (212) 956-7287

**PRIVATE SALES INQUIRIES**

JANE SHRINER  
JANE@TYLERELLIS.COM

+1 (317) 507-1832

**WHOLESALE INQUIRIES**

MARIA KASTANI  
MARIA@KASTANI.BIZ  
+44 (0) 7775 715 939

**US PRESS**

AMANDA EBERSTEIN  
PRESS@TYLERELLIS.COM

**FOREIGN PRESS**

ALEX SHAH  
AS@ALEXSHAH.CO.UK

**PHOTOGRAPHY**

PHILLIP R. LOPEZ

