



Tyler Ellis
TYLER ELLIS®

CASINO DE MONTE-CARLO
AUTUMN // WINTER 2021



Photographed by Phillip R. Lopez



ABOUT THE DESIGNER

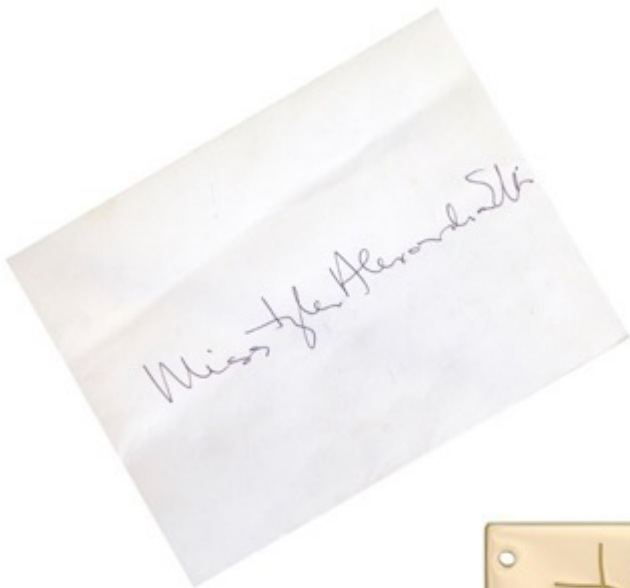
Tyler Ellis, the daughter of revered fashion designer Perry Ellis, began her eponymous handbag line in 2011, quickly becoming the most carried designer on Hollywood's red carpets. Brought to life in a father/son owned and operated atelier in Le Siedi, Italy, *Tyler Ellis* represents an ardent commitment to quality craftsmanship, unique designs, timeless appeal and practical functionality – a return to true luxury.

Tyler's designs look equally at home on the red carpet as well as in everyday life and are carried by influential women worldwide.

She strongly believes - *it's all about the details.*



Photographed by Erica Lennard
Perry and Tyler Ellis in his New York City townhouse, 1985



The envelope Perry Ellis addressed to Tyler on her 1st birthday, from which his handwriting was captured. As a personal homage to her father, Perry's handwriting appears as the company logo.

Most dear to Tyler, he is a part of everything she creates.



Fontana della Pigna, Pigna Court, Vatican City, Italy

THE SYMBOLIC PINECONE

The Fontana della Pigna, the iconic bronze statue that sits in Pigna Court at the Vatican, is the inspiration behind the Pinecone that has become the symbolic image of the Ellis brand. Pinecones embody the ancient metaphor of the third eye, representing the highest form of spiritual awakening, perfection and much more. The symbol can be found throughout historic art and architecture, from the tops of Pharaoh's staffs, to unique decorations on European dwellings. Pinecones adorn the zippers, feet and fasteners of many of Tyler's designs. These gorgeous details went through multiple hand carved wax castings to create our signature Pinecone.



CASINO DE MONTE-CARLO
Autumn // Winter 2021

Inspired by the Belle Epoque architecture and interiors of the famed Casino de Monte-Carlo, the Autumn/Winter 2021 collection combines the glamour, opulence and excess of Monaco with Tyler Ellis' signatures of discerning luxury, functional design and artisanal craftsmanship.

Like a modern-day Mata Hari oozing mystery, charm and decadence, the new collection imbues unique feminine silhouettes with head turning materials in sumptuous textures. From lust-worthy iridescent Chameleon python and tactile quilted patent and metallic antiqued leathers to shimmering crystal medleys and sleek Black Winter fox, each design is intended to entice and seduce the senses. An alluring collection that whets the appetite of the enchanting temptress.



Icy Blue Crushed Velvet



Platinum Crushed Velvet

Signature Lee Pouchet Large

The Lee Pouchet is our signature envelope-shaped clutch with a triangular front flap and a magnetic snap closure. It fits the large iPhone and has a hidden exterior pocket, an optional cross-body chain and features our signature Thayer blue lining.



Stella Handbag Petite
Iridescent Pearl Leather



STELLA HANDBAG PETITE

The Stella is a structured tri-compartment handbag with a magnetic closure and an optional cross-body chain with a leather or exotic wrapped shoulder accent. It fits the large iPhone, has custom exterior metal detailing, interior pockets, an extra-long key fob and features our signature Thayer Blue lining.





Perry Clutch Small
Silver Metal



Perry Clutch Large
Glacier Blue Python



Perry Clutch Small
Icy Blue Crushed Velvet

PERRY CLUTCH Small/Large

The Perry is a hard-framed clutch designed with interior pockets and an optional cross-body chain. Its elegant emerald shape is inspired by Tyler's own engagement ring and named after her father, Perry Ellis. It fits the large iPhone and features our signature Pinecone Closure and Thayer Blue lining.



Winnie Handbag Small
Glacier Blue Python



WINNIE HANDBAG SMALL

The Winnie is a tri-compartment, double-handle, semi-structured handbag accented with our custom Bond Closure. It is designed with a center zip-pocket, phone and interior slots, an extra-long key fob and a detachable strap with a leather or exotic wrapped shoulder accent. It features our signature Pinecone Feet and Thayer Blue lining.

Arctic Blue Leather



Jane Saddle Small
Iron Antiqued Leather



Jane Saddle Petite
Chrome Antiqued Leather

JANE SADDLE **Petite/Small**

The Jane Saddle is designed with a rounded three-quarter front flap, a magnetic snap closure and our custom Infinity Bar. It has a hidden exterior pocket, an optional chain with a leather or exotic wrapped shoulder accent, interior pockets and features our signature Thayer Blue lining.



LJ Handbag Small
Nude Patent Leather



LJ HANDBAG

Small/Large

The LJ is a semi-structured handbag with a triangular front flap finished with our custom Spear-lock Closure. It is designed with a wrapped top-handle, handmade "whip-stitch" detail and an optional chain with a leather or exotic wrapped shoulder accent. It has a hidden back pocket, interior pockets and features our signature Pinecone Feet and Thayer Blue lining.



HARPER HANDBAG

Petite/Small

The Harper is a semi-structured rectangular handbag with a front flap finished with a magnetic snap closure and our custom Infinity Bar. The bag fits the large iPhone and is designed with a flexible top handle, a metal fringe detail and an optional chain with a leather or exotic wrapped shoulder accent. It has a hidden back pocket, an internal pocket and features our signature Thayer Blue lining.

Harper Handbag Small
Nude Quilted Patent Leather



Nude Quilted Patent Leather



CAROLE HANDBAG

The Carole is a semi-structured, tri-compartment handbag, designed with two zippered pockets, each showcasing our custom Pinecone Pulls and a spacious center pocket. It has an optional cross-body chain with a leather or exotic wrapped shoulder accent and features our signature Pinecone Feet and Thayer Blue lining.



Aimee Clutch
Nude Quilted Patent Leather



AIMEE CLUTCH

The Aimee is a clutch designed with a three-quarter front flap, a magnetic snap closure and is finished with our custom Infinity Bar. It fits the large iPhone, has a hidden exterior pocket, an optional cross-body chain and features our signature Thayer Blue lining.



Black Quilted Patent Leather



Tiffany Backpack Petite
Chrome Quilted Antiqued Leather



Tiffany Backpack Large
Nude Quilted Patent Leather



TIFFANY BACKPACK Petite/Large

The Tiffany is a semi-structured backpack with a front flap finished with a magnetic snap closure and our custom Infinity Bar. The bag is designed with a metal fringe accent, fits the large iPhone, has a hidden back pocket, an internal pocket and features our signature Thayer Blue lining.



Tiffany 'Classica' Shoulder Bag Medium
Black Quilted Patent Leather



Tiffany 'Classica' Shoulder Bag Petite
Black Quilted Patent Leather

TIFFANY 'CLASSICA' SHOULDER BAG Petite/Medium/Jumbo

The Tiffany is a semi-structured rectangular shoulder bag with a front flap finished with a magnetic snap closure and our custom Infinity Bar. The bag is designed with a chain and a leather or exotic wrapped shoulder accent, has a hidden back pocket, an internal pocket and features our signature Thayer Blue lining. The Tiffany is available with or without the metal tassel detail.



Tiffany 'Classica' Shoulder Bag Jumbo
Jet Black Quilted Leather



Jamie Doctor Micro-Mini
Shimmering Black Stingray & Jet Black Leather



Jamie Doctor Medium
Black Glitter Lizard & Jet Black Leather



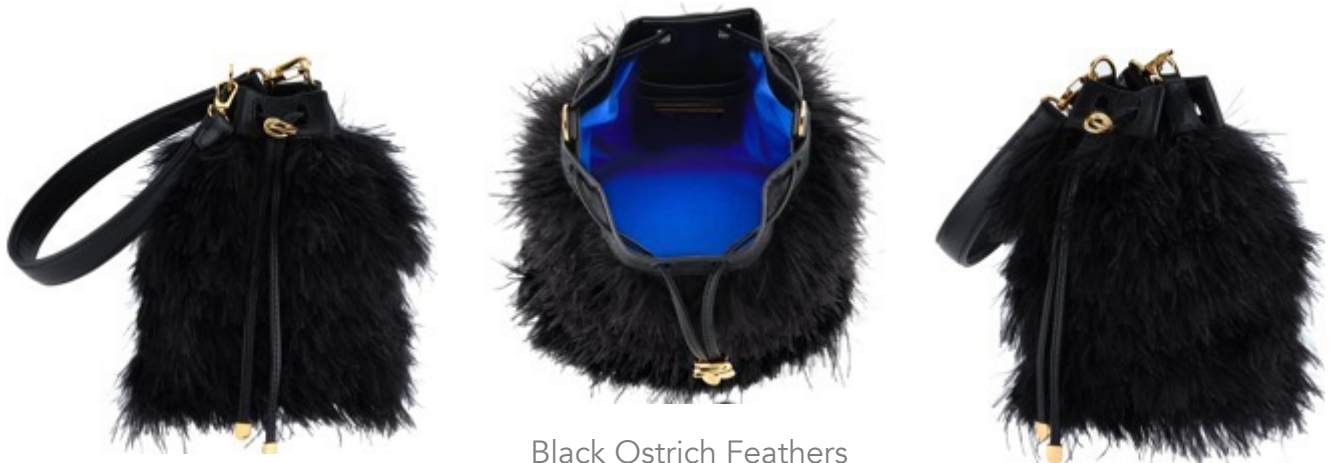
JAMIE DOCTOR Micro-Mini/Small/Medium

The Jamie Doctor is a semi-structured metal-framed double handled handbag designed with our custom Slide-lock Closure and Pinecone Feet. It has interior pockets, an optional cross-body strap with a leather or exotic wrapped shoulder accent and is finished with our signature Thayer Blue lining. The metal tab can be engraved for an additional fee.



GRACE BUCKET

The Grace is a soft pouch with a detachable leather handle. It has a drawstring pull finished with our custom Continuum Closure. It fits the large iPhone, has internal card slots and features our signature Thayer Blue lining. The Grace in Ostrich Feathers features our custom Bond Closure.



Black Ostrich Feathers



Chrome Antiqued Leather

VERONICA CLUTCH

The Veronica is designed with a three-quarter front flap and a magnetic snap closure.

The clutch features a rounded back providing an extra spacious interior. It fits the large iPhone has a hidden back pocket, customized metal cap accents, an optional chain and features our signature Thayer Blue lining.



Black Glitter Lizard



Chrome Antiqued Leather

AVA HANDBAG

The Ava is a semi-structured rectangular handbag designed with a top handle and a zipper closure adorned with our symbolic Pinecone Pulls. It fits the large iPhone, has an interior zipper pocket, an optional cross-body chain with a leather or exotic wrapped shoulder accent and features our custom Pinecone Feet and signature Thayer Blue lining.



Caroline Tote
Chameleon Python



Dove Grey Glossy Python



Chameleon Python

CAROLINE TOTE MEDIUM

The Caroline is a semi-structured tote with a zipper closure that showcases our Pinecone Pull. It is designed with our internal super pocket and zippered pocket, two hidden exterior pockets, an optional cross-body strap, a computer slot and features our signature Pinecone Feet and Thayer Blue lining.



Rita Handbag Small
Dove Grey Glossy Python



Rita Handbag Small
Chameleon Python



RITA HANDBAG Small/Large

The Rita is a semi-structured handbag with a triangular front flap finished with our custom Spear-lock Closure. It is designed with a flexible top handle and an optional chain with a leather or exotic wrapped shoulder accent. It fits the large iPhone, has a hidden back pocket, an interior pocket and features our signature Thayer Blue lining.



Stella Handbag Tall
Dove Grey Glossy Python



STELLA HANDBAG TALL

The Stella Tall is a structured handbag with a magnetic closure and an optional cross-body chain with a leather or exotic wrapped shoulder accent. It fits the large iPhone, has custom exterior metal detailing, interior pockets, an extra-long key fob and features our signature Thayer Blue lining.



Bristol Tote Jumbo
Arabian Black Cashmere

BRISTOL TOTE **Large/Jumbo**

The Bristol is a lightweight tote designed with a magnetic closure, an internal zippered pocket adorned with our symbolic Pinecone Pull and is finished in our signature Thayer Blue lining. The Jumbo features a zipper closure and an interior computer slot.



Poppy Handbag Small
Black Winter Fox



POPPY HANDBAG SMALL

The Poppy is a soft handbag designed with a Lucite handle and our custom half-metal frame finished with our Pinecone Closure. It fits the large iPhone, has a detachable metal chain and features our signature Thayer Blue lining.



Lee Pouchet Small
Garnet Satin



Lee Pouchet Small
Starry Night Swarovski Sand Crystals

SIGNATURE LEE POUCHET SMALL

The Lee Pouchet is our signature envelope-shaped clutch with a triangular front flap and a magnetic snap closure. It fits the large iPhone and has a hidden exterior pocket, an optional cross-body chain and features our signature Thayer blue lining.



Lee Pouchet Small
Deep Garnet Crushed Velvet



Tiffany 'Classica' Petite
Sterling Silver Crystal Medley



TIFFANY 'CLASSICA' SHOULDER BAG PETITE

The Tiffany is a semi-structured rectangular shoulder bag with a front flap finished with a magnetic snap closure and our custom Infinity Bar. The bag fits the large iPhone, is designed with a chain with a leather accent, a hidden back pocket, an internal pocket and features our signature Thayer Blue lining.





Glacier Blue Python

CHRISTY CLUTCH

The Christy is a sleek clutch designed with a three-quarter front flap and is finished with our custom Bond Closure and magnetic snap. It fits the large iPhone, has a hidden exterior pocket, an optional cross-body chain and features our signature Thayer Blue lining.



Iron Antiqued Leather



MATERIALS // DIMENSIONS // CONTACTS

Christy Clutch Emerald Alligator

CASINO DE MONTE-CARLO MATERIALS

LEATHERS



Iridescent Pearl
Quilted



Chrome Antiqued
Quilted



Jet Black
Quilted



Black Quilted
Patent



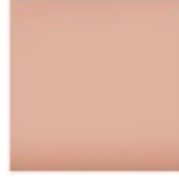
Nude Quilted
Patent



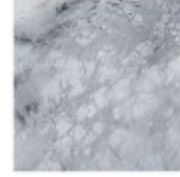
Iridescent Pearl



Arctic Blue



Nude Patent



Chrome Antiqued



Iron Antiqued

EXOTICS



Glacier Blue
Python



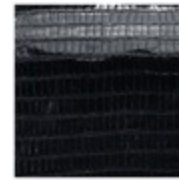
Chameleon
Python



Emerald
Alligator



Shimmering Black
Stingray



Black Glitter
Lizard



Black Winter
Fox

CRUSHED VELVETS & SATINS



Icy Blue
Crushed Velvet



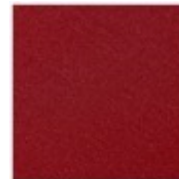
Platinum
Crushed Velvet



Deep Garnet
Crushed Velvet



Platinum
Satin



Garnet
Satin

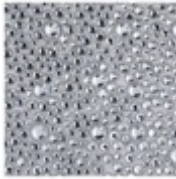


Amethyst
Satin

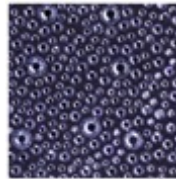
CUSTOM FINISHES



Silver
Metal



Sterling Silver
Crystal Medley



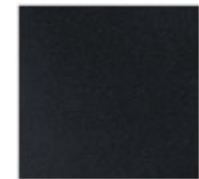
Amethyst
Crystal Medley



Royal Gold
Mosaic



Emperor's Jewel
Mosaic



Arabian Black
Cashmere

HARDWARE OPTIONS

SILVER//GUNMETAL//GOLD

BAG DIMENSIONS

AIMEE CLUTCH

11" x 5.1" x 1"

AVA HANDBAG

7" x 4.6" x 2.5"

BRISTOL TOTE

Large: 15.5" x 11" x 4.5"

Jumbo: 17" x 13" x 7.5"

CAROLE HANDBAG

13" x 9.25" x 6.25"

CAROLINE TOTE

Medium: 13.5" wide at base

(18" wide at top) x 10" x 6"

CHRISTY CLUTCH

9.75" x 4.5" x 1"

GRACE BUCKET

6.25" x 8.5" x 5"

JAMIE DOCTOR

Micro-Mini: 5.75" x 4.5" x 3.1"

Small: 7" x 5.6" x 4.25"

Medium: 10.75" x 7.25" x 5.5"

JANE SADDLE

Petite: 8.75" x 6" x 2"

Small: 8.75" x 7" x 3"

HARPER HANDBAG

Petite: 6.5" x 5" x 2.75"

Small: 8" x 6" x 2.75"

LEE POUCHET

Small: 8" x 5.25" x 1.75"

Large: 10.5" x 6.5" x 2"

*LILY CLUTCH

8.5" x 5.5" x 2.5"

LJ HANDBAG

Small: 9" x 6" x 3.5"

Large: 13.5" x 12.5" x 5.5"

PERRY CLUTCH

Small: 8" x 4.5" x 2"

Large: 10.5" x 5" x 2.5"

*PIPER CLUTCH

8" x 4" x 1.75"

POPPY HANDBAG

Small: 10" x 6" x 5"

RITA HANDBAG

Small: 7.1" x 6" x 3"

Large: 10" x 8" x 4"

STELLA HANDBAG

Petite: 7" x 5.75" x 4.5"

Tall: 8.25" x 7.25" x 3.5"

TIFFANY BACKPACK

Petite: 5.5" x 6.5" x 3.75"

Large: 8.25" x 9.5" x 4"

TIFFANY 'CLASSICA' SHOULDER BAG

Petite: 6.75" x 5" x 2.75"

Medium: 10.5" x 6.5" x 3.75"

Jumbo: 13" x 9" x 4.5"

VERONICA CLUTCH

10" x 4.5" x 2"

WINNIE HANDBAG

Small: 9" x 7" x 4.3"

CONTACTS

BESPOKE REQUESTS

bespokeconciierge@tylerellis.com

310.592.9145

SALES

Jane Shriner

jane@tylerellis.com

317.507.1832

THE AMERICAS PRESS

press@tylerellis.com

EUROPE & ASIA PRESS

Alex Shah

as@alexshah.co.uk

MIDDLE EAST & RUSSIA PRESS

tylerellispress@tohpr.com

CELEBRITY/VIP RELATIONS

Aimee Carpenter

carpenteraimee88@gmail.com

FOLLOW US

[@tylerellisofficial](https://www.instagram.com/tylerellisofficial)



tylerellis.com



Perry Clutch Small
Emperor's Jewel & Royal Gold Mosaic