



## GEMINI

279BB-01 S3 SRC

Standard EN ISO 20345:2011

DGUV 112-191

Sizes 37-50



SRC Slip resistance



A Antistatic



P Perforation resistance



Resistant to an impact of 200 Joules and compression of 15Kn



E Energy absorption at the heel part



FO Fuel oil resistance sole



WRU Water penetration resistant upper

Three-dimensional Spyder-Net lining with moisture absorption and release properties. Its special three-dimensional and non-deformable textile structure ensures lasting comfort, breathability and elasticity.

ICON dual density polyurethane sole designed for excellent performance on wettest and driest grounds. This sole has been tested for slip-resistance in the SATRA laboratories on metal grating and wood scaffold board.



### DUAL DENSITY PU ICON

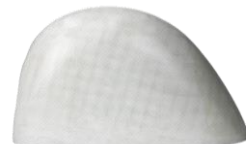
- SRC Slip resistance sole.
- Self-cleaning cleated sole
- Fuel oil resistance sole
- Wide fit for maximum stability and protection.

Reflective material.

Full grain Idrotech leather with high water resistance properties.

Esolight 1.0 polyurethane midsole with reinforced Over cap. The low-density micro-cell polyurethane increase energy absorption, while the outsole is made by high-density Esolight 2.0 polyurethane to guarantee durability and slip resistance.

PZX fiberglass toe cap and anti-puncture Txzero textile insert for extreme lightness, protection and flexibility.



### T-01

- Anatomic insole for more comfort
- Supporting PU foam = Dissipation and Energy Return
- Fully lined with conductive micro-perforated fabric to reduce foam wearing