



MARMORINO

Rivestimento decorativo  
a base di grassello di calce

*Lime based decorative  
wall covering*



# FORMULARIO MARMORINO

CODICE CODE	20 KG	5 KG	1 KG
<b>MA1 XXX</b>	2000	500	100
<b>MA2 XXX</b>	750	187	37
<b>MA4 XXX</b>	240	60	12

CODICE CODE	20 KG	5 KG	1 KG
<b>MA1 XXX + YYY</b>	1300 + 700	325 + 175	65 + 35
<b>MA2 XXX + YYY</b>	500 + 250	125 + 65	25 + 13
<b>MA4 XXX + YYY</b>	160 + 80	40 + 20	10 + 5





# MARMORINO

I colori di questo catalogo sono  
riproducibili anche con il Sistema  
Tintometrico Giolli.

*The colours in this catalogue can  
all be reproduced using the Giolli  
Colour System.*

*ur eyes with*  
**NDER**

**S IF YOU'D**

**P DEAD**

**SECONDS.**

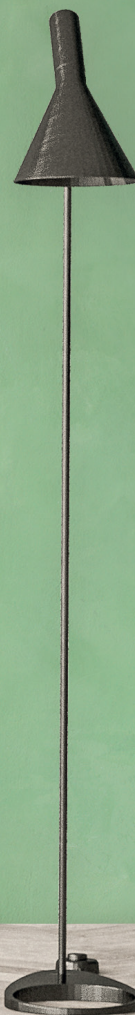
*he world.*

**ANTASTIC THAN ANY**

**EAM**

**FOR IN FACTORIES.**

**RADBURY**



**MARMORINO**

**MA 2 514**



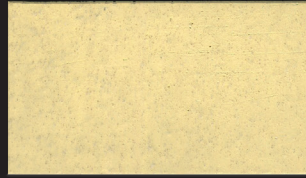
562 + 518

562 + 502

562 + 524

562 + 516

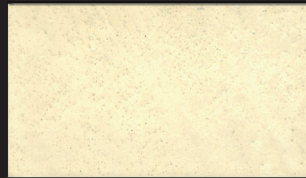
MA1



MA2



MA4



536

510

566

562 + 536

MA1



MA2



MA4



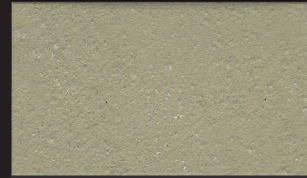
554 + 564

568

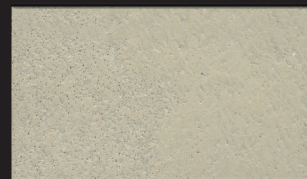
570

528

MA1



MA2



MA4





526

502

508

524

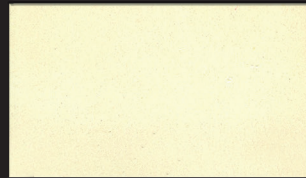
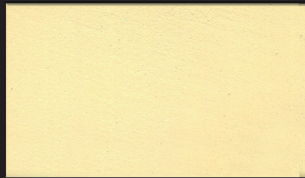
MA1



MA2



MA4



504

518

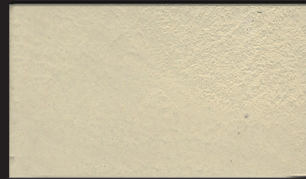
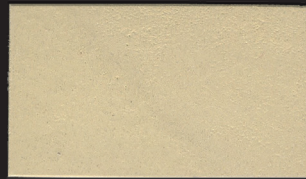
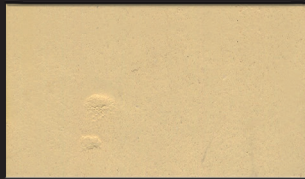
516 + 518

516

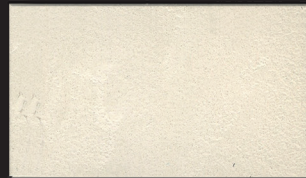
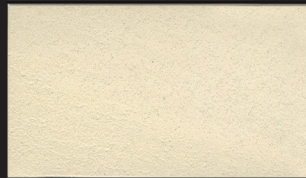
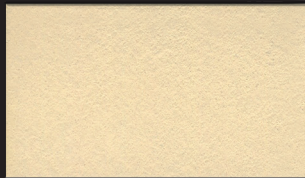
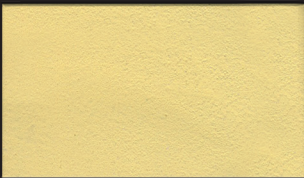
MA1



MA2



MA4



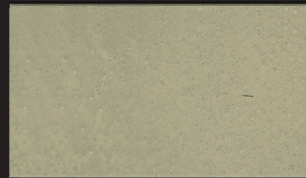
554

528 + 554

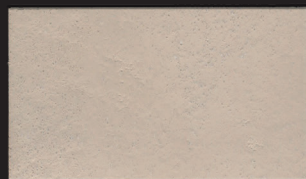
574

572

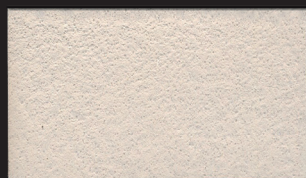
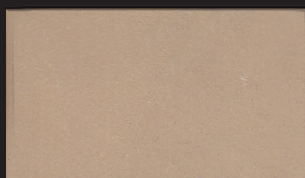
MA1



MA2



MA4





542

552

552 + 538

520

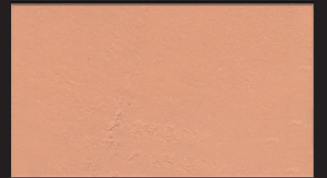
MA1



MA2



MA4



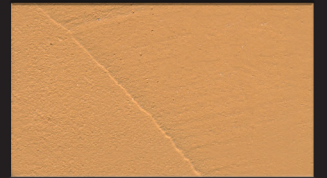
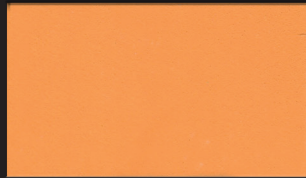
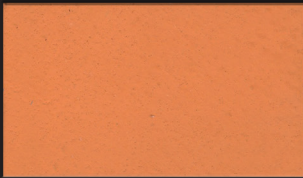
538

534

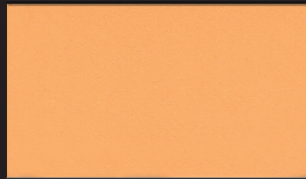
530

532

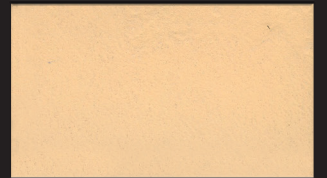
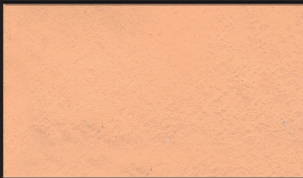
ST1



MA2



MA4



542 + 564

550

548

524 + 548

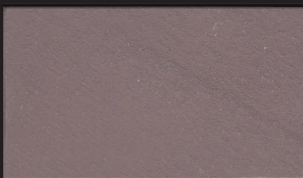
MA1



MA2



MA4





556 + 548

556

556 + 558

512

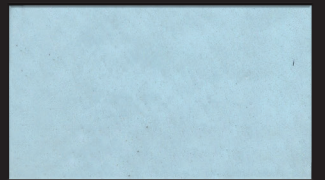
MA1



MA2



MA4



558

560 + 558

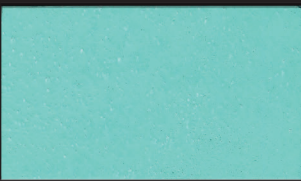
560

514

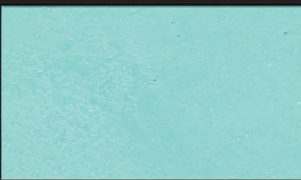
MA1



MA2



MA4



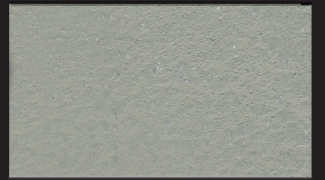
564

576

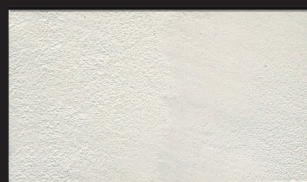
500

578

MA1



MA2



MA4

