

Sliding Gate Operator User's Manual

VIII Packing list

After receiving the gate operator, you should make an unpack-inspection, in which you should check whether the product was damaged. If you have any problem please contact our dealer. you should find the following items in our standard packing.

No.	Item	Quantity
1	Sliding gate operator	1
2	Transmitter	2
3	Release key	1
4	User's manual	1

IX Warranty

1. 12 months warranty from date of purchase, warranty does not cover incorrect installation or damage by fusion, pests or creepy crawlies.

2. Repairs are back to base, customer will pay freight back to base for repairs and we will pay freight back to the customer. There is 3 months warranty on remote controls and all other accessories.
and close the gate manually.

I Please read the instruction before installation

- * Incorrect installation or misuse of the product may cause serious harm to people.
- * Before starting any work on the system, turn off the electricity supply.
- * Keep the gate moving smoothly.
- * Don't make any alterations to the components of the device.
- * The safety device must be used to prevent any potential risk.
- * The user must refrain from attempting to repair or adjust the system personally and should only contact with the professional personnel.
- * The erector must supply full information regarding operation manual of the system in the event of any emergency and provide the system user with the "MANUAL" included with the product.
- * Keep the manual in a safe place for future reference.

II Important safety information

- * Carefully read and follow all safety precautions before attempting to install and use this sliding gate operator.
- * Make sure the power supply (AC220V±10% or AC110V±10%) of the gate operator is suitable for the power supply in your area.

III Main technical parameters

Model	750	550	370
Power supply	220V±10% or 110V±10%		
Motor rotational speed	1400rpm		
Output rotational speed	46.6r/min		
Max. gate weight	1500kg	1200kg	800kg
Gate speed	12m/min		
Environmental temp.	-45°C~+55°C		
Limit switch	Spring limit switch Or Magnetic limit switch		
Protecting class	IP44		

* Mechanical Installation

The LW550 will handle gate weighting up to 1200 kg and up to 20m if the proper installation procedures have been followed.

The sliding gate operator operates by forcing a drive rack by a drive gear. The entire configuration is shown in the diagram below. The gate operator must be installed on the inside of the gate.(Fig.1)

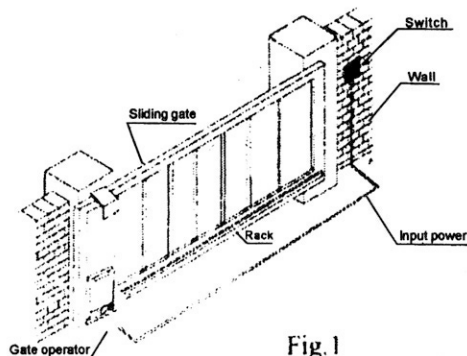


Fig.1

VI Troubleshooting

Numbe	Trouble	Cause	Method
1	Motor can't work.	No power supply. Break fuse capacitor decay. Surpass load. Effected by the thermal protection.	Check power supply. Change fuse capacitor. Check if any barrier on track. Restart after 20 minutes.
2	Can open (close) But can't close(open).	Position of the limit switch isn't correct. Limit switch is damaged. Magnetic steel dropped and position isn't right.	Adjust the position. Change the limit switch. Re-adjust magnetic steel position.
3	Can't locate accurately.	Distance of the limit switch is too large. Limit switch is damaged. Magnetic steel's position is wrong.	Adjust position of limit switch. Change the limit switch. Re-adjust the position.
4	Clutch can't work.	Operating handle is broken. Clutch is jammed.	Change the handle. Rotate the output gear double direction.
5	Press the button on remote, the motor can't work.	No signal.	Change the battery.
6	Motor can ture but can't wor.	Compression spring of clutch is dead. Clutch is released.	Change the spring. Close the clutch.

VII How to set the control board please see the manuals of control board

SLIDING GATE OPERATOR

Manual operation (see Fig.6)

- * In case of power failure use key unlock the lock and pull down the release bar about 90 degree to open or close gate manually, use the release key as follow:
- * Fit the supplied key in the lock.
- * Turn the key and pull down the release bar about 90°to release the gear.

Note: Do not exceed 90°, be careful not to use too much force, otherwise the release bar will be damaged.

- * Open and close the gate manually.

Note: If the gate bumps the mounting post and cannot be electric opened, move the gate a few inches by hand, thus you can release the gate with the key, open and close the gate manually.

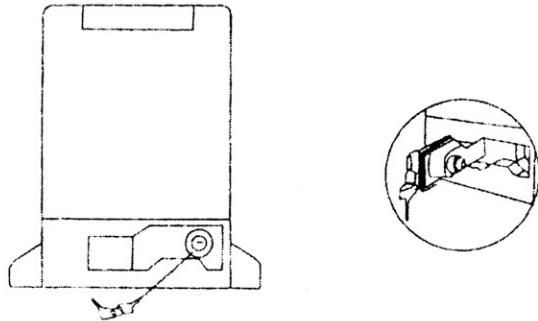


Fig.6

SLIDING GATE OPERATOR

* Gate preparation

Be sure the gate is properly installed and slides smoothly before installing the sliding gate operator. The gate must be plumb, level, and move freely.

* Conduit

In order to protect the wires, use PVC conduit for low voltage power cable and control wires. Conduit must be preset into the concrete when it is poured. Wires within the conduit shall be located or protected so that no damage can result from contact with any rough or sharp part.

* Concrete pad

The base unit of the gate operator requires a concrete pad in order to maintain proper stability. The concrete pad should be approximately 450mm x 300mm x 200mm deep in order to provide for adequate weight and structure to insure proper stable installation.

* Anchors (see Fig.2)

You can use anchor bolts, anchors, washers and nuts. These anchors must be set into the concrete when it is poured or you can use wedge anchors to fasten the operator.

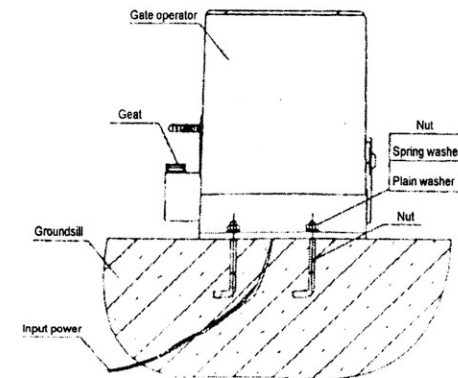


Fig 2

LIDING GATE OPERATOR

* Operator base (see Fig.3)

After the concrete has hardened, mount the gate operator base to the concrete pad. Verify that the base is properly leveled.

Using bolts and washers mount the gate operator to the base and insert the cover. Check the operator and make sure it is lined up with the gate.

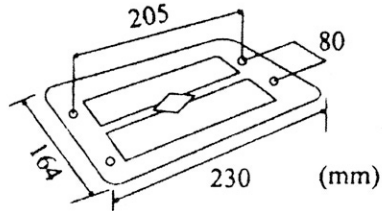


Fig.3

IV Installation of Rack

- * Fix the three nuts (in the same package with rack) on the rack element.(Fig. 4)
Lay the first piece of rack on the gear and weld the first nut on the gate.
- * Move the gate manually, checking if the rack is resting on the gear, and weld the second and third nut.
- * Bring another rack element near to the previous one. Move the gate manually and weld the three nuts as the first rack, thus proceeding until the gate is fully covered.
- * When the rack has been installed, to ensure it meshes correctly with the gear.
- * The space between rack and gear is about 0.5mm.

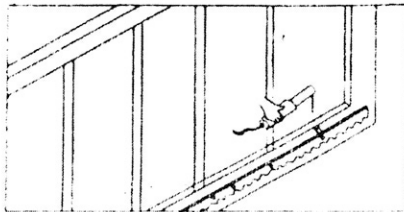


Fig 4

SLIDING GATE OPERATOR

V Adjustment

Spring limit switch/ Magnetic limit switch

- * To ensure safety, it is recommended to install limit switches at both ends of the gate to prevent the gate from sliding out of the rails. The rails must be installed horizontally.
- * Install the limit block as shown in Fig.5. The spring limit switch and blocks are used to control the position of the gate.
- * Release the gear with the key and push the sliding gate manually to pre-determine the position, fix the block to the rack and lock the gear by push up the release bar. (Fig.6) Moving the gate electrically, adjust the block to the proper position until the position of the opening and closing meet the

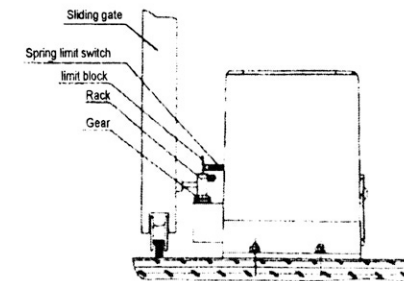


Fig.5