

Door/Window Sensor User Manual



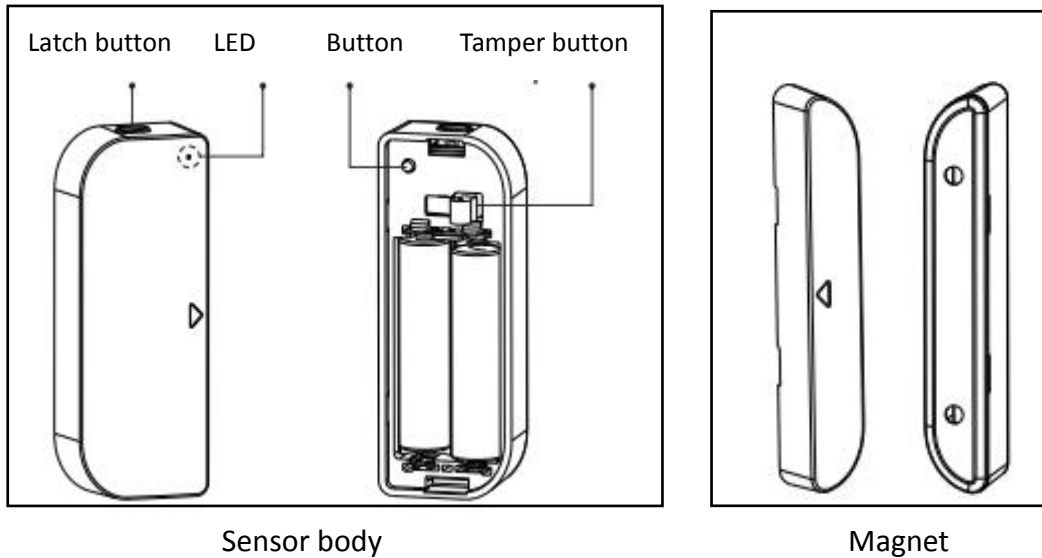
1. PRODUCT OVERVIEW

Door/Window Sensor is a Wi-Fi wireless Door/Window sensor. It can monitor the status of door/window after proper installed through your smart phone. When it is triggered, such as open, close or tampered, a push notification will be reported to your smart phone.

2. PRODUCT FEATURES

- Working in 2.4G wireless Wi-Fi;
- Support EZ or AP mode for Wi-Fi connection;
- Send notification about Tampered event;
- Detect the battery level and report;
- Report the low battery level alarm;
- Open/Close history record and record clear;
- Compliant with CE, FCC and ROHS.

3. PRODUCT STRUCTURE



Button activities and LED indicator:

- 1) In the condition of clicking the button, if LED indicator turns blue, the device is working. If not, the device is out of work, please check the battery supply.
- 2) In the condition of clicking the tamper button or trigger the window sensor (by taking apart the magnet from body), if the LED indicator turns purple, the device is non Wi-Fi connected. If the LED indicator turns blue, the device is Wi-Fi connected;
- 3) To press and hold the button for 5s makes device enter Wi-Fi Connection configuration, and the LED indicator blinks rapidly (EZ Mode) or slowly (AP Mode). Device works in EZ mode default. Pressing and holding the button for 5s will make the device switch between EZ mode and AP mode.

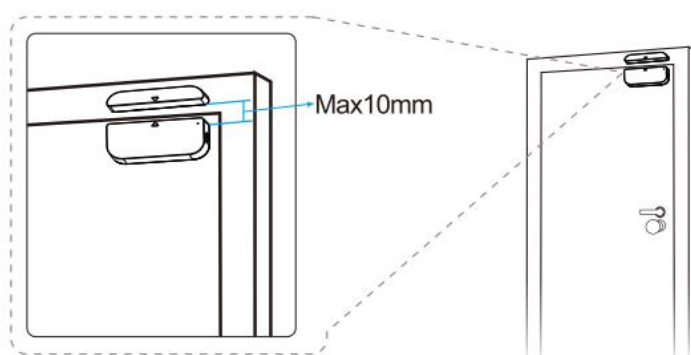
4. SPECIFICATIONS

Power supply	2*AAA battery , 3V
Wireless transmitting and receiving frequency	2.4GHz ~ 2.484GHz
Network protocol supported	IEEE802.11 b/g/n
Transmitting power	802.11b:20dBm ± 2dBm@1Mbps 802.11g:14dBm ± 2dBm@54Mbps 802.11n:14dBm ± 2dBm@MCS7_HT20
Receiving sensitivity	802.11b:-91dBm@11Mbps 8%PER 802.11g:-75dBm@54Mbps 10%PER 802.11n:-72dBm@MCS7_HT20 10%PER

Vector error EVM	802.11b: $\leq 35\%$ 802.11g: -28dBm max. 802.11n: -28dBm max. @MCS7_HT20
Working temperature	-10 ~ +40 °C
Storage temperature	-40 ~ +70 °C
Relative humidity	8% ~ 80%

5. INSTALLATION

- 1) The sensor body and magnet part have to be installed within 10MM when the door/window is closed.



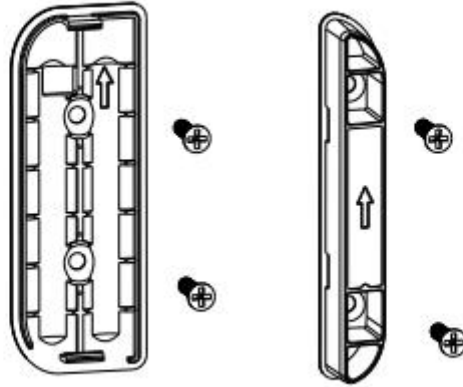
NOTE:



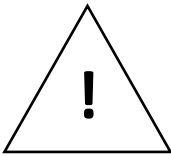
1. This Sensor should not be mounted directly on or near metal framing or other large metallic objects since metal objects may weaken the radio signal strength.
2. This Sensor should only be placed indoor and away from water and other extreme weather conditions.

- 2) Using one of the following methods to Mount the device to the wall, door or window:

2.1) Screw the bidirectional mounting plate and magnet into the wall, door or window frame. (presented below figure)

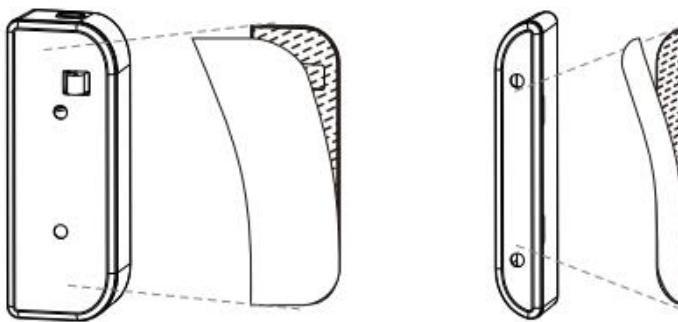


2.2) Attach the double-sided mounting tape to the covers and to adhere to the wall, door or window frame.

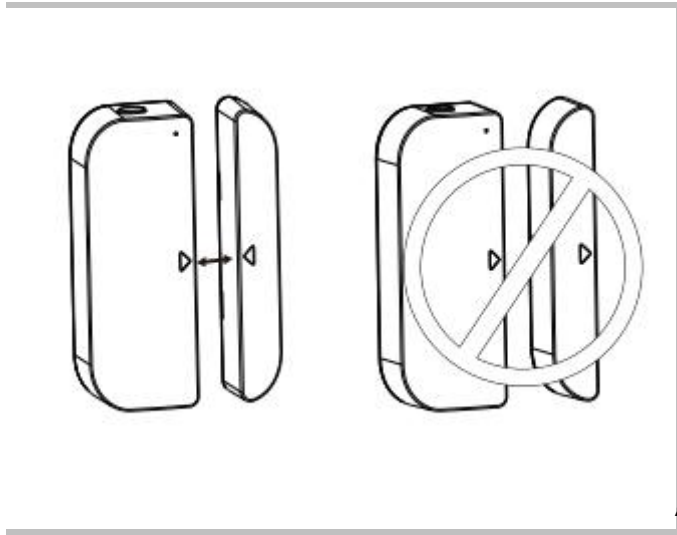


NOTE:

Wipe clean the surface where the Door Window Sensor will be mounted.
Any dust and particles can reduce the adhesion of double-sided mounting tape.



3) Ensure that the orientation marks of the sensor body and the magnet are oriented towards each other.



6. Start APP and Account

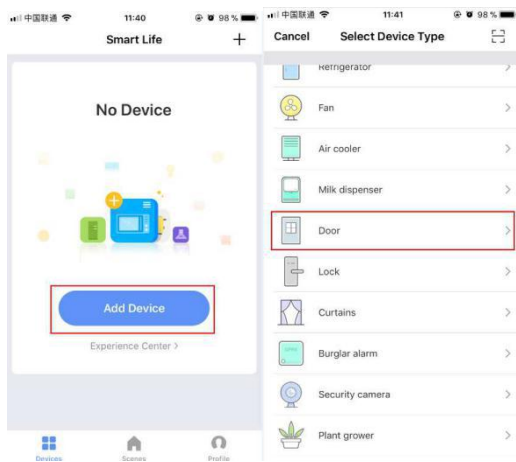
6.1 Scanning the following QR codes to download APP for Android and IOS System. Or you can download the APP from Apple store and Google Play with “Smart Life”.



6.2 Start the APP and register an account with your email address then login APP with your account;

7. Add Device

7.1 Click “ADD DEVICES”, Select the Device Type “Door”



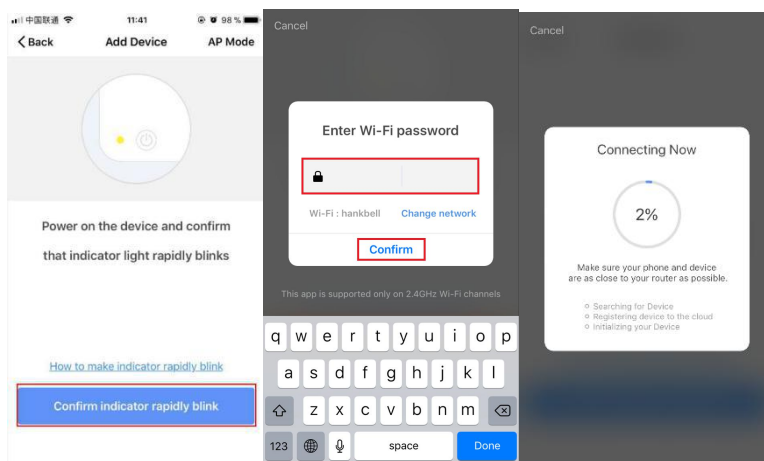
7.2 Make sure the device is in waiting Wi-Fi configuration mode with LED blinking in red fast or slow. The device will enter the waiting configuration after it is first time powered on or pressing and holding the button till the LED is blinking in red fast or slow.

7.3 Follow the APP guideline to enter the Wi-Fi SSID and password, then waiting for the Wi-Fi configuration finished.

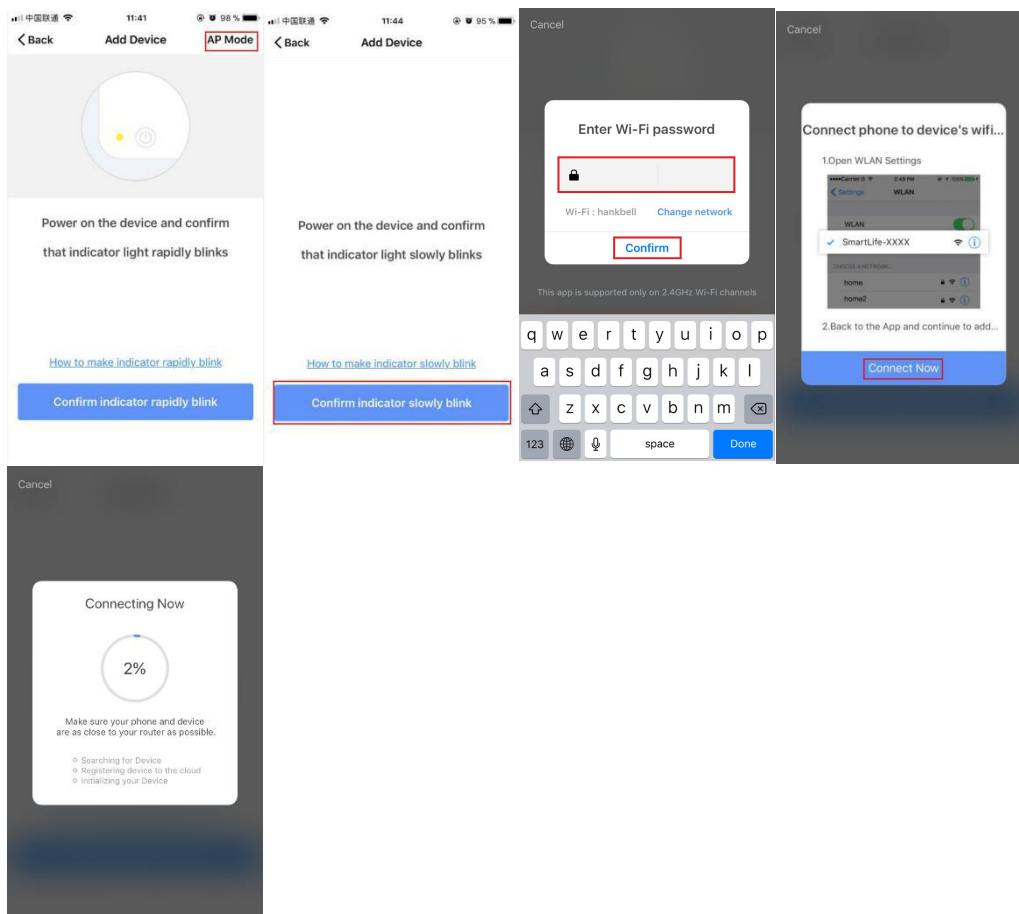
7.4 After the Wi-Fi connection is finished, the device can be re-named and can be shared with family immediately.

Make sure the device is working in EZ mode, if the APP works in EZ mode. Make sure the device is working in AP mode, if the APP works in AP mode. To press and hold the button for 5S switches between EZ mode and AP mode. EZ mode is a default one.

- EZ mode: make sure your APP is connected to a Wi-Fi Router. Then enter the Wi-Fi Router password to finish the Wi-Fi connection.



- AP mode: Click AP Mode, select the Wi-Fi that your APP is working on, enter its password, then select the Device AP name in Wi-Fi list with SmartLife-xxxx to finish the Wi-Fi connection.



8. FCC NOTICE (for USA)

This device complies with part 15 of the FCC Rules. Operation is subject to the following two conditions:

- (1) This device may not cause harmful interference
- (2) This device must accept any interference received, including interference that may cause undesired operation.

The manufacturer is not responsible for any radio or tv interference caused by unauthorized modifications or change to this equipment. Such modifications or change could void the user's authority to operate the equipment.

This equipment has been tested and found to comply with the limits for a Class B digital device, pursuant to part 15 of the FCC Rules. These limits are designed to provide reasonable protection against harmful interference in a residential installation. This equipment generates, uses and can radiate radio frequency energy and, if not installed and used in accordance with the instructions, may cause harmful interference to radio communications. However, there is no guarantee that interference will not occur in a particular installation. If this equipment does cause harmful interference to radio or

television reception, which can be determined by turning the equipment off and on, the user is encouraged to try to correct the interference by one or more of the following measures:

- Reorient or relocate the receiving antenna.
- Increase the separation between the equipment and receiver.
- Connect the equipment into an outlet on a circuit different from that to which the receiver is connected.
- Consult the dealer or an experienced radio/TV technician for help.

RF Warning statement:

To maintain compliance with FCC's RF exposure guidelines, this equipment should be installed and operated with a minimum distance of 20cm between the radiator and your body

9. QUICK GUIDE OF USING AMAZON ECHO TO CONTROL SMART DEVICES

9.1. What you need to get started

Before using Echo to control your smart devices, make sure you meet the following conditions.

- Stable Wi-Fi network which could access to Amazon server.
- An Echo device, such as Echo, Echo Tap, or Echo Dot.
- An Amazon Alexa account.
- Smart Life app and a related account.
- Make sure there's at least one device under your Smart Life account, and the device's name could be easily recognized by Echo.

9.2 Add devices in Smart Life app(Refer to App Instruction)

You can skip this part if you've already add some devices to your Smart Life account, and in the meantime the devices' name are easily recognized.

Download Smart Life app(Refer to App Instruction)

Search " Smart Life " in either App Store or Google Play to install the app.

iOS version download: **App Store**

Android version download:**Google Play**

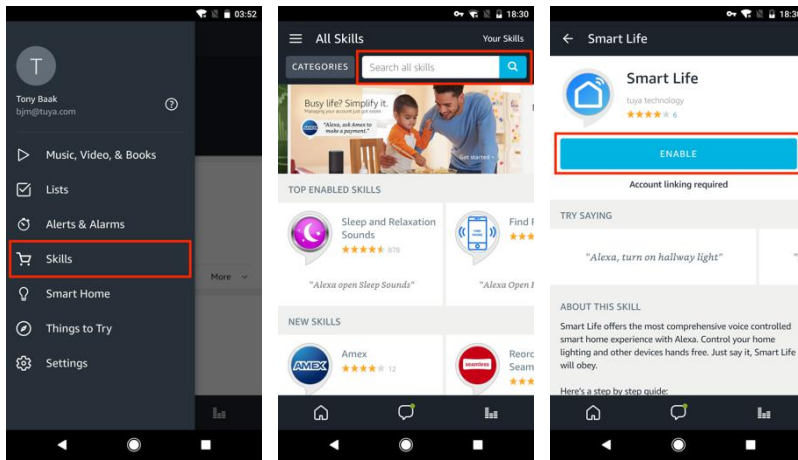
- **Register a Smart Life account and sign in the app (Refer to App Instruction)**
Open the Smart Life app, tap "Register" to register an account, then sign in the app.

- **Add device and change device's name (Refer to App Instruction)**

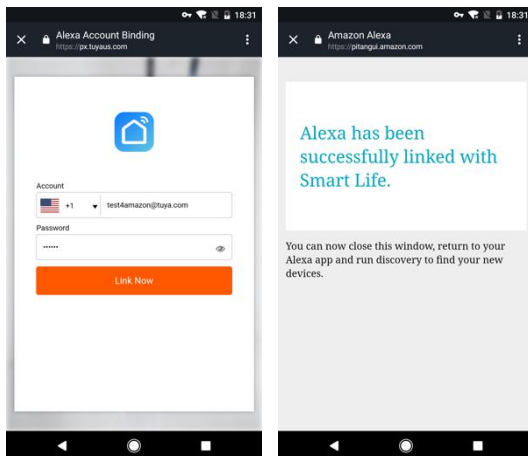
Sign in with the Smart Life account, add the device, then change device name to a easily recognized word or phrase, like "front door".

- **Link Smart Life account to Echo**

1. Tap "Skills" in the hamburger menu, then search "Smart Life". Select "Smart Life" and tap "ENABLE" to enable the Skill.



2. You will be redirected to the account link page. Type in your Smart Life account and password, don't forget to select the country/region where your account belongs to. Then tap "Link Now" to link your Smart Life account. The country/region, the account, and the password must match with the exact content in Step 2.2 when you registered the account. When "Alexa has been successfully linked with Smart Life " shows up, tap on the top left corner.

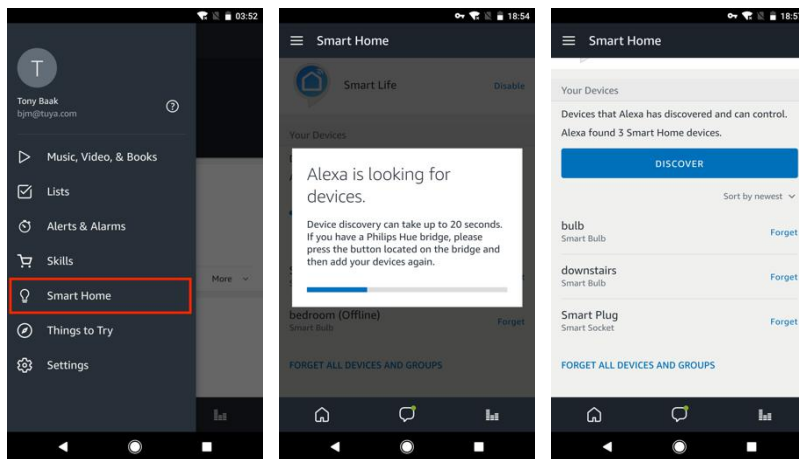


9.3 Control your smart devices through Echo

- **Discover devices**

Echo needs to discover your smart devices before it controls them. You can say "Alexa, discover devices" to Echo. Echo will discover devices which have already been added in the Smart Life app.

You can also tap "DISCOVER" to discover the smart devices. Discovered devices will be shown in the list.



Note:

- ❖ When you change the device's name on Smart Life app, Echo must re-discover before you control them.
- ❖ If the Echo can not find the Devices added in Smart Life APP, please disable the Smart Life skill, enable Smart Life skill, link the APP account to Alexa account, and discover the devices again to make Echo voice control work.

- **Control devices by voice commands**

Now you can control your smart devices through Echo. As an example, the supported voice command is as below to get the state of the “front door”:

- ❖ *Alexa, is the front door locked?*

10. QUICK GUIDE OF USING GOOGLE HOME TO CONTROL SMART DEVICES

10.1. Control your smart devices through Google Home

Before using Google Home to control your devices, make sure you meet the following conditions.

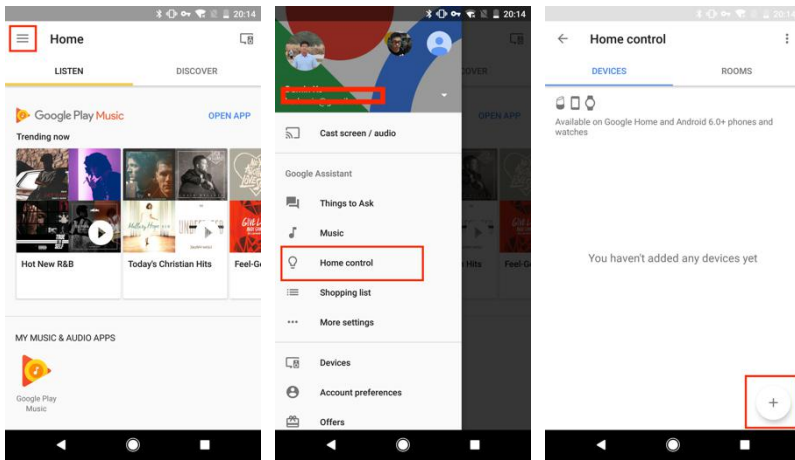
- A Google Home device, or Android phone with Google Assistant.
- Latest Google Home app.
- Latest Google app (Android only)
- A Google account.
- The device display language must be set to English US.
- Smart Life app and a related account.
- Smart devices.

10.2. Add devices in Smart Life app(Refer to App Instruction)

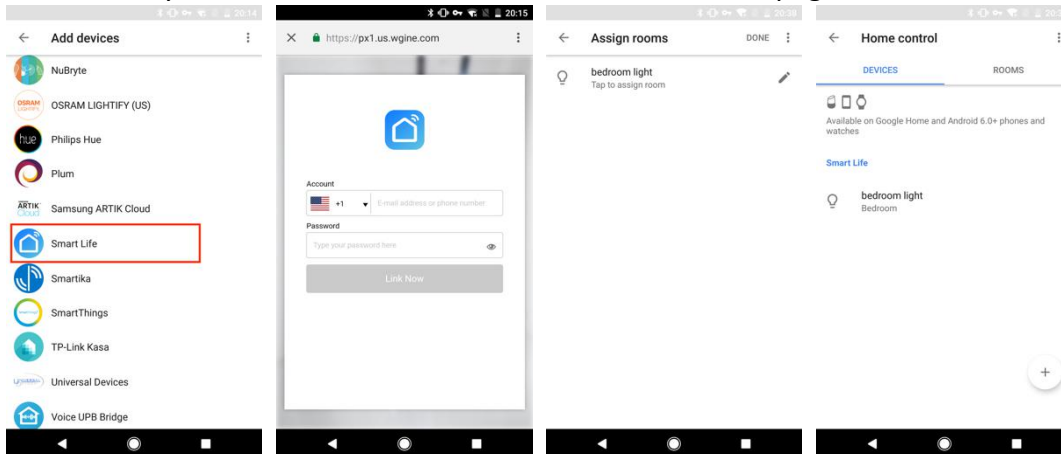
You can skip this part if you've already add some devices to your Smart Life account, and in the meantime the devices' name are easily recognized. And refer to **section 9** for adding devices in Smart Life APP.

- **Link Smart Life account in Home Control**

1) Tap "Home Control" in the hamburger menu on the Google Home app's home page, then tap "+".



2) Find "Smart Life" in the list. In the new window, select your Smart Life account's region, type your Smart Life account and password, then tap "Link Now". After you assign rooms for devices, your devices will be listed in the Home Control page.



10.3. Control your smart devices through Google Home

Now you can control your smart devices through Google Home. As an example, the supported voice command is as below to get the state of the "front door":

- *Ok Google, is the front door on?*
- *Ok Google, is the front door off?*
- *Ok Google, is the front door on or off?*

11. IFTTT - Setup and Usage

Get Started: How to connect Smart product to IFTTT?

Step1.

Visit the IFTTT official website on your PC and sign in with your IFTTT account.

Note: You can also use IFTTT app and follow similar steps to connect your device to the IFTTT In this FAQ we take the website setting method for example.(Download IFTTT APP from Google play or App store)

Step2.

“Search” for “Smart Life” , and then click “Smart Life” service

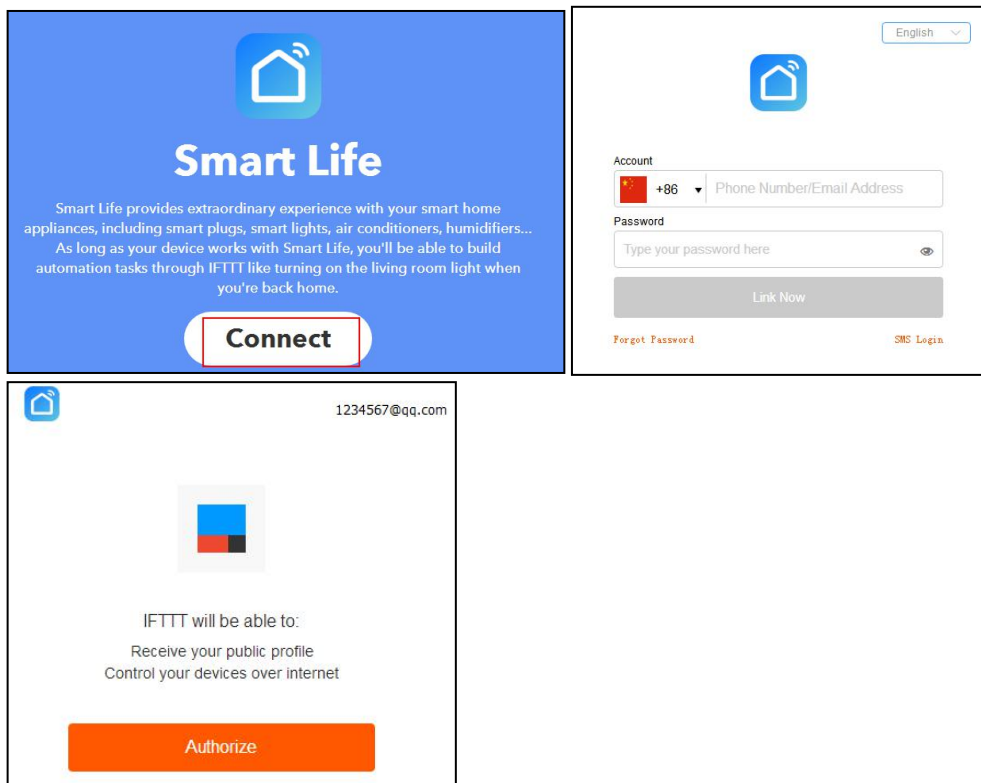


Services



Step3.

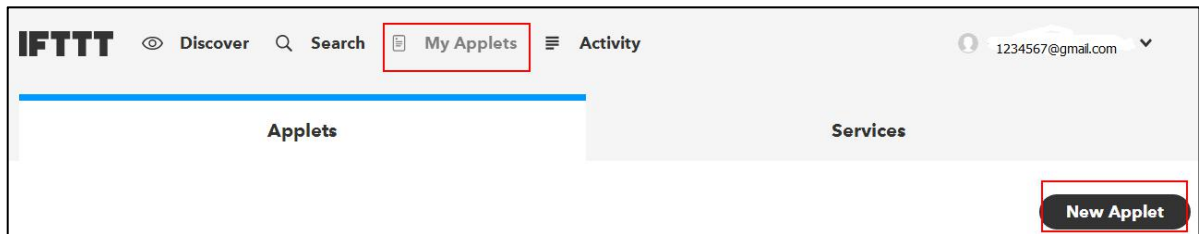
Click "Connect" to enter your account and password to log in. Click “authorize” and the associated account is successful



There are 2 methods to use IFTTT with smart products

Method 1: on Smart life service page, choose an existing Applet you need, turn on it and then finish the configuration.

Method 2: Create a new Applet on your own
Click “My Applets” to create an Applet

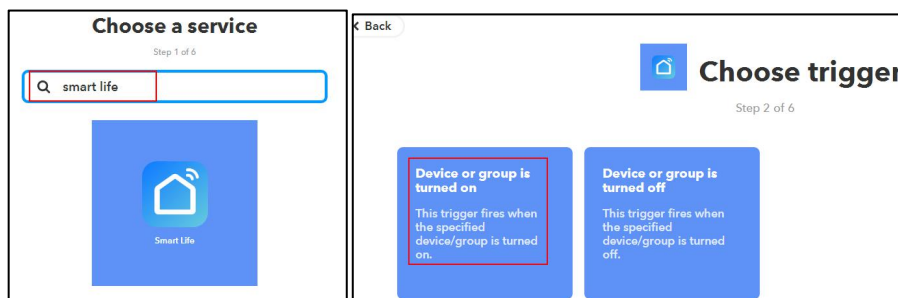


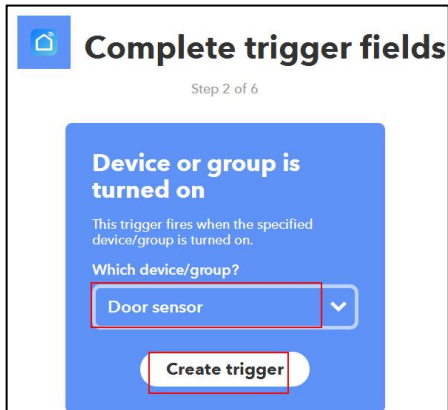
Step 1. Create a Trigger

tap “this” to choose a trigger, You can search for “smart life” to choose a Smart life Trigger.



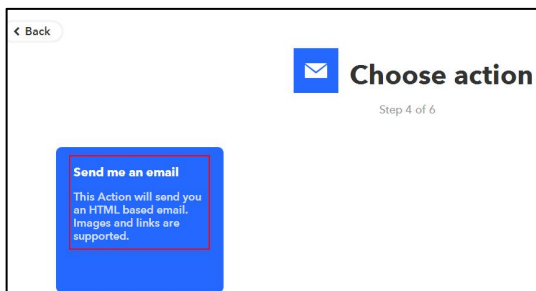
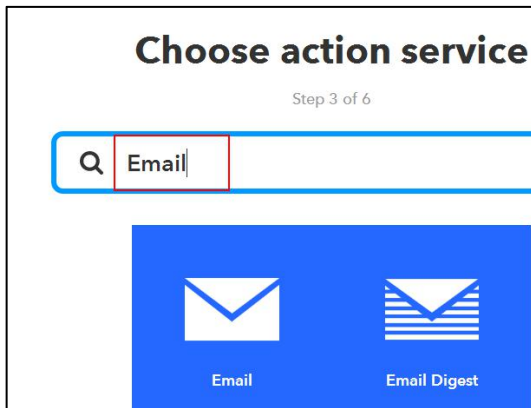
For example, use a door sensor as a trigger





Step 2. Create a Action

Tap “that” to choose an Action. You can search for “Email” to choose a action



Complete action fields

Step 5 of 6

Send me an email

This Action will send you an HTML based email. Images and links are supported.

Subject

DeviceName was turned on TriggeredAt .

Add ingredient

Body


DeviceName was turned on TriggeredAt .

Add ingredient

Create action

Review and finish


Step 6 of 6



If Door sensor is turned on, then Send me an email at [redacted]@gmail.com

78/140

by [redacted]

works with 

Receive notifications when this Applet runs

Finish

Step 3.

New Applet “IF Door sensor is turned on, then Send me an email at xxxxxx@gmail.com” is created as a result.