

USER'S MANUAL

SMART LOCKS



DX100 Push/Pull
Fingerprint Smart Lock



DX100

Push/Pull Fingerprint Smart Lock



FEATURES

- Advanced Fingerprint Identification
- Virtual Key Access
- Access Expiry
- Access Monitoring
- Backup Key
- Security Lockout Mode
- Emergency Power
- Data Privacy
- Anti-peep Touchscreen
- Voice Prompt Assistance
- WiFi Lock
- Rechargeable battery

DETAILS

Technology: Synchronization
Fingerprint access: 300
RFID access: 200
PIN Code access: 1000
Mobile App access: 1000
Door Thickness: 45 - 100 mm
Dimension: 530 x 250 x 180 mm
Batteries: 4pcs AA
Weight: 6 kg

MODE OF ACCESS

Mobile App

Fingerprint

PIN Code

RFID Card

Mechanical Key



works with the Google Assistant

WORKS WITH amazon alexa



SCAN ME

Function Setting Description

I. Precautions

1. All locks are blank when leaving the factory. Any fingerprint or door card can open the door.
2. The administrator's default password is "123456". When using it, please change the default administrator password first. The administrator password is the highest level password, please keep it safely!
3. The mechanical key is recommended for safekeeping in an outdoor safe place.

II. System Initialization

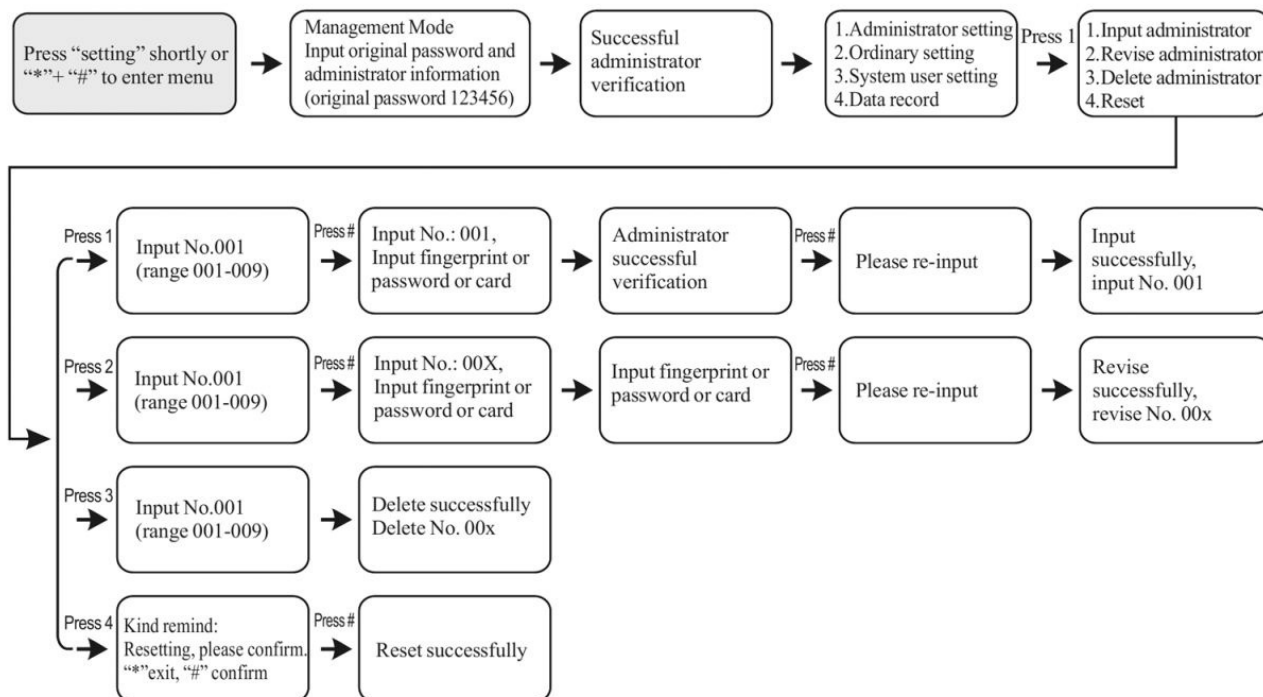
Press and hold the “settings” button on the battery pack on the rear panel for about 6 seconds. The indicator will flash. The screen displays: initialization is successful. At this point, any fingerprint can be unlocked. After the initialization, the default password is “123456” (enter the administrator After the information, the system default password "123456" is automatically deleted).

Note: Return key, "#" for confirmation, "5" for up, "8" for down.

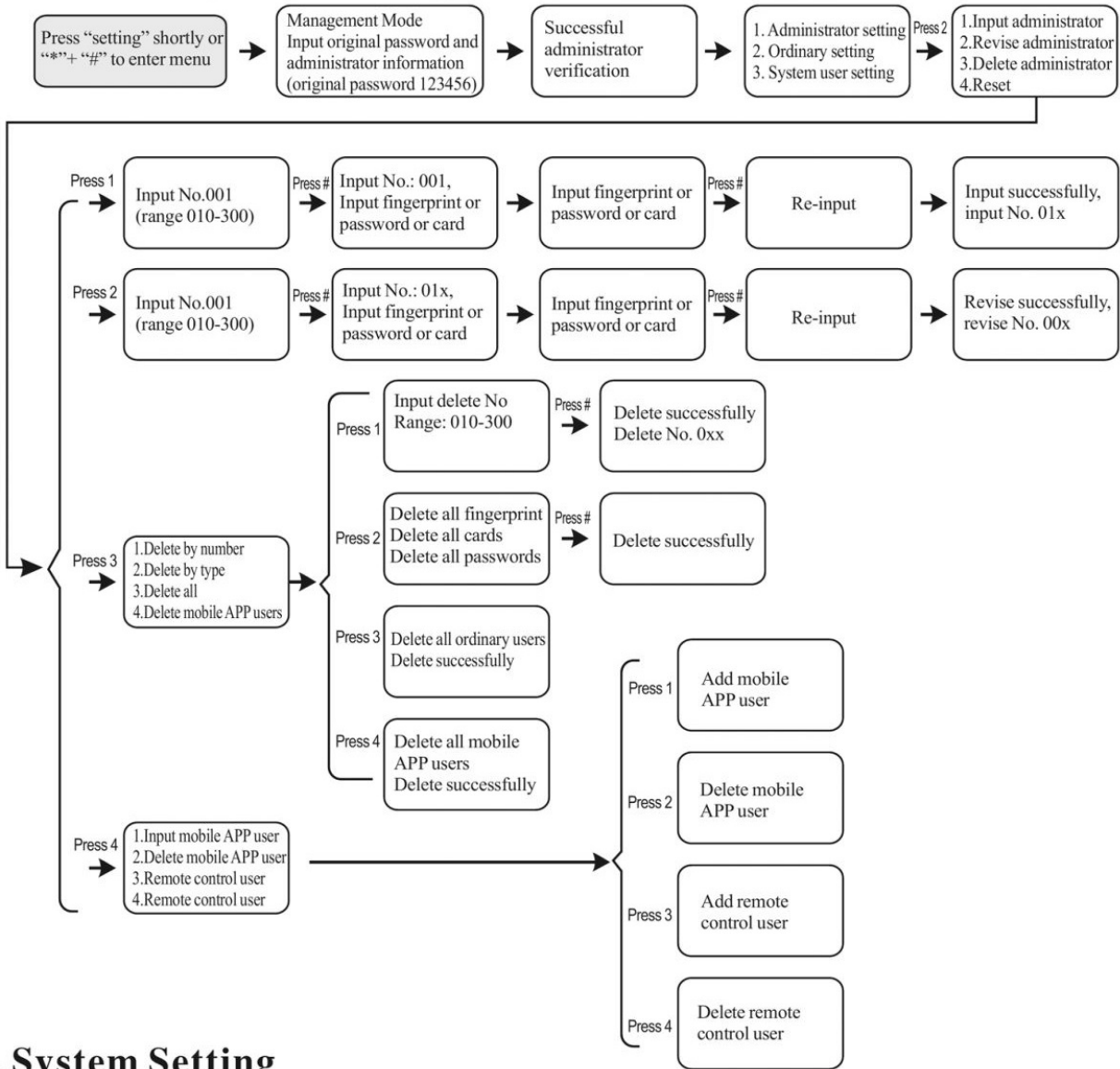
Brief Introduction

Key to door	Qty	Number range	Description
Administrator	9	001-009	Administrators can be fingerprints, passwords or door cards
Ordinary user	291	010-300	Ordinary users can be fingerprint, password, door card, remote control
Mechanical key	2		

III. Administrator Setting



III. Ordinary User Setting



V. System Setting

