

DIGITALHOME
Helping you live smartly.

ROLLER BLINDS COLLECTION



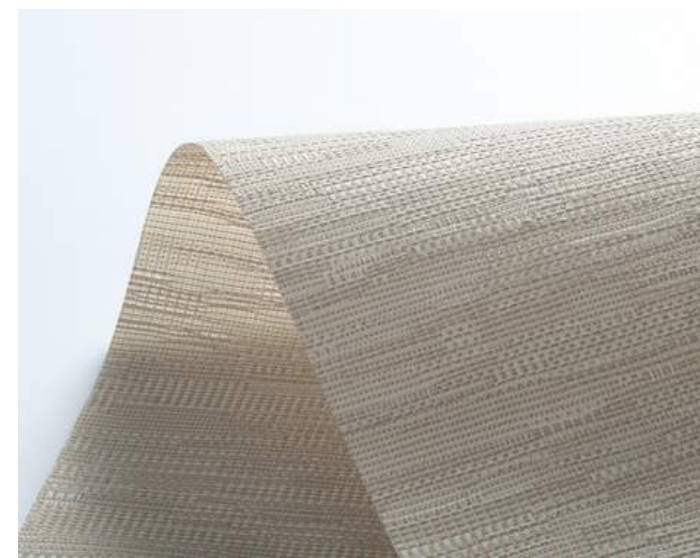
All color for referance only, please refer to the sample fabric book for actual color and texture



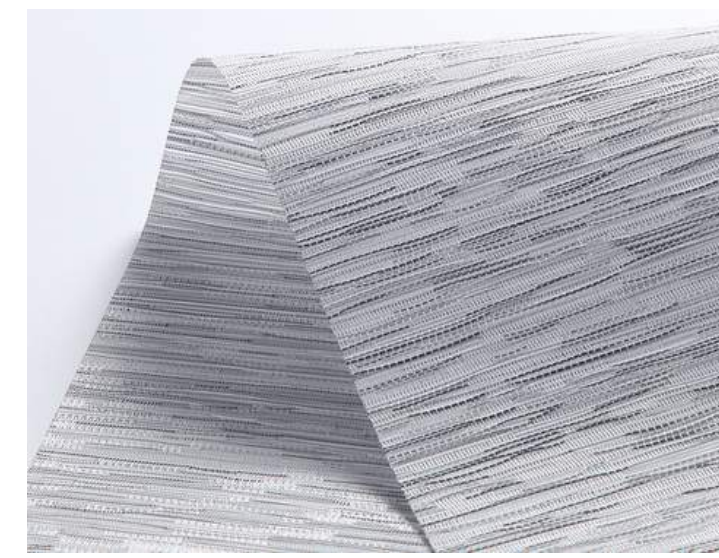
☀ 82082A



☀ 82082B



☀ 82082C 180g/m2±3%

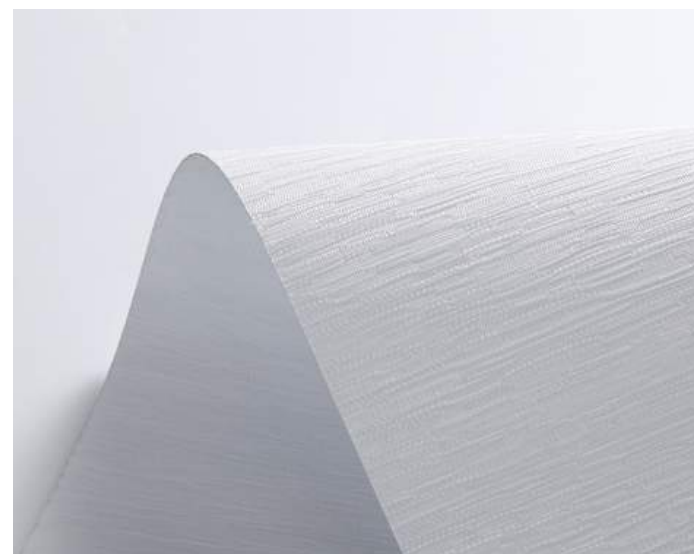


☀ 82082D



☀ 82082E

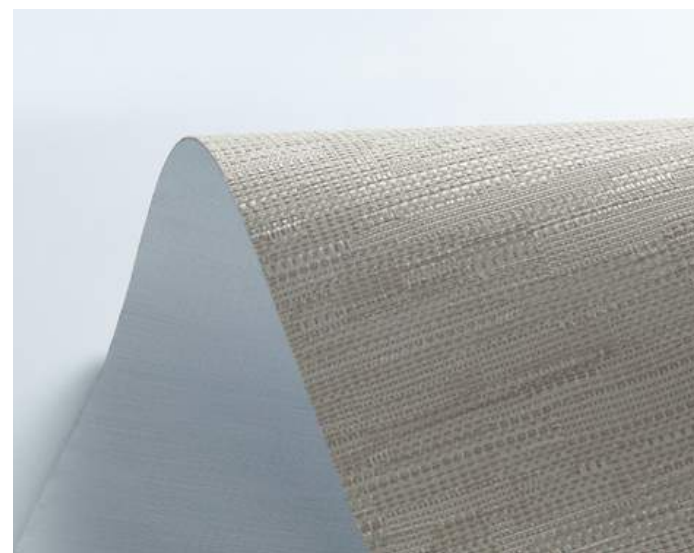
Number	Composition	Max Width	Thickness	Weight	Black Out Rate
82082A	100% Polyester	300cm	0.45mm±0.05%	240g/m2±5%	semi blackout



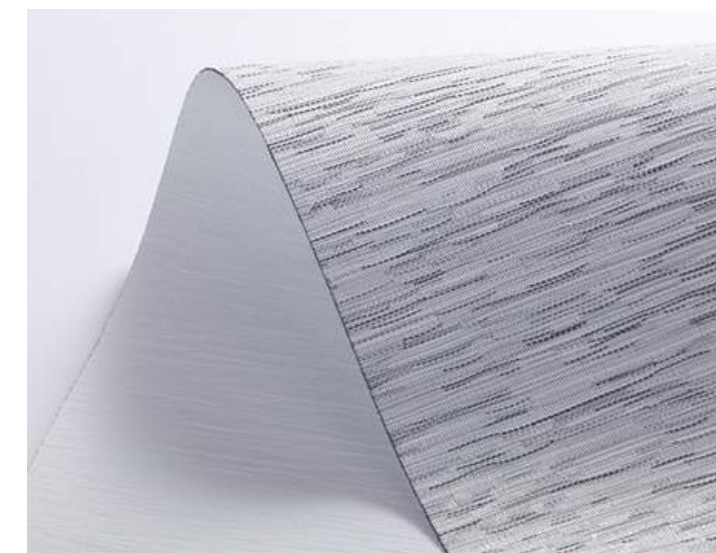
☀️ 82083A



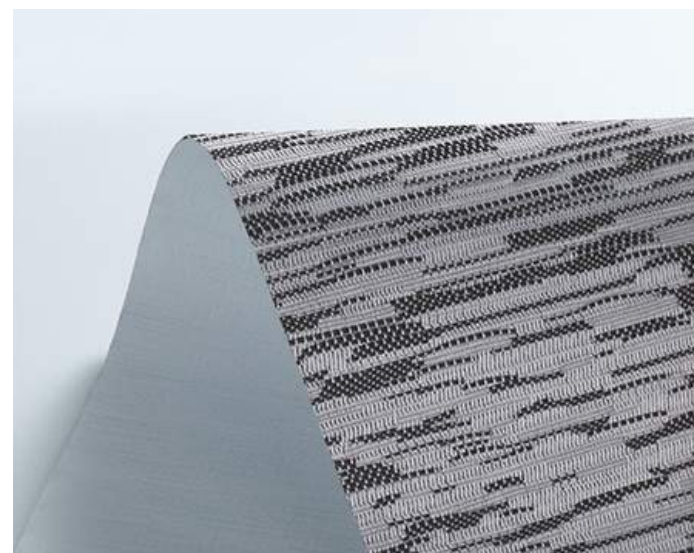
☀️ 82083B



366g/m2±15% ☀️ 82083C



☀️ 82083D



☀️ 82083E

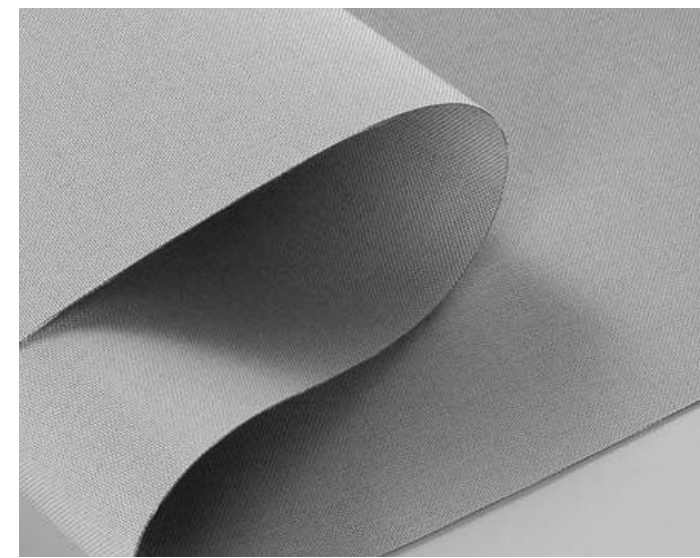
Number	Composition	Max Width	Thickness	Weight	Black Out Rate
82083	100% Polyester	300cm	0.45mm±0.05%	425gm2±15%	blackout



☀️ 82133A



☀️ 82133B



☀️ 82133C



☀️ 82133D

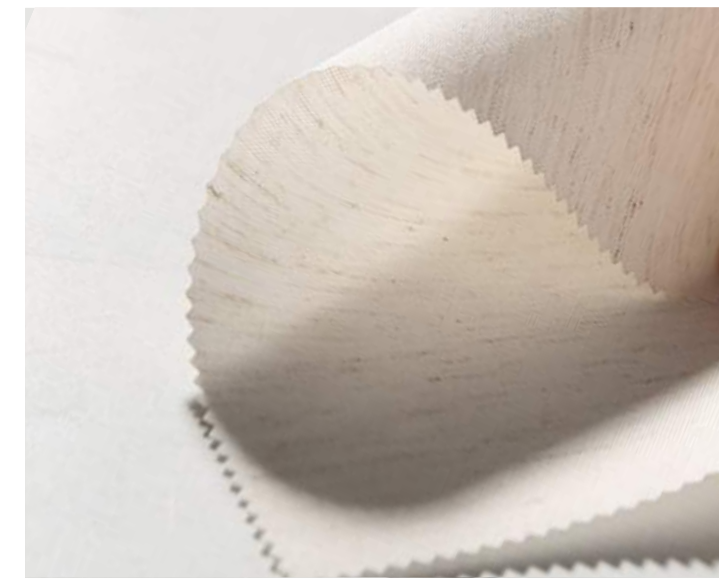


☀️ 82133E

Number	Composition	Max Width	Thickness	Weight	Black Out Rate
82133	100% Polyester	250/300cm	0.6mm±5%	320g/m2±5%	blackout



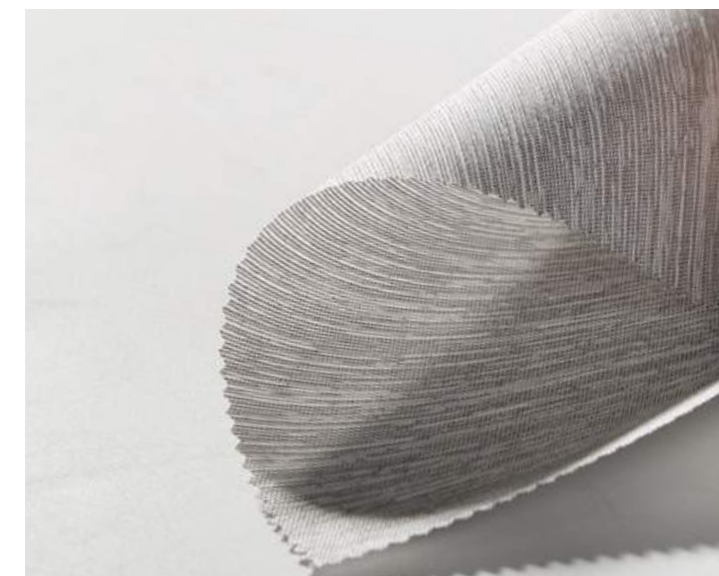
☀ 82067M



☀ 82067N



☀ 82067G



☀ 82067H

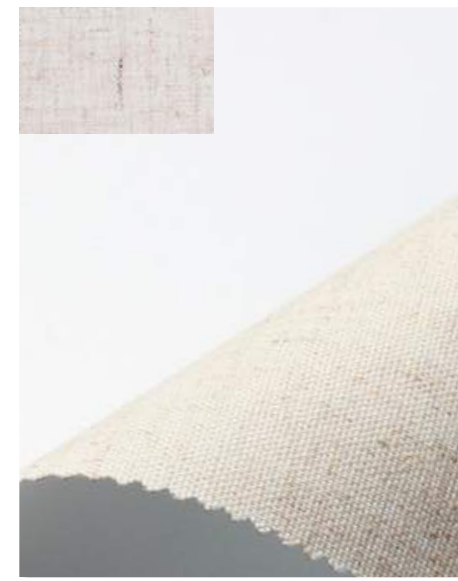


☀ 82067I

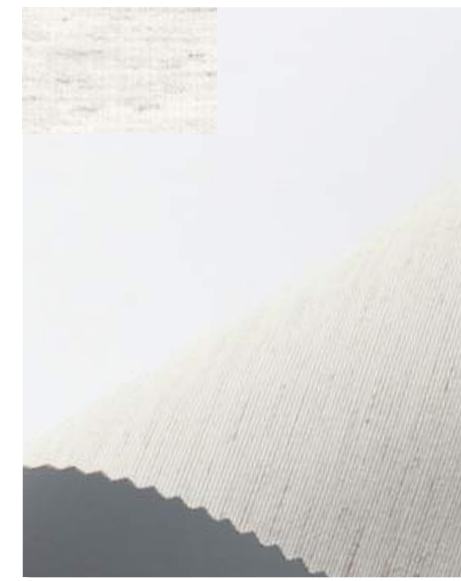


☀ 82067J

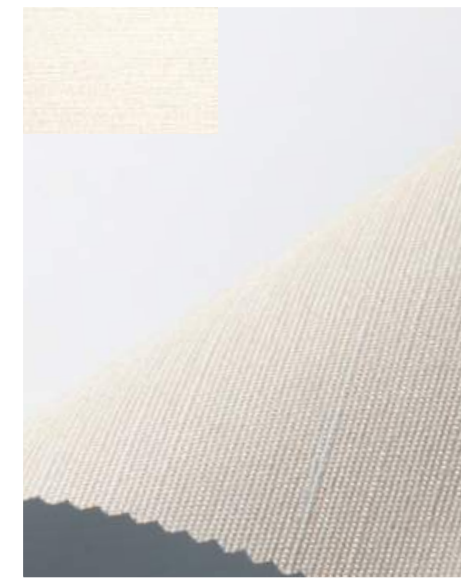
Number	Composition	Max Width	Thickness	Weight	Black Out Rate
82067M				195g/m2±5%	
82067N	T/L80/20	230cm	0.45mm±0.05%	175g/m2±5%	semi blackout
82082G/H	100%Polyester			160g/m2±3%	
82067I/J				205g/m2±5%	



☀️ 82067K



☀️ 82067L



☀️ 82067A



☀️ 82067B



☀️ 82067C



☀️ 82067D

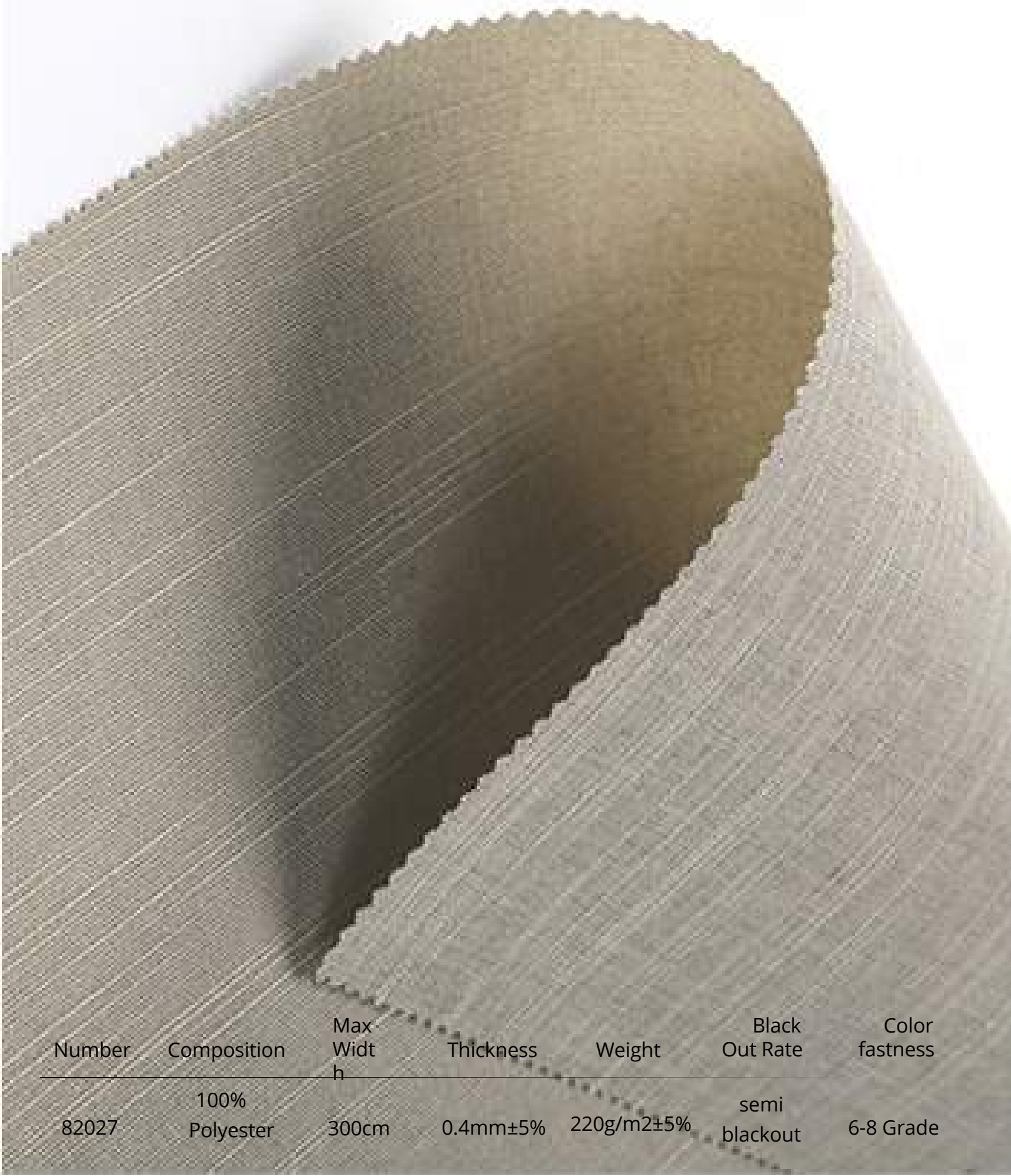


☀️ 82067O



☀️ 82067P

Number	Composition	Max Width	Black Out Rate	Weight
82067K	T/L80/20	230cm	blackout	330g/m2±5%
82067L				360g/m2±5%
82067A/B	100% Polyester			320g/m2±5%
82067O/P				280g/m2±5%
82067C/D				350g/m2±5%



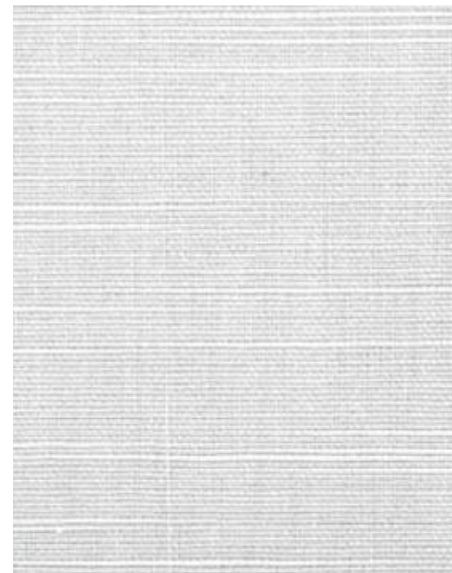
☀️ 82027F



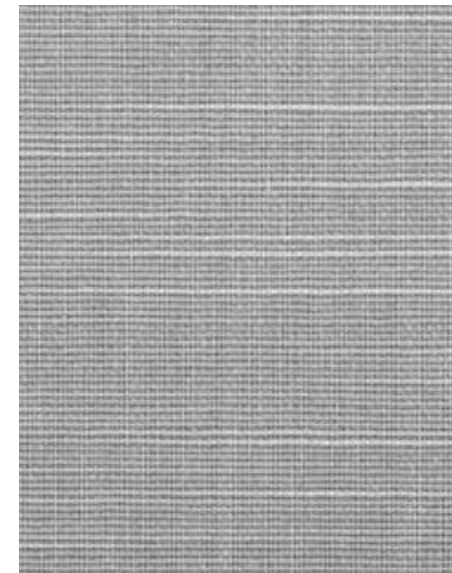
☀️ 82027G



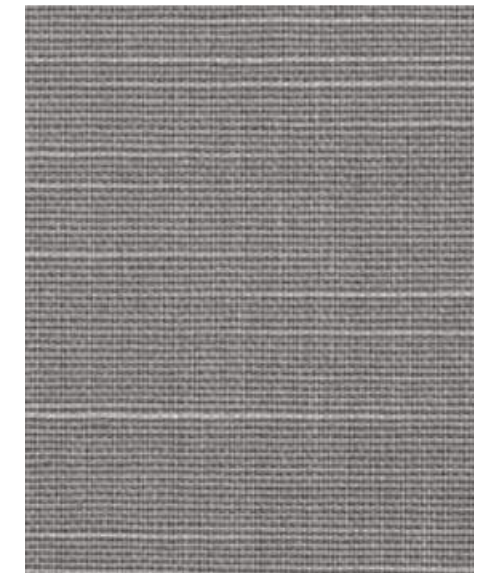
☀️ 82027A



☀️ 82027B



☀️ 82027C

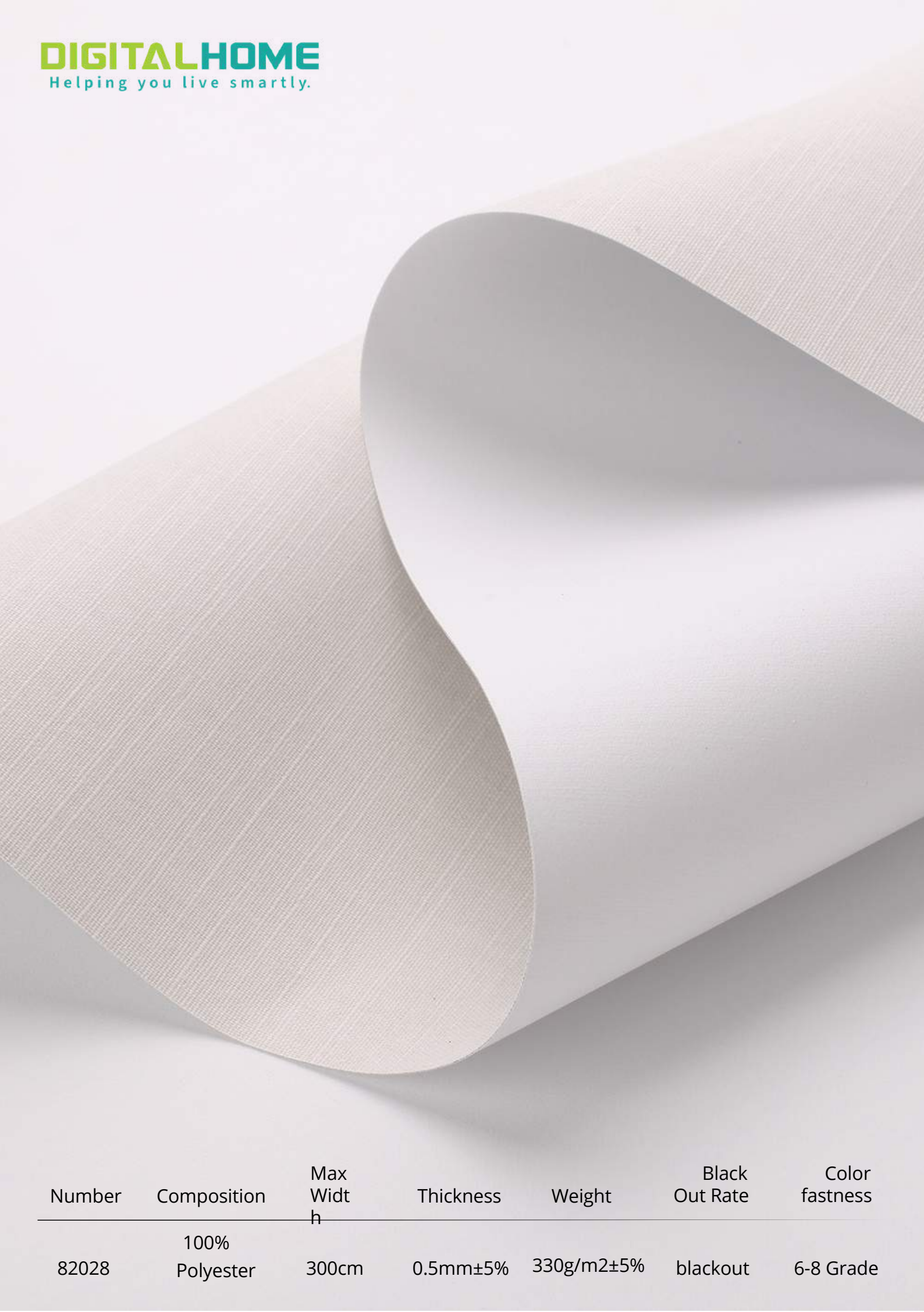


☀️ 82027E



☀️ 82027H

Number	Composition	Max Width	Thickness	Weight	Black Out Rate	Color fastness
82027	100% Polyester	300cm	0.4mm±5%	220g/m2±5%	semi blackout	6-8 Grade



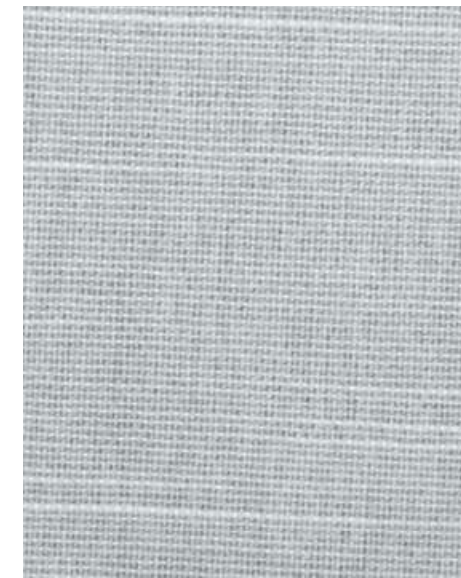
☀️ 82028F



☀️ 82028G



☀️ 82028H



☀️ 82028A



☀️ 82028B



☀️ 82028C

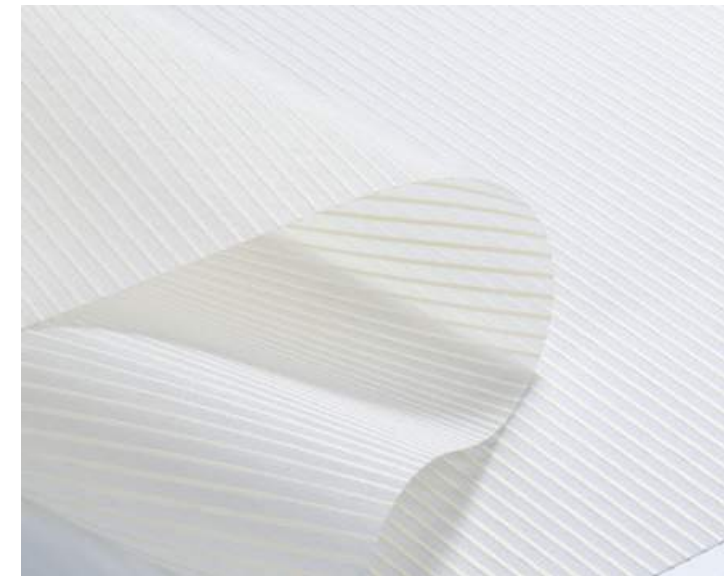


☀️ 82028E

Number	Composition	Max Width	Thickness	Weight	Black Out Rate	Color fastness
82028	100% Polyester	300cm	0.5mm±5%	330g/m2±5%	blackout	6-8 Grade



☀️ 82072C



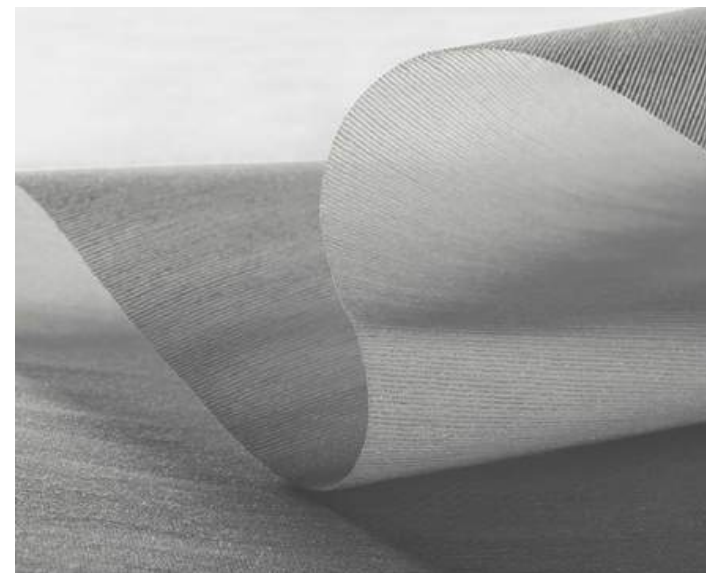
☀️ 82072D



☀️ 82072E



☀️ 82067E

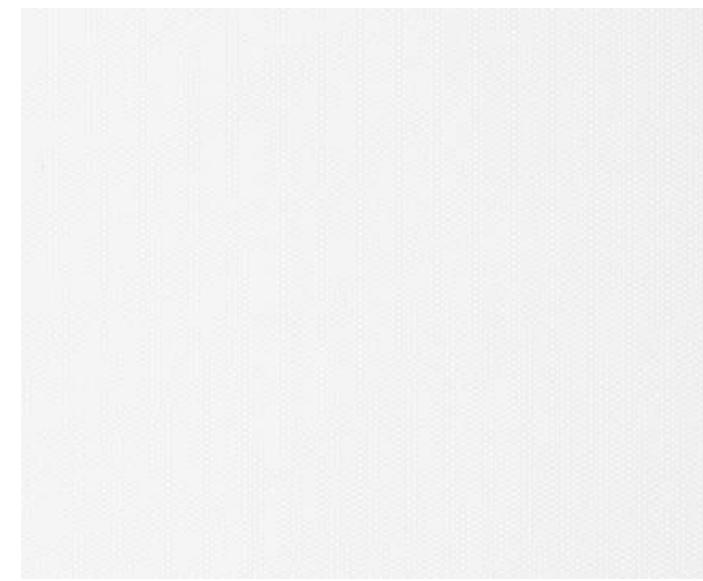


☀️ 82067F

Number	Max Width	Composition	Thickness	Weight	Black Out Rate
82072C/D				120g/m2±5%	
82067E/F	300cm	100% Polyester	0.5mm±5%	300g/m2±5%	semi blackout
82072E	m	T/L70/30		230g/m2±5%	
	230cm				

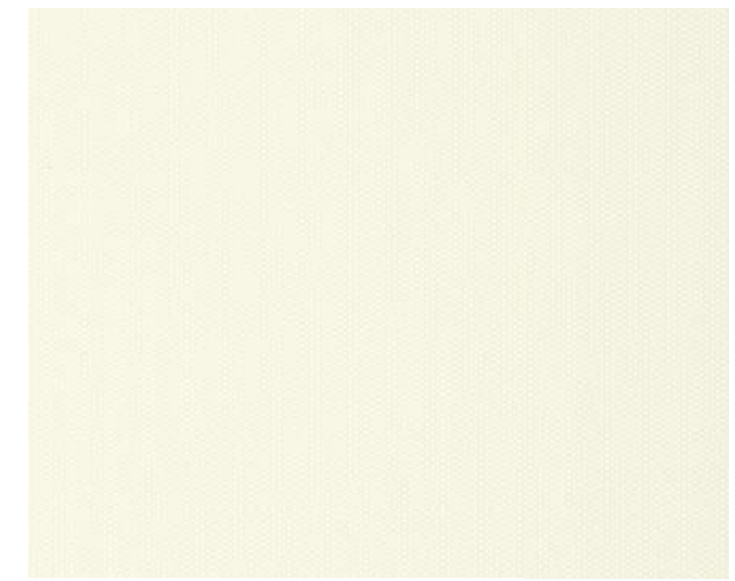
Semi-Blackout

Numbe	Composition	Max Width	Weight	Black Out Rate
r 82086	100%Polyester	230cm	190g/m2±5%	semi blackout



 82086W

 82086F

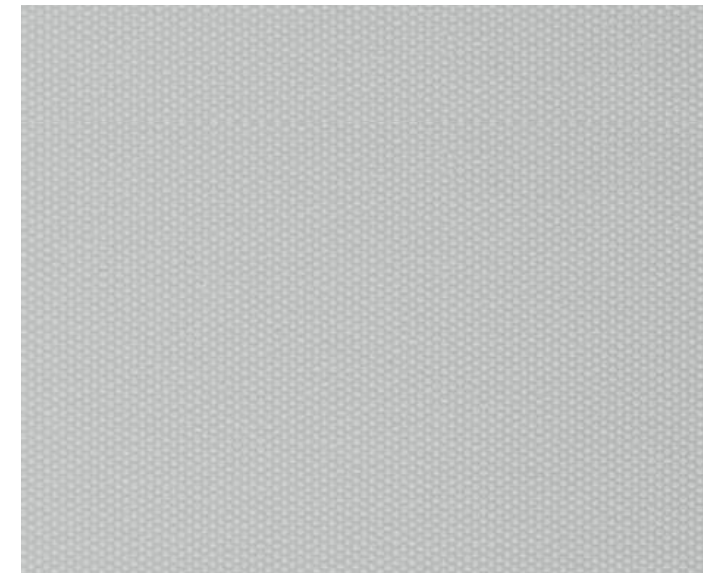


 82086B

 82086G

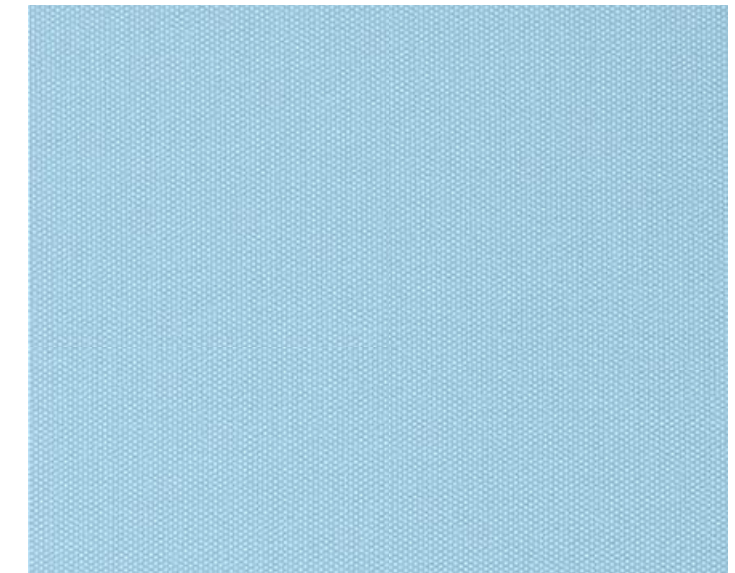
Blackout

Numbe	Composition	Max Width	Weight	Black Out Rate
r 82086	100%Polyester	230cm	330g/m2±15%	blackout



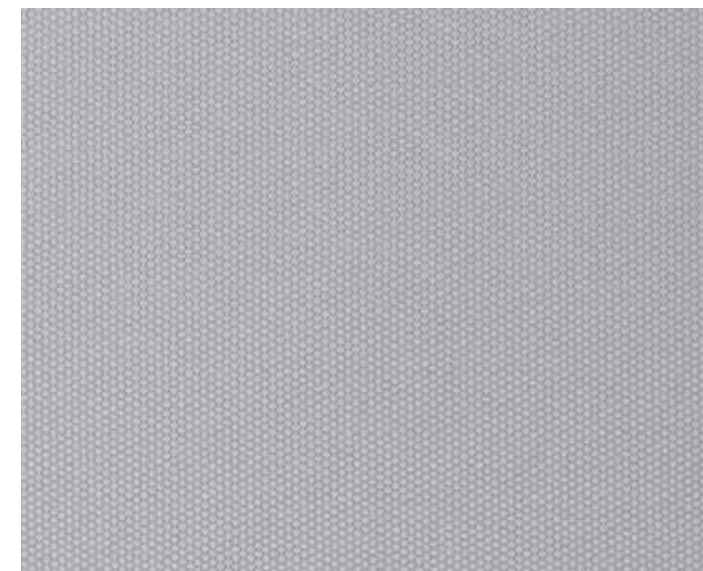
 82086C

 82086H



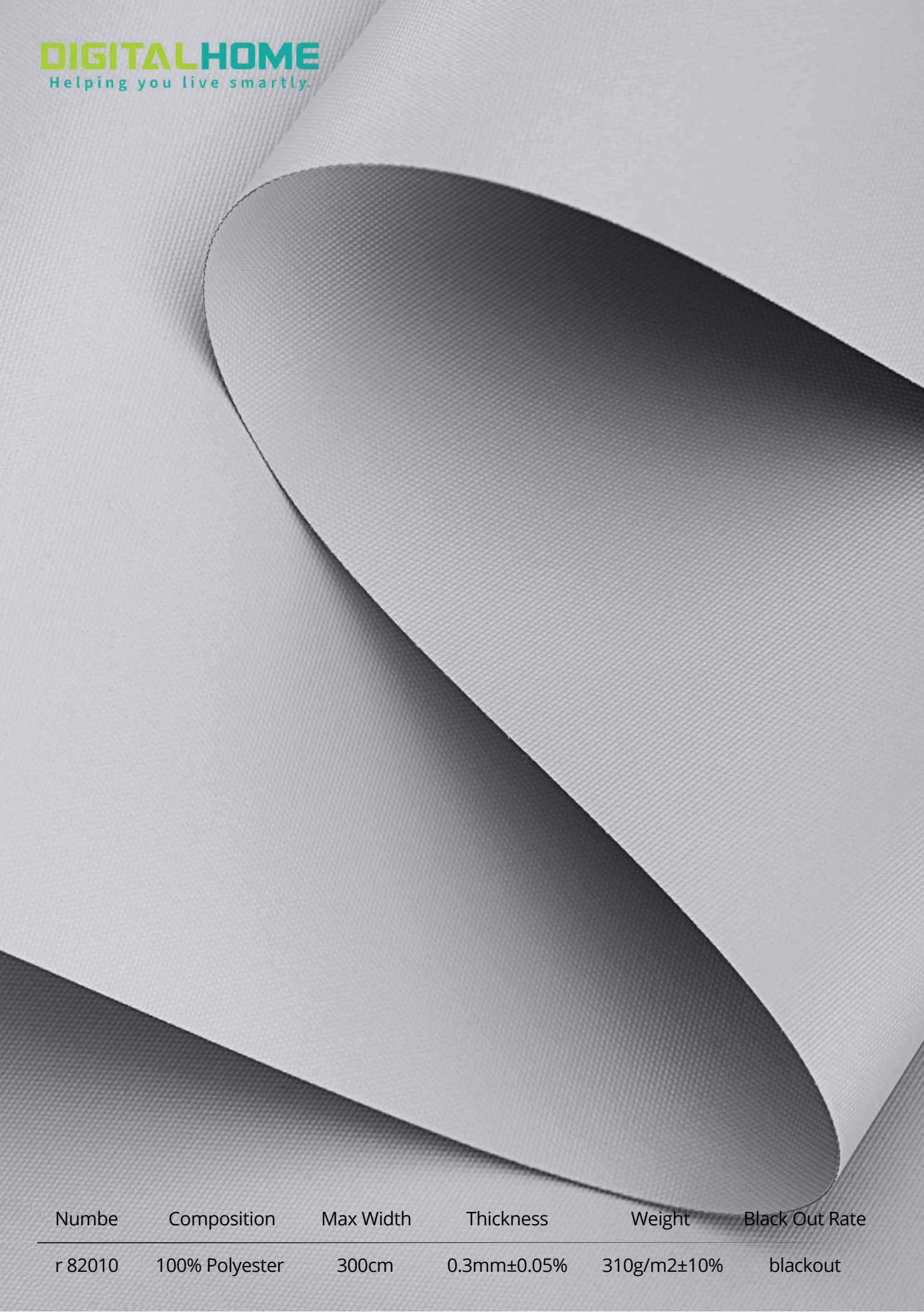
 82086D

 82086I

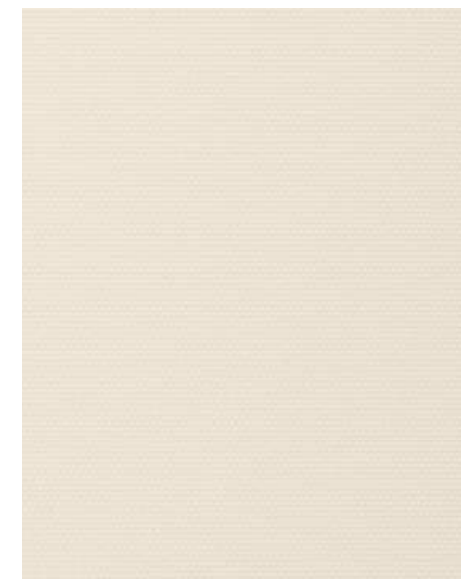


 82086E

 82086J



☀️ 82010J



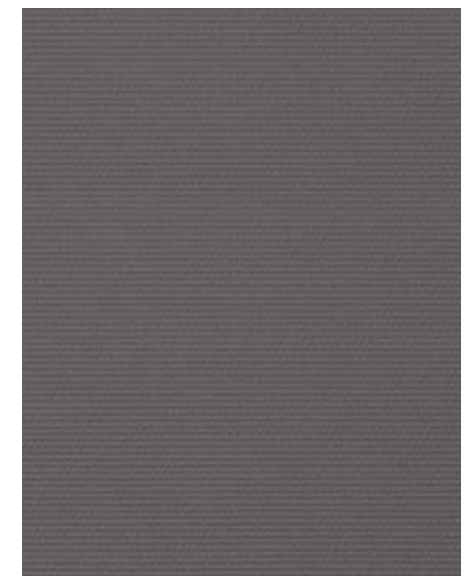
☀️ 82010T



☀️ 82010G



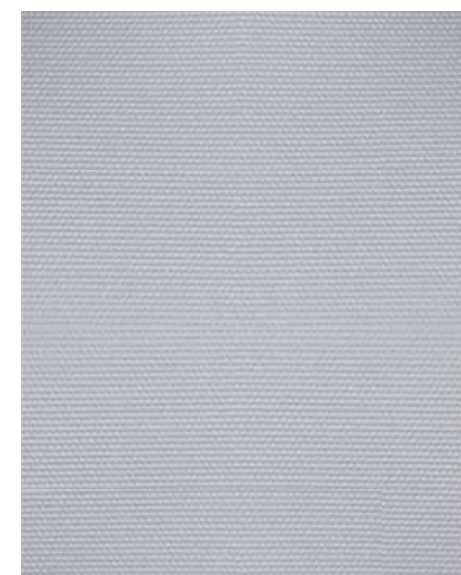
☀️ 82010S



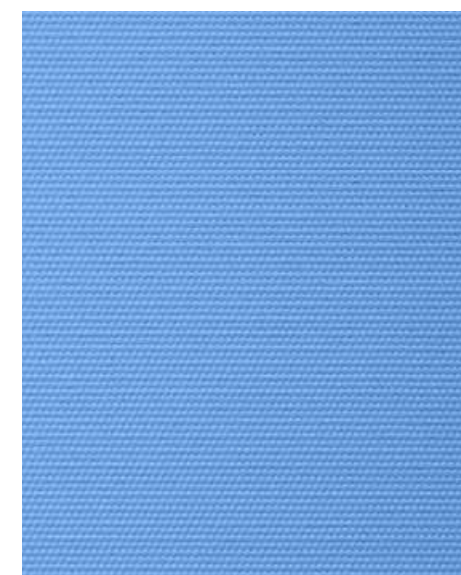
☀️ 82010I



☀️ 82010M

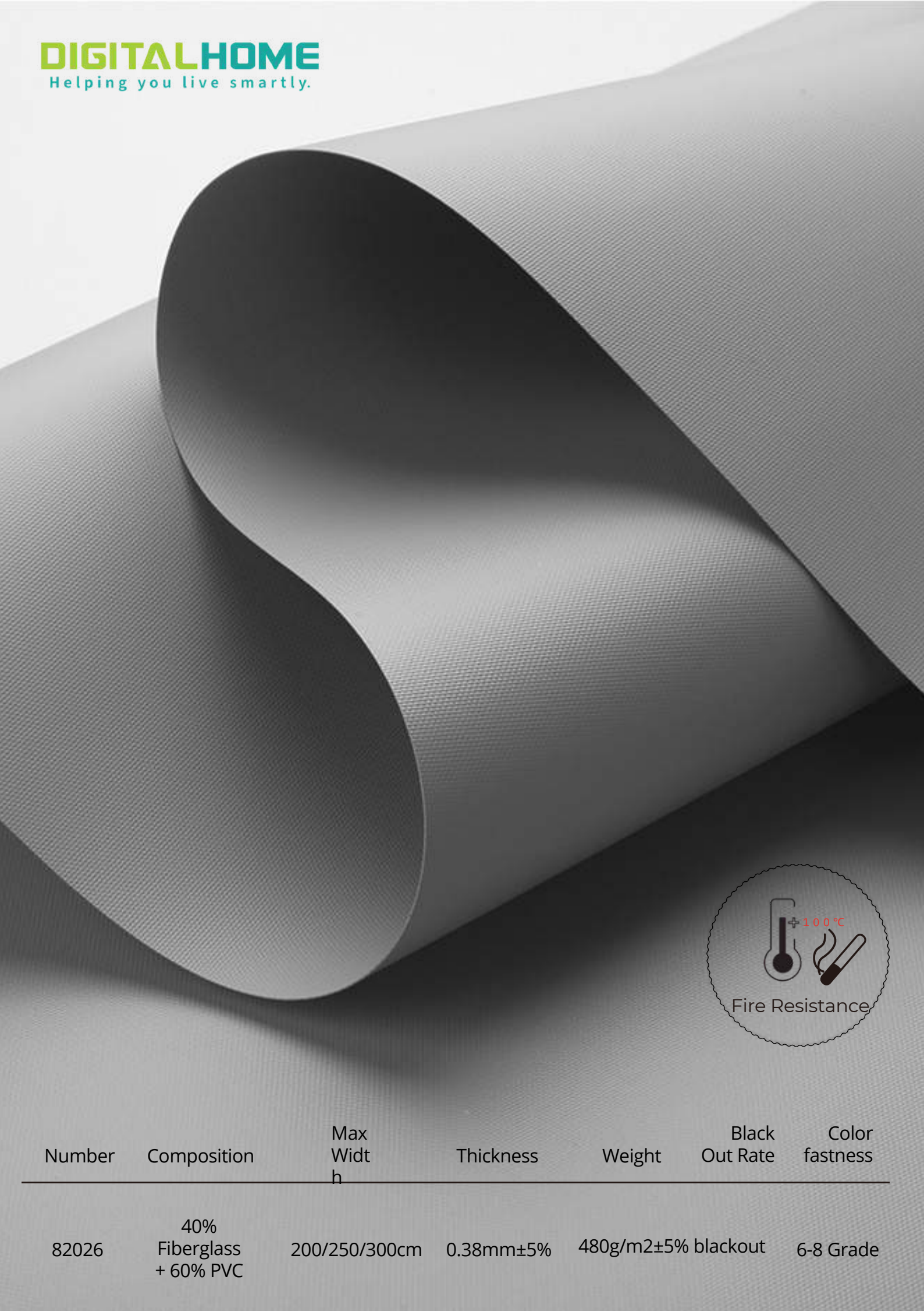


☀️ 82010L

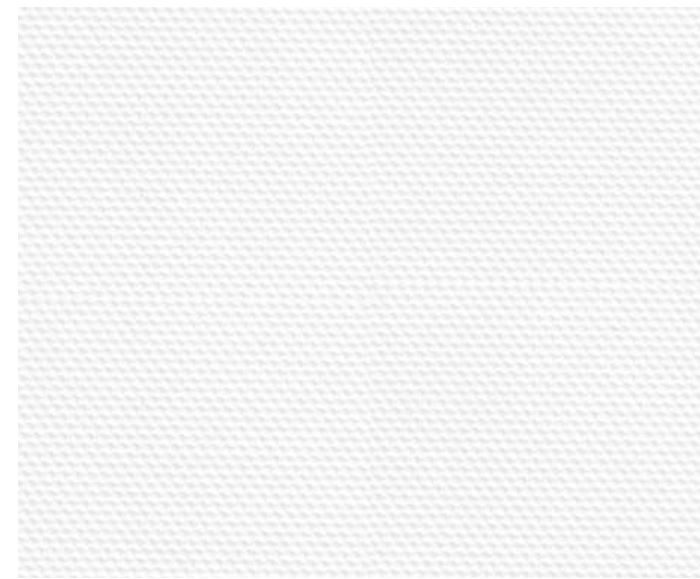


☀️ 82010W

Number	Composition	Max Width	Thickness	Weight	Black Out Rate
82010	100% Polyester	300cm	0.3mm±0.05%	310g/m2±10%	blackout



Number	Composition	Max Width	Thickness	Weight	Black Out Rate	Color fastness
82026	40% Fiberglass + 60% PVC	200/250/300cm	0.38mm±5%	480g/m2±5%	blackout	6-8 Grade



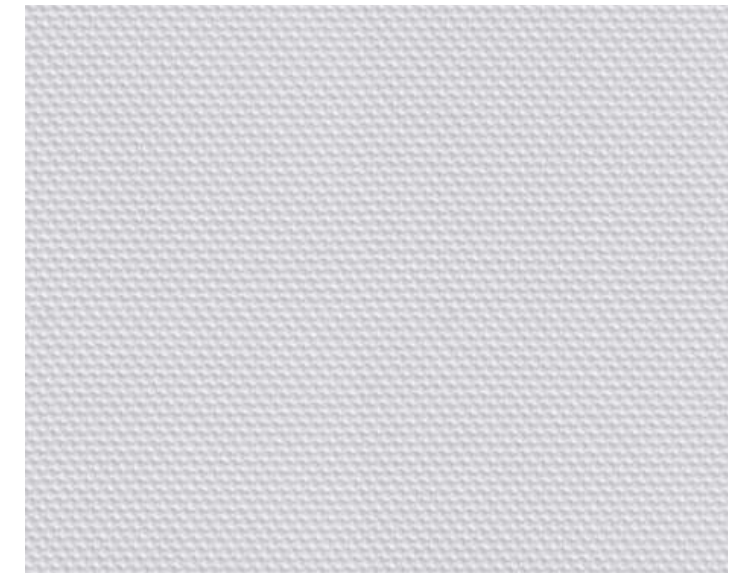
☀ 82026A



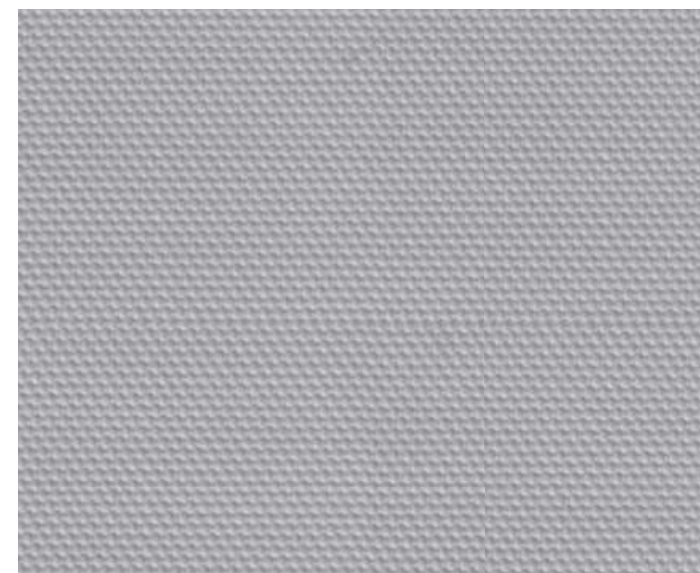
☀ 82026B



☀ 82026C



☀ 82026E



☀ 82026F



☀ 82026G



82132A



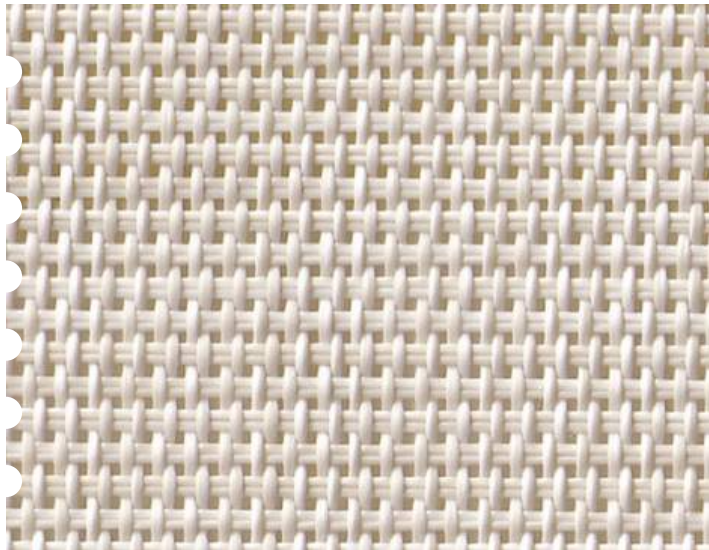
82132B



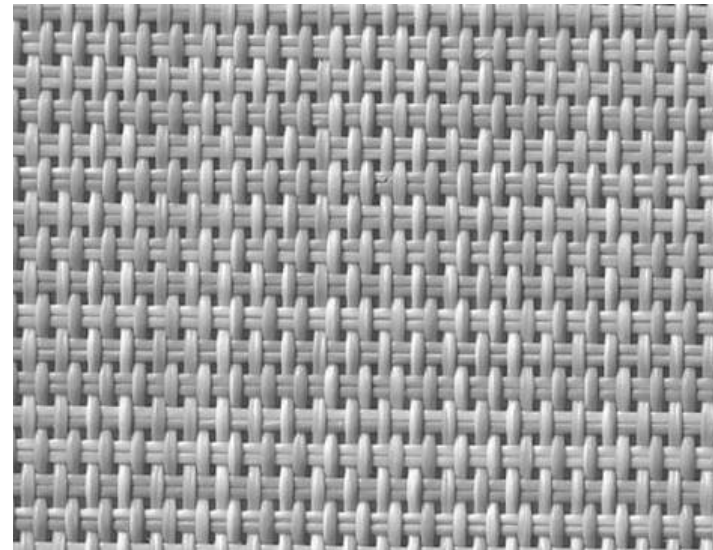
82132C



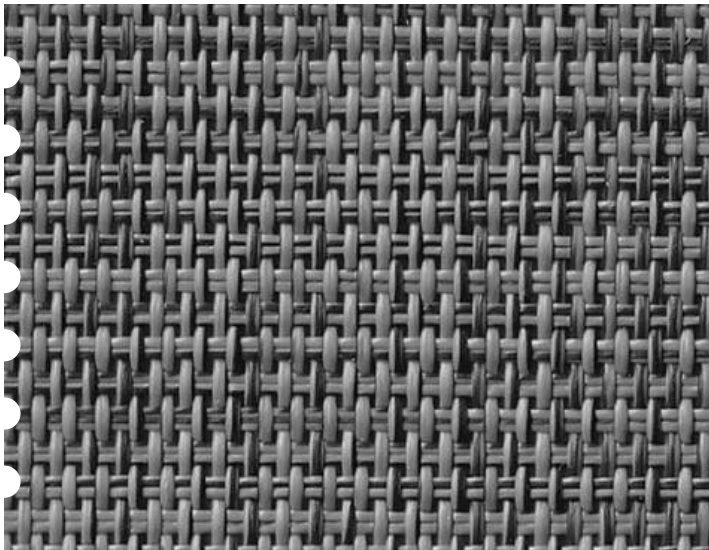
Number	Composition	Max Width	Thickness	Weight	1% openness factor
82132	30% Polyester + 70% PVC	300 cm	0.70mm ± 5%	467g/m ² ± 5%	



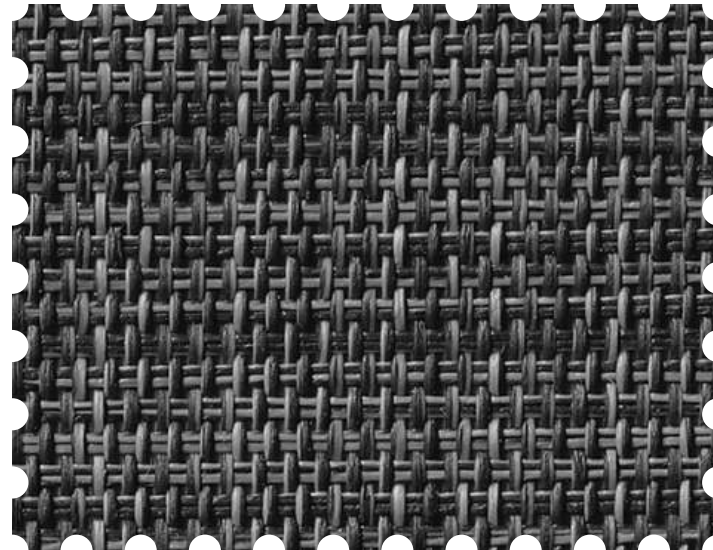
82088F



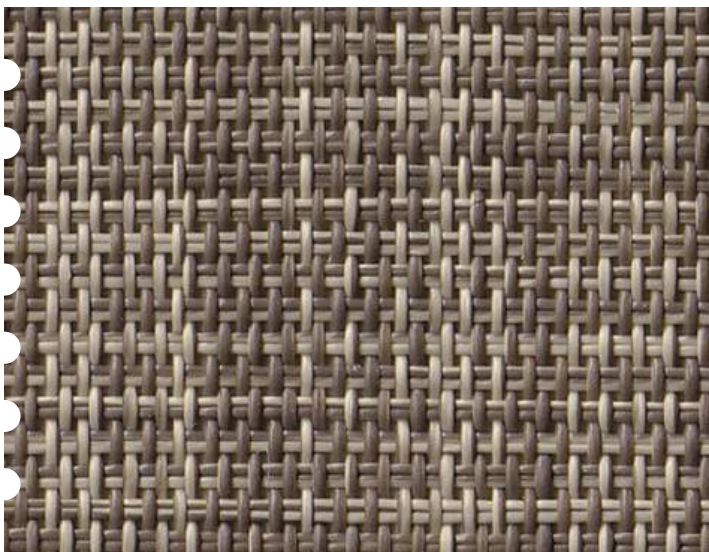
82088G



82088H



82088I



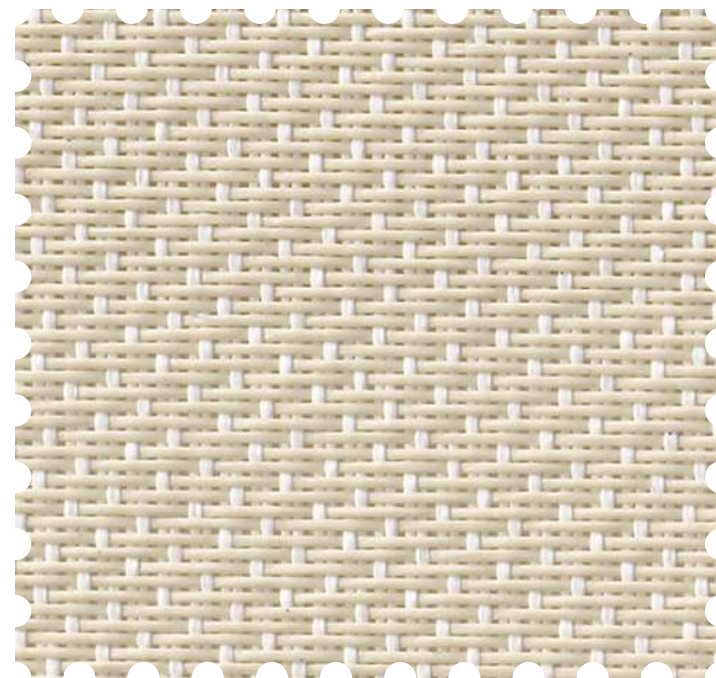
82088J



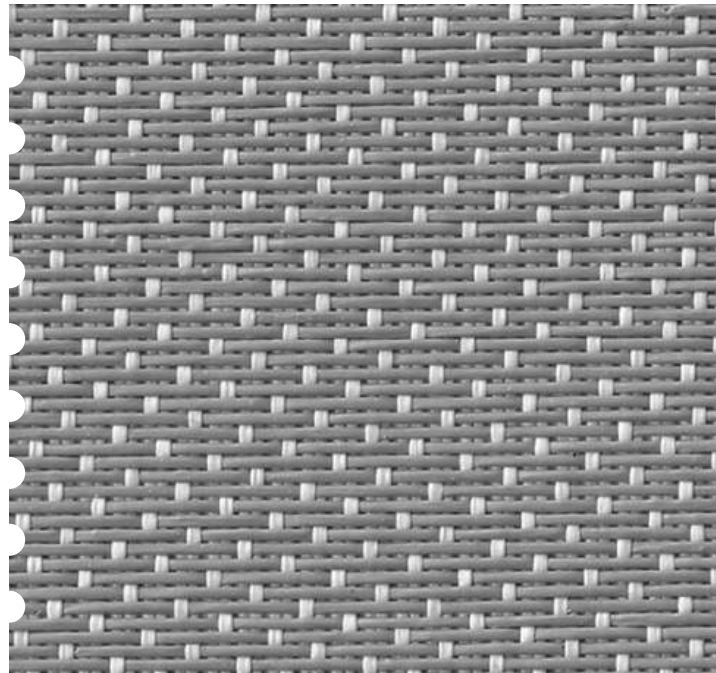
Number	Composition	Max Width	Thickness	Weight	5% openness factor
82088	30% Polyester + 70% PVC	300 cm	0.73mm ± 5%	428g/m ² ± 5%	



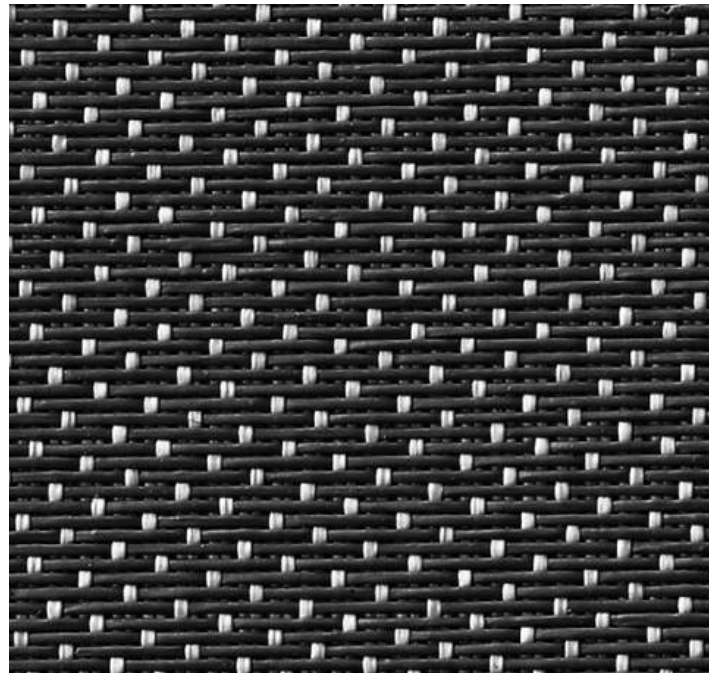
82025A



82025B



82025C

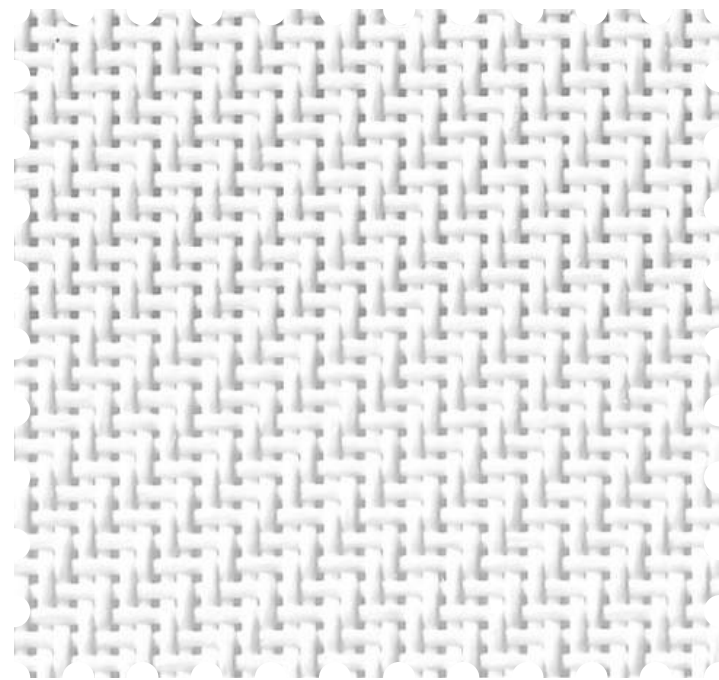


82025E

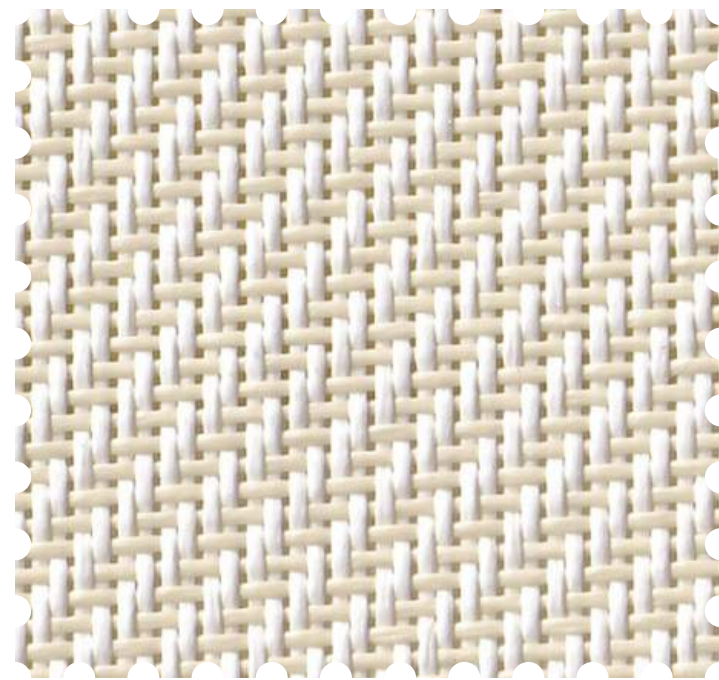


Number	Composition	Max Width	Thickness	Weight
82025	30% Polyester + 70% PVC	300 cm	0.66mm ± 5%	437g/m ² ± 5%

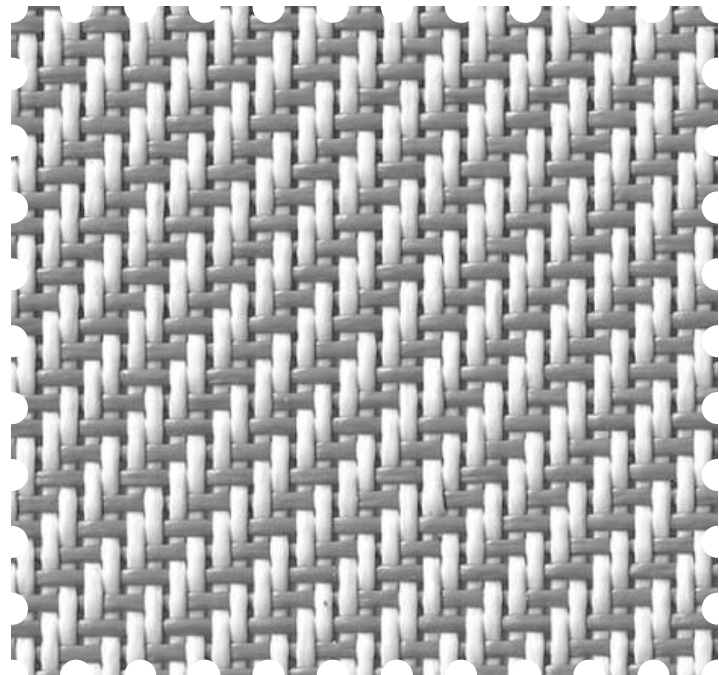
3%
openness factor



82025F



82025G



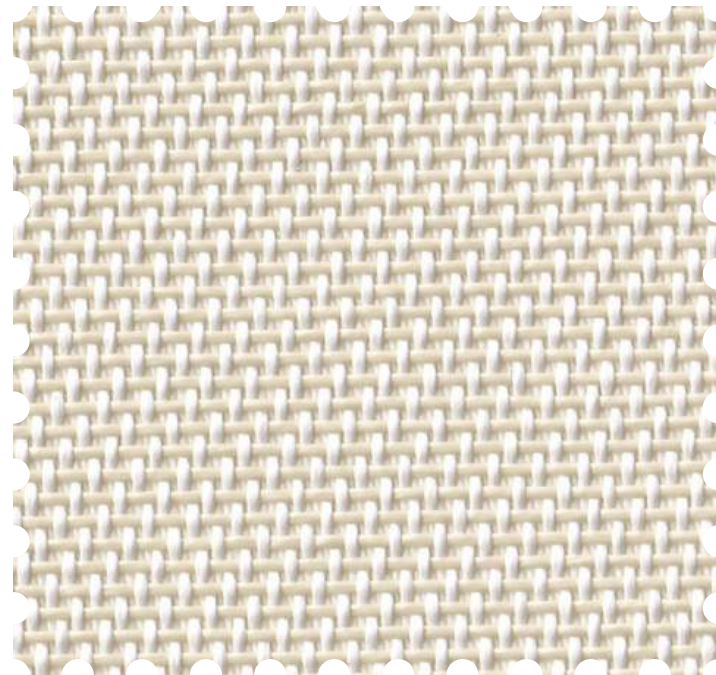
82025H



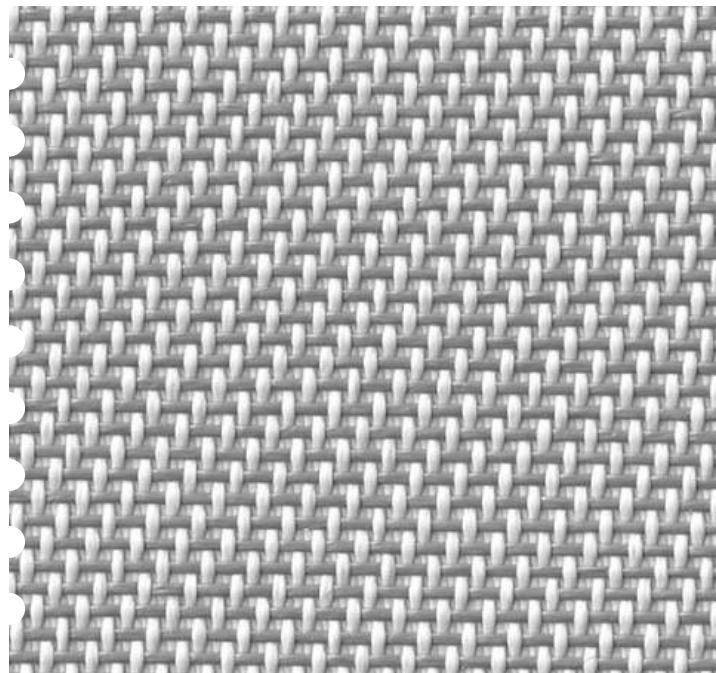
Number	Composition	Max Width	Thickness	Weight	3% openness factor
82025	30% Polyester + 70% PVC	300 cm	0.69mm ± 5%	476g/m ² ± 5%	



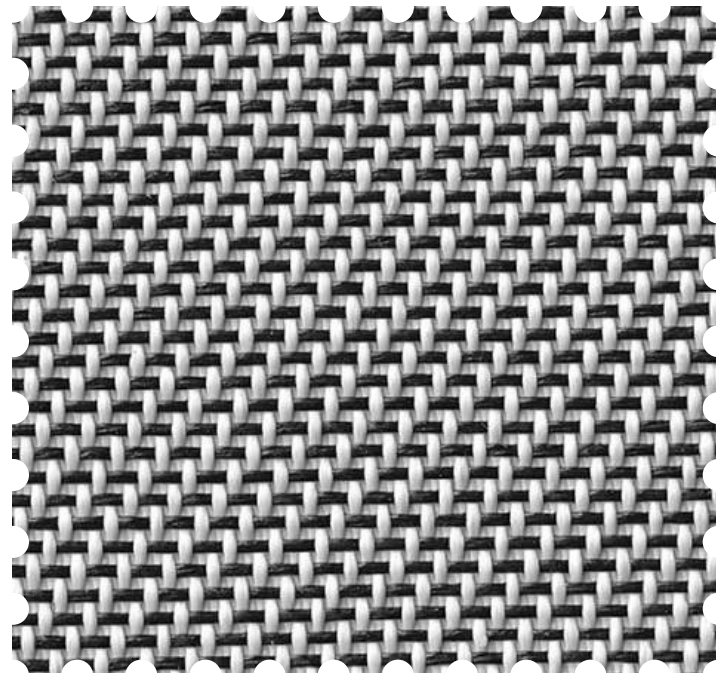
82024A



82024B



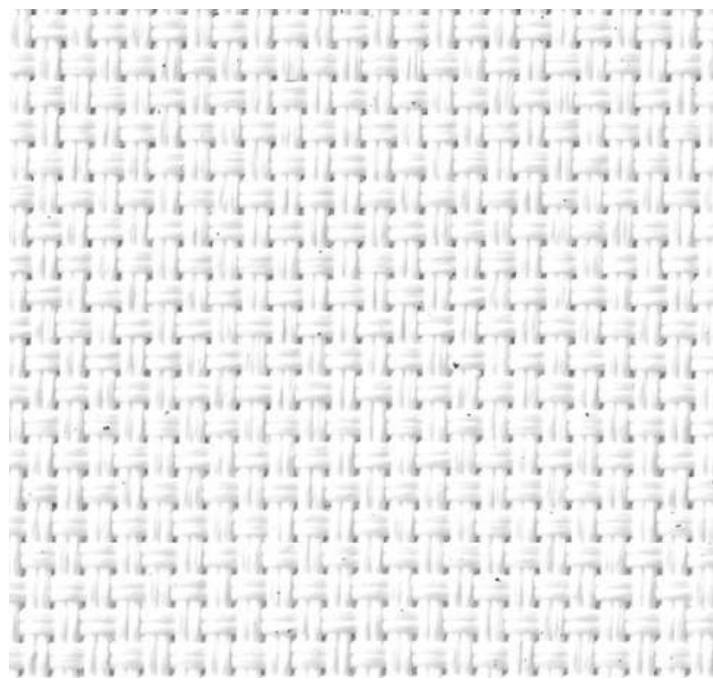
82024C



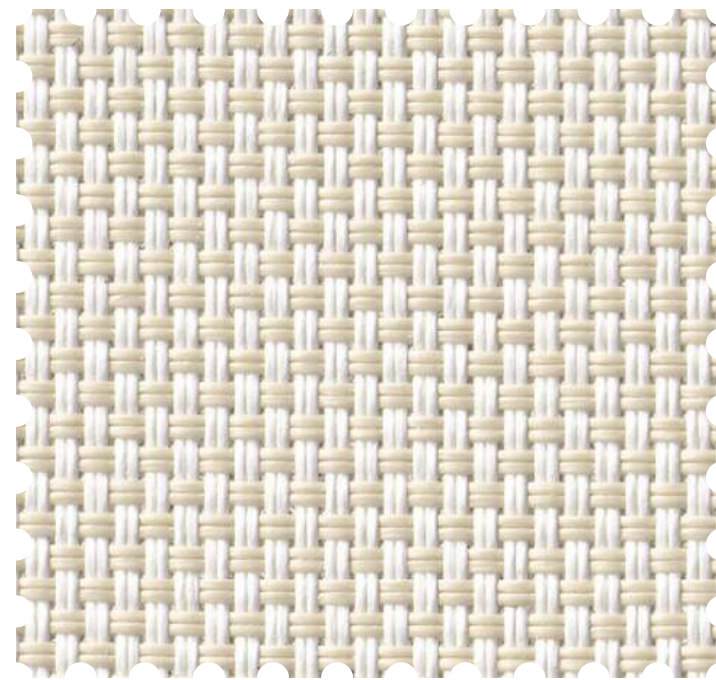
82024E



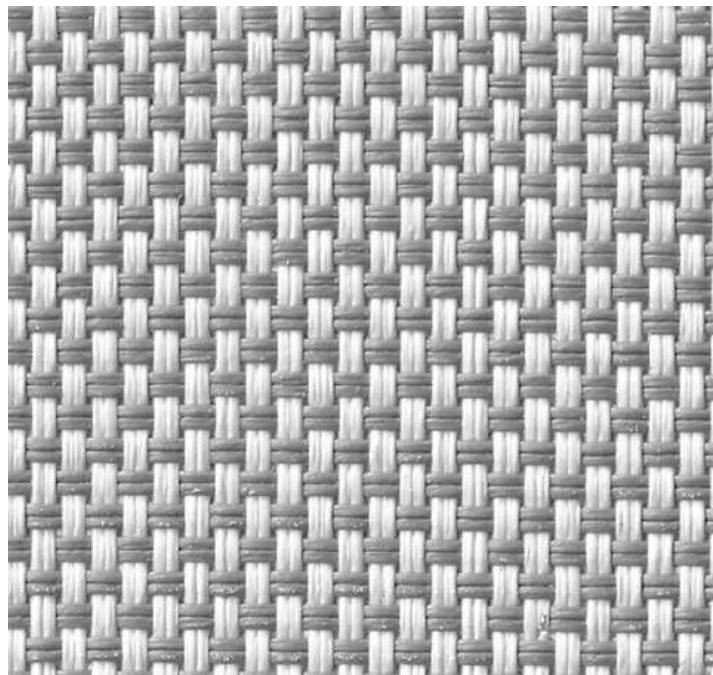
Number	Composition	Max Width	Thickness	Weight	1% openness factor
	30% Polyester + 70% PVC	300 cm	0.73mm ± 5%	525g/m ² ± 5%	



82006G



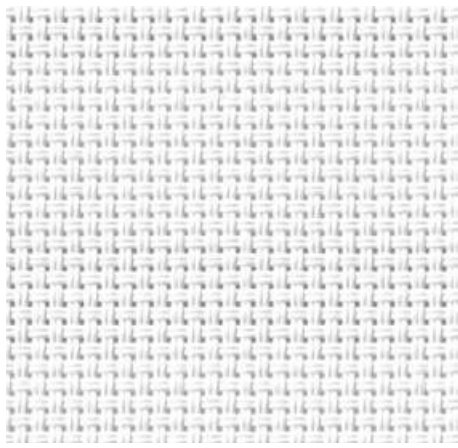
82006D



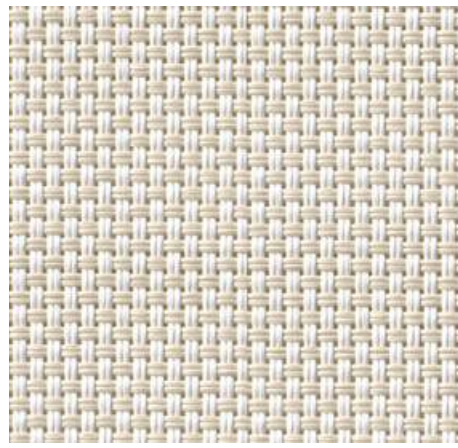
82006E



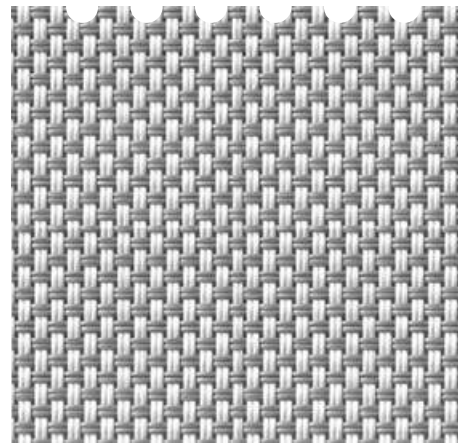
Number	Composition	Max Width	Thickness Weight	Black Out Rate	0% openness factor
82006	30% Polyester + 70% PVC	300 cm	0.84mm ± 5% / 663g/m² ± 5%	blackout	



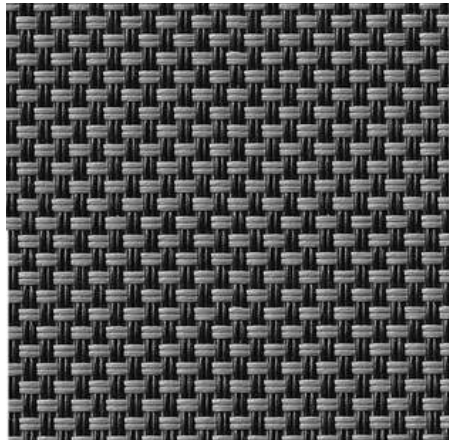
82006A



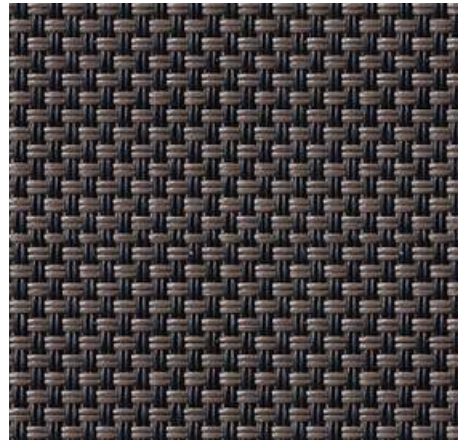
82006B



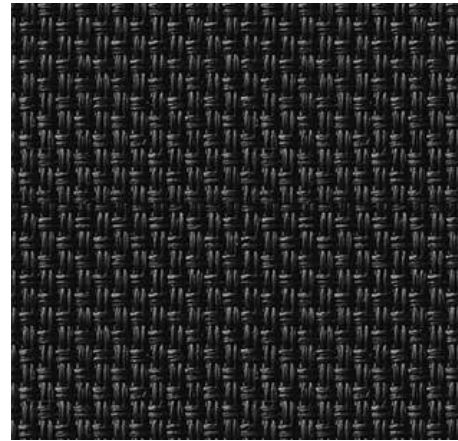
82006C



82006L



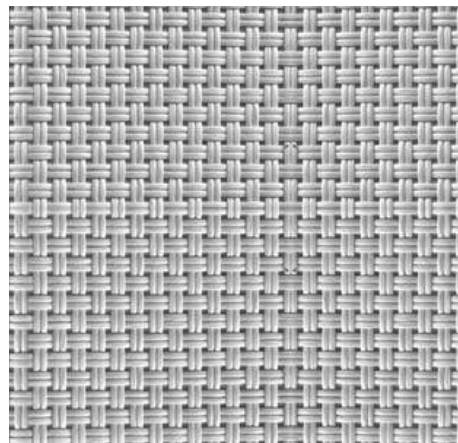
82006M



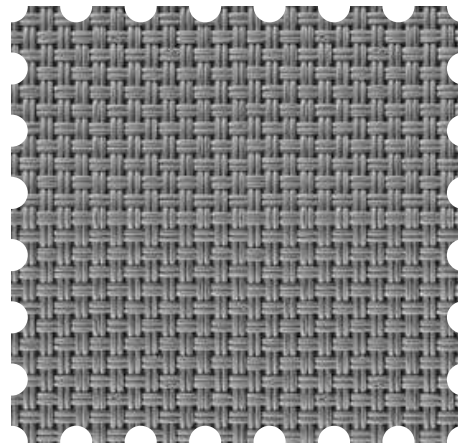
82006N



82006O



82006Q



82006R



Number	Composition	Max Width	Thickness	Weight
82006	30% Polyester + 70% PVC	300 cm	0.75mm ± 5%	520g/m ² ± 5%

5%
openness factor