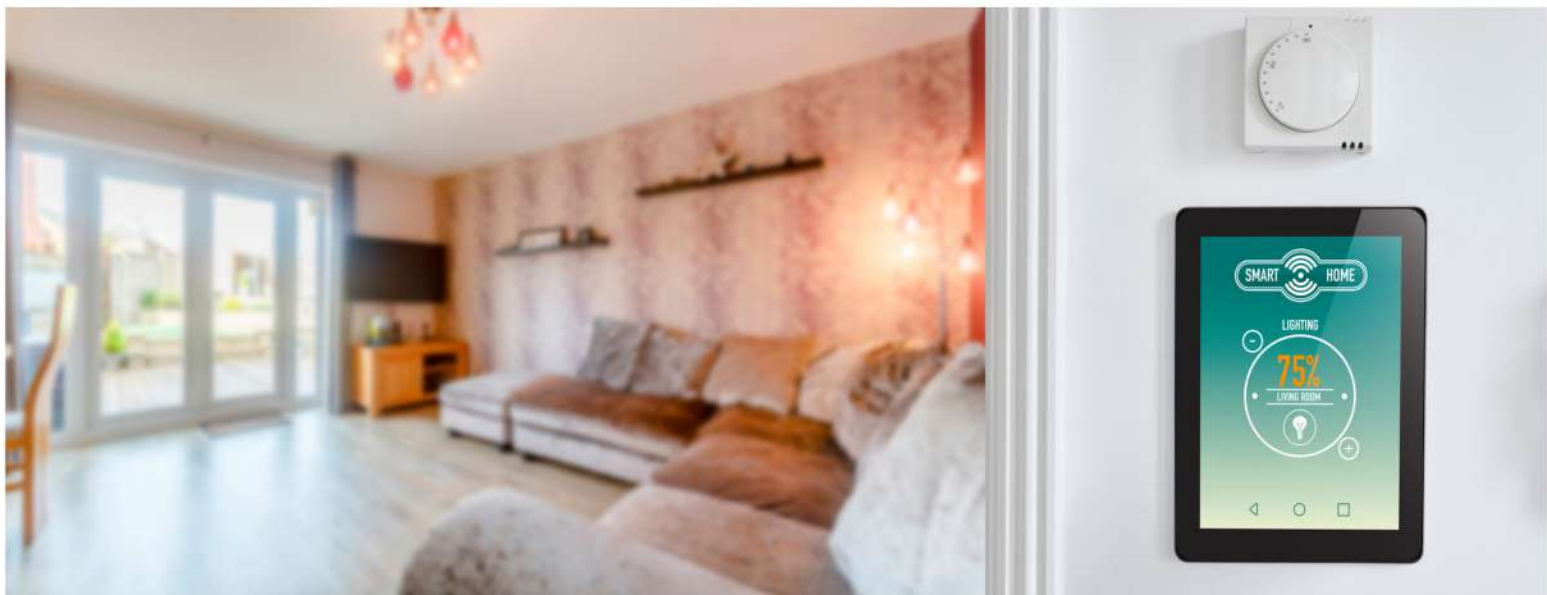




PRODUCT CATALOG

SMART SWITCH & SOCKET



Helping you live smartly.

DIGITALHOMEPH INCORPORATED

SMART SWITCH/DIMMER



SW100 SMART SWITCH

Brand: Digitalhome
 Working Voltage: AC110–240V, 50/60HZ
 Bearing Power: ≤1000W
 Power Consumption: ≤0.5W
 Connection Methods: L and N double-break switch

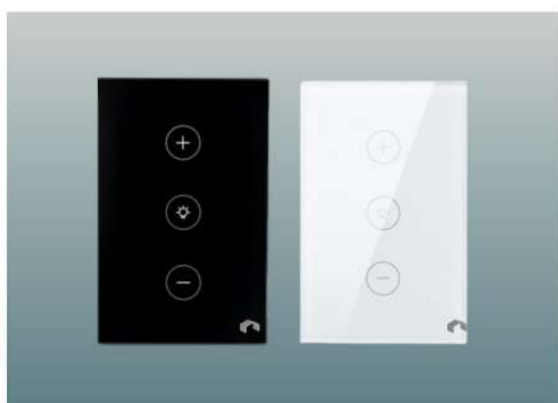
Price ₱ 1,900.00 ~ P2,100.00



SW600-S LCD SWITCH

Rated Load: 200 w/gang
 Weight: 0.3kg
 Panel: Capacitive Touch Screen
 Bottom Materials: Flame Retardant
 Working Voltage: AC 100-250 V 50/60 Hz
 Frequency: 2.405 - 2.480 GHz
 Receiving Sensitivity: -97dbm
 Dimensions: 120mm * 74mm

Price ₱ 5,150.00



SWD700 DIMMER

Working Voltage: AC110–240V, 50/60HZ
 Bearing Power: ≤1000W
 Power Consumption: ≤0.5W
 Gang: 1gang
 Power capacity: 400watts
 Weight: 165grams
 Size: 12 x 7.6 x 3.2 cm
 Power supply: Neutral and live

Price ₱ 2,100.00



SW600-D LCD DIMMER

Rated Load: 200 w/gang
 Weight: 0.3kg
 Panel: Capacitive Touch Screen
 Bottom Materials: Flame Retardant
 Working Voltage: AC 100-250 V 50/60 Hz
 Frequency: 2.405 - 2.480 GHz
 Receiving Sensitivity: -97dbm
 Dimensions: 120mm * 74mm

Price ₱ 5,150.00

SMART SWITCH

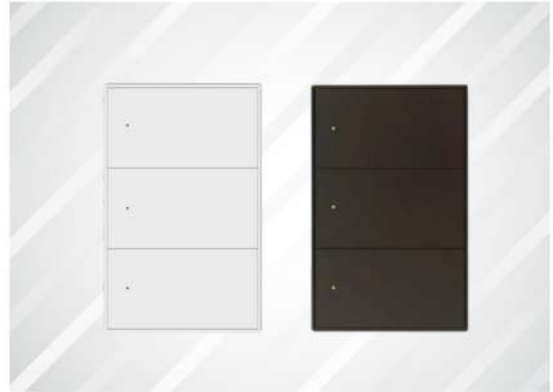
**NO NEUTRAL
REQUIRED**



SW400 SMART SWITCH

Brand: Digitalhome
Wireless: ZigBee
Working Voltage: AC110-240V, 50/60HZ
Max power: 5W-300W/gang
Shell material: PC Anti-fire
Power Consumption: ≤0.5W

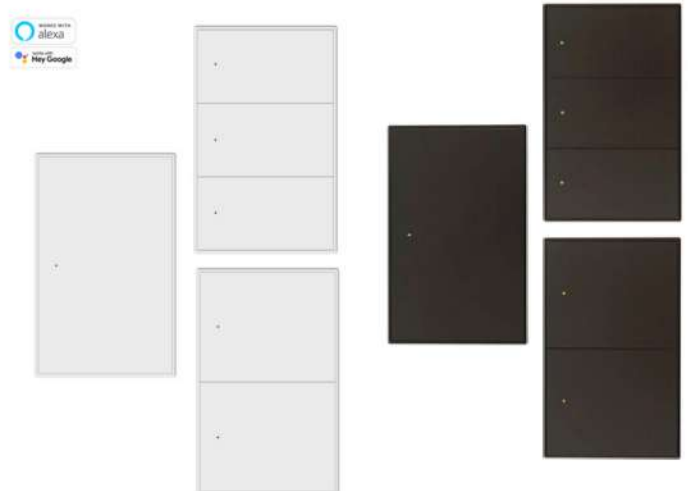
Price ₱ 2,100.00 ~ P2,300.00



SW410 MECH SWITCH

Brand: Digitalhome
Wireless: ZigBee
Working Voltage: AC110-240V, 50/60HZ
Max power: 1000W/gang
Shell material: PC Anti-fire
Power Consumption: ≤0.5W
Rated Current: 16A

Price ₱ 2,100.00 ~ P2,300.00



SMART HOME CONTROLLER



CTR100 HOME CONTROL

Screen: 6 inch
Wireless protocols: BLE, Wi-Fi, Zigbee
Input voltage: 220V,50/60Hz
Power: 200W per Circuit
Port: RJ45, RS485
Weight: 0.31kg
Product Size: 206 * 86 * 52mm
Wiring: Neutral wire required

Price ₱ 18,500.00



CTR200 HOME CONTROL

Screen size: 4 inch
Max. Voltage: 100-240V
Max. Current: 6A
APP: Globe Suite
Built-in Protocol: WiFi, Bluetooth, Zigbee
Working Temperature 0°C to +40°C
Dimension: 120 * 74mm

Price ₱ 9,500.00

SIMPLE AND ELEGANT DESIGN

The matte gray that highlights the metallic feeling can be easily integrated into most interior decoration styles, and the excellent appearance can add a look to the home.

US Multi-function Control Panel



- Devices Control
- Scenes Interactions
- Zigbee Gateway
- US Wall box Compatible
- App Control



SMART SOCKET



SP320 SMART SOCKET

Style: Wi-Fi Smart outlet
Voltage: 110 to 240v
Current: 15A
Flammability: Rated V-2 per UL498
Weight: 8.8 ounces / 0.25 kg
Dimension: 6 x 4 x 3 inches

Price ₱ 1,850.00



XP100 POPUP SOCKET

Material of Shell: aluminum alloy
Current: 13A
Rated input: 10A / 250V
USB output: 5V / 2.1A
Holes size: 102mm
Mobile App: Globe Suite
Certification: CE, SAA, ISO
Dimensions: 425 * 120mm

Price ₱ 11,500.00



SP110 WIFI SOCKET

Brand: Digitalhome
Voltage: 90 - 250V AC
Frequency: 50 - 60Hz
WiFi: 2.4GHz
Max current: 10A
Maximum Power: 1200W
Weight: 62grams
Dimensions: 10.4 * 10.4 * 5.8 cm

Price ₱ 890.00



SP700 WIFI EXTENSION

Input: 90-250V~, 50/60Hz
Output: 10A for single outlet, 16A for three outlets
USB port: 5V at 2.1A for single USB port,
5V at 3.1A for dual USB ports
Power Cord: 5.5-foot long
Wireless Standards: IEEE 802.11 b/g/n, 2.4GHz, 1T1R
Wireless Security: Support 64/128 bit WEP, WPA-PSK/WPA2-PSK
Certification: FCC, ETL

Price ₱ 2,595.00



CATALOG

SMART SWITCH & SOCKET

Helping you live smartly.