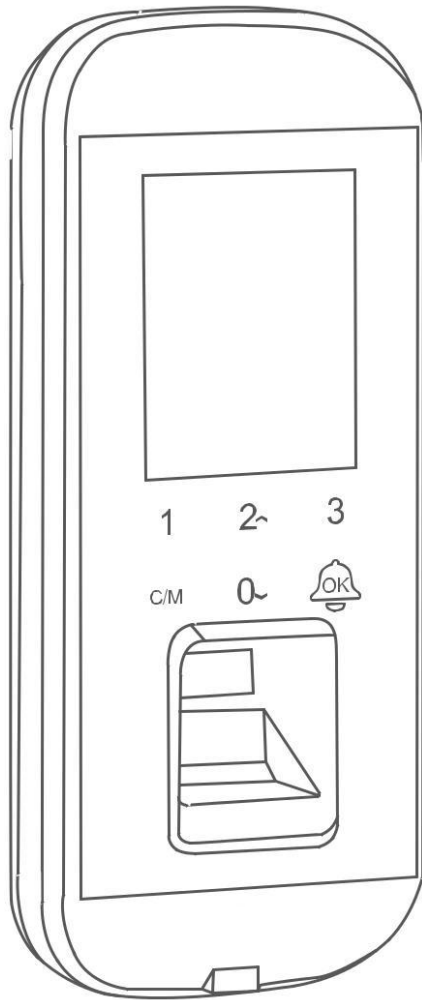


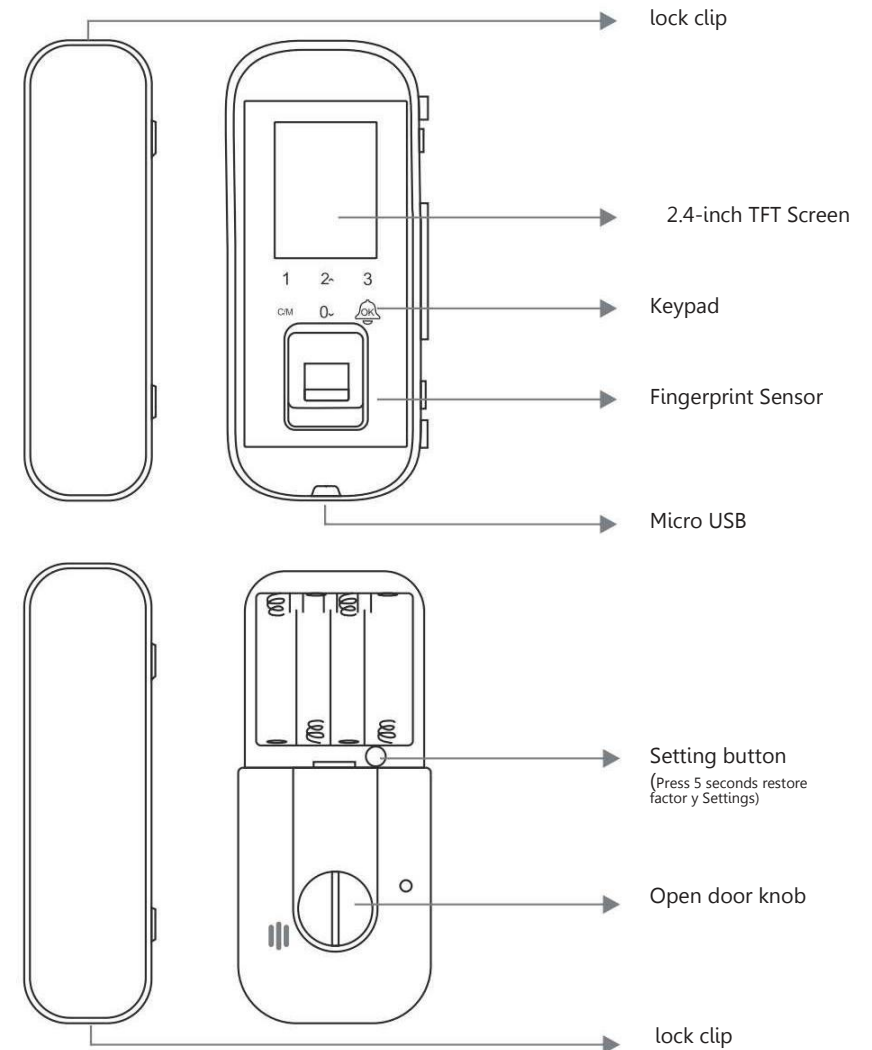
DigitalHome Glass Door Smart Lock with Fingerprint Access

Operating instruction



Product features

1. When entering the "main menu bar", the Numbers 0, 2, C/M, OK, 2 are upturned, 4 is left key, 0 is the lower key, C/M is the return key, OK is the confirmation of health.
2. Enter the main course.
 - 2.1 the lock is in the factory state, and the long press the touch panel C/M key to enter the main menu bar interface.
 - 2.2 when the user is added in the lock, press "C/M" on the button panel and the screen "please enter the administrator" and enter "administrator" to enter the main menu bar interface.



Function menu navigation

Factory Settings

1. Install the battery, hold the setting button for 5 seconds, and force the factory to restore the factory setting.

Administrator sets and deletes.

Administrator setup

Press the "C/M" screen on the button panel to display "user management", select "new administrator", and select "fingerprint" or "card" or "password" to register to complete the operation. Click "C/M" to confirm that the administrator "fingerprint" or "card" or "password" can enter the main menu interface, and can be registered with the administrator.

Note: please change the password of the initial administrator and set the administrator immediately after the installation and debugging, in order to prevent the security hidden trouble!!!

Delete admin

Long press on the button panel "C/M" screen "administrator verification", after validation administrator into the menu, select "user management", "delete user" turn key "2" key on the through select administrator to delete the "0", press "OK" to confirm.

Administrators have the highest authority to change and delete user permissions.

Add user

Long press on the button panel "C/M" screen "user management", press "OK" to confirm, select "new user" and press "OK" to confirm, enter the menu interface, according to the screen prompt "job number, name, fingerprints, password, ID card, sector", select the option to add. The digital password is made up of 6 digits, the fingerprint must be entered 2 times, and the card is successfully configured. After confirming the success, press the "C/M" button to exit the menu. If you register multiple users, repeat the above operation.

Delete user

Delete users: long press "C/M" the button panel screen display "user management", press "OK" to confirm, select "delete user", through the turn key is "2" key "0" select the user to delete, press "OK" to confirm, if you want to continue to delete to delete multiple users, repeat the above operation.

Language setting function: Chinese and English selection.

Language Settings: long press on the button panel "C/M" to enter the main menu, through the turn key is "2" key "0", select system Settings, press the "OK" key to confirm, based on the menu, select the language option, press the "OK" key to confirm, by the turn key is "2" key "0", choose to use the language (Chinese and English) mode, press the "OK" key to confirm after finish the installation in accordance with the "C/M" exit

Modify user name

Long press on the button panel "C/M" screen "administrator verification", after validation administrator into the menu, select "user management", press "OK" to confirm, choose "user export" press "OK" to confirm, conversion head inserted into the machine provided with emergency power interface, in the U disk into the conversion head, finished, then press "OK" button to confirm and download automatically. When completed, will U disk into the computer, open the U disk to find "user data" Excel file, open, modify the user name after the save, the insert U disk to convert, completed, long press on the button panel "C/M" screen "administrator verification", entered the menu after validation administrator, choose "user import" press "OK" to confirm, finished, choose "user data" press "OK" to confirm operation is completed.

Scheduling Settings

Long press on the button panel "C/M" screen "administrator verification", after validation administrator into the menu, select "download data" press "OK" to confirm, conversion head inserted into the machine provided with emergency power interface, in the U disk into the conversion head, is completed, press the "0" turn key select "set statements" and then press "OK" to confirm, download automatically. When completed, will U disk into the computer, open the U disk to find "Settings statements" Excel file, open the modification time to work, after the completion of the save, the insert U disk to convert, completed, long press on the button panel "C/M" screen "administrator verification", entered the menu after validation administrator, select "upload data" press "OK" to confirm, is completed, can be installed into the defined "shift" to see good work time.

Attendance record enquiry

It is the function of the administrator to the specific user's lock time, and is a statistic of staff attendance. Attendance record query: long press on the button panel "C/M" screen "administrator verification", entered the menu after validation administrator, conversion head inserted into the machine provided with emergency power interface, the insert U disk to convert, select "download data", then press "OK" key to confirm, choose to download the form, press "OK" to confirm, after, set to start or end time range, press the "OK" key, through the turn key is "2" key "0" to choose time, finished, press the "0" turn key choose the "output" and then press "OK" button to confirm.(open lock record can store 99999 items)

Set the time

It is correct to lock current, make lock record more accurate, more effective.

Select "time setting", press "OK" to set the date and time, then press "OK" to confirm, and then return to the main menu automatically according to C/M or system.

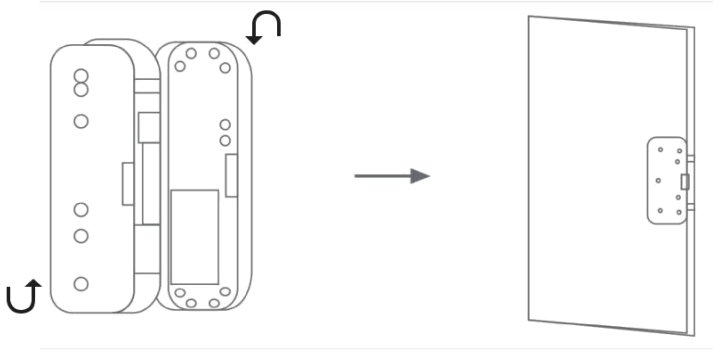
Appendix a

Door locks common failures and exclusions.

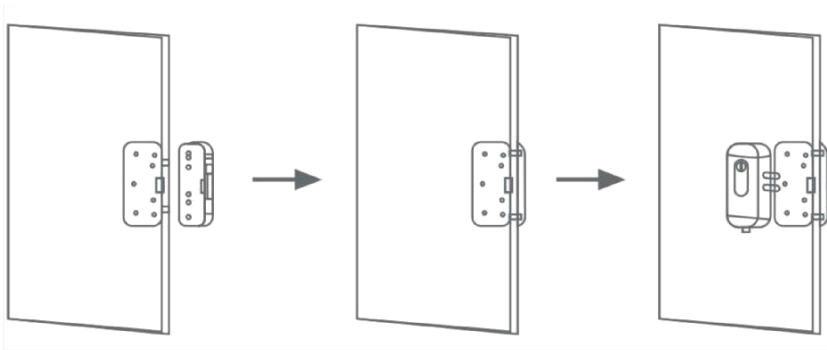
The fault phenomenon	Possible reasons for	Elimination method
Door card/fingerprint/password.unlocking	① Run out of battery ② Other	① Replace the battery or emergency power switch. ② Please contact after service.
Keep your tongue still.	① The door is not aligned ② Battery is low	① After the door is divided, try again. ② Unlock with emergency power.
Unable to read fingerprint	① The skin of the fingers is dry and wrinkled. ② Used for a long time, the collection surface is not clean or scratches. ③ other	① It makes the finger feel a little moist to make the fingerprint clear. ② Use no adhesive tape to paste the dirt on the head surface. ③ If there is any problem, please contact the supplier for warranty.
You can't close the door automatically	① Run out of battery ② It's not automatic lock mode.	① Replace the battery ② Set to auto lock mode.
Cannot set door lock/fingerprint/password.	① It was not authorized. ② There are no steps to authorize. ③ The total number of gates and passwords exceeded 1,000.	① To obtain authorization (input management fingerprint. ② Refer to the front door lock setting to follow the steps. ③ Delete unwanted door card/fingerprint/password
The screen does not display/white screen/screen.	Screen bad	Replace display screen

Installation Diagram

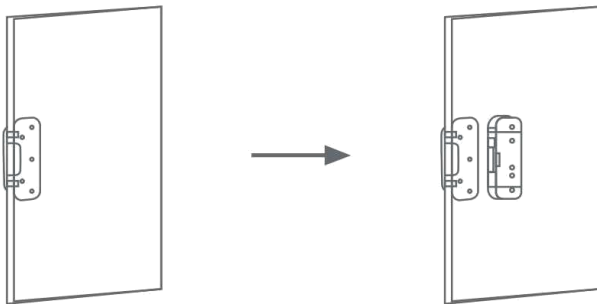
1. Adjust the direction of the lock body
2. Installation mounting panel



3. Installation lock body



4. Installation lock clip



PRODUCT WARRANTY

The user name		Contact phone number	
Address of the user			
The product name		Model	
Purchase date			
The project name			
Maintenance reasons			

WARRANTY CARD

The user name	
Address of the user	
Contact phone number	
Buy site	
model	
Signature of distributor	

The warranty:

1. Half a month from the date of goods sold, such as performance failures occur, the commodity itself and the outer packing must be whole (no scratches), can replace the same type of products, (must be approved by check) is not including artificial damage.
2. The goods are guaranteed for one year from the date of sale, and the accessories are not covered by the warranty.
3. The warranty service is valid only for normal use.
4. All appearance damage, such as personal damage, self-disassembly, unsealing, improper use, etc., shall not be covered by warranty. The warranty card must provide this card, cannot provide this card or the private alter this card, the company has the right to make the non-warranty treatment.