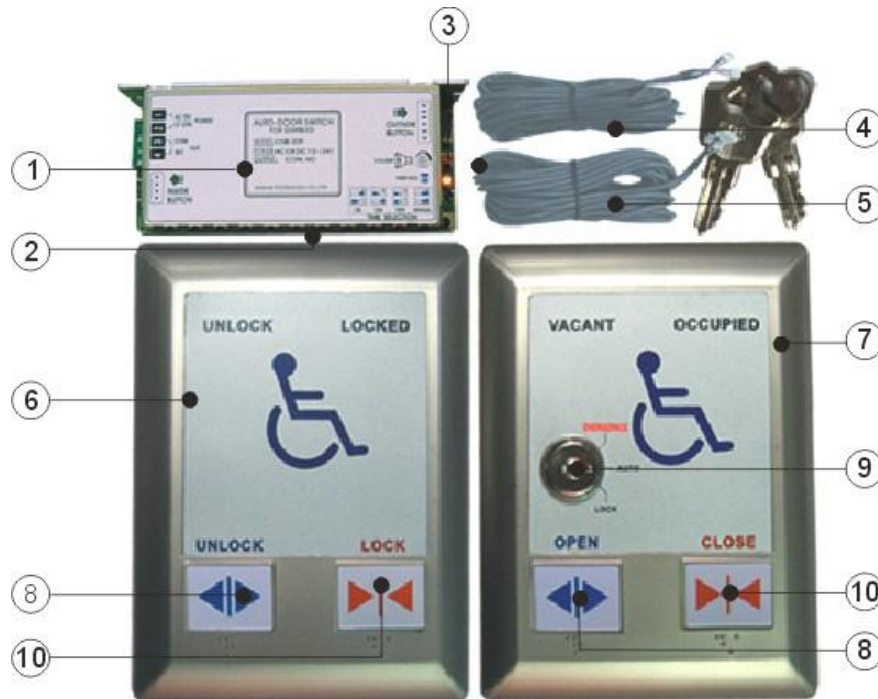


## ACC700 AUTOMATIC DOOR SWITCH FOR PWD

### Safety instructions

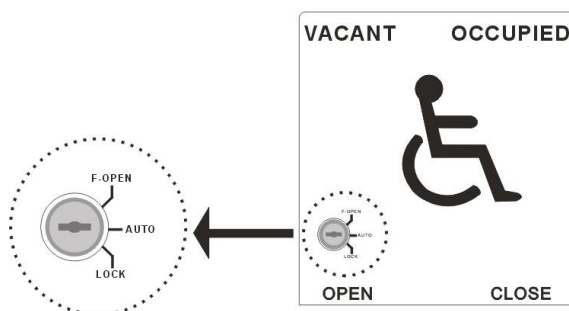
Thanks for purchasing this product, in order to use the product properly ,please read this operations guide before using.

### Product overview



- ① Main controller
- ② Voice speaker (Side to speak out)
- ③ Volume adjustment
- ④ 6 set line
- ⑤ 7 set line
- ⑥ Inner panel
- ⑦ Exterior Panel
- ⑧ Open button
- ⑨ Function switch button
- ⑩ Close button

### Function display



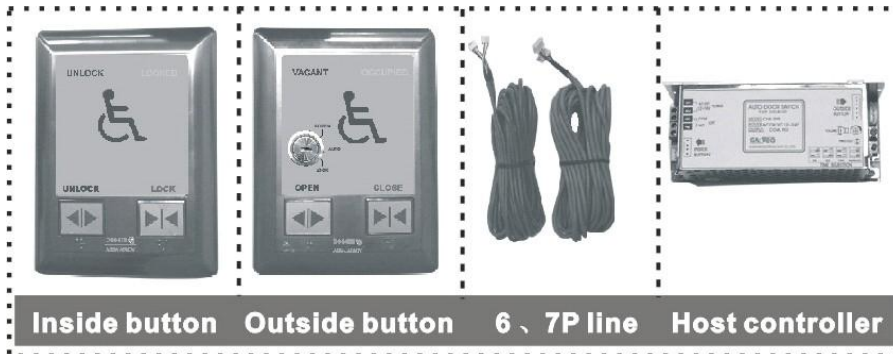
- 🔑 Emergency opening: Call panel does not work, when you use it difficult you can open the door forcibly for emergency relief.
- ➡ Automatic: Internal and external calls to Panel normal work, the system runs automatically in the normal state.
- 🔒 Lock: Internal and external call Panel does not work , the system is closed, to stop the use of external.

**Note: Use the key to open the emergency off or lock should make the key to go to the normal use position to return to the initial status of normal use.**

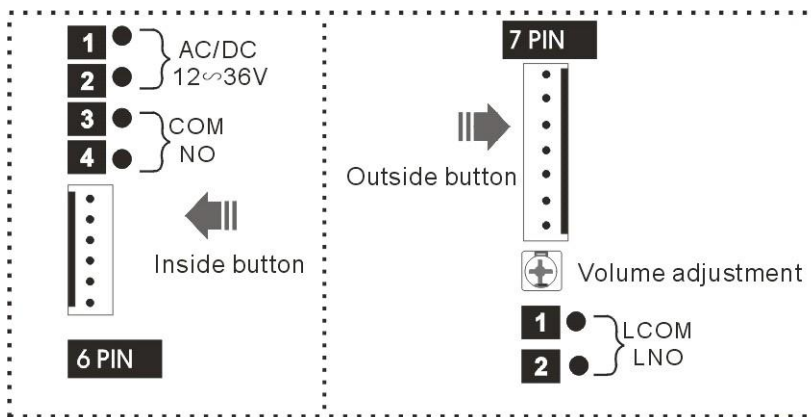
## Using process

- 1、Dedicated for disabled toilet doors automatic, large-panel design and is equipped with voice prompts.
- 2、Normal standby, the panel display no one outside.
- 3、Press the open button to automatically open the door with voice prompts. Internal panel should display unlocked, warning to close pressing the locking key on the Panel after entering the toilet, door closed automatically, at the same time there are closed for the voice prompt. At this point the outer panel on led is lit, and internal panel displays locked. In this State, press any key on the outside panel there is using voice prompts, and doors will be opened until the inside of door keys is pressed and the door will automatically open after dialing settings with option to choose for 5 seconds, 15 seconds, and 15 minutes or turn off automatically or manually.
- 4、The emergency open button is a convenient way to signal for help in opening the door.
- 5、Through the lock button to lock the system, when the staff after work, so that the door is in a Safety closure state, to stop the use of external.

## Component parts of products



## The wiring diagram of input and output



## Composition and method of dial settings

Composition	
LIST	Quantity
Audio (Built-in)	1EA
Host Controller	1EA
External switch	1EA
Internal switch	1EA
Key	2 EA
7P wire	1 EA
6P wire	1 EA
Screw4×18	8 EA

Setting Method	
ON	TIME
Button 1	5seconds
Button 2	15secods
Button 1 Button 2	15minute
Button 1 Button 2 OFF	By hand

## Technical specifications and parameters

Operating voltage:	AC/DC 12~36V
Switch Controller:	142(L) x 58(W) x 40(H)mm
Panel Size:	160(L) x 120(W) x15(H)mm