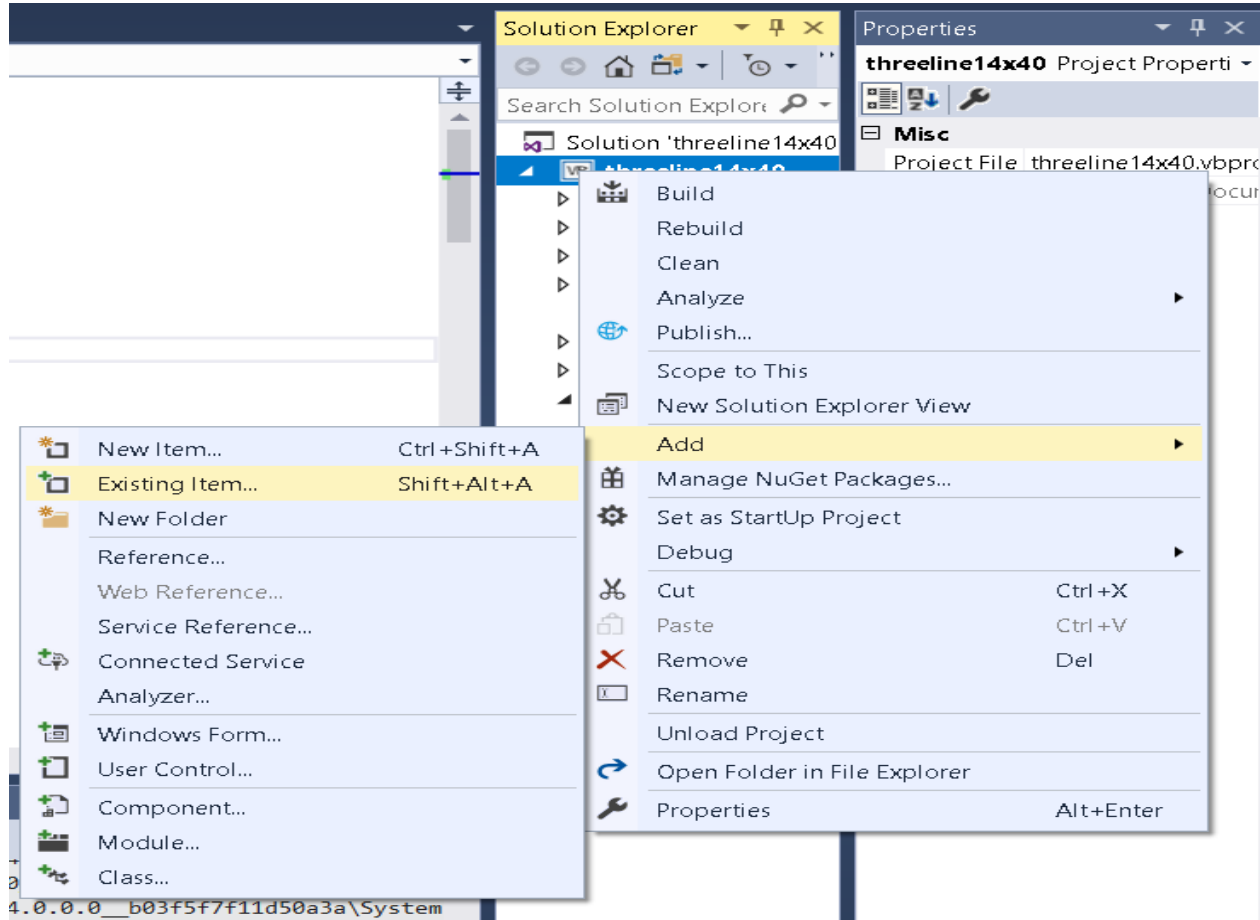


## Easy-use Manual Instruction for VB

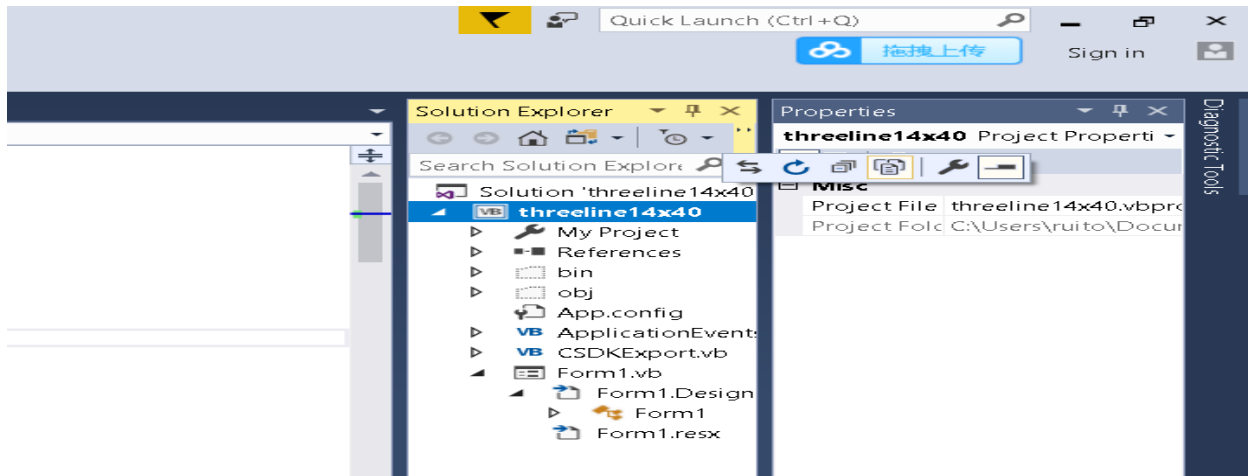
### Step 1-1:

Load two existing items to your project: **Events.vb** (in the USB), **CSDKExport.vb** (in the USB)



**Step 1-2: Copy file to debug folder: HSDK.dll**

**Step 1-3: Add “Imports System.Runtime.InteropServices” on top of Form1.designer.vb**



### Step 2-1:

Add on top of form.vb

```
Imports System
Imports System.Collections.Generic
Imports System.Text
Imports System.Runtime.InteropServices
```

### Step 2-2: Initiation of parameters, including the device IP address

```
Public Class Form1
    Dim m_nSendType As Integer
    Dim m_pSendParams As IntPtr
    Dim strParams As String
    Dim pNULL As IntPtr = 0
    Dim nCardType As Integer = 0
    Dim nFontColor As Integer = CSDKExport.Hd_GetColor(255, 0, 0)
    Dim pFontName As IntPtr = Marshal.StringToHGlobalUni("Arial")
    Dim pText As IntPtr

    Private Sub Form1_Load(sender As Object, e As EventArgs) Handles MyBase.Load
        InitializeSendParams()
    End Sub

    Sub InitializeSendParams()

        m_nSendType = 0
        strParams = "192.168.2.201" ' Device IP address
        m_pSendParams = Marshal.StringToHGlobalUni(strParams)
    End Sub
```

### Step 2-3: Send the message (for example of button click)

```
Private Sub SendButton_Click(sender As Object, e As EventArgs) Handles SendButton.Click

    pText = Marshal.StringToHGlobalUni(Line1.Text)
    CSDKExport.Hd_Rt_SendRealTimeText(m_nSendType, m_pSendParams, 0, 1, 1, 1, 0, 0,
96, 10, pText,
        nFontColor, 0, 4, pFontName, 10, 0, 10, 3, 0, 0, pNULL)
```

```
    pText = Marshal.StringToHGlobalUni(Line2.Text)
    CSDKExport.Hd_Rt_SendRealTimeText(m_nSendType, m_pSendParams, 1, 1, 1, 1, 0, 11,
96, 10, pText,
        nFontColor, 0, 4, pFontName, 10, 0, 10, 3, 0, 0, pNULL)

    pText = Marshal.StringToHGlobalUni(Line3.Text)
    CSDKExport.Hd_Rt_SendRealTimeText(m_nSendType, m_pSendParams, 2, 1, 1, 1, 0, 22,
96, 10, pText,
        nFontColor, 0, 4, pFontName, 10, 0, 10, 3, 0, 0, pNULL)

    Marshal.FreeHGlobal(pText)
```

End Sub

End Class

#### **Additional Function:**

##### **Check the device if online**

```
If CSDKExport.Cmd_IsCardOnline(m_nSendType, m_pSendParams, pNULL) = 0 Then
'check device online, 0: Online, -1: Offline
End If
```

**Notes: The sign is already set up, only needs to send Live messages.**