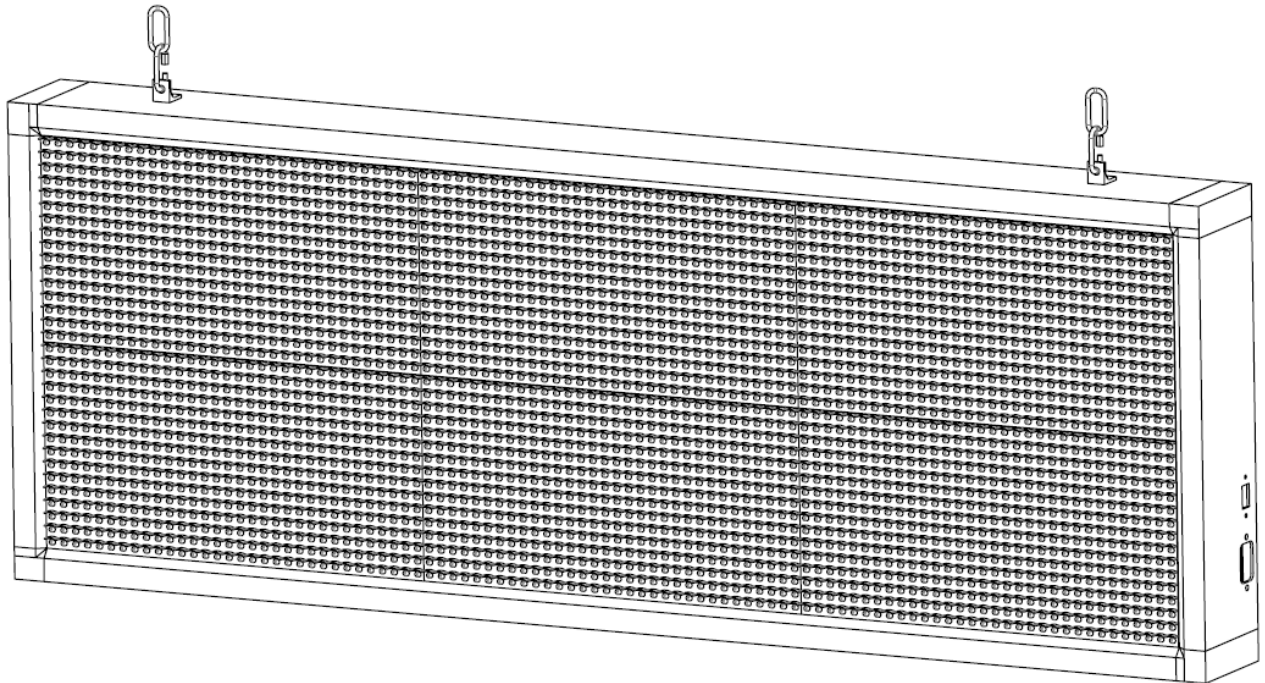


PRO-LED SIGN TECHNOLOGY INC.

www.ledsign4life.com



How to Design & Program a LED Sign
For Single-Color & Three-Color
HD2016 User Instruction

Files Overview

Files including:

1. HD2016.exe
2. Screen.hd6
3. Quick Install Guide.pdf
4. HD2016 User Instruction.pdf

If any of the above files are missing, please contact info@proledsigntech.com.

Minimum Requirements

Software Requirements:

- Windows 8 or higher
- USB 2.0 or higher

Main Functions

Section A. Hardware Settings:

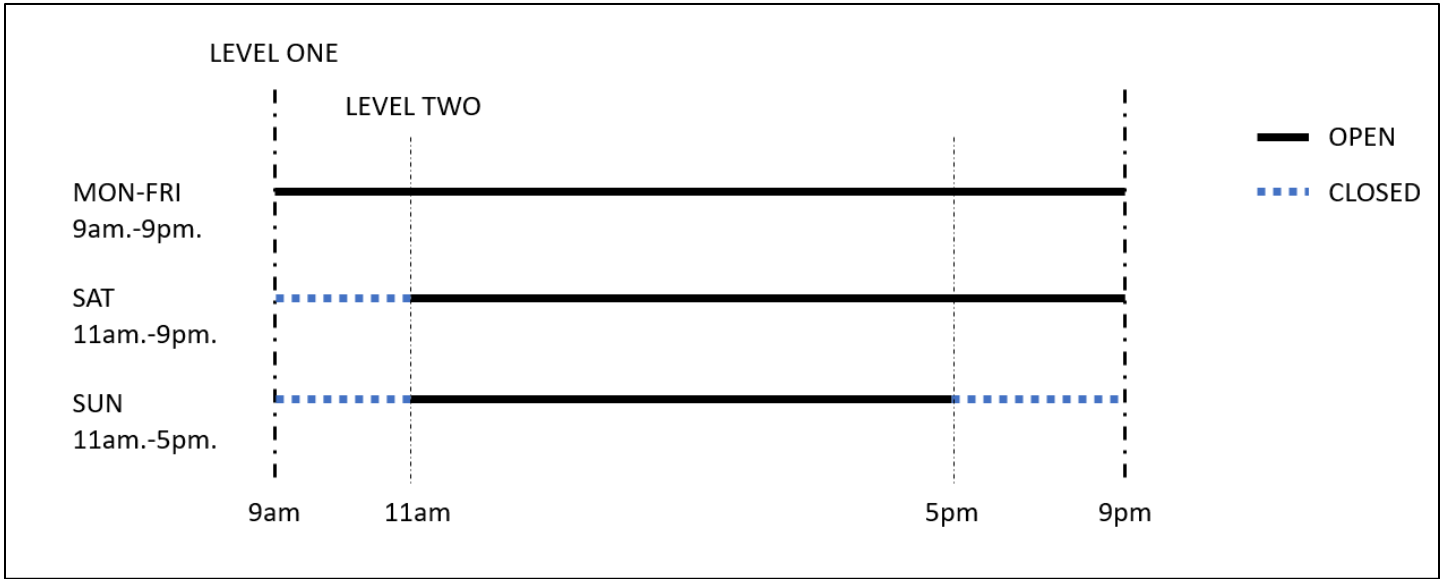
1	Timer Switch	Automatically turn on and off everyday
2	Brightness	Adjustable brightness

Section B. Contents Editing:

1	Divide the Screen	The screen can be divided into several sections
2	Add/Delete Programs	Programs will be played one by one
3	Add/Delete HyperText	Scrolling Message/Static Message/Display Effects
4	Add/Delete 3D Text	3D Scrolling Message/3D Moving Display

Some of the functions (such as “Text”, and “Animation”) are not introduced in this article since they can be perfectly replaced by other functions (by using “HyperText” or “3D Text”)

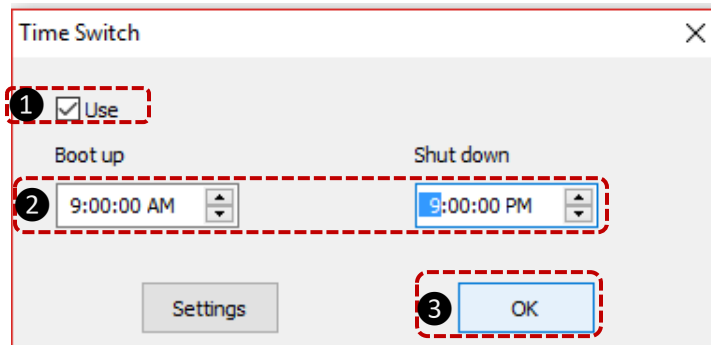
Section A-1. Timer Switch



Step 1. Level One Timer Switch

Click “Operation” – “Time Switch”

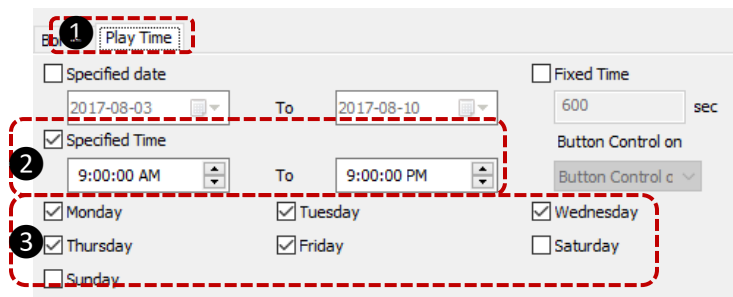
- 1 Select “Use”
- 2 Sample Boot-up Time: 9am.
Sample Shut-down Time: 9pm.
- 3 Click “OK”



Step 2. Setup Level Two Timer

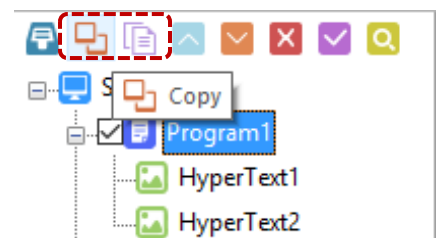
Click each “Program”

- 1 Choose “Play Time”
- 2 Select “Specified Time”
Set display time
- 3 Choose the display day from
Mon to Sun



Note:

Each program can set up one display time. If a message must be displayed in different time periods, please **copy & paste** to set more display periods.



Section A-2. Brightness Settings

1. Custom Settings:

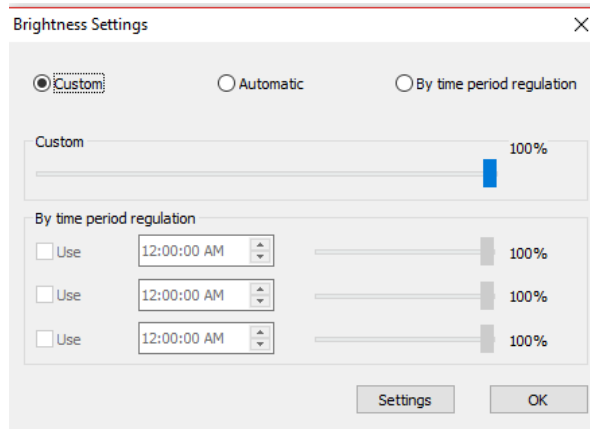
Adjustable Brightness: 2% - 100%

Default Setting: 100%

Recommend Settings:

Facing Outside: 75%-100%

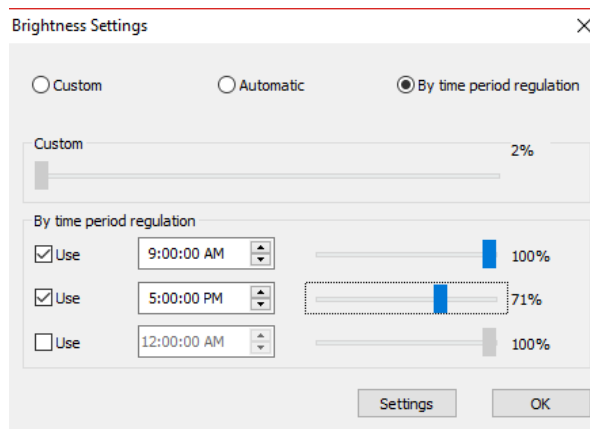
Facing Inside: 30%-50%



2. By time period regulation

Automatically adjust brightness at the certain time to the certain percentage.

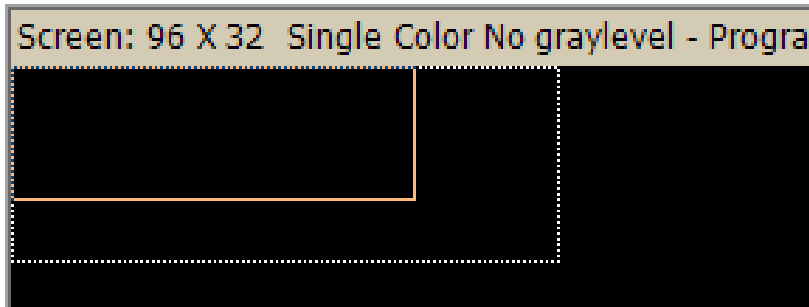
Maximum adjustable time: 3 times



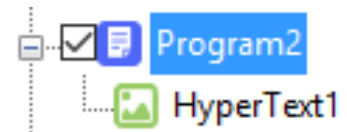
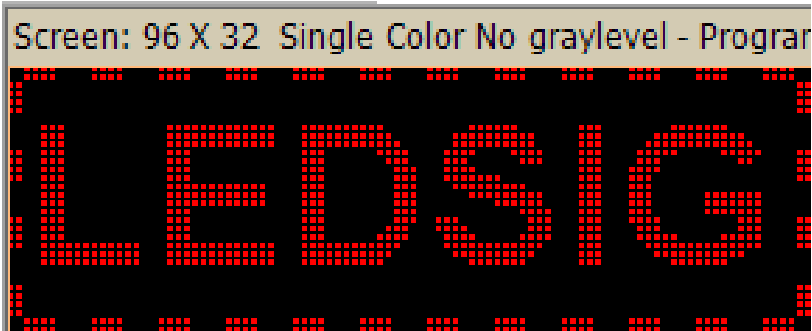
Section B-1. Divide the Screen

Under each Program, the screen can be divided into different sections:

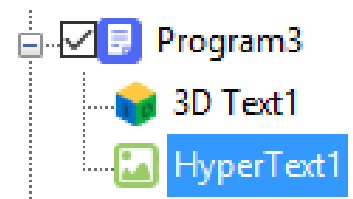
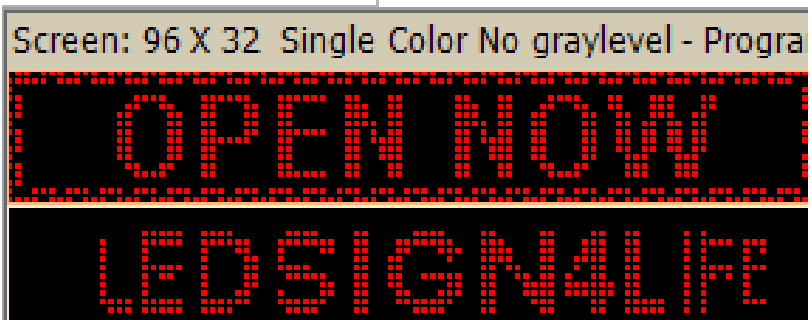
- Drag and adjust the windows



- Use as one section



- Use as several sections

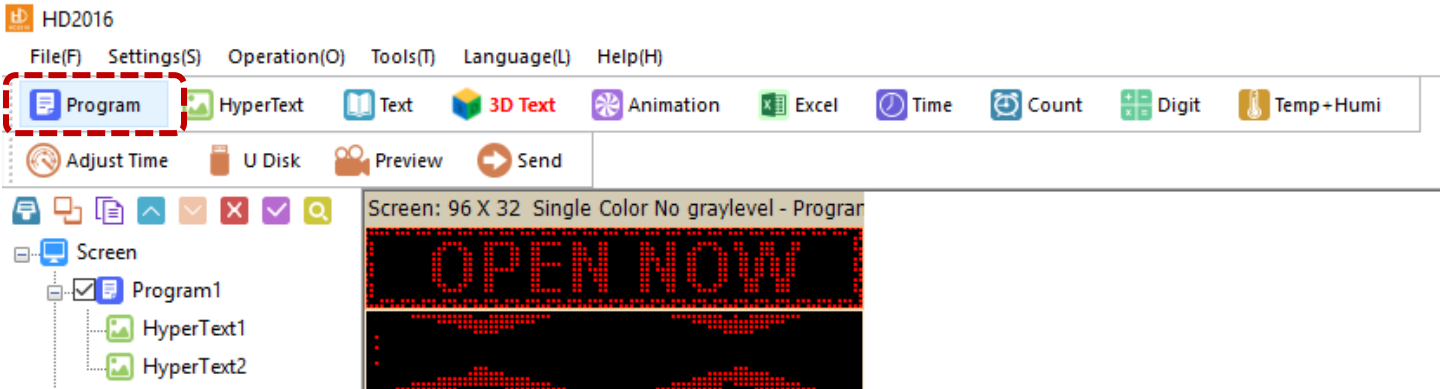


Note:

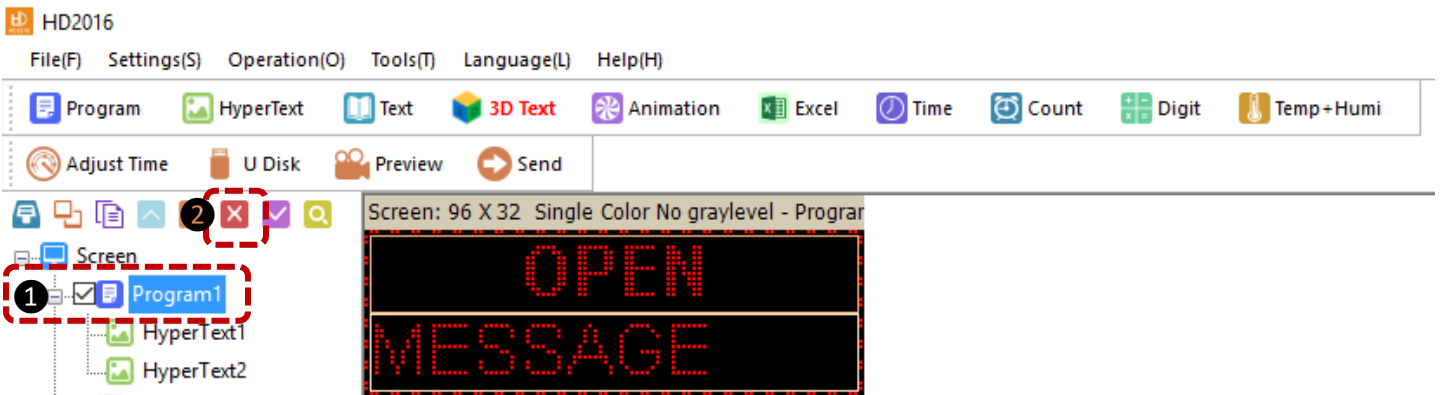
1. LED Sign will play from "Program1" to "Program..." one by one according to the timing settings.
2. Please avoid overlap of message windows
3. Example is two-line message sign (height of 14"). Size varies when purchase of a different size.
8" height LED Sign, recommended to be used as one-line message;
14" height LED Sign, recommended to be used as one-line or two-line messages;
21" height LED Sign, recommended to be used up to three message lines;
28" height LED Sign, recommended to be used up to four message lines;

Section B-2. Add/Delete Programs

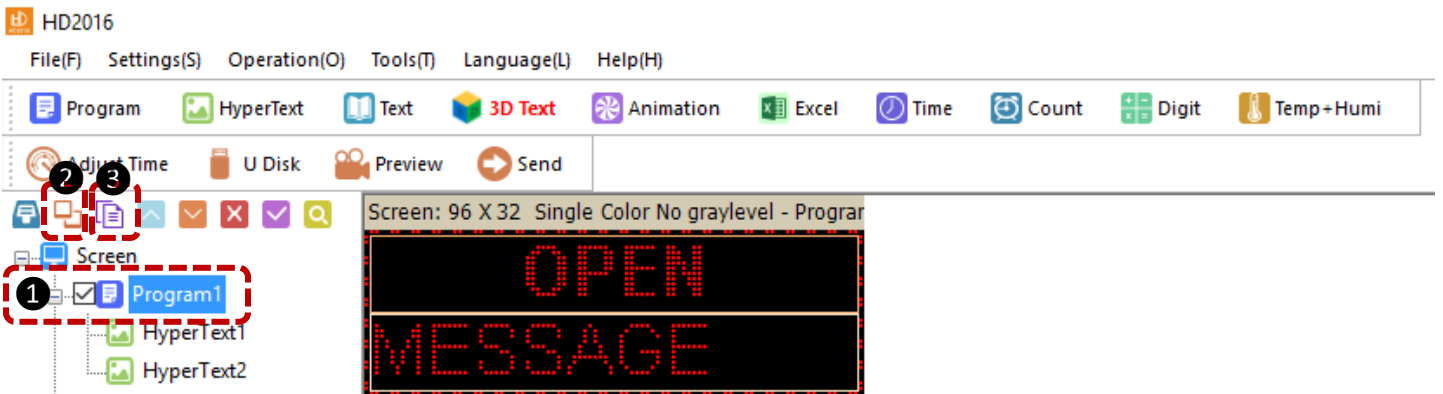
- Add a program



- Delete a program

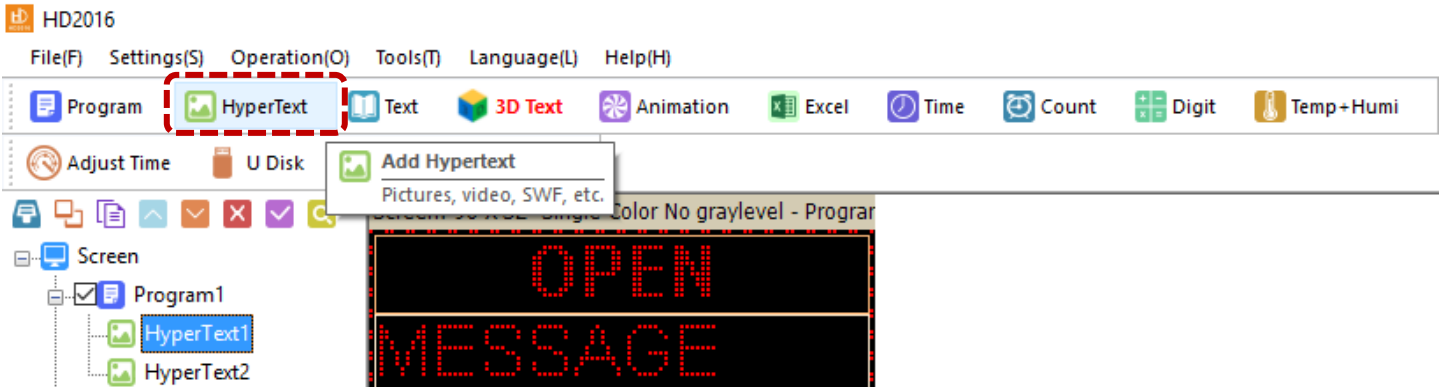


- Copy&Paste a program

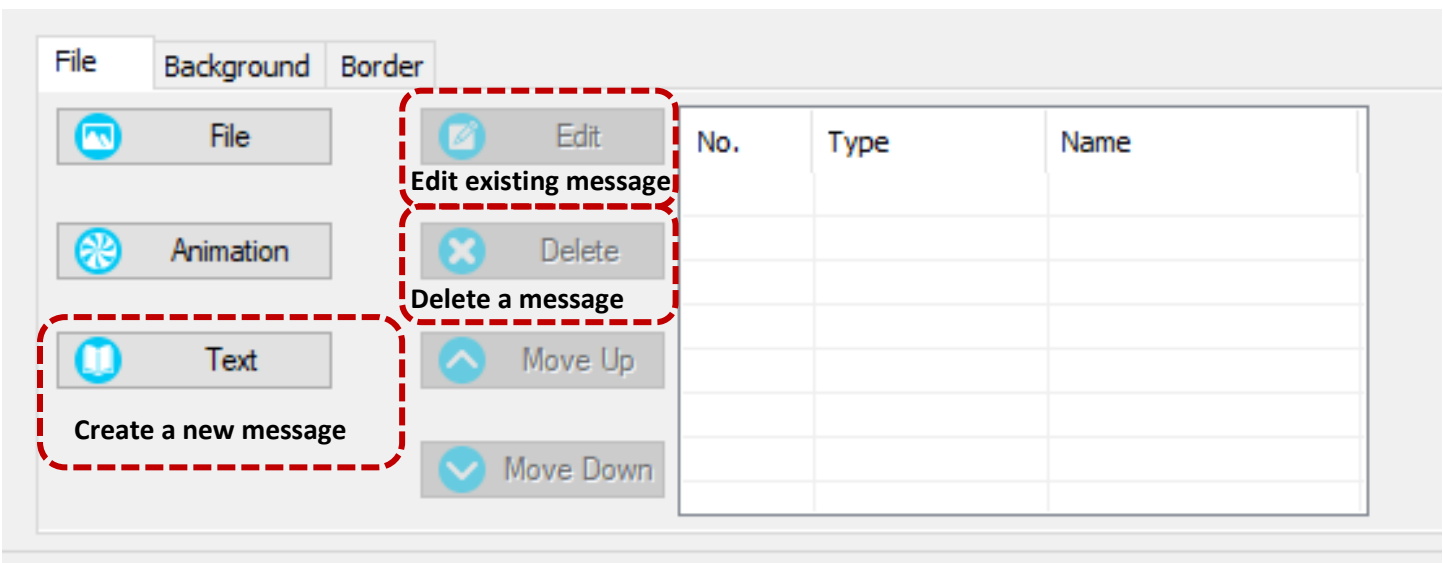


Section B-3. Add/Delete HyperText

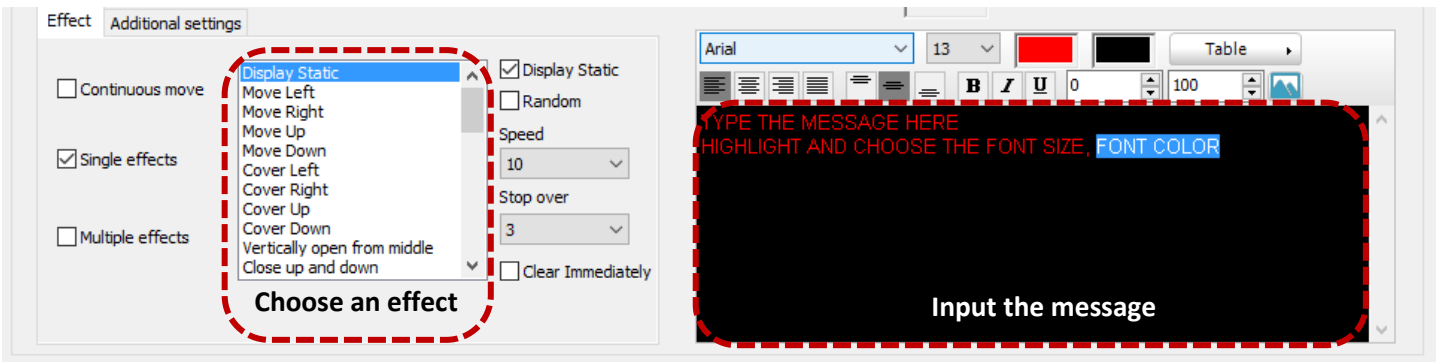
- Add a HyperText



- Delete a HyperText (same as “Delete a Program”)
- Create/edit/delete a message

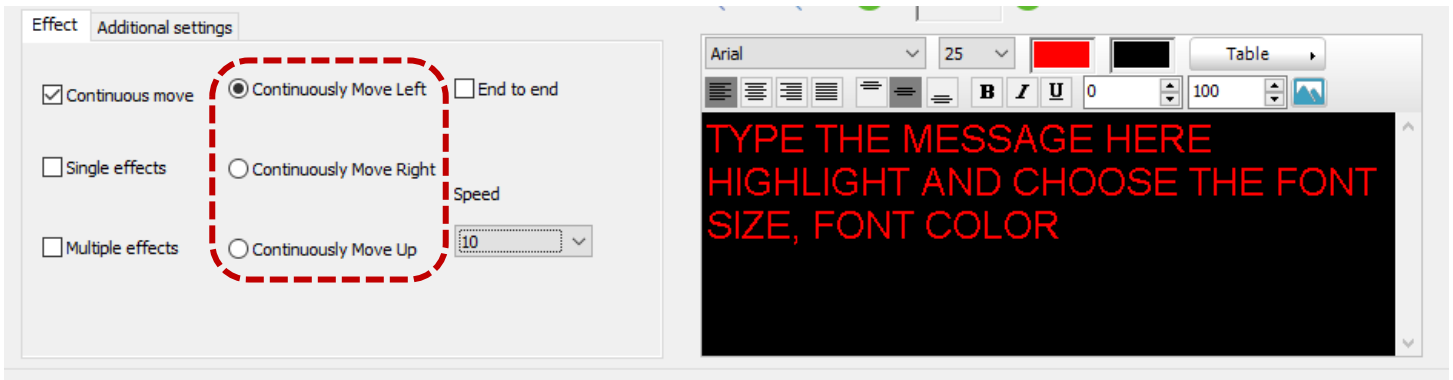


- Edit a Single Effect Message



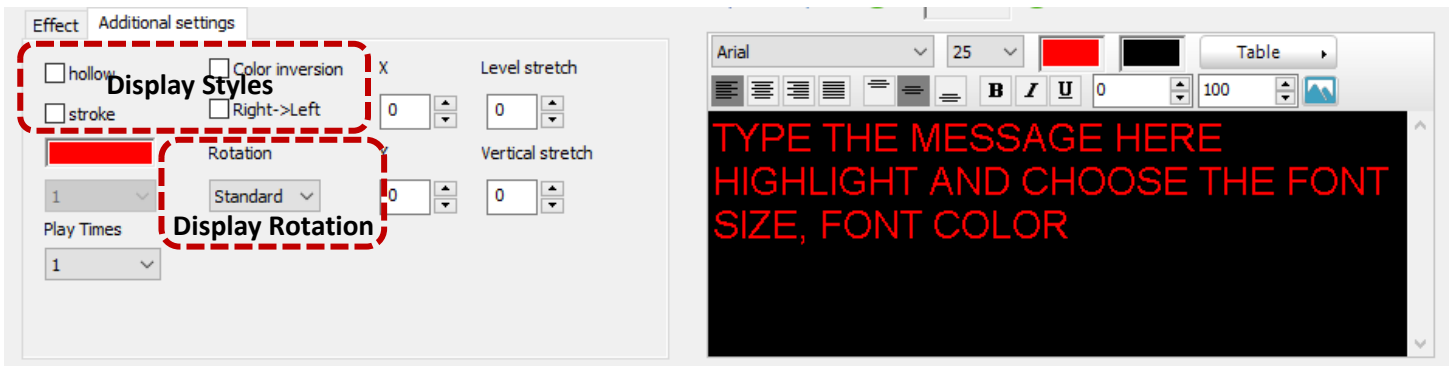
Note: Edit the message as same as Microsoft Word. Please highlight the words, then change the font and color.

- **Edit a Scrolling Message**



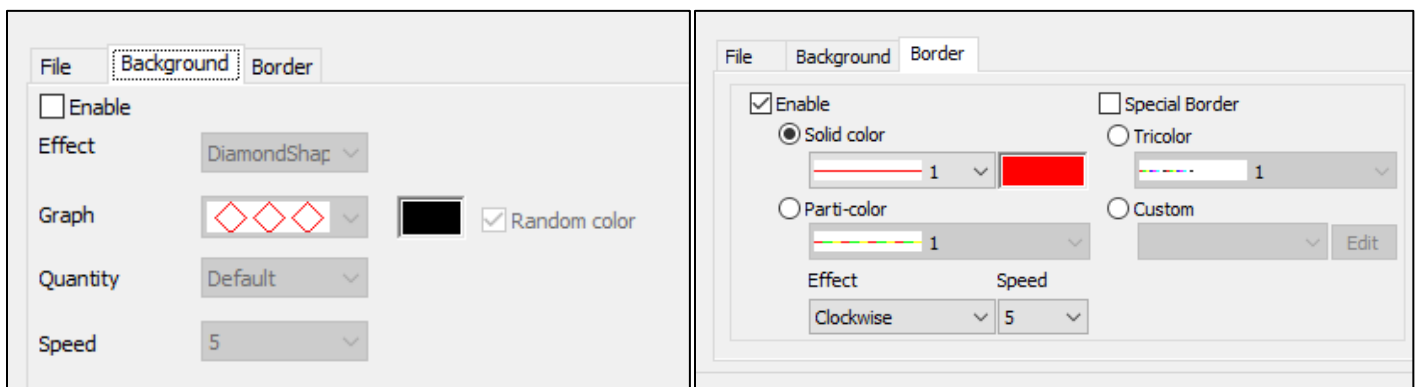
Note: Recommended **Scrolling Speed** from 10 to 20.

- **Additional Settings**



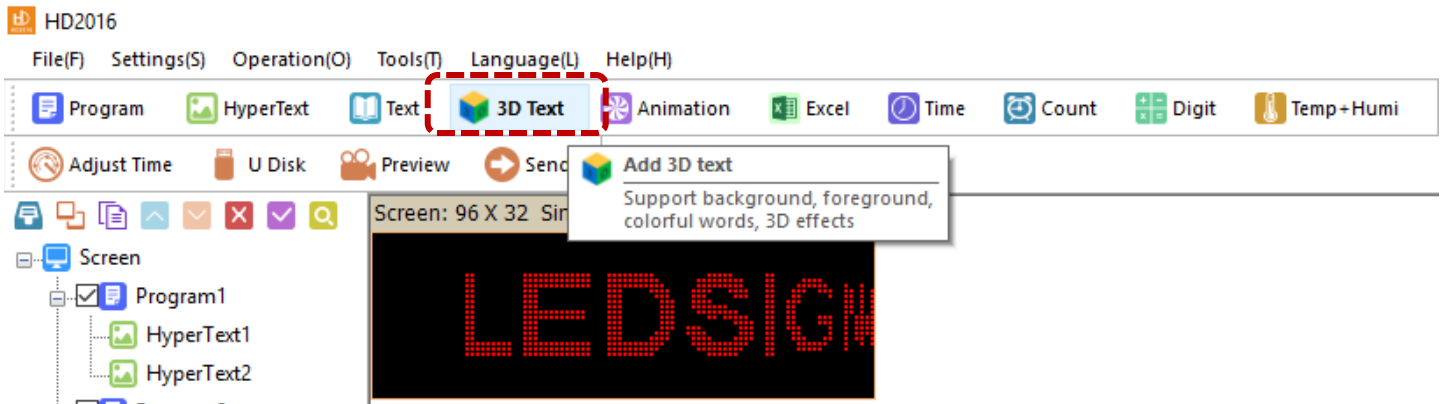
Note: Recommended **Play Times** 2 or 3

- **Edit the Background & Border (Under each HyperText or each Program)**

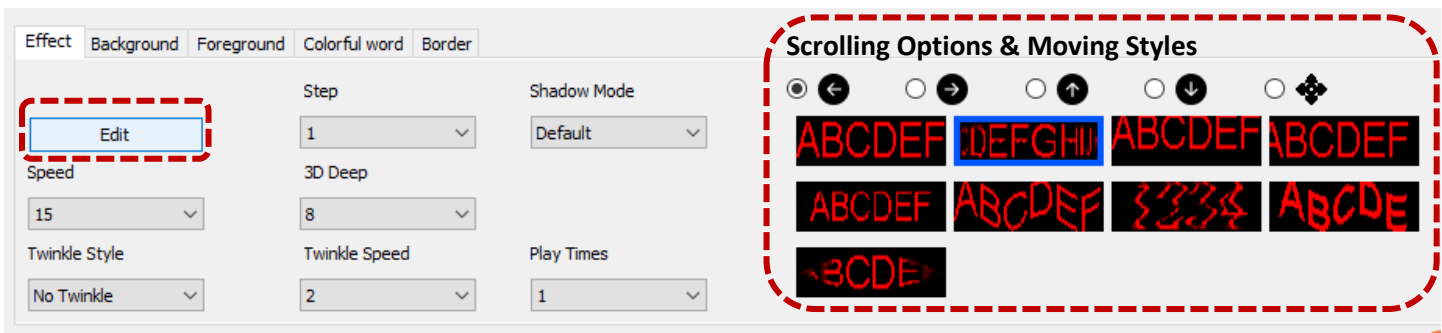


Section B-4. Add/Delete 3D Text

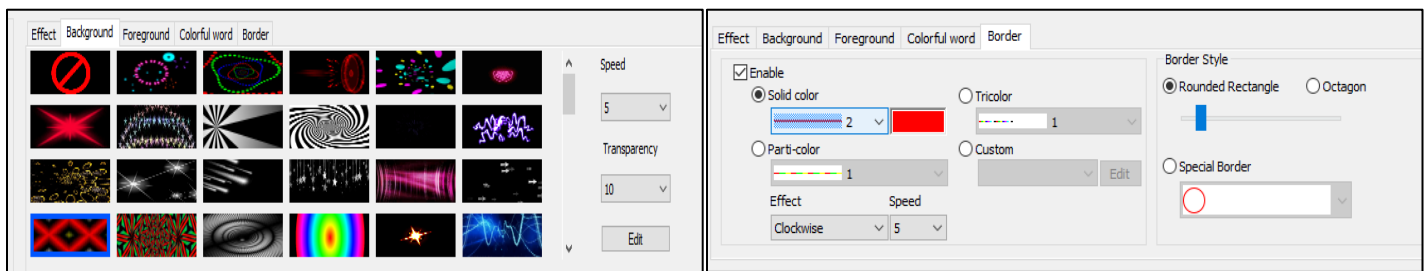
- Add a 3D Text



- Delete a 3D Text (same as “Delete a Program”)
- Edit the Message (same as “Edit a Scrolling Message”)



- Edit the Background & Border



How to save the code to the USB, please check “Quick Install Guide.pdf”

The END