

## WESTERN QUALITY WESTERN MADE



## The Prairie Comfort Plain

A popular ranch and stock feeders' saddle. Also used for pleasure riding. Especially mountain or hill country. Very popular with packers and hunters. Rawhide covered tree and heavy weight saddle skirting combine to make comfortable riding and long life.

- TREE:** Rawhide Covered — Swept Back Shaped Front  
**SEAT:** 15" Quilted  
**CANTLE:** Comfort Style with Cheyenne Roll  
**HORN:** Mexican Style Modified  
**RIGGING:** 3/4" Double Rig  
**SKIRTS:** 12" Wide 27" Long  
**FLANK CINCHA:** Single Ply Jerk & Flank  
**CINCHA:** 17 Strand  
**STIRRUP LEATHERS:** 2 1/2 AL RAY Buckles  
**FENDERS:** 8"x18" Chaped  
**STIRRUPS:** Leather Covered  
**WEIGHT:** Approx. 30 Pounds  
**FINISH:** Oiled and Polished

NO. 0-120 Each

**IN STOCK**



## The Prairie Comfort

Flower embossing makes this an attractive saddle to be used for show as well as for pleasure riding. A high quality hide covered tree combined with top selection saddle skirting combines to make an attractive comfortable long life saddle.

- TREE:** Rawhide Covered Swept Back Shaped Front  
**SEAT:** 15" Quilted  
**CANTLE:** Comfort Style with Cheyenne Roll  
**HORN:** Mexican Style Modified  
**RIGGING:** 3/4" Double Rig  
**SKIRTS:** 12" Wide, 27" Long  
**FLANK CINCHA:** Single Ply Jerks with Flank  
**CINCHA:** 17 Strand  
**STIRRUP LEATHERS:** 8"x18" Chaped  
**STIRRUPS:** Embossed Leather Covered  
**WEIGHT:** Approximately 30 Pounds  
**FINISH:** Oiled & Polished

NO 0-121 Each

**IN STOCK**

# SADDLES

## HIGH QUALITY SHOW SADDLES



Hand Tooled  
**Show Saddle**

### White Buck Stitched

- TREE:** 15" Quarter Horse, Rawhide Covered.  
**FRONT:** 14" Undercut and Shaped.  
**HORN:** 3½" Diameter Mex. Style or Two Rope Style — Specify Choice.  
**SEAT:** Quilted over Sponge Rubber.  
**CANTLE:** Comfort Style, 3½" high. Deep Dish-shaped with rope. Rolled Cheyenne Roll.  
**RIGGING:** Full Double or ¾ Double.  
**FENDERS:** New Shape — 8½" wide, 18½" long.  
**STIRRUP LEATHERS:** 3" wide, Blevins Buckles.  
**STIRRUPS:** Bell Bottom, Leather Covered, Buck Stitched.  
**SKIRTS:** 13" wide, 28½" long. Square with Rounded Corners.  
**LATIGOES AND OFF BILLET:** 2" Wide.  
**FLANK STRAP:** 3" with 1¾" rear Billets.  
**CINCH:** 17 Strand Mohair. Diamond Center with Dees.  
**FINISH:** Full hand tooled Florat Design. Antiqued. Buck Stitched.  
**WEIGHT:** 40 pounds.

No. 0-140 Each

IN STOCK



Hand Tooled  
**Show Saddle**

- TREE:** 15" Quarter Horse. Hide Covered.  
**FRONT:** 14" Undercut and Shaped.  
**HORN:** Mex. Style 3½" Diameter.  
**SEAT:** Quilted Foam Rubber.  
**CANTLE:** Comfort Style, 3½" high. Deep Dish Shaped Cheyenne Roll.  
**FENDERS:** 8½" wide, 18½" long. New Shape.  
**STIRRUP LEATHERS:** 3" wide, Blevins Buckles.  
**STIRRUPS:** Bell Bottom, Leather Covered.  
**SKIRTS:** 13" wide, 28½" long. Square with Rounded Corners.  
**BILLETS:** 1¾" wide.  
**FLANK STRAP:** 3" wide.  
**LATIGO TIE STRAP:** 1¾" wide.  
**CINCH:** 17 Strand Mohair.  
**FINISH:** Full Floral design. Oiled and Polished.  
**WEIGHT:** 40 pounds.

No. 0-139 Each

IN STOCK

# SADDLES

WESTERN QUALITY WESTERN MADE



## Corner Tooled Post Roper

**0-108**

No. 0-108. CORNER TOOLED POST ROPER. Quality flower tooling adds an attractive touch to this rugged saddle for dally ropers. Whether you ride out of the box or on the range, you'll have the secure comfort of a saddle designed to get the job done.

**TREE:** Association Roper.  
**SEAT:** 15½".  
**CANTLE:** 4" Cheyenne Roll.  
**HORN:** 3" Post Dally.  
**FORK:** 13".  
**RIGGING:** 7/8 Double S.S.  
**SKIRTS:** Square w/Wear Leather.  
**FLANK CINCHA:** 2½" Roper Double and Stitched Jerk.  
**CINCH:** Mohair.  
**STIRRUP LEATHER:** 3" w/Blevins Buckle.  
**FENDERS:** 8" x 18" Shaped.  
**STIRRUPS:** 3" Deep Ropers.  
**WEIGHT:** Approximately 40 pounds.  
**FINISH:** Dark Oiled.

**No. 0-108**

**IN STOCK**



## Plain Post Roper

**0-109**

No. 0-109 PLAIN POST ROPER. For those who prefer the plain look, this saddle will serve you well. It has all the basic requirements for rodeo or ranch...deep seat, undercut fork, post dally horn and quality materials and craftsmanship.

**TREE:** Association Roper.  
**SEAT:** 15½".  
**CANTLE:** 4" Cheyenne Roll.  
**HORN:** 3" Post Dally.  
**FORK:** 13".  
**RIGGING:** 7/8 Double S.S.  
**SKIRTS:** Square w/Wear Leather.  
**FLANK CINCH:** 2½" Roper w/Double and Stitched Jerks.  
**CINCH:** Mohair.  
**STIRRUP LEATHER:** 3" w/Blevins Buckles.  
**FENDERS:** 8" x 18" Shaped.  
**STIRRUPS:** 3" Deep Roper.  
**WEIGHT:** Approximately 40 pounds.  
**FINISH:** Dark Oiled.

**No. 0-109**

**IN STOCK**

# SADDLES

## SENSIBLE SADDLES AT SENSIBLE PRICES



### Bowman Roper

#### 0-20 "Bowman Roper"

Still one of the most popular roping saddles we sell. The square skirts let this saddle set right on the horse's back. The 4 inch Cantle adds to the secure feel of comfort, and the rawhide covered stirrups will take years of wear.

- TREE:** BOWMAN ROPER. Bull Hide Covered.
- SEAT:** 16" Padded.
- CANTLE:** 4½". Cheyenne Roll.
- FORK:** 13" with Rope Strap.
- HORN:** 3" Head, Two Rope, Rawhide Bound Wrapped.
- RIGGING:** 7/8 Double, SS Dees with Wear Leathers.
- SKIRTS:** Square, Wool Lined, Breast Collar Dees.
- FLANK CINCHA:** 3-64, 4" Tapered to 2¼. 1 Double and Stitched Jerk Latigoes.
- CINCHA:** 24 Strand Mohair.
- STIRRUP LEATHERS:** 3" with Bevins Buckles.
- FENDERS:** 8" x 18" Shaped Fenders.
- STIRRUPS:** No. 2-89, 3" Roper, Rawhide Covered.
- WEIGHT:** Approximately 38 pounds.
- FINISH:** Oiled and Polished.

No. 0-20

IN STOCK



### Contest Association

WITHOUT HORN

Approved association saddle. Tested and proved in accredited rodeos throughout the country. The strongest possible tree, the best leather and the finest craftsmanship go into this rugged saddle.

- TREE:** Bull Hide Covered.
- SEAT:** 16 Inch.
- CANTLE:** 4½" High, 1" Dish.
- FORK:** 14 Inch.
- HORN:** Without Horn (see inset).
- RIGGING:** 3/4.
- SKIRTS:** Round. Wool Lined.
- FLANK CINCHA:** All Leather. Jerk Latigoes 1¼" double and Stitched.
- CINCHA:** No. 751 Cotton Cord.
- LEATHERS:** 3" Double and Stitched.
- FENDERS:** Skirting.
- STIRRUPS:** Contest.
- WEIGHT:** Approximately 37 pounds.
- FINISH:** Rough Out.

No. 0-16 .....

Each

IN STOCK

# SADDLES

WESTERN QUALITY WESTERN MADE



## High Plains Wonder

This Little Wonder stays high on our list as a favorite all-around saddle. Particularly popular with ladies, but it is no sissy, itself. Tough enough for heavy day-in, day-out work. Light weight in heft but heavy weight in quality.

**TREE:** High Plains. Rawhide Covered.

**SEAT:** 14½" Inch. Quilted.

**CANTLE:** 2½" Cheyenne Roll.

**FORK:** 12½ Inch.

**HORN:** 2¼ Inch.

**RIGGING:** ¾ Double. Rig in Skirts.

**SKIRTS:** Round, Wool Lined, Breast Collar Dees.

**FLANK CINCHA:** 1¾" Skirting. 1¾" Jerk Latigoes.

**CINCHA:** 15 Strand Mohair.

**STIRRUP LEATHERS:** 3" with Blevins Buckles.

**FENDERS:** 8" x 18" Shaped Fenders.

**STIRRUPS:** 2" Visalia. Leather Covered.

**WEIGHT:** Approximately 30 pounds.

**FINISH:** Oiled and Polished.

No. 0-63                  Each  
**IN STOCK**



## "Equalized" Ride

Numerous features and innovations have been added to make this saddle unique. The equalized ride principle is based upon the theory that the rider achieves better balance when seated as far forward as possible. Seat has no build up in front. Stirrup leathers are set further ahead and many other special features are incorporated in the tree and rig to enable the rider to sit well forward.

**TREE:** Equalized Ride. Bull Hide Covered.

**SEAT:** 14½" Inch. Padded.

**CANTLE:** 2½ Inch.

**FORK:** 12" Low Style Undercut.

**HORN:** 2¼ Inch.

**RIGGING:** 7/8 Double Rig in Skirt.

**SKIRTS:** Round, Wool Lined. Breast Collar Dees.

**FLANK CINCHA:** 1¾" Skirting. 1¾" Jerk Latigoes.

**CINCHA:** 15 Strand Mohair.

**STIRRUP LEATHERS:** 3" Forwar Swing. Alray Buckles.

**FENDERS:** 8" x 18" Fenders.

**STIRRUPS:** 2" Visalia. Leather Covered.

**WEIGHT:** Approximately 30 pounds.

**FINISH:** Oiled and Polished.

No. 0-44                  Each  
**IN STOCK**

# SADDLES

WESTERN QUALITY WESTERN MADE



## Barrel Racer

### 0-99 "Barrel Racer"

When seconds count, this saddle will never hold you back. A deep seat, well positioned stirrups and 7/8 rigging in the skirt keep you close and balanced with plenty of leg freedom. Weight approximately 28 pounds.

**TREE:** LITTLE WONDER. Ralide  
**SEAT:** 15"  
**CANTLE:** 4" Cheyenne Roll.  
**FORK:** 12½"  
**HORN:** 2¼"  
**RIGGING:** Round, Wool Lined. Breast Collar Dees.  
**SKIRTS:** 7/8 Double. Rig in Skirt.  
**FLANK CINCHA:** 1¾" Skirting Jerk Latigo.  
**CINCHA:** 15 Strand Mohair.  
**STIRRUP LEATHERS:** 3" with Bevins Buckle.  
**FENDERS:** 8" x 18" Shapped Fenders.  
**STIRRUPS:** 1" Ox Bow, Rawhide Covered.  
**WEIGHT:** Approximately 28 pounds.  
**FINISH:** Oiled and Polished.

No. 0-99

**IN STOCK**



Light Weight

## Little Wonder

### 0-1 "Little Wonder"

Young horsemen and beginners will like this lightweight saddle. It's very popular with dude ranch operators. Here's a quality saddle at reasonable cost.

**TREE:** Little Wonder. Ralide.  
**SEAT:** 14½ Inch.  
**CANTLE:** 2¾" Cheyenne Foll.  
**FORK:** 12½ Inch.  
**HORN:** 2¼ Inch.  
**RIGGING:** ¾ Double. Rig in Skirts.  
**SKIRTS:** Round, Wool Lined, Breast Collar Dees.  
**FLANK CINCHA:** 1¾" Skirting Jerk Latigoes.  
**CINCHA:** 15 Strand Mohair.  
**STIRRUP LEATHERS:** 3" with Blevins Buckles.  
**FENDERS:** 8" x 18" Shaped Fenders.  
**STIRRUPS:** 2" Visialia, Leather Covered.  
**WEIGHT:** Approximately 33 pounds.  
**FINISH:** Oiled and Polished.

No. 0-1

Each

**IN STOCK**

# SADDLES

WESTERN QUALITY WESTERN MADE



## Colorado Fits Em

A sturdy easy-riding Fits Em with comfortable cushioned seat. Made on the popular, time-tested Low Fits Em tree. Always a favorite for general ranch work or just plain pleasure riding.

- TREE:** Low Fits Em. Bull Hide Covered.
- SEAT:** 15" Quilted.
- CANTLE:** 3" Komfort. Cheyenne Roll.
- FORK:** 13" Undercut. Rope Strap.
- HORN:** 3" Oval.
- RIGGING:** 7/8 Double Rig in Skirt.
- SKIRTS:** Round, Wool Lined. Breast Collar Dees.
- FLANK CINCHA:** 1 1/4" Skirting. Jerk Latigoes 1 1/4".
- CINCHA:** 17 Strand Mohair.
- STIRRUP LEATHERS:** 3" with Blevins Buckles.
- FENDERS:** 8" x 18" Shaped Fenders.
- STIRRUPS:** No. 2-90 3" Bell Bottom. Leather Covered.
- WEIGHT:** Approximately 35 pounds.
- FINISH:** Oiled and Polished.

No. 0-64                  Each  
**IN STOCK**



## Cattlemans Pride

The reliable "Fits Em". Ever popular with both stockmen and cutting horse enthusiasts. Top quality skirting leather. Solidly built. A sensible saddle at a sensible price.

- TREE:** Low Fits Em. Bull Hide Covered.
- SEAT:** 15 Inch.
- CANTLE:** 3" Komfort. Cheyenne Roll.
- FORK:** 13" Undercut. Rope Strap.
- HORN:** 3" Oval.
- RIGGING:** 7/8 Double Rig In Skirt.
- SKIRTS:** Round, Wool Lined. Breast Collar Dees.
- FLANK CINCHA:** 1 1/4" Skirting. Jerk Latigoes 1 1/4".
- CINCHA:** 17 Strand Mohair.
- STIRRUP LEATHERS:** 3" with Blevins Buckles.
- FENDERS:** 8" x 18" Shaped Fenders.
- STIRRUPS:** No. 2-90 3" Bell Bottom. Leather Covered.
- WEIGHT:** Approximately 33 pounds.
- FINISH:** Oiled and Polished.

No. 0-36                  Each  
**IN STOCK**

# SADDLES

WESTERN QUALITY WESTERN MADE



## Pride Of Denver

### 0-37 "Pride of Denver"

Ever since the '40's, this saddle has been popular for ranch and pleasure riding. The modified cutting horse tree offers a narrow comfortable seat with the necessary comfort cantle support for miles of riding.

**TREE:** In-Between Cutting Horse Modified, Rawhide Covered.

**SEAT:** 15"

**CANTLE:** 3½" Komfort Cheyenne Roll.

**FORK:** 14" with Rope Strap. Quilted.

**HORN:** 3½" Flat Top.

**RIGGING:** 7/8 Double Rig in Skirt.

**SKIRTS:** Round, Wool Lined, Breast Collar Dees.

**FLANK CINCHA:** No. 3-59. 2¼" Skirting. 1¾" Double and Stitched Jerk Latigoes.

**CINCHA:** 17 Strand.

**STIRRUP LEATHERS:** 3" with Blevirts Buckles.

**FENDERS:** 8" x 18" Shaped Fenders.

**STIRRUPS:** No. 2-90, 3" Bell Bottom. Leather Covered.

**WEIGHT:** Approximately 37 pounds.

**FINISH:** Oiled and Polished.

No. 0-37                  Each

**IN STOCK**



## The Trail Rider

### 0-97 "Trail Rider"

Good looks and a comfortable seat make this saddle attractive to the pleasure rider, but just in case you'll be roping some, we build it on a bullhide covered tree. It'll work for you when you need it and still keep you comfortable over the miles.

**TREE:** Low Bronc. Bull Hide Covered.

**SEAT:** 14½ Inch.

**CANTLE:** 3" Komfort.

**FORK:** 15" with Rope Strap.

**HORN:** 3 Inch.

**RIGGING:** ¾ Double.

**SKIRTS:** Round, Wool Lined, Breast Collar Dees.

**FLANK CINCHA:** 2¼" Skirting, Jerk Latigoes 1¾" Double and Stitched.

**CINCHA:** 17 Strand Mohair.

**STIRRUP LEATHERS:** 3" with Blevins Buckles.

**FENDERS:** 8" x 18" Shaped Fenders.

**STIRRUPS:** No. 2-90 3" Bell Bottom. Leather Covered.

**WEIGHT:** Approximately 35 pounds.

**FINISH:** Oiled and Polished.

No. 0-97                  Each

**IN STOCK**



# SADDLES

WESTERN QUALITY WESTERN MADE



## Stockmans High Cantle

### 0-3 "Stockman's High Cantle"

Riders who spend long hours in the saddle have made this another of our top sellers. The unique combination rigging adjusts from full double to ¾ double. This rugged-built saddle is made for rough work.

**TREE:** Association. Rawhide Covered.

**SEAT:** 15 Inch.

**CANTLE:** 4½ Inch.

**FORK:** 14" with Rope Strap.

**HORN:** 3½" Cap.

**RIGGING:** 7/8 Double Rig in Skirts. 3 Way Plate.

**SKIRTS:** Round, Wool Lined. Breast Collar Dees.

**FLANK CINCHA:** No. 3-59, 2¼" Skirting. 1¾" Double and Stitched Jerk Latigoes.

**CINCHA:** 17 Strand Mohair.

**STIRRUP LEATHERS:** 3" with Blevins Buckles.

**FENDERS:** 8" x 18" Shaped Fenders.

**STIRRUPS:** No. 2-90, 3" Bell Bottom. Leather Covered.

**WEIGHT:** Approximately 36 pounds.

**FINISH:** Oiled and Polished.

No. 0-3                      Each

IN STOCK



## Hill Country High Cantle

### 0-80 "Hill Country High Cantle"

Except for the 7/8 plate rigging, this is the same saddle design as the "Stockman's High Cantle." It's a twin for rugged performance.

**TREE:** Association. Rawhide Covered.

**SEAT:** 15 Inch.

**CANTLE:** 4½ Inch.

**FORK:** 14" with Rope Strap.

**HORN:** 3½" Cap.

**RIGGING:** 7/8 Double Rig Powder River Plate.

**SKIRTS:** Round, Wool Lined. Breast Collar Dees.

**FLANK CINCHA:** No. 3-59, 2¼" Skirting. 1¾" Double and Stitched Jerk Latigoes.

**CINCHA:** 17 Strand Mohair.

**STIRRUP LEATHERS:** 3" with Blevins Buckles.

**FENDERS:** 8" x 18" Shaped Fenders.

**STIRRUPS:** No. 2-90, 3" Bell Bottom. Leather Covered.

**WEIGHT:** Approximately 36 pounds.

**FINISH:** Oiled and Polished.

No. 0-80                      Each

IN STOCK

# SADDLES

## OLD MEXICO



**Larado**  
0-154 Plain

**LARADO SADDLES ARE MANUFACTURED SOUTH OF THE BORDER**

The quality is not on a par with Colorado Saddlery saddles but are a good item for the money invested. They are manufactured to our specifications.

- TREE:** Calente Roper. Rawhide Covered.
- SEAT:** 15" Padded.
- CANTLE:** 3" Cheyenne Roll.
- FORK:** 13"
- HORN:** 3 1/4" Head.
- RIGGING:** Full double dee rig.
- SKIRTS:** Square 26" x 16" Lined.
- FLANK CINCHA:** 3" Double and Stitched. 1 1/2" Single ply jerks.
- CINCHA:** Mohair.
- STIRRUP LEATHERS:** 3" with adjustable buckles.
- FENDERS:** 8" x 18" shaped.
- STIRRUPS:** 3" Roper. Leather covered.
- WEIGHT:** Approximately 35 pounds.
- FINISH:** Oiled.

- No. 0-154 Plain .....
- No. 0-155 Basket .....

**IN STOCK**

## WESTERN QUALITY WESTERN MADE



**Ellensburg Post Roper**  
0-110

ELLENSBURG POST ROPER. If you're a dally roper, this saddle will help you get the job done. The post horn sets up where you want it, and the undercut fork and high cantle will keep you in position. It's a tough-built saddle for tough ropin'.

- TREE:** Ellensburg.
- SEAT:** 16".
- CANTLE:** 4".
- FORK:** 14".
- HORN:** 3" Post Dally.
- RIGGING:** 7/8 Double w/S.S. Dee.
- SKIRTS:** Square w/Wear Leather.
- FLANK CINCH:** 2 1/2" Ropers w/Double and Stitched Jerk.
- CINCH:** Mohair.
- STIRRUP LEATHER:** 3" w/Blevins Buckles.
- FENDERS:** 8" x 18" Shaped.
- STIRRUP:** 3" Deep Roper.
- WEIGHT:** Approximately 40 pounds.
- FINISH:** Dark Oiled.

**No. 0-110 IN STOCK**



## **PRODUCTION SADDLES**

The following pages feature the many styles of saddles we produce in multiple quantities as orders are received. Many styles are currently in stock. These saddles are available only as specified. Any changes must be handled as a custom-designed saddle. Our production saddles offer the same quality as the custom design at a savings made possible by quantity production.

# SADDLES

WESTERN QUALITY WESTERN MADE



## High Plains Roper RALIDE TREE

### 0-5 "High Plains Roper"

This general ranch work saddle is a good performer as a basic working saddle for light roping. The tree is Ralide in the popular Sheppard style.

- TREE:** SHEPPARD ROPER. Ralide.
- SEAT:** 15½" Quilted.
- CANTLE:** 3" Cheyenne Roll.
- FORK:** 13" with Rope Strap.
- HORN:** 3" Head, Two Rope, Rawhide Bound. Wrapped.
- RIGGING:** 7/8 Double Rig S.S. Dee
- SKIRTS:** Square. Wool Lined with Breast Collar Dees.
- FLANK CINCHA:** No. 3-64, 4" Tapered to 2¼. 1¼" Double and Stitched Jerk Latigoes.
- CINCHA:** 24 Strand Mohair.
- STIRRUP LEATHERS:** 3" with Blevins Buckles.
- FENDERS:** 8" x 18" Shaped Fenders.
- STIRRUPS:** No. 2-91, 3" Roper Leather Covered.
- WEIGHT:** Approximately 36 pounds.
- FINISH:** Oiled and Polished.

No. 0-5      Each  
IN STOCK



## Corner Tooled Roper

### 0-17 "Corner Tooled Roper"

Whether you take your dally team roping or on the range, this rugged saddle will keep you horseback. The corner-tooling adds a distinctive feature to this quality, custom design.

- TREE:** SHEPPARD ROPER. Bull Hide Covered.
- SEAT:** 15½" Narrow Padded.
- CANTLE:** 3" Cheyenne Roll. Deep Dish.
- FORK:** 13" with Rope Strap.
- HORN:** 3" Head. Two Rope. Rawhide Bound. Wrapped.
- RIGGING:** 7/8" Double. S.S. Dees. With wear Leathers.
- SKIRTS:** Square. Wool Lined with Breast Collar Dees.
- FLANK CINCHA:** No. 3-64, 4" Tapered to 2¼. 1¼" Double and Stitched Jerk Latigoes.
- CINCHA:** 24 Strand Mohair.
- STIRRUP LEATHERS:** 3" with Blevins Buckles.
- FENDERS:** 8" x 18" Shaped Fenders.
- STIRRUPS:** No. 2-91, 3" Roper Leather Covered.
- WEIGHT:** Approximately 38 Pounds.
- FINISH:** Oiled and Polished.

No. 0-17      Each

IN STOCK

# SADDLES

WESTERN QUALITY WESTERN MADE



## Sheppard Roper

### 0-77 "Sheppard Roper"

Cowboy work is rough and rugged, and this saddle is built to take it. The Chuck Sheppard tree is Bullhide covered, and the rawhide bound horn is latigo wrapped. The top skirting leather has a medium oil finish.

**TREE:** SHEPPARD ROPER. Bull Hide Covered.

**SEAT:** 15½" Quilted.

**CANTLE:** 3" Cheyenne Roll.

**FORK:** 13" with Rope Strap.

**HORN:** 3" Head, Two Rope, Rawhide Bound, Wrapped.

**RIGGING:** 7/8 Double Rig S.S. Dee

**SKIRTS:** Square, Wool Lined with Breast Collar Dees.

**FLANK CINCHA:** No. 3-64, 4" Tapered to 2¼. 1¼" Double and Stitched Jerk Latigoes.

**CINCHA:** 24 Strand Mohair.

**STIRRUP** 3" with Blevins Buckles.

**STIRRUP LEATHERS:** 8" x 18" Shaped Fenders.

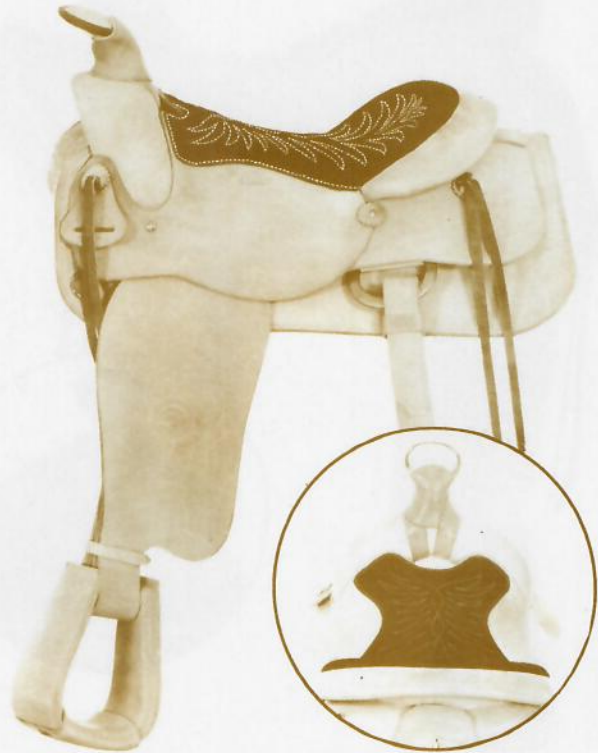
**FENDERS:** No. 2-91, 3" Roper Leather Covered.

**WEIGHT:** Approximately 38 pounds.

**FINISH:** Oiled and Polished.

No. 0-77 Each

**IN STOCK**



## Sheppard Roper

### 0-78 "Sheppard Roper"

Tough-built for tough work. The top grain rough-out skirting leather covers a Chuck Sheppard Bullhide covered tree. The rough-out padded seat adds comfort, wear and security.

**TREE:** SHEPPARD ROPER. Bull Hide Covered.

**SEAT:** 15½" Quilted.

**CANTLE:** 3" Cheyenne Roll.

**FORK:** 13" with Rope Strap.

**HORN:** 3" Head, Two Rope, Rawhide Bound, Wrapped.

**RIGGING:** 7/8 Double Rig S.S. Dee

**SKIRTS:** Square, Wool Lined with Breast Collar Dees.

**FLANK CINCHA:** No. 3-64, 4" Tapered to 2¼. 1¼" Double and Stitched Jerk Latigoes.

**CINCHA:** 24 Strand MoHair.

**STIRRUP LEATHERS:** 3" with Blevins Buckles.

**FENDERS:** 8" x 18" Shaped Fenders.

**STIRRUPS:** No. 2-91, 3" Roper Leather Covered.

**WEIGHT:** Approximately 38 pounds.

**FINISH:** Rough out.

No. 0-78 Each

**IN STOCK**

# SADDLES

## WESTERN QUALITY WESTERN MADE



### Sierra Rancher

Simplicity stands out in our good looking Sierra Rancher. A dependable every day saddle for heavy work. Comfortable Bowman seat, well proportioned, sleek lines, plain finish. Heavy roping tree. Choice leather.

- TREE:** BOWMAN ROPER. Bull Hide Covered.
- SEAT:** 15½"
- CANTLE:** 2½". Komfort. Cheyenne Roll.
- FORK:** 13" with Rope Strap.
- HORN:** 3½" FLAT TOP
- RIGGING:** 7/8 Double Rig in skirt.
- SKIRTS:** Round. Wool Lined. Breast Collar Dees.
- FLANK CINCHA:** No. 3-59, 2¼" Skirting. 1¼" Heavy Skirting. Jerk Latigoes.
- CINCHA:** 17 Strand Mohair.
- STIRRUP LEATHERS:** 3" with Blevins Buckles.
- FENDERS:** 8 x 18" Shaped Fenders.
- STIRRUPS:** No. 2-90, 3" Bell Bottom Leather Covered.
- WEIGHT:** Approximately 36 pounds.
- FINISH:** Oiled and Polished.

No. 0-40                      Each  
**IN STOCK**



### Sheppard Roper

#### 0-72 "Sheppard Roper"

The good looks of hand tooling and the security of a rough-out seat add to the built-in ruggedness of this all-around saddle.

- TREE:** SHEPPARD ROPER. Bull Hide Covered.
- SEAT:** 15½" Quilted.
- CANTLE:** 3" Cheyenne Roll.
- FORK:** 13" with Rope Strap.
- HORN:** 3" Head. Two Rope. Rawhide Bound. Wrapped.
- RIGGING:** 7/8 Double Rig S.S. Dee
- SKIRTS:** Square. Wool Lined with Breast Collar Dees.
- FLANK CINCHA:** No. 3-64, 4" Tapered to 2¼. 1¼" Double and Stitched Jerk Latigoes.
- CINCHA:** 24 Strand Mohair.
- STIRRUP LEATHERS:** 3" with Blevins Buckles.
- FENDERS:** 8" x 18" Shaped Fenders.
- STIRRUPS:** No. 2-91, 3" Roper Leather Covered.
- WEIGHT:** Approximately 38 pounds.
- FINISH:** Oiled and Polished.

No. 0-72                      Each  
**IN STOCK**

# SADDLES

WESTERN QUALITY WESTERN MADE



**The Big Valley  
Roper**  
RALIDE TREE

## 0-11 "Big Valley Roper"

If you need a general ranch saddle for miles of riding and only light roping, this is a good choice. The popular Sheppard Ralide tree is built into a square-skirted design with 7/8 stainless steel double rigging.

**TREE:** SHEPPARD ROPER. Ralide.

**SEAT:** 15½" without Quilted Seat.

**CANTLE:** 3" Cheyenne Roll.

**FORK:** 13" with Rope Strap.

**HORN:** 3" Head, Two Rope, Rawhide Bound, Wrapped.

**RIGGING:** 7/8 Double Rig S.S. Dee

**SKIRTS:** Square, Wool Lined with Breast Collar Dees.

**FLANK CINCHA:** No. 3-64, 4" Tapered to 2¼. 1¼" Double and Stitched Jerk Latigoes.

**CINCHA:** 24 Strand MoHair.

**STIRRUP LEATHERS:** 3" with Blevins Buckles.

**FENDERS:** 8" x 18" Shaped Fenders.

**STIRRUPS:** No. 2-91, 3" Roper Leather Covered.

**WEIGHT:** Approximately 38 pounds.

**FINISH:** Oiled and Polished.

No. 0-11

Each

**IN STOCK**



**The Eldorado  
Roper**

## 0-149 "El Dorado Roper"

Ranch cowboys and team ropers will like this sturdy roping saddle with a Post Dally Horn and Bullhide covered Sheppard tree.

**TREE:** Chuck Speppard with Dally Horn

**SEAT:** 15½" Quilted

**CANTLE:** 3" Cheyenne Roll

**FORK:** 13" with Rope Strap

**HORN:** 4" Post Horn

**RIGGING:** 7/8 Double Rig S.S. Dee

**SKIRTS:** Square Wool Lined with Breast Collar Dee

**FLANK CINCHA:** 3-59 Flank. Double and Stitched Jerk

**CINCHA:** 17 Strand Mohair

**STIRRUP LEATHERS:** 3" Blevins Buckets

**FENDERS:** 8"x18" Shaped Fenders

**STIRRUPS:** 3" Roper Stirrup Leather Covered

**WEIGHT:** Approximately 36 lbs.

**FINISH:** Oiled & Polished

**NQ. 0-149 Each**

**IN STOCK**

# SADDLES

WESTERN QUALITY WESTERN MADE



## New Team Roper

### 0-55 "New Team Roper"

Our team roping customers wanted a saddle with a higher cantle and a more under-cut fork, so here it is.

**TREE:** ASSOCIATION. Rawhide Covered.  
**SEAT:** 16"  
**CANTLE:** 3½"  
**FORK:** 14"  
**HORN:** 2" Cap with 3½ Dally Horn.  
**RIGGING:** 7/8 Double SS Dees.  
**FLANK CINCHA:** No. 3-64, 4" Tapered to 2¼", 1¾ Double and Stitched Jerk Latigos.  
**CINCHA:** 24 Strand Mohair.  
**STIRRUP LEATHERS:** 3" with Bevins Buckles.  
**FENDERS:** 8" x 18" Shaped Fenders.  
**STIRRUPS:** No. 2-89, 3" Roper Rawhide Covered.  
**WEIGHT:** Approximately 38 pounds.  
**FINISH:** Oiled and Polished.

No. 0-55

IN STOCK



## New Team Roper

### 0-61 "New Team Roper"

This is the same new design in a more "Dressed-up" finish featuring an attractive Diamond Vine Stamping.

**TREE:** ASSOCIATION. Rawhide Covered.  
**SEAT:** 16"  
**CANTLE:** 3½"  
**FORK:** 14"  
**HORN:** 2" Cap with 3½" Dally Horn.  
**RIGGING:** 7/8 Double SS Dees.  
**FLANK CINCHA:** No. 3-64, 4" Tapered to 2¼", 1¾ Double and Stitched Jerk Latigos.  
**CINCHA:** 24 Strand Mohair.  
**STIRRUP LEATHERS:** 3" with Bevins Buckles.  
**FENDERS:** 8" x 18" Shaped Fenders.  
**STIRRUPS:** No. 2-89, 3" Roper Rawhide Covered.  
**WEIGHT:** Approximately 38 pounds.  
**FINISH:** Oiled and Polished.

No. 0-61

IN STOCK



# SADDLES

WESTERN QUALITY WESTERN MADE



**Pride Of Denver**  
WITH QUILTED SEAT

We challenge anyone to produce a better saddle at this price. Careful planning has gone into this excellent In-Between to make it a leader in our line of fine saddles. Definitely in the upper class in design, craftsmanship and materials. The higher cantle and wider fork give proper support for all-day riding.

- TREE:** In-Between Cutting Horse Modified. Rawhide Covered.  
**SEAT:** 15" Quilted.  
**CANTLE:** 3½" Komfort Cheyenne Roll.  
**FORK:** 14" with Rope Strap. Quilted.  
**HORN:** 3½" Flat Top.  
**RIGGING:** 7/8 Double Rig in Skirt.  
**SKIRTS:** Round, Wool Lined. Breast Collar Dees.  
**FLANK CINCHA:** No. 3-59. 2¼" Skirting. 1¼" Double and Stitched Jerk Latigoes.  
**CINCHA:** 17 Strand.  
**STIRRUP LEATHERS:** 3" with Blevins Buckles.  
**FENDERS:** 8" x 18" Shaped Fenders.  
**STIRRUPS:** No. 2-90, 3" Bell Bottom. Leather Covered.  
**WEIGHT:** Approximately 37 pounds.  
**FINISH:** Oiled and Polished.

No. 0-8      Each  
IN STOCK



**Improved Ellensburg**

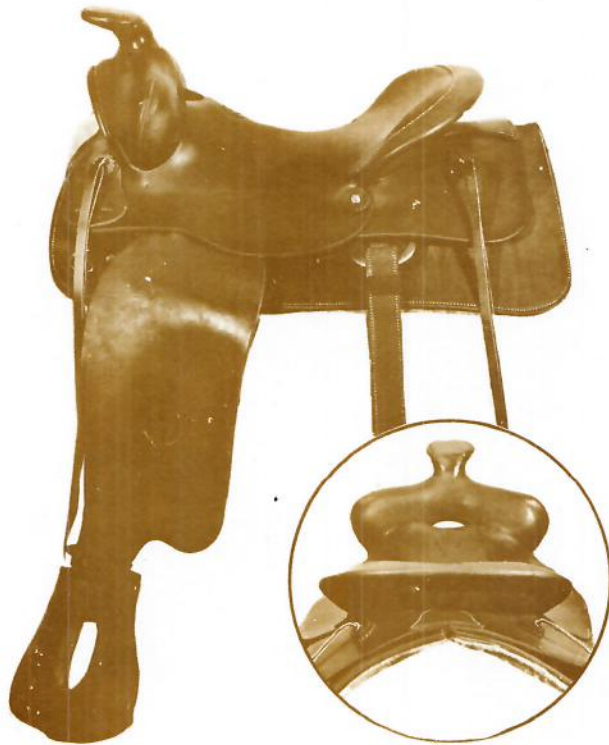
It would be difficult to improve the quality and appearance of this splendid Ellensburg. It looks like twice the price. Sturdily built, beautifully hand carved. An excellent saddle made to satisfy the most exacting demands.

- TREE:** Ellensburg. Bull Hide Covered.  
**SEAT:** 15" inch.  
**CANTLE:** 3". Cheyenne Roll.  
**FORK:** 14½" with Rope Strap.  
**HORN:** 3 inch.  
**RIGGING:** ¾ Double.  
**SKIRTS:** Square, Wool Lined. Breast Collar Dees.  
**FLANK CINCHA:** No. 3-59, 2¼" Skirting. 1¼" Heavy Skirting. Jerk Latigoes.  
**CINCHA:** 17 Strand Mohair.  
**STIRRUP LEATHERS:** 3" with Blevins Buckles  
**FENDERS:** 8 x 18" Shaped Fenders.  
**STIRRUPS:** No. 2-90, 3" Bell Bottom Leather Covered.  
**WEIGHT:** Approximately 36 pounds.  
**FINISH:** Oiled and Polished.

No. 0-7      Each  
IN STOCK

# SADDLES

WESTERN QUALITY WESTERN MADE



## Great Basin

We challenge anyone to produce a better saddle at this price. Careful planning has gone into this excellent In-Between to make it a leader in our line of fine saddles. Definitely in the upper class in design, craftsmanship and materials. The higher cantle and wider fork give proper support for all-day riding.

- TREE:** In-Between Cutting Horse Modified. Rawhide Covered.  
**SEAT:** 15"  
**CANTLE:** 3½" Komfort Cheyenne Roll.  
**FORK:** 14" with Rope Strap. Quilted.  
**HORN:** 3½" Flat Top.  
**RIGGING:** 7/8 Double Rig S.S. Dee  
**SKIRTS:** Square, Wool Lined. Breast Collar Dees.  
**FLANK CINCHA:** No. 3-59. 2¼" Skirting. 1¼" Double and Stitched Jerk Latigoes.  
**CINCHA:** 17 Strand Mohair.  
**STIRRUP LEATHERS:** 3" with Blevins Buckles.  
**FENDERS:** 8" x 18" Shaped Fenders.  
**STIRRUPS:** No. 2-90, 3" Bell Bottom. Leather Covered.  
**WEIGHT:** Approximately 37 pounds.  
**FINISH:** Oiled and Polished.

No. 0-13      Each

IN STOCK



Year after year this saddle remains near the top in popularity. A proven number among cutting horse people who know high quality. A custom saddle to meet any specifications. Made from choicest skirting leather and by old time saddle makers. This is the kind of saddle grandfather claims he used to ride.

- TREE:** Association Rawhide Covered  
**SEAT:** 16"  
**CANTLE:** 4½ Inch  
**FORK:** 14" with rope strap  
**HORN:** 3½" High with Cap  
**RIGGING:** 7/8 Double Rig S.S. Dee  
**SKIRTS:** Round. Wool Lined with Breast Collar Dees  
**FLANK CINCHA:** No. 3-59 2½ Skirting 1¼ Double & Stitched Jerk  
**CINCHA:** 17 Strand Mohair  
**STIRRUP LEATHERS:** 3" Blevins Buckles  
**FENDERS:** 18"x18" Shaded Fender  
**STIRRUPS:** No. 2-90 Bell Bottom Leather Covered  
**WEIGHT:** Approximately 36 lb.  
**FINISH:** Oiled and Polished

NO. 0-4      Each

IN STOCK

# COLORADO CLASSIC

RAWHIDE COVERED  
FRONT - CHEYENNE ROLL  
AND HORN BINDING

RUSTIC  
BROWN  
ANTIQUÉ  
FINISH

CUSTOM MADE  
5 TO 7 WEEKS  
DELIVERY



This saddle can be supplied on any tree desired. (Saddle shown is on a sheppard tree.)

This Colorado Classic Saddle was created by our Factory to give a Rugged Long Wearing Saddle and still maintain an Attractive Finish.

Several Coats of the Rustic Brown Antique Finish is applied and then Hand Rubbed and Polished.

Rawhide Covering on the Front Cheyenne Roll, Horn Binding and Stirrups, give a Long Life to the Saddle also an Attractive Finish.

No. 0-31	Saddle As Shown	.....	Each
No. 0-30	Saddle Without Pockets	.....	Each
No. 1-47	Saddle Pockets 12" x 12" x 5"	.....	Pair

# THE *Colorado Saddlery* CO.

## CHAMPIONSHIP TROPHY SADDLES



CHAMPION  
 HEADER  
 CAMP CROOK  
 SO. DAK.  
 1972

Lettering you select can be stamped on both fenders of any saddle shown in this catalog, pages two through thirty-one.

Lettering is limited to five lines. The maximum number of letters on any line is nine.

When ordering, select the saddles you desire. Send the lettering information with your order. If the saddles you select are in stock, there will be only a short delay before shipment is made.

No. 28-4 Lettering charge as shown to be added to the price of the saddle selected, price for 1 pair fenders .....

No. 28-84 Lettering charge with black letters, price for 1 pair fenders .....

## Low Bronc

No. 0-148



### 0-148 "Low Bronc"

The popularity of this saddle is proven by the many repeat orders we receive. It's a good all-around ranch saddle featuring attractive diamond stamping and a padded seat.

**TREE:** Low Bronc. Bull Hide Covered.

**SEAT:** 14½" Quilted.

**CANTLE:** 3" Komfort.

**FORK:** 15" with Rope Strap.

**HORN:** 3".

**RIGGING:** 7/8" Double. S.S. Dee.

**SKIRTS:** Round Wool Lined. Breast Collar Dees.

**FLANK CINCHA:** 2¼" Skirting. Jerk Latigoes 1¾" Double and Stitched.

**CINCHA:** 17 Strand Mohair.

**STIRRUP LEATHERS:** 3" With Blevins Buckles.

**FENDERS:** 8" x 18" Shaped Fenders.

**STIRRUPS:** No. 2-90 3" Bell Bottom. Leather Covered.

**WEIGHT:** Approximately 35 pounds.

**FINISH:** Oiled and Polished.

No. 0-148



## The Del Norte

No. 0-86



The extra quality stands out in this smart-looking custom-made saddle. Built for maximum comfort on the well-proportioned low bronc tree. The neat scroll design, pigeon wing skirts and trim lines add plenty of eye appeal. Its superior quality matches its good looks.

- TREE:** Low Bronc. Bull Hide Covered.
- SEAT:** 15".
- CANTLE:** 3" Komfort. Cheyenne Roll.
- FORK:** 15" with Rope Strap.
- HORN:** 3".
- RIGGING:** Full Double Bronze Dees.
- SKIRTS:** Round, Wool Lined. Breast Collar Dees.
- FLANK CINCHA:** 2 1/4" Skirting. 1 3/4" Double and Stitched Jerk Latigoes.
- CINCHA:** 17 Strand Mohair.
- STIRRUP LEATHERS:** 3" With Blevins Buckles.
- FENDERS:** 8" x 18" Shaped Fenders.
- STIRRUPS:** No. 2-90 3" Bell Bottom. Leather Covered.
- WEIGHT:** Approximately 35 pounds.
- FINISH:** Oiled and Polished.

No. 0-86

## High Plains Drifter

No. 0-147



### 0-147 "High Plains Drifter"

The mountain riding cowboy will be right at home in this deep-seated saddle. The strong, rawhide covered tree is designed with a high cantle and good undercut fork for secure riding in rough country.

#### High Cantle—Deep Dish Diamond Stamped

- TREE:** Association. Rawhide Covered.
- SEAT:** 15".
- CANTLE:** 4½".
- FORK:** 14" with Rope Strap.
- HORN:** 3½" Cap.
- RIGGING:** 7/8 Double Rig S.S. Dee.
- SKIRTS:** Round Wool Lined. Breast Collar Dees.
- FLANK CINCHA:** No. 3-59 2¼" Skirting. 1¾" Double and Stitched Jerk Latigoes.
- CINCHA:** 17 Strand Mohair.
- STIRRUP LEATHERS:** 3" With Blevins Buckles.
- FENDERS:** 8" x 18" Shaped Fenders..
- STIRRUPS:** No. 2-90, 3" Bell Bottom. Leather Covered.
- WEIGHT:** Approximately 36 pounds.
- FINISH:** Not Oiled.

No. 0-147



## Custom Rustic High Cantle

No. 0-152



### 0-152 "Custom High Country"

You'll ride the mountains in secure comfort in this saddle that's built for rough work. Rawhide bindings on the cantle and around the horn and fork add years of service. A good saddle for packers and hunters.

#### Made on Association

##### Hide Covered Tree

- TREE:** ASSOCIATION. Bull Hide Covered.
- SEAT:** 15".
- CANTLE:** 4½", Rawhide Bound Cantle.
- FORK:** 14" Rawhide Covered Fork.
- HORN:** 3½" Cap.
- RIGGING:** 7/8" Double, SS Dees with Wear Leathers.
- SKIRTS:** Round Wool Lined. Breast Collar Dees.
- FLANK CINCHA:** No. 3-59, 2¼" Skirting. 1¾" Double and Stitched Jerk Latigoes.
- CINCHA:** 17 Strand Mohair.
- STIRRUP LEATHERS:** 3" With Blevins Buckle.
- FENDERS:** 8" x 18" Shaped Fenders.
- STIRRUPS:** No. 2-90, 3" Bell Bottom. Leather Covered.
- WEIGHT:** Approximately 36 pounds.
- FINISH:** Rustic Brown Antique Finish.



No. 0-152



## High Team Dally Roper

No. 0-153



### 0-153 "High Team Dally Roper"

The professional roper is a special kind of horseman - athlete, so we designed this custom saddle with him in mind. It features a narrow 15½ inch foam-cushioned seat, top quality skirting leather with hand-tooled corners that's oiled and polished, and 7/8 double rigging constructed to cinch-down snugly on your horse's back.

#### Corner Tooled—Quilted Seat Rawhide-Bound Horn

- TREE:** Sheppard Roper, Bull Hide Covered  
**SEAT:** 15½" Quilted.  
**CANTLE:** 3" Cheyenne Roll.  
**FORK:** 13" with Rope Strap.  
**HORN:** 3" Head. Post Horn, 4".  
 Rawhide Bound Wrapped.  
**RIGGING:** 7/8" Double, S.S. Dees..  
**SKIRTS:** Square Wool Lined with Breast Collar  
 Dees.  
**FLANK CINCHA:** No. 3-64, 4" Tapered to 2¼",  
 1¾" Double and Stitched Jerk Latigoes.  
**CINCHA:** 24 Strand Mohair.  
**STIRRUP LEATHERS:** 3" With Blevins Buckles.  
**FENDERS:** 8" x 18" Shaped Fenders  
**STIRRUP:** No. 2-89, 3" Roper  
 Rawhide Covered.  
**WEIGHT:** Approximately 38 pounds.  
**FINISH:** Oiled and Polished.

No. 0-153

## Classic Wonder

No. 0-145



### 0-145 "Little Wonder Show Saddle"

Good riding comfort plus good looks are combined in this attractive show saddle. Stainless steel Conchos accent the quality hand-stamped leather.

**Stainless Steel Laced—Fork and Cantle**  
**Nickle Silver—Horn Cap and Name Plate**

**TREE:** Little Wonder, Rawhide Covered.

**SEAT:** 15" Quilted.

**CANTLE:** 3" Cheyenne Roll. S.S. Laced.

**FORK:** 12" S.S. Laced.

**HORN:** 2 1/4" N.P. Horn Cap.

**RIGGING:** 7/8" Double. S.S. Dees.

**SKIRTS:** Square Wool Lined. Breast Collar Dees.

**FLANK CINCHA:** 1 3/4" Skirting Jerk Latigoes.

**CINCHA:** 15 Strand Mohair.

**STIRRUP LEATHERS:** 3" With Blevins Buckles.

**FENDERS:** 8" x 18" Shaped Fenders.

**STIRRUPS:** 2" Visialia. Leather Covered.

**WEIGHT:** Approximately 35 pounds.

**FINISH:** Oiled and Polished.



No. 0-145



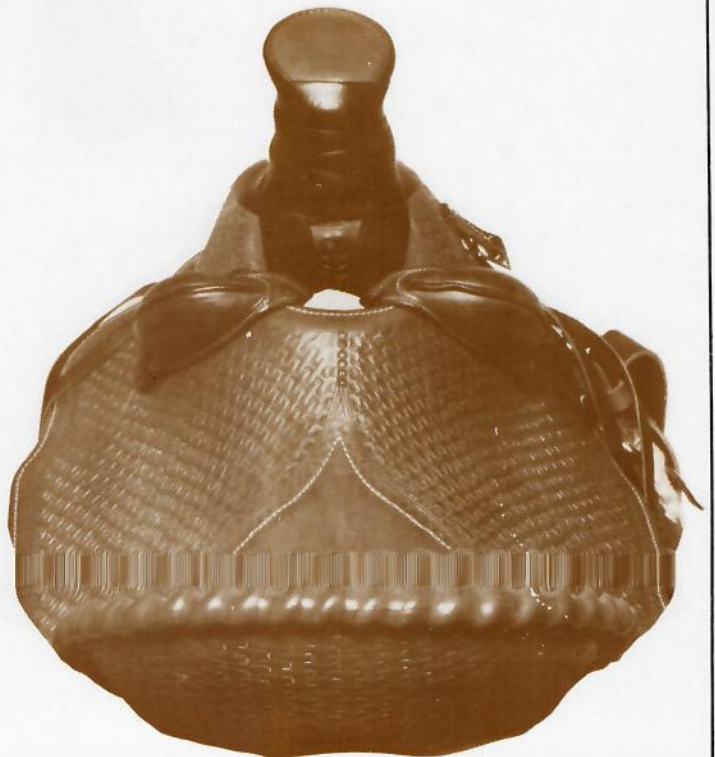
## Buckaroo

### No. 0-14

#### 0-14 "Buckaroo"

We brought back the old-time cowboy saddle, but improved the Bar and Gullet to fit all types of horses. It's sharp looking and has the finest finish work.

- TREE:** A-Fork. Rawhide Covered.
  - SEAT:** 15½".
  - CANTLE:** 5" Rope Binding. 1" Dish.
  - FORK:** 8" with Rope Strap.
  - GULLET:** 8½" High, 6" Width.
  - HORN:** #5 4" High 3" Cap.
  - RIGGING:** 7/8" Double Brass Ring with Wear Leather.
  - SKIRTS:** Square Wool Lined with Breast Collar Dees.
  - FLANK CINCHA:** No. 3-64 4" Wide. Double and Stitched.
  - CINCHA:** No. 3-34 29 Strand, 32" Long.
  - STIRRUP LEATHERS:** 3" Wide Laced.
- 
- FENDERS:** 7" x 18" with Stirrup Leather on Outside.
  - STIRRUP:** No. 2-96 Oxbow Rawhide Covered.
  - WEIGHT:** Approximately 40 pounds.
  - STAMPING:** Full Basket Stamp.
  - FINISH:** Med. Oiled and Polished.



## Weatherly

No. 0-2



### 0-2 "Weatherly"

The working cowboy appreciates this kind of saddle. The narrow seat and the 7/8 in-skirt rigging puts you closer to your horse. It can be adapted to any custom feature you choose.

**TREE:** Weatherly Bull Hide Covered

**SEAT:** 15½"

**CANTLE:** 4" Rawhide Bound Cantle.

**FORK:** 9"

**GULLET:** 8" High, 6" Wide.

**HORN:** 3½" High ¾ Cap.

**RIGGING:** 7/8" Inskirt Powder River Plate.

**SKIRTS:** Square Skirts Wool Lined with Breast Collar Dee.

**FLANK CINCHA:** No. 3-64 4" Wide. Double Stitched.

**CINCHA:** No. 3-34 29 Strand 32" Long.

**STIRRUP LEATHERS:** 3" Wide No. 24-225 Buckle.

**FENDERS:** 8" x 18" Shaped Fenders.

**STIRRUP:** No. 2-89 Rawhide Covered.

**WEIGHT:** Approximately 40 pounds.

**STAMPING:** Basket Stamp.

**FINISH:** Med. Oiled and Polished.

No. 0-2

## Pony Express

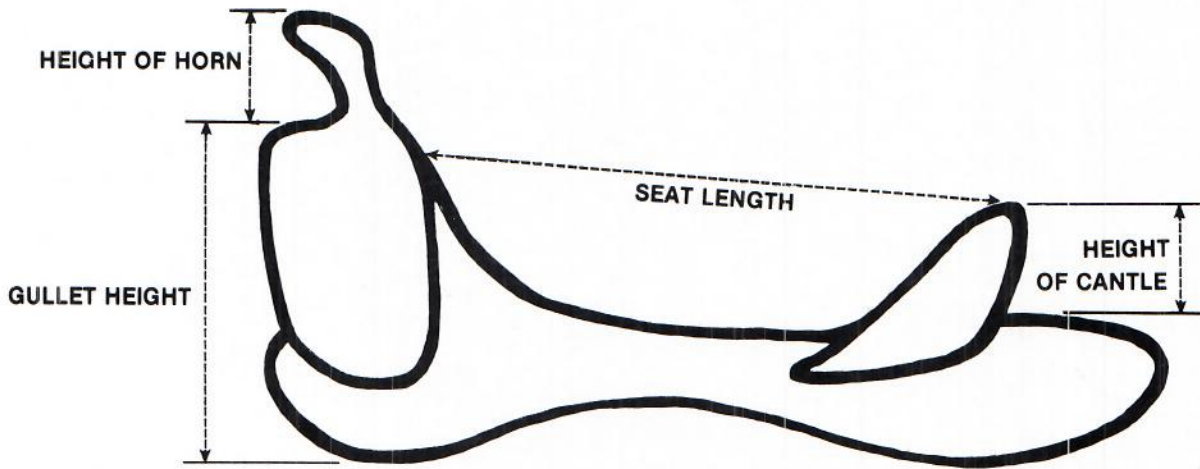
0-107



No. 0-107 PONY EXPRESS. Here's a High Country Saddle with a handy feature...handholds in the cantle for easier saddling. You'll get maximum comfort and security from the narrow, deep seat plus long wearing service.

- TREE:** Slick Fork Roper. With Hand Hold. Rawhide Covered.
- SEAT:** 15".
- CANTLE:** 5" Rawhide Bound Cantle.
- FORK:** 9" Rawhide Covered Fork.
- GULLET:** 8" High 6" Width.
- HORN:** #6 3" Post 2½" Cap with Wear Leather.
- RIGGING:** 7/8 Double S.S. Dee w/wear leather.
- SKIRTS:** Round, Wool Lined with Breast Collar Dees.
- FLANK CINCHA:** No. 3-59 2¼" Skirting.
- CINCHA:** 17 Strand Mohair.
- STIRRUP LEATHERS:** 3" with Blevins Buckle.
- FENDERS:** 8" x 18" Shaped Fenders.
- STIRRUPS:** No. 2-90 3" Bell Bottom. Leather Covered.
- WEIGHT:** Approximately 36 pounds.
- FINISH:** Rustic Brown Antique.

No. 0-107



**WHEN ORDERING, CUSTOM SADDLES,  
PLEASE GIVE THE  
FOLLOWING INFORMATION:**

1. STYLE OF TREE
2. SEAT SIZE
3. FORK SIZE
4. CANTLE HEIGHT
5. GULLET SPREAD & HEIGHT
6. RIGGING
7. SKIRTS - ROUND, SQUARE OR PIGEON WING.
8. STIRRUP LEATHER STYLE
9. STYLE OF STIRRUPS
10. STAMPING
11. FINISH

