

## @trip PC

@trip PC is a specialized software that can auto-add GPS information on the photos taken on your journey and present your journey lively on 3D map. Besides, @trip PC offers great functionality that allows you to create, customize and export your trips in various file formats, in order to share many traveling fun times with your family and friends.

Using @trip PC can be as simple as three short steps:

- >> [Launch @trip PC](#)
- >> [Start A Trip](#)
- >> [Share A Trip](#)

[Next](#)

## Start Using @trip PC

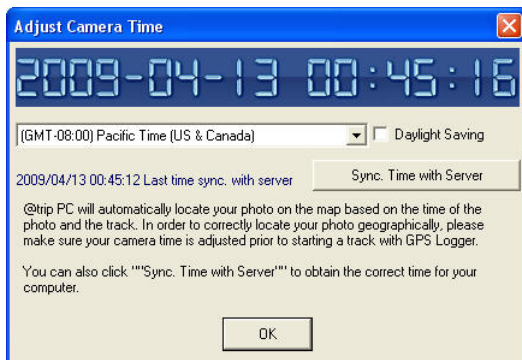
Easy-to-use interface. Let @trip PC do all the hard work for you!

### Main menu bar





Main menu bar provides you with quick accesses to the main functions and information concerned.

- Import GPS Track** : Click to to launch Import Wizard to import GPS log data.
- Share Trip**: Click to share your trip by uploading to @trip server (including an option to make it public), exporting to file, or any advanced options.
- Download from @trip server**: Click to download trip(s) previously uploaded to @trip Server.
- New Trip**: Click to add a new trip.
- Edit Trip**: Click to edit existing track(s).
- Photo Locator**: Click to either geotag or locate photo(s).
- Location Viewer**: Click to launch **Location Viewer**.
- Adjust Camera Time**: Click to adjust the time of your camera.





**Note:** For correct mapping of track data and photos, please make sure your camera time is adjusted prior to starting a track. Or click **Sync. Time with Server** to obtain the correct time from server.


 **Hardware Settings:** Click to customize the tracking modes of your GPS Logger .

 **Clear Device Data:** Click to clear the GPS logs saved on your GPS Logger.

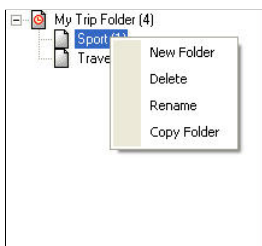
 **Track Management:** Click to manage all existing tracks.

 **Software Settings:** Click to customize the @trip PC settings.

 **Visit @trip:** Click to connect to @trip website: [www.a-trip.com](http://www.a-trip.com).

 **Help:** Click to bring up @trip PC Help file.

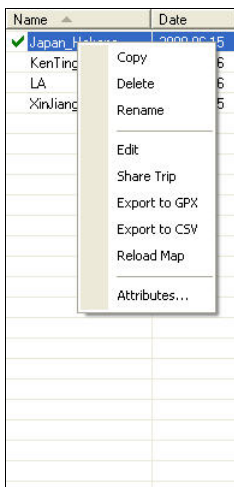
### Trip folder window



This trip folder window gives a clear view of how trips are categorized and stored. Right-click on a folder to see more options:

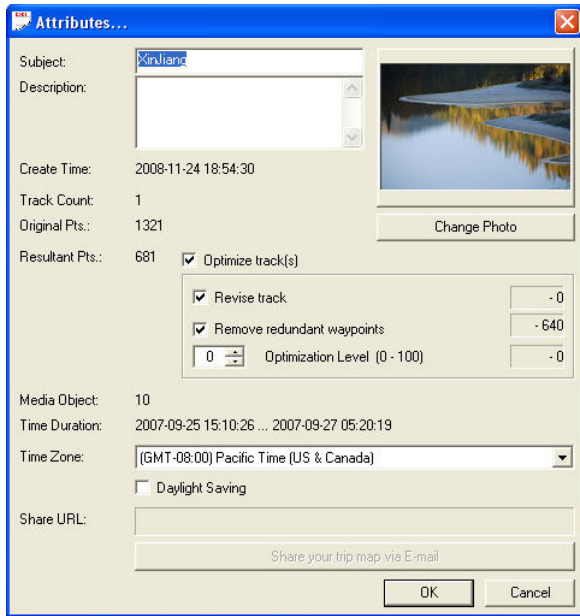
- **New Folder:** A sub-folder will be created under the selected folder.
- **Delete:** The selected folder will be deleted.
- **Rename:** The selected folder can be renamed.
- **Copy Folder:** The selected folder will be duplicated.

### Trip information window



Trip information window gives a clear view of all the imported trips in selected trip folder. Right-click on a trip to see more options:

- **Copy:** The selected trip will be duplicated.
- **Delete:** The selected trip will be deleted from the list.
- **Rename:** The selected trip can be renamed.
- **Edit:** The selected trip can be edited by launching the [Trip Composer](#).
- **Share Trip:** The selected trip can be shared by launching the [Share Wizard](#).
- **Export to GPX:** The selected trip can be exported to a GPX file (.gpx).
- **Export to CSV:** The selected trip can be exported to a CSV file (.csv).
- **Reload Map:** The map of selected trip will be refreshed.
- **Attributes...:** The attributes of selected trip can be edited in a pop-up dialog.



**Next**

## Start A trip

Try one of the methods below to start a trip:

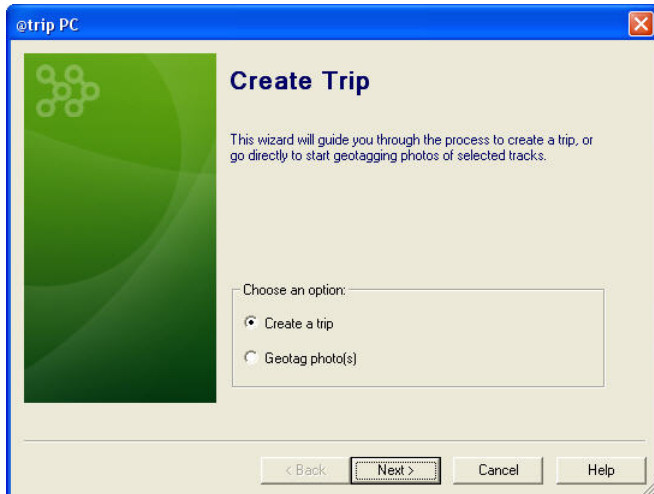
### A. Start A Trip by Launching @trip PC

Launch @trip PC, and you'll be prompted to download log data from your GPS device if connected to PC.

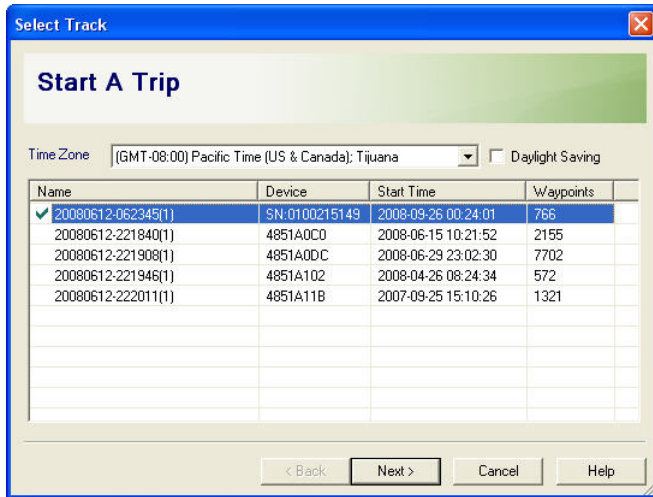


1. Make sure your GPS device is connected to PC, and click **Yes** to start downloading logged track data.
2. In the following **@trip PC** wizard, choose **Create a trip** to proceed.

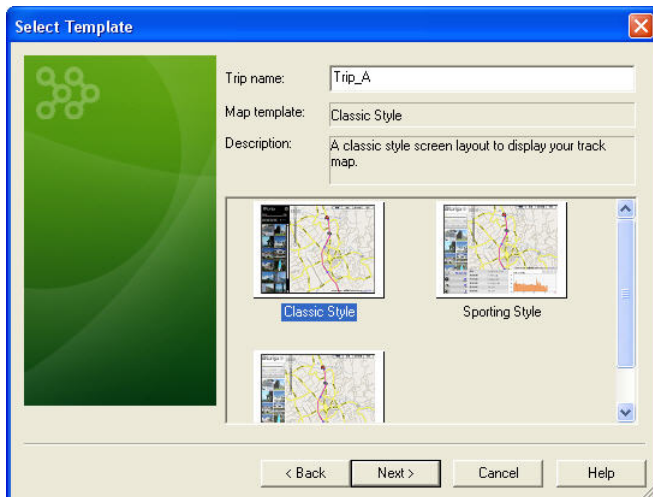
If you choose to start geotagging photo(s), the wizard will direct you to add in photo(s). See [Photo Locator](#) for more detailed procedures.



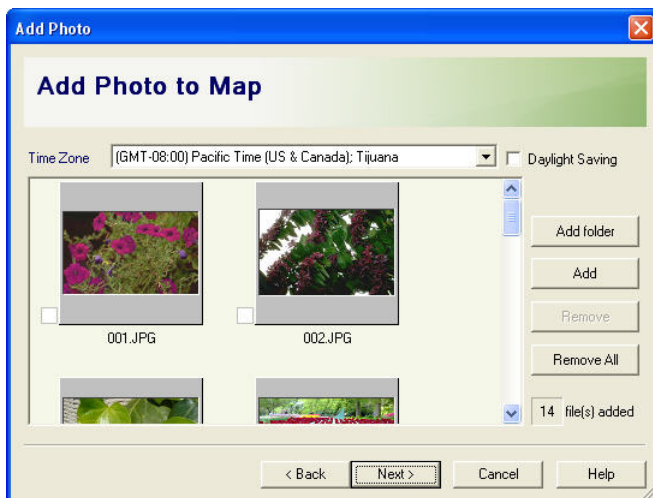
- 3. Select track(s) to create a trip, and click **Next** to continue.



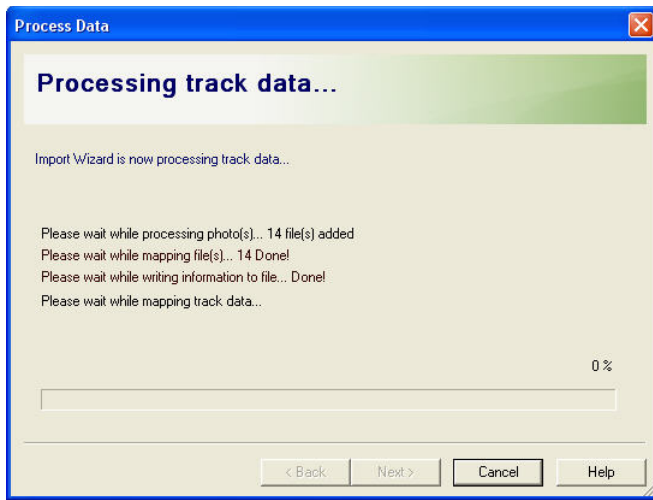
- 4. Enter a trip name and select a map template to display your trip.



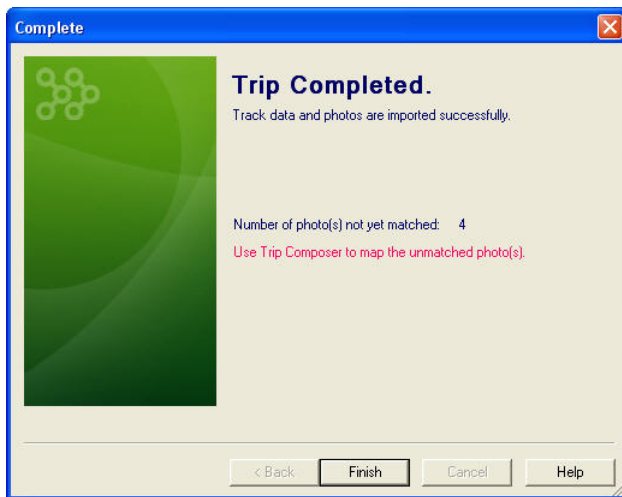
- 5. Click **Add** or **Add folder** to import photos, and click **Next** to continue.



- 6. The wizard will start processing track data.




7. Finally, a trip is completed.




\*If added photos failed to match imported track data, click  to launch [Trip Composer](#) to map the unmatched photos.

### B. Start A Trip by Creating A New Trip

Click  on the main menu bar, and you'll be prompted to select from imported tracks to start a new trip. See [Method A](#) for the rest of data import process.

### C. Start A Trip by Importing GPS Track

Click  on the main menu bar, and the Import Wizard will prompt you for more import options:



1. **Import data from device:** The Import Wizard will start downloading log data from your GPS device. See [Method A](#) for the rest of data import process.
2. **Import data from file (\*.gpx, \*gpk):** This option allows you to import a previously exported gps file (ex. \*.gpx, \*gpk). See [Method A](#) for the rest of data import process.


**Next**

## Compose Trip

Select a trip from the trip information window, and click  on the main menu bar to launch **Trip Composer**.


### Function Menu Bar




 **Save & Exit:** Click to either save changes and exit Trip Composer, exit without saving changes, or return to composer without saving.

 **Import GPS Track:** Click to import track(s).

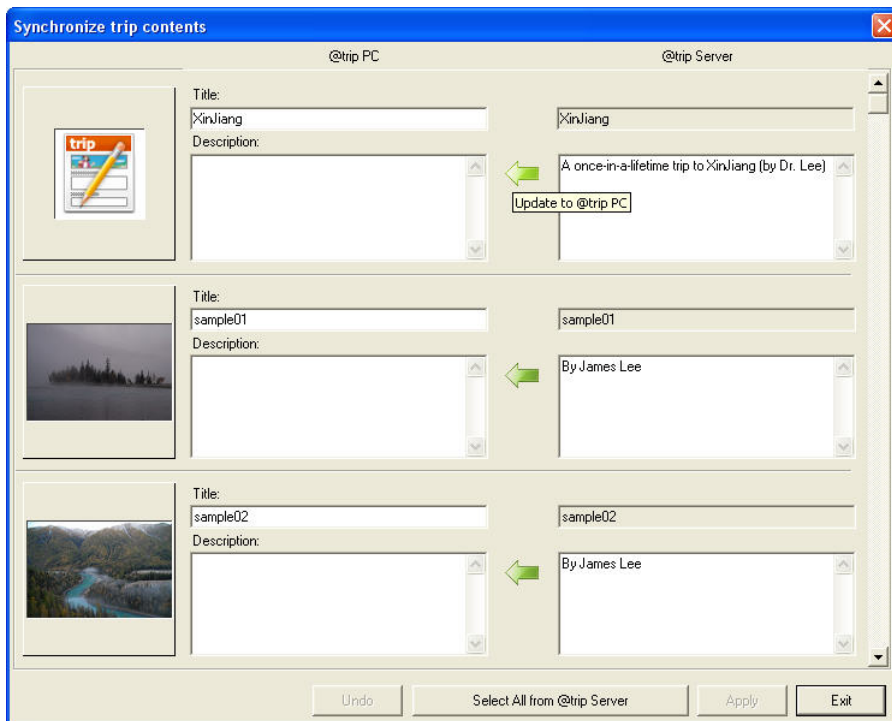
 **Import Photo:** Click to import photo(s).


 **Locate Photos:** Click to launch **Photo Locator** to relocate photos that are inaccurately located on the map due to incorrect camera time.

 **Synchronize:** Click to synchronize trips in @trip PC and @trip server.



- Update to @trip PC: Click to replace current trip contents in @trip PC with selected trip contents from @trip server.
- Select All from @trip Server: Click to select all the trip contents from @trip server, and click Apply to replace the trip contents in @trip PC.

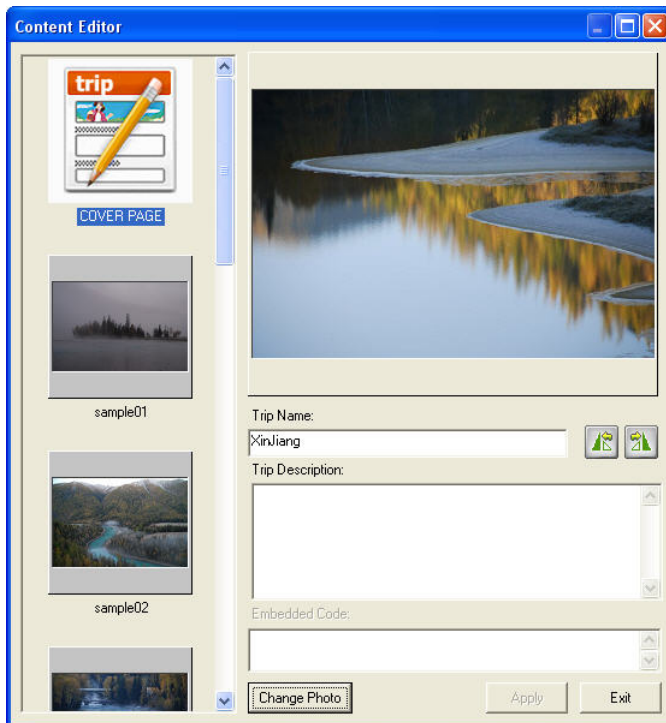
Note: While synchronizing trip contents, only the comparison differences of trip contents in @trip PC are displayed.





 **Content Editor:** Click to quickly edit Cover Page or photos of the trip.

- Edit Cover Page: Enter a trip name and its brief description, or click Change Photo to select a different photo as the Cover Page of the trip.
- Edit photo: Enter a photo title and its brief description.

Click  or  anytime to rotate the photo left or right.



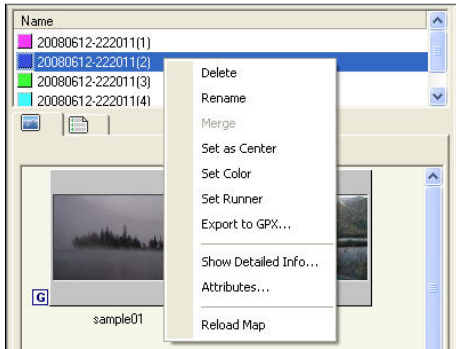
 **Template:** Click to select a map template.

 **Set Runner:** Click to set up a **Runner** image to play the track animation on the map.



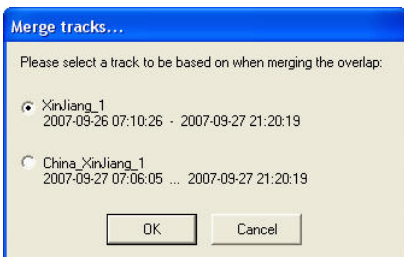
Help: Click to bring up @trip PC Help file.

### Track information window

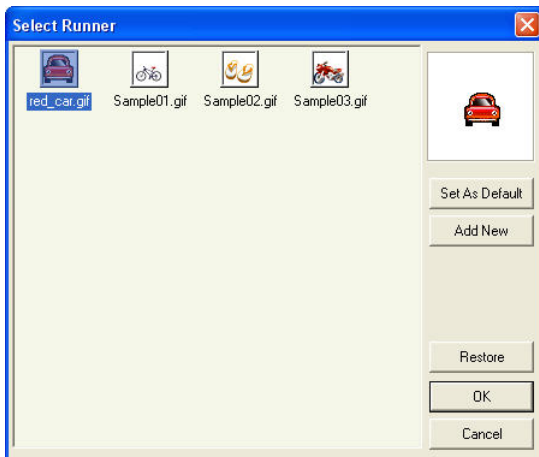


At the track information window, right-click a selected track to see more options:

- **Delete:** The selected track will be deleted.
- **Rename:** The selected track can be renamed.
- **Merge:** The selected tracks will be merged.
  1. If the track time of selected tracks does not overlap, selected tracks will be merged automatically after clicking **Merge**.
  2. If there is a overlap of track time among selected tracks, please select a primary track to be based on when merging the overlap:

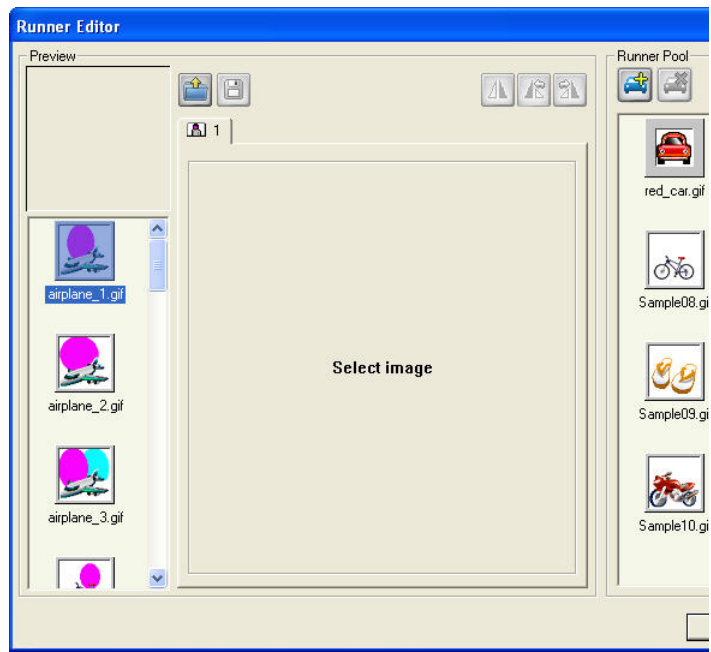


- **Set as Center:** The selected track will be set as the center of the map.
- **Set Color:** The selected track can be added a color to be distinct.
- **Set Runner:** A **Runner** image can be set up to play the track animation on the map.



- Select a **Runner** image and click OK to exit.
- Click Save As Default, and the selected image will be set as the default **Runner** image whenever the animation is started.
- Click Add New to add a new image using **Runner Editor**.
- Click Restore, and Trip Composer will use the image previously set as default **Runner** to run animation.





- **Export to GPX...**: The selected track can be exported to a .gpx file.
- **Show Detailed Info...**: The detailed waypoints information of the selected track will be displayed in a pop-up window.

Waypoints information

Time	Latitude	Longitude	Altitude	Distanc...	Leg Ti...	Speed...	Course
✓ 2007/09/26 07:55:13	N 48.657635	E 87.034981	0.00	61.6	69	1.9	280.7
✓ 2007/09/26 07:56:22	N 48.657738	E 87.034157	0.00	5.8	68	1.6	215.9
✓ 2007/09/26 07:57:30	N 48.657696	E 87.034111	0.00	55.6	60	1.9	303.2
✓ 2007/09/26 07:58:30	N 48.657970	E 87.033478	0.00	188.8	71	0.5	113.8
✓ 2007/09/26 07:59:41	N 48.658028	E 87.033928	0.00	7.3	60	2.6	50.1
✓ 2007/09/26 08:00:41	N 48.657904	E 87.034904	0.00	46.2	58	2.7	85.9
2007/09/26 08:01:39	N 48.657530	E 87.034157	0.00	62.4	61	4.3	43.8
✓ 2007/09/26 08:02:40	N 48.657117	E 87.034157	0.00	43.5	61	4.7	50.7
✓ 2007/09/26 08:03:41	N 48.657575	E 87.034157	0.00	0.1	0	0.0	0.0
✓ 2007/09/26 08:05:00	N 48.657766	E 87.034157	0.00	47.1	61	9.7	93.0
✓ 2007/09/26 08:06:01	N 48.657406	E 87.034157	0.00	57.9	59	0.9	275.0
2007/09/26 08:07:00	N 48.657621	E 87.034157	0.00	16.7	66	0.3	289.5
2007/09/26 08:08:06	N 48.6577407	E 87.034157	0.00	87.1	60	1.5	136.9
✓ 2007/09/26 08:09:06	N 48.657429	E 87.038216	0.00	1095.6	81	24.5	158.8
✓ 2007/09/26 08:10:27	N 48.648243	E 87.043610	0.00	722.1	62	48.6	169.0
✓ 2007/09/26 08:11:29	N 48.641869	E 87.045486	0.00	949.9	105	57.6	173.8
✓ 2007/09/26 08:13:14	N 48.633377	E 87.046890	0.00	40.6	89	9.8	308.0

Exit

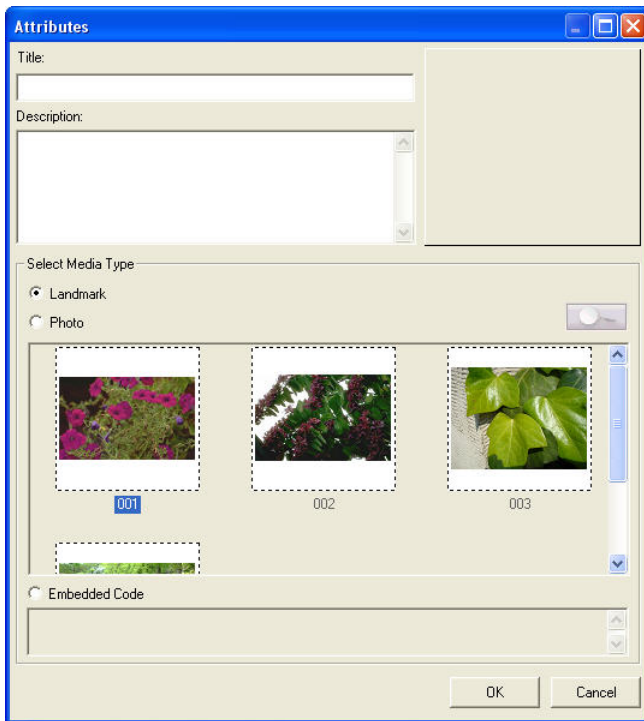
For each individual waypoint of the track, you can:

- Split: Split the selected waypoint into two.
- Remove Above: Remove the waypoint(s) listed above the selected one from the track.
- Remove Selected: Remove the selected waypoint from the track.
- Remove Below: Remove the waypoint(s) listed below the selected one from the track.
- Set as Landmark...: Set the selected waypoint as a landmark.

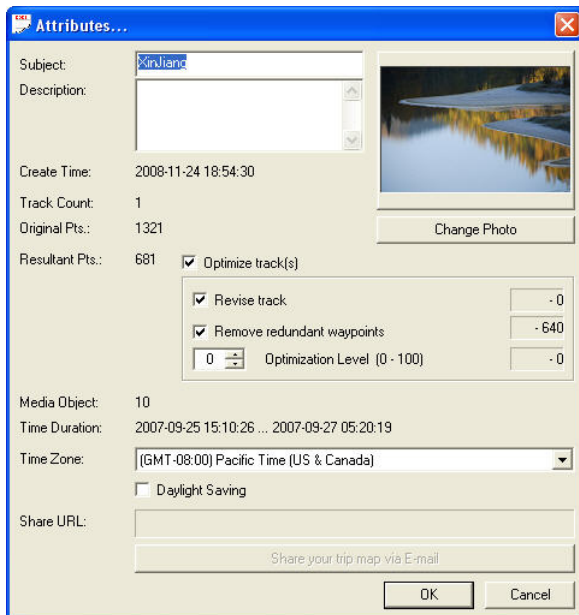
**To set a landmark:**

1. Enter a title for this landmark.
2. Enter brief description about this landmark.
3. Select a media type for this landmark:
  - o Landmark: Select this media type, and the landmark will be presented by text (title and description) only on the map.
  - o Photo: Select this media type, and the landmark will be presented with a selected photo on the map.
  - o Embedded Code: Select this media type, and the landmark can be set up by entering an embedded html code.

**Note:** To avoid unexpected security loophole, landmarks configured with embedded code will not be displayed on @trip Service at this moment.



- **Attributes...**: The attributes of the selected track can be edited in a pop-up dialog. Click Change Photo to select a different photo as the Cover Page of the trip.



- **Reload Map**: Click to refresh and reload the map displayed at the right half of the composer window.

### Track Content Folder

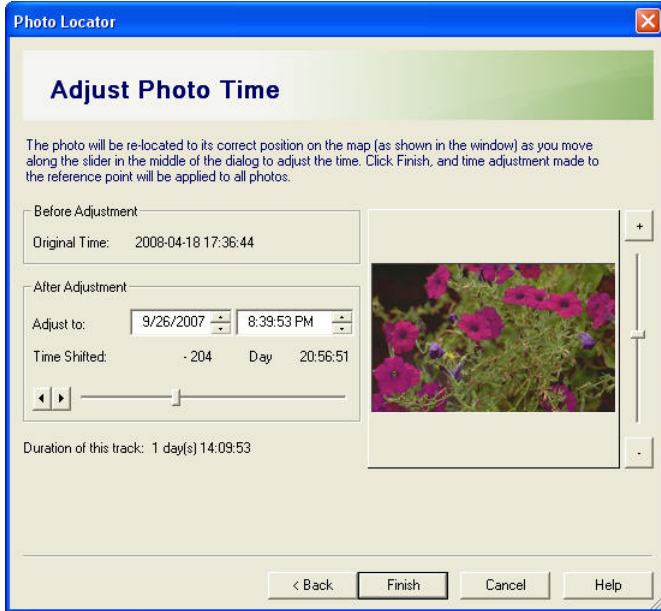
**Photo/Landmark**: Photos matching the track and configured landmarks are presented in the upper window of this folder. Photos added to the trip without matching any track are presented in the lower window of this folder.

Right-click any landmark/photo in the **upper** window to see more options:

- **Select All**: All landmark(s) and photo(s) in this window will be selected.
- **Remove from Map**: The selected landmark/photo will be removed from the map.
- **Attributes...**: Attributes of the selected landmark/photo can be edited.

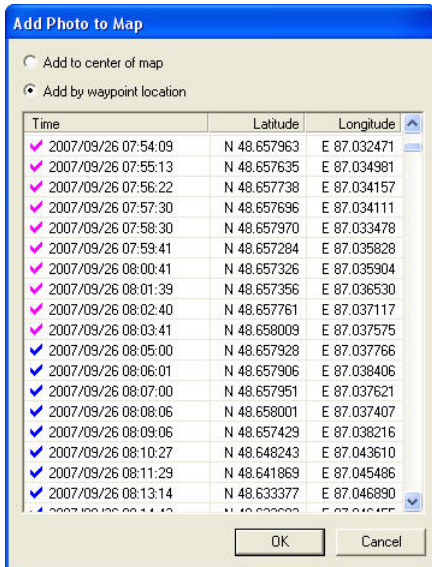
- **Locate Photos...:** Time of the selected photo(s) can be adjusted in [Photo Locator](#).

1. Choose a photo as the reference point, based on which time adjustment will be made to the rest of the photos.
2. Use the slider bar in the middle to adjust photo time, and photos will be re-located on the map (as shown in the background window) while time adjustment is being made. Click +/- signs or drag the slider bar next to the photo frame upward/downward to zoom in/out the map in the background window.
3. Click **Finish** to complete photo time adjustment.

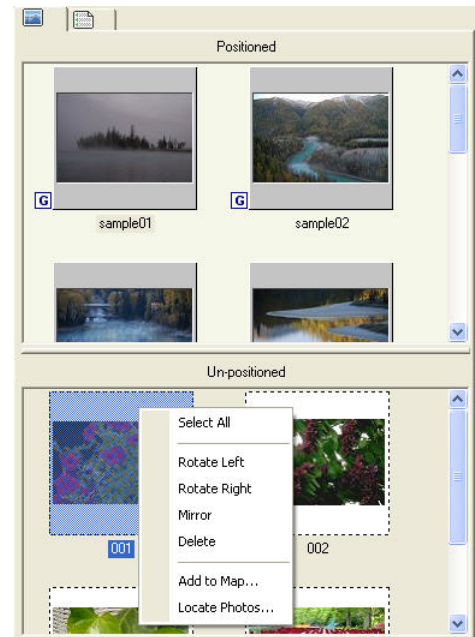
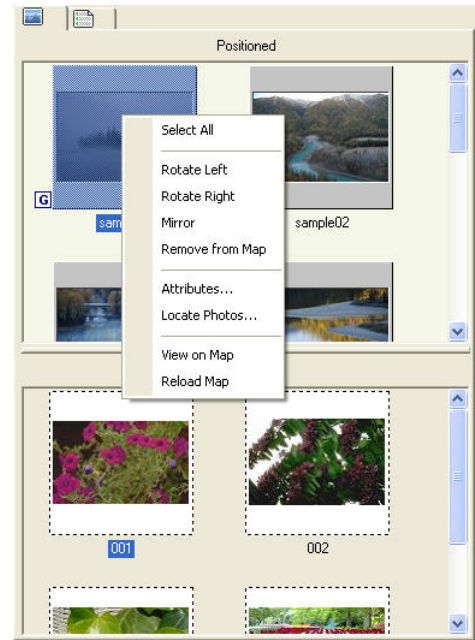


- **View on Map:** The selected landmark/photo will be displayed on the map.
  - **Reload Map:** The previously displayed map at the right will be refreshed.
- On the other hand, right-click any photo not yet matching any track in the lower window to see more options:

- **Select All:** All photo(s) in this window will be selected.
- **Rotate Left:** The selected photo will rotate 90 degree to the left.
- **Rotate Right:** The selected photo will rotate 90 degree to the right.
- **Mirror:** The selected photo will be shifted to its symmetric view.
- **Delete:** The selected photo will be deleted from the trip.
- **Add to Map...:** The selected photo(s) will be added either to the center of the map or by waypoint location. Once it is added, it'll appear in the upper window.



- **Locate Photos...:** Time of the selected photo(s) can be adjusted with this option. Use the slider bar in the middle to adjust the time to desired. See [Photo Locator](#) for more details.



**Waypoints:** Waypoints of selected track are listed in this folder.

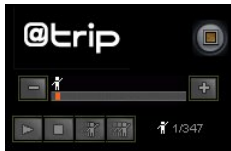
Right-click any listed waypoint to see more options:

- **Split:** Split the selected waypoint into two.
- **Remove Above:** Remove the waypoint(s) listed above the selected one from the track.
- **Remove Selected:** Remove the selected waypoint.
- **Remove Below:** Remove the waypoint(s) listed below the selected one from the track.
- **Set as Landmark...:** Set the selected waypoint as a landmark.
- **Show Detailed Info...:** The detailed waypoints information of the selected track will be displayed in a pop-up window.

Time	Latitude	Longitude
2007/09/26 07:52:53	N 48.657696	E 87.034325
2007/09/26 07:54:09	N 48.657963	E 87.032471
2007/09/26 07:55:13	N 48.657635	E 87.034981
2007/09/26 07:56:22	N 48.657738	E 87.034157
2007/09/26 07:57:30	N 48.657696	E 87.034111
2007/09/26 07:58:30	N 48.657970	E 87.033478
2007/09/26 07:59:41	N 48.657284	E 87.035828
2007/09/26 08:00:26	N 48.657284	E 87.035904
2007/09/26 08:01:06	N 48.657284	E 87.036530
2007/09/26 08:01:51	N 48.657284	E 87.037117
2007/09/26 08:02:28	N 48.657284	E 87.037575
2007/09/26 08:03:06	N 48.657284	E 87.037766
2007/09/26 08:03:51	N 48.657284	E 87.037621
2007/09/26 08:04:29	N 48.657284	E 87.037407
2007/09/26 08:05:13	N 48.657284	E 87.038216
2007/09/26 08:05:43	N 48.657284	E 87.043610
2007/09/26 08:11:29	N 48.641869	E 87.045486
2007/09/26 08:13:14	N 48.633377	E 87.046890
2007/09/26 08:14:43	N 48.633602	E 87.046455
2007/09/26 08:15:48	N 48.633350	E 87.047173
2007/09/26 08:16:57	N 48.633530	E 87.045822
2007/09/26 08:18:13	N 48.633450	E 87.046631
2007/09/26 08:19:21	N 48.633492	E 87.047440
2007/09/26 08:20:33	N 48.633377	E 87.047226
2007/09/26 08:21:40	N 48.633175	E 87.047348
2007/09/26 08:22:48	N 48.633316	E 87.046722
2007/09/26 08:23:52	N 48.633488	E 87.047852

### Playback preferences & Current track information

You can select the playback speed and check the playback progress information here.

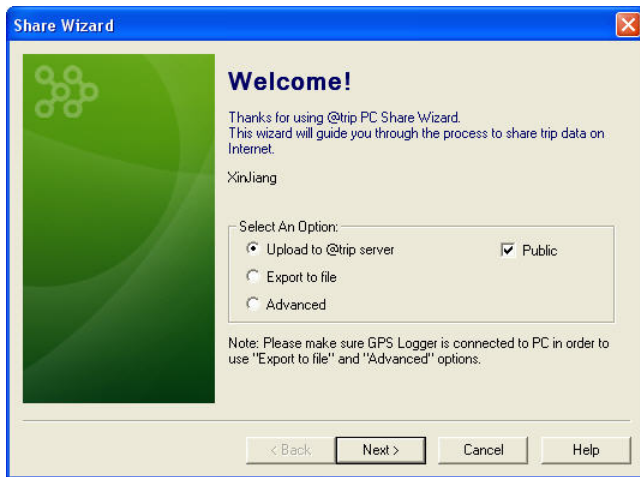


	Switch between Map Mode and Slideshow Mode
	Backward by one auto-selected waypoint
	Forward by one auto-selected waypoint
	Progress bar of the current track
	Stop playing back the current track
	Start playing back the current track
	Pause the currently played back track
	Speed up the playback
	Slow down the playback
	Current auto-selected waypoint/total auto-selected waypoints
	Current selected waypoints with geotagged photo/total selected waypoints with geotagged photos

Next

## Share A Trip

On the main menu bar of @trip PC, click to share your trip in different options.

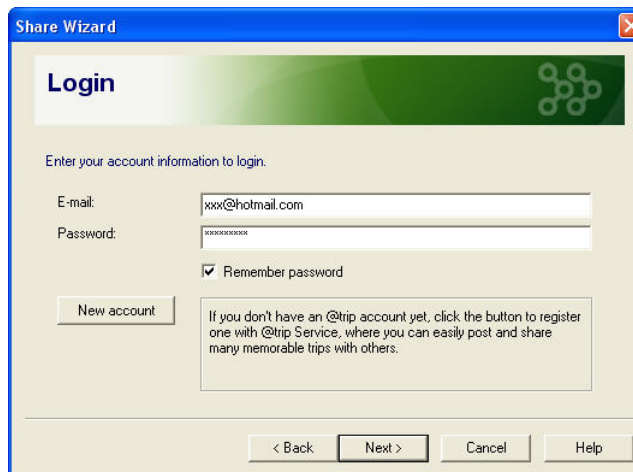


**Note:** Please make sure GPS Logger device is connected to PC in order to use **Export to file** and **Advanced** options.

**1. Upload to @trip server**

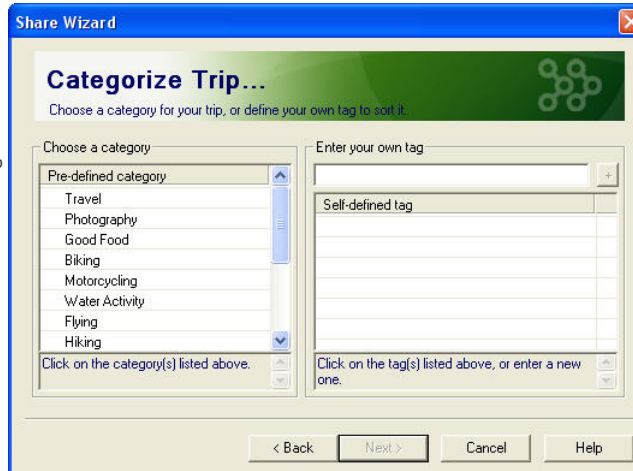
- At the Login page, enter your email address (previously registered with [@trip Service](#)) and password. If you don't have an @trip account yet, click New account to register one with [@trip Service](#), where you can easily post and share many memorable trips with others.

Click **Next** to proceed.



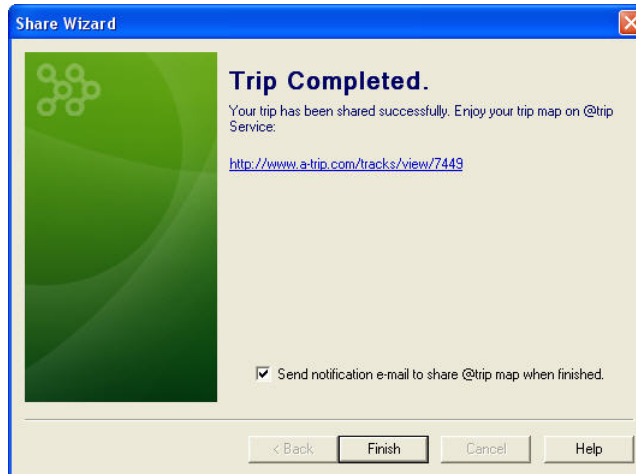
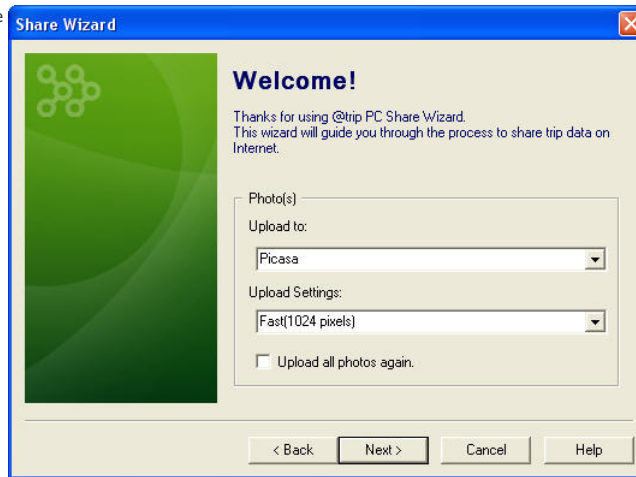
- Before uploading the trip, choose a category that best describes the type of your trip. From the left column of the dialog, you may choose the category by clicking on one or more items that are listed. If none of the listed items suits your trip, you may choose from the existing self-defined tags listed on the right column (previously defined on @trip server), or simply enter a new one.

Click **Next** to proceed.

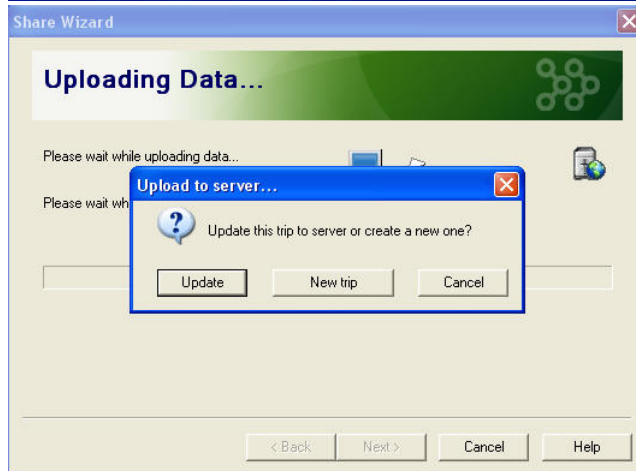


- Choose a destination to upload the photos of your trip to.
  - If you choose to upload photos to **@trip server**, the Share Wizard will immediately upload your trip along with the photos directly to your account on @trip server.
  - If you choose to upload photos to either **Picasa** or **Flickr** web album, you'll be prompted to login to your account at Picasa or Flickr first,

followed by uploading the photos to the album. Then, the Share Wizard will continue to upload your trip to @trip server to finalize the share process.



**Note:** If the trip you're uploading has been previously uploaded to @trip server, the Share Wizard will prompt you for a decision whether to update the trip to server or create a new one.



**2. Export to file**

This share option allows you to export the entire trip content to a zipped MHT file (\*.zip).

**3. Advanced**

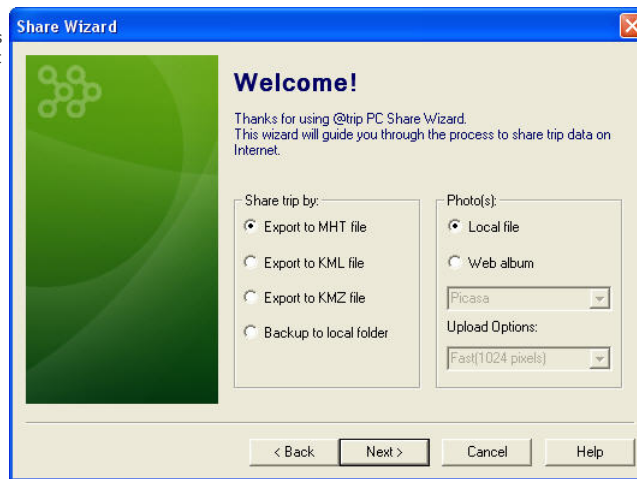
- Export to MHT file
- Export to KML file
- Export to KMZ file
- Backup to local folder

The **Advanced** option allows you to export your entire trip content (including track data, map, photos, etc.) to different file formats, such as \*.mht, \*.kml, and \*.kmz.

When Export to MHT file or Export to KML file is selected, you can further choose to either save the photos of your trip content in the exported local file or simply upload them to web albums, like Picasa or Flickr directly.

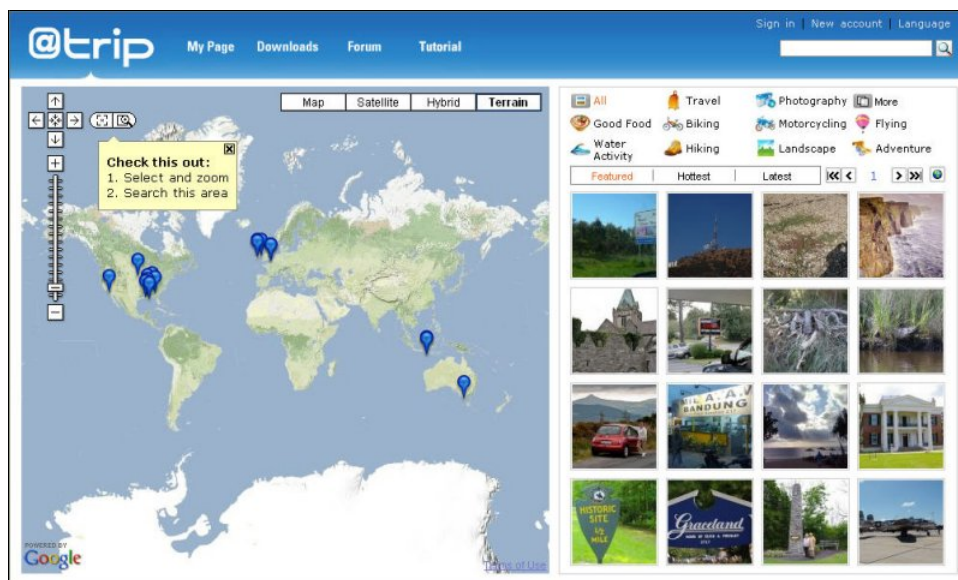
In addition, the **Advanced** option also allows you to simply backup your entire trip content to a local folder, which makes it easy to further burn it on a CD/DVD for future use.

**Note:** In order to display KML or KMZ files when exported, you must have Google Earth installed.



### @trip Service

By connecting to @trip Service, you'll be able to create your personal travel blog where you can share your memorable trips with others, as well as check out many more trips of other travelers.



### My Page

This is the blog page where you can personalize to share traveling information (including tracks and photos) with blog readers. Upload your tracks here, and tell your stories, favorite routes, best courses and etc. along your journeys.

### Downloads

All the latest applications and tools associated with @trip PC can be downloaded on this page.

### Forum

Travelers who register with @trip travel blog are welcomed to share their comments and fun times in this forum, or start any discussion session to gather more thoughts.

### Tutorial


This page includes a collection of software tutorials and related documents to get registered travelers started on various products/service.

### Next

# Photo Locator

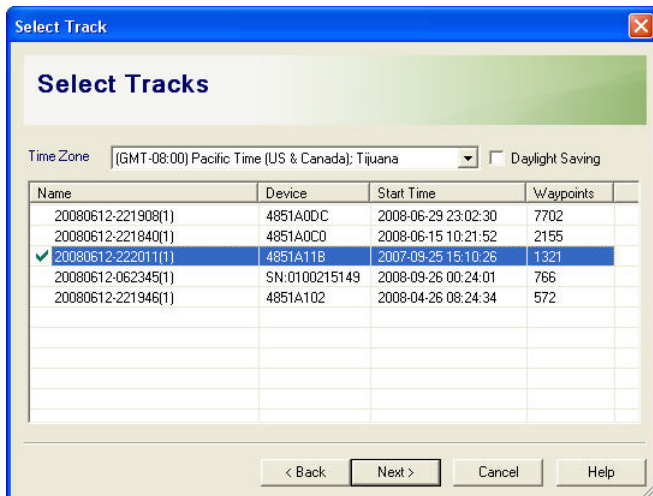
**Photo Locator** allows you to quickly finish geotagging as well as writing geographical coordinates to the photo(s) taken along your trip. Photo(s) geotagged can then be uploaded to either **Flickr** or **Picasa**, so as to share memorable moments of your journey with others. In addition, it also assists you to re-position any of your photos on the track that has been inaccurately located on the map due to incorrect camera time.

## A. Start by Importing Track to Geotag Photo

1. On the main menu bar of **@trip PC**, Click  to [import GPS tracks](#).
2. After importing gps tracks, you can choose to either create a trip or start geotagging photo(s) directly. If you choose to start geotagging photo(s), you'll be prompted to add in photo(s) that need to be geotagged. Click **Next** to proceed.

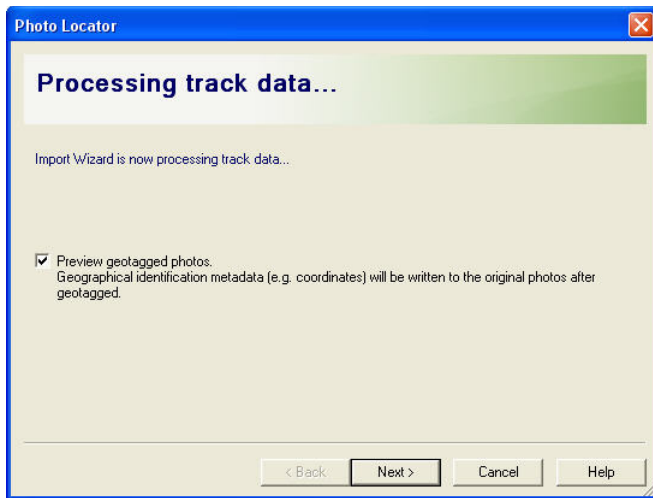


3. **Photo Locator** will automatically select corresponding tracks based on the photo(s) imported, or you may select other track(s) to import for photo geotagging. Click **Next** to proceed.



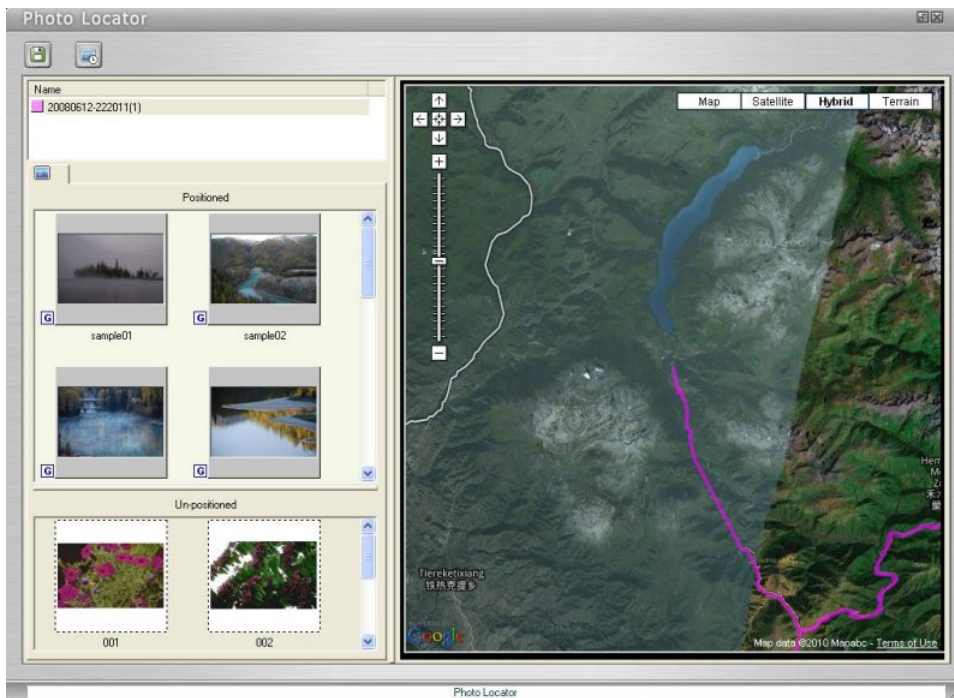
4. Click to select the option that allows you to preview the geotagged photo(s) in **Photo Locator** after processing track data if necessary. Click **Next** to proceed.





5. The geographical identification metadata will then be written to the original photo(s).

If **Preview geotagged photos** was selected in the previous step, you'll be prompted to preview geotagged photo(s) in **Photo Locator**.

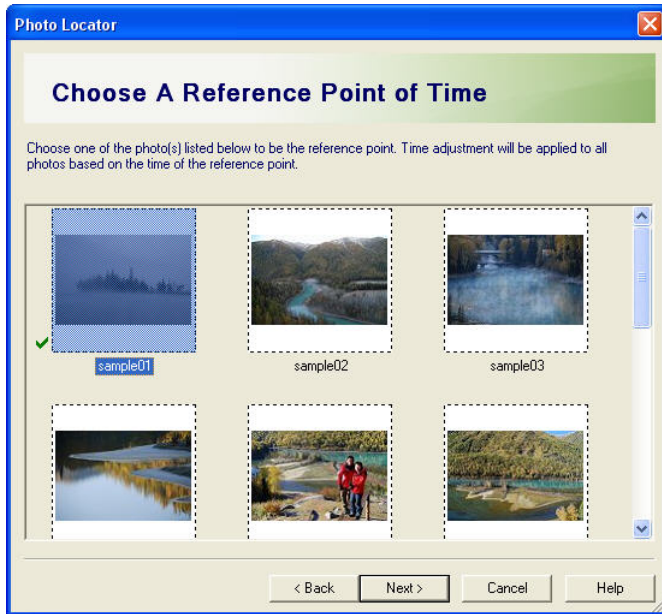


6. To further locate photo(s) on imported track, click  to launch **Photo Locator Wizard**.

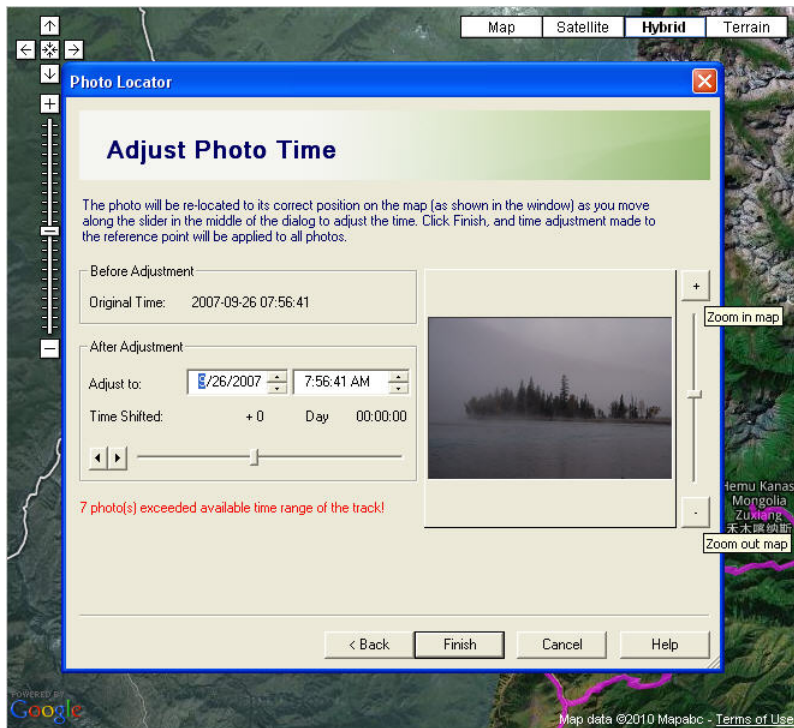
7. Select one of the options to adjust the time of all or unmatched photos.



8. Choose a photo as the reference point, based on which time adjustment will be made to the rest of the photos.




9. Use the slider bar in the middle to adjust photo time, and photos will be relocated on the map (as shown in the background window) while time adjustment is being made. Click +/- signs or drag the slider bar next to the photo frame upward/downward to zoom in/out the map in the background window. Click **Finish** to complete relocating photo(s).



10. Click  to simply exit **Photo Locator** or exit after saving changes made.

### B. Start by Launching Photo Locator




1. On the main menu bar of **@trip PC**, click  to launch **Photo Locator**.  
**Note:** Please make sure i-gotU GPS Logger is connected to PC in order to launch **Photo Locator**.
2. Add photo(s) and import track(s) as instructed, and repeat the steps described above to complete [photo locating](#).

### Next

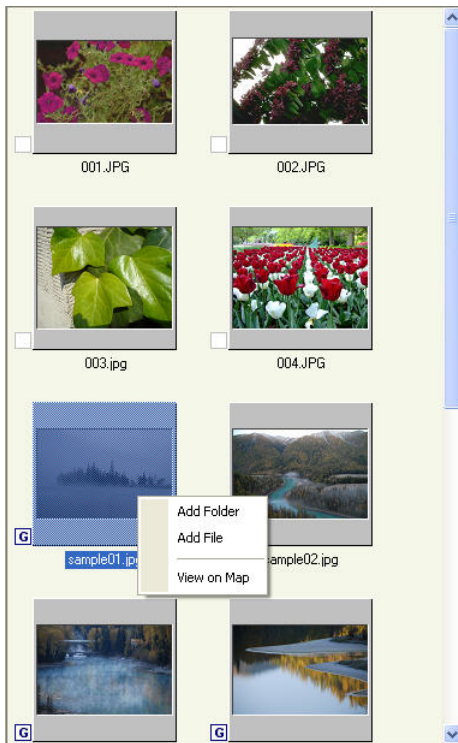
## Location Viewer

If you just want to take a quick look at the geotagged photos on the map, **Location Viewer** is exactly what you need. **Location Viewer** allows you to locate your photos on Google Maps as fast as just one-click.

### Function Menu Bar

-  **Exit:** Click to exit **Location Viewer**.
-  **Add Folder:** Click to select a folder where photo(s) are to be imported.
-  **Import Photo:** Click to import a photo.

### Photo Preview Window



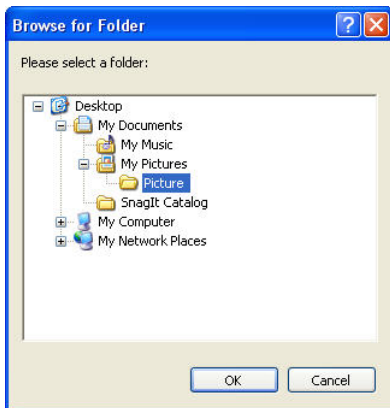
1. In the preview window, every geotagged photo is shown with a **G** sign next to it.
2. Right-click on a photo to see more options:
  - o **Add Folder**: To select a folder where photo(s) are to be imported.
  - o **Add File**: To add in image file.
  - o **View on Map**: To show this photo on Google Maps in **Location Viewer**.

**Note:** **View on Map** is only available with geotagged photo(s).

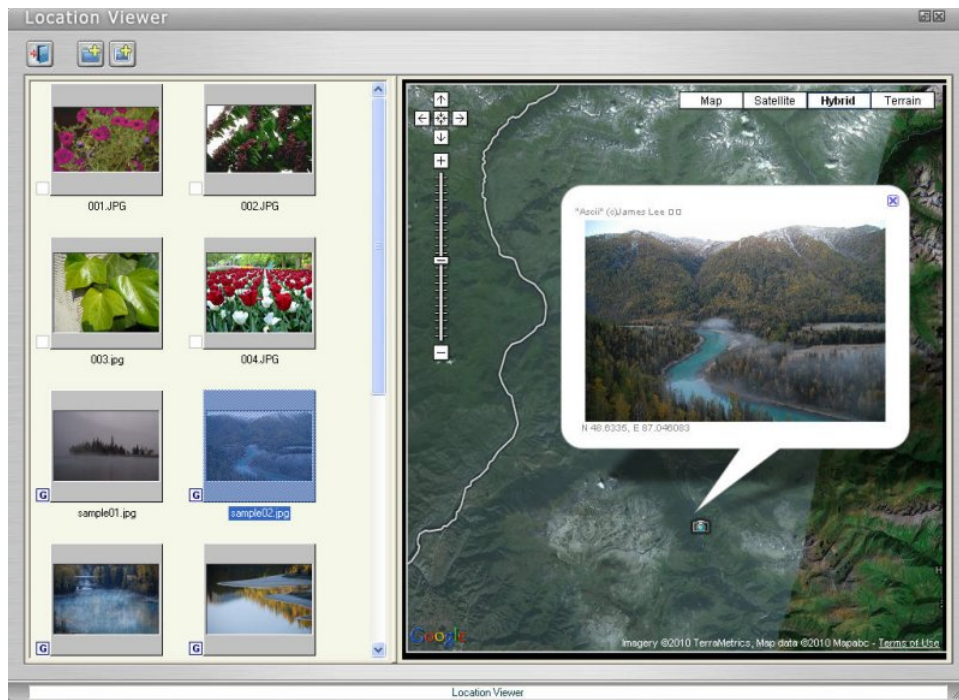
### View Geotagged Photo on Map

On the main menu bar of **@trip PC**, click  to launch **Location Viewer**.

1. Upon the startup of **Location Viewer**, please select a folder where you would like to import the photo(s) from.



2. Double-click an imported photo, and you can find it located on **Google Maps** in **Location Viewer**.



**Note:** A non-geotagged photo cannot be located on the map when double-clicked.



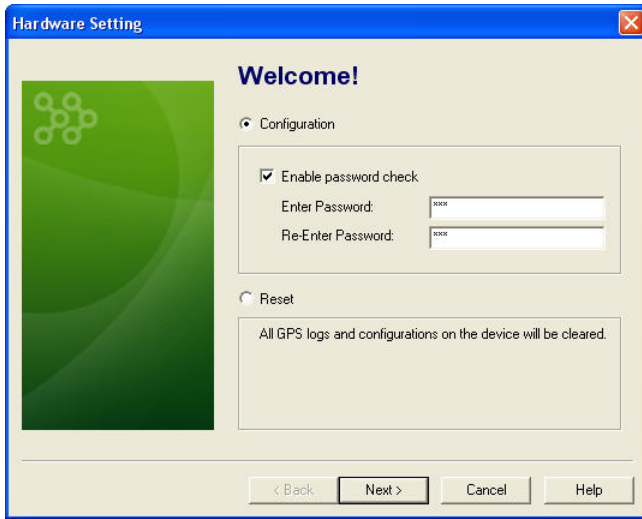
**Next**

## Hardware & Software Settings

Please follow the instructions below to configure your GPS device with @trip PC.

### Hardware Settings

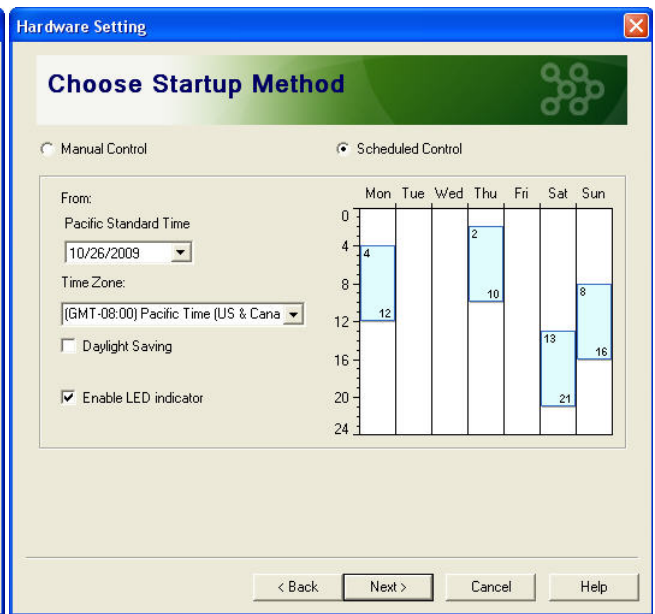
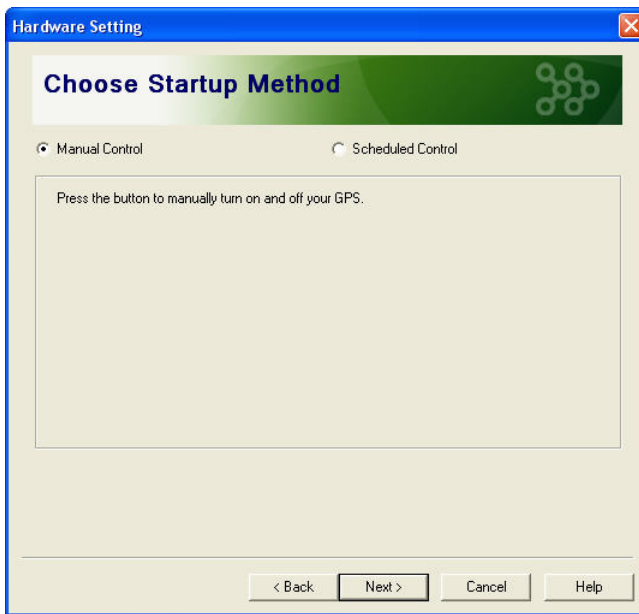
On the main menu bar of @trip PC, click  to configure your GPS device.



1. Configuration: By checking the option Enable password check, @trip PC will prompt you to enter a password for verification, whenever your GPS device is connected to PC prior to downloading GPS log data. Click **Next** to proceed with more options (continued in [Step 2](#)).

**Reset:** If this option is selected, all current GPS log data in your GPS device will be cleared. Click **Next** to start clearing data, and then exit the wizard.

2. Select Manual Control to manually turn on/off your GPS device when needed, or select Scheduled Control to have your GPS device turned on/off automatically at a scheduled time. Click **Next** to continue.

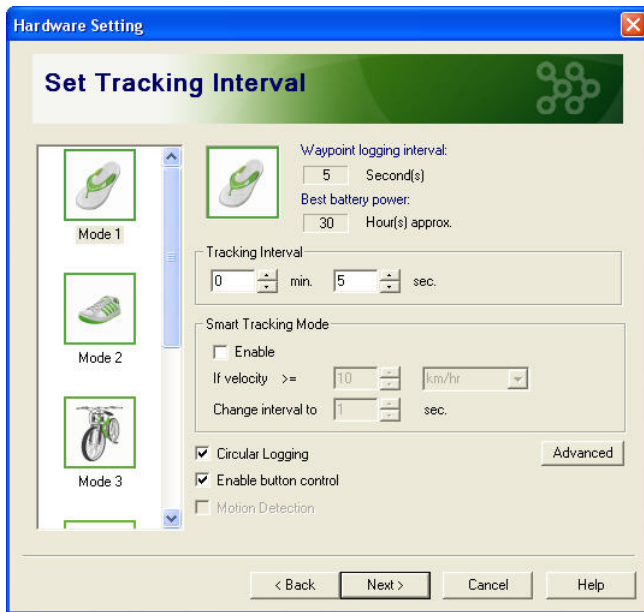


**Enable LED indicator:** LED indication is available on GPS Logger if enabled. It would otherwise save battery power and last for a longer tracking time if disabled.

**Note:**

1. The GPS device must have been successfully positioned prior to using Scheduled Control.
2. The device startup can only be scheduled twice in one day.

3. Set up tracking interval for your travel data logger at this page. Click **Next** to continue.



**Circular Logging:** When this option is enabled, the GPS logger will keep on recording trips even if the memory has reached its limits. When the memory is full, the oldest records will be overwritten as the GPS logger records on. (This feature is available in firmware version 3.05 and up.)

**Enable button control:** Button control is available on GPS Logger if enabled. It would otherwise prevent you from any unwanted action if disabled.

**Motion Detection:** When enabled, the GPS Logger will switch on automatically upon detection of motion. (This feature is only available with i-gotU GT-600.)

**Advanced:** More advanced option(s) are available for selection. (This option is only available with i-gotU GT-200e and GT-600.)

- GT-200e: Start tracking when Bluetooth enabled.
- GT-600: Auto power on upon charging (only if manual control is selected).

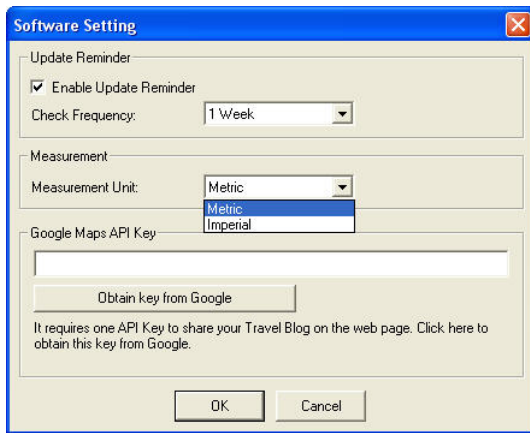
4. Hardware configuration will be complete after the Setting Wizard finishes writing configuration to the GPS device.



### Software Settings

On the main menu bar of @trip PC, click  to configure @trip PC.

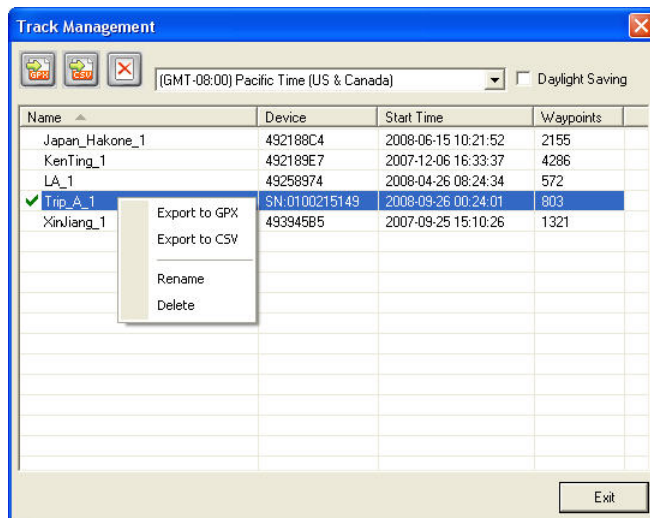
1. **Update Reminder:** Select this option to determine how often you would like to check the latest updates about @trip PC program.
2. **Measurement:** Select either Imperial or Metric as your measurement unit for GPS logging.
3. **Google Maps API Key:** In order to share your Travel Blog on the web page, an API key is required. Click Obtain key from Google to get an API key from Google.





**Next**


## Track Management

On the main menu bar of @trip PC, click  to manage all imported tracks.



 **Export to GPX:** Export selected track(s) to a GPX file by clicking the icon or right-clicking any of the listed tracks.

 **Export to CSV:** Export selected track(s) to a CSV file by clicking the icon or right-clicking any of the listed tracks.

 **Delete:** Delete selected track(s) by clicking the icon or right-clicking any of the listed tracks.

**Next**

## Compatible Hardware

@trip PC is compatible with most of the GPS logging devices in current markets. As long as your GPS logging device is capable of generating standard gpx files, you can upload and share every trip logged in your GPS device to [@trip Service](#) through @trip PC program easily and hassle-free.

**Next**