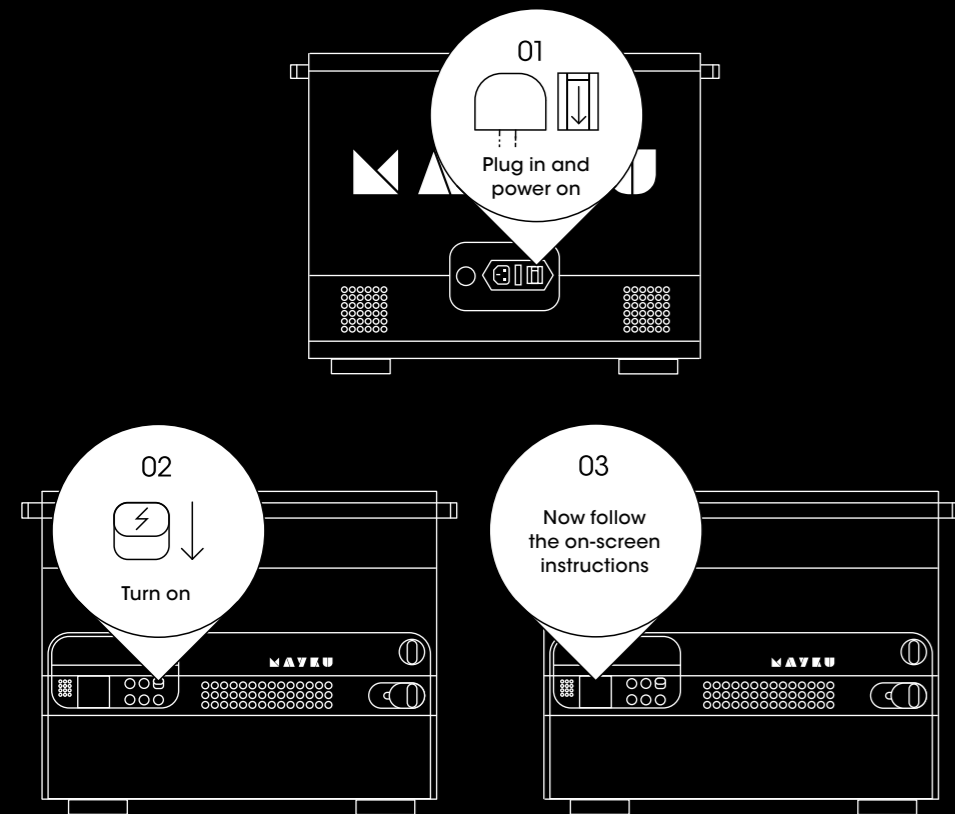
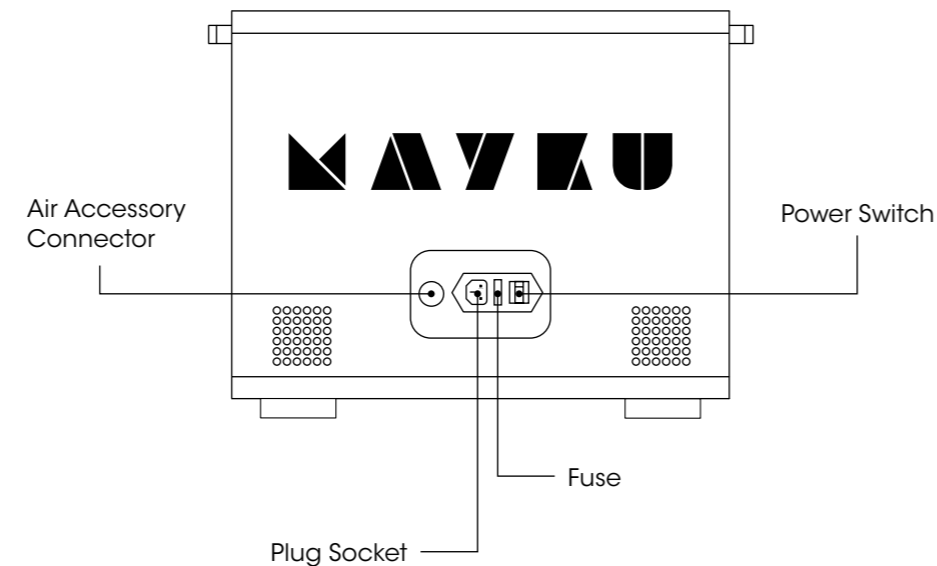


Quick Start Guide:

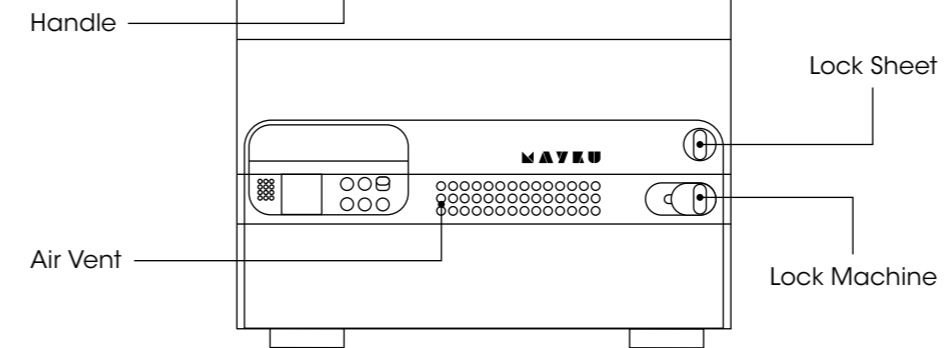


Get to know The Multiplier

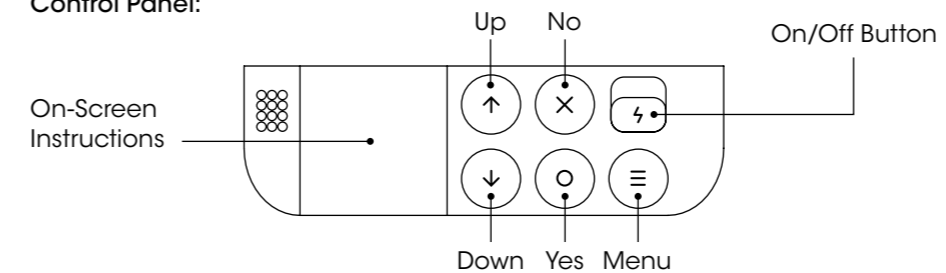
Back:



Front:

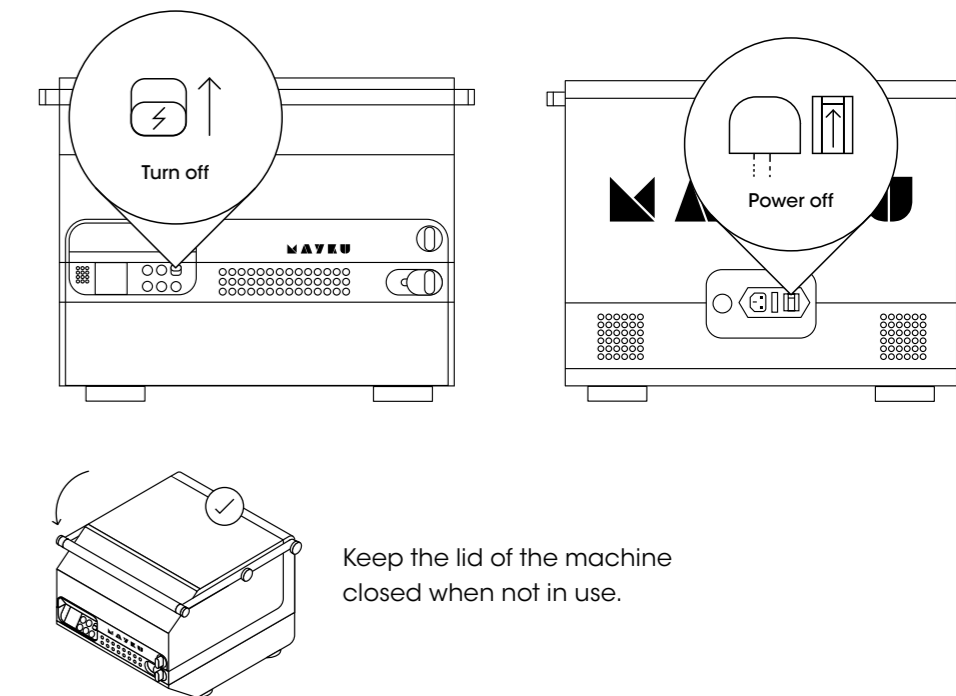


Control Panel:



Switching off your machine

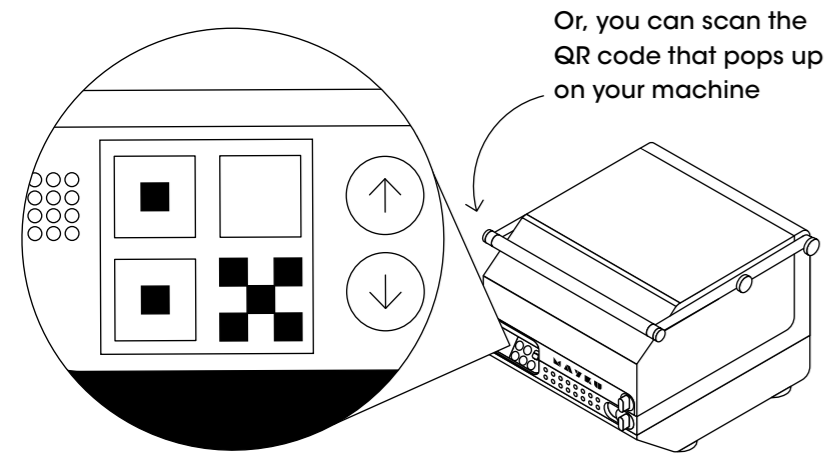
Switch your machine off using the power switch on the control panel and the mains switch on the back of the machine when not in use.



Why scan the QR code?

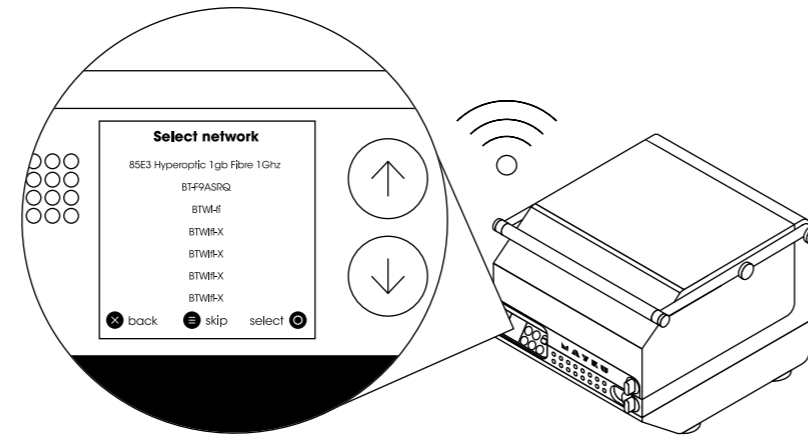
Scan the QR code on the front of this leaflet to activate your warranty and gain access to the Multiplier Academy — your community hub of resources, projects and personalised help to get the most out of your Multiplier.

You can also register any time by visiting platform.mayku.me and entering the 20 digit serial number on the back of your machine.



Why connect to wifi?

The Multiplier can be updated wirelessly over wifi. This means we can add new material profiles, new functions and new accessories to your machine over time without you having to do anything.



→ For more information about your Multiplier, visit platform.mayku.me

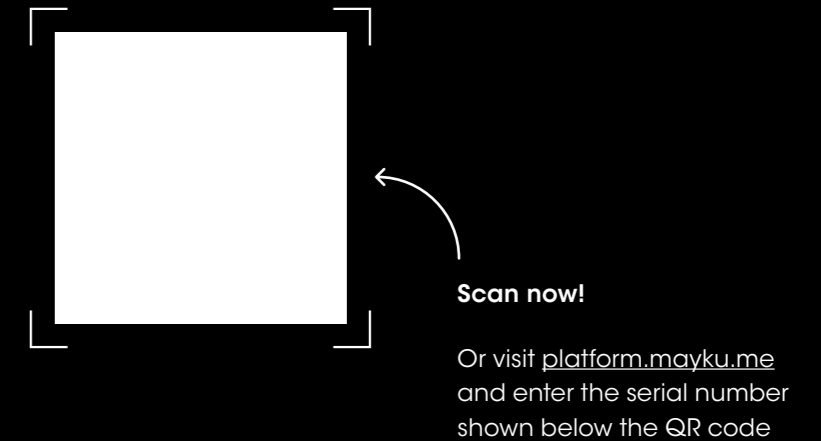
Looking after your machine

We recommend keeping your machine clean, and wiping down surfaces with a microfibre cloth regularly to avoid any build up of dust and residue material.

We'll also send you reminders via the screen on your Multiplier to drain the tanks in your machine. Water is drawn from the atmosphere around it when compressing the air, so it's important to do this when you are reminded to, in order to keep your machine running smoothly.

→ Follow our step-by-step video guide to learn how best to look after your Multiplier at maintenance.mayku.me

→ Need any assistance setting up your machine? Visit multiplierhelp.mayku.me



Activate your machine.