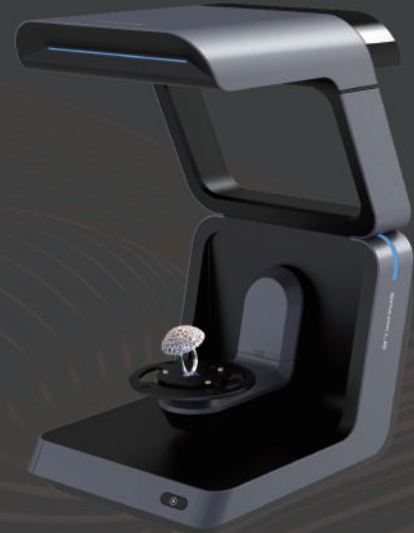


Technical Specifications

Model	AutoScan Sparkle
Scanning Area	100*100*75 mm
3D Scanning Principle	Structured light 3D scanning
Accuracy	≤10 μm
Rotation Axis	3 Axis
Camera Resolution	2x5.0MP
Weight	7.5kg
Working Temperature	10°C ~ 30°C
Power	DC24V
Output Format	STL
O/S	Windows 10, 64 bits
Light Source	Blue Light



Notice: SHINING 3D reserves the right to explain any alteration of the specifications and pictures.



Visit us

UAE Office:
701, Wasl Business Center, Port Saeed,
Deira, Dubai, United Arab Emirates
P.O. Box 98617

KSA Office:
A. Shifa Area, Al-Mussa Industrial Area,
Al-Nasser Street cross Hayel Road, Riyadh,
Kingdom of Saudi Arabia

Contact us

UAE Office:
+971 4 251 7734

KSA Office:
+966 545 823123

Email
info@maptec.ae

Website
www.maptec.ae