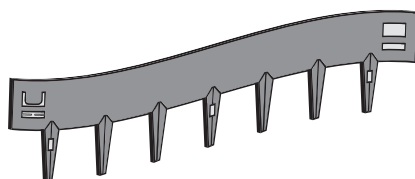


CORE EDGE

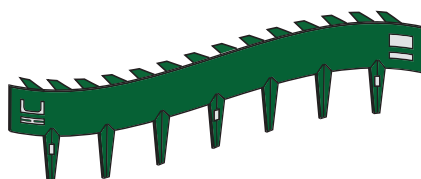
THE RANGE

FLEXIBLE EDGE



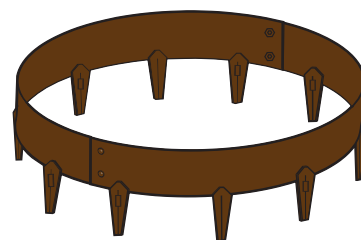
Perfect for deliniating lawns, flowerbeds, pathways & generally creating borders anywhere in your garden.

ARTIFICIAL GRASS EDGE



Specifically designed for use with artificial grass, the welded tabs provide the perfect fixing solution and also help to secure underlay.

TREE RING

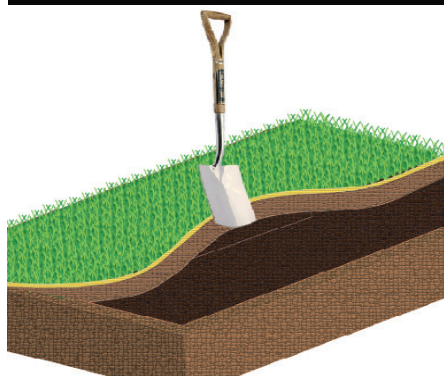


Our tree rings come pre-rolled meaning a perfect circle is easily achievable. We offer a 600mm or 900mm diameter ring.

INSTALLATION

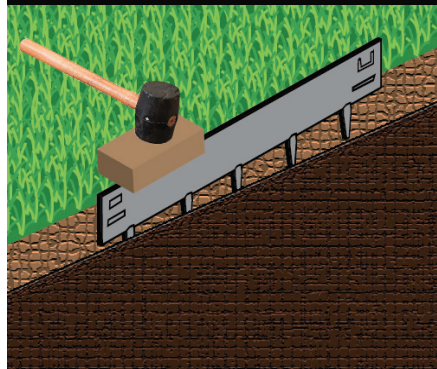


STEP 1



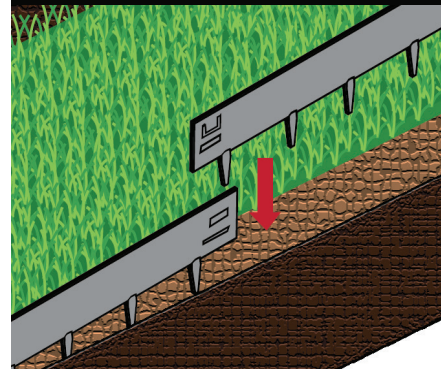
Using a hose or rope, make a guide for your edging to follow. If the ground is relatively soft you're good to go. If not, you may need to loosen the ground with a flat spade or pickaxe to ensure the edging can be installed without difficulty.

STEP 2



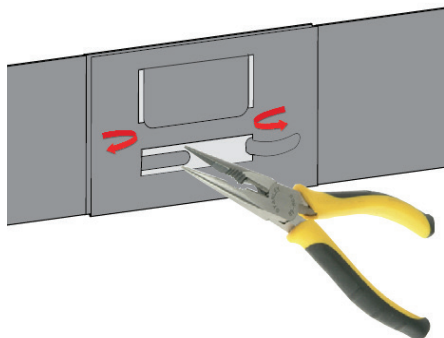
Starting at one end, tap the edging down using a wooden block and mallet. Ensure the edging remains vertical as it is driven into the ground, this prevents twisting when it comes to installing your next edging.

STEP 3



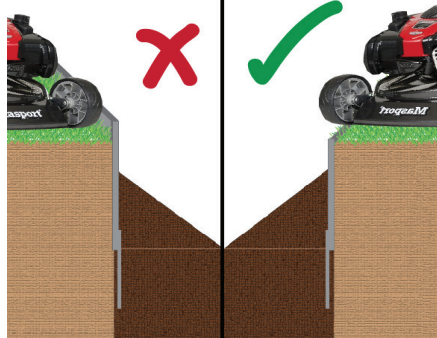
Before driving the whole edging into the ground connect the next edging. Try to maintain a continuous line along the top of the edgings when tapping them into the ground to prevent the connections from coming apart.

STEP 4



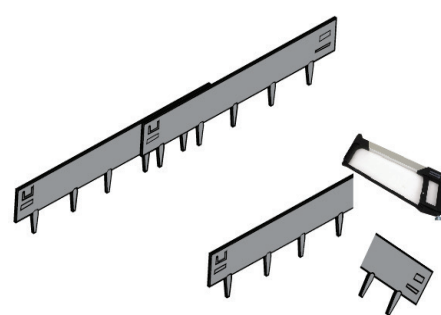
Connect the edgings by sliding the large tab on one edging down through the slit on the adjacent edging. Using a pair of thin nosed pliers, pull both thin tabs through the slit provided and rotate them back on themselves.

STEP 5



If using the edging on a lawn area the top of the edging should be flush with the soil to prevent the lawn mower blade making contact with the top of the edging.

STEP 6



If you have an edging that is too long, you can either overlap the last joint or cut the edging using a hacksaw. Be sure to use a metal file to smooth over the cut end and we recommend applying a metal primer paint to prevent rusting.