



QUICK
START
GUIDE

YOUR COLD DAY IN THE SUMMER
www.acjhs.com

QUICK START GUIDE

WINDOW KIT INSTALLATION

This window slider kit has been designed to fit most standard "Vertical" and "Horizontal" window applications; however, it may be necessary for you to improvise / modify some aspect of the installation procedures for certain types of window.

Minimum and maximum window openings:

MAXIMUM: 57" (145 cm)

MINIMUM: 9" (23cm)

NOTE:

- Adjust to desired length and use provided metal wing nuts and bolts to secure.
- If the window opening is less than 18" the minimum length of the Panel A, cut A with a hole in it short to fit for the window opening.
- Never cut out the hole in Panel A

For a 9"-18" window opening, use panel A (Cut short if necessary)



For a 19"-38" window opening, use panel A+B (Cut short A if necessary)



For a 39"-57" window opening, use panel A+B+C



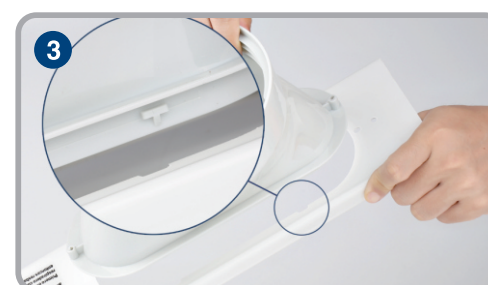
CONNECT HOSE TO WINDOW KIT



Stretch the vent hose 6inch(15CM) to facilitate the installation of the exhaust nozzle.



Rotate the vent hose into the exhaust nozzle A counterclockwise, and check to see that it are fastened securely to the hose.



Slide it for locking.



Insert hose outlet into the window panel A fully.



If you want fix the connection more firmly, use the type A serew.