



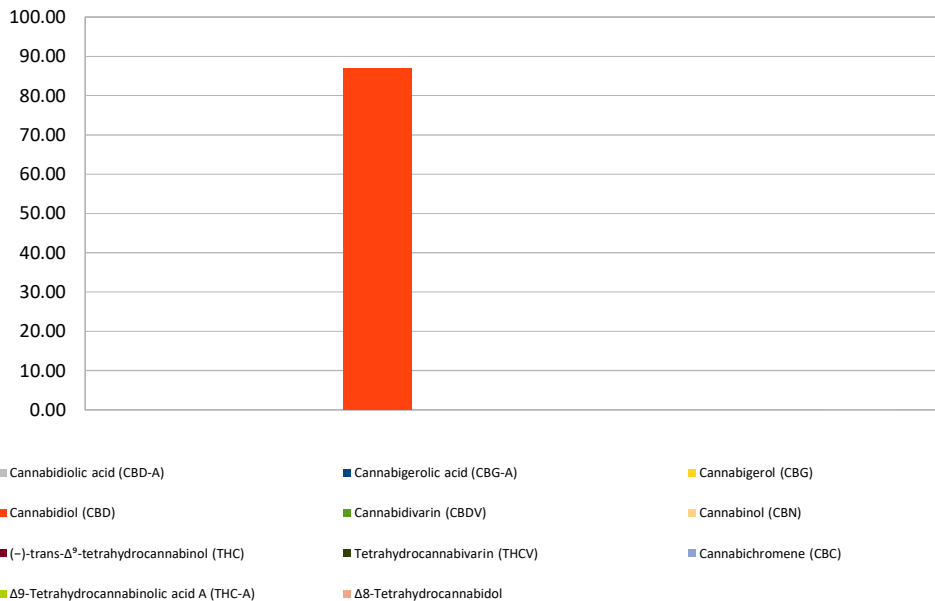
# Cannabinoid Profile

**Customer:** Americas Finest CBD  
**Customer Sample ID:** 50 mg soft gel BCHA 129  
**Laboratory Number:** 201901-0112  
**Extraction Technician:** CB  
**Analytical Chemist:** MF

Extraction Date(s):	Analysis Date(s)
1/4/2019	1/4/2019

Cannabinoid (HPLC)		Results	
	LOD (mg/g)	Percent	mg/g
Δ8-Tetrahydrocannabinol		0.02%	0.18
Cannabidiolic acid (CBD-A)	<0.2		
Cannabigerolic acid (CBG-A)	<0.2		
Cannabigerol (CBG)	<0.2		
Cannabidiol (CBD)		8.69%	86.88
Cannabidivarin (CBDV)	<0.2		
Cannabinol (CBN)	<0.2		
(-)-trans-Δ <sup>9</sup> -tetrahydrocannabinol (THC)	<0.2		
Tetrahydrocannabivarin (THCV)	<0.2		
Cannabichromene (CBC)	<0.2		
Δ9-Tetrahydrocannabinolic acid A (THC-A)	<0.2		
Cannabinoids Total		Percent	mg/g
<b>Max Active THC</b>		<b>0.00%</b>	<b>0.00</b>
<b>Max Active CBD</b>		<b>8.69%</b>	<b>86.88</b>
<b>T. Active Cannabinoids</b>		<b>8.71%</b>	<b>87.06</b>
<b>Total Cannabinoids</b>		<b>8.71%</b>	<b>87.06</b>
Ratios			
<b>NA CBD to THC</b>		<b>0.00 :1 THC to CBD</b>	

Cannabinoid (mg/g)



Altitude Consulting, LLC utilizes NIST traceable Reference Standards and Certified Reference Material to calibrate analytical instruments along with proven analytical methods. The methods are applied in the most ethical manner following good laboratory practice guidelines. The results of this report are based solely on the sample submitted and cannot be reproduced.



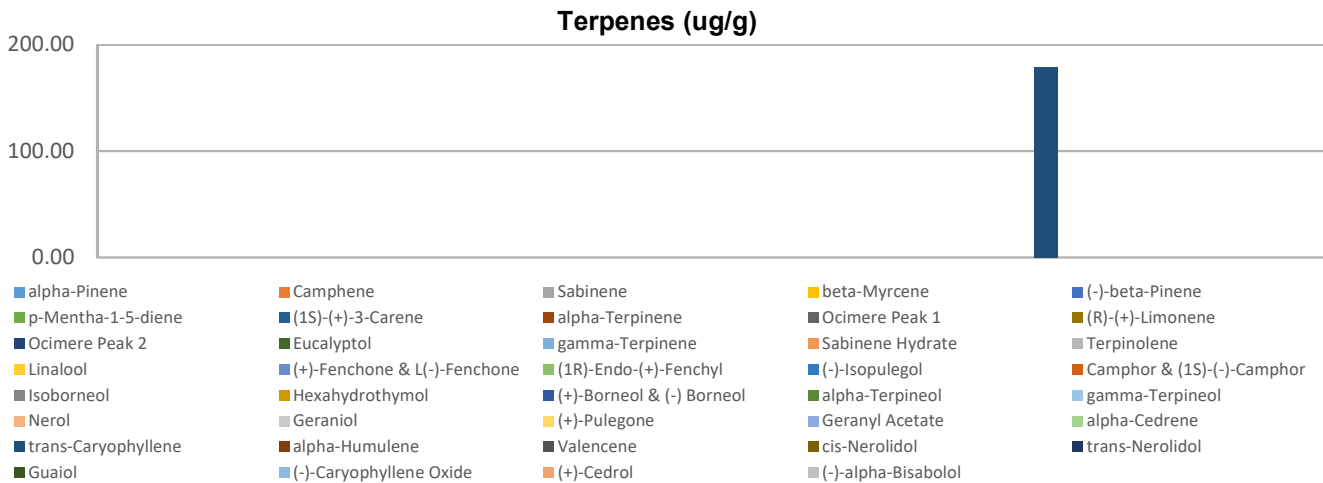
# Terpenes Profile

**Customer:** Americas Finest CBD  
**Customer Sample ID:** 50 mg soft gel BCHA 129  
**Laboratory Number:** 201901-0112  
**Extraction Technician:** CB  
**Analytical Chemist:** MF

Extraction Date(s)	Analysis Date(s)
1/4/2019	1/4/2019

Terpene	Results	Terpene	Results
	ug/g		ug/g
alpha-Pinene		Isoborneol	
Camphene		Hexahydrothymol	
Sabinene		(+)-Borneol & (-) Borneol	
beta-Myrcene		alpha-Terpineol	
(-)-beta-Pinene		gamma-Terpineol	
p-Mentha-1-5-diene		Nerol	
(1S)-(+)-3-Carene		Geraniol	
alpha-Terpinene		(+)-Pulegone	
Ocimere Peak 1		Geranyl Acetate	
(R)-(+)-Limonene		alpha-Cedrene	
Ocimere Peak 2		trans-Caryophyllene	178.81
Eucalyptol		alpha-Humulene	
gamma-Terpinene		Valencene	
Sabinene Hydrate		cis-Nerolidol	
Terpinolene		trans-Nerolidol	
Linalool		Guaiol	
(+)-Fenchone & L(-)-Fenchone		(-)-Caryophyllene Oxide	
(1R)-Endo-(+)-Fenchyl		(+)-Cedrol	
(-)-Isopulegol		(-)-alpha-Bisabolol	
Camphor & (1S)-(-)-Camphor			

Empty result indicates data is less than detection limit. Reporting Limit is roughly 40 ug/g depending on amount extracted.



Altitude Consulting, LLC utilizes NIST traceable Reference Standards and Certified Reference Material to calibrate analytical instruments along with proven analytical methods. The methods are applied in the most ethical manner following good laboratory practice guidelines. The results of this report are based solely on the sample submitted and cannot be reproduced.