

Summit Cable Maintenance

The Summit uses a brake cable as part of the tilt mechanism. This cable may require maintenance, like a brake cable on a bike.

Accessing the cable

Step 1

Remove the main rack assembly from the draw bar.

Step 2

Make a note (take a picture) of how far the gas shock is threaded into the gas shock holder at the back of the assembly. You'll need to know this when it's time to re-thread and allow the cam bar to set in place.



Step 3

Using a 5 mm Allen wrench, remove the two screws (one on either side) that connect the gas shock to the mast assembly at the end that would be closest to the vehicle.



Step 4

Remove the gas shock by unthreading it (turn counter-clockwise).



Step 5

Using a 2.5 mm Allen wrench, loosen the set screw that holds the cable on the silver cam bar.



Tightening the cable

Step 1

With the set screw loosened, pull the cable tight, re-wrap the cable under the set screw (use pliers if necessary), and tighten the set screw.



Step 2

Replace the gas shock by threading it into place as far as it was originally threaded.

Step 3

Using a 5 mm Allen wrench, replace the two screws (one on either side) to connect the gas shock to mast assembly.

Replacing the cable

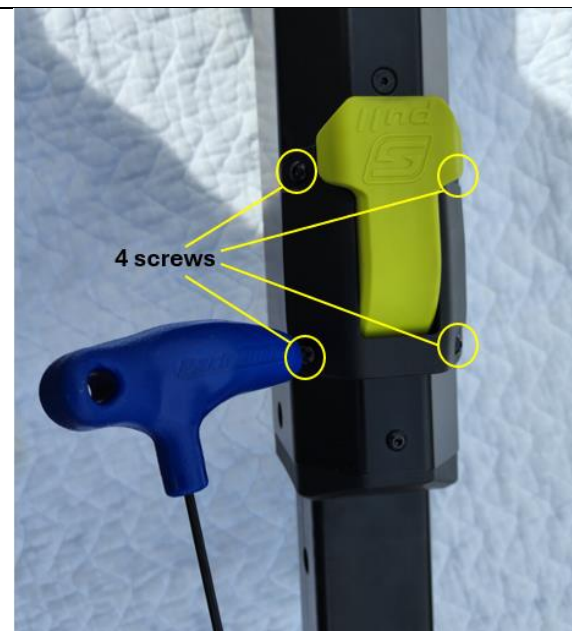
Step 1

With the set screw loosened, remove the broken cable section.



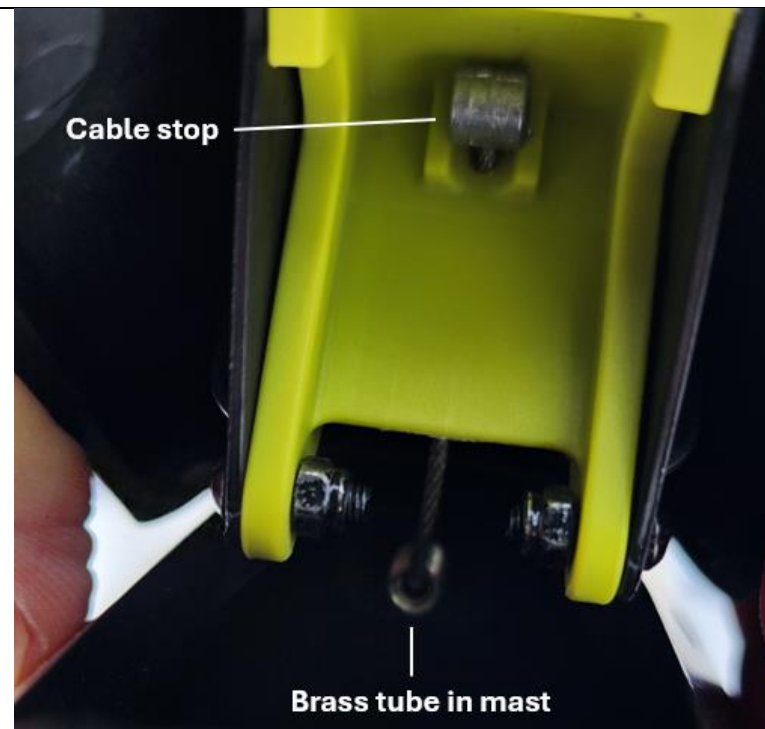
Step 2

Using a 2.5 mm Allen wrench, remove the four screws that attach the cam lever to the mast assembly.



Step 3

Remove the cable from the cam lever by pulling the cable stop.

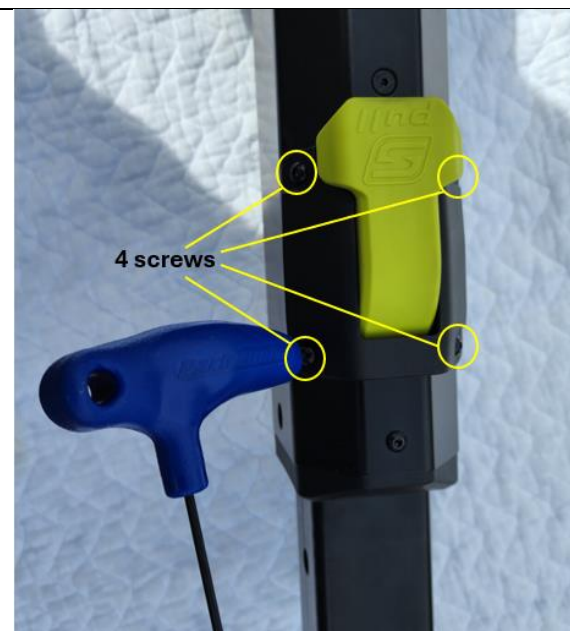


Step 4

Thread the new cable through the green cam lever and into the brass tube of the mast. The cable will protrude through the silver cam bar at the base of the mast assembly.

Step 5

Replace the cam lever and four screws on the mast assembly. This must be done before tightening the cable.



Step 6

Tighten the cable by pulling it tight through the silver cam bar, wrapping it around the set screw and tightening the set screw.

**Step 7**

Replace the gas shock by threading it into place as far as it was originally threaded.

Step 8

Using a 5 mm Allen wrench, replace the two screws (one on either side) to connect the gas shock to mast assembly.