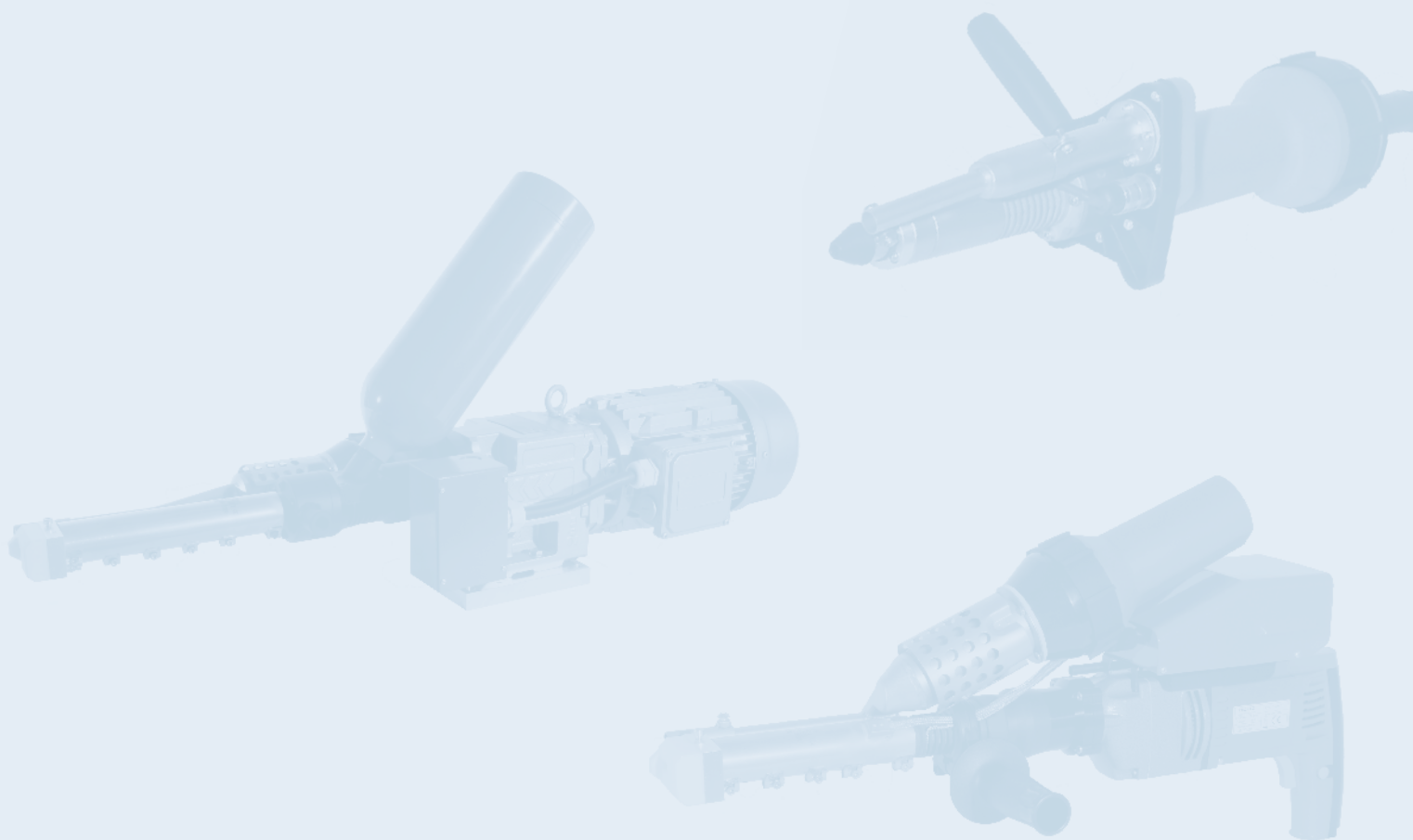


HEAT ON

Plastic welding extruder and industrial extruder



BAK

www.bak-ag.com 

BAK Thermoplastic
Welding Technology AG

Industriestrasse 6
6064 Kerns / Switzerland

E-Mail info@bak-ag.com

Telefon +41 (0)41 661 22 50
Fax +41 (0)41 661 22 51

HEAT ON

- With brushless pre-heater.
- The thermocouple is located inside the mass barrel on the outlet, this guarantees a real temperature control and read out.
- Cold start protection by mass and air temperature.
- Every type is available with a revolving head (360°) with integrated preheat nozzle to weld in any direction.
- No wear parts on the rod feed system.

For more information visit our website

www.bak-ag.com

We develop individual tool types, especially suited for your application.



View front panel ExOn 2-3.



Integrated tool stand for ExOn 1-3.



All the extruder are also available for external air supply on request.

Hand welding extruder

MICRO

Small,
light,
unique

- for welding of PE, PP, PVDF and PVC
- separated air and mass temperature control
- internal air supply built-in in the control box
- brushless motor for drive and blower



Worldwide the smallest and lightest hand held extrusion welder. Extruder weight only 2,3 kg, output up to 0,5 kg/h.

Technical Data

Voltage	V	230
Frequency	Hz	50/60
Power consumption	W	1300
Output with HDPE material	kg/h	0,1-0,5
Welding consumable	mm	3 and 4 round
Size Extruder (l x w x h)	mm	410 x 75 x 100
Size control box (l x w x h)	mm	530 x 210 x 410
Weight extruder	kg	2,3
Weight control box	kg	20 with 5 m cord
Protection class I		⊕
Markings		CE

Hand welding extruder

EXON 1/2

ExOn 1***



ExOn 2



ExOn1 A*



ExOn 2A*



Type		ExOn 1	ExOn 1A	ExOn 2	ExOn 2A
Voltage	V	230 or 120	230 or 120	230	230
Frequency	Hz	50/60	50/60	50/60	50/60
Power consumption	W	2640	2320	3600	3100
Output with HDPE material	kg/h	max. 1,2	max. 1,2	max. 2	max. 2
Welding consumable	mm	3 and 4 round	3 and 4 round	4 or 5** round	4 or 5** round
Size (l x w x h)	mm	500 x 100 x 340	500 x 100 x 340	560 x 120 x 350	560 x 120 x 350
Weight	kg	5	5	7	7
Pre-heater		brushless	brush	brushless	brush
Welding materials		PE, PP, PVDF, PVC	PE, PP	PE, PP, PVDF, PVC	PE, PP
Protection class I		⊕	⊕	⊕	⊕
Markings		CE	CE	CE	CE

* air heated hand welding extruder

** indicate on order

*** on request also available with digital read out of the air temperature.

Hand welding extruder

EXON 3/5/6

ExOn 3



ExOn 5



ExOn 3A *



ExOn 6



Type		ExOn 3	ExOn 3A	ExOn 5	ExOn 6
Voltage	V	230	230	230 oder 400	230 oder 400
Frequency	Hz	50/60	50/60	50/60	50/60
Power consumption	W	3700	3600	5300	5300
Output with HDPE material	kg/h	max. 3	max. 3	max. 5	max. 6
Welding consumable	mm	4 or 5** round	4 or 5** round	5 round	pellets
Size (l x w x h)	mm	650 x 120 x 360	650 x 120 x 360	660 x 126 x 448	660 x 126 x 365/600
Weight	kg	8	8	11	12
Pre-heater		brushless	brush	brushless	brushless
Welding materials		PE, PP, PVDF, PVC	PE, PP	PE, PP	PE, PP
Protection class I		⊕	⊕	⊕	⊕
Markings		CE	CE	CE	CE

* air heated hand welding extruder

** indicate on order

Heated hose extruder

HS28

Unique,
powerful,
user-friendly

- highest performance
- flexible use due to mobile control box
- brushless motor
- easy operation



The heated hose extruder with the highest welding performance (12 kg/h) on the market. Easy handling due to light weight of the welding head (approx. 6 kg)

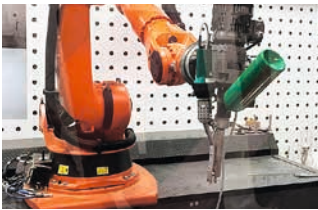
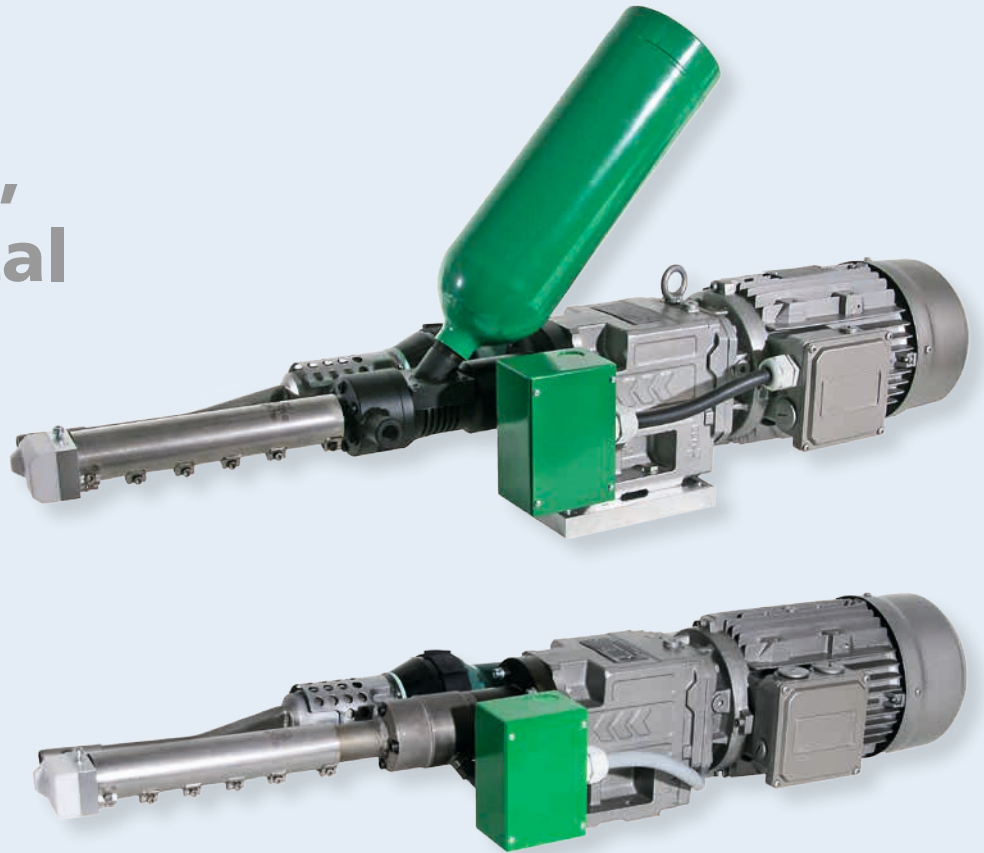
Technical data

Voltage	V	3 x 400
Frequency	Hz	50/60
Power consumption	W	11 000
Output	kg/h	max. 12
Welding consumable		pellets
Size (l x w x h)	mm	1040 x 600 x 660
Weight	kg	210
Protection class I		⊕
Markings		CE

EXON 7/8

Reliable,
fail-proof,
economical

- for automated welding
- for 3D-printing
- for mounting on robot arms
- easy construction



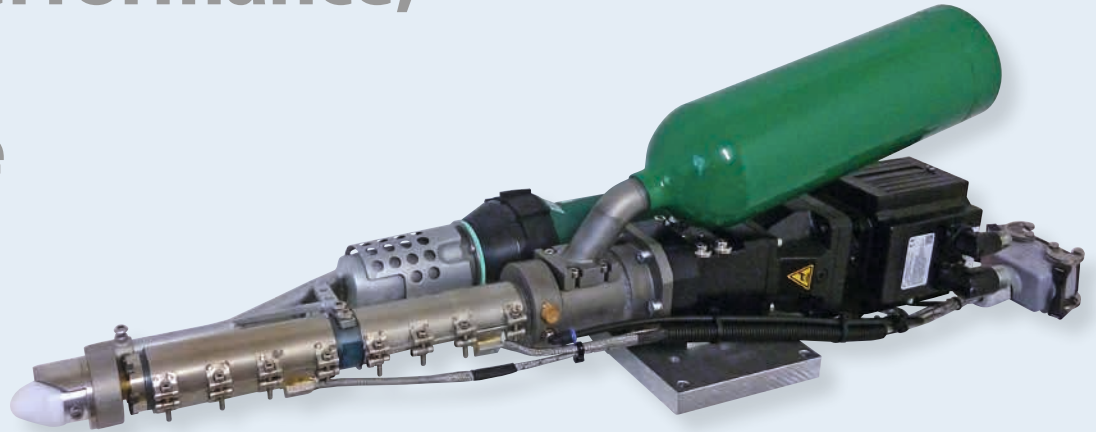
The user-friendly and economic industrial extruders to build into machines or to mount on robot arms.

Technical data		ExOn 7	ExOn 8
Voltage	V	3 x 400	3 x 400
Frequency	Hz	50/60	50/60
Power consumption	W	6000	6000
Output	kg/h	max. 5	max. 6
Welding consumable		5 round	pellets
Size (l x w x h)	mm	846 x 267 x 242	852 x 267 x 242 / 430
Weight	kg	40	42
Protection class I		⊕	⊕
Markings		CE	CE

Optional: external control

EXON 10

High performance,
light,
flexible



- for automated welding
- for 3D-printing
- for mounting on robot arms and simple axis systems
- 2 heating zones
- feeder cooling possible
- mounting position variable



The flexible industrial extruder for the work on PE, PP, PVC, TPU, TPE, ABS, PMMA, PA, PC, PET, PLA and many more materials.

Technical data

Voltage	V	3x400
Frequency	Hz	50/60
Power consumption	W	5000
Output	kg/h	max. 6
Welding consumable		pellets
Size without preheating (l x b x h)	mm	800 x 300 x 250
Size with preheating (l x b x h)	mm	820 x 300 x 250
Weight with/without preheating	kg	19/22
Protection class I		⊕
Markings		CE

Optional:

- external control with analogue signal
- external control with common fieldbus systems
- nozzle with swerve knife for the cutting of the extrudate
- feeding for welding rod (2x5 mm round) PP and PE

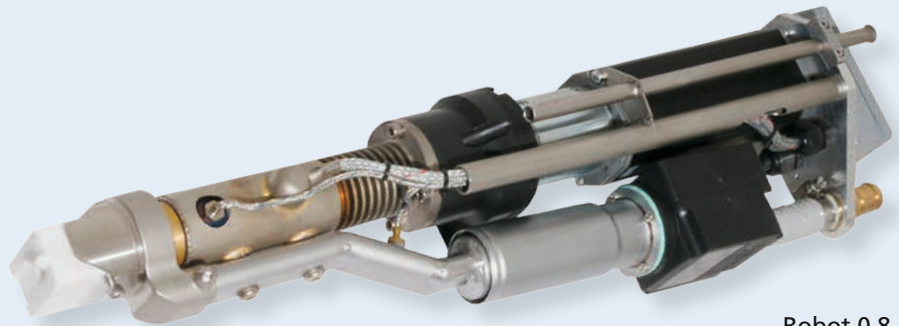
ROBOT

Small,
universal,
innovative

- for automated welding
- for 3D-printing
- light weight
- easy control



Robot 0,4
without preheating



Robot 0,8
with preheating



The small and flexible extruder line to build into automation plants for 3D-printing and plastic welding.

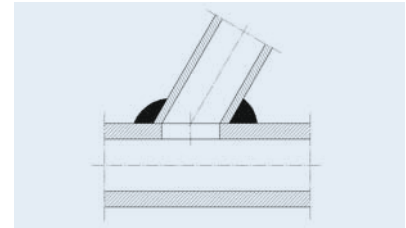
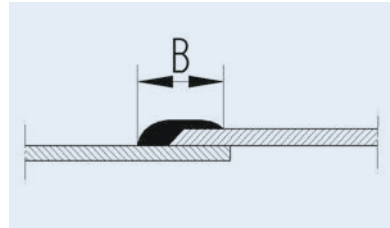
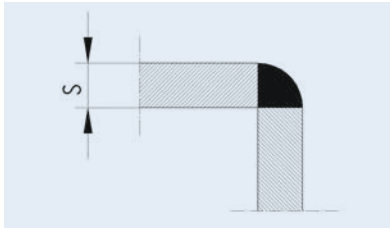
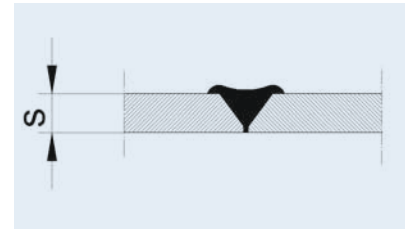
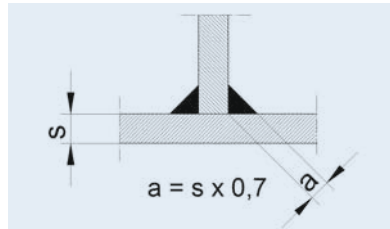
Technical data		Robot 0,4 w/o preheating*	Robot 0,8 w/o preheating	Robot 0,8 with preheating
Voltage	V	230	230	230
Power consumption	W	1500	800	3000
Output	kg/h	max. 0,4	max. 0,8	max. 0,8
Welding consumable		4 round	4 round	4 round
Size (l x w x h)	mm	370 x 100 x 120	540 x 120 x 100	540 x 120 x 180
Weight	kg	2,2	4,9	6,5
Protection class I		⊕	⊕	⊕
Markings		CE	CE	CE

Optional: external control

* Version with preheating on request

ACCESSORIES

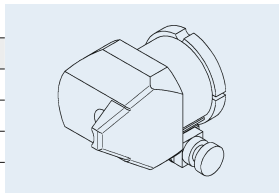
Welding shoe calculation



Types Micro/Robot 0,4

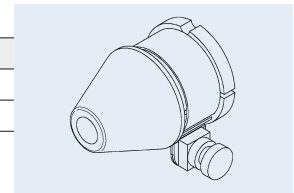
Welding shoe fillet seam

Order no.	sheet thickness (mm)
D-1175	3-4
D-1176	5-6
D-1177	8
D-1178	10



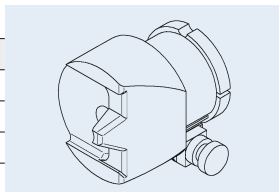
Welding shoe round

Order no.	
D-1183	∅ 7 mm
D-1184	∅ 9 mm



Welding shoe V-seam

Order no.	sheet thickness (mm)
D-1179	3-4
D-1180	5-6
D-1181	8



Nozzle with tacking tip

Order no.	
D-1185	



Nozzle

Order no.	
D-1459	∅ 6 mm
D-1463	∅ 9 mm



Types ExOn 1–8

Transport case (metal)

Order no.

D-0965	Type ExOn 1
D-1644	Type ExOn 2–3
D-1799	Typ ExOn 3A
D-1041	Type ExOn 5–6



Revolving head

Order no.

DX321	Type ExOn 2
DX323	Type ExOn 3
DX325	Type ExOn 5–8



Revolving head, 45° angle

Order no.

DX326	Type ExOn 2
DX327	Type ExOn 2A
DX328	Type ExOn 3
DX330	Type ExOn 5–8



Revolving head, 90° angle

Order no.

DX331	Type ExOn 2
DX332	Type ExOn 2A
DX333	Type ExOn 3
DX335	Type ExOn 5–8

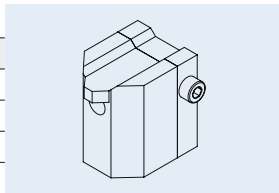


Welding shoes types ExOn 1/1A

Fillet seam

Order no. sheet thickness (mm)

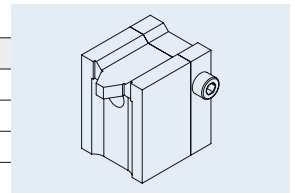
D-0827	5–6
D-0828	8
D-0829	10
D-0830	12
D-1039	15



V-seam

Order no. sheet thickness (mm)

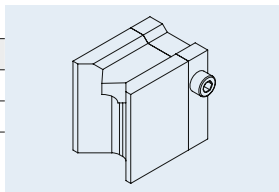
D-0831	5–6
D-0832	8
D-0833	10
D-0834	12



Corner seam

Order no. sheet thickness (mm)

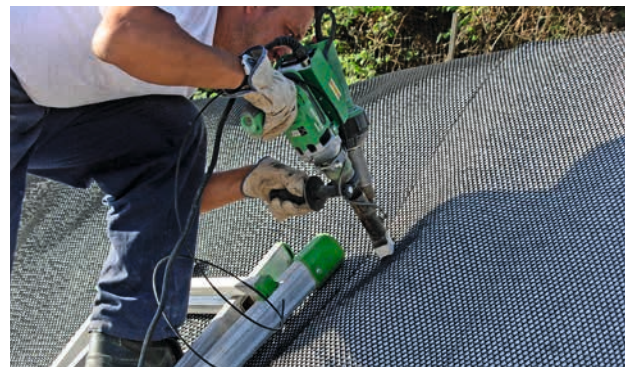
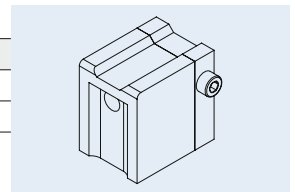
D-0837	5–8
D-0838	10–12



Overlap seam

Order no. seam width (mm)

D-0835	20
D-0836	25



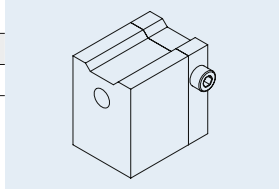
ACCESSORIES

Welding shoes types ExOn 1/1A

Unshaped

Order no.

D-0842	lxw 30x40 mm
--------	--------------



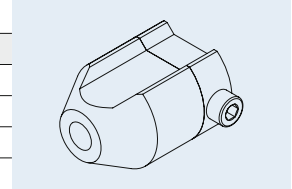
Round

Order no.

D-0839	∅ 10 mm
--------	---------

D-0840	∅ 15 mm
--------	---------

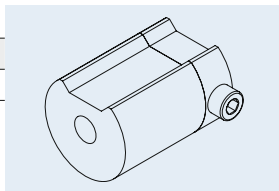
D-0841	∅ 20 mm
--------	---------



Unshaped round

Order no.

D-0843	∅ 30 mm
--------	---------



Welding shoes types ExOn 2-10/Robot 0,8

Fillet seam

Order no. sheet thickness (mm)

D-0174	5-8
--------	-----

D-0175	10-12
--------	-------

D-0177	15
--------	----

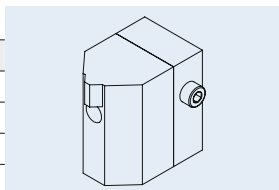
D-0178	20
--------	----

D-0179	25
--------	----

D-0180	30
--------	----

D-0181	35
--------	----

D-0182	40
--------	----



Corner seam

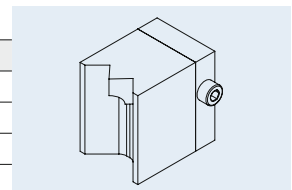
Order no. sheet thickness (mm)

D-0195	5-8
--------	-----

D-0196	10
--------	----

D-0197	15
--------	----

D-1221	20
--------	----



Overlap seam

Order no. seam width (mm)

D-1189	20
--------	----

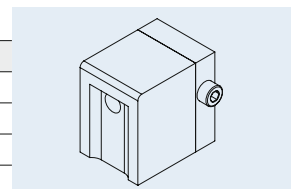
D-0192	25
--------	----

D-0193	30
--------	----

D-0194	35
--------	----

D-0599	40
--------	----

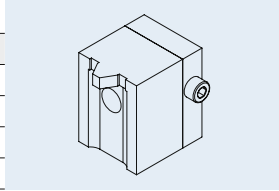
D-1223	45
--------	----



Welding shoes types ExOn 2-10/Robot 0,8

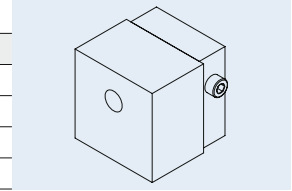
V-seam

Order no.	sheet thickness (mm)
D-0906	5-6
D-0183	8
D-0184	10
D-0185	12
D-0186	15
D-0187	20
D-0188	25
D-0189	30
D-0190	35
D-0191	40



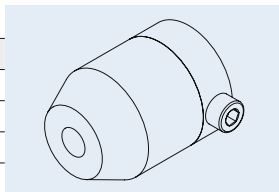
Unshaped

Order no.	lxw	mm
D-0223	45x30	
D-0224	50x40	
D-0225	45x45	
D-1237	45x50	
D-0247	60x70	
D-0248	70x80	



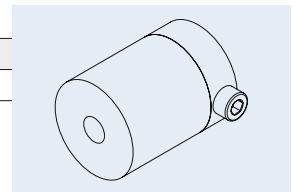
Round

Order no.	
D-0600	∅ 15 mm
D-0366	∅ 20 mm
D-0337	∅ 25 mm



Unshaped round

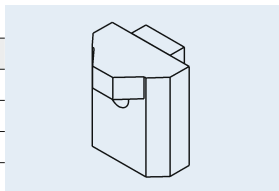
Order no.	
D-0598	∅ 35 mm



Welding shoes type HS28

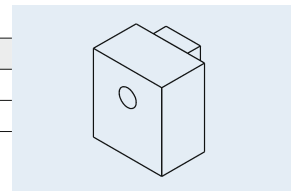
Fillet seam

Order no.	sheet thickness (mm)
D-1761	30
D-1762	35
D-1763	40



Unshaped

Order no.	lxw	mm
D-1760	70x60	
D-1543	90x80	



ACCESSORIES

Type ExOn 10

Order no.

D-2527 Die with cutting system for mass



Order no.

DX355 Revolving head



Order no.

D-2528 Pneumatic for cutting system



Type Robot 0,8

Order no.

DX350 Revolving head



Test equipment

Spark tester

Order no.	
5200229	230V



Welding rod dereeler for 1 roll

Order no.	
5118190	



Vacuum pump

Order no.	
DX150	230V
DX096	120V



Vacuum test bells

Rectangular

Order no.	
DX121	740x280x160 mm



Round

Order no.	
5200306	∅ 210 mm
DX122	∅ 360 mm



Inside edge

Order no.	
5200315	



Outside edge

Order no.	
5200330	



Inside corner down

Order no.	
5200310	



Outside corner down

Order no.	
5200320	



Inside corner up

Order no.	
5200325	



Outside corner up

Order no.	
5200335	



HeatOn-GROUP

— YOUR BEST CHOICE —

Consulting – Sales – Training – Service – Development

Beratung – Verkauf – Schulung – Service – Entwicklung

BAK
www.bak-ag.com 

DOHLE
www.dohle-extruder.de

HERZ
www.herz-gmbh.com



BAK Thermoplastic Welding Technology AG

Industriestrasse 6
6064 Kerns/Switzerland

Tel. ++41 (0)41 661 22 50, Fax ++41 (0)41 661 22 51
e-mail info@bak-ag.com