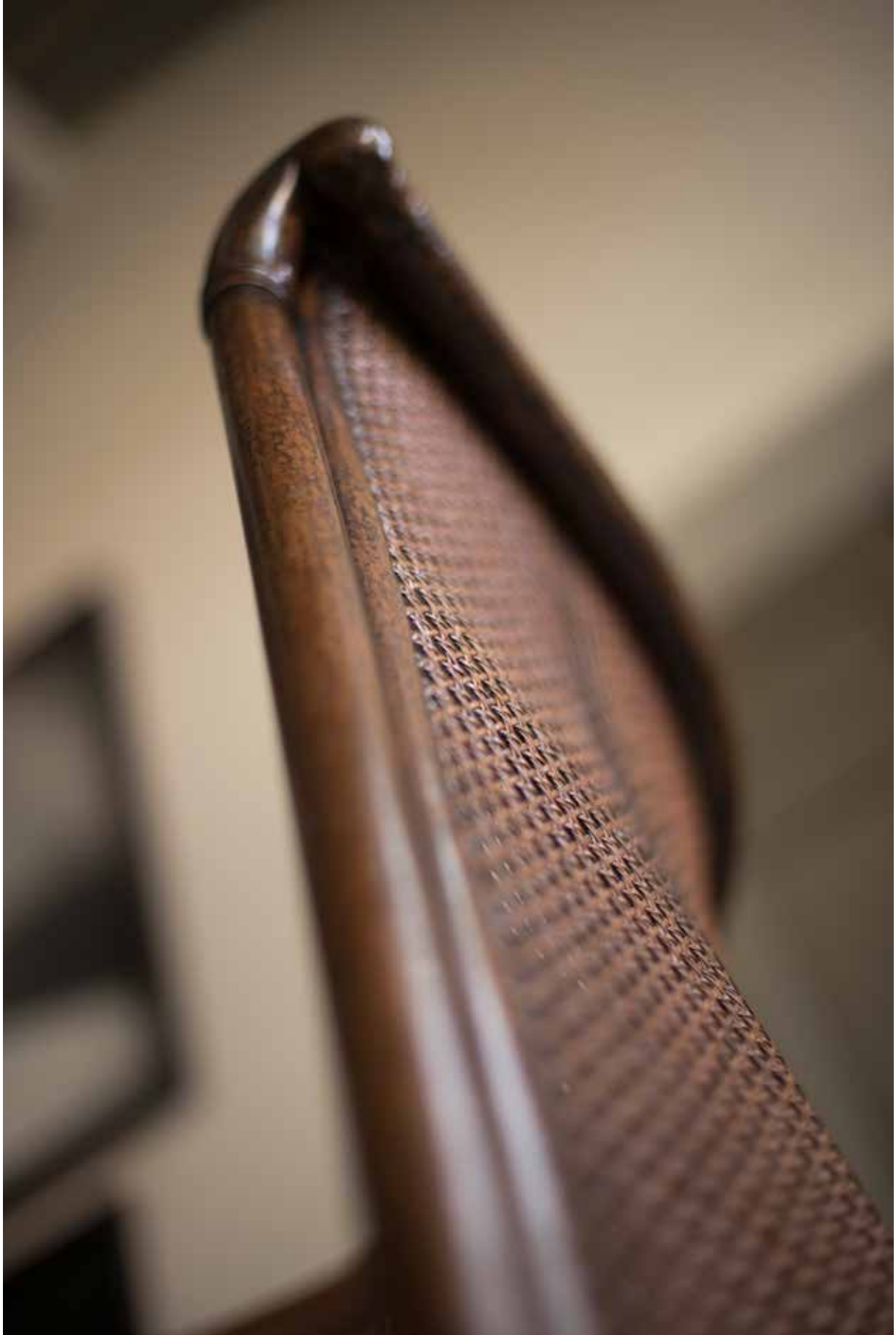


FALL WINTER





*Diamondogs is a consciously timeless luxury brand,  
offering a carefully edited garde-robe of glamorous and feminine pieces.  
Tastefully open to interpretation, these pieces are celebrated by a woman of substance,  
individuality and sophistication, and worn on endless occasions,  
gathering stories and memories along the way.*







# CALLAS

Made in Moroccan silk crêpe, with long cuffed structured sleeves and slash neckline, this dress has defining angular details in the back. Callas combines classic tailoring with distinctive features, channeling opera's most beloved icon.









# CAPUCINE

Cut from fluid silk crêpe de chine, this dress features a wide collar, deep V-neck and superimposed sleeves. The fitted waist and below the knee length give off a signature feminine allure.







# HEMINGWAY

A sharply tailored smart-shirt featuring a Mao collar and detachable blazer lapels, inspired by men's tailoring: a masculine twist on a classic lady-chemise.



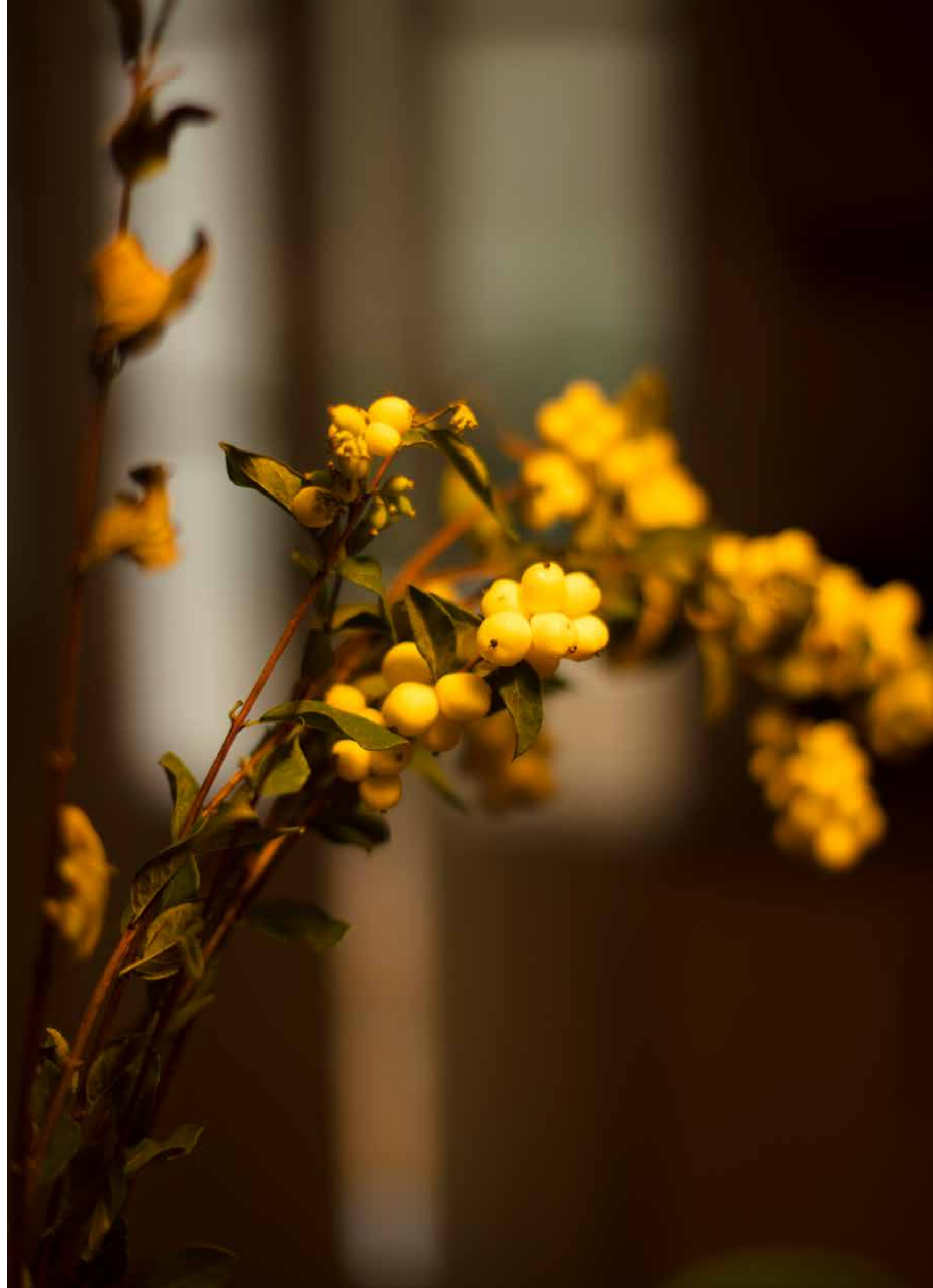




# MARQUESS

A fluid kaftan, cut from lustrous silk that holds its shape and flows easily, featuring an embroidered cannabis leaf appliqué on the back. With pleated sleeves, a deep V neckline and front slit, it is the perfect attire for a decadent home-soirée, or as dressy loungewear.



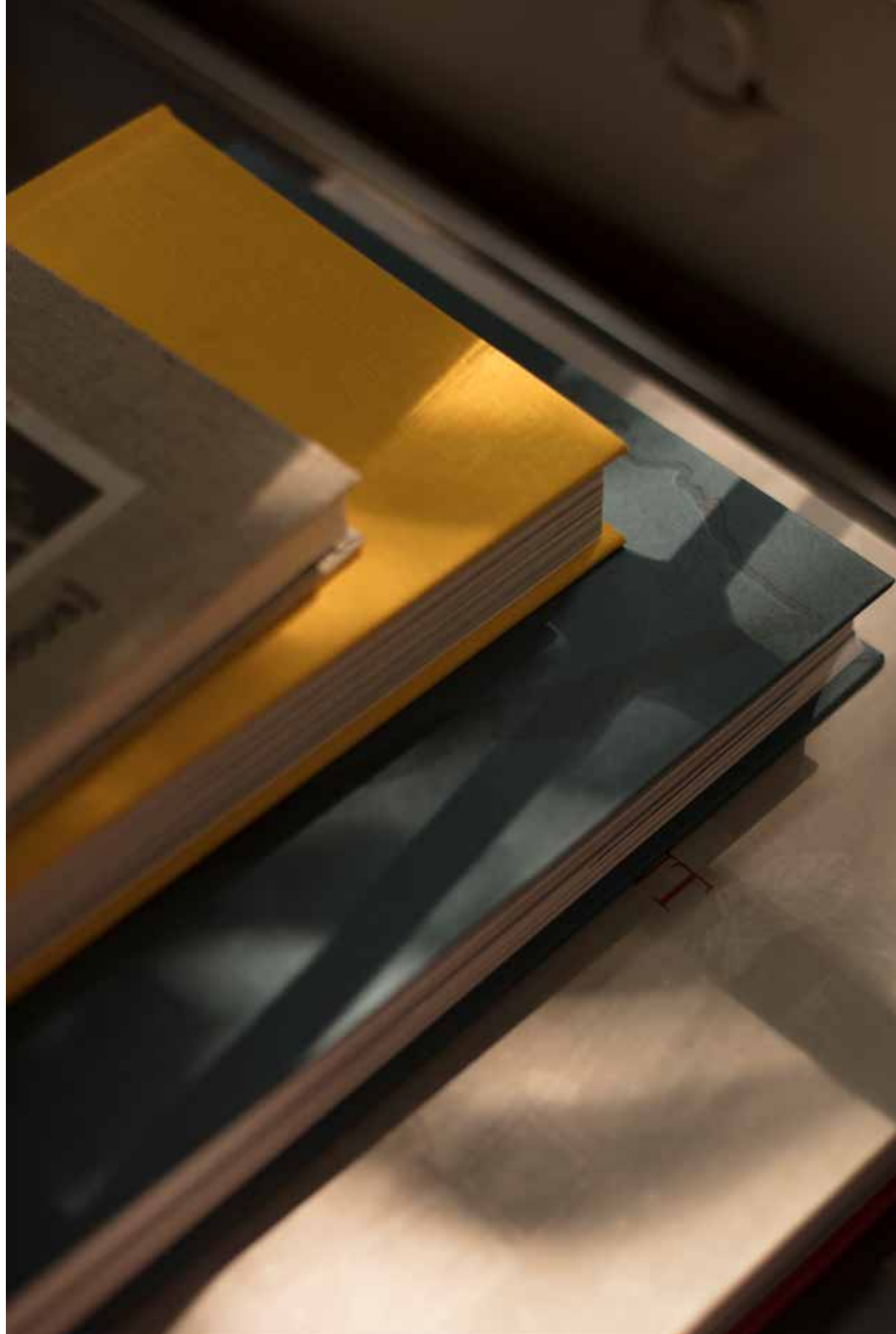






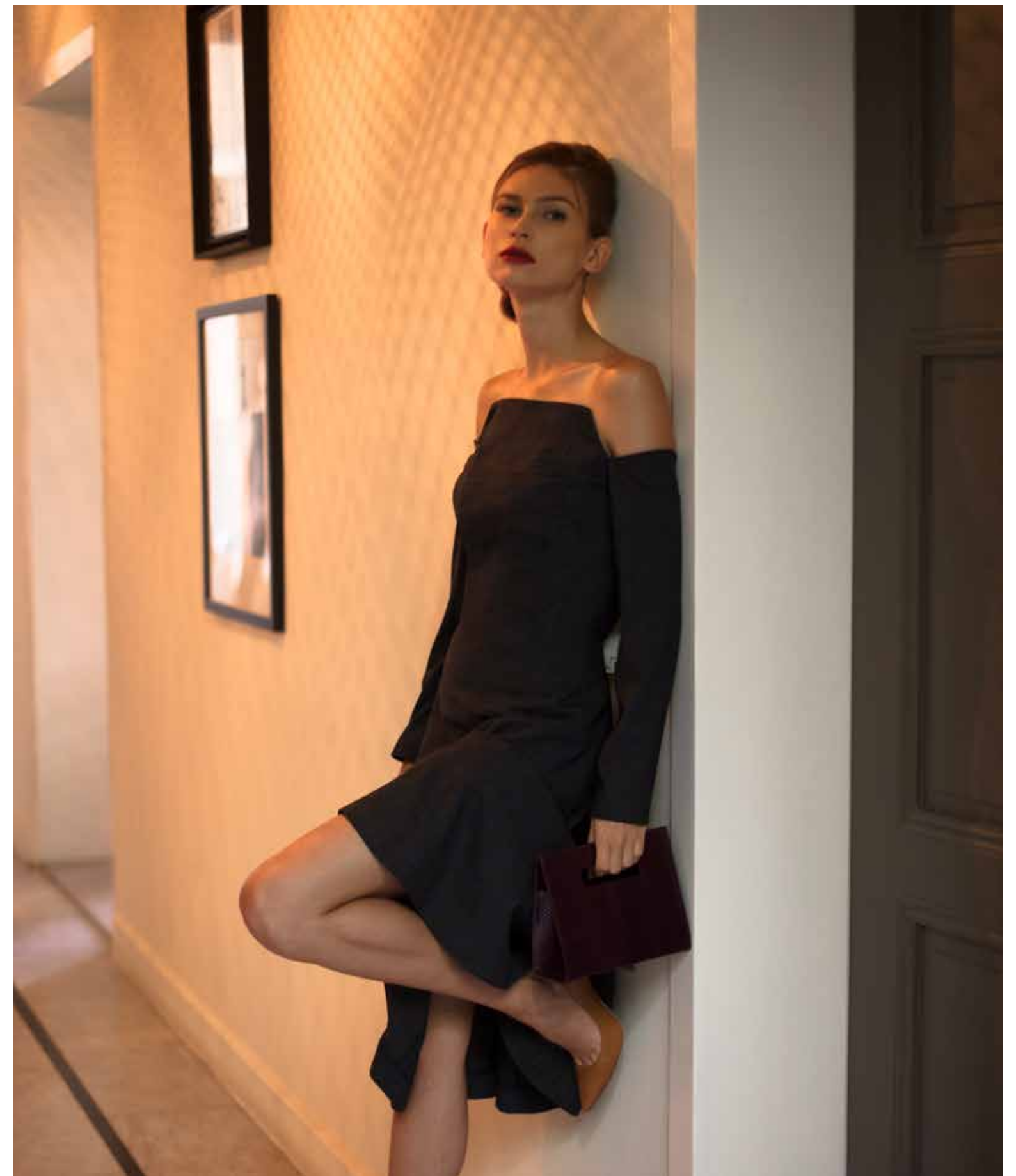
# L'ANAMOUR

This diaphanous silk dress channels timeless grace, with its hazy and playful movement. It is the epitome of feminine finesse: Light, but oh so powerful.









## SWANN

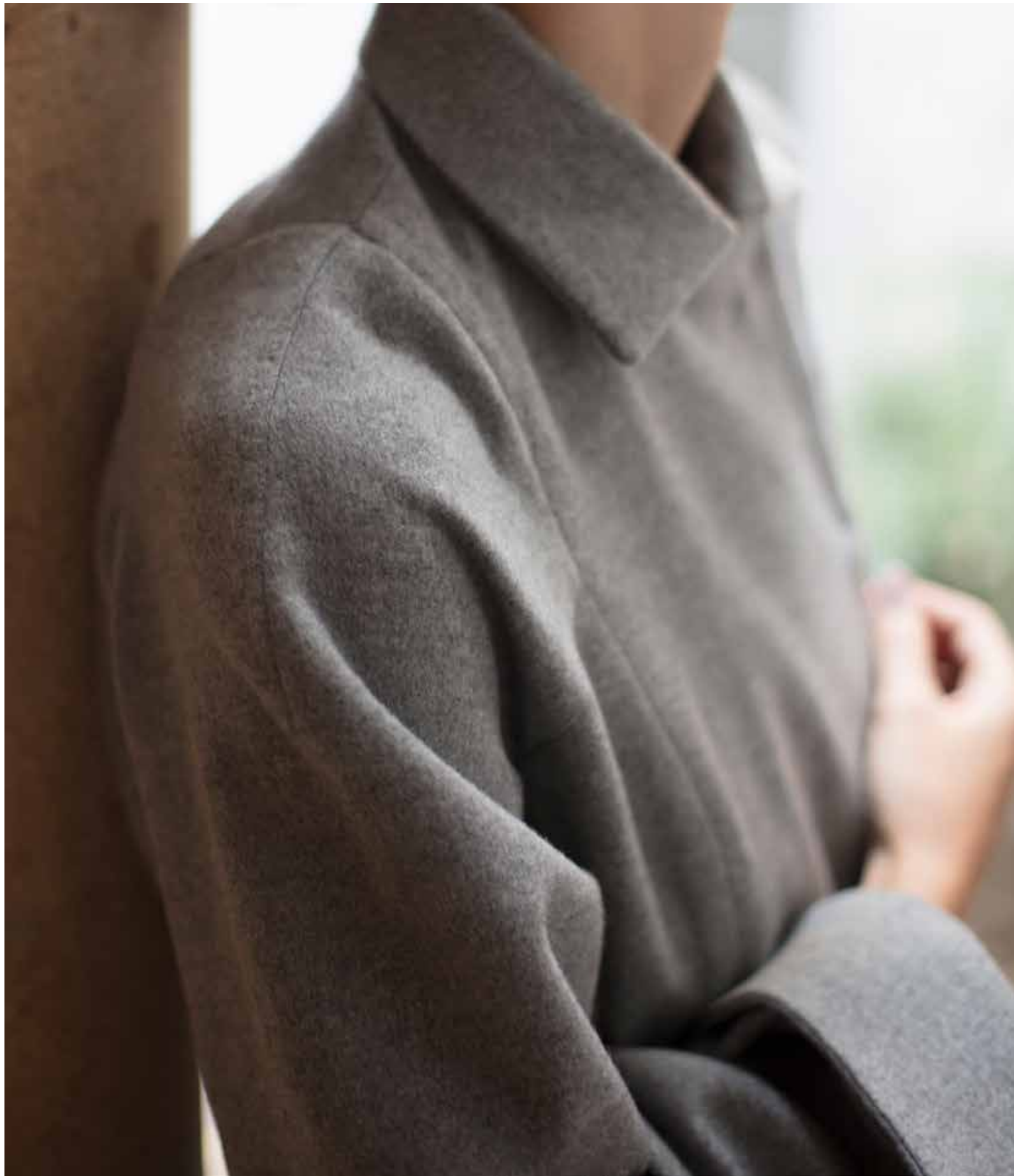
A day-through-night midi dress with a distinctive geometric neckline, linking to long sleeves, that underlines the beauty of collarbones and shoulders. The free-flowing hem adds movement and contrasts nicely with the upper boning of the dress, bringing a poetic harmony between masculine and feminine.



# THE KNICK

Classically tailored with a custom fit, this cashmere coat is a wardrobe staple. The wide collar, patch pockets and couture details on the sleeves add to its versatility: it goes just as well with a gown as it does with trousers.





# BOY

A double-breasted cashmere coat, with concealed buttoning that can be fully closed for a demure look or completely open to instantly revamp the silhouette. The exaggerated straight-line pockets and flared sleeves add to the striking effect. A long-lasting, live-in piece.







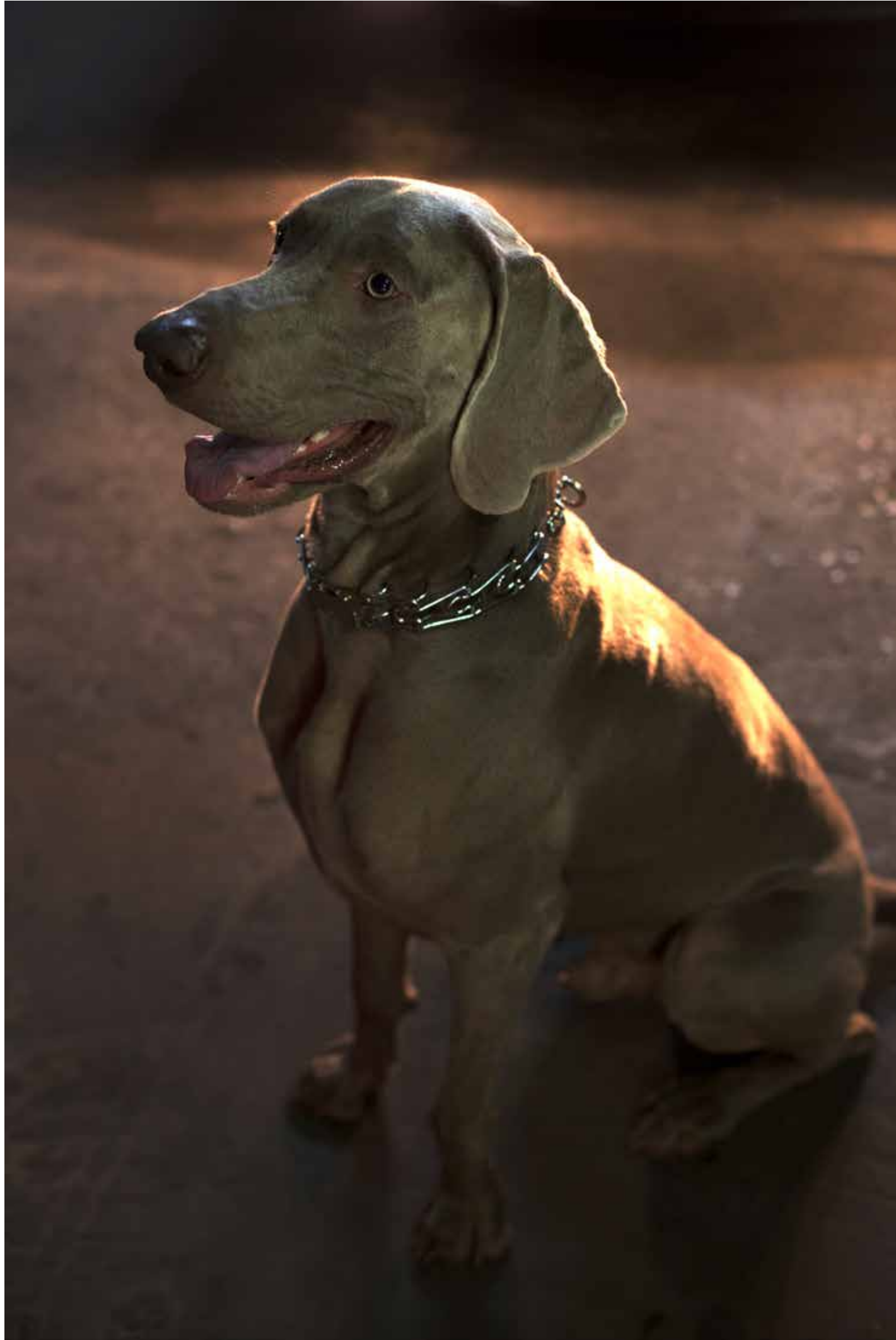




# MARCELLO

A sexy take on the staple black dress, featuring a square neckline, with folding that goes all the way to the back while elongating the body. The flattering cut sculpts an hourglass figure, while the back slit ensures you can move easily on the dance floor.











For information & appointments: +961 76 999 337  
Email: [contact@diamondogs.com](mailto:contact@diamondogs.com)  
Instagram: [@diamondogsofficial](https://www.instagram.com/diamondogsofficial)  
Website: [www.diamondogs.com](http://www.diamondogs.com)  
Showroom: Gouraud Street, Gemmayze - Beirut Lebanon