

Your journey begins with collecting your DNA sample



Scan the QR code to view the instructional video, or follow the blood spot collection instructions below.

In this sample collection kit:

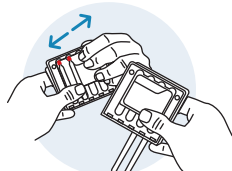
- Instructions
- Bandage
- Lancet
- Mitra® cartridge
- Gauze
- Ziplock specimen bag

If you have questions, or require assistance, please contact the DNAnalysis office on **011 268 0268** or email admin@dnalysis.co.za

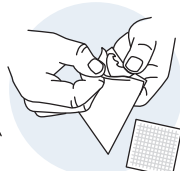
1 First unpack and prepare your kit contents:



Pull off lancet cap



Open the Mitra® cartridge



Unwrap gauze



Unpeel back of bandage

2 Wash your hands:



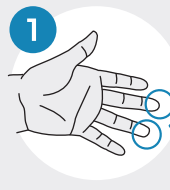
Prior to sample collection, wash your hands with warm, soapy water to avoid contamination.

3 Carefully read and follow the blood spot collection instructions below:

Before you collect your blood sample:



Warm your hands by rubbing them together for 30 seconds.

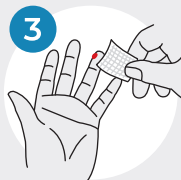


1 Select the finger you will use to provide your blood sample.

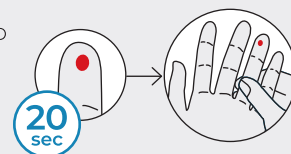
Recommended locations



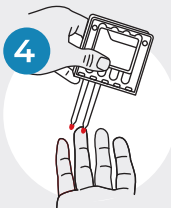
2 Prick your finger by laying hand on a hard surface. Position the lancet on the side of chosen fingertip. Apply firm pressure to end of lancet until a click is heard.



3 Wipe away first blood drop with the gauze. A new blood drop may take up to 20 seconds to form.



If needed, gently massage pricked finger upward until a drop forms.



4 Collect sample by touching one of the two sampling tips to the blood drop. First, watch it turn fully red. Next, count 2 seconds. Last, slowly remove the tip from blood. Repeat this process with the second sampling tip.

You may apply the tip to the blood drop multiple times to fill.



Make sure all sampler tips are filled correctly

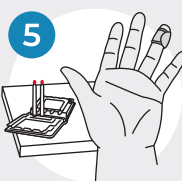


A Under-sampling occurs when:

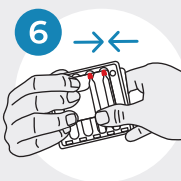
1. The sampling tip is removed from the blood too soon. Touch the tip to the blood until no white remains.
2. Blood flow stops. If this happens, repeat steps 3-4 with same tip until it turns fully red.



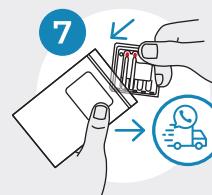
B Over-sampling occurs when blood is dripped onto the sampler tip from above. Always touch tip to blood drop as shown in step 4.



5 Set sampling device down on hard surface and apply bandage to your finger.



6 Close the sampling device by lifting the sides to meet at the top. Press together until a click is heard.



7 Insert sampling device into the specimen bag and seal shut.

Book the courier collection of your sample at <https://dnalysis.co.za/courier-form/>