

**JEJU KOREA  
BROMPTON  
CYCLING TOUR  
12 - 17 JUNE 2024**

BRIEFING VIA VIDEO  
CONFERENCE AT YOUR  
CONVENIENCE

DM US FOR A BOOKING



Eugene Lim  
(Programme Director)  
eugene.lim@highachievers.com.sg  
HP : 97902204 / 89257912  
highachievers.com.sg



CAMP HIGH ACHIEVERS  
ACTIVE LEISURE

 @bromptonexperiences

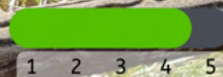
**6** DAYS  
**5** NIGHTS  
**200** KM

BROMPTON TOUR  
JEJU, KOREA

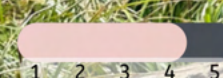


**B** KR JEJU  
200KM  
5 NIGHTS

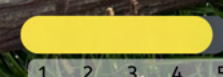
**Tour Profile**



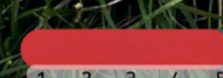
Difficulty



Cuisine



Accommodation



Scenery

**JEJU, KOREA**



For the few who have the pleasure of owning a Brompton, we now present a unique experience you can embark on in exciting Jeju, Korea.

We have carefully selected 4 trails which offer breathtaking views and safe cycling pathways for the Brompton.

Cover 35km per day or 50km if you are able to. Take in the clean mountain air and take amazing photos on this tour. Designed for beginner to intermediate cyclists.

Enjoy Active Leisure at its best with our team of guides and touring specialists !

"All the facets of Korea !"

ADRIAN KHOO





**CHANGWIDO POINT**

## STUNNING CYLING VIEWS

*A cyclist's dream journey*

Embark on a thrilling adventure with our 6-day, 5-night Brompton tour to Jeju Island, South Korea. Our cycling journey begins at Yongdooam Point, a scenic coastal spot boasting unique rock formations and stunning ocean views. Pedal through vibrant landscapes, visiting Haegeoreum Point, known for mesmerizing sunset vistas, and challenge yourself with a ride to the iconic Seongsan Sunrise Peak, a UNESCO World Heritage site offering breathtaking panoramic views.

Explore the beauty of Seosogak Point, where cliffs meet turquoise waters, and continue your journey to Udo Island. Known for its charming rural scenery and sandy beaches, Udo Island offers a unique and serene cycling experience. Finally, our

"Discover the best of Korea's  
Cycling"



**SOESOGAK POINT**



**HAEGEOREUM POINT**



**SEONGSAN SUNRISE PEAK**



**HAMDEOK POINT**



\*Passenger vehicle and logistics vehicle support on cycling tours!



**UDO ISLAND**





**GRAND HYATT JEJU**



**LOTTE RESORT**



**HAEVICH RESORT**

## ICONIC ACCOMODATION

*Quality rest for the next cycling stage*

After a great ride, relax in the comfort of carefully curated hotels and resorts located along the planned scenic stretches of Jeju Island.

In addition to the amenities and services, our selected luxurious venues are the perfect base for exploring Jeju, for you to rest and relax between cycling stages.

Accommodation venues are prepared to receive you and your Brompton!



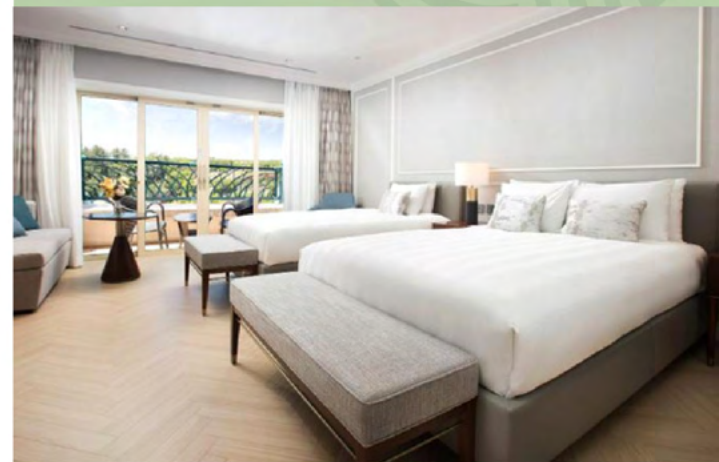
"Truly a unique experience designed for your Brompton!"



Brompton Friendly Hotel



**GRAND HYATT JEJU**



**LOTTE RESORT**



**HAEVICH RESORT**





**UNIQUE BIKEWAYS**



**DEDICATED BIKE TRAILS**



**LOCAL BROMPTON TOURING GUIDES**

## ACTIVE LEISURE

*Attractions that reward your cycling!*

We have a lineup of meaningful stop-over attractions you can look forward to along your cycling journey.

Choice rest points will delight you with Korea's relishing local cuisine and culture.

Jeju offers a unique cycling experience for the beginner and intermediate cyclist.

Experience Jeju's scenic nature and breathtaking coastlines.

Tour the natural landscape on a Brompton with confidence together with our team of dedicated guides and Brompton specialists.



"Sensory Wonder "



**EPIC COASTLINES**



**COMFORTABLE TRANSFER**



**LOCAL SPECIALITIES**



## RIDE 1

Changwido > Jungmun  
(50 km)

## RIDE 2

Jungmun > Pyoseonbaeksa  
(45 km)

## RIDE 3

HPYOSEONBAEKSA > UDO  
ISLAND  
(45 km)

## RIDE 4

SEONGSAN SUNRISE PEAK >  
SAMYANG  
(40 km)

## PROGRAMME RATES

Rates: **\$5,000/pax (Twin Share)**

**\$5,500/pax (Single Room)**

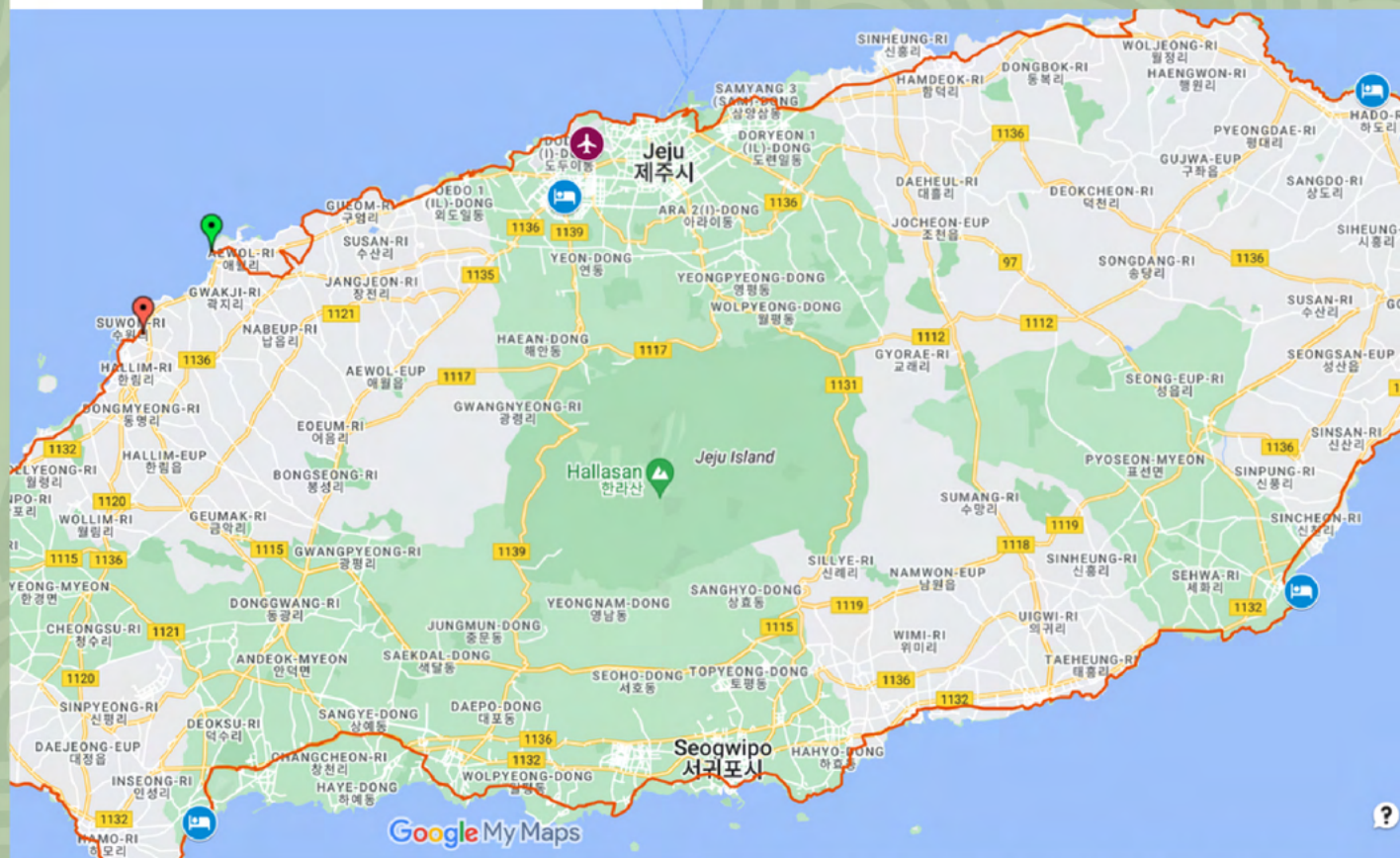
The Tour package includes the following:

- **6D/5N** Guided Cycling Expedition
- **>200km** of Scenic Bikeway Cycling
- **4-Star Hotel** with Daily Breakfast
- **Meals:** 4 Breakfast, 4 Lunch, 4 Dinner
- **Brompton Logistics: Support Van**
- **Minibus Passenger Support Vehicle**
- On Tour Brompton Guide & Mechanic
- Culture and Wine Activities
- Airport Transfer



VARIETY OF CUISINE

200 KM ! FULL PASSENGER SUPPORT



\*Map route for illustration purposes only. Details upon request.



## FOCUS ON THE RIDE



## BROMPTON EXPERIENCES



### Terms and Conditions

- Expedition excludes :
  - Air ticket to Fukuoka International Airport
  - Visa fee (where applicable)
  - Alcohol during meals (optional extra)
  - Personal Travel Insurance
- Expedition includes :
  - Pre-trip inspection and advisory
  - Pre-expedition Conditioning Training Sessions
  - Brompton Travel Case packing recommendation
- The expedition will proceed with a minimum of 10 participants registered.
- Participants are required to bring your own Brompton bicycle, but we also provide Brompton rental upon request.
- Participants should be in good physical condition with the ability to ride up to 35 km per day.
- 100% tour fee upon confirmation
- Participants are required to have all 3 vaccination shots with certification (mRNA vaccines only).
- Participants are required to secure travel insurance up to \$30,000 (including COVID-19 precautions).
- Participants are required to follow the planned itinerary and touring rules for safe cycling.
- In the event of wet weather, participants can choose to ride or opt for local sightseeing.
- Camp High Achievers Pte Ltd (Brompton Experiences) reserves the right to change, amend and/or remove any terms and conditions herein without prior notice.

## BROMPTON PREMIUM CYCLING TOURS A JOURNEY UNLIKE ANY OTHER!



License No.  
TA01748



On Tour  
Mechanic

## REST & RECUPERATE

### PREMIUM ACCOMMODATION VIEWS





## PRE/POST EXPEDITION CHECKS



## SUPPORT SERVICES AVAILABLE



**BIKE INSPECTION & SERVICING**



**BIKE FITTING**



**PHYSICAL ASSESSMENT &  
RIDING TECHNIQUES TRAINING**



**CONDITIONING TRAINING  
SESSIONS**

---

**PREPARE YOURSELF  
FOR A TRULY UNFORGETTABLE  
JOURNEY!**



## PREPARATION & TRAINING

