

Light efficiency:

80 Lumen/Watt

Light quality:

CRI: 95,2

Color temperature:

3062 K

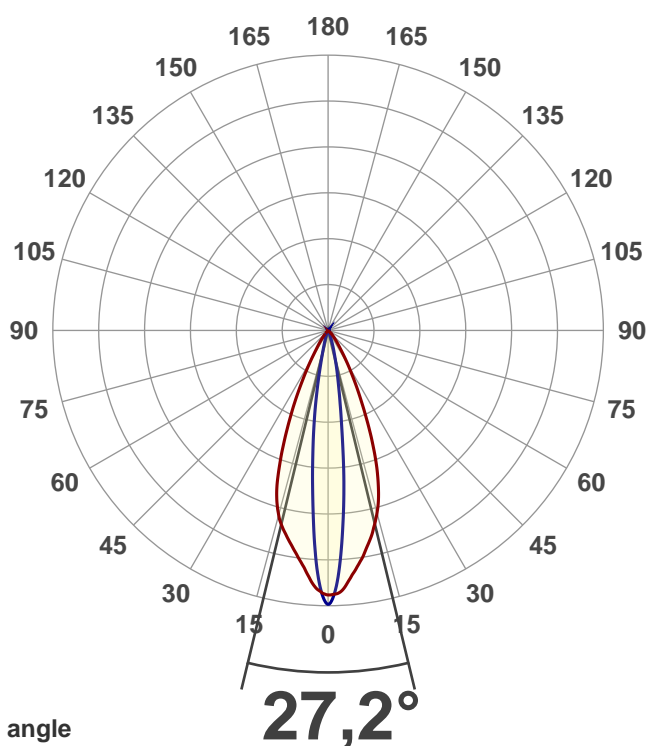
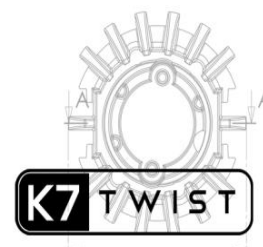
Output: 251 lm

Peak: 938 cd

Power: 3,2 W

3,00V @ 1,05A

2 PLANES



Beam angle

27,2°

Color

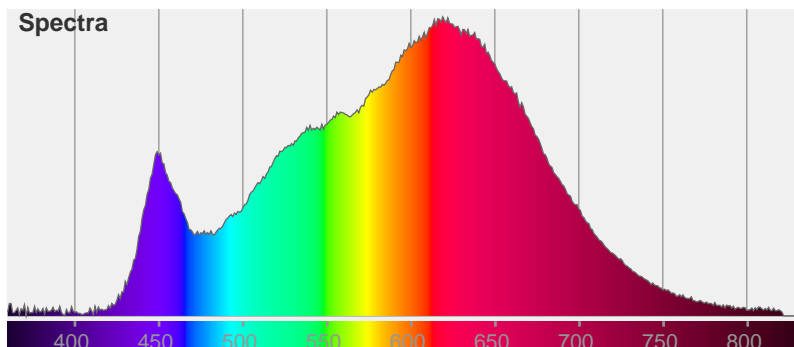


CIE1931

x: 0,426

y: 0,394

Spectra

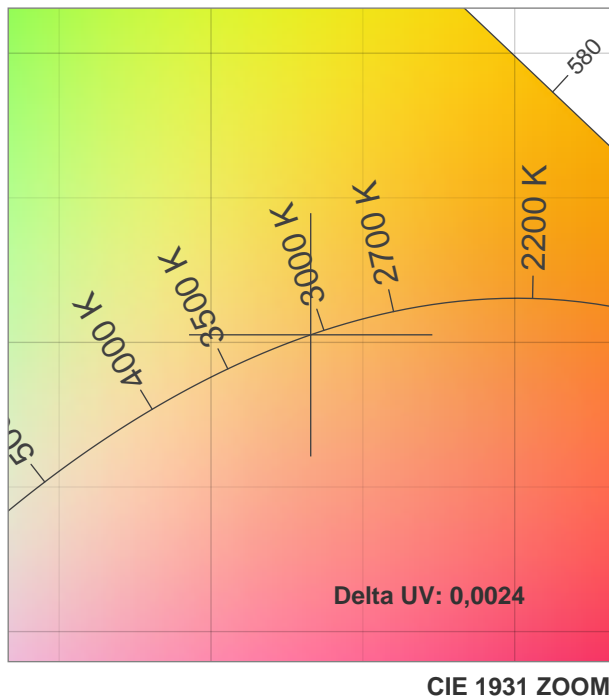
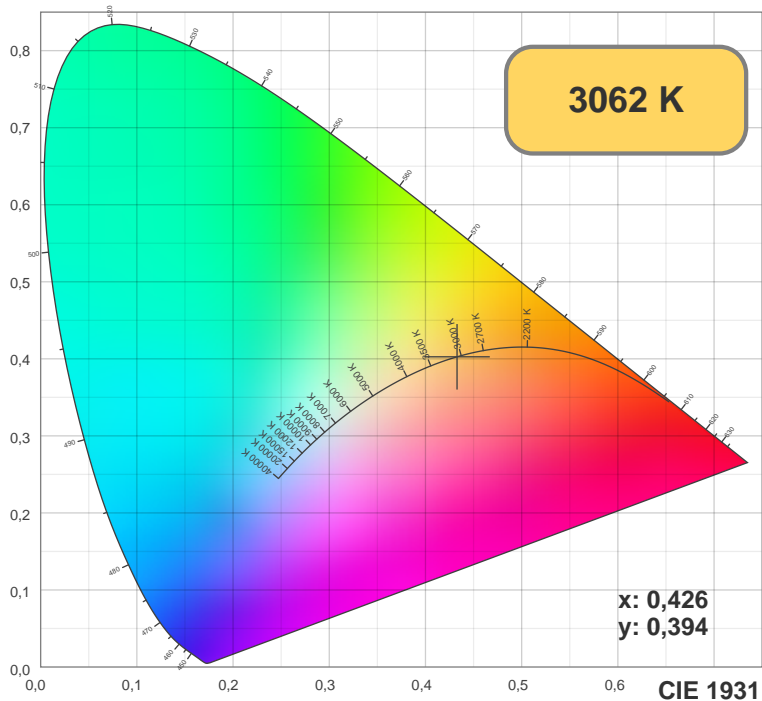


Product name:

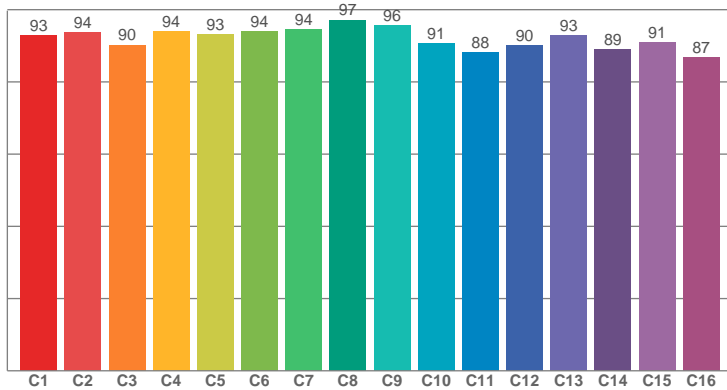
K7 3000 \_Elliptical\_ 90 0.5 res

Date and time:

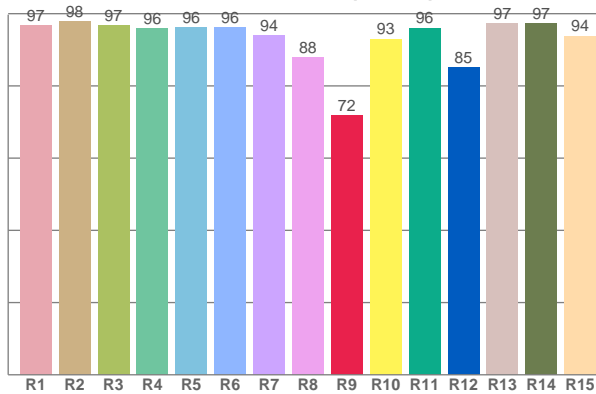
25-01-2018 12:51:01



TM30: 92,2



CRI: 95,2 (R1-R8)



CRI R values, only R1-R8 are used to calculate final CRI value

R1	R2	R3	R4	R5	R6	R7	R8	R9	R10	R11	R12	R13	R14	R15
96,66	97,78	96,68	95,94	96,15	96,24	94,04	87,84	71,89	92,98	96,06	85,03	97,32	97,27	93,81

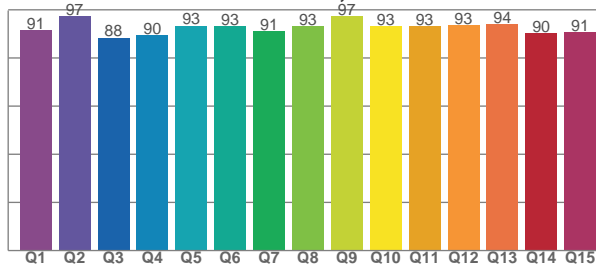
TM30 C values, 16 binned values out of total of 99 C values

C1	C2	C3	C4	C5	C6	C7	C8	C9	C10	C11	C12	C13	C14	C15	C16
92,85	93,77	90,24	93,97	93,22	93,99	94,49	97,18	95,63	90,61	88,07	90,11	92,84	89,08	91,00	86,82

CQS Q values

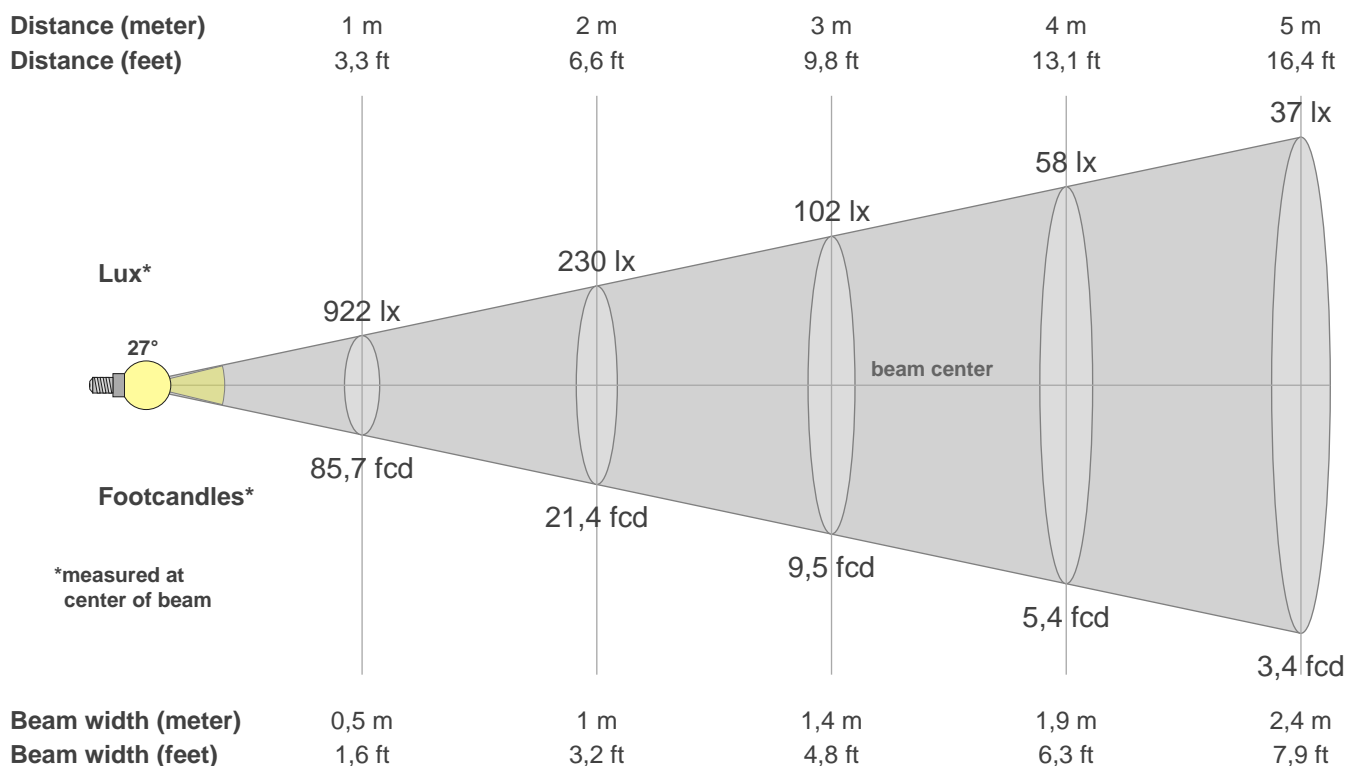
Q1	Q2	Q3	Q4	Q5	Q6	Q7	Q8	Q9	Q10	Q11	Q12	Q13	Q14	Q15
91,40	97,43	88,40	89,52	93,44	93,36	90,97	93,36	97,38	93,38	93,22	93,47	93,96	90,44	90,59

CQS: 92,2



Color parameters

CCT	CRI	CRI R9	TM30 Rf	TM30 Rg	CQS	x	y	u	v	Duv
3062 K	95,2	71,9	92,2	101,4	92,2	0,4	0,4	0,2	0,3	0,0024



### Intensities in 0° c-plane

0°	2°	4°	6°	8°	10°	12°	14°	16°	18°	20°	22°	24°	26°	28°	30°	32°	34°	36°	38°
922	902	876	835	798	757	718	672	622	557	480	395	311	241	183	138	101	74	56	43
100%	98%	95%	91%	87%	82%	78%	73%	67%	60%	52%	43%	34%	26%	20%	15%	11%	8%	6%	5%

### Intensities in 90° c-plane

0°	2°	4°	6°	8°	10°	12°	14°	16°	18°	20°	22°	24°	26°	28°	30°	32°	34°	36°	38°
922	867	701	517	337	223	152	102	68	44	27	17	12	10	8	6	5	5	4	3
100%	94%	76%	56%	37%	24%	16%	11%	7%	5%	3%	2%	1%	1%	1%	1%	1%	0%	0%	0%

### Intensities in 180° c-plane

0°	2°	4°	6°	8°	10°	12°	14°	16°	18°	20°	22°	24°	26°	28°	30°	32°	34°	36°	38°
922	892	858	813	775	741	709	676	630	569	482	391	306	231	168	117	79	57	41	30
100%	97%	93%	88%	84%	80%	77%	73%	68%	62%	52%	42%	33%	25%	18%	13%	9%	6%	4%	3%

### Intensities in 270° c-plane

0°	2°	4°	6°	8°	10°	12°	14°	16°	18°	20°	22°	24°	26°	28°	30°	32°	34°	36°	38°
922	866	695	511	359	233	133	76	47	32	21	15	12	10	8	6	5	4	3	3
100%	94%	75%	55%	39%	25%	14%	8%	5%	3%	2%	2%	1%	1%	1%	1%	0%	0%	0%	0%

Beam angle 50%	Field angle 10%	Cutoff angle 2,5%	Intensity ratio in 120° cone	Intensity ratio in 90° cone
27,2°	45,8°	61,1°	100,0%	99,9%