

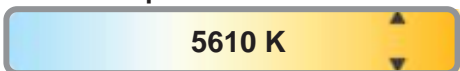
Light efficiency:



Light quality:



Color temperature:



Output: 13077 lm

Peak: 4874 cd

Power: 164,9 W

PF: 0,93



Product name:

**BB&S -
AREA_48_COLOR_5600_KELVIN**

Item number:

BB&S - AREA_48_COLOR

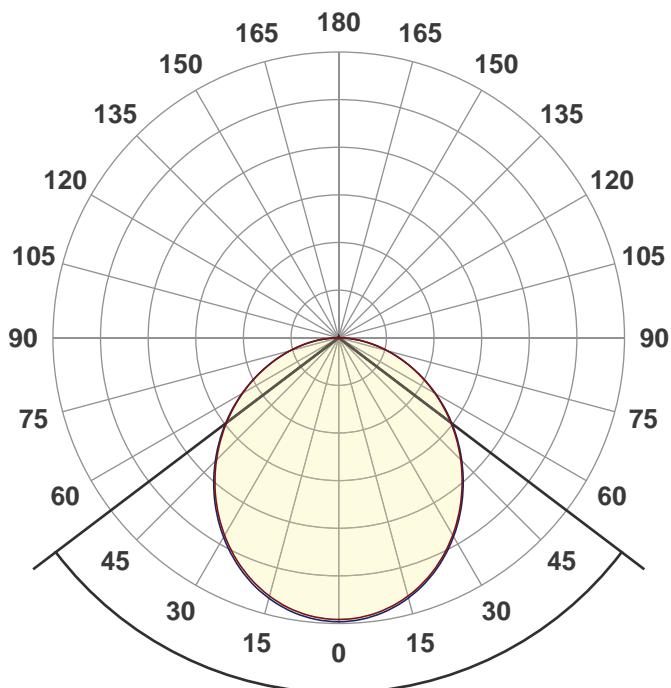
Date and time:

16-10-2018 14:11:08

Description:

Measured in 8 planes.

Measurement by Jakob D. Jepsen



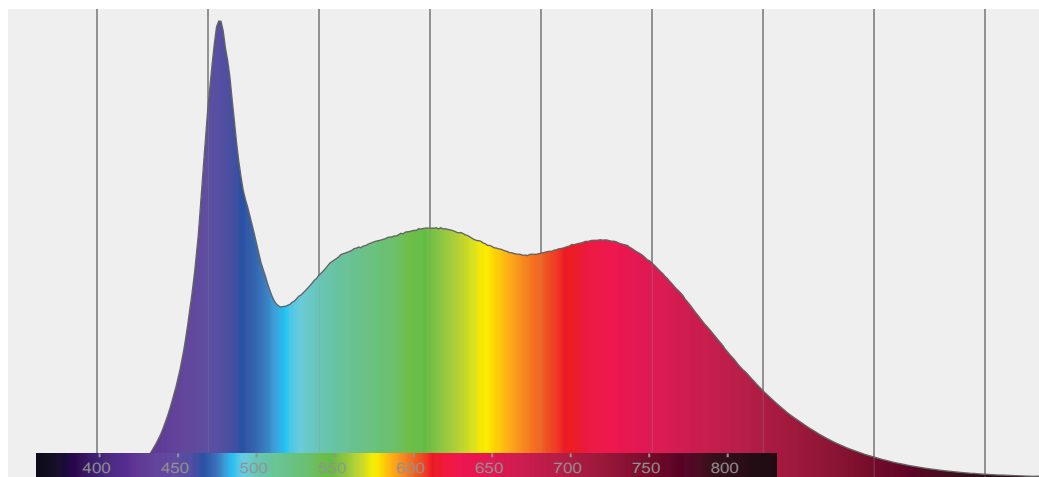
Beam angle

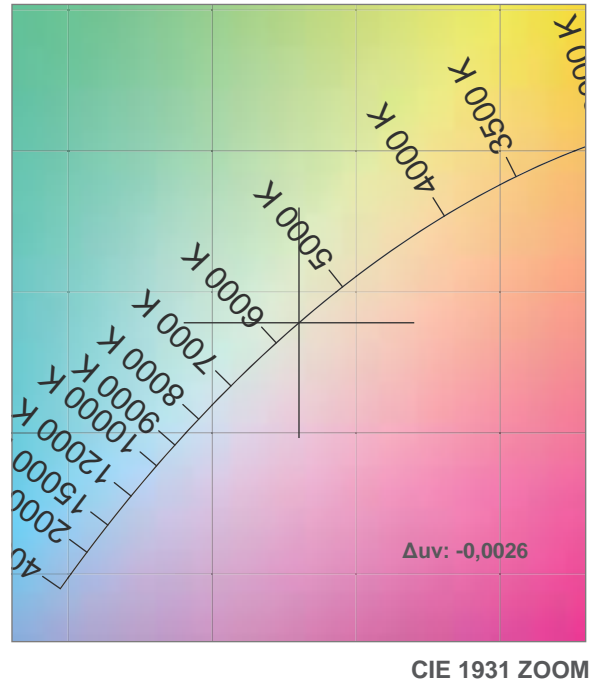
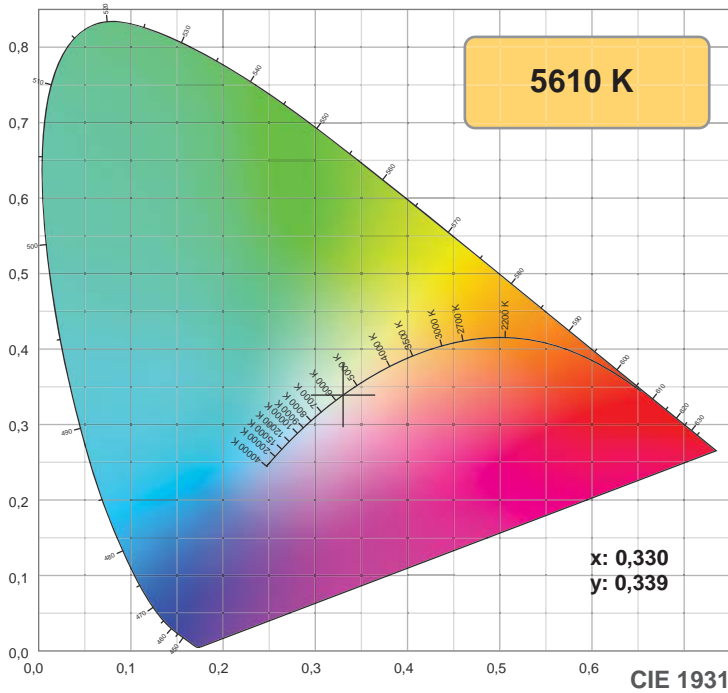
105,7°



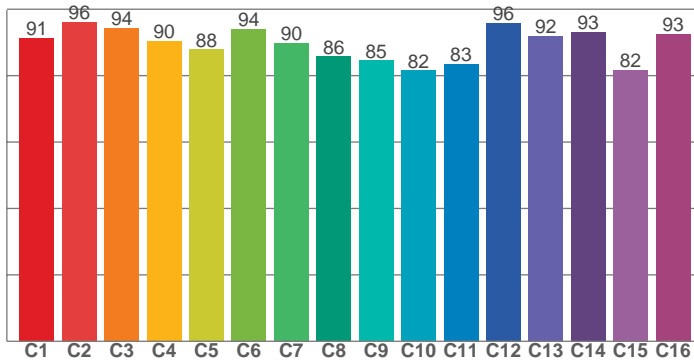
CIE 1931
x: 0,330
y: 0,339

Spectra

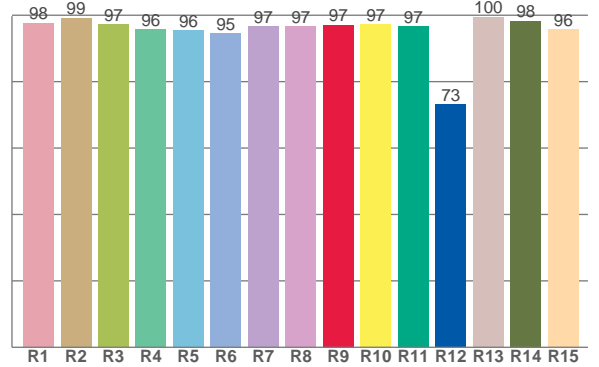




TM30: 89,4



CRI: 96,6 (R1-R8)



CRI R values, only R1-R8 are used to calculate final CRI value

R1	R2	R3	R4	R5	R6	R7	R8	R9	R10	R11	R12	R13	R14	R15
97,7	99,2	97,3	95,6	95,5	94,7	96,6	96,6	97,1	97,3	96,6	73,1	99,5	98,3	95,8

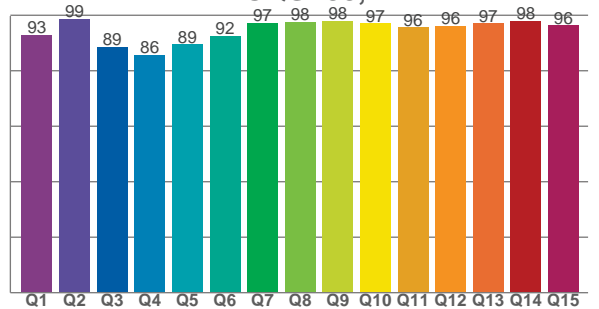
TM30 C values, 16 binned values out of total of 99 C values

C1	C2	C3	C4	C5	C6	C7	C8	C9	C10	C11	C12	C13	C14	C15	C16
91,3	96,1	94,3	90,4	88,0	94,0	89,8	85,8	84,6	81,5	83,5	95,9	91,9	93,1	81,8	92,6

CQS Q values

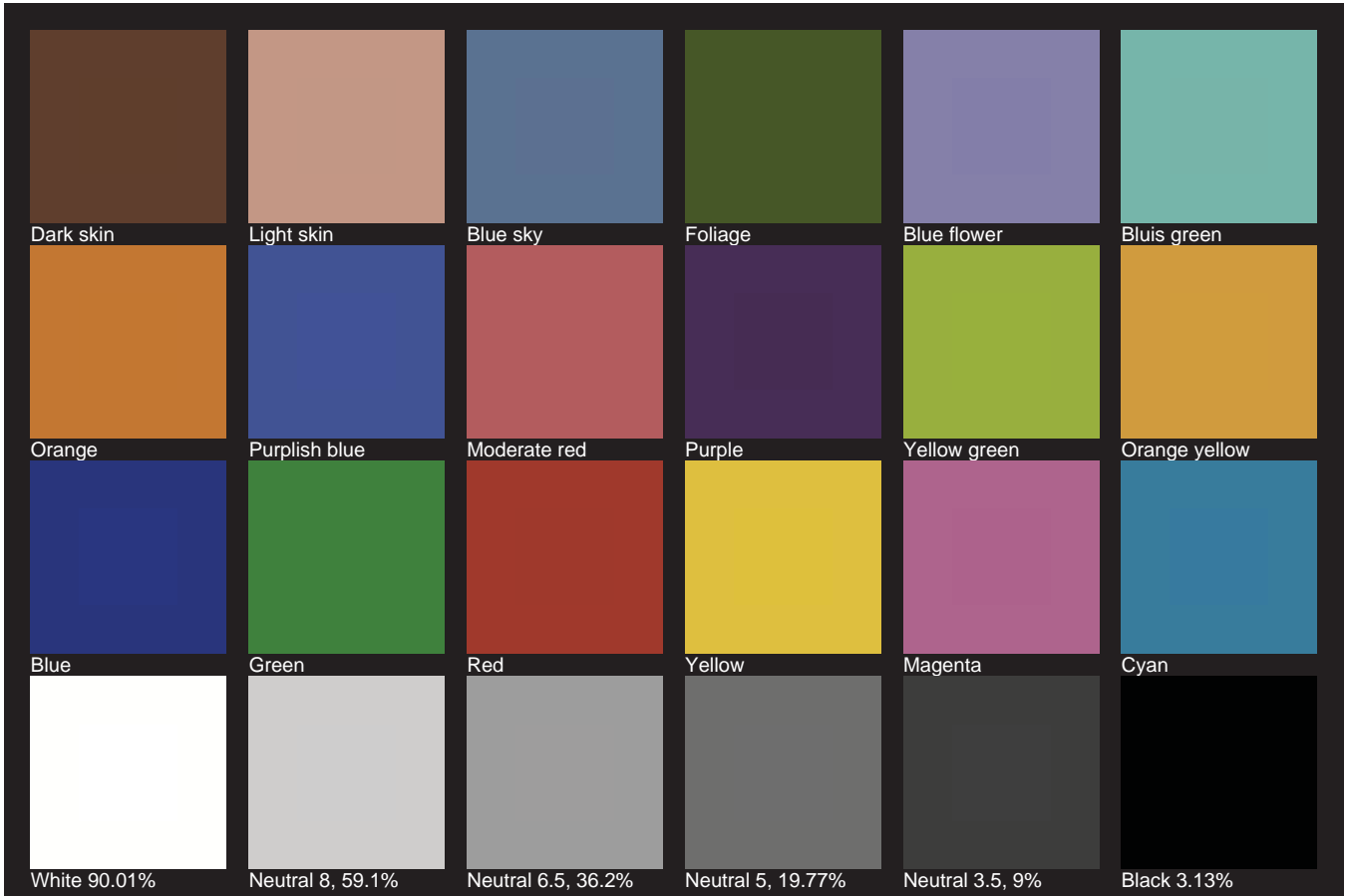
Q1	Q2	Q3	Q4	Q5	Q6	Q7	Q8	Q9	Q10	Q11	Q12	Q13	Q14	Q15
92,9	98,7	88,6	85,6	89,5	92,5	97,1	97,6	97,9	97,0	95,5	96,1	97,1	97,8	96,3

CQS: 93,4

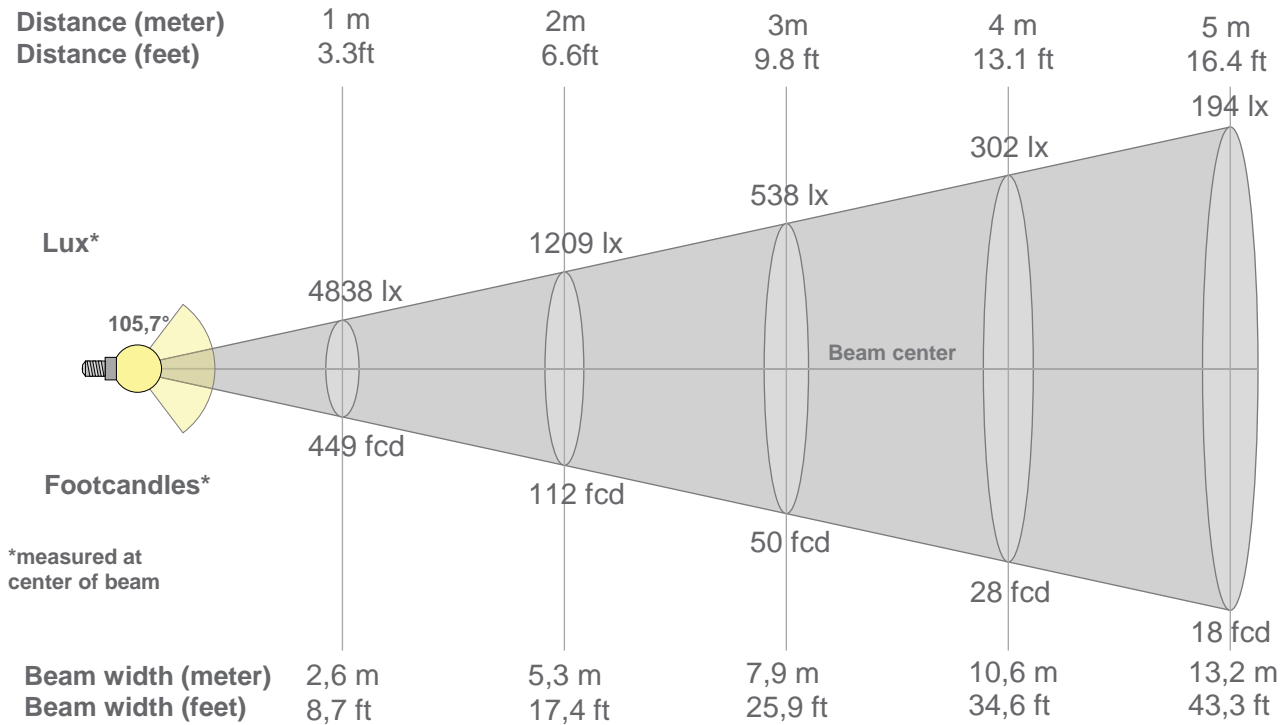


Color parameters

Color temperature	Color rendering index	Red component	Color fidelity	Color gamut	Color quality scale	Color coordinate cie 1931	Color coordinate cie 1931	Color coordinate	Color coordinate	Color deviation from black body
CCT	CRI	CRI R9	TM30 Rf	TM30 Rg	CQS	x	y	u	v	Δuv
5610 K	96,6	97,1	89,4	98,1	93,4	0,330	0,339	0,207	0,320	-0,0026



96 *Television Lighting Consistency Index.*



Beam intensities from 1-20m

1m	2m	3m	4m	5m	6m	7m	8m	9m	10m	11m	12m	13m	14m	15m	16m	17m	18m	19m	20m
3,3ft	6,6ft	9,8ft	13,1ft	16,4ft	19,7ft	23ft	26,2ft	29,5ft	32,8ft	36,1ft	39,4ft	42,7ft	45,9ft	49,2ft	52,5ft	55,8ft	59,1ft	62,3ft	65,6ft
4838lx	1209lx	538lx	302lx	194lx	134lx	99lx	76lx	60lx	48lx	40lx	34lx	29lx	25lx	22lx	19lx	17lx	15lx	13lx	12lx
449,5fcd	112,4fcd	49,9fcd	28,1fcd	18fcd	12,5fcd	9,2fcd	7fcd	5,5fcd	4,5fcd	3,7fcd	3,1fcd	2,7fcd	2,3fcd	2fcd	1,8fcd	1,6fcd	1,4fcd	1,2fcd	1,1fcd

Intensities in 0° c-plane

0°	5°	10°	15°	20°	25°	30°	35°	40°	45°	50°	55°	60°	65°	70°	75°	80°	85°	90°	95°
4838	4802	4719	4585	4403	4175	3910	3614	3293	2961	2615	2262	1904	1548	1202	869	554	263	48	5
100%	99%	98%	95%	91%	86%	81%	75%	68%	61%	54%	47%	39%	32%	25%	18%	11%	5%	1%	0%

Intensities in 90° c-plane

0°	5°	10°	15°	20°	25°	30°	35°	40°	45°	50°	55°	60°	65°	70°	75°	80°	85°	90°	95°
4838	4843	4757	4620	4434	4205	3938	3641	3321	2985	2639	2284	1921	1560	1206	864	543	253	56	5
100%	100%	98%	95%	92%	87%	81%	75%	69%	62%	55%	47%	40%	32%	25%	18%	11%	5%	1%	0%

Intensities in 180° c-plane

0°	5°	10°	15°	20°	25°	30°	35°	40°	45°	50°	55°	60°	65°	70°	75°	80°	85°	90°	95°
4838	4804	4723	4589	4406	4178	3914	3620	3302	2964	2616	2260	1902	1547	1203	870	555	263	42	4
100%	99%	98%	95%	91%	86%	81%	75%	68%	61%	54%	47%	39%	32%	25%	18%	11%	5%	1%	0%

Intensities in 270° c-plane

0°	5°	10°	15°	20°	25°	30°	35°	40°	45°	50°	55°	60°	65°	70°	75°	80°	85°	90°	95°
4838	4844	4761	4625	4442	4214	3949	3654	3334	2994	2642	2281	1917	1557	1204	868	551	261	59	5
100%	100%	98%	96%	92%	87%	82%	76%	69%	62%	55%	47%	40%	32%	25%	18%	11%	5%	1%	0%

Beam angle 50%	Field angle 10%	Cutoff angle 2,5%	Intensity ratio in 120° cone	Intensity ratio in 90° cone
105,7°	162,2°	175,6°	78,5%	54,3%