

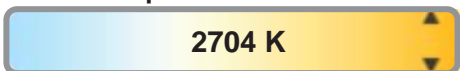
Light efficiency:



Light quality:



Color temperature:

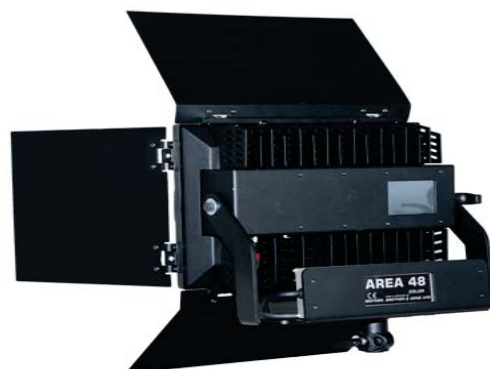


Output: 11232 lm

Peak: 4188 cd

Power: 162,1 W

PF: 0,93



Product name:

**BB&S -
AREA_48_COLOR_2700_KELVIN**

Item number:

BB&S - AREA_48_COLOR

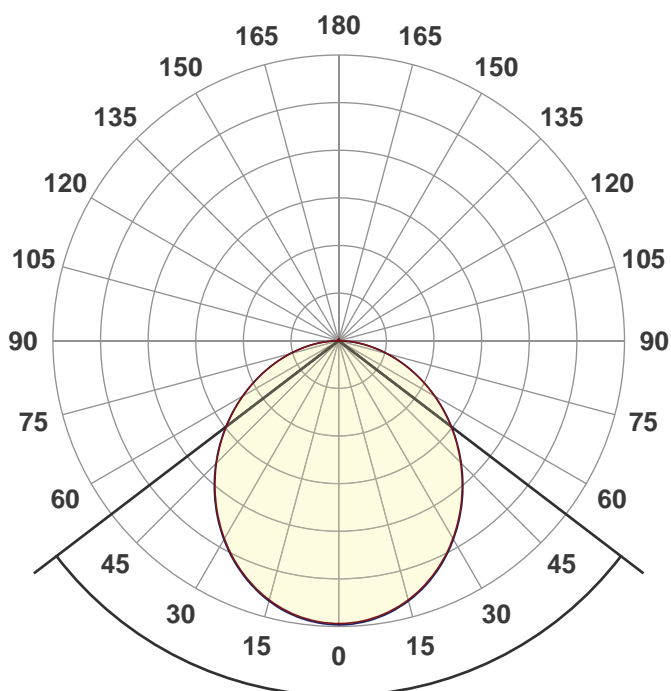
Date and time:

16-10-2018 14:16:35

Description:

Measured in 8 planes.

Measurement by Jakob D. Jepsen



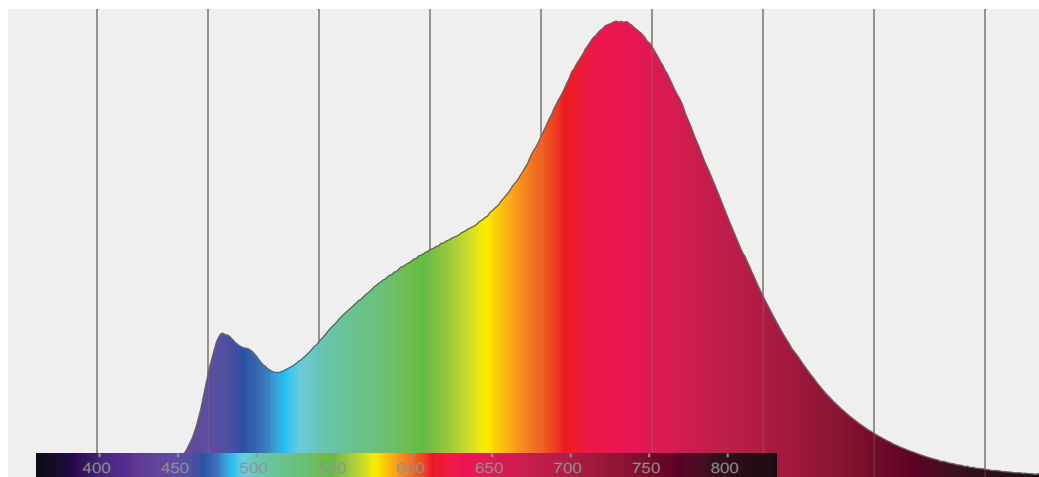
Beam angle

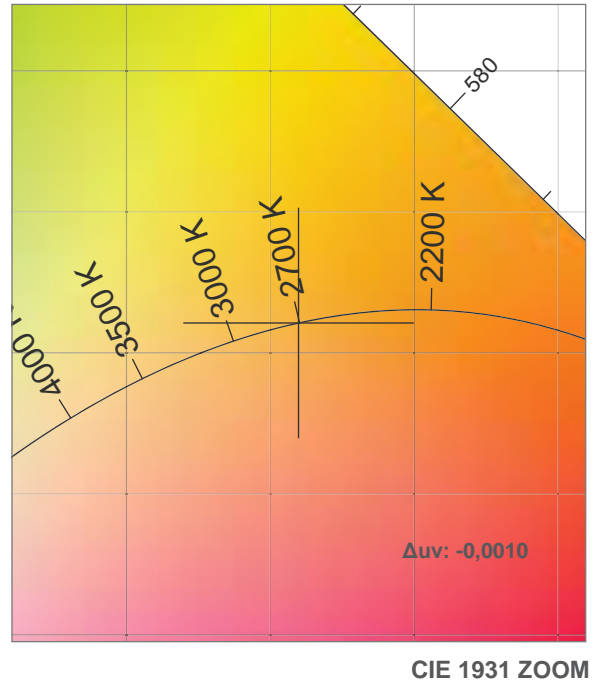
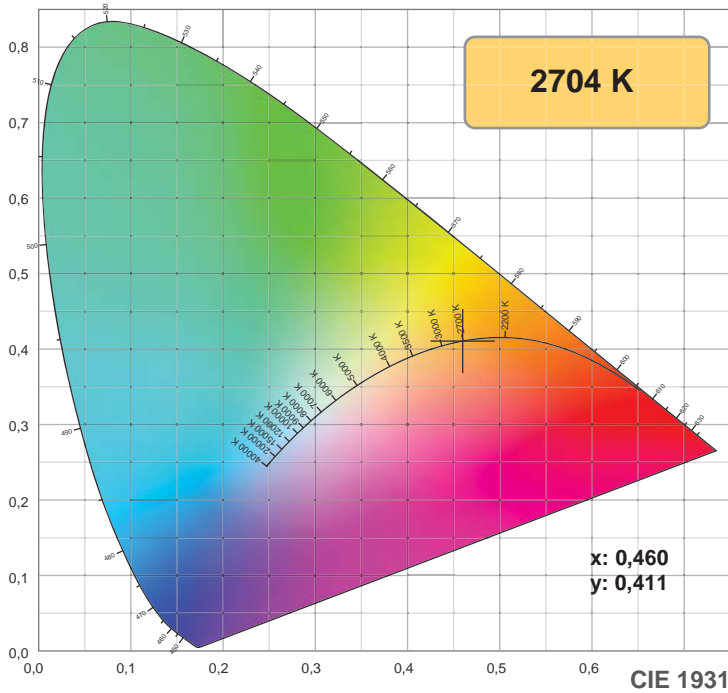
105,3°



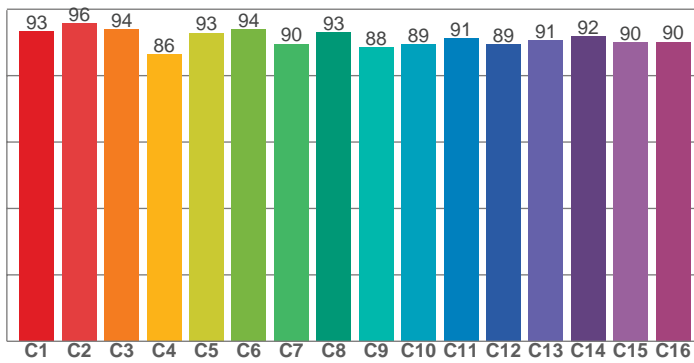
CIE 1931
x: 0,460
y: 0,411

Spectra

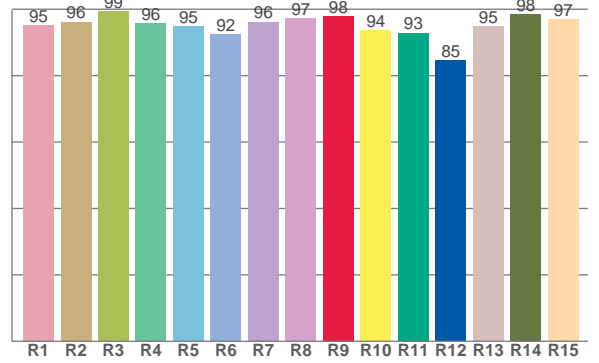




TM30: 91,2



CRI: 95,9 (R1-R8)



CRI R values, only R1-R8 are used to calculate final CRI value

R1	R2	R3	R4	R5	R6	R7	R8	R9	R10	R11	R12	R13	R14	R15
95,2	96,2	99,3	95,8	94,8	92,4	96,2	97,3	97,9	93,7	92,9	84,6	94,8	98,4	97,0

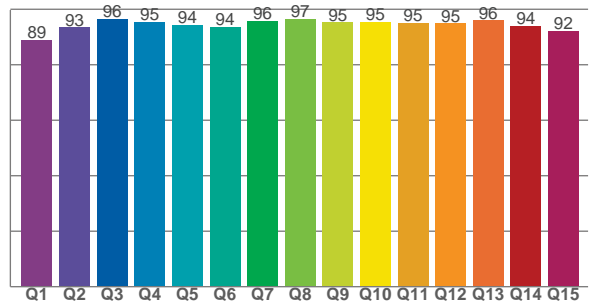
TM30 C values, 16 binned values out of total of 99 C values

C1	C2	C3	C4	C5	C6	C7	C8	C9	C10	C11	C12	C13	C14	C15	C16
93,3	95,7	94,0	86,4	92,8	93,9	89,6	93,0	88,4	89,4	91,1	89,4	90,6	91,9	90,0	90,1

CQS Q values

Q1	Q2	Q3	Q4	Q5	Q6	Q7	Q8	Q9	Q10	Q11	Q12	Q13	Q14	Q15
88,8	93,5	96,4	95,5	94,4	93,7	95,9	96,5	95,2	95,3	95,1	94,9	96,0	93,9	92,1

CQS: 93,9

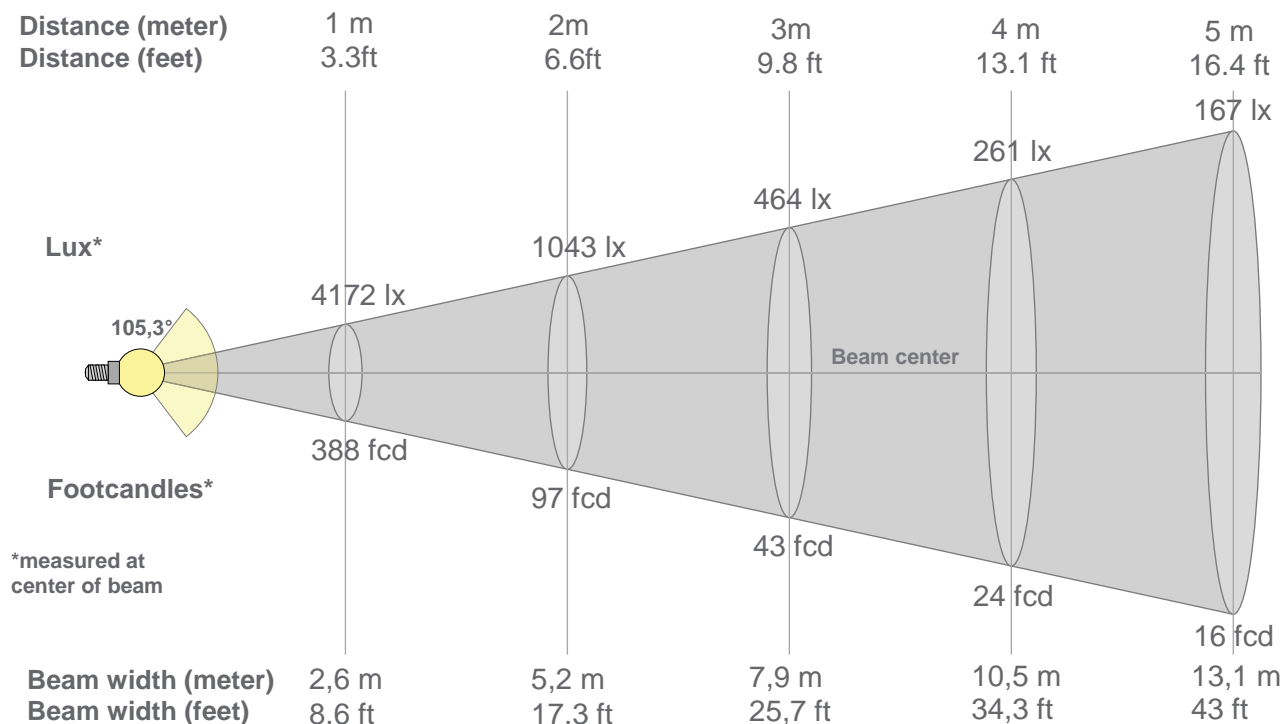


Color parameters

Color temperature	Color rendering index	Red component	Color fidelity	Color gamut	Color quality scale	Color coordinate cie 1931	Color coordinate cie 1931	Color coordinate	Color coordinate	Color deviation from black body
CCT	CRI	CRI R9	TM30 Rf	TM30 Rg	CQS	x	y	u	v	Δuv
2704 K	95,9	97,9	91,2	98,9	93,9	0,460	0,411	0,264	0,351	-0,0010



98 *Television Lighting Consistency Index.*



Beam intensities from 1-20m

1m	2m	3m	4m	5m	6m	7m	8m	9m	10m	11m	12m	13m	14m	15m	16m	17m	18m	19m	20m
3,3ft	6,6ft	9,8ft	13,1ft	16,4ft	19,7ft	23ft	26,2ft	29,5ft	32,8ft	36,1ft	39,4ft	42,7ft	45,9ft	49,2ft	52,5ft	55,8ft	59,1ft	62,3ft	65,6ft
4172lx	1043lx	464lx	261lx	167lx	116lx	85lx	65lx	52lx	42lx	34lx	29lx	25lx	21lx	19lx	16lx	14lx	13lx	12lx	10lx
387,6fc	96,9fcd	43,1fcd	24,2fcd	15,5fcd	10,8fcd	7,9fcd	6,1fcd	4,8fcd	3,9fcd	3,2fcd	2,7fcd	2,3fcd	2fcd	1,7fcd	1,5fcd	1,3fcd	1,2fcd	1,1fcd	1fcd

Intensities in 0° c-plane

0°	5°	10°	15°	20°	25°	30°	35°	40°	45°	50°	55°	60°	65°	70°	75°	80°	85°	90°	95°
4172	4146	4072	3954	3793	3596	3365	3109	2832	2543	2245	1940	1634	1329	1032	746	477	226	32	4
100%	99%	98%	95%	91%	86%	81%	75%	68%	61%	54%	47%	39%	32%	25%	18%	11%	5%	1%	0%

Intensities in 90° c-plane

0°	5°	10°	15°	20°	25°	30°	35°	40°	45°	50°	55°	60°	65°	70°	75°	80°	85°	90°	95°
4172	4162	4090	3974	3813	3614	3381	3124	2846	2555	2256	1951	1640	1330	1027	734	460	211	43	4
100%	100%	98%	95%	91%	87%	81%	75%	68%	61%	54%	47%	39%	32%	25%	18%	11%	5%	1%	0%

Intensities in 180° c-plane

0°	5°	10°	15°	20°	25°	30°	35°	40°	45°	50°	55°	60°	65°	70°	75°	80°	85°	90°	95°
4172	4144	4071	3953	3793	3597	3369	3114	2838	2549	2246	1939	1632	1328	1032	746	477	223	27	4
100%	99%	98%	95%	91%	86%	81%	75%	68%	61%	54%	46%	39%	32%	25%	18%	11%	5%	1%	0%

Intensities in 270° c-plane

0°	5°	10°	15°	20°	25°	30°	35°	40°	45°	50°	55°	60°	65°	70°	75°	80°	85°	90°	95°
4172	4160	4089	3972	3811	3615	3386	3130	2852	2560	2258	1950	1640	1334	1033	746	476	228	48	5
100%	100%	98%	95%	91%	87%	81%	75%	68%	61%	54%	47%	39%	32%	25%	18%	11%	5%	1%	0%

Beam angle 50%	Field angle 10%	Cutoff angle 2,5%	Intensity ratio in 120° cone	Intensity ratio in 90° cone
105,3°	162,1°	175,6°	78,5%	54,4%