

Light efficiency:



Light quality:



Color temperature:



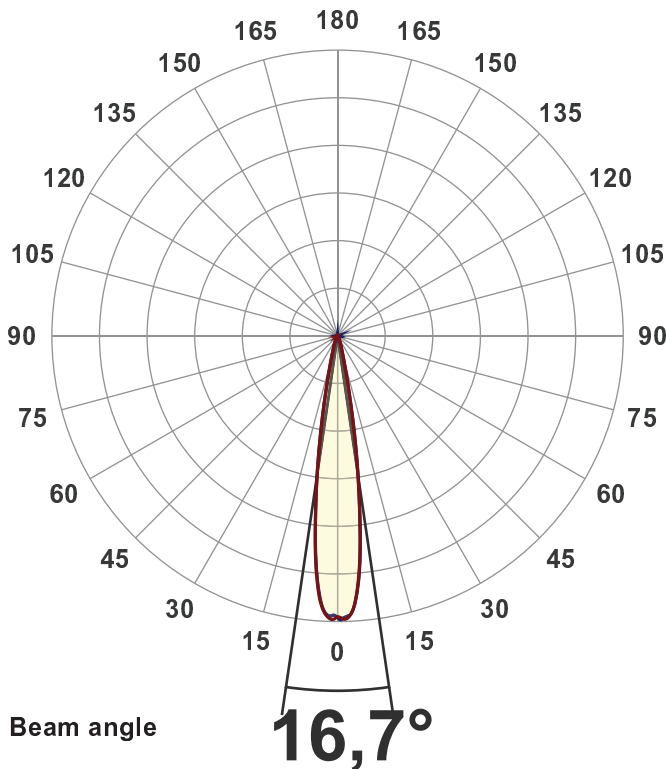
Output: 4673 lm
Peak: 43523 cd
Power: 42,6 W
PF: 1,0



Product name:
BB&S-CBL1-WIDE-5600K
 Item number:
BB&S-CBL1-WIDE-5600K
 Date and time:
01-08-2018 12:03:28
 Description:
Wide - 5600 Spotlight

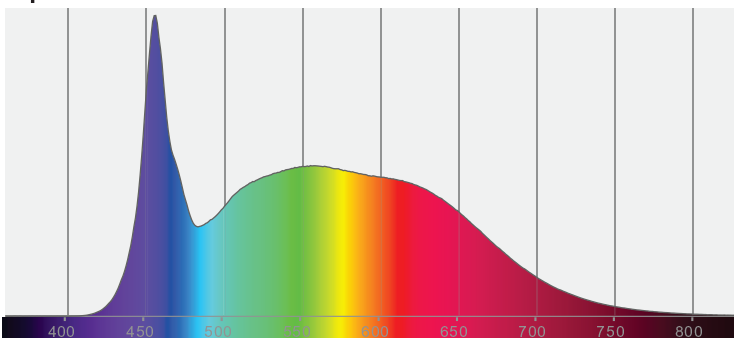
Measured at Ingemann Components by
 Jakob D. Jepsen

Measured in 8 planes to take into
 account for any stray lighting.

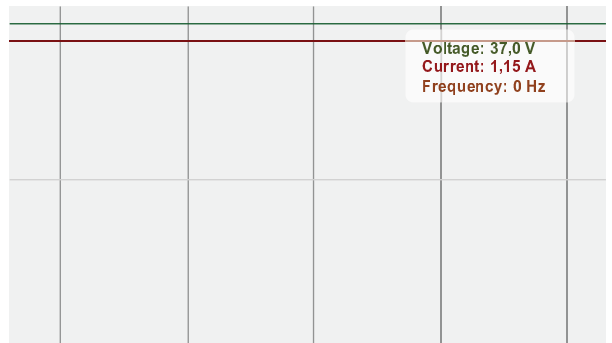


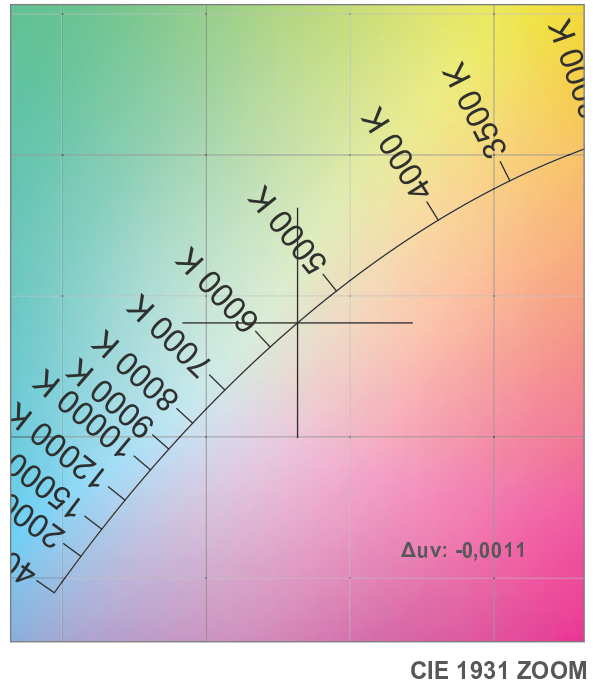
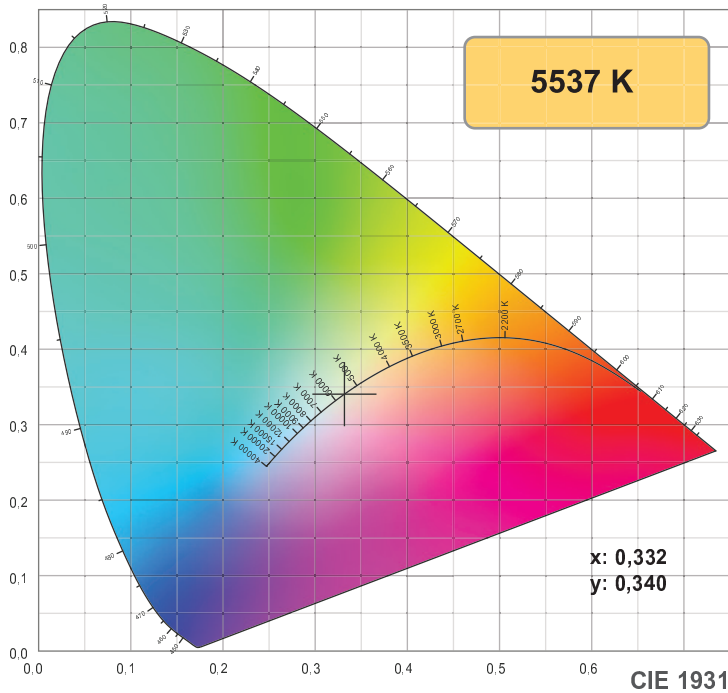
CIE 1931
 x: 0,332
 y: 0,340

Spectra

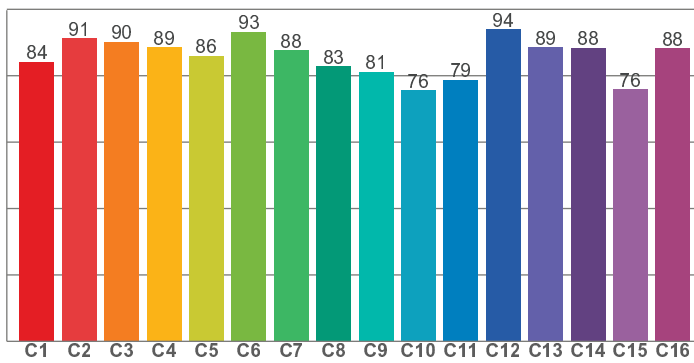


Power

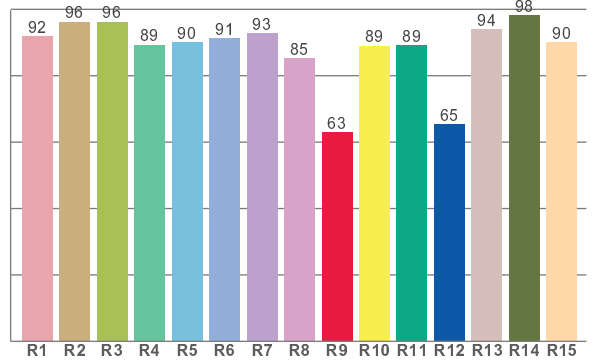




TM30: 85,8



CRI: 91,6 (R1-R8)



CRI R values, only R1-R8 are used to calculate final CRI value

R1	R2	R3	R4	R5	R6	R7	R8	R9	R10	R11	R12	R13	R14	R15
91,9	96,3	96,3	89,2	90,0	91,2	92,8	85,3	62,9	89,0	89,2	65,4	93,9	98,3	90,0

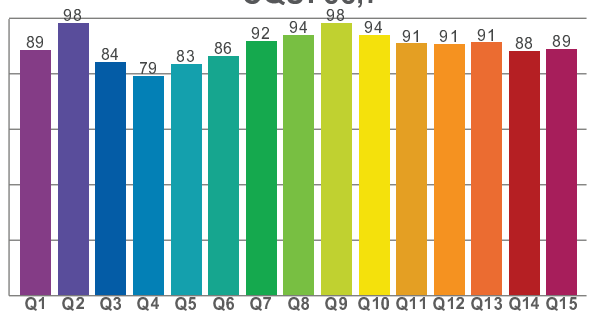
TM30 C values, 16 binned values out of total of 99 C values

C1	C2	C3	C4	C5	C6	C7	C8	C9	C10	C11	C12	C13	C14	C15	C16
84,1	91,2	90,2	88,6	86,0	93,2	87,6	82,9	81,1	75,6	78,8	93,9	88,6	88,4	75,9	88,2

CQS Q values

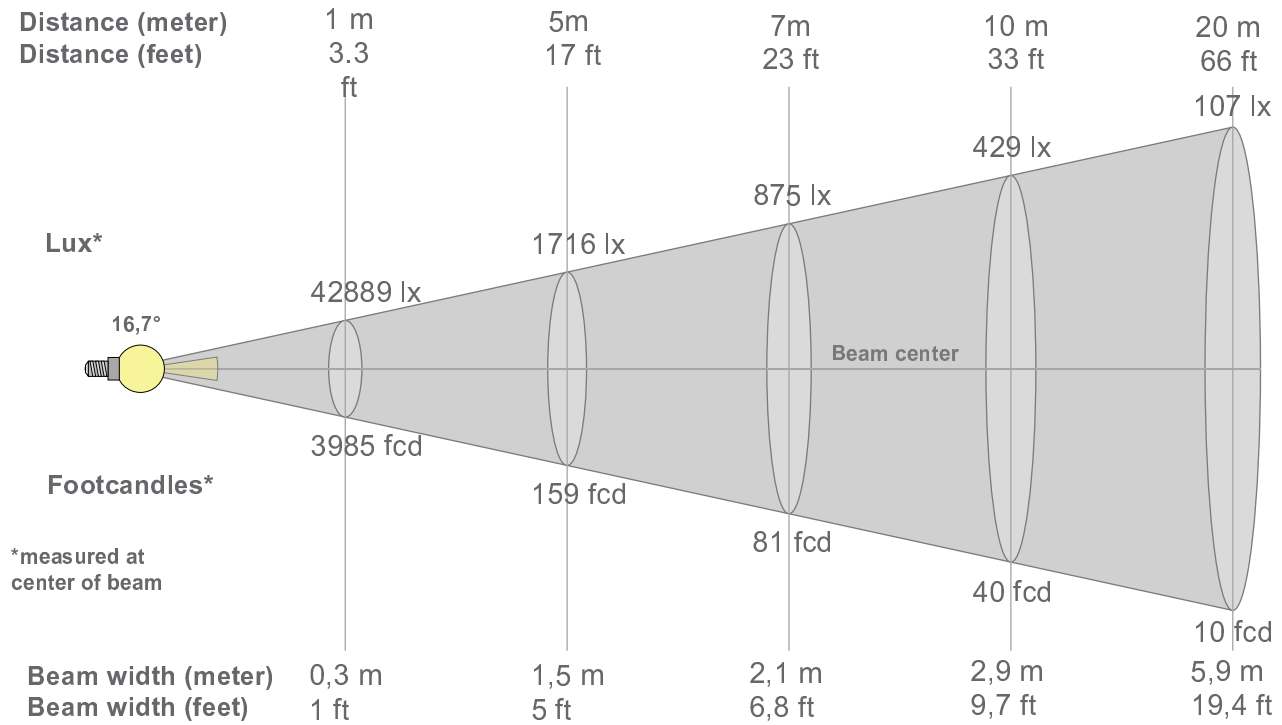
Q1	Q2	Q3	Q4	Q5	Q6	Q7	Q8	Q9	Q10	Q11	Q12	Q13	Q14	Q15
88,6	98,1	84,3	79,2	83,5	86,4	91,6	93,8	98,1	93,8	90,9	90,8	91,2	88,1	89,0

CQS: 88,7



Color parameters

Color temperature	Color rendering index	Red component	Color fidelity	Color gamut	Color quality scale	Color coordinate cie 1931	Color coordinate cie 1931	Color coordinate	Color coordinate	Color deviation from black body
CCT	CRI	CRI R9	TM30 Rf	TM30 Rg	CQS	x	y	u	v	Δuv
5537 K	91,6	62,9	85,8	95,5	88,7	0,332	0,340	0,206	0,321	-0,0011



Beam intensities from 1-20m

1m	2m	3m	4m	5m	6m	7m	8m	9m	10m	11m	12m	13m	14m	15m	16m	17m	18m	19m	20m
3,3ft	6,6ft	9,8ft	13,1ft	16,4ft	19,7ft	23ft	26,2ft	29,5ft	32,8ft	36,1ft	39,4ft	42,7ft	45,9ft	49,2ft	52,5ft	55,8ft	59,1ft	62,3ft	65,6ft
42889lx	10722lx	4765lx	2681lx	1716lx	1191lx	875lx	670lx	529lx	429lx	354lx	298lx	254lx	219lx	191lx	168lx	148lx	132lx	119lx	107lx
3984,5f	996,1fc	442,7fc	249fcd	159,4fc	110,7fc	81,3fcd	62,3fcd	49,2fcd	39,8fcd	32,9fcd	27,7fcd	23,6fcd	20,3fcd	17,7fcd	15,6fcd	13,8fcd	12,3fcd	11fcd	10fcd

Intensities in 0° c-plane

0°	1°	2°	3°	4°	5°	6°	7°	8°	9°	10°	11°	12°	13°	14°	15°	16°	17°	18°	19°
42,9K	43,2K	43,1K	42,1K	40,1K	36,9K	32,9K	27,9K	23,1K	18,5K	14,2K	10,6K	7,7K	5,7K	4,4K	3,4K	2,8K	2,3K	1,9K	1,7K
100%	101%	101%	98%	94%	86%	77%	65%	54%	43%	33%	25%	18%	13%	10%	8%	6%	5%	4%	4%

Intensities in 90° c-plane

0°	1°	2°	3°	4°	5°	6°	7°	8°	9°	10°	11°	12°	13°	14°	15°	16°	17°	18°	19°
42,9K	43,2K	42,8K	42,2K	40,2K	37,2K	33,1K	28,0K	23,1K	18,6K	14,3K	10,6K	7,6K	5,6K	4,2K	3,3K	2,6K	2,2K	1,8K	1,6K
100%	101%	100%	98%	94%	87%	77%	65%	54%	43%	33%	25%	18%	13%	10%	8%	6%	5%	4%	4%

Intensities in 180° c-plane

0°	1°	2°	3°	4°	5°	6°	7°	8°	9°	10°	11°	12°	13°	14°	15°	16°	17°	18°	19°
42,9K	43,3K	43,0K	41,9K	39,9K	36,7K	32,5K	27,6K	23,0K	18,6K	14,6K	11,1K	8,4K	6,3K	4,9K	3,8K	3,1K	2,6K	2,2K	1,9K
100%	101%	100%	98%	93%	85%	76%	64%	54%	43%	34%	26%	20%	15%	11%	9%	7%	6%	5%	4%

Intensities in 270° c-plane

0°	1°	2°	3°	4°	5°	6°	7°	8°	9°	10°	11°	12°	13°	14°	15°	16°	17°	18°	19°
42,9K	42,7K	42,7K	41,7K	39,6K	36,4K	32,3K	27,6K	23,1K	18,7K	14,6K	11,2K	8,5K	6,4K	5,0K	3,9K	3,2K	2,6K	2,2K	1,9K
100%	100%	100%	97%	92%	85%	75%	64%	54%	44%	34%	26%	20%	15%	12%	9%	7%	6%	5%	4%

Beam angle 50%	Field angle 10%	Cutoff angle 2,5%	Intensity ratio in 120° cone	Intensity ratio in 90° cone
16,7°	28,6°	44,2°	98,4%	96,7%