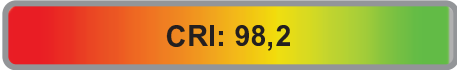


Light efficiency:



Light quality:



Color temperature:



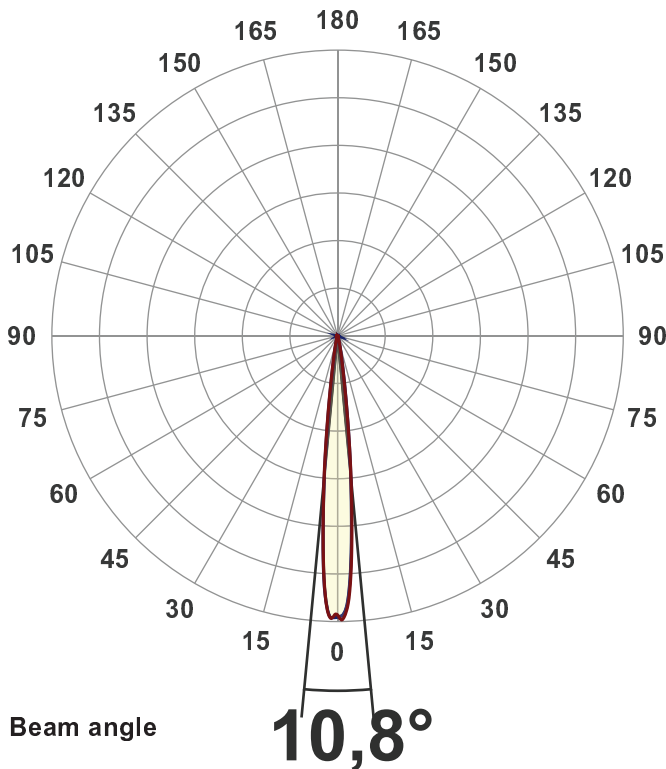
Output: 3746 lm
Peak: 79337 cd
Power: 41,4 W
PF: 1,0



Product name:
BB&S-CBL1-VNSP-4000K
 Item number:
BB&S-CBL1-VNSP-4000K
 Date and time:
01-08-2018 12:40:28
 Description:
VNSP - 4000 Spotlight

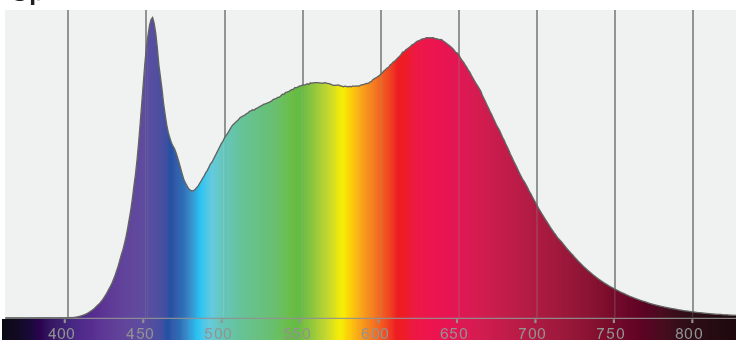
Measured at Ingemann Components by Jakob D. Jepsen

Measured in 8 planes to take into account for any stray lighting.

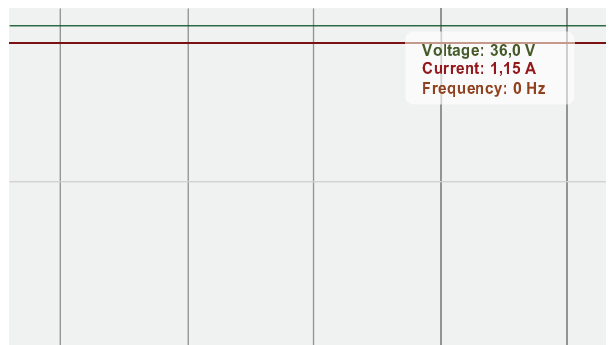


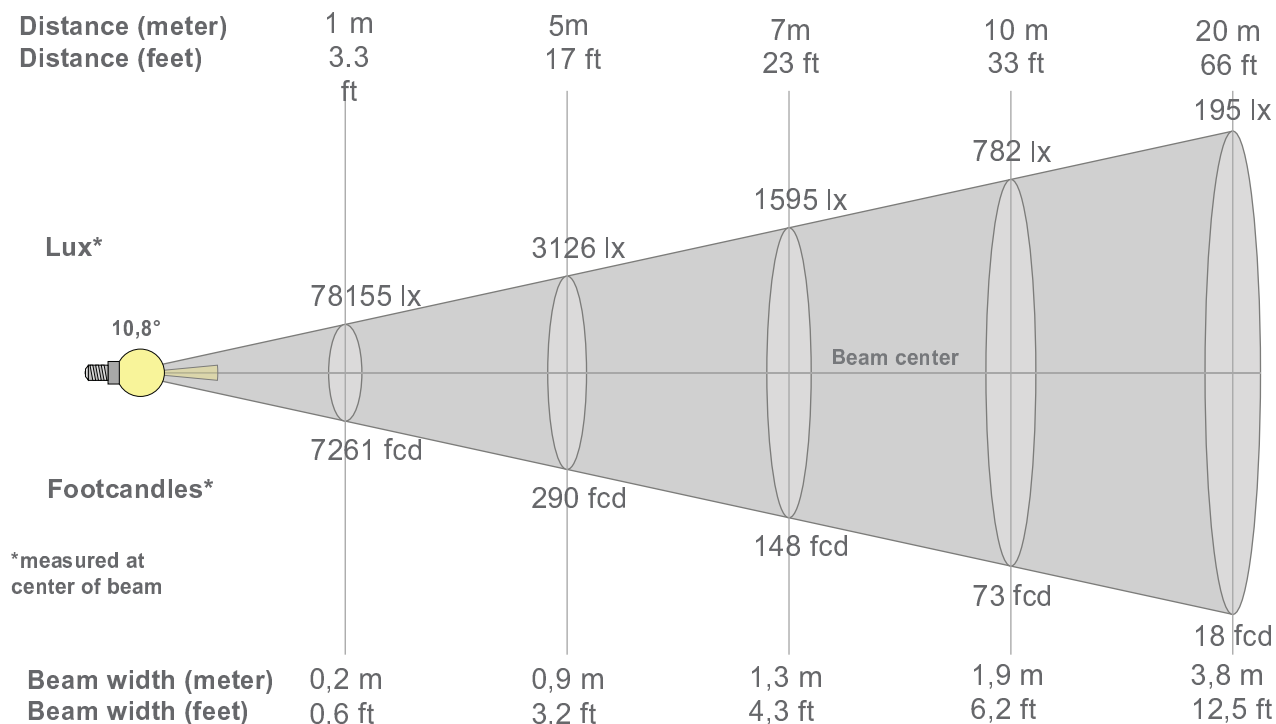
CIE 1931
 x: 0,377
 y: 0,375

Spectra



Power





Beam intensities from 1-20m

1m	2m	3m	4m	5m	6m	7m	8m	9m	10m	11m	12m	13m	14m	15m	16m	17m	18m	19m	20m
3,3ft	6,6ft	9,8ft	13,1ft	16,4ft	19,7ft	23ft	26,2ft	29,5ft	32,8ft	36,1ft	39,4ft	42,7ft	45,9ft	49,2ft	52,5ft	55,8ft	59,1ft	62,3ft	65,6ft
78155lx	19539lx	8684lx	4885lx	3126lx	2171lx	1595lx	1221lx	965lx	782lx	646lx	543lx	462lx	399lx	347lx	305lx	270lx	241lx	216lx	195lx
7260,8f	1815,2f	806,8fc	453,8fc	290,4fc	201,7fc	148,2fc	113,5fc	89,6fcd	72,6fcd	60fcd	50,4fcd	43fcd	37fcd	32,3fcd	28,4fcd	25,1fcd	22,4fcd	20,1fcd	18,2fcd

Intensities in 0° c-plane

0°	1°	2°	3°	4°	5°	6°	7°	8°	9°	10°	11°	12°	13°	14°	15°	16°	17°	18°	19°
78,2K	79,1K	76,1K	68,7K	57,0K	44,6K	32,8K	22,1K	14,5K	9,7K	6,7K	4,9K	3,7K	2,8K	2,2K	1,7K	1,3K	1,1K	0,9K	0,7K
100%	101%	97%	88%	73%	57%	42%	28%	19%	12%	9%	6%	5%	4%	3%	2%	2%	1%	1%	1%

Intensities in 90° c-plane

0°	1°	2°	3°	4°	5°	6°	7°	8°	9°	10°	11°	12°	13°	14°	15°	16°	17°	18°	19°
78,2K	78,0K	75,1K	67,3K	55,6K	43,6K	32,5K	22,6K	15,2K	10,4K	7,3K	5,4K	4,1K	3,1K	2,4K	1,9K	1,5K	1,2K	1,0K	0,8K
100%	100%	96%	86%	71%	56%	42%	29%	19%	13%	9%	7%	5%	4%	3%	2%	2%	2%	1%	1%

Intensities in 180° c-plane

0°	1°	2°	3°	4°	5°	6°	7°	8°	9°	10°	11°	12°	13°	14°	15°	16°	17°	18°	19°
78,2K	78,6K	77,1K	69,7K	57,8K	44,9K	32,4K	21,5K	13,7K	9,0K	6,1K	4,4K	3,3K	2,5K	1,9K	1,5K	1,2K	0,9K	0,7K	0,6K
100%	101%	99%	89%	74%	57%	42%	27%	18%	11%	8%	6%	4%	3%	2%	2%	2%	1%	1%	1%

Intensities in 270° c-plane

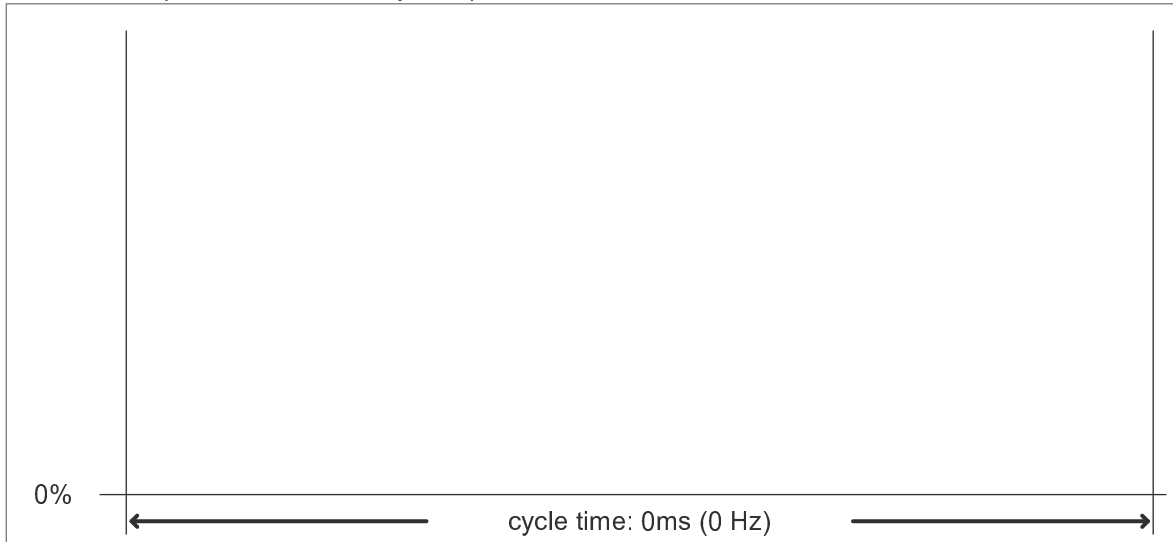
0°	1°	2°	3°	4°	5°	6°	7°	8°	9°	10°	11°	12°	13°	14°	15°	16°	17°	18°	19°
78,2K	78,7K	76,9K	70,0K	57,9K	44,4K	31,3K	20,3K	12,6K	8,0K	5,3K	3,8K	2,8K	2,1K	1,6K	1,2K	1,0K	0,8K	0,6K	0,6K
100%	101%	98%	90%	74%	57%	40%	26%	16%	10%	7%	5%	4%	3%	2%	2%	1%	1%	1%	1%

Beam angle 50%	Field angle 10%	Cutoff angle 2,5%	Intensity ratio in 120° cone	Intensity ratio in 90° cone
10,8°	18,9°	28,4°	98,5%	97,0%

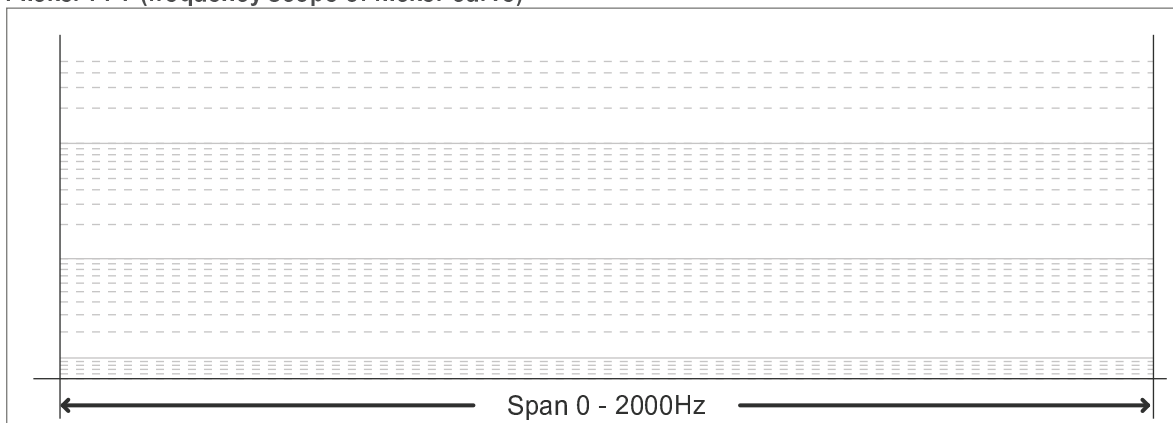
Flicker curve (complete sampled flicker signal)



Flicker frame (frame of one flicker period)



Flicker FFT (frequency scope of flicker curve)



Flicker results:

Flicker frequency:	n/a Hz
Flicker index:	n/a
Flicker percentage:	n/a %
SVM: (Visual flicker)	n/a

Flicker conditions:

Sample rate:	60.000 samples/second
---------------------	------------------------------