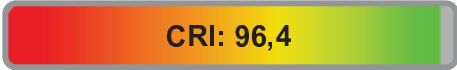


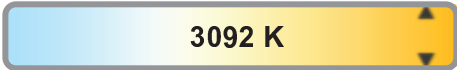
Light efficiency:



Light quality:



Color temperature:



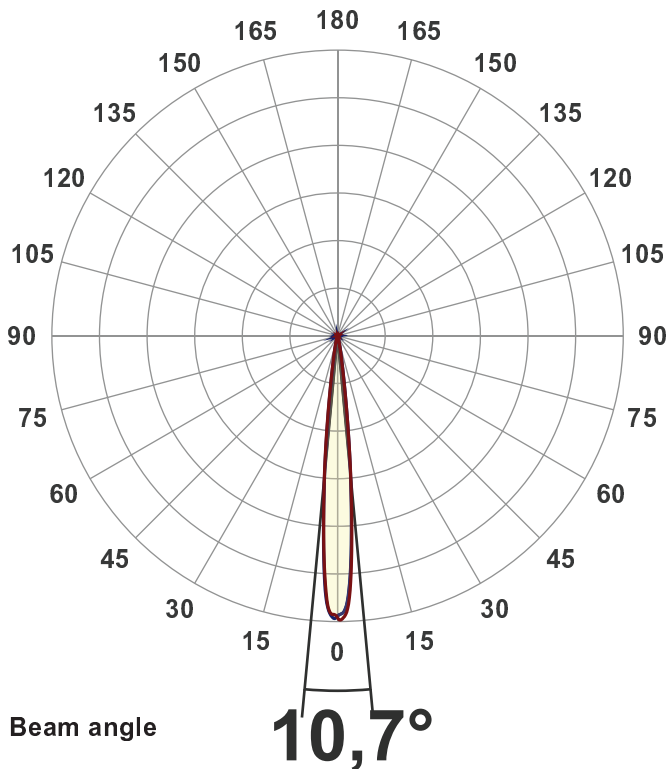
Output: 3205 lm
Peak: 69390 cd
Power: 41,0 W
PF: 1,0



Product name:
BB&S-CBL1-VNSP-3000K
Item number:
BB&S-CBL1-VNSP-3000K
Date and time:
01-08-2018 12:21:07
Description:
VNSP - 3000 Spotlight

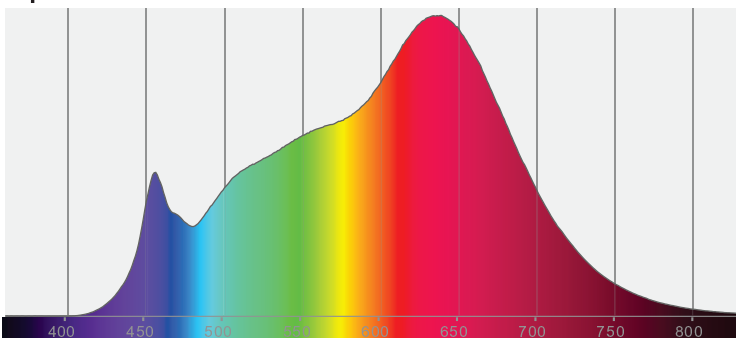
Measured at Ingemann Components by
Jakob D. Jepsen

Measured in 8 planes to take into
account for any stray lighting.

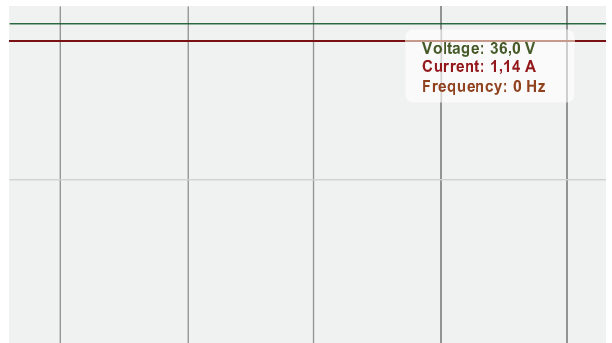


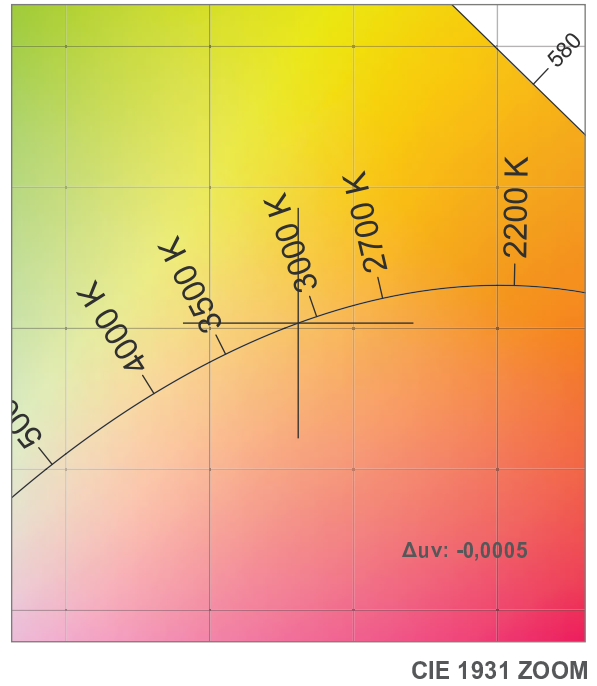
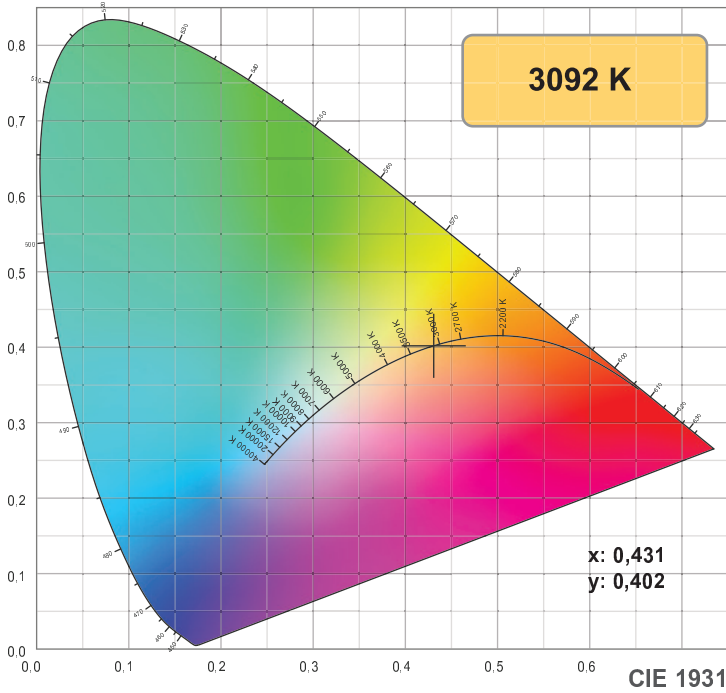
CIE 1931
x: 0,431
y: 0,402

Spectra

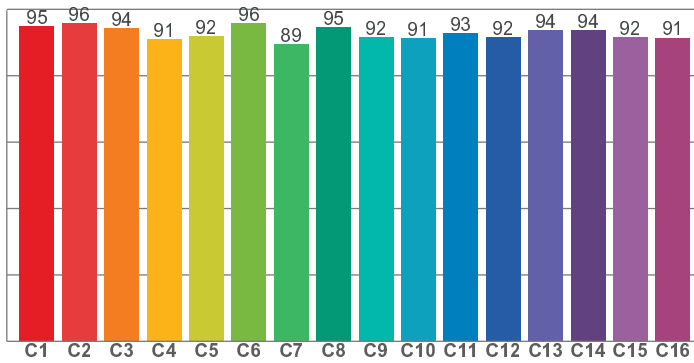


Power

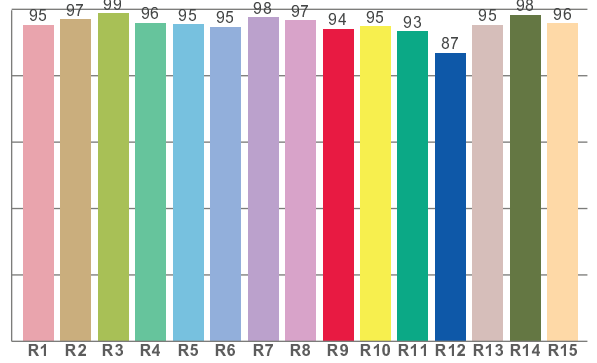




TM30: 93,0



CRI: 96,4 (R1-R8)



CRI R values, only R1-R8 are used to calculate final CRI value

R1	R2	R3	R4	R5	R6	R7	R8	R9	R10	R11	R12	R13	R14	R15
95,3	97,1	98,8	95,8	95,5	94,7	97,6	96,7	94,0	94,9	93,3	86,8	95,3	98,3	95,8

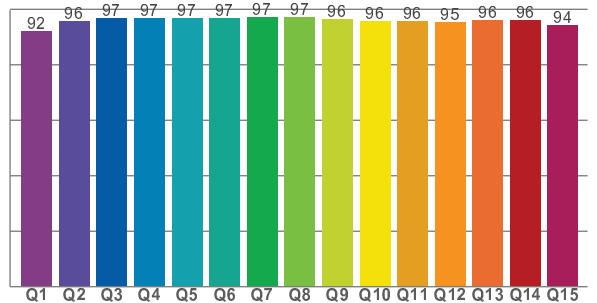
TM30 C values, 16 binned values out of total of 99 C values

C1	C2	C3	C4	C5	C6	C7	C8	C9	C10	C11	C12	C13	C14	C15	C16
95,0	95,7	94,3	90,9	92,0	95,8	89,4	94,7	91,7	91,3	92,7	91,6	93,7	93,7	91,7	91,4

CQS Q values

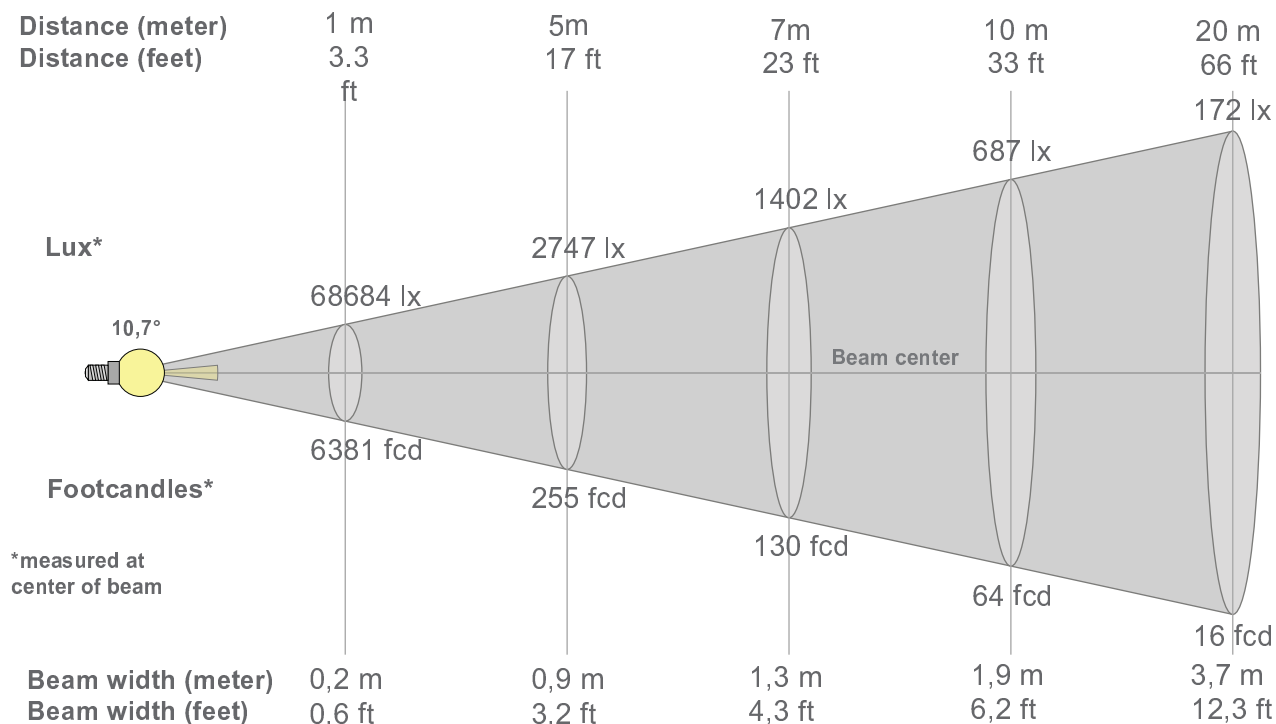
Q1	Q2	Q3	Q4	Q5	Q6	Q7	Q8	Q9	Q10	Q11	Q12	Q13	Q14	Q15
92,0	95,9	96,8	96,9	96,9	96,8	97,3	97,0	96,4	95,9	95,7	95,3	96,1	96,1	94,3

CQS: 95,6



Color parameters

Color temperature	Color rendering index	Red component	Color fidelity	Color gamut	Color quality scale	Color coordinate cie 1931	Color coordinate cie 1931	Color coordinate	Color coordinate	Color deviation from black body
CCT	CRI	CRI R9	TM30 Rf	TM30 Rg	CQS	x	y	u	v	Δuv
3092 K	96,4	94,0	93,0	100,0	95,6	0,431	0,402	0,247	0,346	-0,0005



Beam intensities from 1-20m

1m	2m	3m	4m	5m	6m	7m	8m	9m	10m	11m	12m	13m	14m	15m	16m	17m	18m	19m	20m
3,3ft	6,6ft	9,8ft	13,1ft	16,4ft	19,7ft	23ft	26,2ft	29,5ft	32,8ft	36,1ft	39,4ft	42,7ft	45,9ft	49,2ft	52,5ft	55,8ft	59,1ft	62,3ft	65,6ft
68684lx	17171lx	7632lx	4293lx	2747lx	1908lx	1402lx	1073lx	848lx	687lx	568lx	477lx	406lx	350lx	305lx	268lx	238lx	212lx	190lx	172lx
6381fcd	1595,2f	709fcd	398,8fc	255,2fc	177,2fc	130,2fc	99,7fcd	78,8fcd	63,8fcd	52,7fcd	44,3fcd	37,8fcd	32,6fcd	28,4fcd	24,9fcd	22,1fcd	19,7fcd	17,7fcd	16fcd

Intensities in 0° c-plane

0°	1°	2°	3°	4°	5°	6°	7°	8°	9°	10°	11°	12°	13°	14°	15°	16°	17°	18°	19°
68,7K	69,0K	66,9K	60,5K	49,7K	38,3K	27,4K	18,0K	11,4K	7,3K	4,9K	3,5K	2,6K	2,0K	1,5K	1,2K	0,9K	0,7K	0,6K	0,5K
100%	100%	97%	88%	72%	56%	40%	26%	17%	11%	7%	5%	4%	3%	2%	2%	1%	1%	1%	1%

Intensities in 90° c-plane

0°	1°	2°	3°	4°	5°	6°	7°	8°	9°	10°	11°	12°	13°	14°	15°	16°	17°	18°	19°
68,7K	67,6K	65,2K	58,6K	48,3K	37,6K	27,3K	18,3K	11,9K	8,0K	5,7K	4,1K	3,1K	2,4K	1,9K	1,4K	1,1K	0,9K	0,7K	0,6K
100%	98%	95%	85%	70%	55%	40%	27%	17%	12%	8%	6%	5%	3%	3%	2%	2%	1%	1%	1%

Intensities in 180° c-plane

0°	1°	2°	3°	4°	5°	6°	7°	8°	9°	10°	11°	12°	13°	14°	15°	16°	17°	18°	19°
68,7K	68,0K	66,1K	58,9K	48,6K	38,0K	28,0K	19,1K	12,5K	8,3K	5,8K	4,3K	3,2K	2,5K	1,9K	1,5K	1,1K	0,9K	0,7K	0,6K
100%	99%	96%	86%	71%	55%	41%	28%	18%	12%	8%	6%	5%	4%	3%	2%	2%	1%	1%	1%

Intensities in 270° c-plane

0°	1°	2°	3°	4°	5°	6°	7°	8°	9°	10°	11°	12°	13°	14°	15°	16°	17°	18°	19°
68,7K	68,7K	66,5K	60,1K	49,1K	37,7K	27,1K	18,0K	11,6K	7,6K	5,2K	3,8K	2,8K	2,1K	1,6K	1,2K	1,0K	0,8K	0,6K	0,5K
100%	100%	97%	87%	72%	55%	39%	26%	17%	11%	8%	5%	4%	3%	2%	2%	1%	1%	1%	1%

Beam angle 50%	Field angle 10%	Cutoff angle 2,5%	Intensity ratio in 120° cone	Intensity ratio in 90° cone
10,7°	18,7°	28,2°	98,6%	97,1%